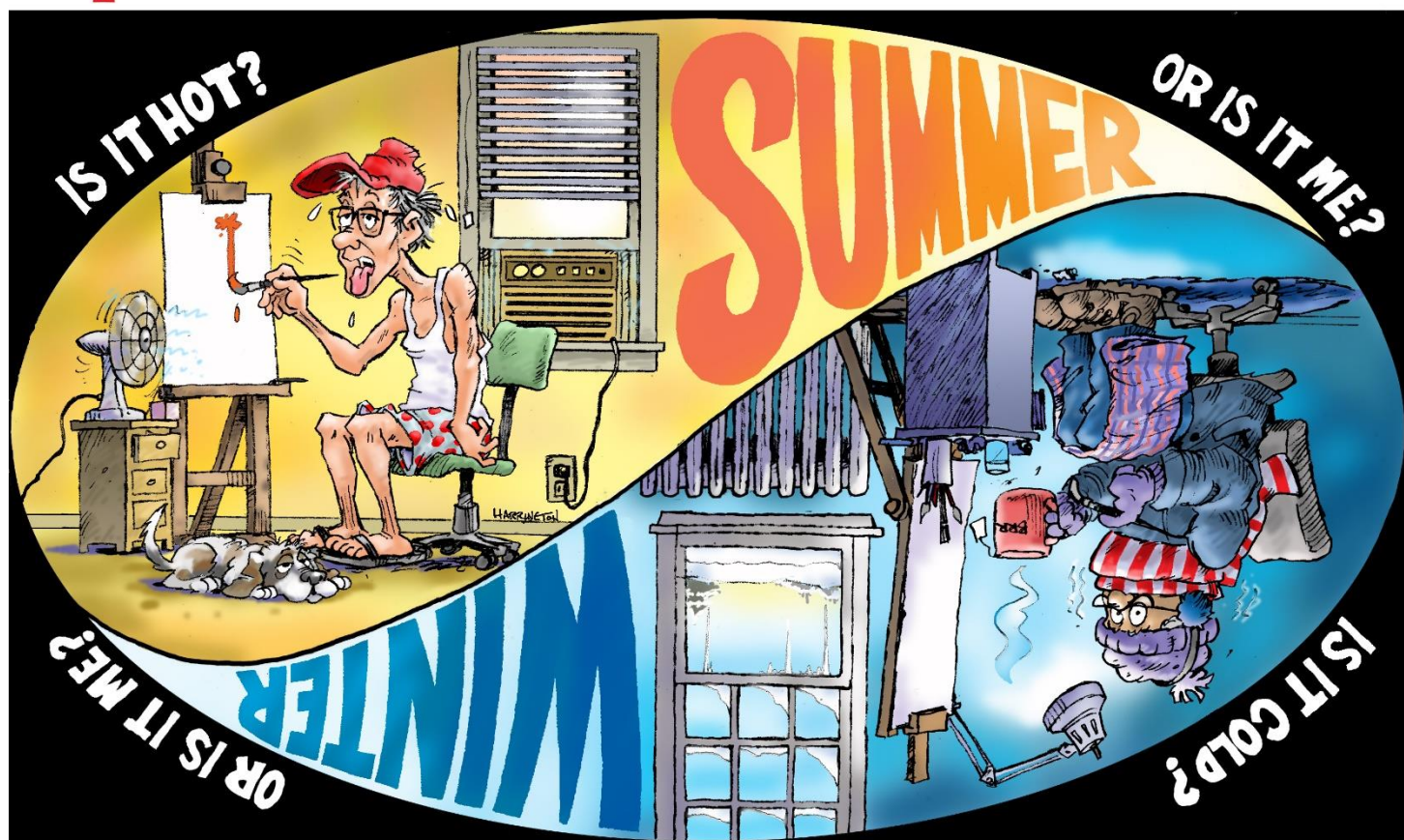


Gallery hours: By appointment: Wednesday, Friday, Saturday, Sunday: 1 PM to 5 PM

September 2021

## September 2021

**Reusable artwork -Flip this image over  
180 degrees every six months!**



Rich Harrington

## The Philadelphia Sketch Club's 161<sup>st</sup> Anniversary Gala Special Edition

### This Month's Portfolio

Sketch Club Special Events	2
Sketch Club Critique Group	12
Main Gallery Schedule	13
Stewart Gallery Schedule	17
Sketch Club Activities	18
Sketch Club Open Workshop Schedule	20
Opportunities/Notices	21
Membership	23
Volunteer	24
Support the Sketch Club	25
Member Classifieds	25
Send your member news, announcements and corrections to: <a href="mailto:portfolio@sketchclub.org">portfolio@sketchclub.org</a> . The deadline for ALL submissions is 1-week before the end of the month.	

Reminder: It's never too late. You can always renew your membership

You may pay online at <http://sketchclub.org/annual-dues-payment/> or mail your check to:

The Philadelphia Sketch Club

235 S. Camac St.

Philadelphia, PA 19107

For questions please contact the Gallery Manager at 215-545-9298 or email:

[gallerymanager@sketchclub.org](mailto:gallerymanager@sketchclub.org)

Late Breaking News – See items that were submitted after the publication date. Go to:

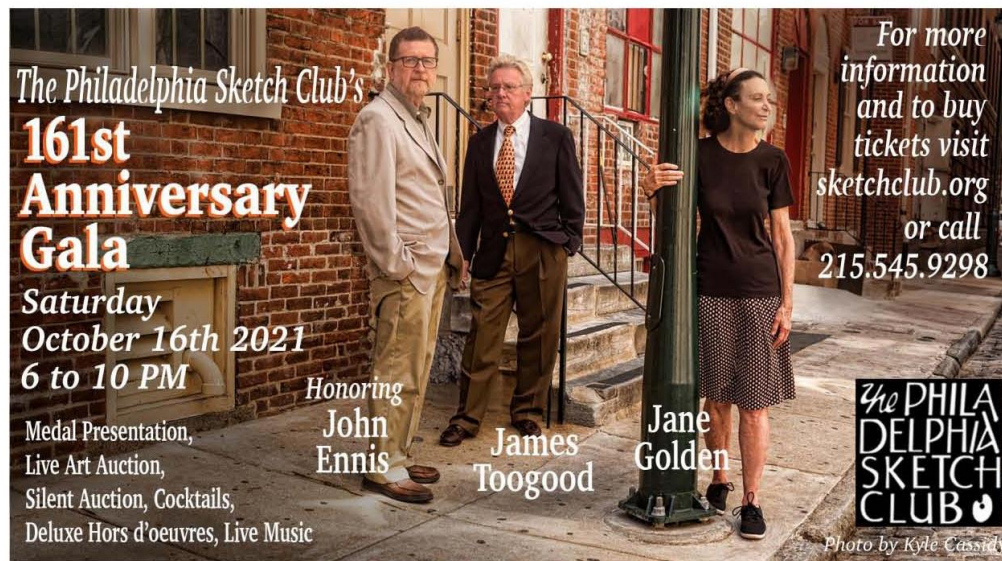
<http://sketchclub.org/late-breaking-news/>

The PSC general email is: [info@sketchclub.org](mailto:info@sketchclub.org)



## Sketch Club Special Events

# THE PHILADELPHIA SKETCH CLUB'S 161<sup>ST</sup> ANNIVERSARY GALA



### Philadelphia Sketch Club's 161st Anniversary Gala, Honoring John Ennis, Jane Golden and James Toogood October 16, 2021

Dear Sketch Club Members & Friends:

The Philadelphia Sketch Club will be hosting its 161st Anniversary Gala on Saturday, October 16, 2021, from 6 PM to 10 PM. One of the highlights of the event is that we will be honoring three of the nation's top artists, John Ennis, Jane Golden and James Toogood. We will be presenting each with the Philadelphia Sketch Club Medal for their significant achievements in the visual arts. This will be a fun and highly visible event. It will bring together our members, patrons, supporters, friends, sponsors and neighbors. It will feature a live art auction, silent auction, deluxe hors d'oeuvres, cocktails and music. It is critical that this event be a success as it is a significant fundraising vehicle for the Club.

As a member or friend of the Sketch Club, you can make our event a success by putting some thought into how you can help with this effort. You can participate by:

- Purchasing tickets for you and a guest(s). See attached order form for tickets.
- Be a purchaser in our live and/or silent auctions.
- Encouraging your friends to purchase tickets and attend. Tickets may be purchased on our website ([sketchclub.org](http://sketchclub.org)), by calling 215-545-9298 or you can give us their names and addresses and we will make sure they are sent a ticket order form.
- Contact a friend or business that may donate an item to our silent auction. Donors of silent auction items will be recognized in our program booklet.
- Contact an individual or business that would place an ad in our program booklet.
- Contribute an additional donation to the Gala fund. Any support of \$1,000 or more will get sponsor recognition in the program booklet.

## Sketch Club Special Events

Following this email you will find a Gala ticket order form, images of artwork in our live auction, advertisement form for booklet and silent auction donation form for your use in pursuing donations. Our staff would be happy to help you with these efforts if you think it is needed so please do not hesitate to contact us with your ideas at [bpatterson2045@comcast.net](mailto:bpatterson2045@comcast.net) or 267-664-2434.

We have the backing of many important members of the artistic community. Members of our Honorary Gala Committee include William R. Valerio, Director & CEO, Woodmere Art Museum; Kathleen A. Foster, The Robert L. McNeil, Jr., Senior Curator of American Art and Director, Center for American Art, Philadelphia Museum of Art; Cecelia Fitzgibbon, President, Moore College of Art and Design; Moe Brooker, Artist & 2014 Honoree; Bill Scott, Artist & 2013 Honoree; Richard A. Harrington, President of the Philadelphia Sketch Club and Professor, Illustration, Moore College of Art and Design; Garth Herrick, Artist & 2015 Honoree; Gail Ferretti, an artist and art collector, and Howard Schaevitz, an engineer and an authority and collector of early Packard motor cars; Bill and Pat Patterson, collectors of art and Gaudy Dutch; John Thornton, Artist and Videographer; and David Weiss, Senior Vice President at Freeman's, a specialist on the *Antiques Roadshow* and guest auctioneer for the Gala live auction.

The event will be a fun affair where you can socialize with Sketch Club members, members of the Honorary Gala Committee, and the three honorees; enjoy the food and beverages and perhaps win one of the ten artworks that will be part of our live auction (see attached).

Your help to market this year's Gala is greatly appreciated. If you have any questions or need more information, please contact me.

Best regards,

Rich Harrington  
President & Co-Chair, 161st Anniversary Gala  
[info@sketchclub.org](mailto:info@sketchclub.org)  
215-545-9298

Bill Patterson  
Co-Chair, 161st Anniversary Gala  
[bpatterson2045@comcast.net](mailto:bpatterson2045@comcast.net)  
267-664-2434

**You can download the complete package:**

<https://sketchclub.org/wp-content/uploads/2021/08/Gala-2021-Members-Email-Gala-Promotion-Items.pdf>



## Sketch Club Special Events

### THE PHILADELPHIA SKETCH CLUB'S 161<sup>ST</sup> ANNIVERSARY GALA TICKET ORDER FORM

You may order tickets for the 161<sup>st</sup> Anniversary Gala by completing the below information and mailing this form to:

Philadelphia Sketch Club  
Attn: GALA  
235 South Camac Street  
Philadelphia, PA 19107

I will be attending the Philadelphia Sketch Club's 161<sup>st</sup> Anniversary Gala.  
(Please indicate the number of tickets and total dollar amount.)

#	Type of Ticket	Ticket \$
_____	Patron: \$150 (\$125 is tax deductible)	_____
_____	Patron names will be printed in the program	_____
_____	Art Lover: \$100 (\$75 is tax deductible)	_____
_____	PAFA Alumni \$75 (\$50 is tax deductible)	_____
_____	Artist (Sketch Club members only) \$60 (\$35 is tax deductible)	_____
_____	Total	_____

\_\_\_\_\_ I will not be able to attend the Gala but would like  
to make a contribution of \$ \_\_\_\_\_.

Please make your check payable to the Philadelphia Sketch Club or provide your credit card information below:

Credit Card Type (please check one)

\_\_\_\_\_ VISA \_\_\_\_\_ Mastercard \_\_\_\_\_ American Express

Account Number \_\_\_\_\_

Exp Date \_\_\_\_\_ Security Code \_\_\_\_\_

Name \_\_\_\_\_

Address \_\_\_\_\_

City, State, Zip \_\_\_\_\_

Phone \_\_\_\_\_ Email \_\_\_\_\_

TICKETS CAN ALSO BE PURCHASED ON LINE AT <https://sketchclub.org/sketch-club-gala-161/>  
OR BY CALLING **215-545-9298** – RETURNED CALLS MAY TAKE A DAY OR TWO

## Sketch Club Special Events

### Gala Auction Item Examples

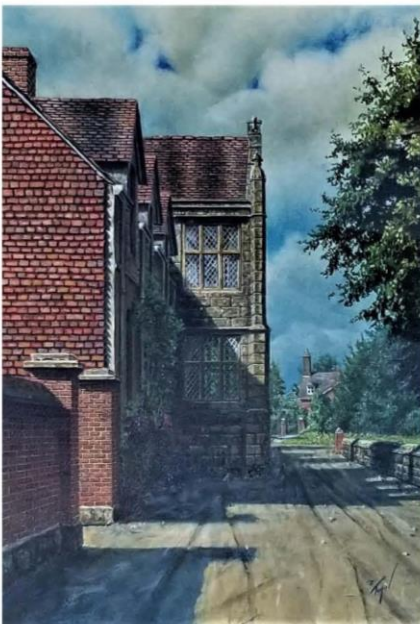
The Philadelphia Sketch Club,  
161st Anniversary Gala, Live Auction  
Items,  
October 16, 2021



Moe Brooker, *What Was Is, What Is Was*,  
2011, Oil on panel, 12" x 12" (Donated in  
Honor of Jane Golden)



John Ennis, *Brookside*, Oil on panel, 9" x  
12"



James Toogood, AWS, NWS, AAA, *King's  
House, Salisbury*, Watercolor, 14.5" x  
10.25"



Henry C. Pitz, (1895-1976), *Arab Warrior*,  
Oil on panel, 18.25" x 10"

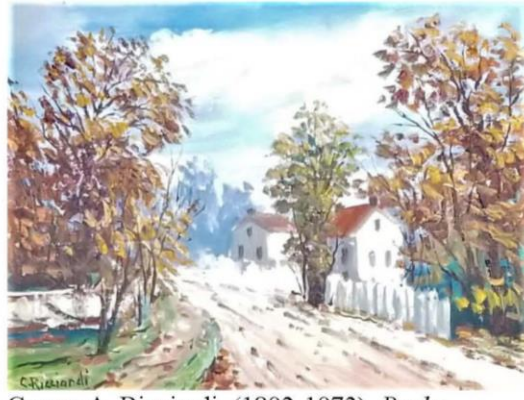


## Sketch Club Special Events

### Gala Auction Item Examples



Domenic DiStefano, AWS (1924-2011),  
*Gloucester Harbor*, Watercolor, 21" x 29"



Cesare A. Ricciardi, (1892-1973), *Bucks County Landscape*, Oil on panel, 11.5" x 15.5"



Anthony Michael Autorino, (1937-2015),  
*Betsy's Garden Study*, 1995, Oil on panel,  
9" x 14"



Carl Weber, (1850-1921), *Sheep and Apple Blossoms*, Watercolor, 17" x 27"



Doree Loschiavo, *Independence Hall*,  
Watercolor, 20" x 26"



T. Norman Mansell, (1904-1991),  
*Philadelphia Sketch Club Basement (The Grub Club)*, Etching,  
Plate 9.75" x 8"

## Sketch Club Special Events

### **Sketch Club On-Line Gallery: Always Room for More Work!**

There's always room for more work: Submit Now!

The Sketch Club is hosting an on-going open gallery at: <http://sketchclub.org/sketch-club-open-gallery/>. This gallery is open to PSC members and non-members.

Submit up to 4 images of your work or of yourself working along with a very brief description to: [portfolio@sketchclub.org](mailto:portfolio@sketchclub.org).

Include for your work: Your name; Title; size; and medium.

For photos of yourself include, who you are and a brief description of the image.

## Sketch Club Special Events

### Opening Events Consistant with CDC guidelines

*Welcome Back!*

Sketchclub.org • (215) 545-9298 • 235 S Camac St, Philadelphia, PA 19107

*Workshops*

#### Fees

\$9 Model Workshop sessions, \$8 for members

\$6 for full time students

Model Tips are optional but appreciated

\*\*\*Bring your drawing and painting materials!\*\*\*



*Life Model*

Tuesday	12:00 pm - 3:00 pm Extended pose	Monitor: Jacqueline Barnett
Saturday	9:30am-12:30pm Extended pose	Monitor: Jacqueline Barnett

*Costumed Model*

Thursday	12:00pm-3:00pm Extended pose	Monitor: Bob Bohne
----------	---------------------------------	--------------------

Tables, chairs, and easels provided. Please bring your own supplies  
Vaccination required for entry

The Sketch Club is offering in-person workshops in compliance with CDC guidelines.

Member feedback:

*Congratulations on the reopening.*

*I thank you folks who kept things together last year.*

*It was great that you took advantage of the down time to do the positive repairs and upkeep that was needed in our club building. I want you to know how much I appreciate what all of you did. - Rich Alliger*



## Sketch Club Special Events

### Workshop Attendee Responsibilities

During this period of returning to normal, we must remember to observe that some may choose be wearing masks and to respect a 6 foot distance.

Fees will be collected after the second pose. \$9 for non-members, \$8 for members, \$6 for full time students.

When setting up, please give space for others behind or in front of you. Make sure those in back can see the model.

Please observe the easel arrangement in the storage closet and replace your easel in the same manner.

Please make every effort to wipe down your easel when leaving and make sure around your easel is clear of charcoal or pastel dust.

Please put back your easel if leaving early. Use the 10-minute rest to clean up.

Please to not use turpentine for oils.

Please do all aerosol spraying outdoors, front or back yard.

If there is a change in the models pose, please inform the monitor instead of the model.

There will be two snacks available each week. The person who brought them will take these home, only coffee and tea will remain in the cabinet.

Please try to come in early to find an optimal spot to work in, and also not to cause as much disturbance during workshop time.

Anyone who needs a locker or has fees for a locker should talk to Chuck Tarr, usually here on Tuesdays, or contact the office at 215-545-9298.

Thank you for your efforts to make workshops as efficient and rewarding as possible!

## Sketch Club Special Events

### On-Line Resources

- The Sketch Club Critique Group: <https://www.facebook.com/groups/PSCCritique>
- The Sketch Club Open Gallery: <https://sketchclub.org/sketch-club-open-gallery/>
- The Sketch Club's web site: [sketchclub.org](http://sketchclub.org)
- Our Facebook page: <https://www.facebook.com/thesketchclub/>
- Instagram: <https://www.instagram.com/philadelphiasketch/>
- Twitter: <https://twitter.com/PhilaSketchClub>
- Members: Stay in touch with other PSC colleagues. For contact information, go to the members only page at: <http://sketchclub.org/members-only-2/>. See Stay in touch with current Sketch Club Members in the members section below for instructions.

**Non-Sketch Club friends can find a listing of current members names and business websites if they have one at:**

**<http://sketchclub.org/sample-page/current-members-contact-list/>.**

### Support the Sketch Club through Amazon Smile

Make free donations to the Sketch Club anytime you shop at Amazon Smile. Remember that anyone who purchases through Amazon can have Amazon make a contribution to the Club for most every purchase you make. Just log in and go to: [smile.amazon.com](http://smile.amazon.com) -From there you can select the Philadelphia Sketch Club as your non-profit charity . Done. Then the Club receives a percentage of most every purchase you make. It is a painless way to contribute to the Club's welfare. Most purchases made on your mobile app and from Whole Foods qualify too! Go to [smile.amazon.com/about/](http://smile.amazon.com/about/) to learn more.



## Sketch Club Special Events

### Ongoing Facilities Renovation

Minor projects are ongoing. We can't wait to share our updated home with our members and friends. Major work on the upstairs gallery and stairways is complete.

#### Additional work recently completed includes:

- Refurbish gallery pedestals
- Refurbish model stage and other accessories
- Exterior Painting
- Replace men's room sink faucet
- Refinishing gallery steps
- Reorganizing the ratskeller (basement)
- Repair of roof leak and repair Gallery cracks in ceiling and upper walls and area was painted
- Replace AC circuit board
- Paint upstairs gallery lockers
- Paint upstairs gallery storage closet interiors
- Repair ceiling tiles in the upstairs storage area
- Annual service of heating and AC units
- Major servicing of water/sewer services
- Lighting upgrade in Rathskeller
- Lighting upgrade in back stairway
- Lighting upgrade in water heater utility closet
- Numerous other refurbishing, repairs, and required services

**We need your help:** This required maintenance of our Sketch Club home is costly. We ask our members and friends to help keep the PSC financially healthy. Friends, please consider contributing to our maintenance fund. Members, please consider financial support beyond membership.

Contribute Now! [Make an On-line Contribution](#)

## Sketch Club Critique Group

### The Sketch Club Critique FaceBook Group

#### Curator's Pick – Don Gauger

The concept of "Virtual Reality" (VR) artist tools is covered nicely in a BBC online article "*Google's Tilt Brush VR painting app goes open source*".

Be sure to watch the video "3D painting makes audiences part of the art" further down the page to witness 3-dimensional painting demonstrations.

Link: <https://www.bbc.com/news/technology-55826249>



#### Join the Critique Facebook Group

Join your Club colleagues online at the "Philadelphia Sketch Club Critique"-- a Private group for Active PSC members only on Facebook.

Colleagues, please join in and contribute to your online art community. We all miss the camaraderie we enjoy at the Club house. The "Philadelphia Sketch Club Critique" is a chance to get together online until we can gather once more around the punch bowl and raise a toast, "to the Sketch Club, past, present and future."

#### Here's how it works:

- Active members go to the new "Philadelphia Sketch Club Critique" page and request access, which is available to all Club members in good standing.
- Once in post your work and watch as other members' post their artwork for critique.
- More details will be posted within the group including the option to be considered for a monthly "Highlights", a curated online gallery to be published on our external site/Instagram/Twitter channels.

This FaceBook Group is private; this means that as Members submit their work others are invited to critique each other in a professional and respectful way.

#### Critique Group Links:

- You can find a link on the Sketch Club website: <https://sketchclub.org/>
- The Critique Group's Facebook Page: <https://www.facebook.com/groups/PSCCritique>
- The PSC's main FaceBook page: <https://www.facebook.com/thesketchclub>



Gallery hours: By appointment: Wednesday, Friday, Saturday, Sunday: 1 PM to 5 PM

September 2021

## Sketch Club Critique Group

**If you are hearing a buzz about "NFT"s and want to know a little more, here are two articles. - Don Gauger**

**Definitions:** Cryptoart, or NFT art (NFTs are so-called nonfungible tokens)

NFTs and AI Are Unsettling the Very Concept of History -- Wired Magazine

<https://www.wired.com/story/nfts-and-ai-are-unsettling-the-very-concept-of-history/>

**NFTs Are Hot. So Is Their Effect on the Earth's Climate -- Wired Magazine**

<https://www.wired.com/story/nfts-hot-effect-earth-climate/>



If you are following the news around the new NFT marketplace for artwork you may find this crypto-currency article interesting. You need an online WSJ account, or could read it at your public library. -- Don Gauger

<https://www.wsj.com/articles/ethereum-is-booming-in-the-nft-frenzyso-is-network-congestion-11620050853?>

Copyright ©2020 Dow Jones & Company, Inc. All Rights Reserved. 87990cbe856818d5eddac44c7b1cdeb8

The article appeared in the May 4, 2021, print edition of the Wall Street Journal as 'NFT Frenzy Fuels Bitcoin Rival's Boom.' Written by Paul Vigna paul.vigna@wsj.com

## Main Gallery Schedule

[See the Sketch Club Open Gallery](#)

[See the 2021 Exhibition Schedule](#)

[Important Dates for all PSC Activities](#)

Gallery hours: By appointment: Wednesday, Friday, Saturday, Sunday: 1 PM to 5 PM

September 2021

## Main Gallery Schedule

### PSC PHOTOgraphy 2021 Exhibition

A virtual exhibition Continued through September, 2020



[See the Exhibition](#)

### Awards

Paul Guertin	Magical Morning	1st Prize
Nate Schwartz	Social Consciousness barrier	2nd Prize
Bruce Killen	Waiting	3rd Prize
Joyce Andersen	Split World	Honorable Mention
Dan Cook	Wall with Hope	Honorable Mention
Joseph Podlesnik	Untitled	Honorable Mention
Daniel Saunders	Diving Head First Into This	Honorable Mention
Joan Wheeler	Eva	Honorable Mention



Gallery hours: By appointment: Wednesday, Friday, Saturday, Sunday: 1 PM to 5 PM

September 2021

## Main Gallery Schedule

### PSC PHOTOgraphy 2021 Exhibition: Awards



1st Prize - Paul Guertin; "Magical Morning"



2nd Prize - Nate Schwartz; "Social Consciousness Barrier"



3rd Prize - Bruce Killen; "Waiting"

Gallery hours: By appointment: Wednesday, Friday, Saturday, Sunday: 1 PM to 5 PM

September 2021

## Main Gallery Schedule

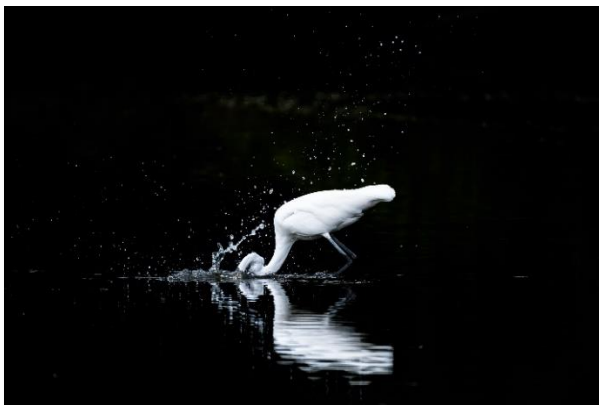
### PSC PHOTOgraphy 2021 Exhibition: Honorable Mention



Joyce Andersen' Split World"



Dan Cook; "Wall with Hope"



Daniel Saunders; "Diving Head First Into This"



Joan Wheeler; "Eva"



Joseph Podlesnik; "Untitled"



Gallery hours: By appointment: Wednesday, Friday, Saturday, Sunday: 1 PM to 5 PM

September 2021

## Stewart Gallery Schedule



**Exhibition space in  
the Stewart Gallery  
is available for PSC  
Members!**

Reserve the gallery by  
contacting our  
Exhibition Coordinator:  
[exhibitions@sketchclub.org](mailto:exhibitions@sketchclub.org)

The space is \$150 for a  
month. Members can  
show once in the Stewart  
Gallery per year.

[See the Sketch Club Open Gallery](#)

[See the 2021 Exhibition Schedule](#)

[Important Dates for all PSC Activities](#)



## Sketch Club Activities

### Critique Night: TBD

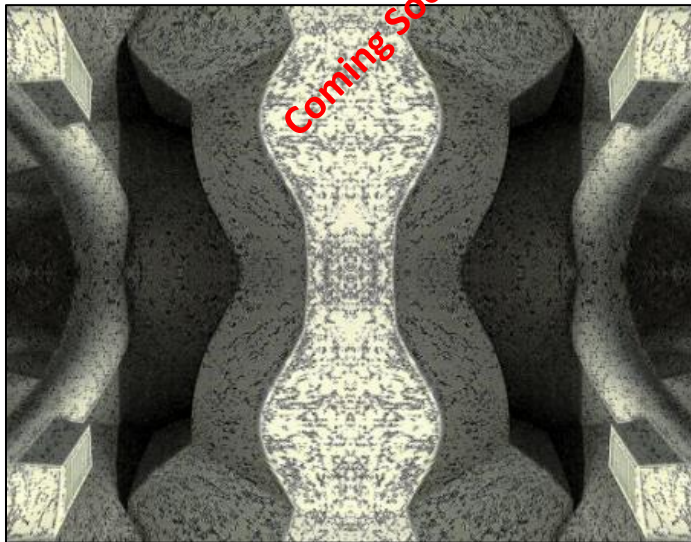
Open to PSC Members and Non-Members

Critique Night is held in the Library of the Sketch Club every third Wednesday beginning at 7 PM. Bring work you have finished, work in progress, or just sketches for work you're planning! Photos, digital work, drawings, all mediums are welcome; we can project digital images on a screen for review, so you have the option to show work that may be too big or too heavy to transport to the Club. There is no one individual directing the critique, just your fellow artists and peers. Facilitated/monitored by Rich Harrington, PSC President



Thanks to PSC member volunteer **Rich Harrington** for organizing and monitoring this event

### Photo Circle: TBD



We will discuss new group activities and possibilities for expansion. The Photo Circle meets every 2<sup>nd</sup> Thursday at 6:30 PM. You can contact Steve anytime at [stphniwan@gmail.com](mailto:stphniwan@gmail.com) or 215-300-9192 (cell). **Steve Iwanczuk**, Photo Circle Monitor and Member of Philadelphia Sketch Club Board of Directors.

Thanks to PSC member volunteer **Steve Iwanczuk** for organizing and monitoring this event.

## Art Natters: Members News

### Visit Sketch Club Online Gallery

Go to the Sketch Club's on-going open gallery to see recent updates with work by PSC members and friends:

<http://sketchclub.org/sketch-club-open-gallery/>.

Members and friends can submit up to 4 images. Send your submissions to:

[portfolio@sketchclub.org](mailto:portfolio@sketchclub.org).

Include for your work: Your name; Title; size; and medium.

For photos of yourself, include: Who you are and a brief description of the image.

Sketch Club member **Su Horthy** is pleased to announce that my painting, Color Pops, Beautiful Transients 5, has been chosen to be in the Artists Equity's Juried Summer Show, Emerging. The juror is Robert Goodman, Moore College of Art, Professor of Fine Art. The virtual show will be held in a brand-new, state of the art virtual gallery. For details, [www.ArtistsEquity.org](http://www.ArtistsEquity.org).



Beautiful Transients 5

## Sketch Club Open Workshop Schedule

All workshops are open to the public. There is no need to register before attending. You do NOT have to be a member of the Philadelphia Sketch Club to participate in the workshops. Our workshops are open to anyone who is interested in drawing, painting, or printmaking. All skill levels are welcome.

### Welcome Back!

Sketchclub.org • (215) 545-9298 • 235 S Camac St, Philadelphia, PA 19107

## Workshops

### Fees

\$9 Model Workshop sessions, \$8 for members  
\$6 for full time students

Model Tips are optional but appreciated

\*\*\*Bring your drawing and painting materials!\*\*\*



### Life Model

Tuesday	12:00 pm - 3:00 pm Extended pose	Monitor: Jacqueline Barnett
Saturday	9:30am-12:30pm Extended pose	Monitor: Jacqueline Barnett

### Costumed Model

Thursday	12:00pm-3:00pm Extended pose	Monitor: Bob Bohne
----------	---------------------------------	--------------------

Tables, chairs, and easels provided. Please bring your own supplies  
Vaccination required for entry

Please Note: Those who use oil paints should bring their own container(s) to remove used solvents. Odorless solvents only. See more important attendee information at: [Workshop Attendee Responsibilities](#)

Thank you to all the PSC members who donate their time and expertise to make these workshops available to PSC members and the Philadelphia art community.



Gallery hours: By appointment: Wednesday, Friday, Saturday, Sunday: 1 PM to 5 PM

September 2021

## Opportunities/Notices

### The Rittenhouse Square Fine Art Show is Back on the Square



An art patron strolling the Rittenhouse Square Fine Art Show in Philadelphia

*Philadelphia, Pennsylvania – August 31, 2021 –* One hundred forty-three artists from around the country return to the Rittenhouse Square in Philadelphia, September 17-19, for one of the nation's best, juried fine art shows. The Rittenhouse Square Fine Art Show (RSFAS) announced its triumphant return to the park in center-city Philadelphia, after a year of presenting fine art shows online for art patrons.

"We're thrilled to be back on the Square. A year and a half of virtual everything has given us all a renewed appreciation for such treasures as Rittenhouse Square and the arts," says Sandra Sedmak Engel, professional artist and Rittenhouse Square Fine Arts Association Board of Directors Chair. "It's our mission to share fine art and the exceptional artists who create it, and we're delighted to be back," she added.

The RSFAS features original-only artwork and was recently ranked the #1 fine art show in the nation by *Sunshine Artist* magazine.

- **WHAT:** The Rittenhouse Square Fine Art Show
- **WHEN:** Friday and Saturday, September 17-18, 11 AM-6 PM; Sunday, September 19, 11 AM-5 PM
- **WHERE:** Rittenhouse Square Park, Philadelphia, Pennsylvania

For more information, please contact:

Steve Oliver, RSFAA Executive Director

(610) 299-1343

[info@rittenhousesquareart.com](mailto:info@rittenhousesquareart.com)



Original artwork is shown by 143 artists from all around the world



## Opportunities/Notices

As a courtesy to our non-PSC-member friends, in support of the Philadelphia artist community, we publish your notices, etc., free of charge. However, contributions to the PSC are always welcome. And, we will gladly consider your application for membership

[Contribute to the Sketch Club Here](#)   [Apply for PSC Membership Here](#)

## Membership

### Stay in touch with current Sketch Club Members

Don't let sheltering in place prevent you from staying in touch with your Sketch Club friends and colleagues. Sketch Club members can access contact information for all current members. Go to the members only page at: <http://sketchclub.org/members-only-2/>. After you log-in with the password sent to you in your acceptance email you can click on the Membership Directory link to access members contact information. Non-Sketch Club friends can find a listing of current members along with their websites if they have one at: <http://sketchclub.org/sample-page/current-members-contact-list/>:

### Recent New Sketch club Members

- Keith Spaar
- Karen Holloway

For a complete listing of Sketch Club members, go to:

<http://sketchclub.org/sample-page/current-members-contact-list/>

### Not a PSC Member?: Join Now!

If you're reading this edition of the Portfolio and you're not a member of the PSC, you should consider joining the more than 200 other Philadelphia area artists who have. The PSC is one of the most active visual art venues serving center city Philadelphia. The PSC is a hands-on organization that offers its members the opportunity to participate in all aspects of creating and presenting work to the public. It presents over 20 scheduled group and solo exhibitions annually and offers a wide range of daily workshops. [Get info and an application here](#).

If you are a member of the PSC, please feel free to share the Portfolio with your artist friends and encourage them to become members.

### Membership Renewal

You can check the status of your membership by going to the Current Members page on the PSC web-site: <http://sketchclub.org/sample-page/memberspace/>. All current members are listed. An asterisk (\*) means that the membership has expired but is within the 60-day grace period for renewal. Names in red are active links to the individual's web site.

Renew Now! <http://sketchclub.org/annual-dues-payment/>

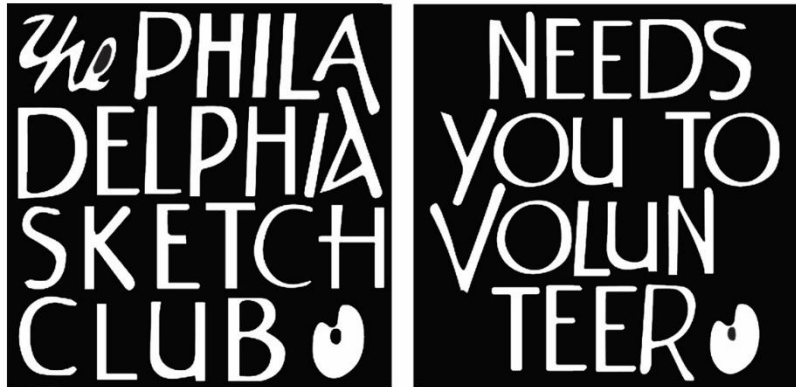
If you have any questions about your membership, please don't hesitate to contact us at [membership@sketchclub.org](mailto:membership@sketchclub.org) or call the office: 215-545-9298.



## Volunteer

### Be an Active Sketch Club Member; Volunteer!!

The Philadelphia Sketch Club is managed entirely by volunteers except for the gallery manager, housekeeping, and bookkeeper.



The PSC always needs volunteer members. Volunteering is one of the most important aspects of being a Sketch Club member and it is the one of the best ways to take advantage of the PSC. You'll be working with colleagues who share the same interests and helping the PSC provide unique services to the visual arts community. Sign up for an activity today.

Here are some of the activities that volunteers perform:

- Chair exhibitions
- Assist in hanging exhibitions
- Covering exhibition drop-offs and pick-ups
- Monitor workshops
- Assist with presentations
- Serve on the Board of Directors
- Serve as Key Circle volunteers
- Publish the Portfolio
- Manage the PSC web site
- Gallery coverage
- Graphics for Portfolio, PSC web site, social media
- Assist in every aspect of managing the club and providing member services

To get involved, contact us at: [info@sketchclub.org](mailto:info@sketchclub.org)

## Support the Sketch Club

### Contribute

Please consider making your tax-deductible contribution now. These funds will be put to good use providing enhanced services to our members and friends.

Membership dues cover only a small portion of the PSC's operating expenses. Competition for funding for arts organizations like the Sketch Club is increasingly competitive and total funding for the arts is shrinking. Your additional support will keep the PSC an active support for visual artists in the Metropolitan Philadelphia area. The Philadelphia Sketch Club is an IRS designated 501(c) (3) non-profit organization.

You can call the office at 215-545-9298, mail checks to the Sketch Club or visit the Contribute page of our Website.

Visit our **Contribute** page of our website to give online at:

<http://sketchclub.org/support-us/>

You can also support the PSC on an ongoing basis when you shop on Amazon. Go to:

<http://smile.amazon.com/> and enter the Philadelphia Sketch Club in the Pick your own charitable organization box.

Your support makes it possible for the PSC to continue providing ongoing daily workshops and numerous annual gallery exhibitions.

### Like, Link & Share

If you're not following the Philadelphia Sketch Club on Facebook re-tweeting Sketch Club tweets yet, it's time that you did. We have well over 2000 Facebook followers. Get the word out about the Sketch Club. Please click the like button and share your comments and invite your friends to like our page.

Follow @PhilaSketchClub on Twitter, we have almost 400 followers. Please click the heart button and re-tweet our announcements.

Include links on your website, blogs and social media to The Philadelphia Sketch Club to increase traction across social media platforms.

Follow us on Facebook, Twitter and Instagram now!



## Member Classifieds



**Your Ad Here... Have something to sell? Looking for something?**  
Contact [portfolio@sketchclub](mailto:portfolio@sketchclub) to arrange for posting.

The Portfolio: The newsletter of the Philadelphia Sketch Club is published monthly. Editor, technical support



Gallery hours: By appointment: Wednesday, Friday, Saturday, Sunday: 1 PM to 5 PM September 2021  
and webmaster: Ken Weiner. Send your member news, announcements and corrections to  
[portfolio@sketchclub.org](mailto:portfolio@sketchclub.org). The due date for all materials is one week before the end of the month.  
Back issues of the Portfolio are available at: <http://sketchclub.org/portfolio-archive/>

Thanks to PSC member volunteer **Ken Weiner** for his ongoing support of Sketch Club  
technology and communications functions.

#### **The Philadelphia Sketch Club**

235 S Camac Street  
Philadelphia, PA 19107  
(215) 545-9298  
<http://sketchclub.org/>  
[gallerymanager@sketchclub.org](mailto:gallerymanager@sketchclub.org)  
[info@sketchclub.org](mailto:info@sketchclub.org)

Gallery Manager: Kaylie Minzola

#### **Officers:**

- President: Richard Harrington
- Vice President: Kenneth Weiner
- Secretary: Elise Anzini
- Treasurer: William Patterson

#### **Board of Directors**

- Jacqueline Barnett
- Renard Edwards
- Stephen Iwanczuk
- Edward Pluciennik
- Charles F. Tarr
- Gail Williams