

Gallery hours: By appointment: Wednesday, Friday, Saturday, Sunday: 1 PM to 5 PM

October 2021



The Philadelphia Sketch Club's
161st Anniversary Gala
Saturday
October 16
6 to 9 PM

POSTPONED
WILL BE RESCHEDULED FOR 2022!

Honoring
John Ennis
James Toogood
Jane Golden

Medal Presentation,
Live Art Auction,
Silent Auction, Cocktails,
Deluxe Hors d'oeuvres, Live Music



Photo by Kyle Cassidy

This Month's Portfolio

Sketch Club Special Events	2
Sketch Club Critique Group	8
Main Gallery Schedule	9
Stewart Gallery Schedule	11
Sketch Club Activities	12
Sketch Club Open Workshop Schedule	18
Opportunities/Notices	19
Membership	21
Volunteer	22
Support the Sketch Club	23
Member Classifieds	23

Send your member news, announcements and corrections to: portfolio@sketchclub.org. The deadline for ALL submissions is 1-week before the end of the month.

Reminder: It's never too late. You can always renew your membership

You may pay online at <http://sketchclub.org/annual-dues-payment/> or mail your check to:

The Philadelphia Sketch Club
235 S. Camac St.
Philadelphia, PA 19107

For questions please contact the Gallery Manager at 215-545-9298 or email:

gallerymanager@sketchclub.org

Late Breaking News – See items that were submitted after the publication date. Go to:

<http://sketchclub.org/late-breaking-news/>

The PSC general email is: info@sketchclub.org

Sketch Club Special Events

Our 161st Anniversary Gala is postponed... Again

Sorry to say, we feel obligated to postpone our 161st Anniversary Gala because two of the three honorees declined to attend in person. The individuals who declined to attend made the decision based purely on their own concerns of attending an indoor function.

We feel we have taken all the necessary precautions regarding the spread of Covid and were prepared to hold the event as scheduled following the health and safety guidelines issued by both the CDC and the City of Philadelphia. We hope that conditions will allow us to reschedule the Gala in Spring of 2022. Watch for updates in the Portfolio and on the Club's website at: <https://sketchclub.org>. Those of you who have purchased tickets: we will honor the tickets when the Gala is held in the Spring, or you can request a refund. Please contact our Gallery Manager, Kaylie Minzola, at gallerymanager@sketchclub.org or 215-545-9298 to make arrangements.

Good News! We are moving ahead with the Members' Show that was originally scheduled to be held concurrently with the Gala. For those who wish to remain at a distance, we will hold a virtual opening via Zoom. For those who would like to attend in person, we will host a live Artists' Reception and award presentation at the Club on Saturday, October 16th, 2 to 4 PM.

All attendees must provide proof of vaccination and masks are required.

Join the Zoom Opening of the 1st Members Gala Invitational Juried Exhibition October 10, 2021, 7:00 PM

<https://us02web.zoom.us/j/84870704710?pwd=OTRtS2dVYUpuMDVlamxueDBpL2cxUT09>

Meeting ID: 848 7070 4710

Passcode: 430751

One tap mobile

+16465588656,,84870704710#,,,,*430751# US (New York)

+13017158592,,84870704710#,,,,*430751# US (Washington DC)

Dial by your location

+1 646 558 8656 US (New York)

+1 301 715 8592 US (Washington DC)

+1 312 626 6799 US (Chicago)

+1 669 900 9128 US (San Jose)

+1 253 215 8782 US (Tacoma)

+1 346 248 7799 US (Houston)

Meeting ID: 848 7070 4710

Passcode: 430751

Find your local number: <https://us02web.zoom.us/j/84870704710?pwd=OTRtS2dVYUpuMDVlamxueDBpL2cxUT09>

Sketch Club Special Events

Sketch Club On-Line Gallery: Always Room for More Work!

There's always room for more work: Submit Now!

The Sketch Club is hosting an on-going open gallery at: <http://sketchclub.org/sketch-club-open-gallery/>. This gallery is open to PSC members and non-members.

Submit up to 4 images of your work or of yourself working along with a very brief description to: portfolio@sketchclub.org.

Include for your work: Your name; Title; size; and medium.

For photos of yourself include: who you are and a brief description of the image.

Sketch Club Special Events

Opening Events Consistant with CDC guidelines

Welcome Back!

Sketchclub.org • (215) 545-9298 • 235 S Camac St, Philadelphia, PA 19107

Workshops

Fees

\$9 Model Workshop sessions, \$8 for members

\$6 for full time students

Model Tips are optional but appreciated

Bring your drawing and painting materials!



Life Model

Tuesday	12:00 pm - 3:00 pm Extended pose	Monitor: Jacqueline Barnett
Saturday	9:30am-12:30pm Extended pose	Monitor: Jacqueline Barnett

Costumed Model

Thursday	12:00pm-3:00pm Extended pose	Monitor: Bob Bohne
----------	---------------------------------	--------------------

Tables, chairs, and easels provided. Please bring your own supplies
Vaccination required for entry

The Sketch Club is offering in-person workshops in compliance with CDC guidelines.

Member feedback:

Congratulations on the reopening.

I thank you folks who kept things together last year.

It was great that you took advantage of the down time to do the positive repairs and upkeep that was needed in our club building. I want you to know how much I appreciate what all of you did. - Rich Alliger

Sketch Club Special Events

Workshop Attendee Responsibilities

During this period of returning to normal, we must remember to observe that some may choose be wearing masks and to respect a 6 foot distance.

Fees will be collected after the second pose. \$9 for non-members, \$8 for members, \$6 for full time students.

When setting up, please give space for others behind or in front of you. Make sure those in back can see the model.

Please observe the easel arrangement in the storage closet and replace your easel in the same manner.

Please make every effort to wipe down your easel when leaving and make sure around your easel is clear of charcoal or pastel dust.

Please put back your easel if leaving early. Use the 10-minute rest to clean up.

Please to not use turpentine for oils.

Please do all aerosol spraying outdoors, front or back yard.

If there is a change in the models pose, please inform the monitor instead of the model.

There will be two snacks available each week. The person who brought them will take these home, only coffee and tea will remain in the cabinet.

Please try to come in early to find an optimal spot to work in, and also not to cause as much disturbance during workshop time.

Anyone who needs a locker or has fees for a locker should talk to Chuck Tarr, usually here on Tuesdays, or contact the office at 215-545-9298.

Thank you for your efforts to make workshops as efficient and rewarding as possible!

Sketch Club Special Events

On-Line Resources

- The Sketch Club Critique Group: <https://www.facebook.com/groups/PSCCritique>
- The Sketch Club Open Gallery: <https://sketchclub.org/sketch-club-open-gallery/>
- The Sketch Club's web site: sketchclub.org
- Our Facebook page: <https://www.facebook.com/thesketchclub/>
- Instagram: <https://www.instagram.com/philadelphiasketch/>
- Twitter: <https://twitter.com/PhilaSketchClub>
- Members: Stay in touch with other PSC colleagues. For contact information, go to the members only page at: <http://sketchclub.org/members-only-2/>. See Stay in touch with current Sketch Club Members in the members section below for instructions.

Non-Sketch Club friends can find a listing of current members names and business websites if they have one at:

<http://sketchclub.org/sample-page/current-members-contact-list/>.

Support the Sketch Club through Amazon Smile

Make free donations to the Sketch Club anytime you shop at Amazon Smile. Remember that anyone who purchases through Amazon can have Amazon make a contribution to the Club for most every purchase you make. Just log in and go to: smile.amazon.com -From there you can select the Philadelphia Sketch Club as your non-profit charity . Done. Then the Club receives a percentage of most every purchase you make. It is a painless way to contribute to the Club's welfare. Most purchases made on your mobile app and from Whole Foods qualify too! Go to smile.amazon.com/about/ to learn more.

Sketch Club Special Events

Ongoing Facilities Renovation

Minor projects are ongoing. We can't wait to share our updated home with our members and friends. Major work on the upstairs gallery and stairways is complete.

Additional work recently completed includes:

- Refurbish gallery pedestals
- Refurbish model stage and other accessories
- Exterior Painting
- Replace men's room sink faucet
- Refinishing gallery steps
- Reorganizing the ratskeller (basement)
- Repair of roof leak and repair Gallery cracks in ceiling and upper walls and area was painted
- Replace AC circuit board
- Paint upstairs gallery lockers
- Paint upstairs gallery storage closet interiors
- Repair ceiling tiles in the upstairs storage area
- Annual service of heating and AC units
- Major servicing of water/sewer services
- Lighting upgrade in Rathskeller
- Lighting upgrade in back stairway
- Lighting upgrade in water heater utility closet
- Numerous other refurbishing, repairs, and required services

We need your help: This required maintenance of our Sketch Club home is costly. We ask our members and friends to help keep the PSC financially healthy. Friends, please consider contributing to our maintenance fund. Members, please consider financial support beyond membership.

Contribute Now! [Make an On-line Contribution](#)

Sketch Club Critique Group

The Sketch Club Critique FaceBook Group

Curator's Pick – Don Gauger

The concept of "Virtual Reality" (VR) artist tools is covered nicely in a BBC online article "*Google's Tilt Brush VR painting app goes open source*".

Be sure to watch the video "3D painting makes audiences part of the art" further down the page to witness 3-dimensional painting demonstrations.

Link: <https://www.bbc.com/news/technology-55826249>



Join the Critique Facebook Group

Join your Club colleagues online at the "Philadelphia Sketch Club Critique"-- a Private group for Active PSC members only on Facebook.

Colleagues, please join in and contribute to your online art community. We all miss the camaraderie we enjoy at the Club house. The "Philadelphia Sketch Club Critique" is a chance to get together online until we can gather once more around the punch bowl and raise a toast, "to the Sketch Club, past, present and future."

Here's how it works:

- Active members go to the new "Philadelphia Sketch Club Critique" page and request access, which is available to all Club members in good standing.
- Once in post your work and watch as other members' post their artwork for critique.
- More details will be posted within the group including the option to be considered for a monthly "Highlights", a curated online gallery to be published on our external site/Instagram/Twitter channels.

This FaceBook Group is private; this means that as Members submit their work others are invited to critique each other in a professional and respectful way.

Critique Group Links:

- You can find a link on the Sketch Club website: <https://sketchclub.org/>
- The Critique Group's Facebook Page: <https://www.facebook.com/groups/PSCCritique>
- The PSC's main FaceBook page: <https://www.facebook.com/thesketchclub>

Sketch Club Critique Group

"Why are people collecting NFTs?"

This is a six-minute online video done by the BBC that attempts to answer that question. -- Don Gauger

<https://www.bbc.co.uk/programmes/p09wgqtx>

News from N. C. Wyeth Country -- Don Gauger

PSC members will be pleased to know, as reported by Bill Rettew for the Daily Local News September 18, 2021, edition, that "Paintings safe after flooding at Brandywine River Museum". That day, my 100 mile journey north by train and car was continuously interrupted by alternating "tornado warnings" and "flash flood" warnings, great news to hear while crossing on a rail-bridge over the head of the Chesapeake. Days later areas of damage became known, houses along the Brandywine River from Coatesville, Downingtown, Lenape to Chadds Ford were destroyed or severally flooded. Those that know old Route 100 near the Delaware border, the SIW farm-stand next to the historic Cossart train station, was destroyed with water crossing the road, surmounting a stone wall and flooding five feet up the first floor of the first hillside home on the Haskell farm.

Most houses north through Chadds Ford had their contents on their lawn to dry out or were simply bagged. The USGC measured the prior historic flood levels for the Brandywine River at Chadds Ford PA at 17.02" There had been some prior flooding on June 8th, 2021. On September 1st Tropical Storm Ida left enough rain as it passed through and Chadds Ford for the Brandywine River to reached about 21" flood stage.

No one living remembers seeing such damage. The museum staff had good flood preparedness plans in place and all of their artwork is safe. The education and office spaces on the ground floor were heavily damaged. No reopening date has been announced yet. Volunteers are gathering to help clean up the museum; see their website to learn of volunteer clean-up opportunities.

Main Gallery Schedule

[See the Sketch Club Open Gallery](#)

[See the 2021 Exhibition Schedule](#)

[Important Dates for all PSC Activities](#)

Main Gallery Schedule

1st Members Gala Invitational Juried Exhibition

- Available Online Now!

Opening in the Upstairs Gallery at the Sketch Club

- October 16, 2021, 2:00 – 4:00 PM
- Awards Presented
- Proof of vaccination and masks required

The 1st Members Gala Invitational Juried Exhibition is now available online at:
<https://sketchclub.org/1st-members-gala-invitational-juried-exhibition/#gallery>

See the 77 works created by 33 Sketch Club Members on the virtual gallery.

Awards will be announced during the virtual Zoom opening: **October 10, 2021, at 7:00 PM**

Join the Zoom Opening of the 1st Members Gala Invitational Juried Exhibition October 10, 2021, 7:00 PM

<https://us02web.zoom.us/j/84870704710?pwd=OTRtS2dVYUpuMDVlamxueDBpL2cxUT09>

Meeting ID: 848 7070 4710

Passcode: 430751

One tap mobile

+16465588656,,84870704710#,,,,*430751# US (New York)

+13017158592,,84870704710#,,,,*430751# US (Washington DC)

Dial by your location

+1 646 558 8656 US (New York)

+1 301 715 8592 US (Washington DC)

+1 312 626 6799 US (Chicago)

+1 669 900 9128 US (San Jose)

+1 253 215 8782 US (Tacoma)

+1 346 248 7799 US (Houston)

Meeting ID: 848 7070 4710

Passcode: 430751

Find your local number: <https://us02web.zoom.us/j/kcxU7exuaf>

Gallery hours: By appointment: Wednesday, Friday, Saturday, Sunday: 1 PM to 5 PM

October 2021

Stewart Gallery Schedule



**Exhibition space in
the Stewart Gallery
is available for PSC
Members!**

Reserve the gallery by
contacting our
Exhibition Coordinator:
exhibitions@sketchclub.org

The space is \$150 for a
month. Members can
show once in the Stewart
Gallery per year.

[See the Sketch Club Open Gallery](#)

[See the 2021 Exhibition Schedule](#)

[Important Dates for all PSC Activities](#)

Sketch Club Activities

Critique Night: TBD

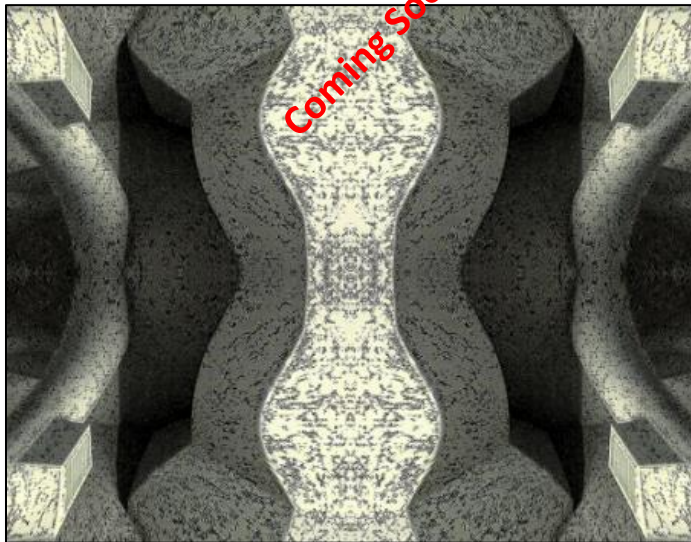
Open to PSC Members and Non-Members

Critique Night is held in the Library of the Sketch Club every third Wednesday beginning at 7 PM. Bring work you have finished, work in progress, or just sketches for work you're planning! Photos, digital work, drawings, all mediums are welcome; we can project digital images on a screen for review, so you have the option to show work that may be too big or too heavy to transport to the Club. There is no one individual directing the critique, just your fellow artists and peers. Facilitated/monitored by Rich Harrington, PSC President



Thanks to PSC member volunteer **Rich Harrington** for organizing and monitoring this event

Photo Circle: TBD



We will discuss new group activities and possibilities for expansion. The Photo Circle meets every 2nd Thursday at 6:30 PM. You can contact Steve anytime at stphniwan@gmail.com or 215-300-9192 (cell). **Steve Iwanczuk**, Photo Circle Monitor and Member of Philadelphia Sketch Club Board of Directors.

Thanks to PSC member volunteer **Steve Iwanczuk** for organizing and monitoring this event.

Art Natters: Members News

Visit Sketch Club Online Gallery

Go to the Sketch Club's on-going open gallery to see recent updates with work by PSC members and friends:

<http://sketchclub.org/sketch-club-open-gallery/>.

Members and friends can submit up to 4 images. Send your submissions to:

portfolio@sketchclub.org.

Include for your work: Your name; Title; size; and medium.

For photos of yourself, include: Who you are and a brief description of the image.

Sketch Club members **Su Knoll Horty's** painting, Color Pops 32, was pictured in the Philadelphia Inquirer on Sunday, September 19, 2021 in the Fall Arts Preview, Galleries. "A look at 13 exhibitions to check out at smaller venues" by Cassie Owens, Staff Writer. "Color in Exuberance through Dec. 19, The Yard). Curated by Jessica Rice and InLiquid, this abstract art group show contains a multiplicity of shades in paintings, sculptural works, and prints from Diane Lachman, Terri Fridkin, Lorraine Glessner, Catherine Gontarek, Su Knoll Horty, and Dolores Poacelli – all works drenched in color. (inliquid.org)"



Color Pops 32

Gallery hours: By appointment: Wednesday, Friday, Saturday, Sunday: 1 PM to 5 PM

October 2021

Art Natters: Members News

From Sketch Club member **Eric Hall**



Summer Shade - 30" X 40" - Oil/Canvas



Whitefish Point UP - 16" X 20" - Oil/Canvas



Art of Conversation - 24" X 30" - Oil/Canvas



For Sale (Old Wagon) - 12" X 16" - Oil/Canvas

See more of Eric's work at: erichallpaintings.com

Gallery hours: By appointment: Wednesday, Friday, Saturday, Sunday: 1 PM to 5 PM

October 2021

Art Natters: Members News

Sketch Club member **Deborah Riccardi's** Works are on Exhibition at the following venues:

Phillips' Mill 92nd Juried Show

Sept. 25th to Oct. 31, 2021

Live at the Mill and Online

Admission:

Adults 5.00

Senior Citizens 4.00

Students 2.00

[www. PHILLIPSMILL.ORG](http://www.PHILLIPSMILL.ORG)

215 862 0582

Located 1 ½ miles north of New Hope, PA

2619 River Road (Rte 32) New Hope, PA 18938



Deborah Riccardi Mom, Haiti
Oil on canvas 40" x 30" x 3"

Gallery hours: By appointment: Wednesday, Friday, Saturday, Sunday: 1 PM to 5 PM

October 2021

Art Natters: Members News

Deborah Riccardi: Hicks Art Center Gallery

Faculty Exhibition

Bucks County Community College

Sept. 9th -Dec. 6, 2021

275 Swamp Road, Newtown, PA 18940

Gallery hours:

Monday-Friday 9 a.m. to 4 p.m.

Free admission call 215-968-8425 for more
information



Figure 1 Deborah Riccardi, Play, Guatemala,
digital photography 8" x 12" x 1"



Deborah Riccardi, Tree of Life Series, Just Another
Day, oil on canvas 36" x 24" x 2"



Deborah Riccardi, Tree of Life Series, Roots
oil on wood 36"x24"x2"

Gallery hours: By appointment: Wednesday, Friday, Saturday, Sunday: 1 PM to 5 PM

October 2021

Art Natters: Members News

Deborah Riccardi – 161st Members Gala Invitational Exhibition

Oct. 16th -Nov. 30th, 2021

Gallery Hours Wed, Fri, Sat, Sun 1-5 pm by appointment

215 545 9298

minfo@sketchclub.org



Deborah Riccardi, Water Pump, Papua New Guinea,
oil on canvas



Deborah Riccardi, Unicycle Factory,
oil on wood



Deborah Riccardi, Strawberry Mansion Bridge,
oil on wood

Sketch Club Open Workshop Schedule

All workshops are open to the public. There is no need to register before attending. You do NOT have to be a member of the Philadelphia Sketch Club to participate in the workshops. Our workshops are open to anyone who is interested in drawing, painting, or printmaking. All skill levels are welcome.

Welcome Back!

Sketchclub.org • (215) 545-9298 • 235 S Camac St, Philadelphia, PA 19107

Workshops

Fees

\$9 Model Workshop sessions, \$8 for members
\$6 for full time students

Model Tips are optional but appreciated

Bring your drawing and painting materials!



Life Model

Tuesday	12:00 pm - 3:00 pm Extended pose	Monitor: Jacqueline Barnett
Saturday	9:30am-12:30pm Extended pose	Monitor: Jacqueline Barnett

Costumed Model

Thursday	12:00pm-3:00pm Extended pose	Monitor: Bob Bohne
----------	---------------------------------	--------------------

Tables, chairs, and easels provided. Please bring your own supplies
Vaccination required for entry

Please Note: Those who use oil paints should bring their own container(s) to remove used solvents. Odorless solvents only. See more important attendee information at: [Workshop Attendee Responsibilities](#)

Thank you to all the PSC members who donate their time and expertise to make these workshops available to PSC members and the Philadelphia art community.

Opportunities/Notices

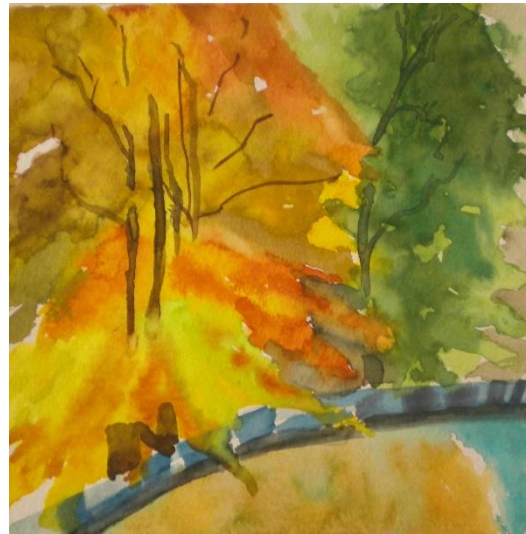
Kara Coleman is an artist living and working in Allentown, Pennsylvania. She lived in Philadelphia and worked in sales and marketing there for 16 years and studied painting in the evenings. Now a full-time artist, she enjoys working in both oil and watercolor and has exhibited in juried shows in Pennsylvania, New Jersey and Arizona.



Winter in the Woods, watercolor on paper.



Inside a Vase, oil on panel



Abstract of a Changing Season, watercolor on paper.

Opportunities/Notices

Christine Lafuent Workshops

Upcoming Online Workshops



Atmospheric Color in Plein Air Painting

In this five-week class, I will demonstrate painting *en plein air* in oil, including how to achieve distance, atmosphere, and a sense of mood. I will demonstrate a method of abstraction in working directly from nature. Learn how to organize the palette in order to be flexible with changing sun and weather conditions. We will also discuss ways to experiment beyond the motif in the studio!
Open to all levels.

[Winslow Art Center](#)

5 Mondays: October 4 - November 1, 2021

1pm-4pm Eastern

10am-1pm Pacific

[Winslow Art Center](#)



Basic Color in Alla Prima Still Life Painting

This six week oil-painting course focuses on a series of limited and full palettes for *Alla Prima* painting. Color concepts such as tone, temperature, saturation, and atmosphere will be explored in each palette. I will demonstrate composition, tonal design, and principles of oil viscosity in wet-into-wet paint handling. The class will consist of lecture and demonstration, group critique, and independent studio practice. Students will paint from observation using their own still life arrangement.
Beginners Welcome!

[Pennsylvania Academy of the Fine Arts](#)

6 Wednesdays: November 3- December 8, 2021

To register, please go to www.pafa.org

or call 215-972-2028

[Pennsylvania Academy of the Fine Arts](#)

As a courtesy to our non-PSC-member friends, in support of the Philadelphia artist community, we publish your notices, etc., free of charge. However, contributions to the PSC are always welcome. And, we will gladly consider your application for membership

[Contribute to the Sketch Club Here](#)

[Apply for PSC Membership Here](#)

Membership

Stay in touch with current Sketch Club Members

Don't let sheltering in place prevent you from staying in touch with your Sketch Club friends and colleagues. Sketch Club members can access contact information for all current members. Go to the members only page at: <http://sketchclub.org/members-only-2/>. After you log-in with the password sent to you in your acceptance email you can click on the Membership Directory link to access members contact information. Non-Sketch Club friends can find a listing of current members along with their websites if they have one at: <http://sketchclub.org/sample-page/current-members-contact-list/>:

Recent New Sketch club Members

- Garry Grissom
- Helena Grady
- John Stevens
- Katrina Rakowski
- Jon Rettich

For a complete listing of Sketch Club members, go to:

<http://sketchclub.org/sample-page/current-members-contact-list/>

Not a PSC Member?: Join Now!

If you're reading this edition of the Portfolio and you're not a member of the PSC, you should consider joining the more than 200 other Philadelphia area artists who have. The PSC is one of the most active visual art venues serving center city Philadelphia. The PSC is a hands-on organization that offers its members the opportunity to participate in all aspects of creating and presenting work to the public. It presents over 20 scheduled group and solo exhibitions annually and offers a wide range of daily workshops. [Get info and an application here.](#)

If you are a member of the PSC, please feel free to share the Portfolio with your artist friends and encourage them to become members.

Membership Renewal

You can check the status of your membership by going to the Current Members page on the PSC web-site: <http://sketchclub.org/sample-page/memberspace/>. All current members are listed. An asterisk (*) means that the membership has expired but is within the 60-day grace period for renewal. Names in red are active links to the individual's web site.

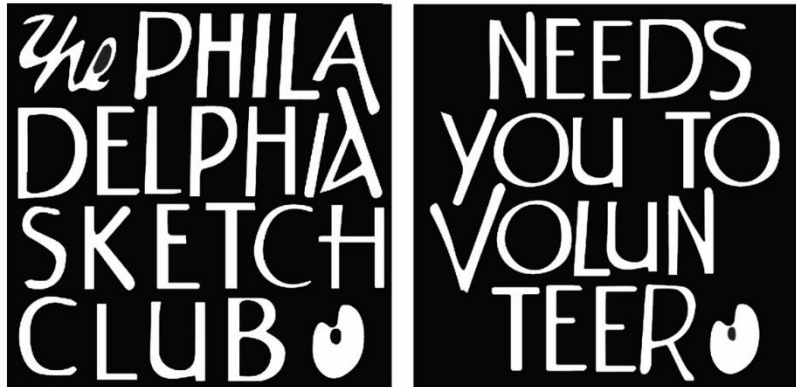
Renew Now! <http://sketchclub.org/annual-dues-payment/>

If you have any questions about your membership, please don't hesitate to contact us at membership@sketchclub.org or call the office: 215-545-9298.

Volunteer

Be an Active Sketch Club Member; Volunteer!!

The Philadelphia Sketch Club is managed entirely by volunteers except for the gallery manager, housekeeping, and bookkeeper.



The PSC always needs volunteer members. Volunteering is one of the most important aspects of being a Sketch Club member and it is the one of the best ways to take advantage of the PSC. You'll be working with colleagues who share the same interests and helping the PSC provide unique services to the visual arts community. Sign up for an activity today.

Here are some of the activities that volunteers perform:

- Chair exhibitions
- Assist in hanging exhibitions
- Covering exhibition drop-offs and pick-ups
- Monitor workshops
- Assist with presentations
- Serve on the Board of Directors
- Serve as Key Circle volunteers
- Publish the Portfolio
- Manage the PSC web site
- Gallery coverage
- Graphics for Portfolio, PSC web site, social media
- Assist in every aspect of managing the club and providing member services

To get involved, contact us at: info@sketchclub.org

Support the Sketch Club

Contribute

Please consider making your tax-deductible contribution now. These funds will be put to good use providing enhanced services to our members and friends.

Membership dues cover only a small portion of the PSC's operating expenses. Competition for funding for arts organizations like the Sketch Club is increasingly competitive and total funding for the arts is shrinking. Your additional support will keep the PSC an active support for visual artists in the Metropolitan Philadelphia area. The Philadelphia Sketch Club is an IRS designated 501(c) (3) non-profit organization.

You can call the office at 215-545-9298, mail checks to the Sketch Club or visit the Contribute page of our Website.

Visit our **Contribute** page of our website to give online at:

<http://sketchclub.org/support-us/>

You can also support the PSC on an ongoing basis when you shop on Amazon. Go to:

<http://smile.amazon.com/> and enter the Philadelphia Sketch Club in the Pick your own charitable organization box.

Your support makes it possible for the PSC to continue providing ongoing daily workshops and numerous annual gallery exhibitions.

Like, Link & Share

If you're not following the Philadelphia Sketch Club on Facebook re-tweeting Sketch Club tweets yet, it's time that you did. We have well over 2000 Facebook followers. Get the word out about the Sketch Club. Please click the like button and share your comments and invite your friends to like our page.

Follow @PhilaSketchClub on Twitter, we have almost 400 followers. Please click the heart button and re-tweet our announcements.

Include links on your website, blogs and social media to The Philadelphia Sketch Club to increase traction across social media platforms.

Follow us on Facebook, Twitter and Instagram now!



Member Classifieds



Your Ad Here... Have something to sell? Looking for something?
Contact portfolio@sketchclub to arrange for posting.

The Portfolio: The newsletter of the Philadelphia Sketch Club is published monthly. Editor, technical support



Gallery hours: By appointment: Wednesday, Friday, Saturday, Sunday: 1 PM to 5 PM

October 2021

and webmaster: Ken Weiner. Send your member news, announcements and corrections to portfolio@sketchclub.org. The due date for all materials is one week before the end of the month. Back issues of the Portfolio are available at: <http://sketchclub.org/portfolio-archive/>

Thanks to PSC member volunteer **Ken Weiner** for his ongoing support of Sketch Club technology and communications functions.

The Philadelphia Sketch Club

235 S Camac Street
Philadelphia, PA 19107
(215) 545-9298
<http://sketchclub.org/>
gallerymanager@sketchclub.org
info@sketchclub.org

Gallery Manager: Kaylie Minzola

Officers:

- President: Richard Harrington
- Vice President: Kenneth Weiner
- Secretary: Elise Anzini
- Treasurer: William Patterson

Board of Directors

- Jacqueline Barnett
- Renard Edwards
- Stephen Iwanczuk
- Edward Pluciennik
- Charles F. Tarr
- Gail Williams