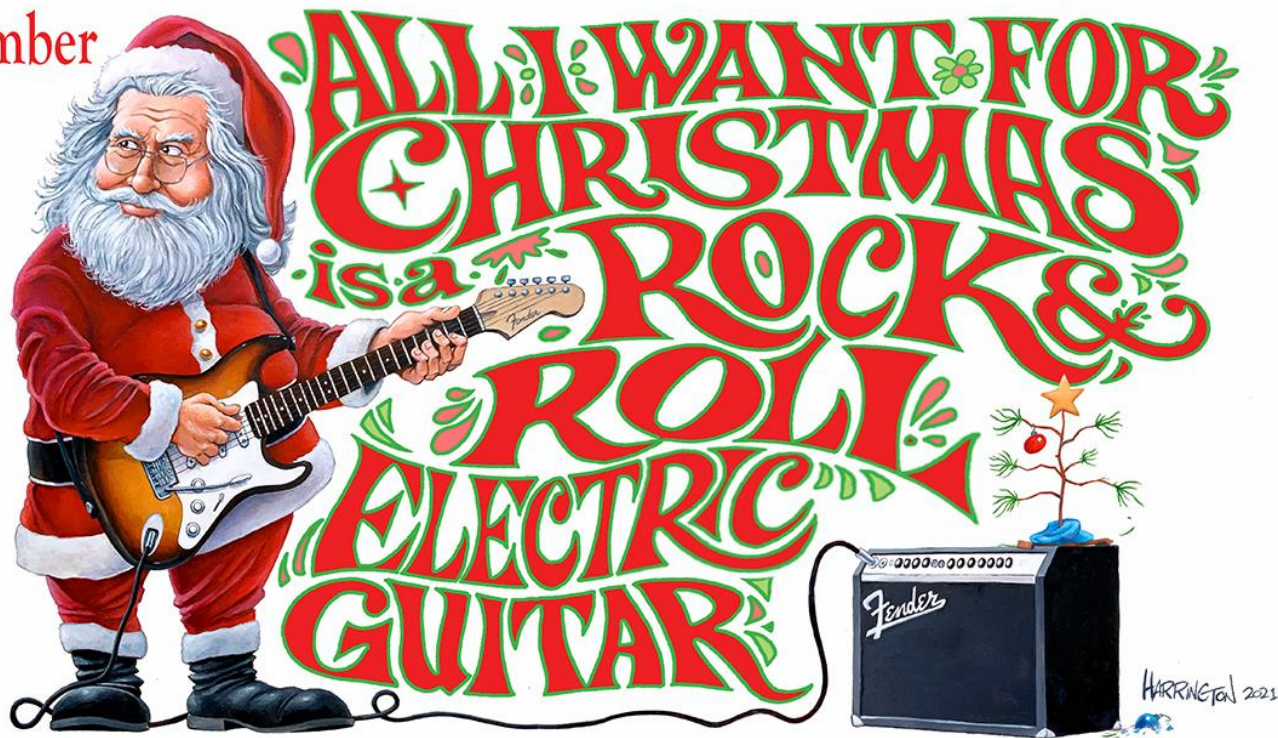


Gallery hours: By appointment: Wednesday, Friday, Saturday, Sunday: 1 PM to 5 PM

December 2021

December  
2021



Rich Harrington

## This Month's Portfolio

Sketch Club Special Events	2
Sketch Club Critique Group	7
Main Gallery Schedule	8
Stewart Gallery Schedule	12
Sketch Club Open Workshop Schedule	17
Opportunities/Notices	18
Membership	19
Volunteer	20
Support the Sketch Club	21
Member Classifieds	21

Send your member news, announcements, and corrections to: [portfolio@sketchclub.org](mailto:portfolio@sketchclub.org). The deadline for ALL submissions is 1-week before the end of the month.

Reminder: It's never too late. You can always renew your membership

You may pay online at <http://sketchclub.org/annual-dues-payment/> or mail your check to:

The Philadelphia Sketch Club

235 S. Camac St.

Philadelphia, PA 19107

For questions please contact the Gallery Manager at 215-545-9298 or email:

[gallerymanager@sketchclub.org](mailto:gallerymanager@sketchclub.org)

Late Breaking News – See items that were submitted after the publication date. Go to:

<http://sketchclub.org/late-breaking-news/>

The PSC general email is: [info@sketchclub.org](mailto:info@sketchclub.org)

## Sketch Club Special Events

### Editor's Note

As 2021 draws to a close, I have some observations that I'd like to share with you, our Sketch Club members, and friends. I started editing the Portfolio with the June 2013 edition. The December 2021 edition represents the 104<sup>th</sup> edition that I've published. It started as a temporary effort when Jeff Gola had to give up the responsibility to tend to his artistic career.

"I'll just do it for a few months," I thought. Well, obviously, that didn't turn out to be the case. As the months flew by, it became my goal to make each edition an interesting combination of art event announcements, member activities, and administrative communications. All the combined tasks to put the Portfolio together take about a day per month. I enjoy doing it.

Due to the continued COVID pandemic disruption to all our lives over the past 18 months, on-site PSC activities were curtailed, and I have encouraged increased use of the Portfolio as an alternative venue. However, over the past few months I've noticed a significant reduction in the number of monthly submissions by members and friends. There were very few for the December edition.

As we look forward to 2022, I encourage you to participate in PSC activities by submitting items of interest to the Portfolio frequently. As those of you who have submitted previously know, I make every effort to accommodate your communication needs.

Here are additional opportunities that I encourage you to explore.

- Workshops: See the schedule: [Workshop Schedule](#). Starting in 2021 we are planning a Friday night Still Life workshop monitored by Sketch Club member **Tom Kohlmann**.
- Our online Open Gallery: [See the Open Gallery](#)
- The Facebook Critique Group for members only: [Visit the Philadelphia Sketch Club Critique](#). Monitored by Sketch Club member **Don Gauger**
- Watch for more in-person activities as future events unfold

Keep the Philadelphia Sketch Club strong and active. Get involved!

Best for the coming year,  
Ken Weiner, PSC Vice President and Portfolio Editor

## Sketch Club Special Events

### Opening Events Consistant with CDC guidelines

*Welcome Back!*

Sketchclub.org • (215) 545-9298 • 235 S Camac St, Philadelphia, PA 19107

*Workshops*

#### Fees

\$9 Model Workshop sessions, \$8 for members  
\$6 for full time students

Model Tips are optional but appreciated

\*\*\*Bring your drawing and painting materials!\*\*\*



*Life Model*

Monday	6:30 pm - 9:30 pm Extended pose	Monitor: Emily Hirtle
Tuesday	12:00 pm - 3:00 pm Extended pose	Monitor: Jacqueline Barnett
Wednesday	6:30 pm - 9:30 pm Extended pose	Monitor: Valerie Lang
Saturday	9:00am - 12:30pm Extended pose	Monitor: Jacqueline Barnett

*Costumed Model*

Thursday	12:00pm-3:00pm Extended pose	Monitor: Bob Bohne
----------	---------------------------------	--------------------

Tables, chairs, and easels provided. Please bring your own supplies  
Vaccination required for entry

#### Coming in 2022!

We are planning to add a Friday evening still life workshop to the schedule. Sketch Club member **Tom Kohlmann** will monitor.

Watch for emails or visit <https://sketchclub.org> for more details on the still life workshop and holiday cancellations.

The Sketch Club offers in person workshops in compliance with CDC guidelines.

## Sketch Club Special Events

### Workshop Attendee Responsibilities

During this period of returning to normal, we must remember to observe that some may choose be wearing masks and to respect a 6 foot distance.

Fees will be collected after the second pose. \$9 for non-members, \$8 for members, \$6 for full time students.

When setting up, please give space for others behind or in front of you. Make sure those in back can see the model.

Please observe the easel arrangement in the storage closet and replace your easel in the same manner.

Please make every effort to wipe down your easel when leaving and make sure around your easel is clear of charcoal or pastel dust.

Please put back your easel if leaving early. Use the 10-minute rest to clean up.

Please to not use turpentine for oils.

Please do all aerosol spraying outdoors, front or back yard.

If there is a change in the models pose, please inform the monitor instead of the model.

There will be two snacks available each week. The person who brought them will take these home, only coffee and tea will remain in the cabinet.

Please try to come in early to find an optimal spot to work in, and also not to cause as much disturbance during workshop time.

Anyone who needs a locker or has fees for a locker should talk to Chuck Tarr, usually here on Tuesdays, or contact the office at 215-545-9298.

Thank you for your efforts to make workshops as efficient and rewarding as possible!



## Sketch Club Special Events

### Photography Class: The Fine Art of Professional Model Photography

A two-part class

At the Philadelphia Sketch Club with Jenny Lynn, instructor

Maximum attendance: 6 students

Tuition: \$289.00

#### Part 1: Live Model Photography

Sunday, January 23, 2022, 10:00 am - 1:00 PM  
at the Philadelphia Sketch Club.

Experience the artistic opportunities of directing and photographing a professional model in a spacious, skylight-lit studio at America's oldest artists club. We'll study the figure in various poses and experiment with creative positioning to create compelling images. We'll begin by discussing camera settings, composition and using light for images with a fine art sensibility. Each participant in our small group will take a turn directing and posing the model to get past the initial nervousness of being a director.



#### Part 2: Critique and Review

Sunday, January 30, 2022, 10:00 am - 11:30 am  
*Live, fully interactive virtual learning*

We'll review your photographs from the studio shoot, assessing what worked successfully and what needs further exploration. By the time the class concludes, you will be on a path to developing your personal style and have greater confidence to set up and take more creative pictures of models as well as everyday people.

For more information and to purchase tickets here: <https://princetonphotoworkshop.com/classes/pamodel>

## Sketch Club Special Events

### Sketch Club On-Line Gallery: **Always Room for More Work!**

There's always room for more work: Submit Now!

The Sketch Club is hosting an on-going open gallery at: <http://sketchclub.org/sketch-club-open-gallery/>. This gallery is open to PSC members and non-members.

Submit up to 4 images of your work or of yourself working along with a very brief description to: [portfolio@sketchclub.org](mailto:portfolio@sketchclub.org).

Include for your work: Your name; Title; size; and medium.

For photos of yourself include: who you are and a brief description of the image.

### On-Line Resources

- The Sketch Club Critique Group: <https://www.facebook.com/groups/PSCCritique>
- The Sketch Club Open Gallery: <https://sketchclub.org/sketch-club-open-gallery/>
- The Sketch Club's web site: [sketchclub.org](http://sketchclub.org)
- Our Facebook page: <https://www.facebook.com/thesketchclub/>
- Instagram: <https://www.instagram.com/philadelphiasketch/>
- Twitter: <https://twitter.com/PhilaSketchClub>
- Members: Stay in touch with other PSC colleagues. For contact information, go to the members only page at: <http://sketchclub.org/members-only-2/>. See Stay in touch with current Sketch Club Members in the members section below for instructions.

**Non-Sketch Club friends can find a listing of current members names and business websites if they have one at:**

<http://sketchclub.org/sample-page/current-members-contact-list/>.

### Support the Sketch Club through Amazon Smile

Make free donations to the Sketch Club anytime you shop at Amazon Smile. Remember that anyone who purchases through Amazon can have Amazon make a contribution to the Club for most every purchase you make. Just log in and go to: [smile.amazon.com](http://smile.amazon.com) -From there you can select the Philadelphia Sketch Club as your non-profit charity . Done. Then the Club receives a percentage of most every purchase you make. It is a painless way to contribute to the Club's welfare. Most purchases made on your mobile app and from Whole Foods qualify too! Go to [smile.amazon.com/about/](http://smile.amazon.com/about/) to learn more.

## Sketch Club Critique Group

### The Sketch Club Critique FaceBook Group

#### Curator's Pick – Don Gauger

The concept of "Virtual Reality" (VR) artist tools is covered nicely in a BBC online article "*Google's Tilt Brush VR painting app goes open source*".

Be sure to watch the video "3D painting makes audiences part of the art" further down the page to witness 3-dimensional painting demonstrations.

Link: <https://www.bbc.com/news/technology-55826249>



#### Join the Critique Facebook Group

Join your Club colleagues online at the "Philadelphia Sketch Club Critique"-- a Private group for Active PSC members only on Facebook.

Colleagues, please join in and contribute to your online art community. We all miss the camaraderie we enjoy at the Club house. The "Philadelphia Sketch Club Critique" is a chance to get together online until we can gather once more around the punch bowl and raise a toast, "to the Sketch Club, past, present and future."

#### Here's how it works:

- Active members go to the new "Philadelphia Sketch Club Critique" page and request access, which is available to all Club members in good standing.
- Once in post your work and watch as other members' post their artwork for critique.
- More details will be posted within the group including the option to be considered for a monthly "Highlights", a curated online gallery to be published on our external site/Instagram/Twitter channels.

This FaceBook Group is private; this means that as Members submit their work others are invited to critique each other in a professional and respectful way.

#### Critique Group Links:

- You can find a link on the Sketch Club website: <https://sketchclub.org/>
- The Critique Group's Facebook Page: <https://www.facebook.com/groups/PSCCritique>
- The PSC's main FaceBook page: <https://www.facebook.com/thesketchclub>

## Sketch Club Critique Group

### The Sketch Club's Own Garth Herrick has a near escape -- shared by Don Gauger

On Saturday, September 18, while on his bicycle, had the first in a series of heat attacks; a Good Samaritan called 911, and applied CPR until the Ambulance Crew arrived. The Ambulance Crew continued intensive care, which was continued upon arriving at Jefferson Hospital, whose staff then lowered his body temperature to induce a coma and stop permanent damage. Garth has no recollection of those days of unconsciousness.

On Sunday September 28 he became conscious. No broken bones, just a few scars, in no pain and feeling quite well! He had a tracheotomy with a flapper valve that allows him to speak and swallow real food. Garth lost at least 45 pounds and cannot yet use a walker but hopes to soon.

Garth writes, "While in the hospital I caught the worst case of pneumonia I've ever had; Weeks later, the pneumonia is gone, but my lungs are still healing as I write. Today, Monday afternoon I am having stent surgery to bypass the fatal artery in my heart. Its been quite a long and hard journey. My love, Dr. Ann H. Peters, set up a very successful GO FUND ME campaign to at least keep my studio paid, and also cover some needed physical therapy expenses.

<https://www.gofundme.com/f/help-garth-herricks-return-to-studio-and-life?>

I do not know how to express my sincere thanks to all who are supporting me through kind words, prayers, and funds. I love and appreciate you all! Life goes on!"

## Main Gallery Schedule

[See the Sketch Club Open Gallery](#)

[See the 2021 Exhibition Schedule](#)

[Important Dates for all PSC Activities](#)



## Main Gallery Schedule

### 1st Members Gala Invitational Juried Exhibition

**The 1st Members Gala Invitational Juried Exhibition extended online through December**  
[See the Online Gallery](#)

See the 77 works created by 33 Sketch Club Members on the virtual gallery.

[See the Exhibition Catalog Here](#)

Our virtual Zoom opening and our opening at the PSC were both well attended by enthusiastic PSC members and friends. There was approximately a combined total of 50 attendees. It was a gratifying showing given the current pandemic inhibitions. Thank you to all who participated.



Gallery hours: By appointment: Wednesday, Friday, Saturday, Sunday: 1 PM to 5 PM

December 2021

## Main Gallery Schedule

### 1st Members Gala Invitational Juried Exhibition

#### Awards



**1<sup>st</sup> Prize: Waiting - Joseph Cashore**



**2<sup>nd</sup> Prize: Corn, Snow, Barn - John R.C. Dorchester**



**3<sup>rd</sup> Prize: Parable of Richard III - Garth Herrick**

## Main Gallery Schedule

### 1st Members Gala Invitational Juried Exhibition

#### Honorable Mention



Laundry Day - Dan Cook



Casting Shadows - Lauren Sweeney



Ben Franklin Bridge Tower - Barry Plimpton



Yellow Squash - Larry Chestnut



Gallery hours: By appointment: Wednesday, Friday, Saturday, Sunday: 1 PM to 5 PM

December 2021

## Stewart Gallery Schedule



**Exhibition space in  
the Stewart Gallery  
is available for PSC  
Members!**

Reserve the gallery by  
contacting our  
Exhibition Coordinator:  
[exhibitions@sketchclub.org](mailto:exhibitions@sketchclub.org)

The space is \$150 for a  
month. Members can  
show once in the Stewart  
Gallery per year.

[See the Sketch Club Open Gallery](#)

[See the 2021 Exhibition Schedule](#)

[Important Dates for all PSC Activities](#)



## Art Natters: Members News

### Visit the Sketch Club Online Gallery

Go to the Sketch Club's on-going open gallery to see recent updates with work by PSC members and friends:

<http://sketchclub.org/sketch-club-open-gallery/>.

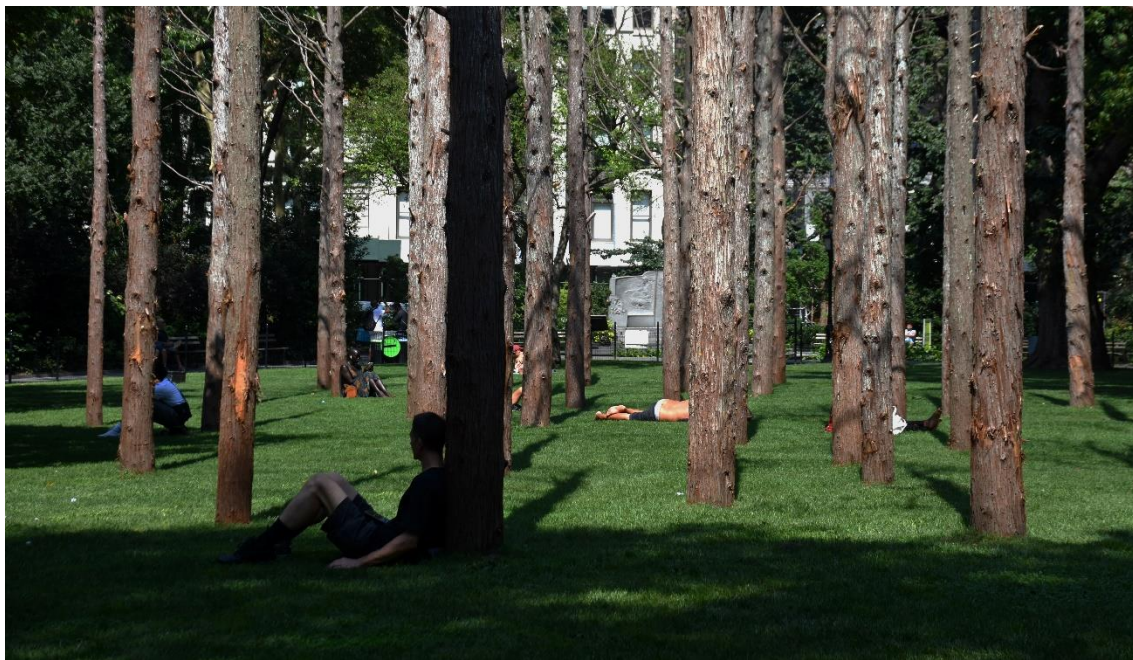
Members and friends can submit up to 4 images. Send your submissions to:

[portfolio@sketchclub.org](mailto:portfolio@sketchclub.org).

Include for your work: Your name; Title; size; and medium.

For photos of yourself, include Who you are and a brief description of the image.


Photographer and Sketch Club member, **Melvin Chappell** is participating in an invitational exhibition at the City Arts Salon. The event is a multi-medium group show to celebrate the tenth anniversary of the opening of the City Arts Salon. The location of the event is 155 Cecil B. Moore Ave. The show will close on December 12, 2021. Chappell has a photo in the exhibition titled, "Bonding With Trees".



**Bonding with Trees**


## Art Natters: Members News

Sketch Club member Annette Alessi




**Art Studio News**  
ANNETTE ALESSI FINE ART LLC  
ALESSICREATIONS.COM


**Annette Alessi exhibits at Barbara Moore Fine Art Gallery Christmas in Miniature Show**



*"Hummingbird", watercolor and oil, 8 x 8, See more beach and ocean scenes by clicking on image.*



*"White Dove", Watercolor and oil, 8 x 8, Special quotes on each piece can be better seen in person at the show.*



*"Cardinal", Watercolor and Oil, 8 x 8, This one is in honor of Paul Scarborough.*

**5th Annual "Christmas in Miniature Art Exhibit**  
**Opening Reception on December 1st from 1pm-7:30 pm.**  
**Barbara Moore Fine Art Gallery, 1609 Baltimore Pike Bldg. 400A**  
**Chadds Ford, PA 19317, 484-776-5174**

Gallery Hours: Wed-Sat 10 -4; Sunday 12 -4

**Show runs until December 31st, 2021**  
 Art will also be shown on the [gallery's website](https://alessicreations.com/) starting December 1st.

Visit Annette's web site: <https://alessicreations.com/>



Gallery hours: By appointment: Wednesday, Friday, Saturday, Sunday: 1 PM to 5 PM

December 2021

Sketch Club member **Pat Wilson-Schmid** is having a one person art show this coming January through March at the Mennonite Heritage Center, 565 Yoder Road, Harleysville PA, 19438 215-256-3020

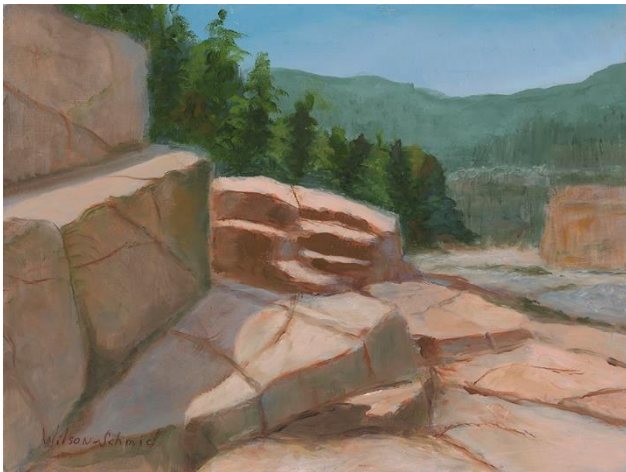
There will be a “soft opening” (whatever that is) and I will let you know the date when they give it to me.

Also I have work running continually at “Off The Wall” Framing &Gallery at 4059 Skippack Pike, Skippack, PA 19474 – Phone: 610-222-2289

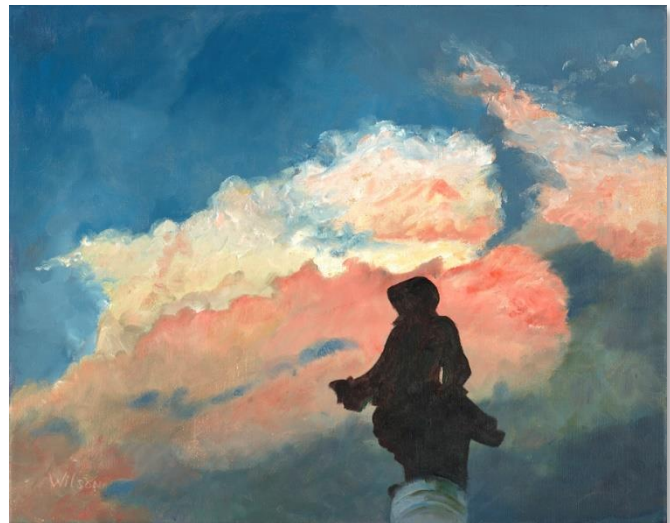
Email me if you need to: [palettepat@gmail.com](mailto:palettepat@gmail.com)



**Celebration**



**Stepping Stones**



**Penn Emerges**

Gallery hours: By appointment: Wednesday, Friday, Saturday, Sunday: 1 PM to 5 PM

December 2021

## Art Natters: Members News

### Deborah Riccardi: Hicks Art Center Gallery

#### Faculty Exhibition

Bucks County Community College

Sept. 9<sup>th</sup> -Dec. 6, 2021

275 Swamp Road, Newtown, PA 18940

Gallery hours:

Monday-Friday 9 a.m. to 4 p.m.

Free admission call 215-968-8425 for more information



Figure 3 Deborah Riccardi, Play, Guatemala,  
digital photography 8" x 12" x 1"



Deborah Riccardi, Tree of Life Series, Just  
Another Day, oil on canvas 36" x 24" x 2"



Deborah Riccardi, Tree of Life Series,  
Roots



## Sketch Club Open Workshop Schedule

*Welcome Back!*

Sketchclub.org • (215) 545-9298 • 235 S Camac St, Philadelphia, PA 19107

*Workshops*

### Fees

\$9 Model Workshop sessions, \$8 for members

\$6 for full time students

Model Tips are optional but appreciated

\*\*\*Bring your drawing and painting materials!\*\*\*



*Life Model*

Monday	6:30 pm - 9:30 pm Extended pose	Monitor: Emily Hirtle
Tuesday	12:00 pm - 3:00 pm Extended pose	Monitor: Jacqueline Barnett
Wednesday	6:30 pm - 9:30 pm Extended pose	Monitor: Valerie Lang
Saturday	9:00am - 12:30pm Extended pose	Monitor: Jacqueline Barnett

*Costumed Model*

Thursday	12:00pm-3:00pm Extended pose	Monitor: Bob Bohne
----------	---------------------------------	--------------------

Tables, chairs, and easels provided. Please bring your own supplies  
Vaccination required for entry

### Coming in 2022!

We are planning to add a Friday evening still life workshop to the schedule. Sketch Club member **Tom Kohlmann** will monitor.

Watch for emails or visit <https://sketchclub.org> for more details on the still life workshop and holiday cancellations.

The Sketch Club offers in person workshops in compliance with CDC guidelines.

All workshops are open to the public. There is no need to register before attending. You do NOT have to be a member of the Philadelphia Sketch Club to participate in the workshops. Our workshops are open to anyone who is interested in drawing, painting, or printmaking. All skill levels are welcome.

Please Note: Those who use oil paints should bring their own container(s) to remove used solvents. Odorless solvents only. See more important attendee information at: [Workshop Attendee Responsibilities](#)

Thank you to all the PSC members who donate their time and expertise to make these workshops available to PSC members and the Philadelphia art community.



## Opportunities/Notices

As a courtesy to our non-PSC-member friends, in support of the Philadelphia artist community, we publish your notices, etc., free of charge. However, contributions to the PSC are always welcome. And, we will gladly consider your application for membership

[Contribute to the Sketch Club Here](#)   [Apply for PSC Membership Here](#)

## Membership

### Stay in touch with current Sketch Club Members

Don't let sheltering in place prevent you from staying in touch with your Sketch Club friends and colleagues. Sketch Club members can access contact information for all current members. Go to the members only page at: <http://sketchclub.org/members-only-2/>. After you log-in with the password sent to you in your acceptance email you can click on the Membership Directory link to access members contact information. Non-Sketch Club friends can find a listing of current members along with their websites if they have one at: <http://sketchclub.org/sample-page/current-members-contact-list/>:

### Recent New Sketch club Members

- Emily Hirtle
- John Stevens

For a complete listing of Sketch Club members, go to:

<http://sketchclub.org/sample-page/current-members-contact-list/>

### Not a PSC Member?: Join Now!

If you're reading this edition of the Portfolio and you're not a member of the PSC, you should consider joining the more than 200 other Philadelphia area artists who have. The PSC is one of the most active visual art venues serving center city Philadelphia. The PSC is a hands-on organization that offers its members the opportunity to participate in all aspects of creating and presenting work to the public. It presents over 20 scheduled group and solo exhibitions annually and offers a wide range of daily workshops. [Get info and an application here.](#)

If you are a member of the PSC, please feel free to share the Portfolio with your artist friends and encourage them to become members.

### Membership Renewal

You can check the status of your membership by going to the Current Members page on the PSC web-site: <http://sketchclub.org/sample-page/memberspace/>. All current members are listed. An asterisk (\*) means that the membership has expired but is within the 60-day grace period for renewal. Names in red are active links to the individual's web site.

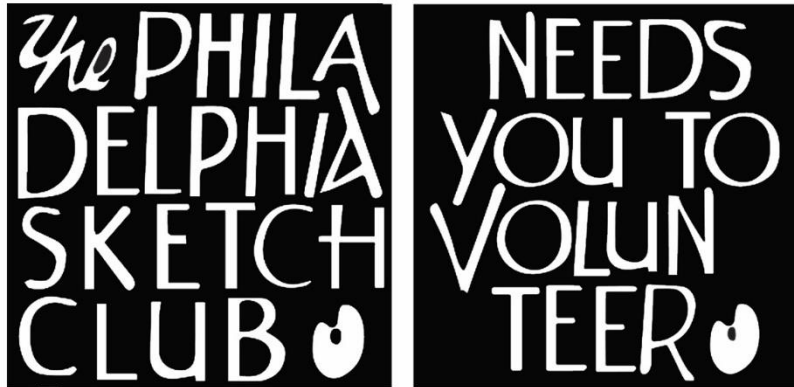
Renew Now! <http://sketchclub.org/annual-dues-payment/>

If you have any questions about your membership, please don't hesitate to contact us at [membership@sketchclub.org](mailto:membership@sketchclub.org) or call the office: 215-545-9298.

## Volunteer

### Be an Active Sketch Club Member; Volunteer!!

The Philadelphia Sketch Club is managed entirely by volunteers except for the gallery manager, housekeeping, and bookkeeper.



The PSC always needs volunteer members. Volunteering is one of the most important aspects of being a Sketch Club member and it is the one of the best ways to take advantage of the PSC. You'll be working with colleagues who share the same interests and helping the PSC provide unique services to the visual arts community. Sign up for an activity today.

Here are some of the activities that volunteers perform:

- Chair exhibitions
- Assist in hanging exhibitions
- Covering exhibition drop-offs and pick-ups
- Monitor workshops
- Assist with presentations
- Serve on the Board of Directors
- Serve as Key Circle volunteers
- Publish the Portfolio
- Manage the PSC web site
- Gallery coverage
- Graphics for Portfolio, PSC web site, social media
- Assist in every aspect of managing the club and providing member services

To get involved, contact us at: [info@sketchclub.org](mailto:info@sketchclub.org)



## Support the Sketch Club

### Contribute

Please consider making your tax-deductible contribution now. These funds will be put to good use providing enhanced services to our members and friends.

Membership dues cover only a small portion of the PSC's operating expenses. Competition for funding for arts organizations like the Sketch Club is increasingly competitive and total funding for the arts is shrinking. Your additional support will keep the PSC an active support for visual artists in the Metropolitan Philadelphia area. The Philadelphia Sketch Club is an IRS designated 501(c) (3) non-profit organization.

You can call the office at 215-545-9298, mail checks to the Sketch Club or visit the Contribute page of our Website.

Visit our **Contribute** page of our website to give online at:

<http://sketchclub.org/support-us/>

You can also support the PSC on an ongoing basis when you shop on Amazon. Go to:

<http://smile.amazon.com/> and enter the Philadelphia Sketch Club in the Pick your own charitable organization box.

Your support makes it possible for the PSC to continue providing ongoing daily workshops and numerous annual gallery exhibitions.

### Like, Link & Share

If you're not following the Philadelphia Sketch Club on Facebook re-tweeting Sketch Club tweets yet, it's time that you did. We have well over 2000 Facebook followers. Get the word out about the Sketch Club. Please click the like button and share your comments and invite your friends to like our page.

Follow @PhilaSketchClub on Twitter, we have almost 400 followers. Please click the heart button and re-tweet our announcements.

Include links on your website, blogs and social media to The Philadelphia Sketch Club to increase traction across social media platforms.

Follow us on Facebook, Twitter and Instagram now!



## Member Classifieds



**Your Ad Here... Have something to sell? Looking for something?**  
Contact [portfolio@sketchclub](mailto:portfolio@sketchclub) to arrange for posting.



Gallery hours: By appointment: Wednesday, Friday, Saturday, Sunday: 1 PM to 5 PM

December 2021

The Portfolio: The newsletter of the Philadelphia Sketch Club is published monthly. Editor, technical support, and webmaster: Ken Weiner. Send your member news, announcements and corrections to [portfolio@sketchclub.org](mailto:portfolio@sketchclub.org). The due date for all materials is one week before the end of the month.

Back issues of the Portfolio are available at: <http://sketchclub.org/portfolio-archive/>

Thanks to PSC member volunteer **Ken Weiner** for his ongoing support of Sketch Club technology and communications functions.

#### **The Philadelphia Sketch Club**

235 S Camac Street  
Philadelphia, PA 19107  
(215) 545-9298  
<http://sketchclub.org/>  
[gallerymanager@sketchclub.org](mailto:gallerymanager@sketchclub.org)  
[info@sketchclub.org](mailto:info@sketchclub.org)

Gallery Manager: Kaylie Minzola

#### **Officers:**

- President: Richard Harrington
- Vice President: Kenneth Weiner
- Secretary: Elise Anzini
- Treasurer: William Patterson

#### **Board of Directors**

- Jacqueline Barnett
- Renard Edwards
- Stephen Iwanczuk
- Edward Pluciennik
- Charles F. Tarr
- Gail Williams