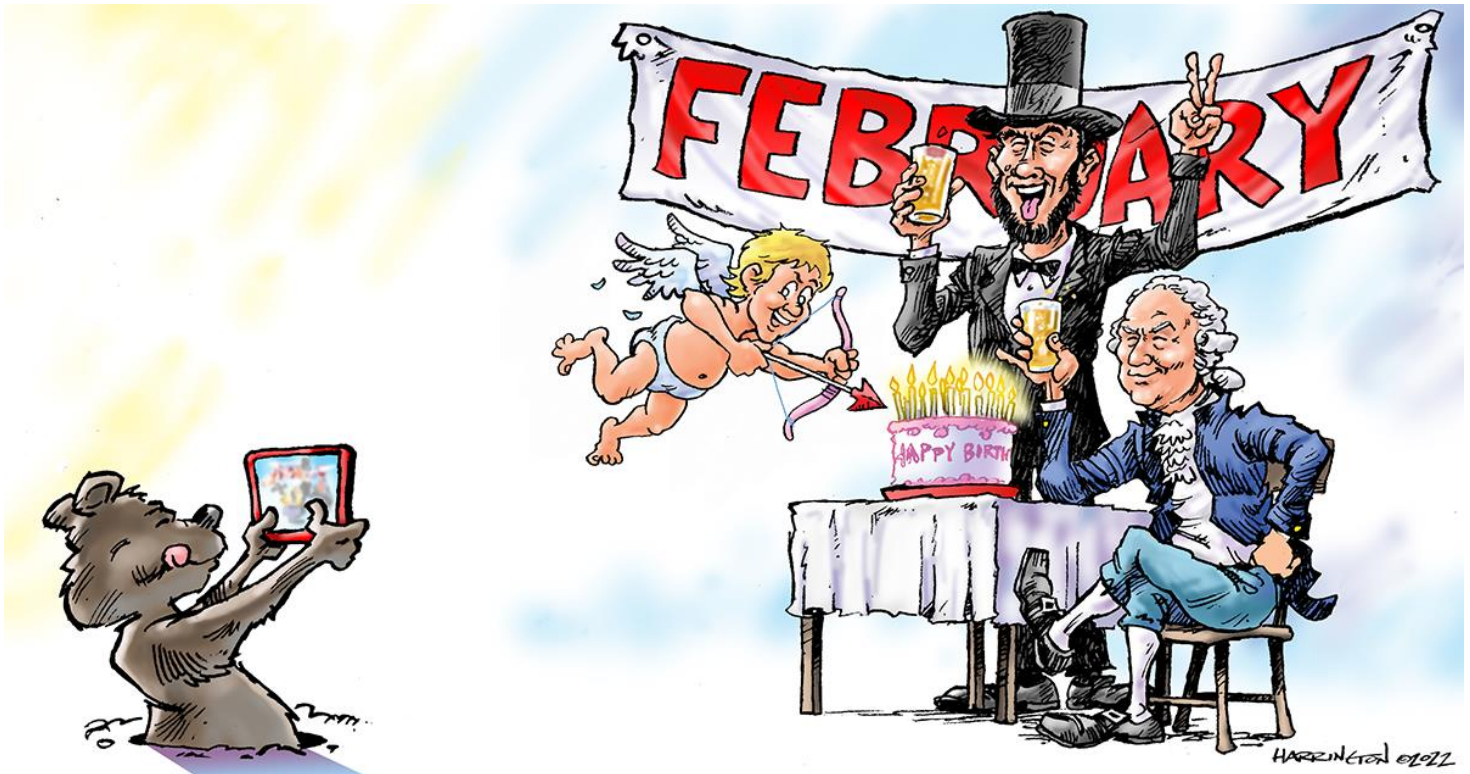


Gallery hours: By appointment: Wednesday, Friday, Saturday, Sunday: 1 PM to 5 PM

February 2022



Rich Harrington

This Month's Portfolio

Sketch Club Special Events	2
Sketch Club Critique Group	5
Main Gallery Schedule	7
Stewart Gallery Schedule	9
Sketch Club Open Workshop Schedule	12
Opportunities/Notices	13
Membership	13
Volunteer	14
Support the Sketch Club	15
Member Classifieds	15

Send your member news, announcements, and corrections to:
portfolio@sketchclub.org. The deadline for ALL submissions is
1-week before the end of the month.

Reminder: It's never too late. You can always renew your membership

You may pay online at <http://sketchclub.org/annual-dues-payment/> or mail your check to:

The Philadelphia Sketch Club

235 S. Camac St.

Philadelphia, PA 19107

For questions please contact the Gallery Manager at
215-545-9298 or email:

gallerymanager@sketchclub.org

Late Breaking News – See items that were submitted
after the publication date. Go to:

<http://sketchclub.org/late-breaking-news/>

The PSC general email is: info@sketchclub

Sketch Club Special Events

Opening Events Consistant with CDC guidelines

Welcome Back!

Sketchclub.org • (215) 545-9298 • 235 S Camac St, Philadelphia, PA 19107

Workshops

Fees

\$10 Model Workshop sessions, \$9 for members

\$6 for full time students

Model Tips are optional but appreciated

Bring your drawing and painting materials!



Life Model

Monday	6:30 pm - 9:30 pm Extended pose	Monitor: Emily Hirtle
Tuesday	12:00 pm - 3:00 pm Extended pose	Monitor: Jacqueline Barnett
Wednesday	6:30 pm - 9:30 pm Extended pose	Monitor: Valerie Lang
Saturday	9:30am- 12:30pm Extended pose	Monitor: Jacqueline Barnett

Costumed Model

Thursday	12:00pm-3:00pm Extended pose	Monitor: Bob Bohne
----------	---------------------------------	--------------------

Tables, chairs, and easels provided. Please bring your own supplies
Vaccination required for entry

Coming in 2022!

We are planning to add a Friday evening still life workshop to the schedule. Sketch Club member **Tom Kohlmann** will monitor.

Watch for emails or visit <https://sketchclub.org> for more details on the still life workshop and holiday cancellations.

The Sketch Club offers in person workshops in compliance with CDC guidelines.

Sketch Club Special Events

Workshop Attendee Responsibilities

During this period of returning to normal, we must remember to observe that some may choose be wearing masks and to respect a 6 foot distance.

Fees will be collected after the second pose. \$9 for non-members, \$8 for members, \$6 for full time students.

When setting up, please give space for others behind or in front of you. Make sure those in back can see the model.

Please observe the easel arrangement in the storage closet and replace your easel in the same manner.

Please make every effort to wipe down your easel when leaving and make sure around your easel is clear of charcoal or pastel dust.

Please put back your easel if leaving early. Use the 10-minute rest to clean up.

Please to not use turpentine for oils.

Please do all aerosol spraying outdoors, front or back yard.

If there is a change in the models pose, please inform the monitor instead of the model.

There will be two snacks available each week. The person who brought them will take these home, only coffee and tea will remain in the cabinet.

Please try to come in early to find an optimal spot to work in, and also not to cause as much disturbance during workshop time.

Anyone who needs a locker or has fees for a locker should talk to Chuck Tarr, usually here on Tuesdays, or contact the office at 215-545-9298.

Thank you for your efforts to make workshops as efficient and rewarding as possible!

Sketch Club Special Events

Sketch Club On-Line Gallery: **Always Room for More Work!**

There's always room for more work: Submit Now!

The Sketch Club is hosting an on-going open gallery at: <http://sketchclub.org/sketch-club-open-gallery/>. This gallery is open to PSC members and non-members.

Submit up to 4 images of your work or of yourself working along with a very brief description to: portfolio@sketchclub.org.

Include for your work: Your name; Title; size; and medium.

For photos of yourself include: who you are and a brief description of the image.

On-Line Resources

- The Sketch Club Critique Group: <https://www.facebook.com/groups/PSCCritique>
- The Sketch Club Open Gallery: <https://sketchclub.org/sketch-club-open-gallery/>
- The Sketch Club's web site: sketchclub.org
- Our Facebook page: <https://www.facebook.com/thesketchclub/>
- Instagram: <https://www.instagram.com/philadelphiasketch/>
- Twitter: <https://twitter.com/PhilaSketchClub>
- Members: Stay in touch with other PSC colleagues. For contact information, go to the members only page at: <http://sketchclub.org/members-only-2/>. See Stay in touch with current Sketch Club Members in the members section below for instructions.

Non-Sketch Club friends can find a listing of current members names and business websites if they have one at:

<http://sketchclub.org/sample-page/current-members-contact-list/>.

Support the Sketch Club through Amazon Smile

Make free donations to the Sketch Club anytime you shop at Amazon Smile. Remember that anyone who purchases through Amazon can have Amazon make a contribution to the Club for most every purchase you make. Just log in and go to: smile.amazon.com -From there you can select the Philadelphia Sketch Club as your non-profit charity . Done. Then the Club receives a percentage of most every purchase you make. It is a painless way to contribute to the Club's welfare. Most purchases made on your mobile app and from Whole Foods qualify too! Go to smile.amazon.com/about/ to learn more.

Sketch Club Critique Group

The Sketch Club Critique FaceBook Group

Join the Critique Facebook Group

Join your Club colleagues online at the "Philadelphia Sketch Club Critique"-- a Private group for Active PSC members only on Facebook.



Colleagues, please join in and contribute to your online art community. We all miss the camaraderie we enjoy at the Club house. The "Philadelphia Sketch Club Critique" is a chance to get together online until we can gather once more around the punch bowl and raise a toast, "to the Sketch Club, past, present and future."

Here's how it works:

- Active members go to the new "Philadelphia Sketch Club Critique" page and request access, which is available to all Club members in good standing.
- Once in post your work and watch as other members' post their artwork for critique.
- More details will be posted within the group including the option to be considered for a monthly "Highlights", a curated online gallery to be published on our external site/Instagram/Twitter channels.

This Facebook Group is private; this means that as Members submit their work others are invited to critique each other in a professional and respectful way.

Critique Group Links:

- You can find a link on the Sketch Club website: <https://sketchclub.org/>
- The Critique Group's Facebook Page: <https://www.facebook.com/groups/PSCCritique>
- The PSC's main FaceBook page: <https://www.facebook.com/thesketchclub>

Tax Info for Artists

Sketch Club members might be interested in this summary article with 2022 tax information for freelancers.

-- Submitted by Don Gauger

<https://blog.freelancersunion.org/2022/01/11/whats-new-for-freelancers-in-tax-year-2022/>

Sketch Club Critique Group

Curator's Pick – Don Gauger

The Philadelphia Sketch Club has a rich history of creating one-of-a-kind books containing original art and essays by members.

One such book is on perpetual exhibit in the Stewart Gallery. At least one such book contained essays written by members of the William Penn Club (a Camac club for published authors). I think that unique volume was had a handmade cover. Perhaps someone like Bill Patterson will write an essay on the history of these rare volumes.

With these PSC books in mind, I found two articles on the antique practice of creating hand-marbled edge and end papers.

The first article is a good overview. The second is very detailed and might be of interest to those who create monoprints or folks who work with paper collages. -- Submitted by Don Gauger

Marbled Papers: A Brief History of an Endangered Bookcraft – UCD LIBRARY CULTURAL HERITAGE COLLECTIONS (ucdculturalheritagecollections.com):

<https://ucdculturalheritagecollections.com/2021/02/18/marbled-papers-a-brief-history-of-an-endangered-bookcraft/>

Woolnough, C. W. (1881) The Whole Art of Marbling as Applied to Paper, Book Edges

Read online for free at: The whole art of marbling as applied to paper, bookedges, etc.: containing a full description of the nature and properties of the materials used, the method of preparing them, and of executing every kind of marbling in use at the present time, with numerous illustrations and examples :

Woolnough, C. W. (Charles W.) : Free Download, Borrow, and Streaming : Internet Archive:

<https://archive.org/details/wholeartofmarbli00wool>

Gallery hours: By appointment: Wednesday, Friday, Saturday, Sunday: 1 PM to 5 PM

February 2022

Main Gallery Schedule

[See the Sketch Club Open Gallery](#)

[See the 2021 Exhibition Schedule](#)

[Important Dates for all PSC Activities](#)

38th Annual 2022 School District of Philadelphia HS Art Show

Collaborating with the Philadelphia Sketch Club
(This will be held in the Main gallery of the Club this year. {not virtual})

2022 HIGH SCHOOL ART SHOW

DATES: February 1 - 27, 2022

RECEPTION,

AWARDS:

Sunday, February 27, 2022, 2:00-3:30 PM

TAKE DOWN:

Sunday, February 27, 2022, 3:30- 5:00 PM

JUDGING FOR AWARDS:

Wednesday, Feb.9,2022— 10AM-5PM

JUDGE:

Janis Pinkston, Artist and Retired Art Teacher,
School District of Philadelphia



Madeline Ashenfelter, Central HS: "Frustration", Sculpture, Horsting Award, 2021 HS Art Show, (all Virtual), Art Teacher, Heather Durkee

Main Gallery Schedule

38th Annual 2022 School District of Philadelphia HS Art Show

Hello Members,

Once again it is time to start planning for the High School Art Show (2022). As usual, we will be asking our loyal generous members for tax deductible contributions for awards for the young artists' artwork. This year, because of Covid restrictions on the amount of people in the Gallery at once, each donor will be permitted only one (\$25) award or at the most two awards.

This is because- the more prizes that are awarded more people must come to receive them, which makes too many people in the gallery at once. If we award only two to each teacher that is much better to manage during this time of limited amount in gatherings. If not enough are received more will be requested. If too many are received the extra can go for operating expenses. Please make your check out to the "Philadelphia Sketch Club", with a note in the lower left corner, "HS Art Show Award", and mail or bring it to the PSC office, Kaylie Minzola, Gallery Manager. Her hours are Wed., and Fri. 11:00-5:00PM. Also, notify the amount of your award (s) to Dorothy Roschen, in person, by Phone (215 848 3257), or email (droschen@me.com) . . Every donor is recognized on a posted complete awards list in the gallery, which is also in the catalogue. (Award amounts are not posted.)

THE CUT-OFF DATE FOR DONATING AWARDS IS Monday, FEBRUARY 2, 2022.

The judge must have a full list of awards before judging.

Please mail \$25 award checks to Kaylie Minzola, Philadelphia Sketch Club, 235 S.

Camac St. Philadelphia, PA 19107.

Madeline Muth, Program Coordinator, School District of Philadelphia sent the "Call to Entry " material to 81 HS Art Teachers. Usually, about 25-30 teachers respond and they bring and hang 5 labeled pieces each from their classrooms.

Food donations for the reception (Feb. 27) will be asked for closer to that date.

The student work is not for sale, because they need the work for other exhibits and their portfolios to get into art colleges and universities.

Thank you, Members, for your wonderful support for this show. It would be absolutely impossible without you.

Sincerely,

Dorothy Roschen, Chair, 2022 HS Art Show, (215 848 3257), droschen@me.com,

Jacqueline Barnett, PSC Board member

Kaylie Minzola, PSC Gallery Manager

Madeline Muth, Program Coordinator, School District of Philadelphia.

Gallery hours: By appointment: Wednesday, Friday, Saturday, Sunday: 1 PM to 5 PM

February 2022

Stewart Gallery Schedule



**Exhibition space in
the Stewart Gallery
is available for PSC
Members!**

Reserve the gallery by
contacting our
Exhibition Coordinator:
exhibitions@sketchclub.org

The space is \$150 for a
month. Members can
show once in the Stewart
Gallery per year.

[See the Sketch Club Open Gallery](#)

[See the 2021 Exhibition Schedule](#)

[Important Dates for all PSC Activities](#)

Art Natters: Members News

Visit the Sketch Club Online Gallery

Go to the Sketch Club's on-going open gallery to see recent updates with work by PSC members and friends:

<http://sketchclub.org/sketch-club-open-gallery/>.

Members and friends can submit up to 4 images. Send your submissions to:

portfolio@sketchclub.org.

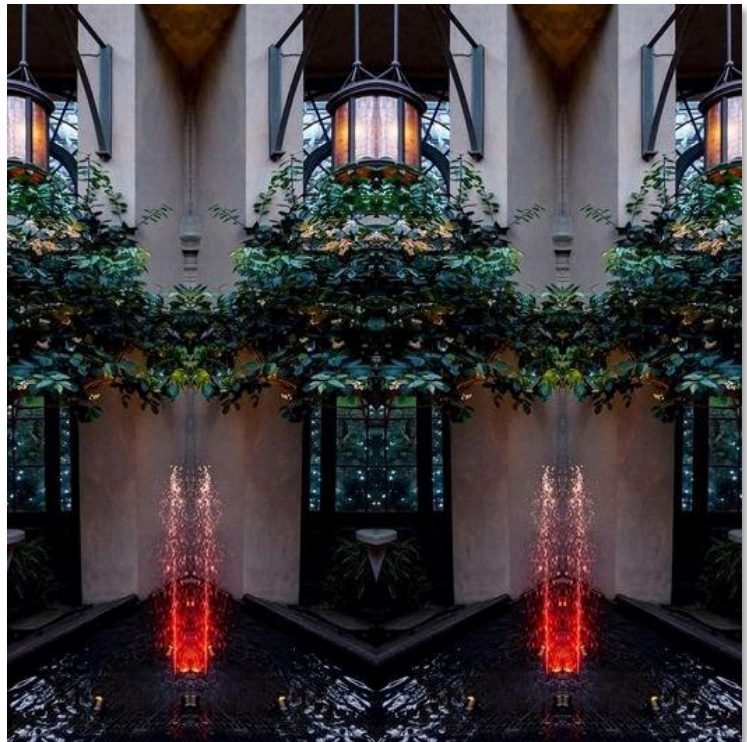
Include for your work: Your name; Title; size; and medium.

For photos of yourself, include Who you are and a brief description of the image.

From Sketch Club member and Critique Group Monitor **Don Gauger**

This is a reminder that Sketch Club members are sharing and critiquing their artwork online at the Club's Facebook "Philadelphia Sketch Club Critique Group"

The Critique group includes discussion on workflow too. There currently is a series of images and comments explaining how to create a folded-mirror image like the "Red Fountains"



Red Fountain - Digitally manipulated photograph by Don Gauger

Gallery hours: By appointment: Wednesday, Friday, Saturday, Sunday: 1 PM to 5 PM

February 2022

Art Natters: Members News

Sketch Club member **Pat Wilson-Schmid** is having a one person art show this coming January through March at the Mennonite Heritage Center, 565 Yoder Road, Harleysville PA, 19438 215-256-3020

Pat will be giving a talk there about my work on March 5 at 10 AM

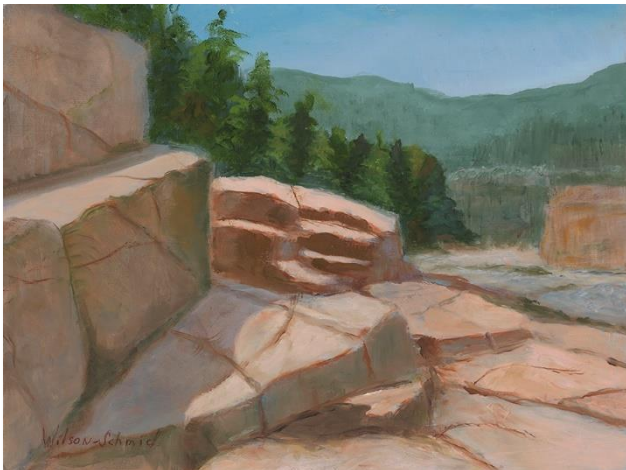
So far, I have sold 15 paintings. Fifty more remain.

Also I have work running continually at "Off The Wall" Framing &Gallery at 4059 Skippack Pike, Skippack, PA 19474 – Phone: 610-222-2289

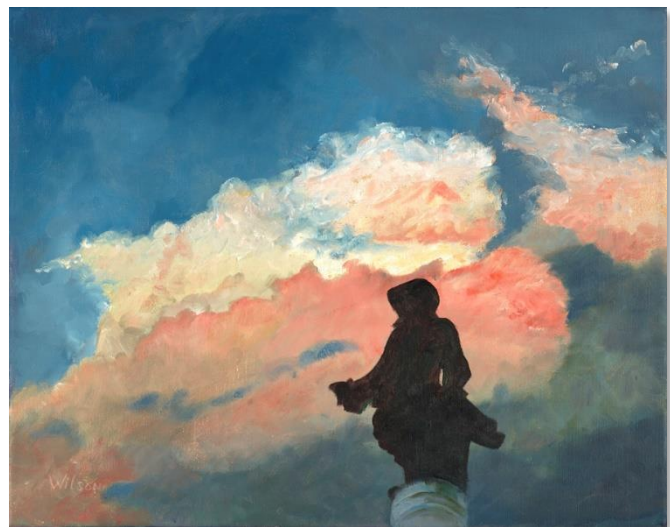
Email me if you need to: palettepat@gmail.com



Celebration



Stepping Stones



Penn Emerges

Sketch Club Open Workshop Schedule

Welcome Back!

Sketchclub.org • (215) 545-9298 • 235 S Camac St, Philadelphia, PA 19107

Workshops

Fees

\$10 Model Workshop sessions, \$9 for members
\$6 for full time students

Model Tips are optional but appreciated

Bring your drawing and painting materials!



Life Model

Monday	6:30 pm - 9:30 pm Extended pose	Monitor: Emily Hirtle
Tuesday	12:00 pm - 3:00 pm Extended pose	Monitor: Jacqueline Barnett
Wednesday	6:30 pm - 9:30 pm Extended pose	Monitor: Valerie Lang
Saturday	9:30am- 12:30pm Extended pose	Monitor: Jacqueline Barnett

Costumed Model

Thursday	12:00pm-3:00pm Extended pose	Monitor: Bob Bohne
----------	---------------------------------	--------------------

Tables, chairs, and easels provided. Please bring your own supplies
Vaccination required for entry

Coming in 2022!

We are planning to add a Friday evening still life workshop to the schedule. Sketch Club member **Tom Kohlmann** will monitor.

Watch for emails or visit
<https://sketchclub.org> for more details
on the still life workshop and holiday cancellations.

The Sketch Club offers in person workshops in compliance with CDC guidelines.

All workshops are open to the public.

There is no need to register before attending. You do NOT have to be a member of the Philadelphia Sketch Club to participate in the workshops. Our workshops are open to anyone who is interested in drawing, painting, or printmaking. All skill levels are welcome.

Please Note: Those who use oil paints should bring their own container(s) to remove used solvents. Odorless solvents only. See more important attendee information at: [Workshop Attendee Responsibilities](#)

Thank you to all the PSC members who donate their time and expertise to make these workshops available to PSC members and the Philadelphia art community.

Opportunities/Notices

As a courtesy to our non-PSC-member friends, in support of the Philadelphia artist community, we publish your notices, etc., free of charge. However, contributions to the PSC are always welcome. And, we will gladly consider your application for membership

[Contribute to the Sketch Club Here](#) [Apply for PSC Membership Here](#)

Membership

Stay in touch with current Sketch Club Members

Don't let sheltering in place prevent you from staying in touch with your Sketch Club friends and colleagues. Sketch Club members can access contact information for all current members. Go to the members only page at: <http://sketchclub.org/members-only-2/>. After you log-in with the password sent to you in your acceptance email you can click on the Membership Directory link to access members contact information. Non-Sketch Club friends can find a listing of current members along with their websites if they have one at: <http://sketchclub.org/sample-page/current-members-contact-list/>:

Not a PSC Member?: Join Now!

If you're reading this edition of the Portfolio and you're not a member of the PSC, you should consider joining the more than 200 other Philadelphia area artists who have. The PSC is one of the most active visual art venues serving center city Philadelphia. The PSC is a hands-on organization that offers its members the opportunity to participate in all aspects of creating and presenting work to the public. It presents over 20 scheduled group and solo exhibitions annually and offers a wide range of daily workshops. [Get info and an application here.](#)

If you are a member of the PSC, please feel free to share the Portfolio with your artist friends and encourage them to become members.

Membership Renewal

You can check the status of your membership by going to the Current Members page on the PSC web-site: <http://sketchclub.org/sample-page/memberspace/>. All current members are listed. An asterisk (*) means that the membership has expired but is within the 60-day grace period for renewal. Names in red are active links to the individual's web site.

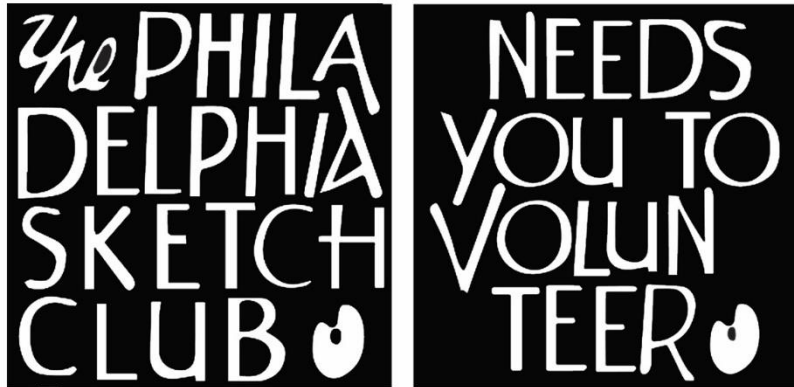
Renew Now! <http://sketchclub.org/annual-dues-payment/>

If you have any questions about your membership, please don't hesitate to contact us at membership@sketchclub.org or call the office: 215-545-9298.

Volunteer

Be an Active Sketch Club Member; Volunteer!!

The Philadelphia Sketch Club is managed entirely by volunteers except for the gallery manager, housekeeping, and bookkeeper.



The PSC always needs volunteer members. Volunteering is one of the most important aspects of being a Sketch Club member and it is the one of the best ways to take advantage of the PSC. You'll be working with colleagues who share the same interests and helping the PSC provide unique services to the visual arts community. Sign up for an activity today.

Here are some of the activities that volunteers perform:

- Chair exhibitions
- Assist in hanging exhibitions
- Covering exhibition drop-offs and pick-ups
- Monitor workshops
- Assist with presentations
- Serve on the Board of Directors
- Serve as Key Circle volunteers
- Publish the Portfolio
- Manage the PSC web site
- Gallery coverage
- Graphics for Portfolio, PSC web site, social media
- Assist in every aspect of managing the club and providing member services

To get involved, contact us at: info@sketchclub.org

Support the Sketch Club

Contribute

Please consider making your tax-deductible contribution now. These funds will be put to good use providing enhanced services to our members and friends.

Membership dues cover only a small portion of the PSC's operating expenses. Competition for funding for arts organizations like the Sketch Club is increasingly competitive and total funding for the arts is shrinking. Your additional support will keep the PSC an active support for visual artists in the Metropolitan Philadelphia area. The Philadelphia Sketch Club is an IRS designated 501(c) (3) non-profit organization.

You can call the office at 215-545-9298, mail checks to the Sketch Club or visit the Contribute page of our Website.

Visit our **Contribute** page of our website to give online at:

<http://sketchclub.org/support-us/>

You can also support the PSC on an ongoing basis when you shop on Amazon. Go to:

<http://smile.amazon.com/> and enter the Philadelphia Sketch Club in the Pick your own charitable organization box.

Your support makes it possible for the PSC to continue providing ongoing daily workshops and numerous annual gallery exhibitions.

Like, Link & Share

If you're not following the Philadelphia Sketch Club on Facebook re-tweeting Sketch Club tweets yet, it's time that you did. We have well over 2000 Facebook followers. Get the word out about the Sketch Club. Please click the like button and share your comments and invite your friends to like our page.

Follow @PhilaSketchClub on Twitter, we have almost 400 followers. Please click the heart button and re-tweet our announcements.

Include links on your website, blogs and social media to The Philadelphia Sketch Club to increase traction across social media platforms.

Follow us on Facebook, Twitter and Instagram now!



Member Classifieds



Your Ad Here... Have something to sell? Looking for something?
Contact portfolio@sketchclub to arrange for posting.



Gallery hours: By appointment: Wednesday, Friday, Saturday, Sunday: 1 PM to 5 PM

February 2022

The Portfolio: The newsletter of the Philadelphia Sketch Club is published monthly. Editor, technical support, and webmaster: Ken Weiner. Send your member news, announcements and corrections to portfolio@sketchclub.org. The due date for all materials is one week before the end of the month.

Back issues of the Portfolio are available at: <http://sketchclub.org/portfolio-archive/>

Thanks to PSC member volunteer **Ken Weiner** for his ongoing support of Sketch Club technology and communications functions.

The Philadelphia Sketch Club

235 S Camac Street
Philadelphia, PA 19107
(215) 545-9298
<http://sketchclub.org/>
gallerymanager@sketchclub.org
info@sketchclub.org

Gallery Manager: Kaylie Minzola

Officers:

- President: Richard Harrington
- Vice President: Kenneth Weiner
- Secretary: Elise Anzini
- Treasurer: William Patterson

Board of Directors

- Jacqueline Barnett
- Renard Edwards
- Stephen Iwanczuk
- Edward Pluciennik
- Charles F. Tarr
- Gail Williams