

Gallery hours: By appointment: Wednesday, Friday, Saturday, Sunday: 1 PM to 5 PM

April 2022



Laurel Grady

This Month's Portfolio

Sketch Club Special Events	2
Sketch Club Critique Group	5
Main Gallery Schedule	7
Stewart Gallery Schedule	9
Sketch Club Open Workshop Schedule	14
Opportunities/Notices	15
Membership	23
Volunteer	24
Support the Sketch Club	25
Member Classifieds	25

Send your member news, announcements, and corrections to:
portfolio@sketchclub.org. The deadline for ALL submissions is
1-week before the end of the month.

Reminder: It's never too late. You can always renew
your membership

You may pay online at <http://sketchclub.org/annual-dues-payment/> or mail your check to:

The Philadelphia Sketch Club
235 S. Camac St.
Philadelphia, PA 19107

For questions please contact the Gallery Manager at
215-545-9298 or email:

gallerymanager@sketchclub.org

Late Breaking News – See items that were submitted
after the publication date. Go to:

<http://sketchclub.org/late-breaking-news/>

The PSC general email is: [info@sketchclub](mailto:info@sketchclub.org)

Sketch Club Special Events

Opening Events Consistant with CDC guidelines

Welcome Back!

Sketchclub.org • (215) 545-9298 • 235 S Camac St, Philadelphia, PA 19107

Workshops

Fees

\$10 Model Workshop sessions, \$9 for members

\$6 for full time students

Model Tips are optional but appreciated

Bring your drawing and painting materials!



Life Model

Monday	6:30 pm - 9:30 pm Extended pose	Monitor: Emily Hirtle
Tuesday	12:00 pm - 3:00 pm Extended pose	Monitor: Jacqueline Barnett
Wednesday	6:30 pm - 9:30 pm Extended pose	Monitor: Valerie Lang
Saturday	9:30am- 12:30pm Extended pose	Monitor: Jacqueline Barnett

Costumed Model

Thursday	12:00pm-3:00pm Extended pose	Monitor: Bob Bohne
----------	---------------------------------	--------------------

Tables, chairs, and easels provided. Please bring your own supplies
Vaccination required for entry

Coming in 2022!

We are planning to add a Friday evening still life workshop to the schedule. Sketch Club member **Tom Kohlmann** will monitor.

Watch for emails or visit <https://sketchclub.org> for more details on the still life workshop and holiday cancellations.

The Sketch Club offers in person workshops in compliance with CDC guidelines.

Sketch Club Special Events

Workshop Attendee Responsibilities

During this period of returning to normal, we must remember to observe that some may choose be wearing masks and to respect a 6 foot distance.

Fees will be collected after the second pose. \$9 for non-members, \$8 for members, \$6 for full time students.

When setting up, please give space for others behind or in front of you. Make sure those in back can see the model.

Please observe the easel arrangement in the storage closet and replace your easel in the same manner.

Please make every effort to wipe down your easel when leaving and make sure around your easel is clear of charcoal or pastel dust.

Please put back your easel if leaving early. Use the 10-minute rest to clean up.

Please to not use turpentine for oils.

Please do all aerosol spraying outdoors, front or back yard.

If there is a change in the models pose, please inform the monitor instead of the model.

There will be two snacks available each week. The person who brought them will take these home, only coffee and tea will remain in the cabinet.

Please try to come in early to find an optimal spot to work in, and also not to cause as much disturbance during workshop time.

Anyone who needs a locker or has fees for a locker should talk to Chuck Tarr, usually here on Tuesdays, or contact the office at 215-545-9298.

Thank you for your efforts to make workshops as efficient and rewarding as possible!

Sketch Club Special Events

Sketch Club On-Line Gallery: **Always Room for More Work!**

There's always room for more work: Submit Now!

The Sketch Club is hosting an on-going open gallery at: <http://sketchclub.org/sketch-club-open-gallery/>. This gallery is open to PSC members and non-members.

Submit up to 4 images of your work or of yourself working along with a very brief description to: portfolio@sketchclub.org.

Include for your work: Your name; Title; size; and medium.

For photos of yourself include: who you are and a brief description of the image.

On-Line Resources

- The Sketch Club Critique Group: <https://www.facebook.com/groups/PSCCritique>
- The Sketch Club Open Gallery: <https://sketchclub.org/sketch-club-open-gallery/>
- The Sketch Club's web site: sketchclub.org
- Our Facebook page: <https://www.facebook.com/thesketchclub/>
- Instagram: <https://www.instagram.com/philadelphiasketch/>
- Twitter: <https://twitter.com/PhilaSketchClub>
- Members: Stay in touch with other PSC colleagues. For contact information, go to the members only page at: <http://sketchclub.org/members-only-2/>. See Stay in touch with current Sketch Club Members in the members section below for instructions.

Non-Sketch Club friends can find a listing of current members names and business websites if they have one at:

<http://sketchclub.org/sample-page/current-members-contact-list/>.

Support the Sketch Club through Amazon Smile

Make free donations to the Sketch Club anytime you shop at Amazon Smile. Remember that anyone who purchases through Amazon can have Amazon make a contribution to the Club for most every purchase you make. Just log in and go to: smile.amazon.com -From there you can select the Philadelphia Sketch Club as your non-profit charity . Done. Then the Club receives a percentage of most every purchase you make. It is a painless way to contribute to the Club's welfare. Most purchases made on your mobile app and from Whole Foods qualify too! Go to smile.amazon.com/about/ to learn more.

Sketch Club Critique Group

The Sketch Club Critique FaceBook Group

Join the Critique Facebook Group

Join your Club colleagues online at the "Philadelphia Sketch Club Critique"-- a Private group for Active PSC members only on Facebook.



Colleagues, please join in and contribute to your online art community. We all miss the camaraderie we enjoy at the Club house. The "Philadelphia Sketch Club Critique" is a chance to get together online until we can gather once more around the punch bowl and raise a toast, "to the Sketch Club, past, present and future."

Here's how it works:

- Active members go to the new "Philadelphia Sketch Club Critique" page and request access, which is available to all Club members in good standing.
- Once in post your work and watch as other members' post their artwork for critique.
- More details will be posted within the group including the option to be considered for a monthly "Highlights", a curated online gallery to be published on our external site/Instagram/Twitter channels.

This Facebook Group is private; this means that as Members submit their work others are invited to critique each other in a professional and respectful way.

Critique Group Links:

- You can find a link on the Sketch Club website: <https://sketchclub.org/>
- The Critique Group's Facebook Page: <https://www.facebook.com/groups/PSCCritique>
- The PSC's main FaceBook page: <https://www.facebook.com/thesketchclub>

Tax Info for Artists

Sketch Club members might be interested in this summary article with 2022 tax information for freelancers.

-- Submitted by Don Gauger

<https://blog.freelancersunion.org/2022/01/11/whats-new-for-freelancers-in-tax-year-2022/>

Sketch Club Critique Group

Curator's Pick – Don Gauger

The Philadelphia Sketch Club has a rich history of creating one-of-a-kind books containing original art and essays by members.

One such book is on perpetual exhibit in the Stewart Gallery. At least one such book contained essays written by members of the William Penn Club (a Camac club for published authors). I think that unique volume was had a handmade cover. Perhaps someone like Bill Patterson will write an essay on the history of these rare volumes.

With these PSC books in mind, I found two articles on the antique practice of creating hand-marbled edge and end papers.

The first article is a good overview. The second is very detailed and might be of interest to those who create monoprints or folks who work with paper collages. -- Submitted by Don Gauger

Marbled Papers: A Brief History of an Endangered Bookcraft – UCD LIBRARY CULTURAL HERITAGE COLLECTIONS (ucdculturalheritagecollections.com):

<https://ucdculturalheritagecollections.com/2021/02/18/marbled-papers-a-brief-history-of-an-endangered-bookcraft/>

Woolnough, C. W. (1881) The Whole Art of Marbling as Applied to Paper, Book Edges

Read online for free at: The whole art of marbling as applied to paper, bookedges, etc.: containing a full description of the nature and properties of the materials used, the method of preparing them, and of executing every kind of marbling in use at the present time, with numerous illustrations and examples :

Woolnough, C. W. (Charles W.) : Free Download, Borrow, and Streaming : Internet Archive:

<https://archive.org/details/wholeartofmarbli00wool>

Main Gallery Schedule

[See the Sketch Club Open Gallery](#)

[See the 2021 Exhibition Schedule](#)

[Important Dates for all PSC Activities](#)

Visit our On-line Galleries

With this month's issue, we mark a

- **Sketch Club Open Gallery:**
<https://sketchclub.org/sketch-club-open-gallery/>
- **38th Annual High School Art Show:**
<https://sketchclub.org/38th-annual-high-school-art-show/>
- **1st Members Gala Invitational Juried Exhibition:**
<https://sketchclub.org/1st-members-gala-invitational-juried-exhibition/>

Main Gallery Schedule

158th Annual Exhibition of Small Oil Paintings – **Call for Work!**

**The 158th Exhibition of Small Oils
at the Philadelphia Sketch Club
May 9th through May 28th, 2022**



Call for Entries

Entry deadline April 20th 2022

Visit www.sketchclub.org
for exhibition prospectus



Plan to submit work to this Annual Philadelphia Sketch Club open juried show: '**158th Annual Exhibition of Small Oil Paintings**'. It is one of the longest running and most prestigious juried exhibitions in the area. The exhibition is open to all artists, and will be on view in our historic main gallery in Center City, Philadelphia. Cash prizes and PSC medals will be awarded.

Submissions online from
April 4 through April 20.

The exhibition will be presented in the Sketch Club's Upstairs Gallery!

Prospectus and online submission details will be available soon at:

<https://sketchclub.org/158th-annual-exhibition-of-small-oil-paintings/>

Gallery hours: By appointment: Wednesday, Friday, Saturday, Sunday: 1 PM to 5 PM

April 2022

Stewart Gallery Schedule



Exhibition space in the Stewart Gallery is available for PSC Members!

Reserve the gallery by contacting our Exhibition Coordinator:
exhibitions@sketchclub.org

The space is \$150 for a month. Members can show once in the Stewart Gallery per year.

[See the Sketch Club Open Gallery](#)

[See the 2021 Exhibition Schedule](#)

[Important Dates for all PSC Activities](#)

Art Natters: Members News

Visit the Sketch Club Online Gallery

Go to the Sketch Club's on-going open gallery to see recent updates with work by PSC members and friends:

<http://sketchclub.org/sketch-club-open-gallery/>.

Members and friends can submit up to 4 images. Send your submissions to:

portfolio@sketchclub.org.

Include for your work: Your name; Title; size; and medium.

For photos of yourself, include Who you are and a brief description of the image.

Art Natters: Members News

Sketch Club board member **Jackie Barnett** crafted this door hanging in support of our Ukrainian friends.



Art Natters: Members News

Sketch Club member **Laurel Grady**

Editor's note: Laurel submitted this work for the March banner. Initially, I thought that banner cropping would severely compromise. However, I reconsidered for April. I thought that it reflects the volatile spring weather that we've been having. Here's the complete image as. What do you think?

If you'd like to submit work for the Portfolio banner, here's a link to the Portfolio specifications page where you'll find specs for all submissions:

<https://sketchclub.org/portfolio-submissions/>



14" wide x 11" deep oil on panel Swiftcurrent Creek, Montana

Art Natters: Members News

In honor of Women's History Month, Sketch Club member **Daniel Neufeld** presents the latest painting he did in gouache on a 5 by 7 inch sheet of paper. It's a close-up portrait of Stephanie, a woman who modelled for me and a number of other artists. During a workshop session on New Year's Day at the Philadelphia Sketch Club. Stephanie looked so beautiful modelling in a black and silver dress. First I drew a few sketches of her in pencils in a sketchbook of mine from direct observation at the session. Then afterwards, I thought why not do at least a couple of paintings from photographs I also took as well. This piece will soon be at the top of my painting collection on my website and on my Facebook page.



Stephanie: Gouache; 5" X 7"

Art Natters: Members News

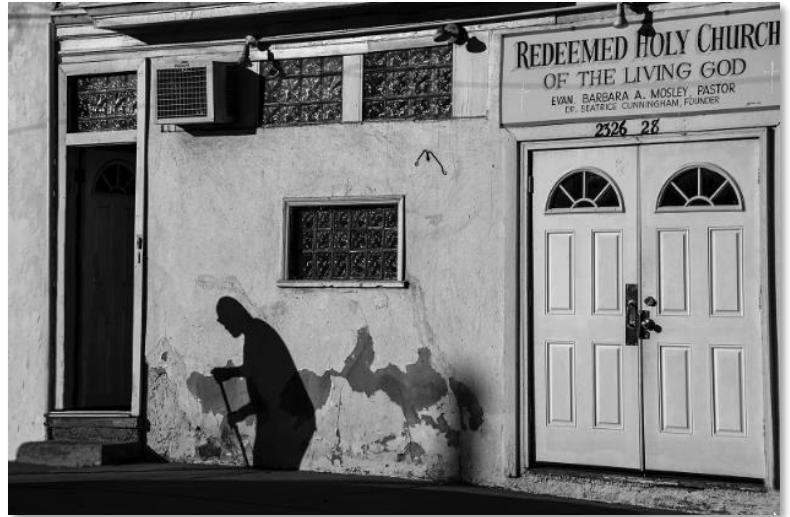
Sketch Club member **Dan Cook** published "[Vernacular Faith](#)," a photo essay on small, houses of worship and community transition in North Philadelphia in the most recent issue of [Contexts](#) magazine, a publication of the American Sociological Association.

Dan Cook

[Optic Compulsion Studio](#)

Strange days have found us
Strange days have tracked us down
They're going to destroy
Our casual joys

--The Doors



Sketch Club member **Laurel Grady's** painting *Looking through Rose Colored Bouquets* was accepted into a show at **Medford Arts Center** in Medford New Jersey.

It received the Walling Hurst award presented by the Director of the gallery.

Opening reception Friday, April 1, 2022.

2022 Art of the Flower Juried Exhibition

March 11 through April 7

<https://www.medfordarts.com/2022-art-of-the-flower-juried-exhibition.html#gallery>



**Looking through Rose Colored Bouquets: 24" X 24" -
Walling Hurst award winner**

Sketch Club Open Workshop Schedule

Welcome Back!

Sketchclub.org • (215) 545-9298 • 235 S Camac St, Philadelphia, PA 19107

Workshops

Fees

\$10 Model Workshop sessions, \$9 for members
\$6 for full time students

Model Tips are optional but appreciated

Bring your drawing and painting materials!



Life Model

Monday	6:30 pm - 9:30 pm Extended pose	Monitor: Emily Hirtle
Tuesday	12:00 pm - 3:00 pm Extended pose	Monitor: Jacqueline Barnett
Wednesday	6:30 pm - 9:30 pm Extended pose	Monitor: Valerie Lang
Saturday	9:30am- 12:30pm Extended pose	Monitor: Jacqueline Barnett

Costumed Model

Thursday	12:00pm-3:00pm Extended pose	Monitor: Bob Bohne
----------	---------------------------------	--------------------

Tables, chairs, and easels provided. Please bring your own supplies
Vaccination required for entry

Coming in 2022!

We are planning to add a Friday evening still life workshop to the schedule. Sketch Club member **Tom Kohlmann** will monitor.

Watch for emails or visit
<https://sketchclub.org> for more details
on the still life workshop and holiday cancellations.

The Sketch Club offers in person workshops in compliance with CDC guidelines.

All workshops are open to the public.

There is no need to register before attending. You do NOT have to be a member of the Philadelphia Sketch Club to participate in the workshops. Our workshops are open to anyone who is interested in drawing, painting, or printmaking. All skill levels are welcome.

Please Note: Those who use oil paints should bring their own container(s) to remove used solvents. Odorless solvents only. See more important attendee information at: [Workshop Attendee Responsibilities](#)

Thank you to all the PSC members who donate their time and expertise to make these workshops available to PSC members and the Philadelphia art community.

Opportunities/Notices

As a courtesy to our non-PSC-member friends, in support of the Philadelphia artist community, we publish your notices, etc., free of charge. However, contributions to the PSC are always welcome. And, we will gladly consider your application for membership

[Contribute to the Sketch Club Here](#) [Apply for PSC Membership Here](#)

Lieberman Gallery at Settlement Music School

Jane Mihalick - Joomchi: melded paper creations

April 18 to August 18

Settlement Music School, Germantown Branch
6128 Germantown Avenue, Philadelphia, PA 19144

Phone: 215-320-2610.

Monday - Thursday 10 -4

Saturday 10 – 4

Closed Friday & Sunday

Jean Plough - "Go Figure"

Mary Liz Memorial Masters Exhibition

March 27 - June 3, 2022

Off the Wall Gallery

AT DIRTY FRANK'S

NE corner, 13th & Pine St

Philadelphia PA

Opportunities/Notices



Please join us to celebrate the 40th anniversary of my 39th birthday

At a Birthday Brunch: Sunday, May 1, 2022; 11 AM to 2 PM

At our new apartment:

41 Conshohocken State Road #309
Bala Cynwyd, PA 19004

RSVP 6102566037 or garf621@aol.com by April 24

ABSOLUTELY NO GIFTS. In lieu of a gift, please bring cash or a check for SELF Incorporated.

SELF INC is a 501 (c) (3) human services agency that provides emergency and permanent supportive housing, housing-focused case management, mentoring, and other vital services and resources for Philadelphia's most vulnerable communities.

During this COVID-19 emergency, SELF is leading efforts with its funding partners, fellow providers, and advocates to help ensure the safety of sheltered and unsheltered Philadelphians experiencing homelessness.

Or donate online at <https://www.selfincorp.org/>

For donations of \$100 or more, you will be able to select one of my original works on paper as a thank you gift

Hope to see you,

Linda Dubin Garfield

Opportunities/Notices

From April 1 through April 29, 2022, the F.A.N. Gallery will present a one-person exhibition of works by painter **Nancy Bea Miller**. The first solo exhibition in several years of Miller's still-life and landscape paintings in oil, *Nancy Bea Miller: New Paintings* showcases the artist's thoughtful and affirming representational work, at a time when we all need a little lift.

More than forty oil paintings comprise the exhibition in sizes ranging from a few inches to a few feet. The majority of the paintings were created during the recent pandemic and are described by Miller as "the expression of ideas and feelings that have been forming in my mind for many years. Having a long period of enforced downtime meant that I finally had the time to focus more intensively on what I have been wanting to express."



Figure 1 Nancy Bea Miller, Red Onion, 2022



2 Block of Butter, 10x8 inches, oil on paper, Nancy Bea Miller

New Paintings

Representational Still Life and Landscape Paintings
Nancy Bea Miller
April 1–April 29, 2022

Opening Reception:
First Friday, April 1, from 5 to 8 pm

The show and opening reception are free and open to all.

F.A.N. Gallery
221 Arch Street
Philadelphia, PA 19106
215-922-5155

fan@thefangallery.com

Gallery Hours:
Wednesday – Sunday 12-5 pm
or by appointment

Exhibition preview can be seen online here:
<https://www.thefangallery.com/artistsxxxoldest/nancy-bea-miller/>

Artist's Instagram: @nancybeamiller_artwork

Opportunities/Notices

Spring News from New Arts Program

Betty Beaumont's OUT OF FASHION:

The Apparel Industry's Environmental Impact
Closing reception, Sunday, April 24, 11 a.m.- 3
p.m. Meet the artist!

No need to apply ahead!

CALL FOR ARTISTS!

INTERNATIONAL SALON OF SMALL WORKS

Guidelines: 200 sq. in or less (including frame), all media
ready for wall hanging, Label on back: Artist name, title,
media, size, price (NAP 15% commission), email and phone
contact.

\$5 entry. Cash/check payable to New Arts Program. ONE
entry per artist. DELIVERY in person May 5, 6, 7, 8: 11 a.m.-3
p.m. at NAP 173 W. Main St., Kutztown, Pa. 19530.

SHIPPING; (Return postage required). Delivery between May 2 - 8. New Arts Program, P.O. Box 82, 173
W. Main St., Kutztown, Pa. 19530.

EXHIBITION OPENING; FRIDAY, MAY 27 - July 17, 2022.

Reception, May 27, 6:00-9:00 p.m.



Looking Ahead!

Philip Glass! Performs his 12th Benefit Concert for the New Arts Program!

Saturday, September 24, 2022

St. John's UCC, Kutztown, PA

Concert: 7:30 p.m. Doors Open: 7:00 p.m.

General Admission: \$50. Limited Seating,

Tickets Available online NOW at www.newartsprogram.org

or mail check to NAP P.O Box 82, Kutztown, Pa. 19530.

(Tickets purchased through NAP office will be held at concert door for pick-up)

Share with your friends! Everyone is welcome!!

We especially appreciate our New Arts Program member's support. Join or renew today.

Opportunities/Notices

Annarita Gentile

With so much on my mind about the Ukraine situation I reviewed some photography work I did in the late 90's. At Fort Dix, New Jersey, 4,000 Albanian refugees from Kosovo were housed. Some 14,000 Kosovo Moslems were let into the U.S. during the Kosovo crises of 1999. After Serbian troops had been forced out by NATO, about half of those 14,000 returned to Kosovo. The other remained in the U.S.,

While these families were on the base, I had the opportunity to spend a day with them. Communication was difficult but as the hours passed, they accepted my presence.

I find these photos both painful and a comfort at this time and wanted to share them.



Boys #1



BOY, GIRL with ice cream



Everything UPSIDE DOWN



COUPLES

Opportunities/Notices

Joan Myerson Shrager

I am a digital artist. In the last few weeks, I have devoted my skills and my heart to the current tragic situation in Ukraine. As it is created on my iPad and iMac, the images here have not yet been printed. There is no size limitation.



Little Girl Blue



Another Day in the News



Babies and Sunflowers



Ukraine on my Mind

<https://www.facebook.com/groups/myfriendsinart>

<https://www.instagram.com/joanmsshrager/?hl=en>

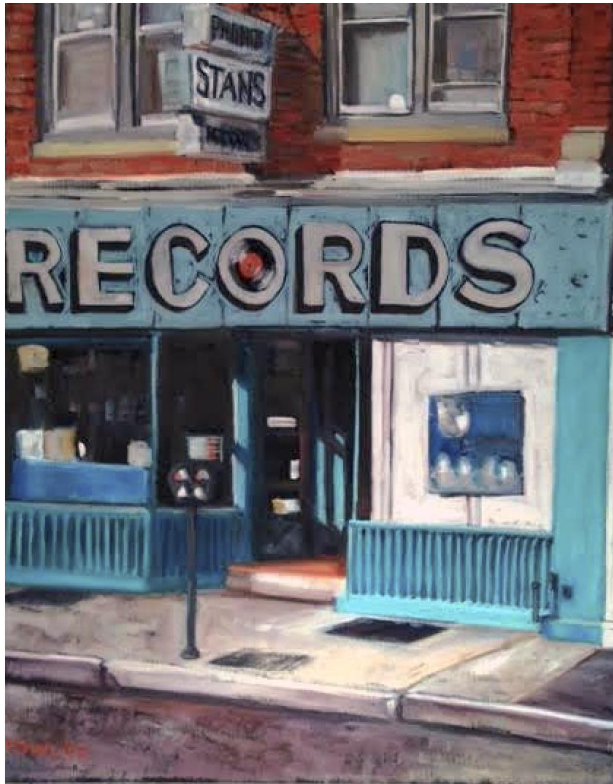
<http://joan-myersonshrager.com>

See more of Myerson's work on the Sketch Club Open Gallery at:

<https://sketchclub.org/sketch-club-open-gallery/>

Opportunities/Notices

Eric Fowler



Stan's Records



Phoenix



Baltimore 2

Opportunities/Notices

The Artsy Collectors 2022



This inaugural edition focuses on 17 individuals—

from visionary writers, artists, and musicians to distinguished entrepreneurs and devoted arts patrons—who represent the broad spectrum of collectors on Artsy.

Meet some of them at: [The Artsy Collectors](#)

Membership

Stay in touch with current Sketch Club Members

Don't let sheltering in place prevent you from staying in touch with your Sketch Club friends and colleagues. Sketch Club members can access contact information for all current members. Go to the members only page at: <http://sketchclub.org/members-only-2/>. After you log-in with the password sent to you in your acceptance email you can click on the Membership Directory link to access members contact information. Non-Sketch Club friends can find a listing of current members along with their websites if they have one at: <http://sketchclub.org/sample-page/current-members-contact-list/>:

Not a PSC Member?: Join Now!

If you're reading this edition of the Portfolio and you're not a member of the PSC, you should consider joining the more than 200 other Philadelphia area artists who have. The PSC is one of the most active visual art venues serving center city Philadelphia. The PSC is a hands-on organization that offers its members the opportunity to participate in all aspects of creating and presenting work to the public. It presents over 20 scheduled group and solo exhibitions annually and offers a wide range of daily workshops. [Get info and an application here.](#)

If you are a member of the PSC, please feel free to share the Portfolio with your artist friends and encourage them to become members.

Membership Renewal

You can check the status of your membership by going to the Current Members page on the PSC web-site: <http://sketchclub.org/sample-page/memberspace/>. All current members are listed. An asterisk (*) means that the membership has expired but is within the 60-day grace period for renewal. Names in red are active links to the individual's web site.

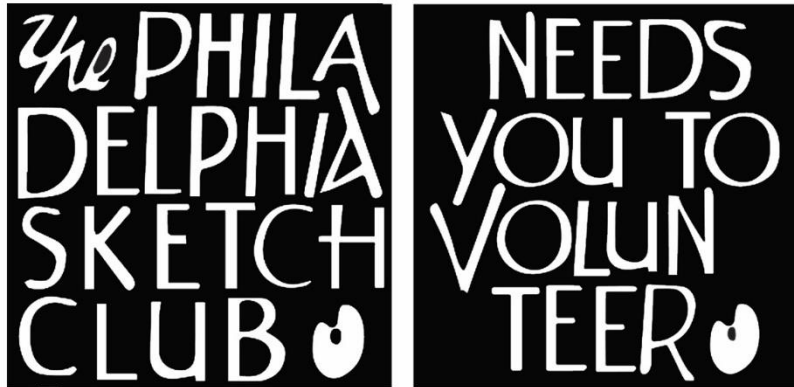
Renew Now! <http://sketchclub.org/annual-dues-payment/>

If you have any questions about your membership, please don't hesitate to contact us at membership@sketchclub.org or call the office: 215-545-9298.

Volunteer

Be an Active Sketch Club Member; Volunteer!!

The Philadelphia Sketch Club is managed entirely by volunteers except for the gallery manager, housekeeping, and bookkeeper.



The PSC always needs volunteer members. Volunteering is one of the most important aspects of being a Sketch Club member and it is the one of the best ways to take advantage of the PSC. You'll be working with colleagues who share the same interests and helping the PSC provide unique services to the visual arts community. Sign up for an activity today.

Here are some of the activities that volunteers perform:

- Chair exhibitions
- Assist in hanging exhibitions
- Covering exhibition drop-offs and pick-ups
- Monitor workshops
- Assist with presentations
- Serve on the Board of Directors
- Serve as Key Circle volunteers
- Publish the Portfolio
- Manage the PSC web site
- Gallery coverage
- Graphics for Portfolio, PSC web site, social media
- Assist in every aspect of managing the club and providing member services

To get involved, contact us at: info@sketchclub.org

Support the Sketch Club

Contribute

Please consider making your tax-deductible contribution now. These funds will be put to good use providing enhanced services to our members and friends.

Membership dues cover only a small portion of the PSC's operating expenses. Competition for funding for arts organizations like the Sketch Club is increasingly competitive and total funding for the arts is shrinking. Your additional support will keep the PSC an active support for visual artists in the Metropolitan Philadelphia area. The Philadelphia Sketch Club is an IRS designated 501(c) (3) non-profit organization.

You can call the office at 215-545-9298, mail checks to the Sketch Club or visit the Contribute page of our Website.

Visit our **Contribute** page of our website to give online at:

<http://sketchclub.org/support-us/>

You can also support the PSC on an ongoing basis when you shop on Amazon. Go to:

<http://smile.amazon.com/> and enter the Philadelphia Sketch Club in the Pick your own charitable organization box.

Your support makes it possible for the PSC to continue providing ongoing daily workshops and numerous annual gallery exhibitions.

Like, Link & Share

If you're not following the Philadelphia Sketch Club on Facebook re-tweeting Sketch Club tweets yet, it's time that you did. We have well over 2000 Facebook followers. Get the word out about the Sketch Club. Please click the like button and share your comments and invite your friends to like our page.

Follow @PhilaSketchClub on Twitter, we have almost 400 followers. Please click the heart button and re-tweet our announcements.

Include links on your website, blogs and social media to The Philadelphia Sketch Club to increase traction across social media platforms.

Follow us on Facebook, Twitter and Instagram now!



Member Classifieds



Your Ad Here... Have something to sell? Looking for something?
Contact portfolio@sketchclub to arrange for posting.



Gallery hours: By appointment: Wednesday, Friday, Saturday, Sunday: 1 PM to 5 PM

April 2022

The Portfolio: The newsletter of the Philadelphia Sketch Club is published monthly. Editor, technical support, and webmaster: Ken Weiner. Send your member news, announcements and corrections to portfolio@sketchclub.org. The due date for all materials is one week before the end of the month.

Back issues of the Portfolio are available at: <http://sketchclub.org/portfolio-archive/>

Thanks to PSC member volunteer **Ken Weiner** for his ongoing support of Sketch Club technology and communications functions.

The Philadelphia Sketch Club

235 S Camac Street
Philadelphia, PA 19107
(215) 545-9298
<http://sketchclub.org/>
gallerymanager@sketchclub.org
info@sketchclub.org

Gallery Manager: Kaylie Minzola

Officers:

- President: Richard Harrington
- Vice President: Kenneth Weiner
- Secretary: Elise Anzini
- Treasurer: William Patterson

Board of Directors

- Jacqueline Barnett
- Renard Edwards
- Stephen Iwanczuk
- Edward Pluciennik
- Charles F. Tarr
- Gail Williams