

Gallery hours: By appointment: Wednesday, Friday, Saturday, Sunday: 1 PM to 5 PM

May 2022

MAY 2022



Rich Harrington

This Month's Portfolio

Sketch Club Special Events	2
Sketch Club Critique Group	7
Main Gallery Schedule	9
Stewart Gallery Schedule	10
Sketch Club Open Workshop Schedule	14
Opportunities/Notices	15
Membership	23
Volunteer	24
Support the Sketch Club	25
Member Classifieds	25

Send your member news, announcements, and corrections to: portfolio@sketchclub.org. The deadline for ALL submissions is 1-week before the end of the month.

Reminder: It's never too late. You can always renew your membership

You may pay online at <http://sketchclub.org/annual-dues-payment/> or mail your check to:

The Philadelphia Sketch Club

235 S. Camac St.

Philadelphia, PA 19107

For questions please contact the Gallery Manager at 215-545-9298 or email:

gallerymanager@sketchclub.org

Late Breaking News – See items that were submitted after the publication date. Go to:

<http://sketchclub.org/late-breaking-news/>

The PSC general email is: info@sketchclub

Gallery hours: By appointment: Wednesday, Friday, Saturday, Sunday: 1 PM to 5 PM

May 2022

Sketch Club Special Events

Spring Sale!



Art and Art related books

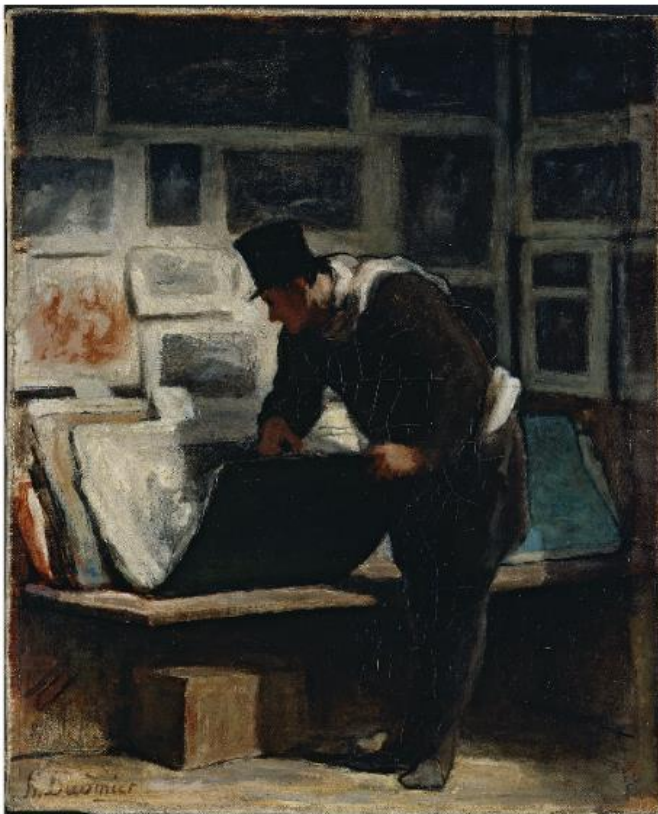
Friday May 13th, and Saturday 14th, 3-5

The Philadelphia Sketch Club

235 S. Camac Street, Philadelphia, PA

Art book donations contact:

Gallerymanager@sketchclub.org



For more information, please contact our Gallery Manager, Kaylie Minzola at:

gallerymanager@sketchclub.org

Sketch Club Special Events

WORKSHOP MONITOR WANTED

Wednesday Nights, 6:30-9:30pm

Volunteer Position

email: Gallerymanager@sketchclub.org

the PHILA
DELPHIA
SKETCH
CLUB



Stand in the shoes
of our former class instructors
such as Thomas Eakins!

For more information, please contact our Gallery Manager, Kaylie Minzola at:

gallerymanager@sketchclub.org

Sketch Club Special Events

Opening Events Consistant with CDC guidelines

Welcome Back!

Sketchclub.org • (215) 545-9298 • 235 S Camac St, Philadelphia, PA 19107

Workshops

Fees

\$10 Model Workshop sessions, \$9 for members

\$6 for full time students

Model Tips are optional but appreciated

Bring your drawing and painting materials!



Life Model

Monday	6:30 pm - 9:30 pm Extended pose	Monitor: Emily Hirtle
Tuesday	12:00 pm - 3:00 pm Extended pose	Monitor: Jacqueline Barnett
Wednesday	6:30 pm - 9:30 pm Extended pose	Monitor: Valerie Lang
Saturday	9:30am- 12:30pm Extended pose	Monitor: Jacqueline Barnett

Costumed Model

Thursday	12:00pm-3:00pm Extended pose	Monitor: Bob Bohne
----------	---------------------------------	--------------------

Tables, chairs, and easels provided. Please bring your own supplies
Vaccination required for entry

Coming in 2022!

We are planning to add a Friday evening still life workshop to the schedule. Sketch Club member **Tom Kohlmann** will monitor.

Watch for emails or visit <https://sketchclub.org> for more details on the still life workshop and holiday cancellations.

The Sketch Club offers in person workshops in compliance with CDC guidelines.

Sketch Club Special Events

Workshop Attendee Responsibilities

During this period of returning to normal, we must remember to observe that some may choose be wearing masks and to respect a 6 foot distance.

Fees will be collected after the second pose. \$9 for non-members, \$8 for members, \$6 for full time students.

When setting up, please give space for others behind or in front of you. Make sure those in back can see the model.

Please observe the easel arrangement in the storage closet and replace your easel in the same manner.

Please make every effort to wipe down your easel when leaving and make sure around your easel is clear of charcoal or pastel dust.

Please put back your easel if leaving early. Use the 10-minute rest to clean up.

Please to not use turpentine for oils.

Please do all aerosol spraying outdoors, front or back yard.

If there is a change in the models pose, please inform the monitor instead of the model.

There will be two snacks available each week. The person who brought them will take these home, only coffee and tea will remain in the cabinet.

Please try to come in early to find an optimal spot to work in, and also not to cause as much disturbance during workshop time.

Anyone who needs a locker or has fees for a locker should talk to Chuck Tarr, usually here on Tuesdays, or contact the office at 215-545-9298.

Thank you for your efforts to make workshops as efficient and rewarding as possible!

Sketch Club Special Events

Sketch Club On-Line Gallery: **Always Room for More Work!**

There's always room for more work: Submit Now!

The Sketch Club is hosting an on-going open gallery at: <http://sketchclub.org/sketch-club-open-gallery/>. This gallery is open to PSC members and non-members.

Submit up to 4 images of your work or of yourself working along with a very brief description to: portfolio@sketchclub.org.

Include for your work: Your name; Title; size; and medium.

For photos of yourself include: who you are and a brief description of the image.

On-Line Resources

- The Sketch Club Critique Group: <https://www.facebook.com/groups/PSCCritique>
- The Sketch Club Open Gallery: <https://sketchclub.org/sketch-club-open-gallery/>
- The Sketch Club's web site: sketchclub.org
- Our Facebook page: <https://www.facebook.com/thesketchclub/>
- Instagram: <https://www.instagram.com/philadelphiasketch/>
- Twitter: <https://twitter.com/PhilaSketchClub>
- Members: Stay in touch with other PSC colleagues. For contact information, go to the members only page at: <http://sketchclub.org/members-only-2/>. See Stay in touch with current Sketch Club Members in the members section below for instructions.

Non-Sketch Club friends can find a listing of current members names and business websites if they have one at:

<http://sketchclub.org/sample-page/current-members-contact-list/>.

Support the Sketch Club through Amazon Smile

Make free donations to the Sketch Club anytime you shop at Amazon Smile. Remember that anyone who purchases through Amazon can have Amazon make a contribution to the Club for most every purchase you make. Just log in and go to: smile.amazon.com -From there you can select the Philadelphia Sketch Club as your non-profit charity . Done. Then the Club receives a percentage of most every purchase you make. It is a painless way to contribute to the Club's welfare. Most purchases made on your mobile app and from Whole Foods qualify too! Go to smile.amazon.com/about/ to learn more.

Sketch Club Critique Group

The Sketch Club Critique FaceBook Group

Join the Critique Facebook Group

Join your Club colleagues online at the "Philadelphia Sketch Club Critique"-- a Private group for Active PSC members only on Facebook.



Colleagues, please join in and contribute to your online art community. We all miss the camaraderie we enjoy at the Club house. The "Philadelphia Sketch Club Critique" is a chance to get together online until we can gather once more around the punch bowl and raise a toast, "to the Sketch Club, past, present and future."

Here's how it works:

- Active members go to the new "Philadelphia Sketch Club Critique" page and request access, which is available to all Club members in good standing.
- Once in post your work and watch as other members' post their artwork for critique.
- More details will be posted within the group including the option to be considered for a monthly "Highlights", a curated online gallery to be published on our external site/Instagram/Twitter channels.

This Facebook Group is private; this means that as Members submit their work others are invited to critique each other in a professional and respectful way.

Critique Group Links:

- You can find a link on the Sketch Club website: <https://sketchclub.org/>
- The Critique Group's Facebook Page: <https://www.facebook.com/groups/PSCCritique>
- The PSC's main FaceBook page: <https://www.facebook.com/thesketchclub>

Tax Info for Artists

Sketch Club members might be interested in this summary article with 2022 tax information for freelancers.

-- Submitted by Don Gauger

<https://blog.freelancersunion.org/2022/01/11/whats-new-for-freelancers-in-tax-year-2022/>

Sketch Club Critique Group

Curator's Pick – Don Gauger

Art News from the Internet, collected by Don Gauger.

Still confused about NFTs? This article does a nice job of explaining the technology and the market. It will be interesting to see if this is a "pet rock" moment, or if the technology will remain an avenue for artists to use in reaching audiences and markets. Note that a year ago that the "art" category was 3/10 top NFTs.

"Why NFTs are suddenly selling for millions of dollars" (news source: thehustle.co)

<https://thehustle.co/why-nfts-are-suddenly-selling-for-millions-of-dollars/>

"The craziest art project in internet history" (news source: thehustle.co)

The premise is simple: simultaneously give everyone on the internet access to the same white canvas on which each user can color a single pixel every 5 minutes.

"Individually you can create something, but together you can create something more," reads a description for r/place, the April Fools' Day social experiment Reddit first ran in 2017.

That year, 1m+ redditors placed ~16m tiles. Chaotic, a sh*t show, some may even call it, but beautifully mesmerizing all the same.

Last week, they did it again. And wow.

Engagement on the project was, well, high. Over 4 days:

- 10.4m+ people placed a tile
- 160m+ tiles were placed
- 4B minutes were spent in the group

People from 236 countries and territories participated, with the US, Turkey, and France having the most users placing tiles.

How did it work?

As you can imagine, give millions of people the creative freedom to paint a canvas and some interesting things will happen.

Strategies developed. Rival factions formed. Territorial battles were won and lost. Check out this recap to see how things unfolded.

<https://www.tiktok.com/@coopersmithreal/video/7083630370930887942?>

One notable event: The so-called Spanish-French War of r/place, which saw a Spanish streamer promise fans of K-pop boy band BTS that he would help the "Butter" music video hit 1B views if they helped him overrun the French flag.

Other interesting tidbits included Canada's struggle to maintain its maple leaf, a Rembrandt, and hidden "Among Us" figures.

What happens now?

Reddit concluded the project by restricting everyone to white tiles, effectively having users erase the canvas. Afterward, a timelapse of the canvas was released, and the community built an interactive atlas detailing even the smallest features.

https://www.reddit.com/r/place/comments/txufad/the_complete_rplace_timelapse/?ref=share&

The project could well be the most collaborative artwork in history, and represents the internet's power to bridge millions of people from all corners of the web.

Of course, crazy busy art would be pointless without Waldo. Go find him.

Main Gallery Schedule

[See the Sketch Club Open Gallery](#)

[See the 2021 Exhibition Schedule](#)

[Important Dates for all PSC Activities](#)

158th Annual Exhibition of Small Oil Paintings

**The 158th Exhibition of Small Oils
at the Philadelphia Sketch Club
May 9th through May 28th, 2022**



the PHILA
DELPHIA
SKETCH
CLUB

The Sketch Club's 158th Annual Exhibition of Small Oil Paintings'. It is one of the longest running and most prestigious juried exhibitions in the area. The exhibition is open to all artists and will be on view in our historic main gallery in Center City, Philadelphia.

The exhibition will be presented in the newly renovated Sketch Club's Upstairs Gallery!

See the online gallery:

[158th Annual Exhibition of Small Oil Paintings Gallery](#)

**Reception: Sunday May 29
1:00 – 3:00 PM**

Stewart Gallery Schedule



Exhibition space in the Stewart Gallery is available for PSC Members!

Reserve the gallery by contacting our Exhibition Coordinator:
exhibitions@sketchclub.org

The space is \$150 for a month. Members can show once in the Stewart Gallery per year.

[See the Sketch Club Open Gallery](#)
[Important Dates for all PSC Activities](#)

Art Natters: Members News

Visit the Sketch Club Online Gallery

Go to the Sketch Club's on-going open gallery to see recent updates with work by PSC members and friends:

<http://sketchclub.org/sketch-club-open-gallery/>.

Members and friends can submit up to 4 images. Send your submissions to:

portfolio@sketchclub.org.

Include for your work: Your name; Title; size; and medium.

For photos of yourself, include Who you are and a brief description of the image.

Art Natters: Members News

From Sketch Club member, **Coleen Hammond**



WHERE CREATIVITY IS A
COMMUNITY TRADITION
Cheltenham Center
for the Arts
is a 501(c)(3) non-profit or-
ganization

P: 215-379-4660
info@cheltenhamarts.org

439 Ashbourne Road
Cheltenham, PA 19012



Obscured View
Pastel
2019



Change to Come
Pastel
2019



Night Vision
Gousche
2019

In-Person Critique Day

with Guest Artist

Jill A. Rupinski

Date: Sunday May 22, 2022

Time: 12:00 - 1:15pm

Pre-Registration Required

email: info@cheltenhamarts.org

Suggested Donation: \$10



Jill Rupinski is a Professor in Painting and Drawing and Interim Chairperson of the Fine Arts Department at the Pennsylvania Academy of the Fine Arts (PAFA). Jill attended PAFA, majored in painting, and received a four-year Certificate in 1977. She earned a Bachelor of Fine Arts Degree from Philadelphia College of Art in 1981. In 2014 Jill was selected to participate in the Senior Artists Initiative Oral History Project (video online). She was a 1997 recipient of the Percy Owens Memorial Award for a Distinguished Pennsylvania Artist, from the Fellowship of the Pennsylvania Academy of the Fine Arts, and a 1976 William Emlen Cresson Memorial Travel Scholarship from PAFA. Her work is in the collections of the Fellowship of the Pennsylvania Academy of the Fine Arts, Arcadia, Colgate, Villanova Universities, Pennsylvania Hospital, & the University of Pennsylvania. For the past decade Jill has participated as an instructor demonstrating her innovative techniques of Pastel painting in the Maurice River School at the Barn Studio, Millville, NJ. In 2013 & 2014 she has taught in overseas venues of Seillans, France, & the Isle of Arran, Scotland through No Boundaries Art Workshops. She is a member for the French Creek Art Colony in Pennsylvania which is a group of Plein-air painters. Jill's work is represented by Cerulean Arts Gallery and Studio in Philadelphia, PA.

Critique Day is a monthly opportunity for artists to present 1-2 pieces of their work for constructive feedback in a small group setting (Max. 5). A cross section of invited artists and art professionals will help explore varied perspectives, examine technical and emotional components, and aid in seeing more objectively. Our goal for Critique Day is to encourage artists to find their own creative voice, and to provide technical and professional guidance with all their artistic pursuits, in a sensitive and supportive manner. All mediums and all levels welcome.

Art Natters: Members News

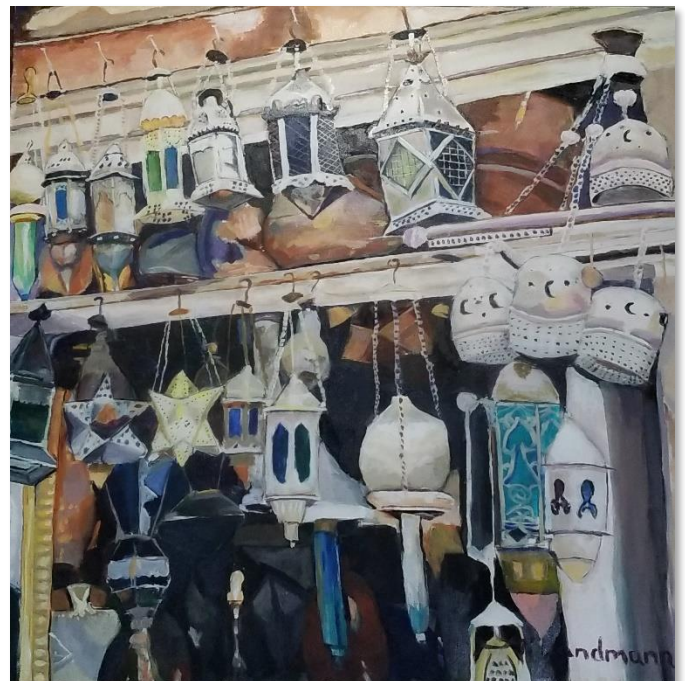
Sketch Club member **Pat Wilson-Schmid** recently sold a total of 21 paintings at the Mennonite Heritage Center in Harleysville and the Regina Marie Gallery in Skippack.

Sketch Club member **Tracey Landmann** will be exhibiting seven large canvases at Fit Personal Fitness Studio, 62 Rockford Rd., Wilmington, DE, May 3 - June 30. The paintings are viewable every day, during Fit's hours of operation. fitdelaware.com.



Minoan Vessels

My Instagram username is @expressingperceptionwithpaint. My painting portfolio is there.



The Lights Fantastic

Art Natters: Members News

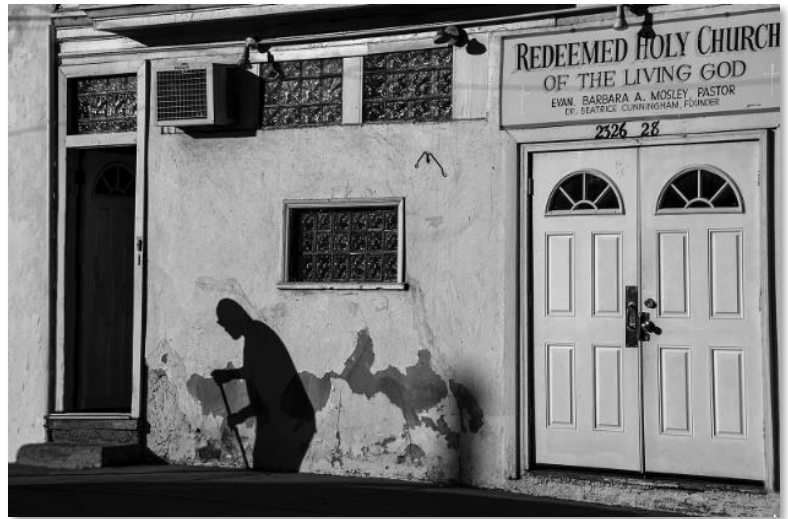
Sketch Club member **Dan Cook** published "[Vernacular Faith](#)," a photo essay on small, houses of worship and community transition in North Philadelphia in the most recent issue of [Contexts](#) magazine, a publication of the American Sociological Association.

Dan Cook

[Optic Compulsion Studio](#)

Strange days have found us
Strange days have tracked us down
They're going to destroy
Our casual joys

--The Doors



Sketch Club Open Workshop Schedule

Welcome Back!

Sketchclub.org • (215) 545-9298 • 235 S Camac St, Philadelphia, PA 19107

Workshops

Fees

\$10 Model Workshop sessions, \$9 for members
\$6 for full time students

Model Tips are optional but appreciated

Bring your drawing and painting materials!



Life Model

Monday	6:30 pm - 9:30 pm Extended pose	Monitor: Emily Hirtle
Tuesday	12:00 pm - 3:00 pm Extended pose	Monitor: Jacqueline Barnett
Wednesday	6:30 pm - 9:30 pm Extended pose	Monitor: Valerie Lang
Saturday	9:30am- 12:30pm Extended pose	Monitor: Jacqueline Barnett

Costumed Model

Thursday	12:00pm-3:00pm Extended pose	Monitor: Bob Bohne
----------	---------------------------------	--------------------

Tables, chairs, and easels provided. Please bring your own supplies
Vaccination required for entry

Coming in 2022!

We are planning to add a Friday evening still life workshop to the schedule. Sketch Club member **Tom Kohlmann** will monitor.

Watch for emails or visit
<https://sketchclub.org> for more details
on the still life workshop and holiday cancellations.

The Sketch Club offers in person workshops in compliance with CDC guidelines.

All workshops are open to the public.

There is no need to register before attending. You do NOT have to be a member of the Philadelphia Sketch Club to participate in the workshops. Our workshops are open to anyone who is interested in drawing, painting, or printmaking. All skill levels are welcome.

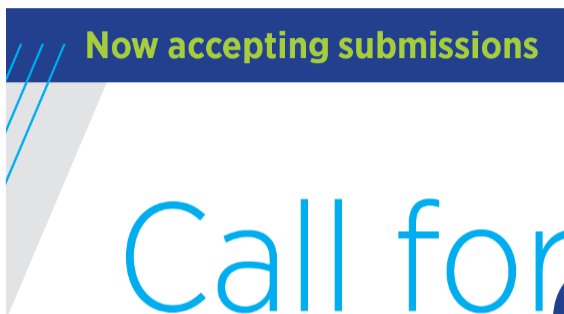
Please Note: Those who use oil paints should bring their own container(s) to remove used solvents. Odorless solvents only. See more important attendee information at: [Workshop Attendee Responsibilities](#)

Thank you to all the PSC members who donate their time and expertise to make these workshops available to PSC members and the Philadelphia art community.

Opportunities/Notices

As a courtesy to our non-PSC-member friends, in support of the Philadelphia artist community, we publish your notices, etc., free of charge. However, contributions to the PSC are always welcome. And, we will gladly consider your application for membership

[Contribute to the Sketch Club Here](#) [Apply for PSC Membership Here](#)



Call for entries

The Annual Art Ability Exhibition and Sale at Bryn Mawr Rehab Hospital is open to artists with physical, cognitive, visual and/or hearing disabilities.

Deadline for entries: Wednesday, July 6, 2022

For detailed eligibility and submission requirements, please visit the [Art Ability Call for Entries page](#). Eligible artists should submit materials in digital format through the CaFETM website at callforentry.org (search **Art Ability**).

[Learn more about submitting your work](#)

Opportunities/Notices



The Spring Arts Merchants

Association's 1st annual festival known as the, **Spring Garden Party**, will take place in the Spring Arts district in Callowhill. The Main Event will be Saturday, May14 from Noon-8pm.

At this outside, block-party style market, directly benefiting visual artists and craftspeople, dozens of artists and local organizations will activate the parking lot between Buttonwood and Hamilton Streets in the adjacent lot next to the new Love City Brewing Co. All sales will go directly to the participating vendors.

The Spring Arts Merchants Association was recently formed by a group of businesses who came together to create an organization with the mission: "To promote and

improve the overall business environment in the Spring Arts community; to attract, connect and support new business; and to stimulate a vibrant local economy while enhancing the overall quality of life to its highest potential." With 40+ vendors participating, there is something for everyone, from artwork for your home to wearable pieces.

Main Event: Saturday, May 14, noon-8pm

- Free and open to the public Market & Festival
- Beer from local breweries Love City Brewing, Roy Pitz Barrel House, Triple Bottom Brewing, and Yards Brewing.
- Food Trucks + Live Musi

[VENDOR REGISTRATION](#)

Gallery hours: By appointment: Wednesday, Friday, Saturday, Sunday: 1 PM to 5 PM

May 2022

Opportunities/Notices

Jean Plough - "Go Figure"

Mary Liz Memorial Masters Exhibition

March 27 - June 3, 2022

Off the Wall Gallery

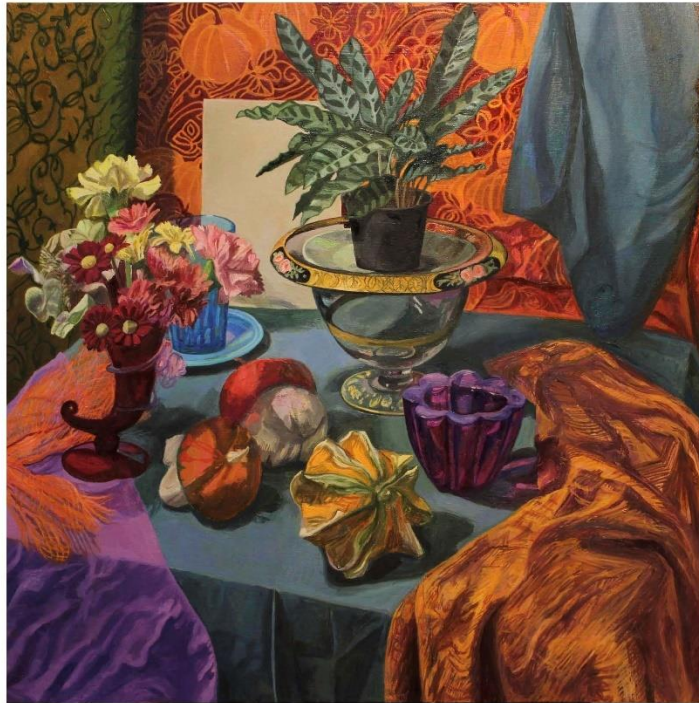
AT DIRTY FRANK'S

NE corner, 13th & Pine St

Philadelphia PA

Opportunities/Notices

CONTEMPORARY STILL LIFE CLASS AT THE CERULEAN ARTS GALLERY



TAUGHT BY ELIZABETH HELLER, PHILADELPHIA PAINTER AND SCULPTOR

FOUR WEEKS, SATURDAYS, JUNE 4- 25, 9AM - 1 PM. REGISTER by MAY 27th, 2022.

CLASS SIZE LIMITED TO SIX STUDENTS.

LEARN A STEP-BY-STEP PROCESS AS YOU WORK DIRECTLY FROM A SERIES OF
ENGAGING STILL LIFE ARRANGEMENTS AND DEVELOP YOUR OIL PAINTING SKILLS.

FOR MORE INFORMATION, MATERIALS LIST, AND CLASS SCHEDULE, HERE IS THE

LINK: <https://ceruleanarts.com/products/contemporary-still-life-painting-in-oil-with-elizabeth-heller-in-person>

ALSO SEE MORE ARTWORK BY ELIZABETH HELLER @<https://elizabethhellerart.com>

Opportunities/Notices

Annarita Gentile

With so much on my mind about the Ukraine situation I reviewed some photography work I did in the late 90's. At Fort Dix, New Jersey, 4,000 Albanian refugees from Kosovo were housed. Some 14,000 Kosovo Moslems were let into the U.S. during the Kosovo crises of 1999. After Serbian troops had been forced out by NATO, about half of those 14,000 returned to Kosovo. The other remained in the U.S.,

While these families were on the base, I had the opportunity to spend a day with them. Communication was difficult but as the hours passed, they accepted my presence.

I find these photos both painful and a comfort at this time and wanted to share them.



Boys #1



BOY, GIRL with ice cream



Everything UPSIDE DOWN



COUPLES

Opportunities/Notices

Joan Myerson Shrager

I am a digital artist. In the last few weeks, I have devoted my skills and my heart to the current tragic situation in Ukraine. As it is created on my iPad and iMac, the images here have not yet been printed. There is no size limitation.



Little Girl Blue



Another Day in the News



Babies and Sunflowers



Ukraine on my Mind

<https://www.facebook.com/groups/myfriendsinart>

<https://www.instagram.com/joanmsshrager/?hl=en>

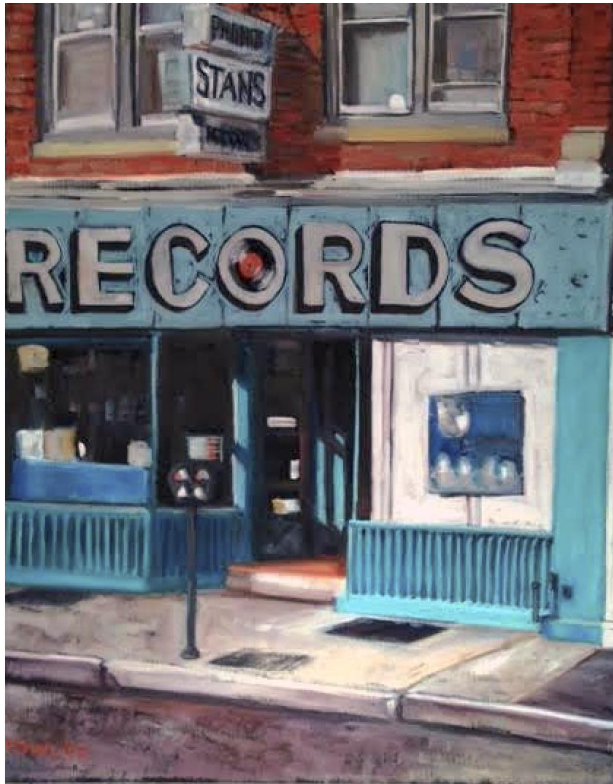
<http://joan-myersonshrager.com>

See more of Myerson's work on the Sketch Club Open Gallery at:

<https://sketchclub.org/sketch-club-open-gallery/>

Opportunities/Notices

Eric Fowler



Stan's Records



Phoenix



Baltimore 2

Opportunities/Notices

The Artsy Collectors 2022



This inaugural edition focuses on 17 individuals—

from visionary writers, artists, and musicians to distinguished entrepreneurs and devoted arts patrons—who represent the broad spectrum of collectors on Artsy.

Meet some of them at: [The Artsy Collectors](#)

Membership

Stay in touch with current Sketch Club Members

Don't let sheltering in place prevent you from staying in touch with your Sketch Club friends and colleagues. Sketch Club members can access contact information for all current members. Go to the members only page at: <http://sketchclub.org/members-only-2/>. After you log-in with the password sent to you in your acceptance email you can click on the Membership Directory link to access members contact information. Non-Sketch Club friends can find a listing of current members along with their websites if they have one at: <http://sketchclub.org/sample-page/current-members-contact-list/>:

Not a PSC Member?: Join Now!

If you're reading this edition of the Portfolio and you're not a member of the PSC, you should consider joining the more than 200 other Philadelphia area artists who have. The PSC is one of the most active visual art venues serving center city Philadelphia. The PSC is a hands-on organization that offers its members the opportunity to participate in all aspects of creating and presenting work to the public. It presents over 20 scheduled group and solo exhibitions annually and offers a wide range of daily workshops. [Get info and an application here.](#)

If you are a member of the PSC, please feel free to share the Portfolio with your artist friends and encourage them to become members.

Membership Renewal

You can check the status of your membership by going to the Current Members page on the PSC web-site: <http://sketchclub.org/sample-page/memberspace/>. All current members are listed. An asterisk (*) means that the membership has expired but is within the 60-day grace period for renewal. Names in red are active links to the individual's web site.

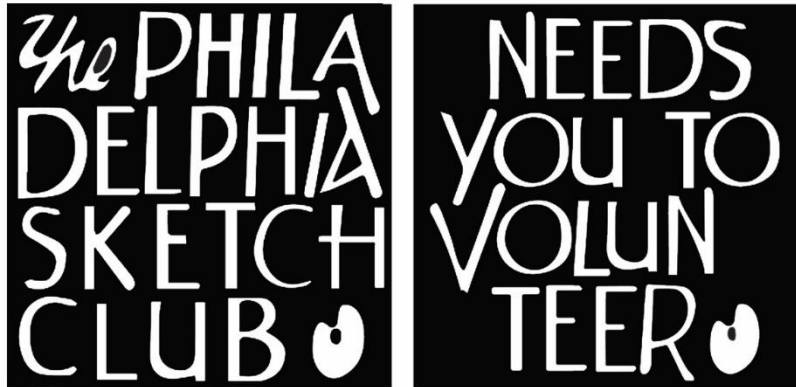
Renew Now! <http://sketchclub.org/annual-dues-payment/>

If you have any questions about your membership, please don't hesitate to contact us at membership@sketchclub.org or call the office: 215-545-9298.

Volunteer

Be an Active Sketch Club Member; Volunteer!!

The Philadelphia Sketch Club is managed entirely by volunteers except for the gallery manager, housekeeping, and bookkeeper.



The PSC always needs volunteer members. Volunteering is one of the most important aspects of being a Sketch Club member and it is the one of the best ways to take advantage of the PSC. You'll be working with colleagues who share the same interests and helping the PSC provide unique services to the visual arts community. Sign up for an activity today.

Here are some of the activities that volunteers perform:

- Chair exhibitions
- Assist in hanging exhibitions
- Covering exhibition drop-offs and pick-ups
- Monitor workshops
- Assist with presentations
- Serve on the Board of Directors
- Serve as Key Circle volunteers
- Publish the Portfolio
- Manage the PSC web site
- Gallery coverage
- Graphics for Portfolio, PSC web site, social media
- Assist in every aspect of managing the club and providing member services

To get involved, contact us at: info@sketchclub.org

Support the Sketch Club

Contribute

Please consider making your tax-deductible contribution now. These funds will be put to good use providing enhanced services to our members and friends.

Membership dues cover only a small portion of the PSC's operating expenses. Competition for funding for arts organizations like the Sketch Club is increasingly competitive and total funding for the arts is shrinking. Your additional support will keep the PSC an active support for visual artists in the Metropolitan Philadelphia area. The Philadelphia Sketch Club is an IRS designated 501(c) (3) non-profit organization.

You can call the office at 215-545-9298, mail checks to the Sketch Club or visit the Contribute page of our Website.

Visit our **Contribute** page of our website to give online at:

<http://sketchclub.org/support-us/>

You can also support the PSC on an ongoing basis when you shop on Amazon. Go to:

<http://smile.amazon.com/> and enter the Philadelphia Sketch Club in the Pick your own charitable organization box.

Your support makes it possible for the PSC to continue providing ongoing daily workshops and numerous annual gallery exhibitions.

Like, Link & Share

If you're not following the Philadelphia Sketch Club on Facebook re-tweeting Sketch Club tweets yet, it's time that you did. We have well over 2000 Facebook followers. Get the word out about the Sketch Club. Please click the like button and share your comments and invite your friends to like our page.

Follow @PhilaSketchClub on Twitter, we have almost 400 followers. Please click the heart button and re-tweet our announcements.

Include links on your website, blogs and social media to The Philadelphia Sketch Club to increase traction across social media platforms.

Follow us on Facebook, Twitter and Instagram now!



Member Classifieds



Your Ad Here... Have something to sell? Looking for something?
Contact portfolio@sketchclub to arrange for posting.



Gallery hours: By appointment: Wednesday, Friday, Saturday, Sunday: 1 PM to 5 PM

May 2022

The Portfolio: The newsletter of the Philadelphia Sketch Club is published monthly. Editor, technical support, and webmaster: Ken Weiner. Send your member news, announcements and corrections to portfolio@sketchclub.org. The due date for all materials is one week before the end of the month.

Back issues of the Portfolio are available at: <http://sketchclub.org/portfolio-archive/>

Thanks to PSC member volunteer **Ken Weiner** for his ongoing support of Sketch Club technology and communications functions.

The Philadelphia Sketch Club

235 S Camac Street
Philadelphia, PA 19107
(215) 545-9298
<http://sketchclub.org/>
gallerymanager@sketchclub.org
info@sketchclub.org

Gallery Manager: Kaylie Minzola

Officers:

- President: Richard Harrington
- Vice President: Kenneth Weiner
- Secretary: Elise Anzini
- Treasurer: William Patterson

Board of Directors

- Jacqueline Barnett
- Renard Edwards
- Stephen Iwanczuk
- Edward Pluciennik
- Charles F. Tarr
- Gail Williams