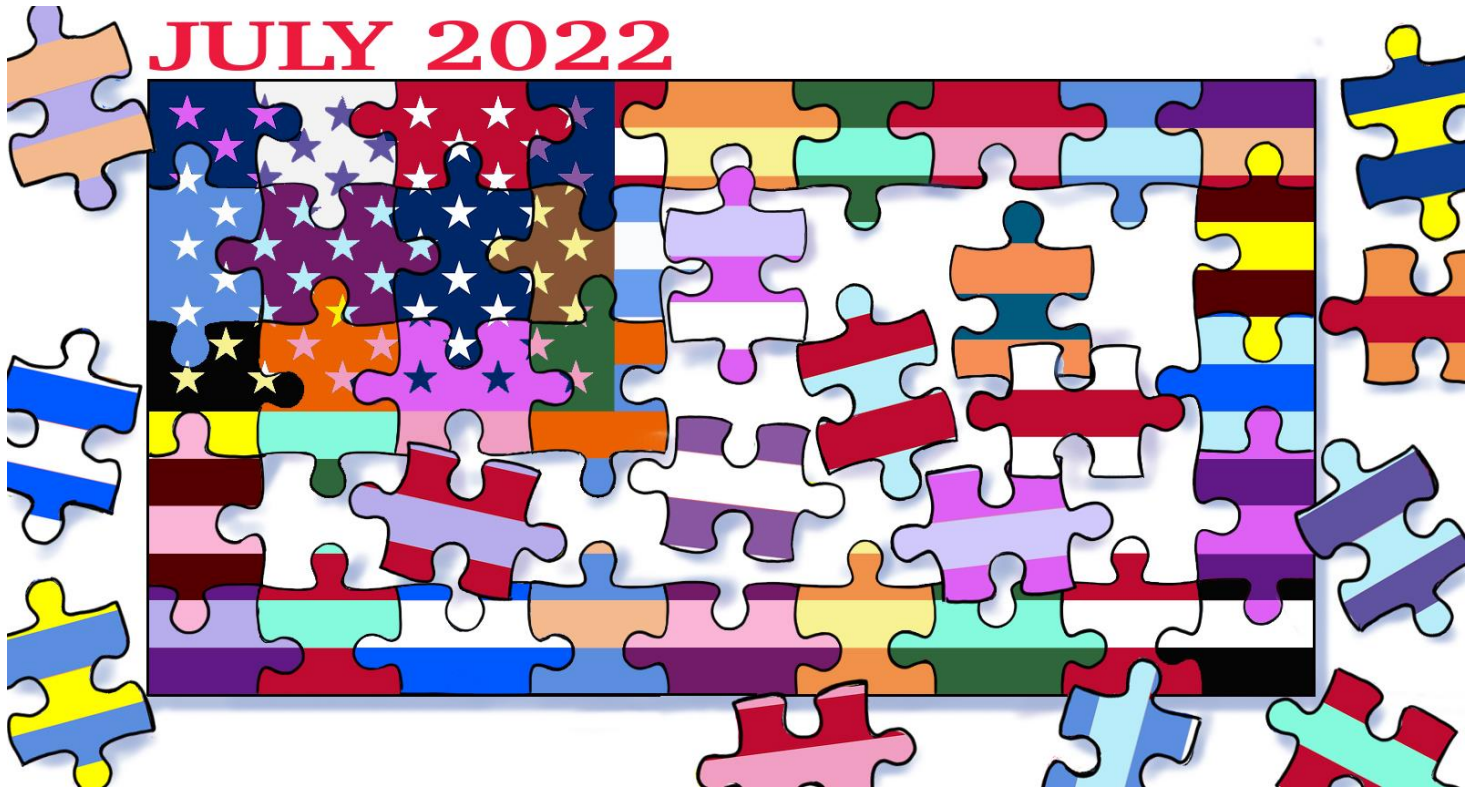


Gallery hours: By appointment: Wednesday, Friday, Saturday: 1 PM to 5 PM

July 2022



Rich Harrington

This Month's Portfolio

Sketch Club Special Events	2
Volunteer	3
Sketch Club Critique Group	5
Main Gallery Events	6
Stewart Gallery Events	7
Sketch Club Open Workshop Schedule	13
Opportunities/Notices	15
Membership	19
Support the Sketch Club	20
Classifieds	20

Send your member news, announcements, and corrections to:
portfolio@sketchclub.org. The deadline for ALL submissions is
1-week before the end of the month.

Reminder: It's never too late. You can always renew
your membership

You may pay online at <http://sketchclub.org/annual-dues-payment/> or mail your check to:

The Philadelphia Sketch Club

235 S. Camac St.

Philadelphia, PA 19107

For questions please contact the Gallery Manager at
215-545-9298 or email:

gallerymanager@sketchclub.org

Late Breaking News – See items that were submitted
after the publication date. Go to:

<http://sketchclub.org/late-breaking-news/>

The PSC general email is: [info@sketchclub](mailto:info@sketchclub.org)

Sketch Club Special Events

Sketch Club On-Line Gallery: **Always Room for More Work!**

There's always room for more work: Submit Now!

The Sketch Club is hosting an on-going open gallery at: <http://sketchclub.org/sketch-club-open-gallery/>. This gallery is open to PSC members and non-members.

Submit up to 4 images of your work or of yourself working along with a very brief description to: portfolio@sketchclub.org.

Include for your work: Your name; Title; size; and medium.

For photos of yourself include: who you are and a brief description of the image.

On-Line Resources

- The Sketch Club Critique Group: <https://www.facebook.com/groups/PSCCritique>
- The Sketch Club Open Gallery: <https://sketchclub.org/sketch-club-open-gallery/>
- The Sketch Club's web site: sketchclub.org
- Our Facebook page: <https://www.facebook.com/thesketchclub/>
- Instagram: <https://www.instagram.com/philadelphiasketch/>
- Twitter: <https://twitter.com/PhilaSketchClub>
- Members: Stay in touch with other PSC colleagues. For contact information, go to the members only page at: <http://sketchclub.org/members-only-2/>. See Stay in touch with current Sketch Club Members in the members section below for instructions.

Non-Sketch Club friends can find a listing of current members names and business websites if they have one at:

<http://sketchclub.org/sample-page/current-members-contact-list/>.

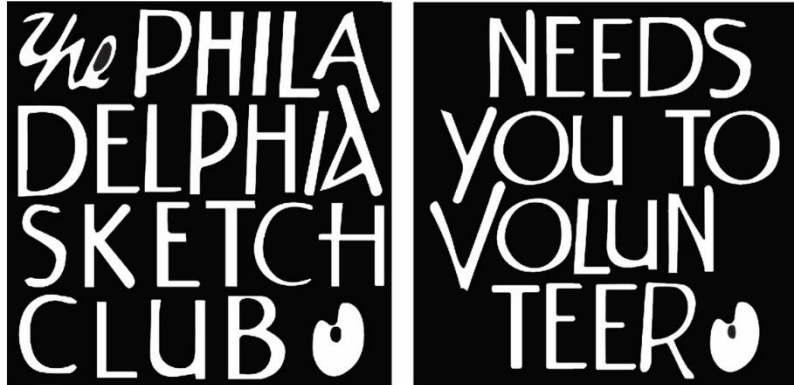
Support the Sketch Club through Amazon Smile

Make free donations to the Sketch Club anytime you shop at Amazon Smile. Remember that anyone who purchases through Amazon can have Amazon make a contribution to the Club for most every purchase you make. Just log in and go to: smile.amazon.com -From there you can select the Philadelphia Sketch Club as your non-profit charity . Done. Then the Club receives a percentage of most every purchase you make. It is a painless way to contribute to the Club's welfare. Most purchases made on your mobile app and from Whole Foods qualify too! Go to smile.amazon.com/about/ to learn more.

Volunteer

Be an Active Sketch Club Member; Volunteer!!

The Philadelphia Sketch Club is managed entirely by volunteers except for the gallery manager, housekeeping, and bookkeeper.



The PSC always needs volunteer members. Volunteering is one of the most important aspects of being a Sketch Club member and it is the one of the best ways to take advantage of the PSC. You'll be working with colleagues who share the same interests and helping the PSC provide unique services to the visual arts community. Sign up for an activity today.

Here are some of the activities that volunteers perform:

- Chair exhibitions
- Assist in hanging exhibitions
- Covering exhibition drop-offs and pick-ups
- Monitor workshops
- Assist with presentations
- Serve on the Board of Directors
- Serve as Key Circle volunteers
- Publish the Portfolio
- Manage the PSC web site
- Gallery coverage
- Graphics for Portfolio, PSC web site, social media
- Assist in every aspect of managing the club and providing member services

To get involved, contact us at: info@sketchclub.org

Volunteer: The PSC needs a Chairperson to organize and manage upcoming Sketchclub Exhibitions. Contact our PSC Gallery Manager Kaylie Minzola at gallerymanager@sketchclub.org for details if you are interested.

Gallery hours: By appointment: Wednesday, Friday, Saturday: 1 PM to 5 PM

July 2022

Volunteer

Volunteers Needed for Gallery Sitting:

Please contact the office gallerymanager@sketchclub.org, or call the office 215-545-9298
Wednesdays and Fridays 11-5pm. Your assistance would be greatly appreciated.

WORKSHOP MONITOR WANTED

Wednesday Nights, 6:30-9:30pm

Volunteer Position

email: Gallerymanager@sketchclub.org

The PHILA
DELPHIA
SKETCH
CLUB



Stand in the shoes
of our former class instructors
such as Thomas Eakins!

For more information, please contact our Gallery Manager, Kaylie Minzola at:
gallerymanager@sketchclub.org

Sketch Club Critique Group

The Sketch Club Critique FaceBook Group

Join the Critique Facebook Group

Join your Club colleagues online at the "Philadelphia Sketch Club Critique"-- a Private group for Active PSC members only on Facebook.



Colleagues, please join in and contribute to your online art community. We all miss the camaraderie we enjoy at the Club house. The "Philadelphia Sketch Club Critique" is a chance to get together online until we can gather once more around the punch bowl and raise a toast, "to the Sketch Club, past, present and future."

Here's how it works:

- Active members go to the new "Philadelphia Sketch Club Critique" page and request access, which is available to all Club members in good standing.
- Once in post your work and watch as other members' post their artwork for critique.
- More details will be posted within the group including the option to be considered for a monthly "Highlights", a curated online gallery to be published on our external site/Instagram/Twitter channels.

This Facebook Group is private; this means that as Members submit their work others are invited to critique each other in a professional and respectful way.

Critique Group Links:

- You can find a link on the Sketch Club website: <https://sketchclub.org/>
- The Critique Group's Facebook Page: <https://www.facebook.com/groups/PSCCritique>
- The PSC's main FaceBook page: <https://www.facebook.com/thesketchclub>

Tax Info for Artists

Sketch Club members might be interested in this summary article with 2022 tax information for freelancers.

-- Submitted by Don Gauger

<https://blog.freelancersunion.org/2022/01/11/whats-new-for-freelancers-in-tax-year-2022/>

Gallery hours: By appointment: Wednesday, Friday, Saturday: 1 PM to 5 PM

July 2022

Main Gallery Events

Gallery Hours: Wednesday, Friday, Saturday 1 to 5pm

[See the Sketch Club Open Gallery](#)

<https://sketchclub.org/exhibition-schedule-2021-2/>

[Important Dates for all PSC Activities](#)

July 4th through July 31st, 2022



2022 PSC Workshop Show

At the Philadelphia
Sketch Club!

Gallery hours: By appointment: Wednesday, Friday, Saturday: 1 PM to 5 PM

July 2022

Stewart Gallery Events



Exhibition space in the Stewart Gallery is available for PSC Members!

Reserve the gallery by contacting our
Exhibition Coordinator:
exhibitions@sketchclub.org

The space is \$150 for a month. Members can show once in the Stewart Gallery per year.

[See the Sketch Club Open Gallery](https://sketchclub.org/exhibition-schedule-2021-2/)
<https://sketchclub.org/exhibition-schedule-2021-2/>
[Important Dates for all PSC Activities](#)

Gallery hours: By appointment: Wednesday, Friday, Saturday: 1 PM to 5 PM

July 2022

Art Natters: Members News

Visit the Sketch Club Online Gallery

Go to the Sketch Club's on-going open gallery to see recent updates with work by PSC members and friends:

<http://sketchclub.org/sketch-club-open-gallery/>.

Members and friends can submit up to 4 images. Send your submissions to:

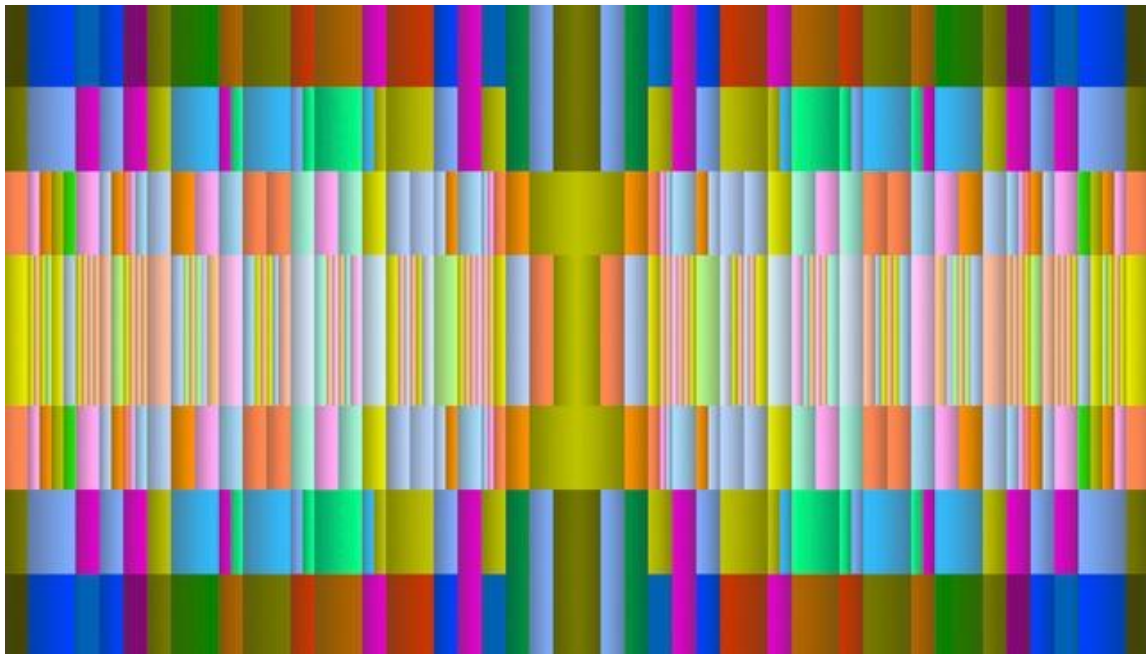
portfolio@sketchclub.org.

Include for your work: Your name; Title; size; and medium.

For photos of yourself, include Who you are and a brief description of the image.

Sketch Club member Nancy Herman has opened her online gallery

Visit at: <https://vimeo.com/721989828>



Gallery hours: By appointment: Wednesday, Friday, Saturday: 1 PM to 5 PM

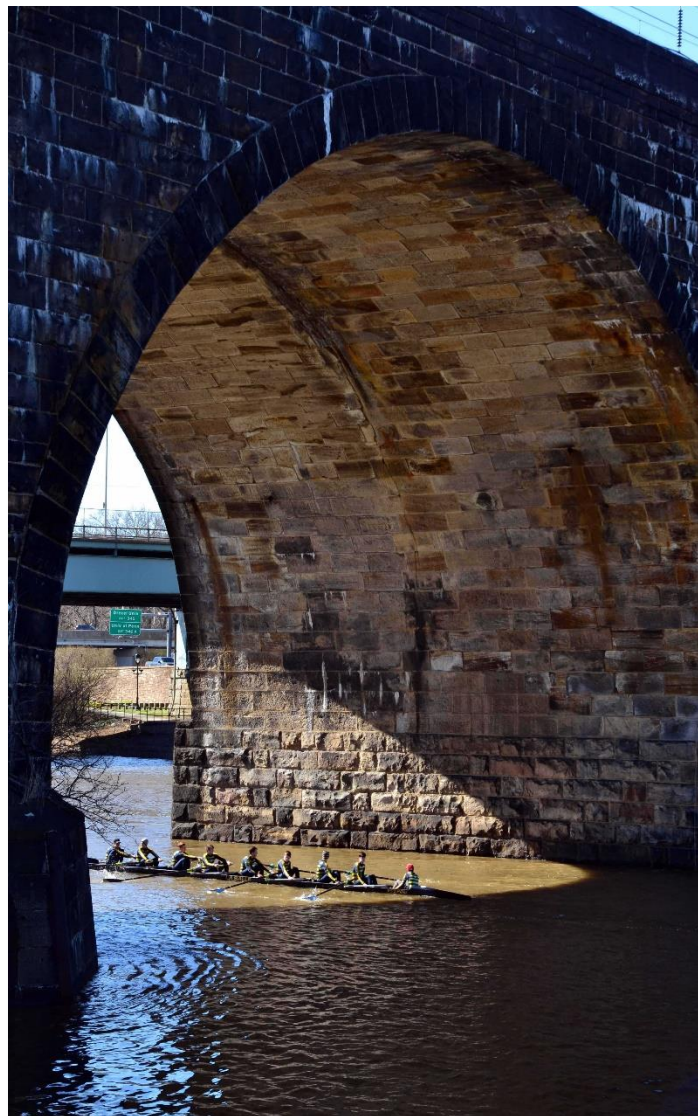
July 2022

Art Natters: Members News

Photographer, **Melvin A. Chappell** a Sketch Club member, received The David Latin Williams Prize for Bontanical/Landscape Art at the Plastic Clubs 108th Annual Member's Medal Exhibition.

Chappell's photo, "Under the Bridge", was awarded the Prize by Patricia Ricci, Professor of Art, Elizabethtown College.

This show closed on May 31, 2022. But can still be viewed online: www.plasticclub.org



Under the Bridge

Gallery hours: By appointment: Wednesday, Friday, Saturday: 1 PM to 5 PM

July 2022

Art Natters: Members News

From Sketch Club member **Garry Grissom**: I'm happy to have my drawing: Yohan, Orwell, a Gray Day (Graphite, Colored Pencils & charcoal on paper, 16" w x 22" h, 2020) juried into Cerulean Arts' 10th Annual Juried Exhibition (June 15 - July 17, 2022)



Yohan, Orwell, a Gray Day

Website

<http://www.garygrissom.net>

Instagram

<https://www.instagram.com/garygrissom/>

InLiquid

<https://inliquid.org/artist/grissom-gary/>

Da Vinci Art Alliance

<https://davinciartalliance.org/gary-grissom>

Gallery hours: By appointment: Wednesday, Friday, Saturday: 1 PM to 5 PM

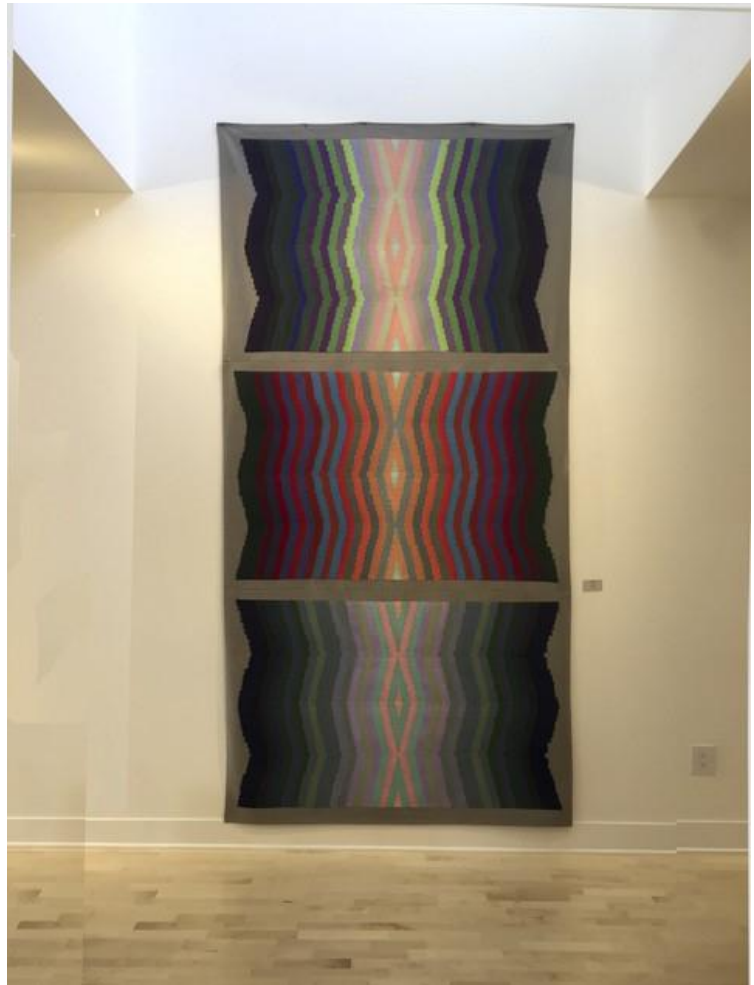
July 2022

Art Natters: Members News

Sketch Club member **NANCY HERMAN's** STUDIO GALLERY, 109 NORTH ESSEX AVE IN NARBERTH, PA. One block from the Septa train station a 15 minute ride form 30th street.

NOW OPEN. Come one come all. Take in the color and the light. Find work in 3D.

Open most afternoons from 1:00 to 5:00. Call to be sure I'll be there. 215-779-2251



Gallery hours: By appointment: Wednesday, Friday, Saturday: 1 PM to 5 PM

July 2022

Art Natters: Members News

From Sketch Club member **Colleen Hammond**

**Join us for a Creative
HAPPY**

Thursday, July 14th

HOUR *

Philadelphia CollageWorks is excited to share this opportunity for you to participate in our newest community-based art project: "Community Collage Quilt". Through this project we hope to create a collage quilt made up of precut 5 inch square cards that will represent the diversity of the community, and raise awareness of the fun, unique and welcoming craft of collage.

***Creative \$5 Specials:
Curry Cheese Chips, Carlsberg Lager,
Magners Irish Cider, & Sangria**

PHILADELPHIA COLLAGE WORKS

- No fee
- All materials provided
- No experience necessary

*** Happy Hour 5-7PM**

THE VICTORIA FREEHOUSE

10 SOUTH FRONT STREET, PHILADELPHIA PA 19106

Made with PosterMyWall.com

Sketch Club Open Workshop Schedule

Welcome Back!

Sketchclub.org • (215) 545-9298 • 235 S Camac St, Philadelphia, PA 19107

Workshops

Fees

\$10 Model Workshop sessions, \$9 for members
\$6 for full time students

Model Tips are optional but appreciated

Bring your drawing and painting materials!



Life Model

Monday	6:30 pm - 9:30 pm Extended pose	Monitor: Emily Hirtle
Tuesday	12:00 pm - 3:00 pm Extended pose	Monitor: Jacqueline Barnett
Wednesday	6:30 pm - 9:30 pm Extended pose	Monitor: Valerie Lang
Saturday	9:30am- 12:30pm Extended pose	Monitor: Jacqueline Barnett

Costumed Model

Thursday	12:00pm-3:00pm Extended pose	Monitor: Bob Bohne
----------	---------------------------------	--------------------

Tables, chairs, and easels provided. Please bring your own supplies
Vaccination required for entry

Coming in 2022!

We are planning to add a Friday evening still life workshop to the schedule. Sketch Club member **Tom Kohlmann** will monitor.

Watch for emails or visit
<https://sketchclub.org> for more details on the still life workshop and holiday cancellations.

The Sketch Club offers in person workshops in compliance with CDC guidelines.

All workshops are open to the public.

There is no need to register before attending. You do NOT have to be a member of the Philadelphia Sketch Club to participate in the workshops. Our workshops are open to anyone who is interested in drawing, painting, or printmaking. All skill levels are welcome.

Please Note: Those who use oil paints should bring their own container(s) to remove used solvents. Odorless solvents only. See more important attendee information at: [Workshop Attendee Responsibilities](#)

Thank you to all the PSC members who donate their time and expertise to make these workshops available to PSC members and the Philadelphia art community.

Sketch Club Open Workshop Schedule

Workshop Attendee Responsibilities

During this period of returning to normal, we must remember to observe that some may choose be wearing masks and to respect a 6 foot distance.

Fees will be collected after the second pose. \$9 for non-members, \$8 for members, \$6 for full time students.

When setting up, please give space for others behind or in front of you. Make sure those in back can see the model.

Please observe the easel arrangement in the storage closet and replace your easel in the same manner.

Please make every effort to wipe down your easel when leaving and make sure around your easel is clear of charcoal or pastel dust.

Please put back your easel if leaving early. Use the 10-minute rest to clean up.

Please to not use turpentine for oils.

Please do all aerosol spraying outdoors, front or back yard.

If there is a change in the models pose, please inform the monitor instead of the model.

There will be two snacks available each week. The person who brought them will take these home, only coffee and tea will remain in the cabinet.

Please try to come in early to find an optimal spot to work in to reduce disturbance during workshop time.

Anyone who needs a locker or has fees for a locker should talk to Chuck Tarr, usually here on Tuesdays, or contact the office at 215-545-9298.

Thank you for your efforts to make workshops as efficient and rewarding as possible!

Opportunities/Notices

As a courtesy to our non-PSC-member friends, in support of the Philadelphia artist community, we publish your notices, etc., free of charge. However, contributions to the PSC are always welcome. And, we will gladly consider your application for membership

[Contribute to the Sketch Club Here](#) [Apply for PSC Membership Here](#)

ART News from Linda Dubin Garfield



Summer 2022 Volume 17 Number 3

In This Issue:

Green Art Show at
North Star Orchards

Recycled/Reclaimed at
Main Line Art Center

Collective Awareness at
Da Vinci Art Alliance

A Summer of Color-
Abstract Show at
The Plastic Club

Studio Visit
at Bala Cynwyd

CFEVA
at Penn Radnor

DVAA Book Club

Greetings!

Welcome to my newsletter!

**I BELIEVE ART MAKES THE WORLD A BETTER
PLACE.**

Join me at some of these wonderful art shows in
various venues this summer.

My studio is open and ready for you to come for a
studio visit. Contact me to arrange it. We follow
Covid guidelines which, thank goodness, are
loosening up.

I look forward to seeing you soon.

Praying for peace in Ukraine and everywhere!

Creatively yours,
Linda

Quick Links:

ARTsister.org

smartbusinessconsulting.org



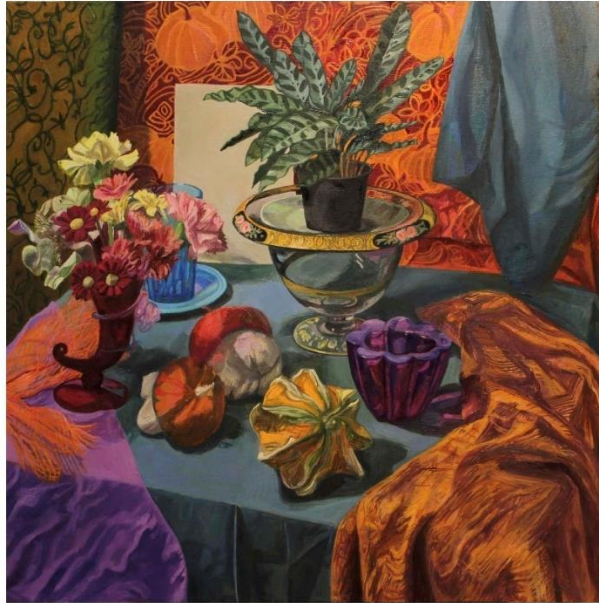
For more information: <https://www.lindadubingarfield.com/>

Gallery hours: By appointment: Wednesday, Friday, Saturday: 1 PM to 5 PM

July 2022

Opportunities/Notices

CONTEMPORARY STILL LIFE CLASS AT THE CERULEAN ARTS GALLERY



TAUGHT BY ELIZABETH HELLER, PHILADELPHIA PAINTER AND SCULPTOR

FOUR WEEKS, SATURDAYS, JUNE 4- 25, 9AM - 1 PM. REGISTER by MAY 27th, 2022.

CLASS SIZE LIMITED TO SIX STUDENTS.

LEARN A STEP-BY-STEP PROCESS AS YOU WORK DIRECTLY FROM A SERIES OF
ENGAGING STILL LIFE ARRANGEMENTS AND DEVELOP YOUR OIL PAINTING SKILLS.

FOR MORE INFORMATION, MATERIALS LIST, AND CLASS SCHEDULE, HERE IS THE

LINK: <https://ceruleanarts.com/products/contemporary-still-life-painting-in-oil-with-elizabeth-heller-in-person>

ALSO SEE MORE ARTWORK BY ELIZABETH HELLER @<https://elizabethhellerart.com>

Opportunities/Notices

The Red Door from **Diane Tomash**: Knowing the fog would clear left me waiting to see what would be revealed. There, on the water's edge, the muted structure with the red door. Memories of another time soothe the soul.

Diane's *Super Moon* was accepted into the Cerulean Arts' 9th Annual Juried Exhibition. Out of nearly 400 entries, 22 were chosen. Her Painting "Super Moon" was one of those 22. She painted it en Plein air.

The Exhibition dates are Wednesday, June 16 through Sunday July 18, 2021. Cerulean Arts' Gallery is located at 1355 Ridge Avenue, Philadelphia, PA, 19123.



The Red Door, Pastel, 20" x 20"



Super Moon

The Cerulean Arts hours are Wednesday -Friday, 10am - 6pm, Saturday & Sunday 12 -6pm, closed on Monday and Tuesday.

A closing reception is planned for July 18, from 2pm - 5pm. Masks are required for all who enter the gallery.

Tomash has been painting for many years. She is an elected member of the American Artists Professional League, and the Catherine Lorillard Wolfe Art Club. This Painting of the *Super Moon* brings a sense of mystery and atmosphere. Tomash is inspired by transitional moments in nature. When the day yields to evening, time and tide move, something exciting happens in the air. All of this breeds material for painting.



Atlantic City in the Distance". Oil 9" x 36".

Opportunities/Notices

Now accepting submissions



Call for entries

The Annual Art Ability Exhibition and Sale at Bryn Mawr Rehab Hospital is open to artists with physical, cognitive, visual and/or hearing disabilities.

Deadline for entries: Wednesday, July 6, 2022

For detailed eligibility and submission requirements, please visit the [Art Ability Call for Entries page](#). Eligible artists should submit materials in digital format through the CaFETM website at callforentry.org (search **Art Ability**).

[Learn more about submitting your work](#)

Membership

Stay in touch with current Sketch Club Members

Don't let sheltering in place prevent you from staying in touch with your Sketch Club friends and colleagues. Sketch Club members can access contact information for all current members. Go to the members only page at: <http://sketchclub.org/members-only-2/>. After you log-in with the password sent to you in your acceptance email you can click on the Membership Directory link to access members contact information. Non-Sketch Club friends can find a listing of current members along with their websites if they have one at: <http://sketchclub.org/sample-page/current-members-contact-list/>:

Not a PSC Member?: Join Now!

If you're reading this edition of the Portfolio and you're not a member of the PSC, you should consider joining the more than 200 other Philadelphia area artists who have. The PSC is one of the most active visual art venues serving center city Philadelphia. The PSC is a hands-on organization that offers its members the opportunity to participate in all aspects of creating and presenting work to the public. It presents over 20 scheduled group and solo exhibitions annually and offers a wide range of daily workshops. [Get info and an application here.](#)

If you are a member of the PSC, please feel free to share the Portfolio with your artist friends and encourage them to become members.

Membership Renewal

You can check the status of your membership by going to the Current Members page on the PSC web-site: <http://sketchclub.org/sample-page/memberspace/>. All current members are listed. An asterisk (*) means that the membership has expired but is within the 60-day grace period for renewal. Names in red are active links to the individual's web site.

Renew Now! <http://sketchclub.org/annual-dues-payment/>

If you have any questions about your membership, please don't hesitate to contact us at membership@sketchclub.org or call the office: 215-545-9298.

Support the Sketch Club

Contribute

Please consider making your tax-deductible contribution now. These funds will be put to good use providing enhanced services to our members and friends.

Membership dues cover only a small portion of the PSC's operating expenses. Competition for funding for arts organizations like the Sketch Club is increasingly competitive and total funding for the arts is shrinking. Your additional support will keep the PSC an active support for visual artists in the Metropolitan Philadelphia area. The Philadelphia Sketch Club is an IRS designated 501(c) (3) non-profit organization.

You can call the office at 215-545-9298, mail checks to the Sketch Club or visit the Contribute page of our Website.

Visit our **Contribute** page of our website to give online at:

<http://sketchclub.org/support-us/>

You can also support the PSC on an ongoing basis when you shop on Amazon. Go to:

<http://smile.amazon.com/> and enter the Philadelphia Sketch Club in the Pick your own charitable organization box.

Your support makes it possible for the PSC to continue providing ongoing daily workshops and numerous annual gallery exhibitions.

Like, Link & Share

If you're not following the Philadelphia Sketch Club on Facebook re-tweeting Sketch Club tweets yet, it's time that you did. We have well over 2000 Facebook followers. Get the word out about the Sketch Club. Please click the like button and share your comments and invite your friends to like our page.

Follow @PhilaSketchClub on Twitter, we have almost 400 followers. Please click the heart button and re-tweet our announcements.

Include links on your website, blogs and social media to The Philadelphia Sketch Club to increase traction across social media platforms.

Follow us on Facebook, Twitter and Instagram now!



Classifieds



Your Ad Here... Have something to sell? Looking for something?
Contact portfolio@sketchclub to arrange for posting.

Classifieds

Picture Frame Sale, and framing equipment for sale. Contact Ed Ward at ward35@comcast.net. Here is an opportunity for local artists to save money on custom picture framing. We are currently in the process of down sizing and can offer framing discounts if you are willing to choose moldings from our existing inventory. Custom framing is available at \$5 a linear foot. Linear molding can be cut to your size. You can assemble your own frame, or have it assembled for \$15 each. Framing instruction is available at \$25hr.

Attached is a list of assembled frames with and without glass for sale. Glass and custom mat work are also available. Condition of frames is noted, if a touch up is required, price has been further discounted. Touch up can be easily accomplished with fine sand paper and spray paint. At the bottom of the list you will find a large paper cutter, matting equipment, an indoor-outdoor art display and litho film reference images of various subjects.

Picture Framing Sale, framing equipment for sale. Contact Ed Ward at ward35@comcast.net

Here is an opportunity for local artists to save money on custom picture framing. Many of you may know Athanasia and Edward Ward from our art work. We also have over 40 years experience in custom framing. We had a store front gallery and continue to work from our home under the name of A&A Art. We are currently in the process of down sizing and can offer framing discounts if you are willing to choose moldings from our existing inventory. Custom framing is available at \$5 a linear foot. When our inventory is gone, it will not be replaced locally. Linear molding can be cut to your size. You can assemble your own frame, or have it assembled for \$15 each. Framing instruction is available at \$25hr.

Below is a list of assembled frames with and without glass for sale. Glass and custom mat work are also available. Condition of frames is noted, if a touch up is required, price has been further discounted. Touch up can be easily accomplished with fine sand paper and spray paint.

Metal

New in package, just requires screwdriver for assembly. Hardware and clips included for securing work.

Brushed metal sides, smooth polished top.

<u>Dark copper</u>	Three	8 x 10"	\$5 each	+glass add \$5 each
		11 x 14"	\$6	+glass add \$5
		8 X 8"	\$5	+glass add \$4
<u>Pewter</u>	Three	11 x 14"	\$6	+glass add \$5
		11 x 14"	\$6 each	+glass add \$5 each
		8 x 10"	\$5 each	+glass add \$5 each
<u>Gold</u>	Two	8 X 8"	\$5	+glass add \$4
		16 x20"	\$10	+glass add \$8
		16 x20"	\$10	+glass add \$8
<u>Silver</u>		11 x14"	\$6	+glass add \$5
		11 x14"	\$6	+glass add \$5
		9 x 12"	\$6	+glass add \$5
<u>Black</u>		8 x 10"	\$5	+glass add \$5

Used Metal frames

<u>Gold</u>	18 X 18"	\$8	+glass add \$6
<u>Silver</u>	16 x20"	\$10	+glass add \$8

Wood

Measurements are inside opening.

Two 8 1/2 x 11 raw oak	\$5 each	+glass add \$4 each
Black 1" wide 12 x 16" with glass needs touch up	\$5	
Nice Art Deco style brown and black 1 1/2" wide 14 x 18	\$10	+glass add \$5
Green lacquer Nure 11 x 14" with glass needs touch up		
Two 11 x 14" 1" wide oak with glass	\$7 each	
Two 14 x 18" 1 1/2" wide oak with glass	\$10 each	
Nice 10 x 16" 2" wide black and gold	\$12	+glass add \$6
Raw oak 16 x 20" 1" wide	\$10	+glass add \$8
Unstained wood 12 x 17" 1" wide	\$10	+glass add \$8
Oak 13 x 14" 1 1/2" wide	\$10	+glass add \$8
Three Oak 11 x 14" 1 1/2" deep with glass	\$10 each	

Classifieds

Oak Shadow Box 16 x 20" 2" deep with glass	\$25	
Oak 8 3/4" x 15 3/4" 2 1/2" wide 1" deep	\$10	+glass add \$5
Silver leaf, carved corners 12 x 16" 1 1/2" wide narrow rabbit	\$12	+glass add \$6
Square profile 1" wide black 16 x 20" needs touch up	\$10	+glass add \$8
Black Décor 1/2 inch wide 18 1/2 x 14 1/2"	\$14	+glass add \$8
Four 2" wide black 11 x 14" Michael's photo frames with glass, frames need to be refinished \$5 each		
Old Oak 12 x 16"	\$10	+glass add \$5
Gold 1" wide 6 3/4 x 28" with for window mat, needs touch up	\$15	
Oak 3/4" wide 4 x 13" with glass	\$15	
White Oak 1 1/2" wide 8 x 10" narrow rabbit	\$8	+glass add \$5
Oak finish 3/4" wide 8 x 10"	\$8	+glass add \$5
9 x 12" 2" wide, 1" deep ornate antique frame with no lip for glass	\$10	
27 x 33" 1" wide Speckled black on brown with grey accent lines, glass	\$20	
30 x 35" 1 1/2" wide 1 1/2" deep square profile dark oak	\$25	+glass add \$10
Two antique carved frames need new gold leafing 3 1/4" wide inside wooden liner approx. 20 x 26" with antique glass	\$40 each	
20 x 24 1/2" Black square 1 1/2" wide, modern brown lanyard weave design on top	\$25	+glass add \$10
Silver Leaf modern bamboo 20 1/2 x 24 1/2" 1 1/4" wide	\$25	+glass add \$10
Walnut 15 x 30" 3" wide, linen liner, octagonal corners, needs cleaning and touch up	\$25	+glass add \$10
Gold 15 x 30" 3" wide, linen liner, octagonal corners, needs cleaning and touch up	\$25	+glass add \$10
25 x 29" 2" wide distressed brushed dark beach wood needs touch up	\$25	+glass add \$10
24 x 30" 3" wide 50's style carved wood frame; stripped, ready for finishing and leafing	\$30	
Antique 19th century 14 x 26" 4" wide, relief work needs refinishing	\$20	
Décor silver leaf 14 1/2 x 26 1/2" 1 1/2" wide	\$18	+glass add \$10
White Linen liner 17 x 19" fits 19 5/8" x 21 5/8" frame	\$10	
Gold Leaf Décor 20 x 24" 1 1/4" wide with black accent lines	\$20	+glass add \$10

Framing equipment for sale:

C&H Oval Master mat/glass cutter. Manual table top model 34" X 44" X 14" High. Used, with accessories and manual.	\$300
Logan Simplex Model 760, 60" tabletop mat cutter	\$200
Ingento 32" Paper cutter	\$200

Art Display

Art display for in door, or out door use. Custom made with four 4' X 8' wood framed white pegboard panels that assemble with supports for a cloth roof. Attached rear storage space 8' long 4' high 2' deep with hinged access doors.	\$300
---	-------

Reference Image Library

B & W Litho film negatives. Copy right free images of various subjects. Images are either clear on a black background or black on a clear background. Used to make printing plates or silk screens. Can be used on a light table to create new compositions. \$5 each



Gallery hours: By appointment: Wednesday, Friday, Saturday: 1 PM to 5 PM

July 2022

The Portfolio: The newsletter of the Philadelphia Sketch Club is published monthly. Editor, technical support, and webmaster: Ken Weiner. Send your member news, announcements and corrections to

portfolio@sketchclub.org. The due date for all materials is one week before the end of the month.

Back issues of the Portfolio are available at: <http://sketchclub.org/portfolio-archive/>

Thanks to PSC member volunteer **Ken Weiner** for his ongoing support of Sketch Club technology and communications functions.

The Philadelphia Sketch Club

235 S Camac Street
Philadelphia, PA 19107
(215) 545-9298
<http://sketchclub.org/>
gallerymanager@sketchclub.org
info@sketchclub.org

Gallery Manager: Kaylie Minzola

Officers:

- President: Richard Harrington
- Vice President: Kenneth Weiner
- Secretary: Elise Anzini
- Treasurer: William Patterson

Board of Directors

- Jacqueline Barnett
- Renard Edwards
- Stephen Iwanczuk
- Edward Pluciennik
- Charles F. Tarr
- Gail Williams