

Gallery hours: By appointment: Wednesday, Friday, Saturday: 1 PM to 5 PM

October 2022

WE WANT YOU

to come have a great time
at the

Philadelphia Sketch

Club's

162nd Anniversary Gala

October 22nd 2022

6 to 10 PM



Honoring

• John Ennis • Jane Golden •

• James Toogood •

Medal Presentation • Cocktails

Live Art Auction featuring works by
John Ennis, James Toogood,
Moe Brooker, and others

Silent Auction

Deluxe Hors d'oeuvres

Live music by

The Sketch Tones

(They really aren't that bad)

*Please purchase a
ticket at sketchclub.org
and help support the
Philadelphia Sketch Club!*

Rich Harrington

Purchase Tickets Here: [Gala Tickets](#)

This Month's Portfolio

162 nd Anniversary Gala	2
Sketch Club Special Events	10
Volunteer	12
Sketch Club Critique Group	14
Main Gallery Events	15
Stewart Gallery Events	15
Sketch Club Open Workshop Schedule	20
Opportunities/Notices	22
Membership	26
Support the Sketch Club	27
Classifieds	27

Send your member news, announcements, and corrections to:
portfolio@sketchclub.org. The deadline for ALL submissions is
1-week before the end of the month.

Reminder: It's never too late. You can always renew
your membership

You may pay online at <http://sketchclub.org/annual-dues-payment/> or mail your check to:

The Philadelphia Sketch Club

235 S. Camac St.

Philadelphia, PA 19107

For questions please contact the Gallery Manager at
215-545-9298 or email:

gallerymanager@sketchclub.org

Late Breaking News – See items that were submitted
after the publication date. Go to:

<http://sketchclub.org/late-breaking-news/>

The PSC general email is: info@sketchclub.org

162nd Anniversary Gala

This Month: THE PHILADELPHIA SKETCH CLUB'S 162nd ANNIVERSARY GALA



The Philadelphia Sketch Club's
162nd Anniversary Gala
Saturday October 22nd, 2022
6 to 10 PM
Honoring
**John Ennis • Jane Golden
James Toogood**

Medal Presentation, Live Art Auction,
Silent Auction, Cocktails,
Deluxe Hors d'oeuvres, Live Music



For more information
and to buy tickets visit
www.sketchclub.org
or call 215.545.9298

Photo by Kyle Cassidy

Live Auction items are original artworks by
noted artists Moe Brooker, John Ennis, James Toogood,
Carl Weber, Henry C. Pitz, Domenic DiStefano,
Anthony Michael Autorino, Cesare A. Ricciardi,
Doree Loschiavo and T. Norman Mansell.



Moe Brooker, *What Was Is, What Is Was*, 2011
Oil on panel, 12" x 12" (Donated in Honor of Jane Golden)

162nd Anniversary Gala

Dear Sketch Club Members & Friends:

The Philadelphia Sketch Club will be hosting its 162nd Anniversary Gala on Saturday, October 22, 2022, from 6 PM to 10 PM. One of the highlights of the event is that we will be honoring three of the nation's top artists, John Ennis, Jane Golden and James Toogood. We will be presenting each with the Philadelphia Sketch Club Medal for their significant achievements in the visual arts. This will be a fun and highly visible event. It will bring together our members, patrons, supporters, friends, sponsors and neighbors. It will feature a live art auction, silent auction, deluxe hors d'oeuvres, cocktails and music. It is critical that this event be a success as it is a significant fundraising vehicle for the Club.

As a member or friend of the Sketch Club, you can make our event a success by putting some thought into how you can help with this effort. You can participate by:

Purchasing tickets for you and a guest(s). See attached order form for tickets.

Be a purchaser in our live and/or silent auctions.

Encouraging your friends to purchase tickets and attend. Tickets may be purchased on our website (sketchclub.org), by calling 215-545-9298 or you can give us their names and addresses and we will make sure they are sent a ticket order form. Contact a friend or business that may donate an item to our silent auction. Donors of silent auction items will be recognized in our program booklet.

Contact an individual or business that would place an ad in our program booklet.

Contribute an additional donation to the Gala fund. Any support of \$1,000 or more will get sponsor recognition in the program booklet.

Following this email you will find a Gala ticket order form, images of artwork in our live auction, advertisement form for booklet and silent auction donation form for your use in pursuing donations. Our staff would be happy to help you with these efforts if you think it is needed so please do not hesitate to contact us with your ideas at bpatterson2045@comcast.net or 267-664-2434.

We have the backing of many important members of the artistic community. Members of our Honorary Gala Committee include Eric Pryor, President & CEO, Pennsylvania Academy of the Fine Arts; William R. Valerio, Director & CEO, Woodmere Art Museum; Kathleen A. Foster, The Robert L. McNeil, Jr., Senior Curator of American Art, Philadelphia Museum of Art; Cecelia Fitzgibbon, President, Moore College of Art and Design; Bill Scott, Artist & 2013 Honoree; Richard A. Harrington, President of the Philadelphia Sketch Club and Professor, Illustration, Moore College of Art and Design; Robert Beck, Artist & 2014 Honoree; Garth Herrick, Artist & 2015 Honoree; Gail Ferretti, an artist and art collector, and Howard Schaevitz, an engineer and an authority, collector and connoisseur of early Packard motor cars; Bill and Pat Patterson, collectors of art and Gaudy Dutch; John Thornton, Artist and Videographer; and David Weiss, Senior Vice President at Freeman's, a specialist on the *Antiques Roadshow* and guest auctioneer for the Gala live auction.

Gallery hours: By appointment: Wednesday, Friday, Saturday: 1 PM to 5 PM

October 2022

162nd Anniversary Gala

The Live Auction is one of the highlights of the evening. Live Auction items are original artworks by noted artists Moe Brooker, John Ennis, James Toogood, Henry C. Pitz, Domenic DiStefano, Anthony Michael Autorino, Carl Weber, Cesare A. Ricciardi, Doree Loschiavo and T. Norman Mansell. Pre-Gala viewing of the artworks and absentee bidding can be arranged by contacting Bill Patterson at 267-664-2434 or bpatterson2045@comcast.net.

The event will be a fun affair where you can socialize with Sketch Club members, members of the Honorary Gala Committee, and the three honorees; enjoy the food and beverages and perhaps win one of the ten artworks that will be part of our live auction (see attached).

Your help to market this year's Gala is greatly appreciated. If you have any questions or need more information, please contact me.

Best regards,

Rich Harrington
President & Co-Chair, 162nd Anniversary Gala
richardharrington3@gmail.com
610-322-8306

Bill Patterson
Co-Chair, 162nd Anniversary Gala
bpatterson2045@comcast.net
267-664-2434





Gallery hours: By appointment: Wednesday, Friday, Saturday: 1 PM to 5 PM

October 2022

162nd Anniversary Gala

THE PHILADELPHIA SKETCH CLUB'S 162ND ANNIVERSARY GALA TICKET ORDER FORM

Purchase online at: [Purchase Tickets Here](#)

You can order tickets for the 162nd Anniversary Gala by completing the below information and mailing this form to:

Philadelphia Sketch Club
Attn: GALA
235 South Camac Street
Philadelphia, PA 19107

I will be attending the Philadelphia Sketch Club's 162nd Anniversary Gala.
(Please indicate the number of tickets and total dollar amount.)

#	Type of Ticket	Ticket \$
_____	Patron: \$150 (\$125 is tax deductible)	_____
_____	Patron names will be printed in the program	_____
_____	Art Lover: \$100 (\$75 is tax deductible)	_____
_____	PAFA Alumni \$75 (\$50 is tax deductible)	_____
_____	Artist (Sketch Club members only) \$60 (\$35 is tax ded.)	_____
_____	Total	_____

I will not be able to attend the Gala but would like to make a contribution of \$ _____.

Please make your check payable to the Philadelphia Sketch Club or provide your credit card information below:

Credit Card Type (please check one)

_____ VISA _____ Mastercard _____ American Express

Account Number _____

Exp Date _____ Security Code _____

Name _____

Address _____

City, State, Zip _____

Phone _____ Email _____

TICKETS CAN ALSO BE PURCHASED ONLINE AT <http://sketchclub.org>
OR BY CALLING **215-545-9298** – RETURNED CALLS MAY TAKE A DAY OR TWO
A nonprofit organization under Chapter 501(c)(3) of the Internal Revenue Code.

Gallery hours: By appointment: Wednesday, Friday, Saturday: 1 PM to 5 PM

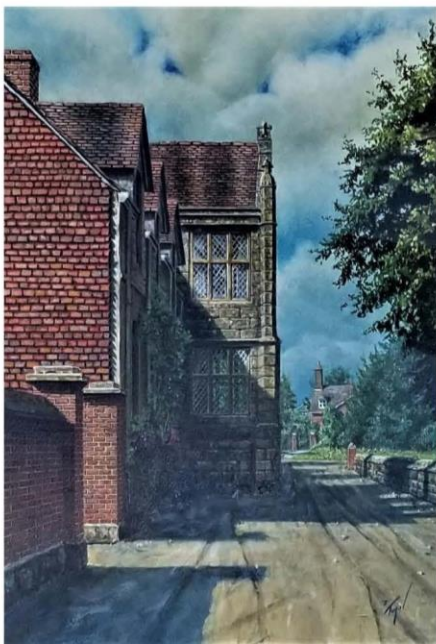
October 2022

162nd Anniversary Gala

**The Philadelphia Sketch Club,
162nd Anniversary Gala, Live Auction
Items,
October 22, 2022**



Moe Brooker, *What Was Is, What Is Was*, 2011, Oil on panel, 12" x 12" (Donated in Honor of Jane Golden)



James Toogood, AWS, NWS, AAA, *King's House, Salisbury*, Watercolor, 14.5" x 10.25"



John Ennis, *Brookside*, Oil on panel, 9" x 12"



Henry C. Pitz, (1895-1976), *Arab Warrior*, Oil on panel, 18.25" x 10"

Gallery hours: By appointment: Wednesday, Friday, Saturday: 1 PM to 5 PM

October 2022

162nd Anniversary Gala



Domenic DiStefano, AWS (1924-2011),
Gloucester Harbor, Watercolor, 21" x 29"



Doree Loschiavo, *Independence Hall*,
Watercolor, 20" x 26"



Anthony Michael Autorino, (1937-2015),
Betsy's Garden Study, 1995, Oil on panel,
9" x 14"



Cesare A. Ricciardi, (1892-1973), *Bucks
County Landscape*, Oil on panel, 11.5" x
15.5"



T. Norman Mansell, (1904-1991),
Sketch Club Rathskeller, Etching,
Plate 9.75" x 8"



Carl Weber, (1850-1921), *Sheep and Apple
Blossoms*, Watercolor, 17" x 27"



Gallery hours: By appointment: Wednesday, Friday, Saturday: 1 PM to 5 PM

October 2022

162nd Anniversary Gala

Philadelphia Sketch Club's 162nd Anniversary Gala, Honoring John Ennis, Jane Golden and James Toogood October 22, 2022

162nd Anniversary Gala Program Book

___ YES! I / We wish to advertise in the 162nd Anniversary Gala Program Booklet

PAGE SIZE: 8.5" X 5.5"

BACK COVER / Color (\$1,500) ___

INSIDE COVER / Color (\$1,000) ___

INSIDE BACK COVER / Color (\$1,000) ___

FULL PAGE/ COLOR (\$500) ___

FULL PAGE/ BLACK & WHITE (\$250)

HALF PAGE/ COLOR (\$250)

HALF PAGE/ BLACK & WHITE (\$125) ___

BUSINESS CARD (\$75) ___



Company _____

Contact _____

Address _____

Telephone _____ Email: _____

Send logo and camera-ready copy and graphics to: bpatterson2045@comcast.net

Visa, MasterCard, American Express or Discover accepted.

Please make checks payable to the
Philadelphia Sketch Club

Return by October 2, 2022, to:

235 S. Camac Street, Philadelphia, PA 19107

215-545-9298

www.sketchclub.org



Gallery hours: By appointment: Wednesday, Friday, Saturday: 1 PM to 5 PM

October 2022

162nd Anniversary Gala

Philadelphia Sketch Club's 162nd Anniversary Gala, Honoring John Ennis, Jane Golden and James Toogood October 22, 20212

SILENT AUCTION DONATIONS will be listed on the Philadelphia Sketch Club website and in
the Gala Program Book.

SILENT AND LIVE AUCTION DONATION FORM

Name of Donor: _____

Contact Name: _____

Address: _____

Telephone: _____ Email: _____

Description of Donated Item(s):

Estimated Retail Value:

Please make gift certificate(s) valid through at least through September 2022. If available, for display, please provide a brochure or menu, product sheet or any printed information that describes your products or services.

ITEMS AND DESCRIPTIONS MUST BE RECEIVED BY October 2, 2022
Any questions, please contact Bill Patterson at 267-664-2434 or bpatterson2045@comcast.net
Philadelphia Sketch Club, 235 S. Camac St., Philadelphia, PA



Sketch Club Special Events

Things to See at the Philadelphia Sketch Club



Walter E. Baum, Corner House, stone lithograph

There are several groups of artworks to see at the Philadelphia Sketch Club. A good time to do that would be when you are attending one of our major exhibitions in our main gallery. Exhibitions and their times are listed in our website at sketchclub.org. Currently in the downstairs Stewart Gallery there is an exhibition of ten artworks that will be auctioned off at the PSC's 162nd Anniversary Gala on October 22, 2022. Artists of these artworks are Moe Brooker, James Toogood, John Ennis, Henry C. Pitts, Domenic DiStefano, Anthony Michael Autorino, Cesare A. Ricciardi, Carl Weber, Doree Loschiavo and T. Norman Mansell. Another exhibition in the Stewart Gallery includes nine stone lithographs by Walter E. Baum (1884-1956). Baum was an important Pennsylvania impressionist

painter, educator, and art critic for the Philadelphia Bulletin. He was a member of the PSC from 1929 to 1956.

Complementing the Baum lithograph exhibition are two woodblock prints by Edward C. Warwick (1881-1973). Warwick was Dean of the Philadelphia College of Art (now The University of the Arts) and was a PSC member from 1909 to 1973.



Edward C. Warwick, Jumping Stags, wood block print

Sketch Club Special Events

Sketch Club On-Line Gallery: **Always Room for More Work!**

There's always room for more work: Submit Now!

The Sketch Club is hosting an on-going open gallery at: <http://sketchclub.org/sketch-club-open-gallery/>. This gallery is open to PSC members and non-members.

Submit up to 4 images of your work or of yourself working along with a very brief description to: portfolio@sketchclub.org.

Include for your work: Your name; Title; size; and medium.

For photos of yourself include: who you are and a brief description of the image.

On-Line Resources

- The Sketch Club Critique Group: <https://www.facebook.com/groups/PSCCritique>
- The Sketch Club Open Gallery: <https://sketchclub.org/sketch-club-open-gallery/>
- The Sketch Club's web site: sketchclub.org
- Our Facebook page: <https://www.facebook.com/thesketchclub/>
- Instagram: <https://www.instagram.com/philadelphiasketch/>
- Twitter: <https://twitter.com/PhilaSketchClub>
- Members: Stay in touch with other PSC colleagues. For contact information, go to the members only page at: <http://sketchclub.org/members-only-2/>. See Stay in touch with current Sketch Club Members in the members section below for instructions.

Non-Sketch Club friends can find a listing of current members names and business websites if they have one at:

<http://sketchclub.org/sample-page/current-members-contact-list/>.

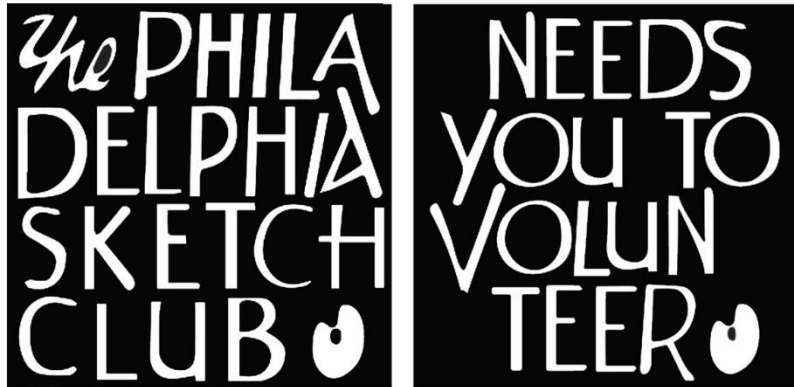
Support the Sketch Club through Amazon Smile

Make free donations to the Sketch Club anytime you shop at Amazon Smile. Remember that anyone who purchases through Amazon can have Amazon make a contribution to the Club for most every purchase you make. Just log in and go to: smile.amazon.com -From there you can select the Philadelphia Sketch Club as your non-profit charity . Done. Then the Club receives a percentage of most every purchase you make. It is a painless way to contribute to the Club's welfare. Most purchases made on your mobile app and from Whole Foods qualify too! Go to smile.amazon.com/about/ to learn more.

Volunteer

Be an Active Sketch Club Member; Volunteer!!

The Philadelphia Sketch Club is managed entirely by volunteers except for the gallery manager, housekeeping, and bookkeeper.



The PSC always needs volunteer members. Volunteering is one of the most important aspects of being a Sketch Club member and it is the one of the best ways to take advantage of the PSC. You'll be working with colleagues who share the same interests and helping the PSC provide unique services to the visual arts community. Sign up for an activity today.

Here are some of the activities that volunteers perform:

- Chair exhibitions
- Assist in hanging exhibitions
- Covering exhibition drop-offs and pick-ups
- Monitor workshops
- Assist with presentations
- Serve on the Board of Directors
- Serve as Key Circle volunteers
- Publish the Portfolio
- Manage the PSC web site
- Gallery coverage
- Graphics for Portfolio, PSC web site, social media
- Assist in every aspect of managing the club and providing member services

To get involved, contact us at: info@sketchclub.org

Volunteer: The PSC needs a Chairperson to organize and manage upcoming Sketchclub Exhibitions. Contact our PSC Gallery Manager Kaylie Minzola at gallerymanager@sketchclub.org for details if you are interested.

Gallery hours: By appointment: Wednesday, Friday, Saturday: 1 PM to 5 PM

October 2022

Volunteer

Volunteers Needed for Gallery Sitting:

Please contact the office gallerymanager@sketchclub.org, or call the office 215-545-9298
Wednesdays and Fridays 11-5pm. Your assistance would be greatly appreciated.

WORKSHOP MONITOR WANTED

Wednesday Nights, 6:30-9:30pm

Volunteer Position

email: Gallerymanager@sketchclub.org

THE PHILA
DELPHIA
SKETCH
CLUB



Stand in the shoes
of our former class instructors
such as Thomas Eakins!

For more information, please contact our Gallery Manager, Kaylie Minzola at:
gallerymanager@sketchclub.org

Gallery hours: By appointment: Wednesday, Friday, Saturday: 1 PM to 5 PM

October 2022

Sketch Club Critique Group

The Sketch Club Critique FaceBook Group

Join the Critique Facebook Group

Join your Club colleagues online at the "Philadelphia Sketch Club Critique"-- a Private group for Active PSC members only on Facebook.



Colleagues, please join in and contribute to your online art community. We all miss the camaraderie we enjoy at the Club house. The "Philadelphia Sketch Club Critique" is a chance to get together online until we can gather once more around the punch bowl and raise a toast, "to the Sketch Club, past, present and future."

Here's how it works:

- Active members go to the new "Philadelphia Sketch Club Critique" page and request access, which is available to all Club members in good standing.
- Once in post your work and watch as other members' post their artwork for critique.
- More details will be posted within the group including the option to be considered for a monthly "Highlights", a curated online gallery to be published on our external site/Instagram/Twitter channels.

This Facebook Group is private; this means that as Members submit their work others are invited to critique each other in a professional and respectful way.

Critique Group Links:

- You can find a link on the Sketch Club website: <https://sketchclub.org/>
- The Critique Group's Facebook Page: <https://www.facebook.com/groups/PSCCritique>
- The PSC's main FaceBook page: <https://www.facebook.com/thesketchclub>

Tax Info for Artists

Sketch Club members might be interested in this summary article with 2022 tax information for freelancers.

-- Submitted by Don Gauger

<https://blog.freelancersunion.org/2022/01/11/whats-new-for-freelancers-in-tax-year-2022/>

Gallery hours: By appointment: Wednesday, Friday, Saturday: 1 PM to 5 PM

October 2022

Main Gallery Events

Gallery Hours: Wednesday, Friday, Saturday 1 to 5pm

[See the Sketch Club Open Gallery](https://sketchclub.org/exhibition-schedule-2021-2/)

<https://sketchclub.org/exhibition-schedule-2021-2/>

[Important Dates for all PSC Activities](https://sketchclub.org/exhibition-schedule-2021-2/)

Stewart Gallery Events



**Exhibition space in
the Stewart Gallery
is available for PSC
Members!**

Reserve the gallery by
contacting our
Exhibition Coordinator:
exhibitions@sketchclub.org

The space is \$150 for a
month. Members can
show once in the Stewart
Gallery per year.

[See the Sketch Club Open Gallery](https://sketchclub.org/exhibition-schedule-2021-2/)

<https://sketchclub.org/exhibition-schedule-2021-2/>

[Important Dates for all PSC Activities](https://sketchclub.org/exhibition-schedule-2021-2/)

Gallery hours: By appointment: Wednesday, Friday, Saturday: 1 PM to 5 PM

October 2022

Art Natters: Members News

Visit the Sketch Club Online Gallery

Go to the Sketch Club's on-going open gallery to see recent updates with work by PSC members and friends:

<http://sketchclub.org/sketch-club-open-gallery/>.

Members and friends can submit up to 4 images. Send your submissions to:

portfolio@sketchclub.org.

Include for your work: Your name; Title; size; and medium.

For photos of yourself, include Who you are and a brief description of the image.

Sketch Club Member **Nina Yocom** has just launched a new website.

Visit at: <https://www.ninayocom.com/>

Powell Lane Arts

"Changelings"

Exhibition

September 8 -

November 20, 2022

Opening Reception:

Saturday,

September 10, 3-6



Wanderers, 5 x 7, Alcohol Ink on Paper: Framed 10 x 12

www.powelllanearts.com

Art Natters: Members News

Sketch Club member John R. Dorchester will have a one-person exhibition at 919 North Market Street, Wilmington, DE 19801, starting October 2 and running through the end of December of 2022. There will be an opening on October 7 from 5-7PM. The exhibition space is on the ground floor of the 919 building, a grand, open space with soaring 20 foot ceilings. John's show follows the current exhibition from the Delaware Contemporary Art Institute. The exhibition will include approximately 25 landscape, figure and political paintings painted within the last six years.

John, a 1982 graduate of the Pennsylvania Academy of Fine Arts, made a living as a commercial filmmaker from 1994 through 2014, before returning to his roots as a painter and musician. Since then his work has garnered awards and been in exhibits across the country including the Philadelphia Sketch Club and the Salmagundi Club in New York City. He is represented by Carspecken-Scott Gallery in Wilmington DE.

For more information, please contact john@johndorchester.net.



"Buttercup" 24" X 30" Oil on Linen ©John R. Dorchester

Gallery hours: By appointment: Wednesday, Friday, Saturday: 1 PM to 5 PM

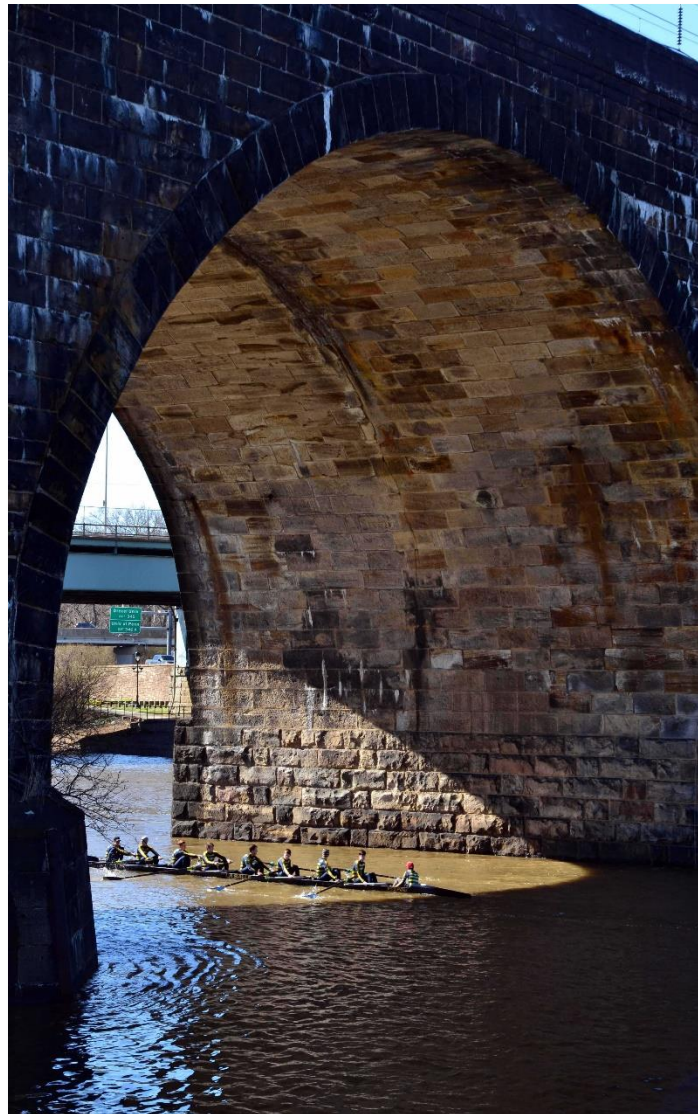
October 2022

Art Natters: Members News

Photographer, **Melvin A. Chappell** a Sketch Club member, received The David Latin Williams Prize for Bontanical/Landscape Art at the Plastic Clubs 108th Annual Member's Medal Exhibition.

Chappell's photo, "Under the Bridge", was awarded the Prize by Patricia Ricci, Professor of Art, Elizabethtown College.

This show closed on May 31, 2022. But can still be viewed online: www.plasticclub.org



Under the Bridge

Gallery hours: By appointment: Wednesday, Friday, Saturday: 1 PM to 5 PM

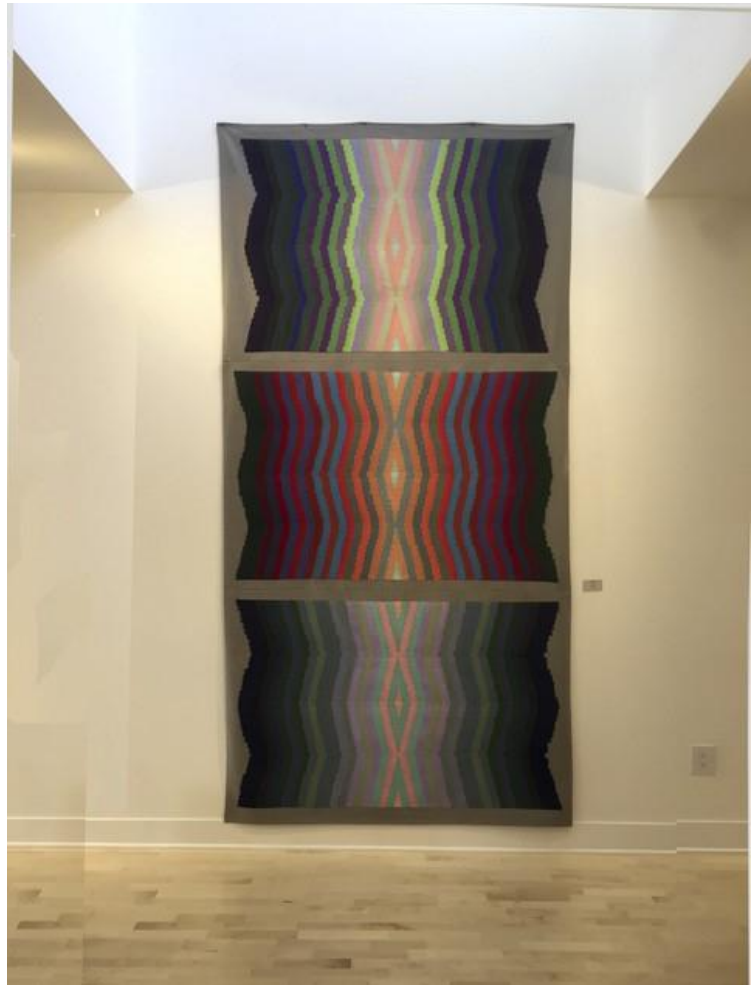
October 2022

Art Natters: Members News

Sketch Club member **NANCY HERMAN's** STUDIO GALLERY, 109 NORTH ESSEX AVE IN NARBERTH, PA. One block from the Septa train station a 15 minute ride form 30th street.

NOW OPEN. Come one come all. Take in the color and the light. Find work in 3D.

Open most afternoons from 1:00 to 5:00. Call to be sure I'll be there. 215-779-2251



Sketch Club Open Workshop Schedule

Welcome Back!

Sketchclub.org • (215) 545-9298 • 235 S Camac St, Philadelphia, PA 19107

Workshops

Fees

\$10 Model Workshop sessions, \$9 for members
\$6 for full time students

Model Tips are optional but appreciated

Bring your drawing and painting materials!



Life Model

Monday	6:30 pm - 9:30 pm Extended pose	Monitor: Emily Hirtle
Tuesday	12:00 pm - 3:00 pm Extended pose	Monitor: Jacqueline Barnett
Wednesday	6:30 pm - 9:30 pm Extended pose	Monitor: Valerie Lang
Saturday	9:30am- 12:30pm Extended pose	Monitor: Jacqueline Barnett

Costumed Model

Thursday	12:00pm-3:00pm Extended pose	Monitor: Bob Bohne
----------	---------------------------------	--------------------

Tables, chairs, and easels provided. Please bring your own supplies
Vaccination required for entry

Coming in 2022!

We are planning to add a Friday evening still life workshop to the schedule. Sketch Club member **Tom Kohlmann** will monitor.

Watch for emails or visit
<https://sketchclub.org> for more details
on the still life workshop and holiday cancellations.

The Sketch Club offers in person workshops in compliance with CDC guidelines.

All workshops are open to the public.

There is no need to register before attending. You do NOT have to be a member of the Philadelphia Sketch Club to participate in the workshops. Our workshops are open to anyone who is interested in drawing, painting, or printmaking. All skill levels are welcome.

Please Note: Those who use oil paints should bring their own container(s) to remove used solvents. Odorless solvents only. See more important attendee information at: [Workshop Attendee Responsibilities](#)

Thank you to all the PSC members who donate their time and expertise to make these workshops available to PSC members and the Philadelphia art community.

Sketch Club Open Workshop Schedule

Workshop Attendee Responsibilities

During this period of returning to normal, we must remember to observe that some may choose be wearing masks and to respect a 6 foot distance.

Fees will be collected after the second pose. \$9 for non-members, \$8 for members, \$6 for full time students.

When setting up, please give space for others behind or in front of you. Make sure those in back can see the model.

Please observe the easel arrangement in the storage closet and replace your easel in the same manner.

Please make every effort to wipe down your easel when leaving and make sure around your easel is clear of charcoal or pastel dust.

Please put back your easel if leaving early. Use the 10-minute rest to clean up.

Please to not use turpentine for oils.

Please do all aerosol spraying outdoors, front or back yard.

If there is a change in the models pose, please inform the monitor instead of the model.

There will be two snacks available each week. The person who brought them will take these home, only coffee and tea will remain in the cabinet.

Please try to come in early to find an optimal spot to work in to reduce disturbance during workshop time.

Anyone who needs a locker or has fees for a locker should talk to Chuck Tarr, usually here on Tuesdays, or contact the office at 215-545-9298.

Thank you for your efforts to make workshops as efficient and rewarding as possible!

Gallery hours: By appointment: Wednesday, Friday, Saturday: 1 PM to 5 PM

October 2022

Opportunities/Notices

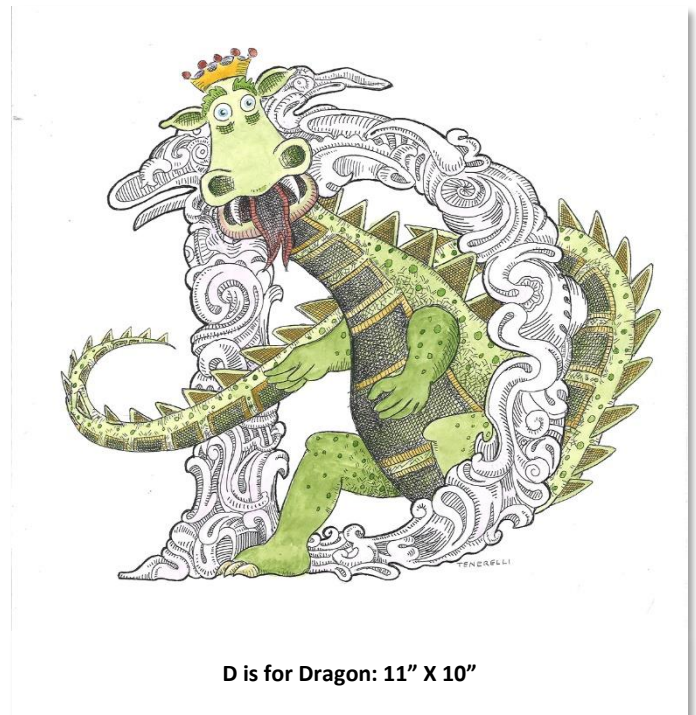
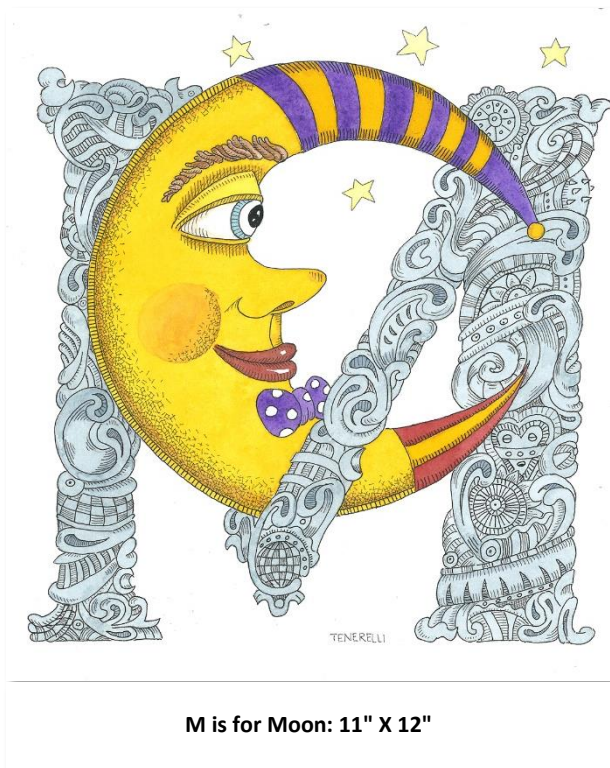
As a courtesy to our non-PSC-member friends, in support of the Philadelphia artist community, we publish your notices, etc., free of charge. However, contributions to the PSC are always welcome. And we will gladly consider your application for membership

[Contribute to the Sketch Club Here](#) [Apply for PSC Membership Here](#)

Joe Tenerelli

Original Art: Rapidograph Ink and Watercolor

Contact Information is available at PSC office



Gallery hours: By appointment: Wednesday, Friday, Saturday: 1 PM to 5 PM

October 2022

Opportunities/Notices

Pamela Scribner



Sailing at the shore - Colored Pencil 11 x 14



Piazza At San Marco - pen and ink 32w x 24L



Torre Castle - pen and ink 20 x 28

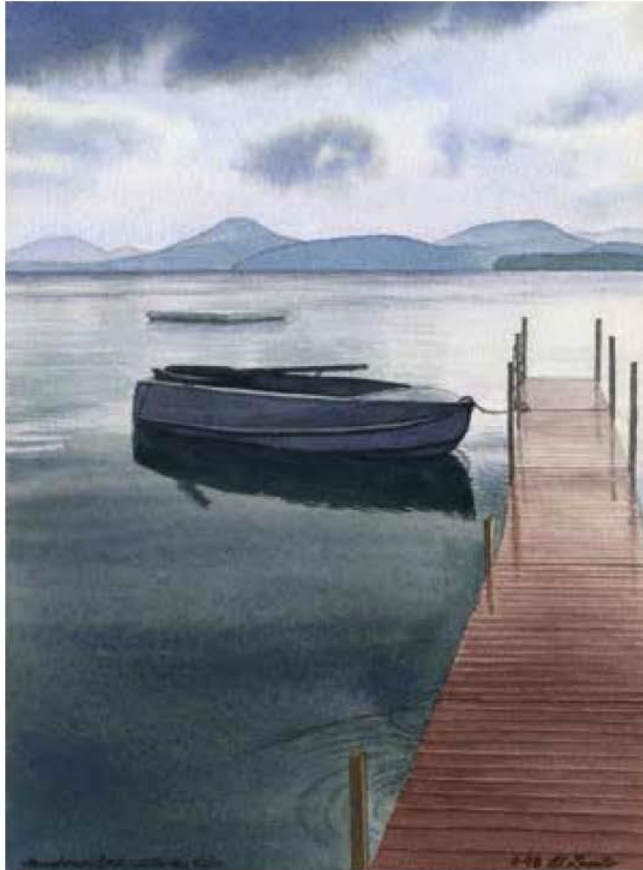
Gallery hours: By appointment: Wednesday, Friday, Saturday: 1 PM to 5 PM

October 2022

Opportunities/Notices

SOLO EXHIBIT

ALPHONSO LASSITER



"Longhouse Dock: After the Rain," watercolor

SEPT. 6–DEC. 22, 2022

**Lieberman Gallery
Settlement Music School
(Germantown Branch)**



RECEPTION:

SAT., SEPT. 10 • 2–5 P.M.

6128 Germantown Ave.
(between Tulpehocken and Herman Streets)
Philadelphia, PA 19144 • 215-320-2610

Free parking lot entrance is directly opposite Pastorius St.

GALLERY AND MUSIC SCHOOL HOURS:

Mon.–Thurs.: 10 a.m.–9 p.m.

Sats: 8:30 a.m.–4 p.m.

Masks are required in the building

The Lieberman Gallery is a partnership with the Allens Lane Art Center.

Tax deductible contributions to the school can be made at
<https://settlementmusic.org/give-now>

For more information: alphonso_lassiter@yahoo.com

Gallery hours: By appointment: Wednesday, Friday, Saturday: 1 PM to 5 PM

October 2022

Opportunities/Notices

SFA Gallery will host guest artist **Léni Paquet-Morante** October 1-30, 2022. Paquet-Morante is a Hamilton, NJ based painter and sculptor. Her contemporary interpretations of shallow water within the landscape include work outdoors and interpretive paintings and sculpture within the studio. Recent paintings on canvas and works on paper will be on view Thursday-Sunday, Noon-6pm and by appointment. Instagram @lenimakespaintings

SFA Gallery

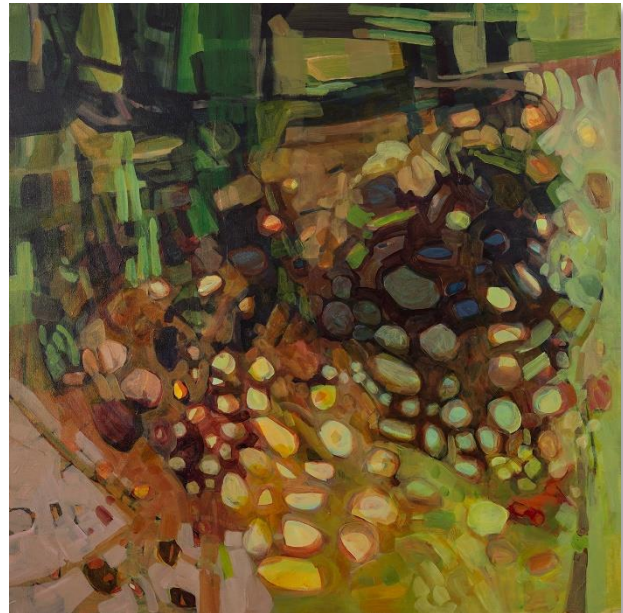
10 Bridge St

Frenchtown, NJ 08825

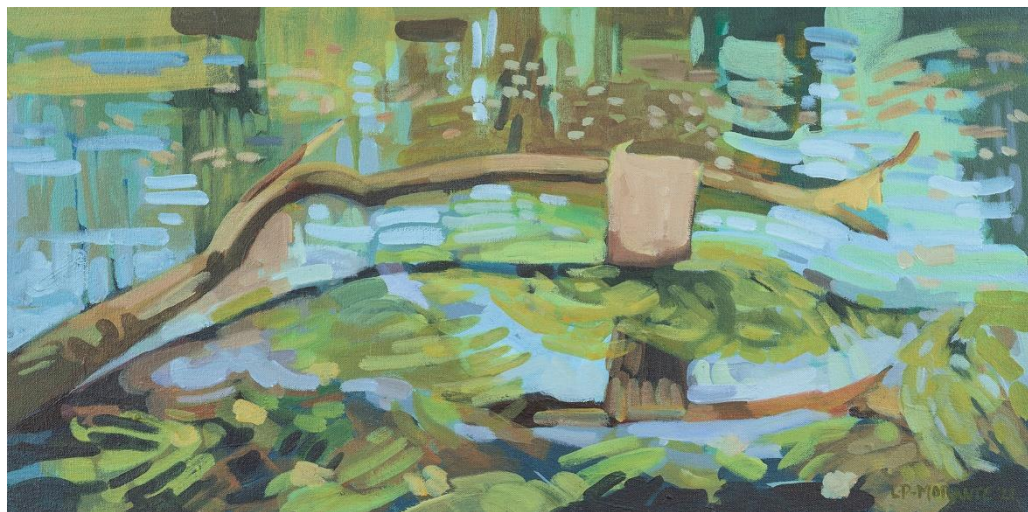
The artist can be reached at 609-610-3631 and moranteartslc@yahoo.com



Composed Shallow with Tree Moss" 2022, 18x24", ink on Arches hot press paper



Pebbled Shallow" 2022, 48x48" ink and acrylic on canvas



Baldwin's Creek, Flood Debris" 2021, 14x28", acrylic on canvas

Membership

Stay in touch with current Sketch Club Members

Don't let sheltering in place prevent you from staying in touch with your Sketch Club friends and colleagues. Sketch Club members can access contact information for all current members. Go to the members only page at: <http://sketchclub.org/members-only-2/>. After you log-in with the password sent to you in your acceptance email you can click on the Membership Directory link to access members contact information. Non-Sketch Club friends can find a listing of current members along with their websites if they have one at: <http://sketchclub.org/sample-page/current-members-contact-list/>:

Not a PSC Member?: Join Now!

If you're reading this edition of the Portfolio and you're not a member of the PSC, you should consider joining the more than 200 other Philadelphia area artists who have. The PSC is one of the most active visual art venues serving center city Philadelphia. The PSC is a hands-on organization that offers its members the opportunity to participate in all aspects of creating and presenting work to the public. It presents over 20 scheduled group and solo exhibitions annually and offers a wide range of daily workshops. [Get info and an application here.](#)

If you are a member of the PSC, please feel free to share the Portfolio with your artist friends and encourage them to become members.

Membership Renewal

You can check the status of your membership by going to the Current Members page on the PSC web-site: <http://sketchclub.org/sample-page/memberspace/>. All current members are listed. An asterisk (*) means that the membership has expired but is within the 60-day grace period for renewal. Names in red are active links to the individual's web site.

Renew Now! <http://sketchclub.org/annual-dues-payment/>

If you have any questions about your membership, please don't hesitate to contact us at membership@sketchclub.org or call the office: 215-545-9298.

Support the Sketch Club

Contribute

Please consider making your tax-deductible contribution now. These funds will be put to good use providing enhanced services to our members and friends.

Membership dues cover only a small portion of the PSC's operating expenses. Competition for funding for arts organizations like the Sketch Club is increasingly competitive and total funding for the arts is shrinking. Your additional support will keep the PSC an active support for visual artists in the Metropolitan Philadelphia area. The Philadelphia Sketch Club is an IRS designated 501(c) (3) non-profit organization.

You can call the office at 215-545-9298, mail checks to the Sketch Club or visit the Contribute page of our Website.

Visit our **Contribute** page of our website to give online at:

<http://sketchclub.org/support-us/>

You can also support the PSC on an ongoing basis when you shop on Amazon. Go to:

<http://smile.amazon.com/> and enter the Philadelphia Sketch Club in the Pick your own charitable organization box.

Your support makes it possible for the PSC to continue providing ongoing daily workshops and numerous annual gallery exhibitions.

Like, Link & Share

If you're not following the Philadelphia Sketch Club on Facebook re-tweeting Sketch Club tweets yet, it's time that you did. We have well over 2000 Facebook followers. Get the word out about the Sketch Club. Please click the like button and share your comments and invite your friends to like our page.

Follow @PhilaSketchClub on Twitter, we have almost 400 followers. Please click the heart button and re-tweet our announcements.

Include links on your website, blogs and social media to The Philadelphia Sketch Club to increase traction across social media platforms.

Follow us on Facebook, Twitter and Instagram now!



Classifieds



Your Ad Here... Have something to sell? Looking for something?
Contact portfolio@sketchclub to arrange for posting.

Classifieds

Picture Frame Sale, and framing equipment for sale. Contact Ed Ward at ward35@comcast.net. Here is an opportunity for local artists to save money on custom picture framing. We are currently in the process of down sizing and can offer framing discounts if you are willing to choose moldings from our existing inventory. Custom framing is available at \$5 a linear foot. Linear molding can be cut to your size. You can assemble your own frame, or have it assembled for \$15 each. Framing instruction is available at \$25hr.

Attached is a list of assembled frames with and without glass for sale. Glass and custom mat work are also available. Condition of frames is noted, if a touch up is required, price has been further discounted. Touch up can be easily accomplished with fine sand paper and spray paint. At the bottom of the list you will find a large paper cutter, matting equipment, an indoor-outdoor art display and litho film reference images of various subjects.

Picture Framing Sale, framing equipment for sale. Contact Ed Ward at ward35@comcast.net

Here is an opportunity for local artists to save money on custom picture framing. Many of you may know Athanasia and Edward Ward from our art work. We also have over 40 years experience in custom framing. We had a store front gallery and continue to work from our home under the name of A&A Art. We are currently in the process of down sizing and can offer framing discounts if you are willing to choose moldings from our existing inventory. Custom framing is available at \$5 a linear foot. When our inventory is gone, it will not be replaced locally. Linear molding can be cut to your size. You can assemble your own frame, or have it assembled for \$15 each. Framing instruction is available at \$25hr.

Below is a list of assembled frames with and without glass for sale. Glass and custom mat work are also available. Condition of frames is noted, if a touch up is required, price has been further discounted. Touch up can be easily accomplished with fine sand paper and spray paint.

Metal

New in package, just requires screwdriver for assembly. Hardware and clips included for securing work.

Brushed metal sides, smooth polished top.

<u>Dark copper</u>	Three	8 x 10"	\$5 each	+glass add \$5 each
		11 x 14"	\$6	+glass add \$5
		8 X 8"	\$5	+glass add \$4
<u>Pewter</u>	Three	11 x 14"	\$6	+glass add \$5
		11 x 14"	\$6 each	+glass add \$5 each
		8 x 10"	\$5 each	+glass add \$5 each
<u>Gold</u>	Two	8 X 8"	\$5	+glass add \$4
		16 x20"	\$10	+glass add \$8
		16 x20"	\$10	+glass add \$8
<u>Silver</u>		11 x14"	\$6	+glass add \$5
		11 x14"	\$6	+glass add \$5
		9 x 12"	\$6	+glass add \$5
<u>Black</u>		8 x 10"	\$5	+glass add \$5

Used Metal frames

<u>Gold</u>	18 X 18"	\$8	+glass add \$6
<u>Silver</u>	16 x20"	\$10	+glass add \$8

Wood

Measurements are inside opening.

Two 8 1/2 x 11 raw oak	\$5 each	+glass add \$4 each
Black 1" wide 12 x 16" with glass needs touch up	\$5	
Nice Art Deco style brown and black 1 1/2" wide 14 x 18	\$10	+glass add \$5
Green lacquer Nure 11 x 14" with glass needs touch up		
Two 11 x 14" 1" wide oak with glass	\$7 each	
Two 14 x 18" 1 1/2" wide oak with glass	\$10 each	
Nice 10 x 16" 2" wide black and gold	\$12	+glass add \$6
Raw oak 16 x 20" 1" wide	\$10	+glass add \$8
Unstained wood 12 x 17" 1" wide	\$10	+glass add \$8
Oak 13 x 14" 1 1/2" wide	\$10	+glass add \$8
Three Oak 11 x 14" 1 1/2" deep with glass	\$10 each	

Classifieds

Oak Shadow Box 16 x 20" 2" deep with glass	\$25	
Oak 8 3/4" x 15 3/4" 2 1/2" wide 1" deep	\$10	+glass add \$5
Silver leaf, carved corners 12 x 16" 1 1/2" wide narrow rabbit	\$12	+glass add \$6
Square profile 1" wide black 16 x 20" needs touch up	\$10	+glass add \$8
Black Décor 1/2 inch wide 18 1/2 x 14 1/2"	\$14	+glass add \$8
Four 2" wide black 11 x 14" Michael's photo frames with glass, frames need to be refinished \$5 each		
Old Oak 12 x 16"	\$10	+glass add \$5
Gold 1" wide 6 3/4 x 28" with for window mat, needs touch up	\$15	
Oak 3/4" wide 4 x 13" with glass	\$15	
White Oak 1 1/2" wide 8 x 10" narrow rabbit	\$8	+glass add \$5
Oak finish 3/4" wide 8 x 10"	\$8	+glass add \$5
9 x 12" 2" wide, 1" deep ornate antique frame with no lip for glass	\$10	
27 x 33" 1" wide Speckled black on brown with grey accent lines, glass	\$20	
30 x 35" 1 1/2" wide 1 1/2" deep square profile dark oak	\$25	+glass add \$10
Two antique carved frames need new gold leafing 3 1/4" wide inside wooden liner approx. 20 x 26" with antique glass	\$40 each	
20 x 24 1/2" Black square 1 1/2" wide, modern brown lanyard weave design on top	\$25	+glass add \$10
Silver Leaf modern bamboo 20 1/2 x 24 1/2" 1 1/4" wide	\$25	+glass add \$10
Walnut 15 x 30" 3" wide, linen liner, octagonal corners, needs cleaning and touch up	\$25	+glass add \$10
Gold 15 x 30" 3" wide, linen liner, octagonal corners, needs cleaning and touch up	\$25	+glass add \$10
25 x 29" 2" wide distressed brushed dark beach wood needs touch up	\$25	+glass add \$10
24 x 30" 3" wide 50's style carved wood frame; stripped, ready for finishing and leafing	\$30	
Antique 19th century 14 x 26" 4" wide, relief work needs refinishing	\$20	
Décor silver leaf 14 1/2 x 26 1/2" 1 1/2" wide	\$18	+glass add \$10
White Linen liner 17 x 19" fits 19 5/8" x 21 5/8" frame	\$10	
Gold Leaf Décor 20 x 24" 1 1/4" wide with black accent lines	\$20	+glass add \$10

Framing equipment for sale:

C&H Oval Master mat/glass cutter. Manual table top model 34" X 44" X 14" High. Used, with accessories and manual.	\$300
Logan Simplex Model 760, 60" tabletop mat cutter	\$200
Ingento 32" Paper cutter	\$200

Art Display

Art display for in door, or out door use. Custom made with four 4' X 8' wood framed white pegboard panels that assemble with supports for a cloth roof. Attached rear storage space 8' long 4' high 2' deep with hinged access doors.	\$300
---	-------

Reference Image Library

B & W Litho film negatives. Copy right free images of various subjects. Images are either clear on a black background or black on a clear background. Used to make printing plates or silk screens. Can be used on a light table to create new compositions. \$5 each



Gallery hours: By appointment: Wednesday, Friday, Saturday: 1 PM to 5 PM

October 2022

The Portfolio: The newsletter of the Philadelphia Sketch Club is published monthly. Editor, technical support, and webmaster: Ken Weiner. Send your member news, announcements and corrections to portfolio@sketchclub.org. The due date for all materials is one week before the end of the month. Back issues of the Portfolio are available at: <http://sketchclub.org/portfolio-archive/>

Thanks to PSC member volunteer **Ken Weiner** for his ongoing support of Sketch Club technology and communications functions.

The Philadelphia Sketch Club

235 S Camac Street
Philadelphia, PA 19107
(215) 545-9298
<http://sketchclub.org/>
gallerymanager@sketchclub.org
info@sketchclub.org

Gallery Manager: Kaylie Minzola

Officers:

- President: Richard Harrington
- Vice President: Kenneth Weiner
- Secretary: Elise Anzini
- Treasurer: William Patterson

Board of Directors

- Jacqueline Barnett
- Renard Edwards
- Stephen Iwanczuk
- Edward Pluciennik
- Charles F. Tarr
- Gail Williams