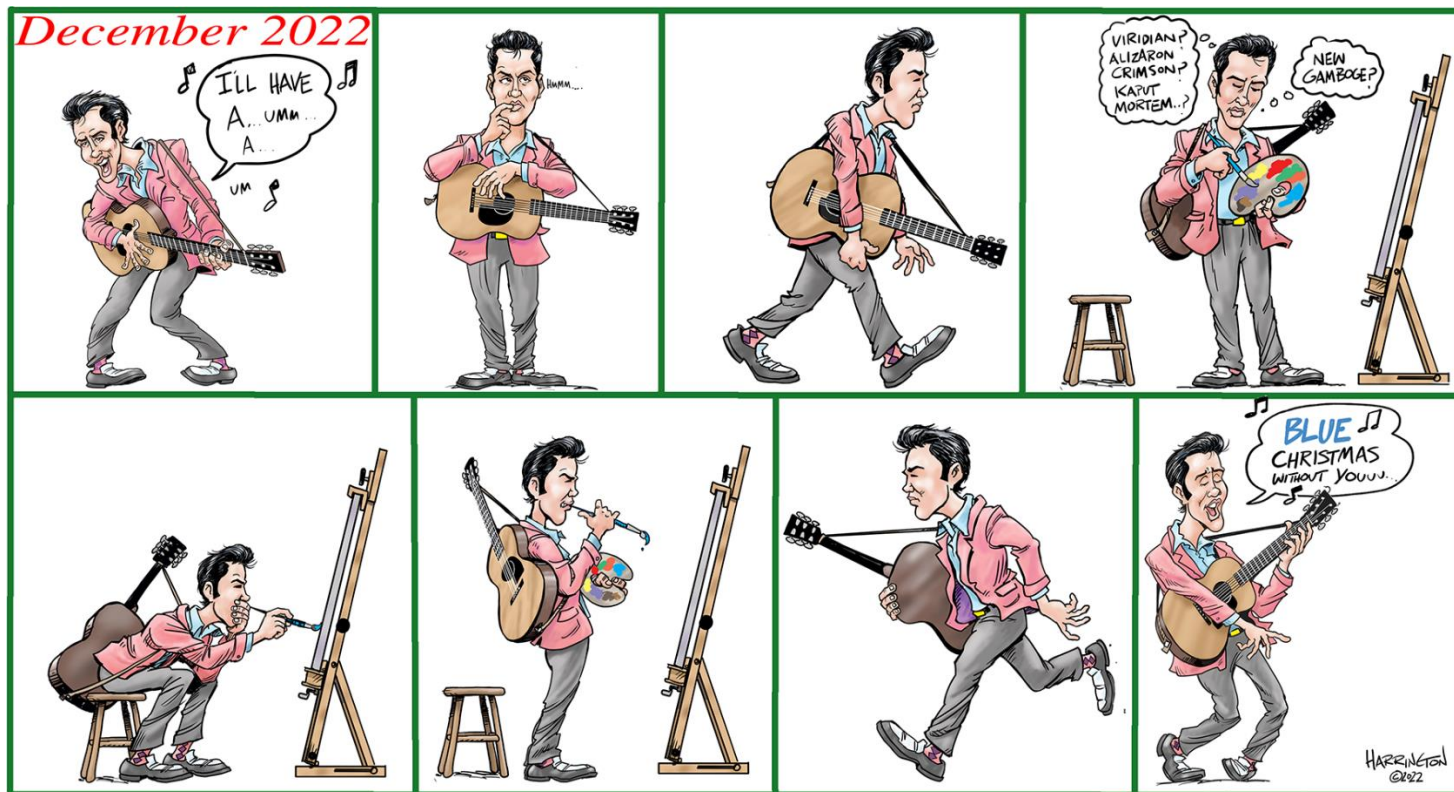


Gallery hours: By appointment: Wednesday, Friday, Saturday: 1 PM to 5 PM

December 2022



Richard Harrington

## This Month's Portfolio

162 <sup>nd</sup> Anniversary Gala	2
Sketch Club Special Events	7
Volunteer	9
Sketch Club Critique Group	11
Main Gallery Events	13
Stewart Gallery Events	13
Sketch Club Open Workshop Schedule	19
Opportunities/Notices	21
<i>Lamentations</i> Paintings by Jennifer Baker	24
Membership	25
Support the Sketch Club	26
Classifieds	26

Send your member news, announcements, and corrections to: [portfolio@sketchclub.org](mailto:portfolio@sketchclub.org). The deadline for ALL submissions is 1-week before the end of the month.

Reminder: It's never too late. You can always renew your membership

You may pay online at <http://sketchclub.org/annual-dues-payment/> or mail your check to:

The Philadelphia Sketch Club

235 S. Camac St.

Philadelphia, PA 19107

For questions please contact the Gallery Manager at 215-545-9298 or email:

[gallerymanager@sketchclub.org](mailto:gallerymanager@sketchclub.org)

Late Breaking News – See items that were submitted after the publication date. Go to:

<http://sketchclub.org/late-breaking-news/>

The PSC general email is: [info@sketchclub](mailto:info@sketchclub)

## 162<sup>nd</sup> Anniversary Gala

### **Update:** PHILADELPHIA SKETCH CLUB HONORS JOHN ENNIS, JANE GOLDEN AND JAMES TOOGOOD



2022 Honorees (from left) John Ennis, Jane Golden, & James

At its spirited and well-attended 162<sup>nd</sup> Anniversary Gala held on October 22, 2022, the Philadelphia Sketch Club awarded Philadelphia Sketch Club Medals to John Ennis, Jane Golden and James Toogood in recognition of their creativity and achievements in the visual arts. The accomplishments of these artists have had a significant impact both nationally and internationally. Here are brief biographies that note their accomplishments.

**John Ennis** is a nationally known artist whose recent awards include First Place in the Portrait Society of America's Self-Portrait Competition and the Patron's Award in Phillips' Mill 77<sup>th</sup> Annual Juried Exhibition. John earned his Bachelor of Fine Arts from Maryland Institute and studied at the Art Students League of New York. He began his career illustrating for book publishers and has over a thousand book cover illustrations to his credit. Devoting himself to the fine arts for some time, John has paintings in many public, corporate and private collections.

Jane Golden has been the driving force of Mural Arts Philadelphia since its inception in 1984, overseeing its growth from a small city agency into the nation's largest public art program and a global model for transforming public space and community through art. Under Golden's direction, Mural Arts has created over 4,000 works of public art through innovative collaborations with community-based organizations, city agencies, nonprofit organizations, schools, the private sector, and philanthropies. Reimagining the intersection of art and public space to address societal challenges, she has developed groundbreaking programs that transform practice and policies related to youth education, restorative justice, environmental

## 162<sup>nd</sup> Anniversary Gala

issues and behavioral health. Golden has overseen a series of increasingly complex, ambitious, and award-winning public art projects, and launched the knowledge-sharing Mural Arts Institute in 2017 to help guide best-practices across the globe. Sought after nationally and internationally as an expert on urban transformation through art, Golden has received numerous awards for her work, including the Eisenhower Exchange Fellowship Award, the Philadelphia Award, the Hepburn Medal from the Katharine Houghton Hepburn Center at Bryn Mawr College, and Philadelphia Magazine's Trailblazer Award. In 2018, she received the Anne d'Harnoncourt Award for Artistic Excellence from the Arts + Business Council of Greater Philadelphia, and the Dare to Understand Award from the Interfaith Center of Greater Philadelphia. She is an adjunct professor at the University of Pennsylvania, and serves on the Mayor's Cultural Advisory Council, the Penn Museum Advisory Committee, and the board of directors of The Heliotrope Foundation.

**James Toogood** is a painter working primarily in watercolor and works on paper. He studied painting at the Pennsylvania Academy of the Fine Arts, PAFA. His work has been the subject of over forty solo exhibitions with galleries including Rosenfeld Gallery in Philadelphia, Windjammer Gallery and Desmond Fountain Gallery, both in Hamilton, Bermuda. His work has appeared in museum solo exhibitions at the Masterworks Museum of Bermuda Art in Hamilton, Bermuda, The Woodmere Art Museum and the Pennsylvania Academy of the Fine Arts both in Philadelphia. Other exhibitions include the National Academy of Design, the Butler Institute of American Art, the Bermuda National Gallery, the Coos Art Museum, the Taiwan International Watercolor Society and the Shenzhen International Watercolour Biennial, Shenzhen, China. He is an elected member of the American Watercolor Society, the National Watercolor Society, Allied Artists of America and the Philadelphia Sketch Club. His work has earned numerous awards, including the 2010 Allied Artists of America Gold Medal of Honor. His work appears in such public collections as the Woodmere Art Museum, the Masterworks Museum, the Naples Museum of Art and the Noyes Museum of Art. Toogood regularly writes articles on painting for numerous publications and has contributed to over two dozen books about painting. He is the author of the book *Incredible Light and Texture in Watercolor*. Toogood is an Instructor at PAFA and teaches In-Depth Watercolor in the PAFA Continuing Education/Certificate programs. Toogood also taught at the National Academy of Design in New York City.

**The PSC Medal** was sculpted by PSC member and PAFA graduate Joe Winter, who fashioned it after the PSC corporate seal. The corporate seal was originally designed in 1889 by Henry T. Cariss. Presentation of PSC medals to recognize the achievements of artists is now an annual event tied to its fundraising gala. Recipients of the Philadelphia Sketch Club Medal have included Tony Auth, Jan Baltzell, Robert Beck, Moe Brooker, Diane Burko, Patrick Connors, Vincent Desiderio, Paul DuSold, John Ennis, Cindi Ettinger, Alan Fetterman, Jane Goldmen, Eileen Goodman, Al Gury, Garth Herrick, Alex Kanevsky, Christine Lafuente, Elizabeth Osborne, Barbara Rosenfeld, Richard Rosenfeld, Bill Scott, Zoe Strauss, James Toogood, Signe Wilkinson, Jamie Wyeth, Robert Venturi, Denise Scott Brown, Doris Brandes and Edmund Bacon.



Garth Herrick showing his Philadelphia Sketch Club Medal

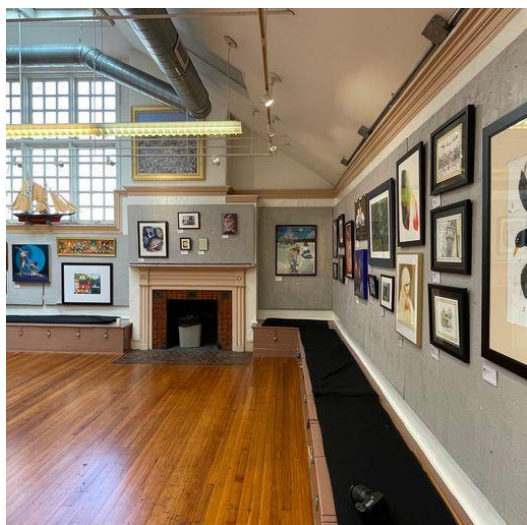


## 162<sup>nd</sup> Anniversary Gala

### Philadelphia Sketch Club, a Short History -

On November 20, 1860, six “Bohemian” students from the Pennsylvania Academy of the Fine Arts; George F. Bensell and his brother Edmund B. Bensell; Edward J. McIlhenny; Henry C. Bispham; John L. Gihon; and Robert Wylie met at 125 South 11<sup>th</sup> Street to form a “sketching club.” They sought illustration and design opportunities not available at the Academy. Within months, other talented artists

were  
added  
to the



Gallery Hosting Phillustration Exhibition



Historic Marker on South Camac Street

membership including Stephen J. Ferris, a celebrated etcher, and Thomas Moran, a great landscape artist. Thomas Eakins taught life workshops at the Sketch Club and used that experience to gain a position as an instructor at PAFA. By 1894 the Sketch Club had 400 active

members, including many instructors at the Academy. Thomas P. Anshutz, who succeeded Eakins at the Academy, was President of the Sketch Club from 1910 until his untimely death in 1912. N. C. Wyeth had his first solo exhibition at the Sketch Club in 1912. When World War I forced the world-famous illustrator and etcher Joseph Pennell to leave Europe, he returned to Philadelphia and served as President of the Club in 1921. As the years passed, the roll call of distinguished artists, past and present, continued to grow and have included A. B. Frost, Howard Chandler Christy, Walter Baum, Edward Redfield, Daniel Garber, Hugh Breckenridge, Fred Wagner and Louis Kahn.



Ghosts from Parties Past...

Gallery hours: By appointment: Wednesday, Friday, Saturday: 1 PM to 5 PM

December 2022

## Photos from the 162<sup>nd</sup> Anniversary Gala



Honorees (from left) John Ennis, Jane Golden, & James Toogood with  
Prior Winners Signe Wilkinson & Garth Herrick



President Rich Harrington and Gallery Manager Kaylie  
Minzola encouraging the auction crowd



David Weiss, Senior Vice President of Freeman's,  
conducting Live Auction



Michael Fernandez and part of the crowd



Gallery hours: By appointment: Wednesday, Friday, Saturday: 1 PM to 5 PM

December 2022

## 162<sup>nd</sup> Anniversary Gala



**Bill Patterson, Gala Chairman, participating in wine tasting**



**More Auction Action**



**President Rich Harrington displaying Artwork**



**President Rich Harrington preparing to play with the Sketchnotes**

Gallery hours: By appointment: Wednesday, Friday, Saturday: 1 PM to 5 PM

December 2022

## Sketch Club Special Events

### Things to See at the Philadelphia Sketch Club



Walter E. Baum, Corner House, stone lithograph

There are several groups of artworks to see at the Philadelphia Sketch Club. A good time to do that would be when you are attending one of our major exhibitions in our main gallery. Exhibitions and their times are listed in our website at [sketchclub.org](http://sketchclub.org). Currently in the downstairs Stewart Gallery there is an exhibition of ten artworks that will be auctioned off at the PSC's 162<sup>nd</sup> Anniversary Gala on October 22, 2022. Artists of these artworks are Moe Brooker, James Toogood, John Ennis, Henry C. Pitts, Domenic DiStefano, Anthony Michael Autorino, Cesare A. Ricciardi, Carl Weber, Doree Loschiavo and T. Norman Mansell. Another exhibition in the Stewart Gallery includes nine stone lithographs by Walter E. Baum (1884-1956). Baum was an important Pennsylvania impressionist

painter, educator, and art critic for the Philadelphia Bulletin. He was a member of the PSC from 1929 to 1956.

Complementing the Baum lithograph exhibition are two woodblock prints by Edward C. Warwick (1881-1973). Warwick was Dean of the Philadelphia College of Art (now The University of the Arts) and was a PSC member from 1909 to 1973.



Edward C. Warwick, Jumping Stags, wood block print



## Sketch Club Special Events

### Sketch Club On-Line Gallery: **Always Room for More Work!**

There's always room for more work: Submit Now!

The Sketch Club is hosting an on-going open gallery at: <http://sketchclub.org/sketch-club-open-gallery/>. This gallery is open to PSC members and non-members.

Submit up to 4 images of your work or of yourself working along with a very brief description to: [portfolio@sketchclub.org](mailto:portfolio@sketchclub.org).

Include for your work: Your name; Title; size; and medium.

For photos of yourself include: who you are and a brief description of the image.

### On-Line Resources

- The Sketch Club Critique Group: <https://www.facebook.com/groups/PSCCritique>
- The Sketch Club Open Gallery: <https://sketchclub.org/sketch-club-open-gallery/>
- The Sketch Club's web site: [sketchclub.org](http://sketchclub.org)
- Our Facebook page: <https://www.facebook.com/thesketchclub/>
- Instagram: <https://www.instagram.com/philadelphiasketch/>
- Twitter: <https://twitter.com/PhilaSketchClub>
- Members: Stay in touch with other PSC colleagues. For contact information, go to the members only page at: <http://sketchclub.org/members-only-2/>. See Stay in touch with current Sketch Club Members in the members section below for instructions.

**Non-Sketch Club friends can find a listing of current members names and business websites if they have one at:**

<http://sketchclub.org/sample-page/current-members-contact-list/>.

### Support the Sketch Club through Amazon Smile

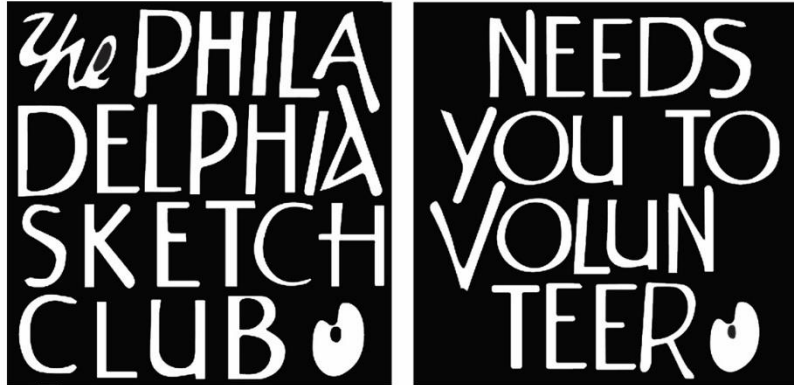
Make free donations to the Sketch Club anytime you shop at Amazon Smile. Remember that anyone who purchases through Amazon can have Amazon make a contribution to the Club for most every purchase you make. Just log in and go to: [smile.amazon.com](http://smile.amazon.com) -From there you can select the Philadelphia Sketch Club as your non-profit charity . Done. Then the Club receives a percentage of most every purchase you make. It is a painless way to contribute to the Club's welfare. Most purchases made on your mobile app and from Whole Foods qualify too! Go to [smile.amazon.com/about/](http://smile.amazon.com/about/) to learn more.



## Volunteer

### Be an Active Sketch Club Member; Volunteer!!

The Philadelphia Sketch Club is managed entirely by volunteers except for the gallery manager, housekeeping, and bookkeeper.



The PSC always needs volunteer members. Volunteering is one of the most important aspects of being a Sketch Club member and it is the one of the best ways to take advantage of the PSC. You'll be working with colleagues who share the same interests and helping the PSC provide unique services to the visual arts community. Sign up for an activity today.

Here are some of the activities that volunteers perform:

- Chair exhibitions
- Assist in hanging exhibitions
- Covering exhibition drop-offs and pick-ups
- Monitor workshops
- Assist with presentations
- Serve on the Board of Directors
- Serve as Key Circle volunteers
- Publish the Portfolio
- Manage the PSC web site
- Gallery coverage
- Graphics for Portfolio, PSC web site, social media
- Assist in every aspect of managing the club and providing member services

To get involved, contact us at: [info@sketchclub.org](mailto:info@sketchclub.org)

Gallery hours: By appointment: Wednesday, Friday, Saturday: 1 PM to 5 PM

December 2022

## Volunteer

**Volunteer: The PSC needs a Chairperson** to organize and manage upcoming Sketchclub Exhibitions. Contact our PSC Gallery Manager Kaylie Minzola at [gallerymanager@sketchclub.org](mailto:gallerymanager@sketchclub.org) for details if you are interested.

### **Volunteers Needed for Gallery Sitting:**

**Please contact the office [gallerymanager@sketchclub.org](mailto:gallerymanager@sketchclub.org), or call the office 215-545-9298 Wednesdays and Fridays 11-5pm. Your assistance would be greatly appreciated.**

For more information, please contact our Gallery Manager, Kaylie Minzola at:  
[gallerymanager@sketchclub.org](mailto:gallerymanager@sketchclub.org)



## Sketch Club Critique Group

### The Sketch Club Critique FaceBook Group

#### Join the Critique Facebook Group

Join your Club colleagues online at the "Philadelphia Sketch Club Critique"-- a Private group for Active PSC members only on Facebook.



Colleagues, please join in and contribute to your online art community. We all miss the camaraderie we enjoy at the Club house. The "Philadelphia Sketch Club Critique" is a chance to get together online until we can gather once more around the punch bowl and raise a toast, "to the Sketch Club, past, present and future."

#### Here's how it works:

- Active members go to the new "Philadelphia Sketch Club Critique" page and request access, which is available to all Club members in good standing.
- Once in post your work and watch as other members' post their artwork for critique.
- More details will be posted within the group including the option to be considered for a monthly "Highlights", a curated online gallery to be published on our external site/Instagram/Twitter channels.

This Facebook Group is private; this means that as Members submit their work others are invited to critique each other in a professional and respectful way.

#### Critique Group Links:

- You can find a link on the Sketch Club website: <https://sketchclub.org/>
- The Critique Group's Facebook Page: <https://www.facebook.com/groups/PSCCritique>
- The PSC's main FaceBook page: <https://www.facebook.com/thesketchclub>

## Sketch Club Critique Group

### Art related Internet News Articles

**National Geographic Article: These 18 Autochrome Photos Will Transport you to Another Era:** The method used to make these dreamy photographs resulted in a painting-like quality that not even today's best Instagram filters can replicate. <https://www.nationalgeographic.com/history/article/autochrome-photography-archive-vintage-history><https://thehustle.co/can-you-get-sued-for-using-a-meme/>

**From the Hustle:** Can you get sued for using a meme? <https://thehustle.co/can-you-get-sued-for-using-a-meme/>

**New venture:** Christie's, the prominent auction house, announced it's launched an in-house VC arm called Christie's Ventures, which will focus on art and crypto startups.

<https://www.wsj.com/articles/christies-venture-capital-nft-11657916141?st=lzm39fmeqhkiwu4&reflink=desktopwebshare> [permalink](#)

**Can a corporation "own" a color?**

<https://thehustle.co/can-a-corporation-trademark-a-color/>

**A Humorous take on Art:** The Blanton Museum of Art in Austin, Texas, challenged bakers to recreate any of its 21k works of art as cake. See the entries [here](#).

<https://www.smithsonianmag.com/arts-culture/this-museum-is-asking-people-to-remake-famous-artworks-with-cake-180980152/?>

<https://www.instagram.com/explore/tags/blantonbakeoff/>

**Philly Mural Arts program:** Philly has more than 4,000 murals—and counting

<https://www.nationalgeographic.com/travel/article/this-city-has-more-than-4000-murals?>

**Women in the arts:** The women who redefined color - BBC Culture

<https://www.bbc.com/culture/article/20220401-the-women-who-redefined-colour>

**In Memorium: Highlights of the QEII portrait exhibit:**

<https://news.artnet.com/art-world/30-portraits-of-queen-elizabeth-ii-332442>

### Tax Info for Artists

Sketch Club members might be interested in this summary article with 2022 tax information for freelancers.

-- Submitted by Don Gauger

<https://blog.freelancersunion.org/2022/01/11/whats-new-for-freelancers-in-tax-year-2022/>



Gallery hours: By appointment: Wednesday, Friday, Saturday: 1 PM to 5 PM

December 2022

## Main Gallery Events

**Gallery Hours: Wednesday, Friday, Saturday 1 to 5pm**

[See the Sketch Club Open Gallery](https://sketchclub.org/exhibition-schedule-2021-2/)  
<https://sketchclub.org/exhibition-schedule-2021-2/>  
[Important Dates for all PSC Activities](https://sketchclub.org/exhibition-schedule-2021-2/)

## Stewart Gallery Events



**Exhibition space in  
the Stewart Gallery  
is available for PSC  
Members!**

Reserve the gallery by  
contacting our  
Exhibition Coordinator:  
[exhibitions@sketchclub.org](mailto:exhibitions@sketchclub.org)

The space is \$150 for a  
month. Members can  
show once in the Stewart  
Gallery per year.

[See the Sketch Club Open Gallery](https://sketchclub.org/exhibition-schedule-2021-2/)  
<https://sketchclub.org/exhibition-schedule-2021-2/>  
[Important Dates for all PSC Activities](https://sketchclub.org/exhibition-schedule-2021-2/)

## Art Natters: Members News

## Visit the Sketch Club Online Gallery

Go to the Sketch Club's on-going open gallery to see recent updates with work by PSC members and friends:

<http://sketchclub.org/sketch-club-open-gallery/>.

Members and friends can submit up to 4 images. Send your submissions to:

[portfolio@sketchclub.org](mailto:portfolio@sketchclub.org).

Include for your work: Your name; Title; size; and medium.

For photos of yourself, include Who you are and a brief description of the image.



**Steganographic artwork by Don Gauger, "KNOWLEDGE IS POWER"**

Sketch Club member and Sketch Club Critique Group Monitor **Don Gauger** won first place and a gallery show at the National Cryptologic Museum.

The National Cryptologic Museum had an unusual art contest: design original artwork that contained a hidden message "Knowledge is Power." Hiding messages in art is also known as Steganography.

Don's artwork, with solution, is on display for six months. The museum is located in Annapolis Junction, MD. Photos of the museum's grand reopening reception are posted

[https://www.graylandstudio.com/an-occasional-journal/blog\\_posts/an-unusual-exhibition-opens-at-the-ncm](https://www.graylandstudio.com/an-occasional-journal/blog_posts/an-unusual-exhibition-opens-at-the-ncm)at: The solution will be posted in six months.



Gallery hours: By appointment: Wednesday, Friday, Saturday: 1 PM to 5 PM

December 2022

## Art Natters: Members News

From Sketch Club member **Nina Yocom**

*Singing the Blues*

5 x 7

Alcohol Ink on Paper

Wayne Art Center

Fall 2022 Members Juried  
Exhibition

October 16 - November 12

[www.wayneart.org](http://www.wayneart.org)



**Singing the Blues**

Sketch Club member **Pat Wilson-Schmid** has a painting in the Perkiomen Valley Art Center Show at the Hill School in Pottstown, PA. The show runs until Dec. 16<sup>th</sup>. With an opening reception Sunday, Nov. 6<sup>th</sup> from 2 to 4 PM.

## Art Natters: Members News

**Sketch Club member John R. Dorchester will have a one-person exhibition** at 919 North Market Street, Wilmington, DE 19801, starting October 2 and running through the end of December of 2022. There will be an opening on October 7 from 5-7PM. The exhibition space is on the ground floor of the 919 building, a grand, open space with soaring 20 foot ceilings. John's show follows the current exhibition from the Delaware Contemporary Art Institute. The exhibition will include approximately 25 landscape, figure and political paintings painted within the last six years.

John, a 1982 graduate of the Pennsylvania Academy of Fine Arts, made a living as a commercial filmmaker from 1994 through 2014, before returning to his roots as a painter and musician. Since then his work has garnered awards and been in exhibits across the country including the Philadelphia Sketch Club and the Salmagundi Club in New York City. He is represented by Carspecken-Scott Gallery in Wilmington DE.

For more information, please contact [john@johndorchester.net](mailto:john@johndorchester.net).



"Buttercup" 24" X 30" Oil on Linen ©John R. Dorchester

Gallery hours: By appointment: Wednesday, Friday, Saturday: 1 PM to 5 PM

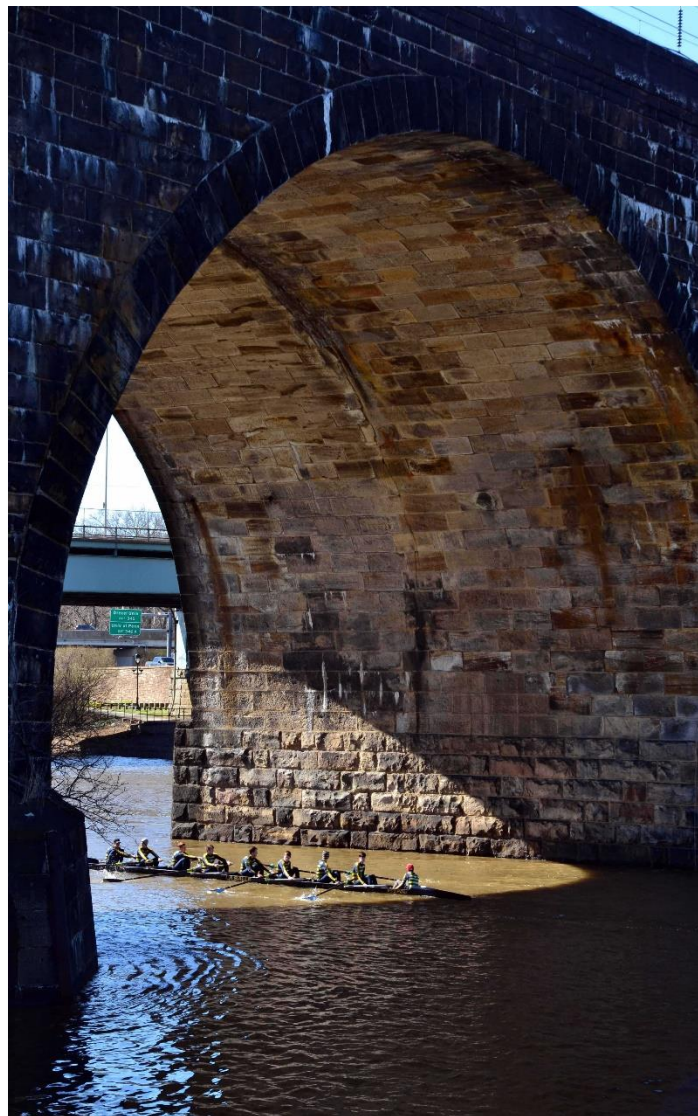
December 2022

## Art Natters: Members News

Photographer, **Melvin A. Chappell** a Sketch Club member, received The David Latin Williams Prize for Bontanical/Landscape Art at the Plastic Clubs 108th Annual Member's Medal Exhibition.

Chappell's photo, "Under the Bridge", was awarded the Prize by Patricia Ricci, Professor of Art, Elizabethtown College.

This show closed on May 31, 2022. But can still be viewed online: [www.plasticclub.org](http://www.plasticclub.org)



**Under the Bridge**



Gallery hours: By appointment: Wednesday, Friday, Saturday: 1 PM to 5 PM

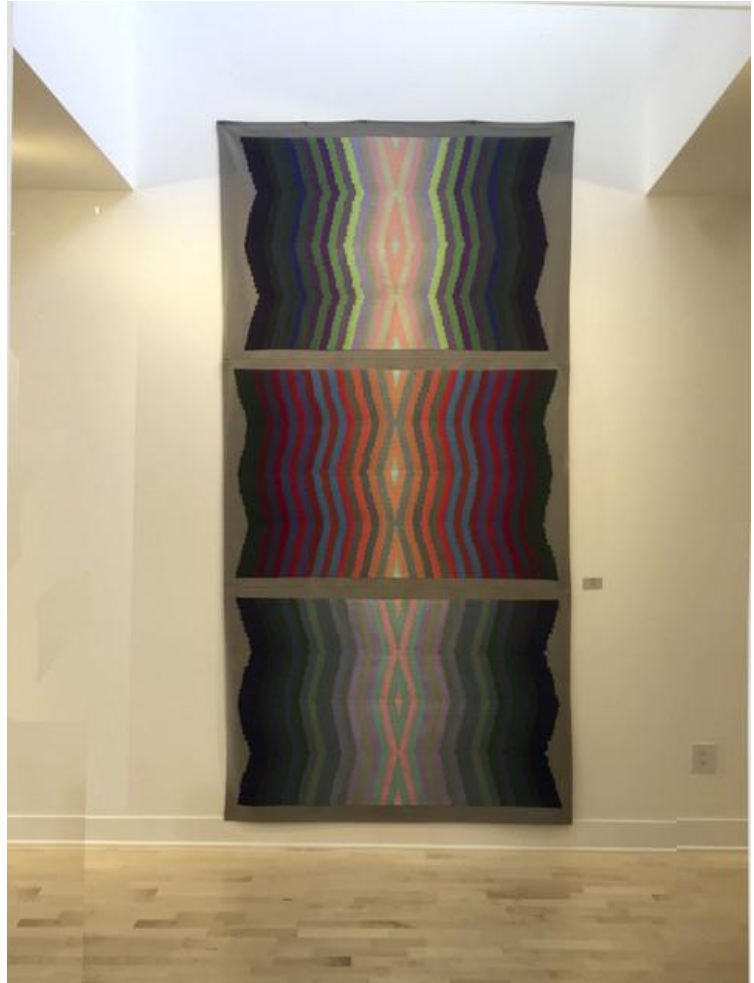
December 2022

## Art Natters: Members News

Sketch Club member **NANCY HERMAN's** STUDIO GALLERY, 109 NORTH ESSEX AVE IN NARBERTH, PA. One block from the Septa train station a 15 minute ride form 30th street.

NOW OPEN. Come one come all. Take in the color and the light. Find work in 3D.

Open most afternoons from 1:00 to 5:00. Call to be sure I'll be there. 215-779-2251



## Sketch Club Open Workshop Schedule

*Welcome Back!*

Sketchclub.org • (215) 545-9298 • 235 S Camac St, Philadelphia, PA 19107

*Workshops*

### Fees

\$10 Model Workshop sessions, \$9 for members  
\$6 for full time students

Model Tips are optional but appreciated

\*\*\*Bring your drawing and painting materials!\*\*\*



*Life Model*

Monday	6:30 pm - 9:30 pm Extended pose	Monitor: Emily Hirtle
Tuesday	12:00 pm - 3:00 pm Extended pose	Monitor: Jacqueline Barnett
Wednesday	6:30 pm - 9:30 pm Extended pose	Monitor: Valerie Lang
Saturday	9:30am- 12:30pm Extended pose	Monitor: Jacqueline Barnett

*Costumed Model*

Thursday	12:00pm-3:00pm Extended pose	Monitor: Bob Bohne
----------	---------------------------------	--------------------

Tables, chairs, and easels provided. Please bring your own supplies  
Vaccination required for entry

### Coming in 2022!

We are planning to add a Friday evening still life workshop to the schedule. Sketch Club member **Tom Kohlmann** will monitor.

Watch for emails or visit  
<https://sketchclub.org> for more details on the still life workshop and holiday cancellations.

The Sketch Club offers in person workshops in compliance with CDC guidelines.

All workshops are open to the public. There is no need to register before attending. You do NOT have to be a member of the Philadelphia Sketch Club to participate in the workshops. Our workshops are open to anyone who is interested in drawing, painting, or printmaking. All skill levels are welcome.

Please Note: Those who use oil paints should bring their own container(s) to remove used solvents. Odorless solvents only. See more important attendee information at: [Workshop Attendee Responsibilities](#)

Thank you to all the PSC members who donate their time and expertise to make these workshops available to PSC members and the Philadelphia art community.

## Sketch Club Open Workshop Schedule

### Workshop Attendee Responsibilities

During this period of returning to normal, we must remember to observe that some may choose be wearing masks and to respect a 6 foot distance.

Fees will be collected after the second pose. \$9 for non-members, \$8 for members, \$6 for full time students.

When setting up, please give space for others behind or in front of you. Make sure those in back can see the model.

Please observe the easel arrangement in the storage closet and replace your easel in the same manner.

Please make every effort to wipe down your easel when leaving and make sure around your easel is clear of charcoal or pastel dust.

Please put back your easel if leaving early. Use the 10-minute rest to clean up.

Please to not use turpentine for oils.

Please do all aerosol spraying outdoors, front or back yard.

If there is a change in the models pose, please inform the monitor instead of the model.

There will be two snacks available each week. The person who brought them will take these home, only coffee and tea will remain in the cabinet.

Please try to come in early to find an optimal spot to work in to reduce disturbance during workshop time.

Anyone who needs a locker or has fees for a locker should talk to Chuck Tarr, usually here on Tuesdays, or contact the office at 215-545-9298.

Thank you for your efforts to make workshops as efficient and rewarding as possible!



Gallery hours: By appointment: Wednesday, Friday, Saturday: 1 PM to 5 PM

December 2022

## Opportunities/Notices

As a courtesy to our non-PSC-member friends, in support of the Philadelphia artist community, we publish your notices, etc., free of charge. However, contributions to the PSC are always welcome. And we will gladly consider your application for membership

[Contribute to the Sketch Club Here](#)   [Apply for PSC Membership Here](#)

From **Diane Tomash**

The Atlantic City Arts Garage is located at 2200 Fairmount Ave, Atlantic City, NJ, 08401 the Members Exhibition dates: October 8, 2022 through January 22, 2023.

Clouds drift by as the light crosses the red roof.

Diane Tomash is part of the Artist Membership Exhibition at the Atlantic City Arts Garage of Stockton University.

Hours are 11:00am - 6:00 pm.  
Wednesday - Sunday.

S



"Amongst the Trees" Oil on Linen 11 x 16 inches. \$750.

Gallery hours: By appointment: Wednesday, Friday, Saturday: 1 PM to 5 PM

December 2022

## Opportunities/Notices

### CONTEMPORARY STILL LIFE CLASS AT THE CERULEAN ARTS GALLERY



**TAUGHT BY ELIZABETH HELLER, PHILADELPHIA PAINTER AND SCULPTOR**  
[www.https://Elizabethhellerart.com](https://Elizabethhellerart.com)

**SIX WEEKS, SATURDAYS, JANUARY 14 - FEBRUARY 18, 10AM - 1 PM.**

**LEARN A STEP-BY-STEP PROCESS AS YOU WORK DIRECTLY FROM A  
SERIES OF ENGAGING STILL LIFE ARRANGEMENTS AND DEVELOP YOUR  
OIL PAINTING SKILLS.**

**FOR MORE INFORMATION, MATERIALS LIST, AND CLASS SCHEDULE:**  
[@https://ceruleanarts.com/studio](https://ceruleanarts.com/studio)

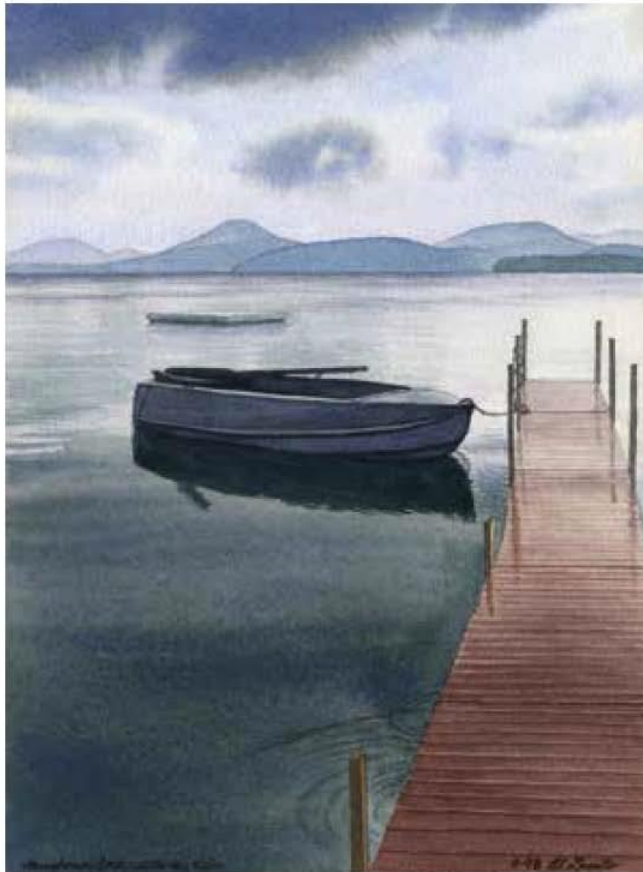
Gallery hours: By appointment: Wednesday, Friday, Saturday: 1 PM to 5 PM

December 2022

## Opportunities/Notices

### SOLO EXHIBIT

# ALPHONSO LASSITER



"Longhouse Dock: After the Rain," watercolor

**SEPT. 6–DEC. 22, 2022**

**Lieberman Gallery  
Settlement Music School  
(Germantown Branch)**



### RECEPTION:

**SAT., SEPT. 10 • 2–5 P.M.**

6128 Germantown Ave.  
(between Tulpehocken and Herman Streets)  
Philadelphia, PA 19144 • 215-320-2610

*Free parking lot entrance is directly opposite Pastorius St.*

### GALLERY AND MUSIC SCHOOL HOURS:

Mon.–Thurs.: 10 a.m.–9 p.m.

Sats: 8:30 a.m.–4 p.m.

**Masks are required in the building**

The Lieberman Gallery is a partnership with the Allens Lane Art Center.

Tax deductible contributions to the school can be made at  
<https://settlementmusic.org/give-now>

For more information: [alphonso\\_lassiter@yahoo.com](mailto:alphonso_lassiter@yahoo.com)



Gallery hours: By appointment: Wednesday, Friday, Saturday: 1 PM to 5 PM

December 2022

## Opportunities/Notices



Elegy oil on linen, 84" x 216", 2022

## Lamentations

### Paintings by [Jennifer Baker](#)

November 10 through December 4, 2022

**opening reception: November 10, 4 to 7 pm**

Artist talk: 4:30 pm

#### Patricia M. Nugent Gallery Rosemont College

The gallery is in Lawrence Hall on the campus of Rosemont College

1400 Montgomery Avenue, Rosemont, PA 19010

610-527-0200 ext 2357

<https://www.rosemont.edu>

#### Gallery Hours:

9:00 am to 8:00 pm

Monday - Friday and by appointment

## Membership

### Stay in touch with current Sketch Club Members

Don't let sheltering in place prevent you from staying in touch with your Sketch Club friends and colleagues. Sketch Club members can access contact information for all current members. Go to the members only page at: <http://sketchclub.org/members-only-2/>. After you log-in with the password sent to you in your acceptance email you can click on the Membership Directory link to access members contact information. Non-Sketch Club friends can find a listing of current members along with their websites if they have one at: <http://sketchclub.org/sample-page/current-members-contact-list/>:

### Not a PSC Member?: Join Now!

If you're reading this edition of the Portfolio and you're not a member of the PSC, you should consider joining the more than 200 other Philadelphia area artists who have. The PSC is one of the most active visual art venues serving center city Philadelphia. The PSC is a hands-on organization that offers its members the opportunity to participate in all aspects of creating and presenting work to the public. It presents over 20 scheduled group and solo exhibitions annually and offers a wide range of daily workshops. [Get info and an application here.](#)

If you are a member of the PSC, please feel free to share the Portfolio with your artist friends and encourage them to become members.

### Membership Renewal

You can check the status of your membership by going to the Current Members page on the PSC web-site: <http://sketchclub.org/sample-page/memberspace/>. All current members are listed. An asterisk (\*) means that the membership has expired but is within the 60-day grace period for renewal. Names in red are active links to the individual's web site.

Renew Now! <http://sketchclub.org/annual-dues-payment/>

If you have any questions about your membership, please don't hesitate to contact us at [membership@sketchclub.org](mailto:membership@sketchclub.org) or call the office: 215-545-9298.

## Support the Sketch Club

### Contribute

Please consider making your tax-deductible contribution now. These funds will be put to good use providing enhanced services to our members and friends.

Membership dues cover only a small portion of the PSC's operating expenses. Competition for funding for arts organizations like the Sketch Club is increasingly competitive and total funding for the arts is shrinking. Your additional support will keep the PSC an active support for visual artists in the Metropolitan Philadelphia area. The Philadelphia Sketch Club is an IRS designated 501(c) (3) non-profit organization.

You can call the office at 215-545-9298, mail checks to the Sketch Club or visit the Contribute page of our Website.

Visit our **Contribute** page of our website to give online at:

<http://sketchclub.org/support-us/>

You can also support the PSC on an ongoing basis when you shop on Amazon. Go to:

<http://smile.amazon.com/> and enter the Philadelphia Sketch Club in the Pick your own charitable organization box.

Your support makes it possible for the PSC to continue providing ongoing daily workshops and numerous annual gallery exhibitions.

### Like, Link & Share

If you're not following the Philadelphia Sketch Club on Facebook re-tweeting Sketch Club tweets yet, it's time that you did. We have well over 2000 Facebook followers. Get the word out about the Sketch Club. Please click the like button and share your comments and invite your friends to like our page.

Follow @PhilaSketchClub on Twitter, we have almost 400 followers. Please click the heart button and re-tweet our announcements.

Include links on your website, blogs and social media to The Philadelphia Sketch Club to increase traction across social media platforms.

Follow us on Facebook, Twitter and Instagram now!



## Classifieds



**Your Ad Here... Have something to sell? Looking for something?**  
Contact [portfolio@sketchclub](mailto:portfolio@sketchclub) to arrange for posting.



## Classifieds

Picture Frame Sale, and framing equipment for sale. Contact Ed Ward at [ward35@comcast.net](mailto:ward35@comcast.net). Here is an opportunity for local artists to save money on custom picture framing. We are currently in the process of down sizing and can offer framing discounts if you are willing to choose moldings from our existing inventory. Custom framing is available at \$5 a linear foot. Linear molding can be cut to your size. You can assemble your own frame, or have it assembled for \$15 each. Framing instruction is available at \$25hr.

Attached is a list of assembled frames with and without glass for sale. Glass and custom mat work are also available. Condition of frames is noted, if a touch up is required, price has been further discounted. Touch up can be easily accomplished with fine sand paper and spray paint. At the bottom of the list you will find a large paper cutter, matting equipment, an indoor-outdoor art display and litho film reference images of various subjects.

**Picture Framing Sale**, framing equipment for sale. Contact Ed Ward at [ward35@comcast.net](mailto:ward35@comcast.net)

Here is an opportunity for local artists to save money on custom picture framing. Many of you may know Athanasia and Edward Ward from our art work. We also have over 40 years experience in custom framing. We had a store front gallery and continue to work from our home under the name of A&A Art. We are currently in the process of down sizing and can offer framing discounts if you are willing to choose moldings from our existing inventory. Custom framing is available at \$5 a linear foot. When our inventory is gone, it will not be replaced locally. Linear molding can be cut to your size. You can assemble your own frame, or have it assembled for \$15 each. Framing instruction is available at \$25hr.

Below is a list of assembled frames with and without glass for sale. Glass and custom mat work are also available. Condition of frames is noted, if a touch up is required, price has been further discounted. Touch up can be easily accomplished with fine sand paper and spray paint.

### Metal

New in package, just requires screwdriver for assembly. Hardware and clips included for securing work.

Brushed metal sides, smooth polished top.

<u>Dark copper</u>	Three	8 x 10"	\$5 each	+glass add \$5 each
		11 x 14"	\$6	+glass add \$5
		8 X 8"	\$5	+glass add \$4
<u>Pewter</u>	Three	11 x 14"	\$6	+glass add \$5
		11 x 14"	\$6 each	+glass add \$5 each
		8 x 10"	\$5 each	+glass add \$5 each
<u>Gold</u>	Two	8 X 8"	\$5	+glass add \$4
		16 x20"	\$10	+glass add \$8
		16 x20"	\$10	+glass add \$8
<u>Silver</u>		11 x14"	\$6	+glass add \$5
		11 x14"	\$6	+glass add \$5
		9 x 12"	\$6	+glass add \$5
<u>Black</u>		8 x 10"	\$5	+glass add \$5

Used Metal frames

<u>Gold</u>	18 X 18"	\$8	+glass add \$6
<u>Silver</u>	16 x20"	\$10	+glass add \$8

### Wood

Measurements are inside opening.

Two 8 1/2 x 11 raw oak	\$5 each	+glass add \$4 each
Black 1" wide 12 x 16" with glass needs touch up	\$5	
Nice Art Deco style brown and black 1 1/2" wide 14 x 18	\$10	+glass add \$5
Green lacquer Nure 11 x 14" with glass needs touch up		
Two 11 x 14" 1" wide oak with glass	\$7 each	
Two 14 x 18" 1 1/2" wide oak with glass	\$10 each	
Nice 10 x 16" 2" wide black and gold	\$12	+glass add \$6
Raw oak 16 x 20" 1" wide	\$10	+glass add \$8
Unstained wood 12 x 17" 1" wide	\$10	+glass add \$8
Oak 13 x 14" 1 1/2" wide	\$10	+glass add \$8
Three Oak 11 x 14" 1 1/2" deep with glass	\$10 each	

## Classifieds

Oak Shadow Box 16 x 20" 2" deep with glass	\$25	
Oak 8 3/4" x 15 3/4" 2 1/2" wide 1" deep	\$10	+glass add \$5
Silver leaf, carved corners 12 x 16" 1 1/2" wide narrow rabbit	\$12	+glass add \$6
Square profile 1" wide black 16 x 20" needs touch up	\$10	+glass add \$8
Black Décor 1/2 inch wide 18 1/2 x 14 1/2"	\$14	+glass add \$8
Four 2" wide black 11 x 14" Michael's photo frames with glass, frames need to be refinished \$5 each		
Old Oak 12 x 16"	\$10	+glass add \$5
Gold 1" wide 6 3/4 x 28" with for window mat, needs touch up	\$15	
Oak 3/4" wide 4 x 13" with glass	\$15	
White Oak 1 1/2" wide 8 x 10" narrow rabbit	\$8	+glass add \$5
Oak finish 3/4" wide 8 x 10"	\$8	+glass add \$5
9 x 12" 2" wide, 1" deep ornate antique frame with no lip for glass	\$10	
27 x 33" 1" wide Speckled black on brown with grey accent lines, glass	\$20	
30 x 35" 1 1/2" wide 1 1/2" deep square profile dark oak	\$25	+glass add \$10
Two antique carved frames need new gold leafing 3 1/4" wide inside wooden liner approx. 20 x 26" with antique glass	\$40 each	
20 x 24 1/2" Black square 1 1/2" wide, modern brown lanyard weave design on top	\$25	+glass add \$10
Silver Leaf modern bamboo 20 1/2 x 24 1/2" 1 1/4" wide	\$25	+glass add \$10
Walnut 15 x 30" 3" wide, linen liner, octagonal corners, needs cleaning and touch up	\$25	+glass add \$10
Gold 15 x 30" 3" wide, linen liner, octagonal corners, needs cleaning and touch up	\$25	+glass add \$10
25 x 29" 2" wide distressed brushed dark beach wood needs touch up	\$25	+glass add \$10
24 x 30" 3" wide 50's style carved wood frame; stripped, ready for finishing and leafing	\$30	
Antique 19th century 14 x 26" 4" wide, relief work needs refinishing	\$20	
Décor silver leaf 14 1/2 x 26 1/2" 1 1/2" wide	\$18	+glass add \$10
White Linen liner 17 x 19" fits 19 5/8" x 21 5/8" frame	\$10	
Gold Leaf Décor 20 x 24" 1 1/4" wide with black accent lines	\$20	+glass add \$10

### Framing equipment for sale:

C&H Oval Master mat/glass cutter. Manual table top model 34" X 44" X 14" High. Used, with accessories and manual.	\$300
Logan Simplex Model 760, 60" tabletop mat cutter	\$200
Ingento 32" Paper cutter	\$200

### Art Display

Art display for in door, or out door use. Custom made with four 4' X 8' wood framed white pegboard panels that assemble with supports for a cloth roof. Attached rear storage space 8' long 4' high 2' deep with hinged access doors.	\$300
---	-------

### Reference Image Library

B & W Litho film negatives. Copy right free images of various subjects. Images are either clear on a black background or black on a clear background. Used to make printing plates or silk screens. Can be used on a light table to create new compositions. \$5 each



Gallery hours: By appointment: Wednesday, Friday, Saturday: 1 PM to 5 PM

December 2022

The Portfolio: The newsletter of the Philadelphia Sketch Club is published monthly. Editor, technical support, and webmaster: Ken Weiner. Send your member news, announcements and corrections to

[portfolio@sketchclub.org](mailto:portfolio@sketchclub.org). The due date for all materials is one week before the end of the month.

Back issues of the Portfolio are available at: <http://sketchclub.org/portfolio-archive/>

Thanks to PSC member volunteer **Ken Weiner** for his ongoing support of Sketch Club technology and communications functions.

#### **The Philadelphia Sketch Club**

235 S Camac Street

Philadelphia, PA 19107

(215) 545-9298

<http://sketchclub.org/>

[gallerymanager@sketchclub.org](mailto:gallerymanager@sketchclub.org)

[info@sketchclub.org](mailto:info@sketchclub.org)

Gallery Manager: Kaylie Minzola

#### **Officers:**

- President: Richard Harrington
- Vice President: Kenneth Weiner
- Secretary: Elise Anzini
- Treasurer: William Patterson

#### **Board of Directors**

- Jacqueline Barnett
- Renard Edwards
- Stephen Iwanczuk
- Edward Pluciennik
- Charles F. Tarr
- Gail Williams