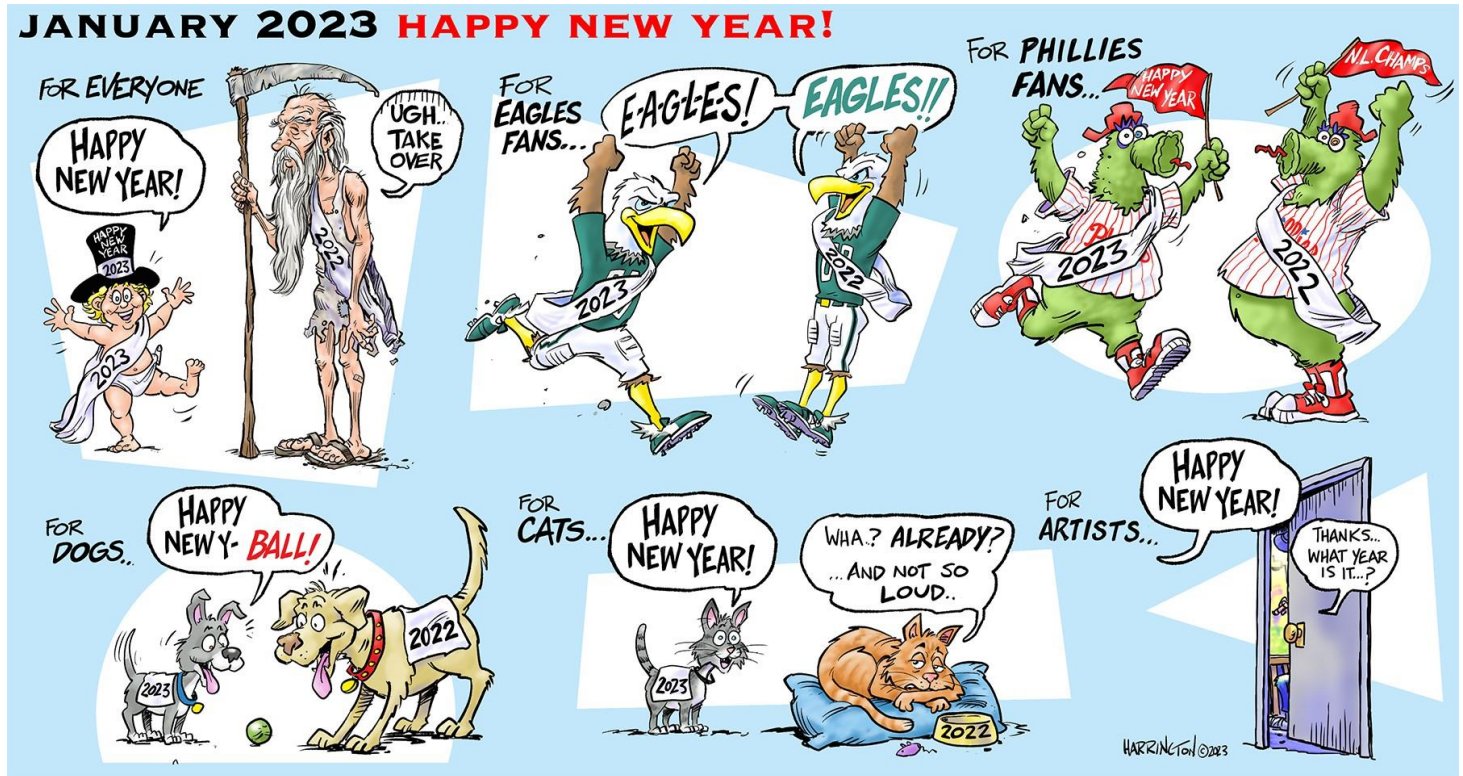


Gallery hours: By appointment: Wednesday, Friday, Saturday: 1 PM to 5 PM

January 2023

JANUARY 2023 HAPPY NEW YEAR!



Richard Harrington

This Month's Portfolio

In Memorium	2
Sketch Club Special Events	3
Volunteer	5
Sketch Club Critique Group	6
Main Gallery Events	8
Stewart Gallery Events	11
Sketch Club Open Workshop Schedule	19
Opportunities/Notices	20
Membership	25
Support the Sketch Club	25
Classifieds	26

Send your member news, announcements, and corrections to: portfolio@sketchclub.org. The deadline for ALL submissions is 1-week before the end of the month.

Reminder: It's never too late. You can always renew your membership

You may pay online at <http://sketchclub.org/annual-dues-payment/> or mail your check to:

The Philadelphia Sketch Club
235 S. Camac St.

Philadelphia, PA 19107

For questions please contact the Gallery Manager at 215-545-9298 or email:

gallerymanager@sketchclub.org

Late Breaking News – See items that were submitted after the publication date. Go to:

<http://sketchclub.org/late-breaking-news/>

The PSC general email is: info@sketchclub.org

In Memorium

Jackie Barnett

Fellow Artists and friends - It's with great sadness that I must announce the passing of Sketch Club Board of Directors member, Jacqueline "Jackie" Barnett. A devoted artist, long time member, and the lead monitor at the Philadelphia Sketch Club. Jackie was a wonderful friend, and fellow volunteer who worked tirelessly to maintain the Sketch Club workshop program. In addition to tending the gardens and the koi pond. Jackie was always a sympathetic ear. A great listener who always had time to hear of the concerns and problems of fellow artists and models. She will be missed dearly by all who knew her, and the mark that Jackie has left on the Philadelphia Sketch Club will live on, not only in our memories, but also in the lovely gardens that Jackie cultivated for the pleasure of us all. Jackie Barnett's funeral is being held on Tuesday January 3rd

2023 at the Murphy Ruffenach Brian W. Donnelly Funeral Home at 2239 South 3rd St in South Philadelphia Pa. It begins at 11:00 am And is over at 1:00pm. After that is the cremation. Please pay your respects to Jackie.



Jackie Barnett



Figure 1 Jackie and friends - Her favorite spot in the garden

[See Jacqueline "Jackie" Barnett Obituary](#)



Jackie - Workshop Chair and Monitor

Sketch Club Special Events

Things to See at the Philadelphia Sketch Club



Walter E. Baum, Corner House, stone lithograph

There are several groups of artworks to see at the Philadelphia Sketch Club. A good time to do that would be when you are attending one of our major exhibitions in our main gallery. Exhibitions and their times are listed in our website at sketchclub.org. Currently in the downstairs Stewart Gallery there is an exhibition of ten artworks that will be auctioned off at the PSC's 162nd Anniversary Gala on October 22, 2022. Artists of these artworks are Moe Brooker, James Toogood, John Ennis, Henry C. Pitts, Domenic DiStefano, Anthony Michael Autorino, Cesare A. Ricciardi, Carl Weber, Doree Loschiavo and T. Norman Mansell. Another exhibition in the Stewart Gallery includes nine stone lithographs by Walter E. Baum (1884-1956). Baum was an important Pennsylvania impressionist

painter, educator, and art critic for the Philadelphia Bulletin. He was a member of the PSC from 1929 to 1956.

Complementing the Baum lithograph exhibition are two woodblock prints by Edward C. Warwick (1881-1973). Warwick was Dean of the Philadelphia College of Art (now The University of the Arts) and was a PSC member from 1909 to 1973.



Edward C. Warwick, Jumping Stags, wood block print

Sketch Club Special Events

Sketch Club On-Line Gallery: **Always Room for More Work!**

There's always room for more work: Submit Now!

The Sketch Club is hosting an on-going open gallery at: <http://sketchclub.org/sketch-club-open-gallery/>. This gallery is open to PSC members and non-members.

Submit up to 4 images of your work or of yourself working along with a very brief description to: portfolio@sketchclub.org.

Include for your work: Your name; Title; size; and medium.

For photos of yourself include: who you are and a brief description of the image.

On-Line Resources

- The Sketch Club Critique Group: <https://www.facebook.com/groups/PSCCritique>
- The Sketch Club Open Gallery: <https://sketchclub.org/sketch-club-open-gallery/>
- The Sketch Club's web site: sketchclub.org
- Our Facebook page: <https://www.facebook.com/thesketchclub/>
- Instagram: <https://www.instagram.com/philadelphiasketch/>
- Twitter: <https://twitter.com/PhilaSketchClub>
- Members: Stay in touch with other PSC colleagues. For contact information, go to the members only page at: <http://sketchclub.org/members-only-2/>. See Stay in touch with current Sketch Club Members in the members section below for instructions.

Non-Sketch Club friends can find a listing of current members names and business websites if they have one at:

<http://sketchclub.org/sample-page/current-members-contact-list/>.

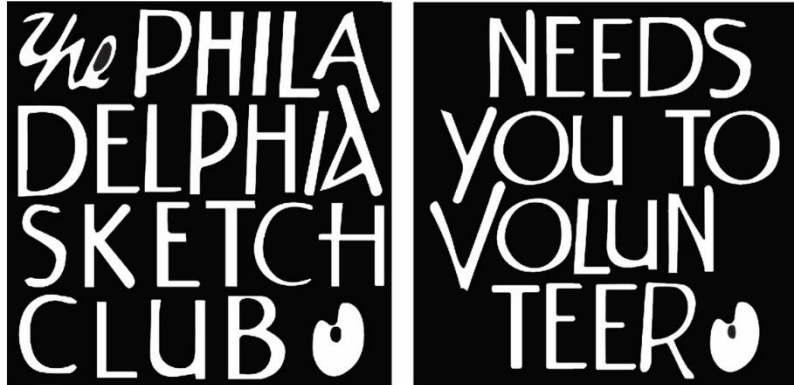
Support the Sketch Club through Amazon Smile

Make free donations to the Sketch Club anytime you shop at Amazon Smile. Remember that anyone who purchases through Amazon can have Amazon make a contribution to the Club for most every purchase you make. Just log in and go to: smile.amazon.com -From there you can select the Philadelphia Sketch Club as your non-profit charity . Done. Then the Club receives a percentage of most every purchase you make. It is a painless way to contribute to the Club's welfare. Most purchases made on your mobile app and from Whole Foods qualify too! Go to smile.amazon.com/about/ to learn more.

Volunteer

Be an Active Sketch Club Member; Volunteer!!

The Philadelphia Sketch Club is managed entirely by volunteers except for the gallery manager, housekeeping, and bookkeeper.



The PSC always needs volunteer members. Volunteering is one of the most important aspects of being a Sketch Club member and it is the one of the best ways to take advantage of the PSC. You'll be working with colleagues who share the same interests and helping the PSC provide unique services to the visual arts community. Sign up for an activity today.

Here are some of the activities that volunteers perform:

- Chair exhibitions
- Assist in hanging exhibitions
- Covering exhibition drop-offs and pick-ups
- Monitor workshops
- Assist with presentations
- Serve on the Board of Directors
- Serve as Key Circle volunteers
- Publish the Portfolio
- Manage the PSC web site
- Gallery coverage
- Graphics for Portfolio, PSC web site, social media
- Assist in every aspect of managing the club and providing member services

To get involved, contact us at: info@sketchclub.org

Gallery hours: By appointment: Wednesday, Friday, Saturday: 1 PM to 5 PM

January 2023

Volunteer

Volunteer: The PSC needs a Chairperson to organize and manage upcoming Sketchclub Exhibitions. Contact our PSC Gallery Manager Kaylie Minzola at gallerymanager@sketchclub.org for details if you are interested.

Volunteers Needed for Gallery Sitting:

Please contact the office gallerymanager@sketchclub.org, or call the office 215-545-9298 Wednesdays and Fridays 11-5pm. Your assistance would be greatly appreciated.

For more information, please contact our Gallery Manager, Kaylie Minzola at:
gallerymanager@sketchclub.org

Sketch Club Critique Group

The Sketch Club Critique FaceBook Group

Join the Critique Facebook Group

Join your Club colleagues online at the "Philadelphia Sketch Club Critique"-- a Private group for Active PSC members only on Facebook.

Colleagues, please join in and contribute to your online art community. We all miss the camaraderie we enjoy at the Club house. The "Philadelphia Sketch Club Critique" is a chance to get together online until we can gather once more around the punch bowl and raise a toast, "to the Sketch Club, past, present and future."



Here's how it works:

- Active members go to the new "Philadelphia Sketch Club Critique" page and request access, which is available to all Club members in good standing.
- Once in post your work and watch as other members' post their artwork for critique.
- More details will be posted within the group including the option to be considered for a monthly "Highlights", a curated online gallery to be published on our external site/Instagram/Twitter channels.

This Facebook Group is private; this means that as Members submit their work others are invited to critique each other in a professional and respectful way.

Critique Group Links:

Sketch Club Critique Group

- You can find a link on the Sketch Club website: <https://sketchclub.org/>
- The Critique Group's Facebook Page: <https://www.facebook.com/groups/PSCCritique>
- The PSC's main FaceBook page: <https://www.facebook.com/thesketchclub>

Art related Internet News Articles

National Geographic Article: These 18 Autochrome Photos Will Transport you to Another Era: The method used to make these dreamy photographs resulted in a painting-like quality that not even today's best Instagram filters can replicate. <https://www.nationalgeographic.com/history/article/autochrome-photography-archive-vintage-history><https://thehustle.co/can-you-get-sued-for-using-a-meme/>

From the Hustle: Can you get sued for using a meme? <https://thehustle.co/can-you-get-sued-for-using-a-meme/>

New venture: Christie's, the prominent auction house, announced it's launched an in-house VC arm called Christie's Ventures, which will focus on art and crypto startups.

<https://www.wsj.com/articles/christies-venture-capital-nft-11657916141?st=lzm39fmeqhkiwu4&reflink=desktopwebshare> [permalink](#)

Can a corporation "own" a color?

<https://thehustle.co/can-a-corporation-trademark-a-color/>

A Humorous take on Art: The Blanton Museum of Art in Austin, Texas, challenged bakers to recreate any of its 21k works of art as cake. See the entries [here](#).

<https://www.smithsonianmag.com/arts-culture/this-museum-is-asking-people-to-remake-famous-artworks-with-cake-180980152/>

<https://www.instagram.com/explore/tags/blantonbakeoff/>

Philly Mural Arts program: Philly has more than 4,000 murals—and counting

<https://www.nationalgeographic.com/travel/article/this-city-has-more-than-4000-murals?>

Women in the arts: The women who redefined color - BBC Culture

<https://www.bbc.com/culture/article/20220401-the-women-who-redefined-colour>

In Memorium: Highlights of the QEII portrait exhibit:

<https://news.artnet.com/art-world/30-portraits-of-queen-elizabeth-ii-332442>

Tax Info for Artists

Sketch Club members might be interested in this summary article with 2022 tax information for freelancers.

-- Submitted by Don Gauger

<https://blog.freelancersunion.org/2022/01/11/whats-new-for-freelancers-in-tax-year-2022/>

Main Gallery Events

Gallery Hours: Wednesday, Friday, Saturday 1 to 5pm

[See the Sketch Club Open Gallery](https://sketchclub.org/exhibition-schedule-2021-2/)
<https://sketchclub.org/exhibition-schedule-2021-2/>
[Important Dates for all PSC Activities](#)

The 39th Annual 2023 School District of Philadelphia HS Art Show

In collaboration with the Philadelphia Sketch Club

in the Main gallery of the Sketch Club

THE 2023 HIGH SCHOOL ART SHOW

- **Show Dates:** February 3-26, 2023
- **Delivery and Hanging by Invited HS Artists and HS Art Teachers:**
 - Wednesday, January 25, 2023 -3:00 – 6:00 PM
 - Thursday, January 26, 2023 - 3:00 – 6:00 PM
 - Friday, January 27, 2023 - 3:00 – 6:00 PM
- **Reception and Awards:** Sunday, February 26, 2023; 2:00- 3:30 PM - (Format TBA)
- **Take Down:** Sunday, February 26, 2023, 3:30- 5:00 PM
- **Judging for Awards:**
Monday, February 1, 2023-10:00 AM-5:00 PM
or Wednesday, February 2, 2023 10:00 AM- 5:00 PM
- **Judge:** TBA



Juror's Choice, Pauline Chen, 2022 PSC HS Art Show, Abstract pencil, Northeast High

Main Gallery Events

The 39th Annual 2023 School District of Philadelphia HS Art Show

Hello Members,

Once again it is time to start planning for the High School Art Show (2023). As usual, we will be asking our loyal generous members for tax deductible contributions for awards for the young artists' artwork. This year, because of Covid restrictions on the amount of people in the Gallery at once, each donor will be permitted only one (\$25) award or at the most two awards.

This is because- the more prizes that are awarded more people must come to receive them, which makes too many people in the gallery at once. If we award only two to each teacher that is much better to manage during this time of limited amount in gatherings. If not enough are received more will be requested. If too many are received the extra can go for operating expenses. Please make your check out to:

The "Philadelphia Sketch Club", with a note in the lower left corner, "HS Art Show Award", and mail or bring it to the PSC office, Kaylie Minzola, Gallery Manager. Her hours are Wed., and Fri. 11:00-5:00PM. Also, notify the amount of your award (s) to Dorothy Roschen, in person, by Phone (215 848 3257), or email (droschen@me.com). Every donor is recognized on a posted complete awards list in the gallery, which is also in the catalogue. (Award amounts are not posted.)

THE CUT-OFF DATE FOR DONATING AWARDS Is Monday, January 30, 2023

The judge must have a full list of awards before judging.

Director of Art Education, School District of Philadelphia, will send the call to entry letters to all School District High School Art Teachers (no charter schools). Usually, about 25-30 teachers respond and they bring and hang 5 labeled pieces each from their classrooms.

Food donations for the reception (Feb. 26) will be asked for closer to that date.

The student work is not for sale, because they need the work for other exhibits and their portfolios to get into art colleges and universities.

Thank you, Members, for your wonderful support for this show. It would be absolutely impossible without you.

Sincerely,

Dorothy Roschen, Chair, 2023 HS Art Show, (215 848 3257), droschen@me.com,

Kaylie Minzola, PSC Gallery Manager

Lynette Brown, Director of Visual Arts, Dance, and Theater

Gallery hours: By appointment: Wednesday, Friday, Saturday: 1 PM to 5 PM

January 2023

Main Gallery Events

The Sketch Club's 2023 Domenic DiStefano Memorial Works on Paper Exhibition: The Philadelphia Sketch Club's 2023 Domenic DiStefano Memorial Works on Paper Exhibition

Call for Work

See the Prospectus:

[2023 Works on Paper Prospectus](#)

Submit your entries here:

[Go to EntryThingy](#)

Call for Entries!
The Philadelphia Sketch Club's 2023
Domenic DiStefano Memorial
Works on Paper Exhibition
March 5 – 24, 2023



2021 Best of Show: Garry Grissom — Ava & Yasin, Cousins

Submission Deadline — February 10, 2023

**Go to sketchclub.org for the
prospectus and to submit online.**

This year's juror: Mick McAndrews



The Philadelphia Sketch Club
235 South Camac Street
Philadelphia PA 19107
215-545 9298 — info@sketchclub.org
A nonprofit organization under Chapter
501(c)(3) of the Internal Revenue Code.

Gallery hours: By appointment: Wednesday, Friday, Saturday: 1 PM to 5 PM

January 2023

Stewart Gallery Events



Exhibition space in the Stewart Gallery is available for PSC Members!

Reserve the gallery by contacting our Exhibition Coordinator:
exhibitions@sketchclub.org

The space is \$150 for a month. Members can show once in the Stewart Gallery per year.

[See the Sketch Club Open Gallery](https://sketchclub.org/exhibition-schedule-2021-2/)
<https://sketchclub.org/exhibition-schedule-2021-2/>
[Important Dates for all PSC Activities](#)

Gallery hours: By appointment: Wednesday, Friday, Saturday: 1 PM to 5 PM

January 2023

Art Natters: Members News

Visit the Sketch Club Online Gallery

Go to the Sketch Club's on-going open gallery to see recent updates with work by PSC members and friends:

<http://sketchclub.org/sketch-club-open-gallery/>.

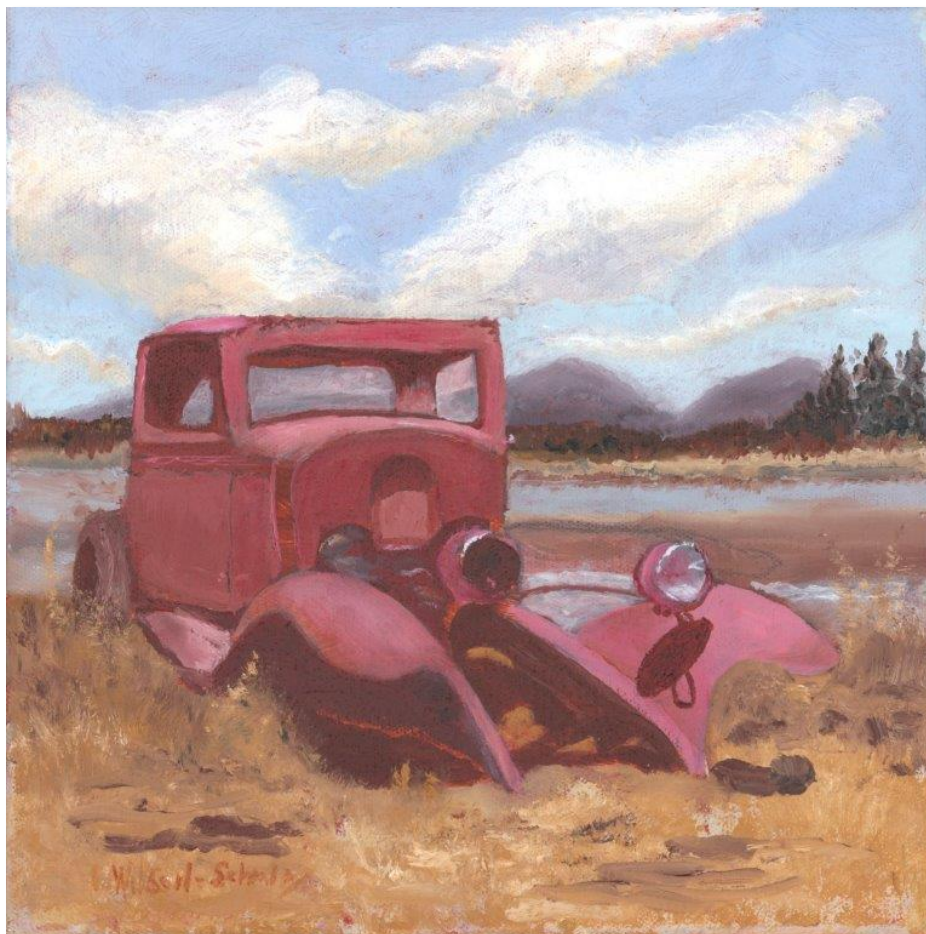
Members and friends can submit up to 4 images. Send your submissions to:

portfolio@sketchclub.org.

Include for your work: Your name; Title; size; and medium.

For photos of yourself, include Who you are and a brief description of the image.

From Sketch Club member, **Pat Wilson-Schmid**



Those Were the Days

Gallery hours: By appointment: Wednesday, Friday, Saturday: 1 PM to 5 PM

January 2023

Art Natters: Members News



Steganographic artwork by Don Gauger, "KNOWLEDGE IS POWER"

Sketch Club member and Sketch Club Critique Group Monitor **Don Gauger** won first place and a gallery show at the National Cryptologic Museum.

The National Cryptologic Museum had an unusual art contest: design original artwork that contained a hidden message "Knowledge is Power." Hiding messages in art is also known as Steganography.

Don's artwork, with solution, is on display for six months. The museum is located in Annapolis Junction, MD. Photos of the museum's grand reopening reception are posted https://www.graylandstudio.com/an-occasional-journal/blog_posts/an-unusual-exhibition-opens-at-the-ncmat: The solution will be posted in six months.

Gallery hours: By appointment: Wednesday, Friday, Saturday: 1 PM to 5 PM

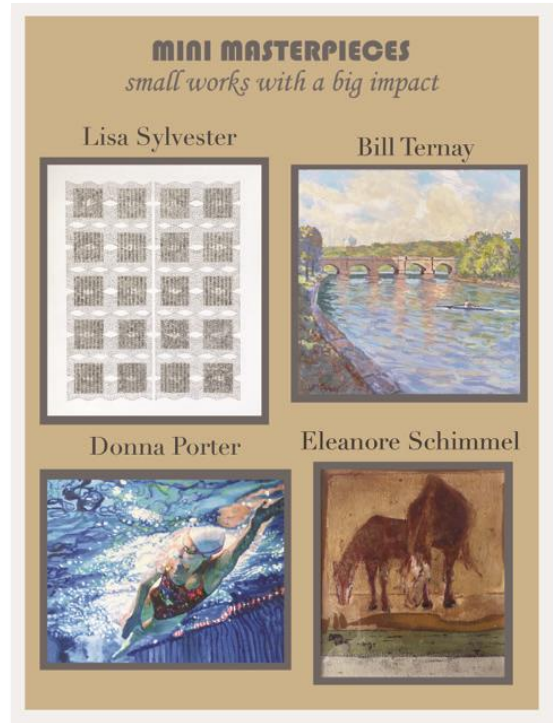
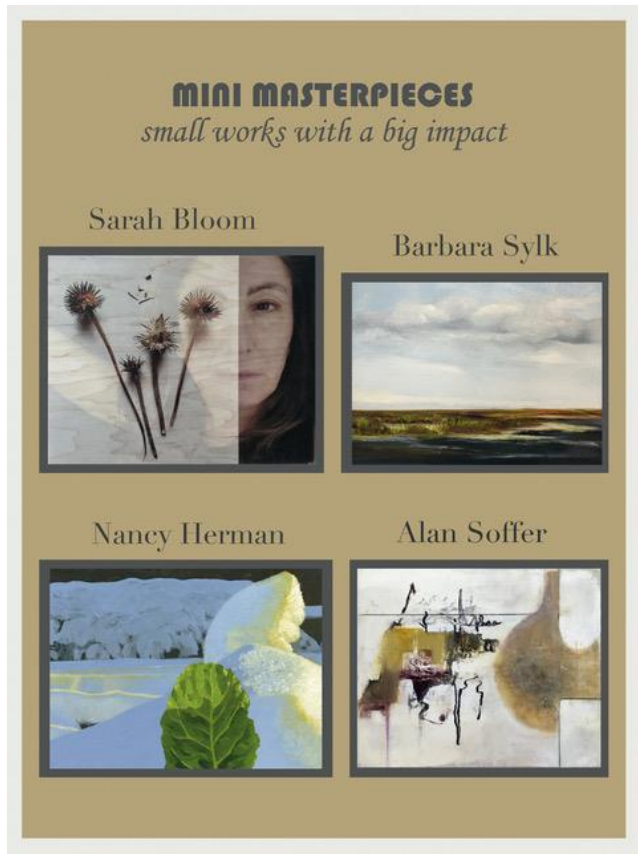
January 2023

Art Natters: Members News

From Sketch Club member, **Nancy Herman**

NANCY HERMAN STUDIO GALLERY
109 ESSEX AVE,
NARBERTH, PA

OPEN 1 TO 4 EVERY DAY

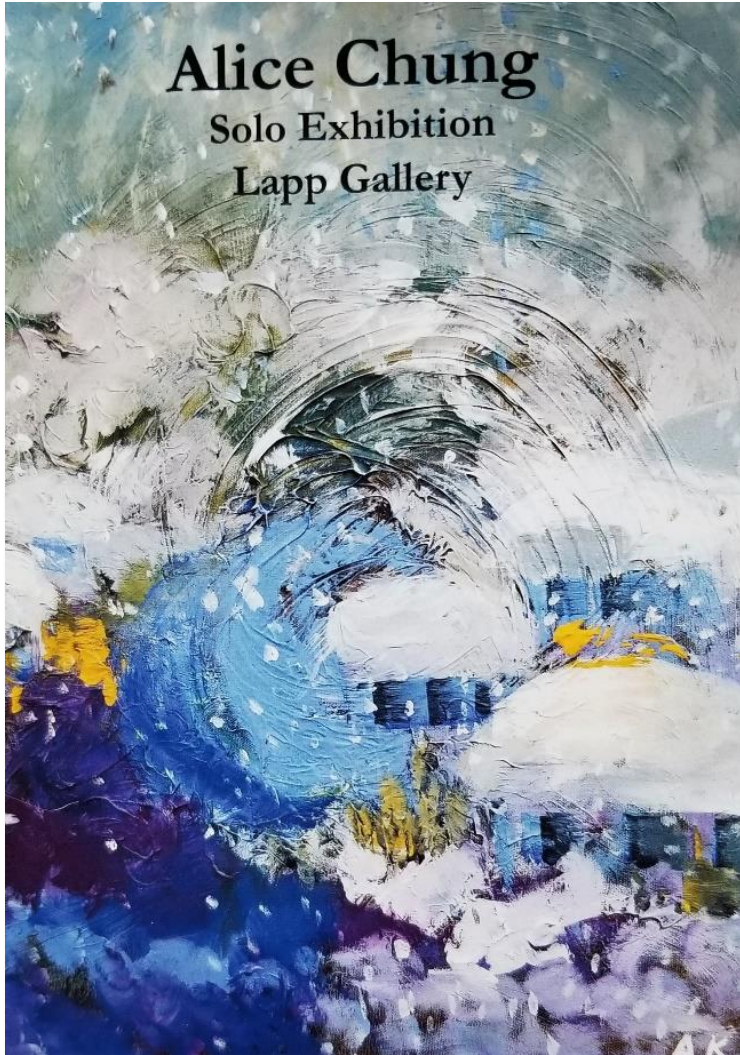


Gallery hours: By appointment: Wednesday, Friday, Saturday: 1 PM to 5 PM

January 2023

Art Natters: Members News

From Sketch Club member **Alice Chung**



Alice Chung
Solo Exhibition
Lapp Gallery

Jan 3, to March 3, 2023
Lapp Gallery at Mennonite Heritage Center
565 Yoder Rd Harleysville, PA 19438

RECEPTION: JAN 7 (SAT) 1pm to 3pm

Gallery Hours: Tues- Fri 10am to 5 pm
Sat 10am to 2pm

Contact: (215) 256-3020
Info@mhep.org.

Alice Chung: akchung1213@gmail.com
(215) 370-6651
www.alicechungartist.com

Gallery hours: By appointment: Wednesday, Friday, Saturday: 1 PM to 5 PM

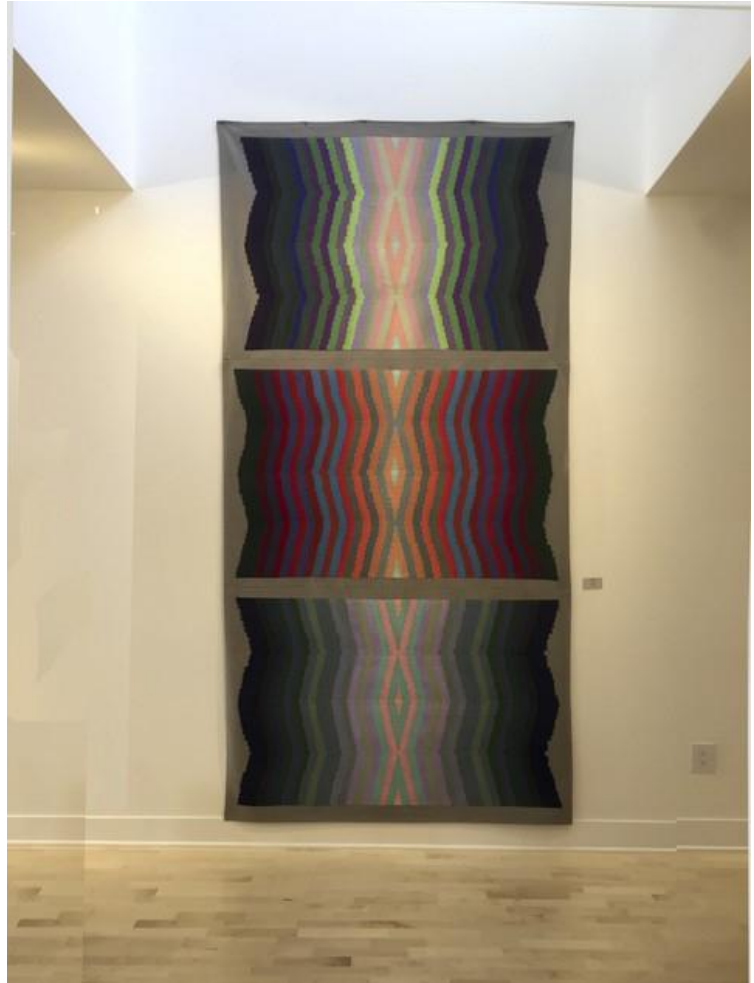
January 2023

Art Natters: Members News

Sketch Club member **NANCY HERMAN's** STUDIO GALLERY, 109 NORTH ESSEX AVE IN NARBERTH, PA. One block from the Septa train station a 15 minute ride form 30th street.

NOW OPEN. Come one come all. Take in the color and the light. Find work in 3D.

Open most afternoons from 1:00 to 5:00. Call to be sure I'll be there. 215-779-2251



Art Natters: Members News

Sketch Club member John R. Dorchester will have a one-person exhibition at 919 North Market Street, Wilmington, DE 19801, starting October 2 and running through the end of December of 2022. There will be an opening on October 7 from 5-7PM. The exhibition space is on the ground floor of the 919 building, a grand, open space with soaring 20 foot ceilings. John's show follows the current exhibition from the Delaware Contemporary Art Institute. The exhibition will include approximately 25 landscape, figure and political paintings painted within the last six years.

John, a 1982 graduate of the Pennsylvania Academy of Fine Arts, made a living as a commercial filmmaker from 1994 through 2014, before returning to his roots as a painter and musician. Since then, his work has garnered awards and been in exhibits across the country including the Philadelphia Sketch Club and the Salmagundi Club in New York City. He is represented by Carspecken-Scott Gallery in Wilmington DE.

For more information, please contact john@johndorchester.net.



"Buttercup" 24" X 30" Oil on Linen ©John R. Dorchester

Gallery hours: By appointment: Wednesday, Friday, Saturday: 1 PM to 5 PM

January 2023

Art Natters: Members News

From Sketch Club member **Gayle Joseph**

Two Watercolors



A Picture Containing Fruit, Fresh



A Close-up of a Fruit

Sketch Club Open Workshop Schedule

Welcome Back!

Sketchclub.org • (215) 545-9298 • 235 S Camac St, Philadelphia, PA 19107

Workshops

Fees

\$10 Model Workshop sessions, \$9 for members
\$6 for full time students

Model Tips are optional but appreciated

Bring your drawing and painting materials!



Watch for emails or visit
<https://sketchclub.org> for more details
on the still life workshop and holiday
cancellations.

The Sketch Club offers in person
workshops in compliance with CDC
guidelines.

Life Model

Monday	6:30 pm - 9:30 pm Extended pose	Monitor: Emily Hirtle
Tuesday	12:00 pm - 3:00 pm Extended pose	Monitor: Jacqueline Barnett
Wednesday	6:30 pm - 9:30 pm Extended pose	Monitor: Valerie Lang
Saturday	9:30am- 12:30pm Extended pose	Monitor: Jacqueline Barnett

Costumed Model

Thursday	12:00pm-3:00pm Extended pose	Monitor: Bob Bohne
----------	---------------------------------	--------------------

Tables, chairs, and easels provided. Please bring your own supplies
Vaccination required for entry

All workshops are open to the public.
There is no need to register before
attending. You do NOT have to be a
member of the Philadelphia Sketch
Club to participate in the workshops.

Our workshops are open to anyone who is interested in drawing, painting, or printmaking. All skill levels are welcome.

Please Note: Those who use oil paints should bring their own container(s) to remove used solvents.
Odorless solvents only. See more important attendee information at: [Workshop Attendee Responsibilities](#)

Thank you to all the PSC members who donate their time and expertise to make these workshops available to PSC members and the Philadelphia art community.

Sketch Club Open Workshop Schedule

Workshop Attendee Responsibilities

During this period of returning to normal, we must remember to observe that some may choose be wearing masks and to respect a 6 foot distance.

Fees will be collected after the second pose. \$9 for non-members, \$8 for members, \$6 for full time students.

When setting up, please give space for others behind or in front of you. Make sure those in back can see the model.

Please observe the easel arrangement in the storage closet and replace your easel in the same manner.

Please make every effort to wipe down your easel when leaving and make sure around your easel is clear of charcoal or pastel dust.

Please put back your easel if leaving early. Use the 10-minute rest to clean up.

Please to not use turpentine for oils.

Please do all aerosol spraying outdoors, front or back yard.

If there is a change in the models pose, please inform the monitor instead of the model.

There will be two snacks available each week. The person who brought them will take these home, only coffee and tea will remain in the cabinet.

Please try to come in early to find an optimal spot to work in to reduce disturbance during workshop time.

Anyone who needs a locker or has fees for a locker should talk to Chuck Tarr, usually here on Tuesdays, or contact the office at 215-545-9298.

Thank you for your efforts to make workshops as efficient and rewarding as possible!


Opportunities/Notices

As a courtesy to our non-PSC-member friends, in support of the Philadelphia artist community, we publish your notices, etc., free of charge. However, contributions to the PSC are always welcome. And we will gladly consider your application for membership

Opportunities/Notices

[Contribute to the Sketch Club Here](#)

[Apply for PSC Membership Here](#)






wayne art center presents


ATTRACTION TO ABSTRACTION

An Exhibition of Works by Wayne Art Center Artists
December 3, 2022–January 21, 2023
 Free & open to the public
VIDINGHOFF AND WAC LOBBY GALLERIES
GALLERY HOURS: Saturday: 9am–4pm
 Monday–Friday: 9am–5pm Sunday: Closed

Artists Reception:
Thursday,
January 12, 2023
5–7pm

Clockwise from Above: Stuart Shils: Feeling in the Classical World, Kathy Davis: The Other Side of Midnight, Deborah Leavy: Red Square, Val Rossman: May Prove Critical, Paulo Correa-Meyer: Different Stories, Jim Conner: A Single Red Door


Juror: Stuart Shils

PARTICIPATING ARTISTS
 Lori Banks
 Sarah Baptist
 Ronnie Bookbinder
 Sivia Braunstein
 Jim Conner
 Paulo Correa-Meyer
 Chris Cox
 Kathy Davis
 Mo Gemgross
 Nancy Herman
 Alan Lankin
 Deborah Leavy
 Anne Leith
 Adam Levin
 Sandi Neiman Lovitz
 Lee Muslin
 Ruth Parker
 Val Rossman
 Julia Salinas
 Alessandra Stradella
 JP Weber

For more information
 visit wayneart.org



wayne art center

413 Maplewood Avenue, Wayne, PA 19087 ■ 610-688-3553 ■ wayneart.org

Gallery hours: By appointment: Wednesday, Friday, Saturday: 1 PM to 5 PM

January 2023

Opportunities/Notices

From **Diane Tomash**

The Atlantic City Arts Garage is located at 2200 Fairmount Ave, Atlantic City, NJ, 08401 the Members Exhibition dates: October 8, 2022 through January 22, 2023.

Clouds drift by as the light crosses the red roof.

Diane Tomash is part of the Artist Membership Exhibition at the Atlantic City Arts Garage of Stockton University.

Hours are 11:00am - 6:00 pm.
Wednesday - Sunday.



"Amongst the Trees" Oil on Linen 11 x 16 inches. \$750.

Gallery hours: By appointment: Wednesday, Friday, Saturday: 1 PM to 5 PM

January 2023

Opportunities/Notices

CONTEMPORARY STILL LIFE CLASS AT THE CERULEAN ARTS GALLERY



TAUGHT BY ELIZABETH HELLER, PHILADELPHIA PAINTER AND SCULPTOR
[www.https://Elizabethhellerart.com](https://Elizabethhellerart.com)

SIX WEEKS, SATURDAYS, JANUARY 14 - FEBRUARY 18, 10AM - 1 PM.

**LEARN A STEP-BY-STEP PROCESS AS YOU WORK DIRECTLY FROM A
SERIES OF ENGAGING STILL LIFE ARRANGEMENTS AND DEVELOP YOUR
OIL PAINTING SKILLS.**

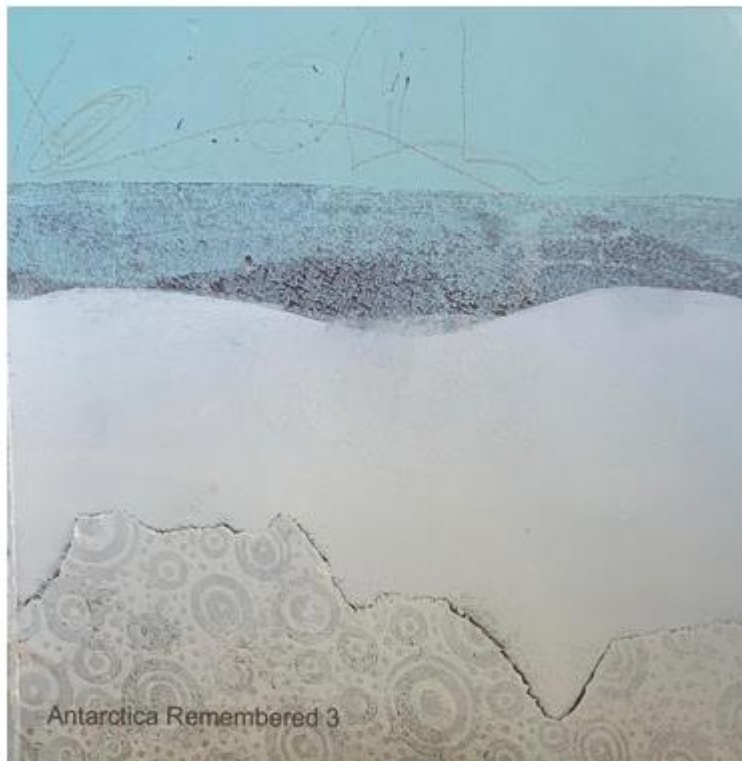
FOR MORE INFORMATION, MATERIALS LIST, AND CLASS SCHEDULE:
[@https://ceruleanarts.com/studio](https://ceruleanarts.com/studio)

Gallery hours: By appointment: Wednesday, Friday, Saturday: 1 PM to 5 PM

January 2023

Opportunities/Notices

Wishing All the Happiest of Holidays! **Linda Dubin Garfield**



Happy winter holiday of
your heritage!!

Linda Dubin Garfield
printmaker/mixed media artist

<https://www.lindadubingarfield.com/>

Membership

Stay in touch with current Sketch Club Members

Don't let sheltering in place prevent you from staying in touch with your Sketch Club friends and colleagues. Sketch Club members can access contact information for all current members. Go to the members only page at: <http://sketchclub.org/members-only-2/>. After you log-in with the password sent to you in your acceptance email you can click on the Membership Directory link to access members contact information. Non-Sketch Club friends can find a listing of current members along with their websites if they have one at: <http://sketchclub.org/sample-page/current-members-contact-list/>:

Not a PSC Member?: Join Now!

If you're reading this edition of the Portfolio and you're not a member of the PSC, you should consider joining the more than 200 other Philadelphia area artists who have. The PSC is one of the most active visual art venues serving center city Philadelphia. The PSC is a hands-on organization that offers its members the opportunity to participate in all aspects of creating and presenting work to the public. It presents over 20 scheduled group and solo exhibitions annually and offers a wide range of daily workshops. [Get info and an application here.](#)

If you are a member of the PSC, please feel free to share the Portfolio with your artist friends and encourage them to become members.

Membership Renewal

You can check the status of your membership by going to the Current Members page on the PSC web-site: <http://sketchclub.org/sample-page/memberspace/>. All current members are listed. An asterisk (*) means that the membership has expired but is within the 60-day grace period for renewal. Names in red are active links to the individual's web site.

Renew Now! <http://sketchclub.org/annual-dues-payment/>

If you have any questions about your membership, please don't hesitate to contact us at membership@sketchclub.org or call the office: 215-545-9298.

Support the Sketch Club

Contribute

Please consider making your tax-deductible contribution now. These funds will be put to good use providing enhanced services to our members and friends.

Membership dues cover only a small portion of the PSC's operating expenses. Competition for funding for arts organizations like the Sketch Club is increasingly competitive and total funding for the arts is shrinking. Your additional support will keep the PSC an active support for visual artists in the Metropolitan Philadelphia area. The Philadelphia Sketch Club is an IRS designated 501(c) (3) non-profit organization.

Gallery hours: By appointment: Wednesday, Friday, Saturday: 1 PM to 5 PM

January 2023

Support the Sketch Club

You can call the office at 215-545-9298, mail checks to the Sketch Club or visit the Contribute page of our Website.

Visit our **Contribute** page of our website to give online at:

<http://sketchclub.org/support-us/>

You can also support the PSC on an ongoing basis when you shop on Amazon. Go to: <http://smile.amazon.com/> and enter the Philadelphia Sketch Club in the Pick your own charitable organization box.

Your support makes it possible for the PSC to continue providing ongoing daily workshops and numerous annual gallery exhibitions.

Like, Link & Share

If you're not following the Philadelphia Sketch Club on Facebook re-tweeting Sketch Club tweets yet, it's time that you did. We have well over 2000 Facebook followers. Get the word out about the Sketch Club. Please click the like button and share your comments and invite your friends to like our page. Follow @PhilaSketchClub on Twitter, we have almost 400 followers. Please click the heart button and re-tweet our announcements.

Include links on your website, blogs and social media to The Philadelphia Sketch Club to increase traction across social media platforms.

Follow us on Facebook, Twitter and Instagram now!



Classifieds



Your Ad Here... Have something to sell? Looking for something?
Contact portfolio@sketchclub to arrange for posting.



Gallery hours: By appointment: Wednesday, Friday, Saturday: 1 PM to 5 PM

January 2023

The Portfolio: The newsletter of the Philadelphia Sketch Club is published monthly. Editor, technical support, and webmaster: Ken Weiner. Send your member news, announcements and corrections to portfolio@sketchclub.org. The due date for all materials is one week before the end of the month. Back issues of the Portfolio are available at: <http://sketchclub.org/portfolio-archive/>

Thanks to PSC member volunteer **Ken Weiner** for his ongoing support of Sketch Club technology and communications functions.

The Philadelphia Sketch Club

235 S Camac Street
Philadelphia, PA 19107
(215) 545-9298
<http://sketchclub.org/>
gallerymanager@sketchclub.org
info@sketchclub.org

Gallery Manager: Kaylie Minzola

Officers:

- President: Richard Harrington
- Vice President: Kenneth Weiner
- Secretary: Elise Anzini
- Treasurer: William Patterson

Board of Directors

- Renard Edwards
- Stephen Iwanczuk
- Edward Pluciennik
- Charles F. Tarr
- Gail Williams