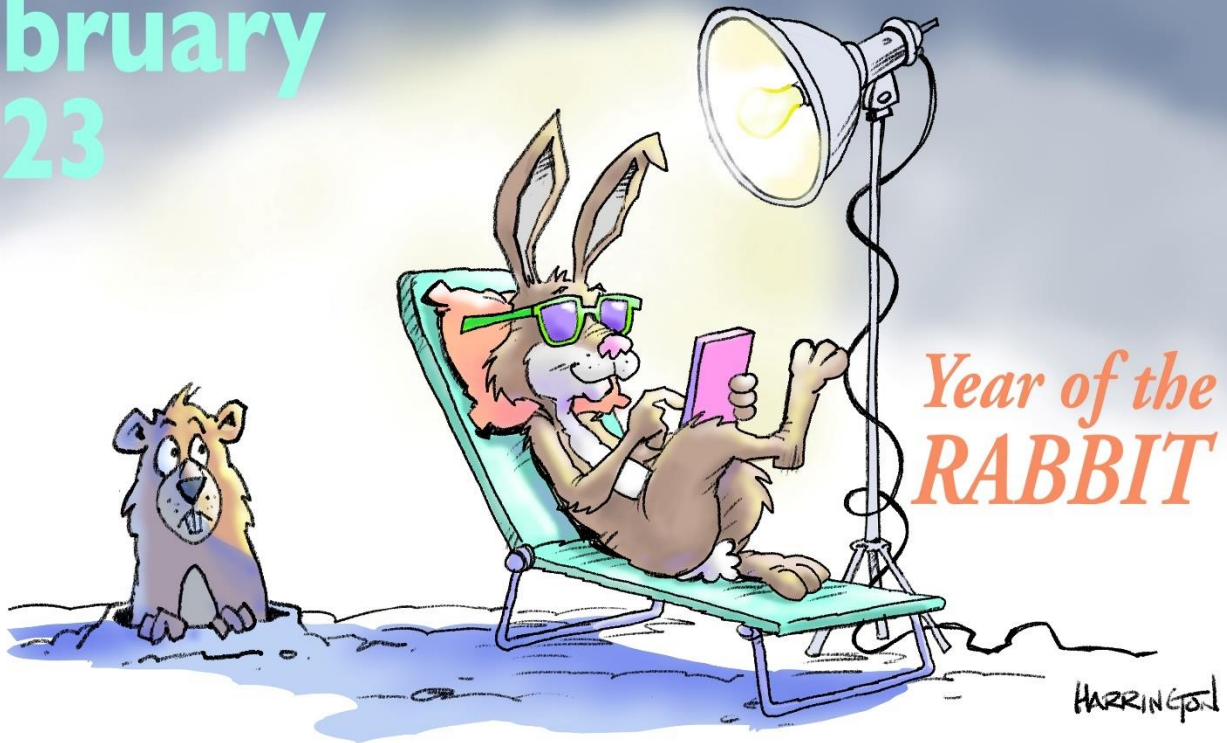


February 2023



Richard Harrington

This Month's Portfolio

Sketch Club Special Events	2
Volunteer	4
Sketch Club Critique Group	5
Main Gallery Events	7
Stewart Gallery Events	11
Sketch Club Open Workshop Schedule	18
Opportunities/Notices	20
Membership	24
Support the Sketch Club	24
Classifieds	25

Send your member news, announcements, and corrections to:
portfolio@sketchclub.org. The deadline for ALL submissions is
1-week before the end of the month.

Reminder: It's never too late. You can always renew
your membership

You may pay online at <http://sketchclub.org/annual-dues-payment/> or mail your check to:

The Philadelphia Sketch Club
235 S. Camac St.

Philadelphia, PA 19107

For questions please contact the Gallery Manager at
215-545-9298 or email:

gallerymanager@sketchclub.org

Late Breaking News – See items that were submitted
after the publication date. Go to:

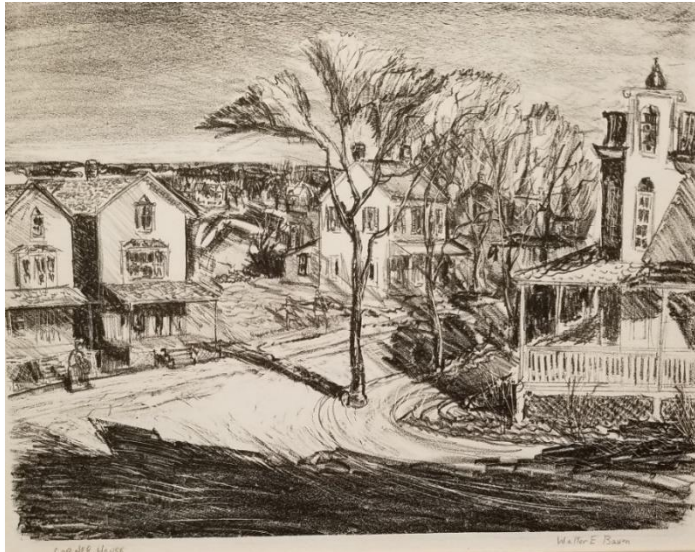
<http://sketchclub.org/late-breaking-news/>

The PSC general email is: info@sketchclub.org

Sketch Club Special Events

Things to See at the Philadelphia Sketch Club

There are several groups of artworks to see at the Philadelphia Sketch Club. A good time to do that would be



Walter E. Baum, Corner House, stone lithograph

when you are attending one of our major exhibitions in our main gallery. Exhibitions and their times are listed in our website at sketchclub.org. Currently in the downstairs Stewart Gallery there is an exhibition of ten artworks that will be auctioned off at the PSC's 162nd Anniversary Gala on October 22, 2022. Artists of these artworks are Moe Brooker, James Toogood, John Ennis, Henry C. Pitts, Domenic DiStefano, Anthony Michael Autorino, Cesare A. Ricciardi, Carl Weber, Doree Loschiavo and T. Norman Mansell. Another exhibition in the Stewart Gallery includes nine stone lithographs by Walter E. Baum (1884-1956). Baum was an important Pennsylvania impressionist painter, educator, and art critic for the Philadelphia Bulletin. He was a member of the PSC from 1929 to 1956.

Complementing the Baum lithograph exhibition are two woodblock prints by Edward C. Warwick (1881-1973). Warwick was Dean of the Philadelphia College of Art (now The University of the Arts) and was a PSC member from 1909 to 1973.



Edward C. Warwick, Jumping Stags, wood block print

Sketch Club Special Events

Sketch Club On-Line Gallery: **Always Room for More Work!**

There's always room for more work: Submit Now!

The Sketch Club is hosting an on-going open gallery at: <http://sketchclub.org/sketch-club-open-gallery/>. This gallery is open to PSC members and non-members.

Submit up to 4 images of your work or of yourself working along with a very brief description to: portfolio@sketchclub.org.

Include for your work: Your name; Title; size; and medium.

For photos of yourself include: who you are and a brief description of the image.

On-Line Resources

- The Sketch Club Critique Group: <https://www.facebook.com/groups/PSCCritique>
- The Sketch Club Open Gallery: <https://sketchclub.org/sketch-club-open-gallery/>
- The Sketch Club's web site: sketchclub.org
- Our Facebook page: <https://www.facebook.com/thesketchclub/>
- Instagram: <https://www.instagram.com/philadelphiasketch/>
- Twitter: <https://twitter.com/PhilaSketchClub>
- Members: Stay in touch with other PSC colleagues. For contact information, go to the members only page at: <http://sketchclub.org/members-only-2/>. See Stay in touch with current Sketch Club Members in the members section below for instructions.

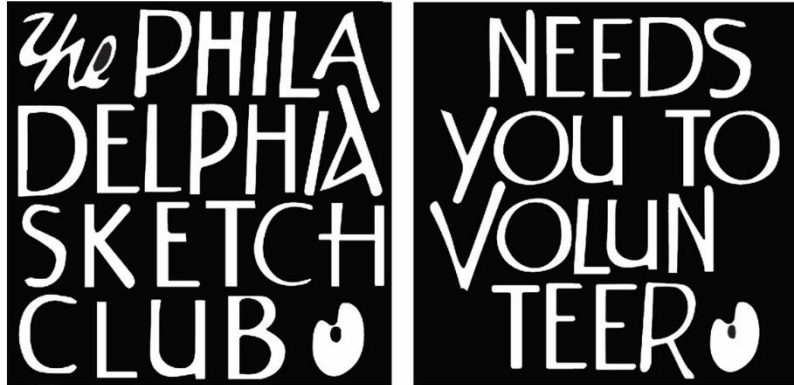
Non-Sketch Club friends can find a listing of current members names and business websites if they have one at:

<http://sketchclub.org/sample-page/current-members-contact-list/>.

Volunteer

Be an Active Sketch Club Member; Volunteer!!

The Philadelphia Sketch Club is managed entirely by volunteers except for the gallery manager, housekeeping, and bookkeeper.



The PSC always needs volunteer members. Volunteering is one of the most important aspects of being a Sketch Club member and it is the one of the best ways to take advantage of the PSC. You'll be working with colleagues who share the same interests and helping the PSC provide unique services to the visual arts community. Sign up for an activity today.

Here are some of the activities that volunteers perform:

- Chair exhibitions
- Assist in hanging exhibitions
- Covering exhibition drop-offs and pick-ups
- Monitor workshops
- Assist with presentations
- Serve on the Board of Directors
- Serve as Key Circle volunteers
- Publish the Portfolio
- Manage the PSC web site
- Gallery coverage
- Graphics for Portfolio, PSC web site, social media
- Assist in every aspect of managing the club and providing member services

To get involved, contact us at: info@sketchclub.org

Gallery hours: By appointment: Wednesday, Friday, Saturday: 1 PM to 5 PM

February 2023

Volunteer

Volunteer: The PSC needs a Chairperson to organize and manage upcoming Sketchclub Exhibitions. Contact our PSC Gallery Manager Kaylie Minzola at gallerymanager@sketchclub.org for details if you are interested.

Volunteers Needed for Gallery Sitting:

Please contact the office gallerymanager@sketchclub.org, or call the office 215-545-9298 Wednesdays and Fridays 11-5pm. Your assistance would be greatly appreciated.

For more information, please contact our Gallery Manager, Kaylie Minzola at:
gallerymanager@sketchclub.org

Sketch Club Critique Group

The Sketch Club Critique FaceBook Group

Join the Critique Facebook Group

Join your Club colleagues online at the "Philadelphia Sketch Club Critique"-- a Private group for Active PSC members only on Facebook.

Colleagues, please join in and contribute to your online art community. We all miss the camaraderie we enjoy at the Club house. The "Philadelphia Sketch Club Critique" is a chance to get together online until we can gather once more around the punch bowl and raise a toast, "to the Sketch Club, past, present and future."



Here's how it works:

- Active members go to the new "Philadelphia Sketch Club Critique" page and request access, which is available to all Club members in good standing.
- Once in post your work and watch as other members' post their artwork for critique.
- More details will be posted within the group including the option to be considered for a monthly "Highlights", a curated online gallery to be published on our external site/Instagram/Twitter channels.

This Facebook Group is private; this means that as Members submit their work others are invited to critique each other in a professional and respectful way.

Critique Group Links:

Sketch Club Critique Group

- You can find a link on the Sketch Club website: <https://sketchclub.org/>
- The Critique Group's Facebook Page: <https://www.facebook.com/groups/PSCCritique>
- The PSC's main FaceBook page: <https://www.facebook.com/thesketchclub>

Art related Internet News Articles

National Geographic Article: These 18 Autochrome Photos Will Transport you to Another Era: The method used to make these dreamy photographs resulted in a painting-like quality that not even today's best Instagram filters can replicate. <https://www.nationalgeographic.com/history/article/autochrome-photography-archive-vintage-history><https://thehustle.co/can-you-get-sued-for-using-a-meme/>

From the Hustle: Can you get sued for using a meme? <https://thehustle.co/can-you-get-sued-for-using-a-meme/>

New venture: Christie's, the prominent auction house, announced it's launched an in-house VC arm called Christie's Ventures, which will focus on art and crypto startups.

<https://www.wsj.com/articles/christies-venture-capital-nft-11657916141?st=lzm39fmeqhkiwu4&reflink=desktopwebshare> [permalink](#)

Can a corporation "own" a color?

<https://thehustle.co/can-a-corporation-trademark-a-color/>

A Humorous take on Art: The Blanton Museum of Art in Austin, Texas, challenged bakers to recreate any of its 21k works of art as cake. See the entries [here](#).

<https://www.smithsonianmag.com/arts-culture/this-museum-is-asking-people-to-remake-famous-artworks-with-cake-180980152/?>

<https://www.instagram.com/explore/tags/blantonbakeoff/>

Philly Mural Arts program: Philly has more than 4,000 murals—and counting

<https://www.nationalgeographic.com/travel/article/this-city-has-more-than-4000-murals?>

Women in the arts: The women who redefined color - BBC Culture

<https://www.bbc.com/culture/article/20220401-the-women-who-redefined-colour>

In Memorium: Highlights of the QEII portrait exhibit:

<https://news.artnet.com/art-world/30-portraits-of-queen-elizabeth-ii-332442>

Tax Info for Artists

Sketch Club members might be interested in this summary article with 2022 tax information for freelancers.

-- Submitted by Don Gauger

<https://blog.freelancersunion.org/2022/01/11/whats-new-for-freelancers-in-tax-year-2022/>

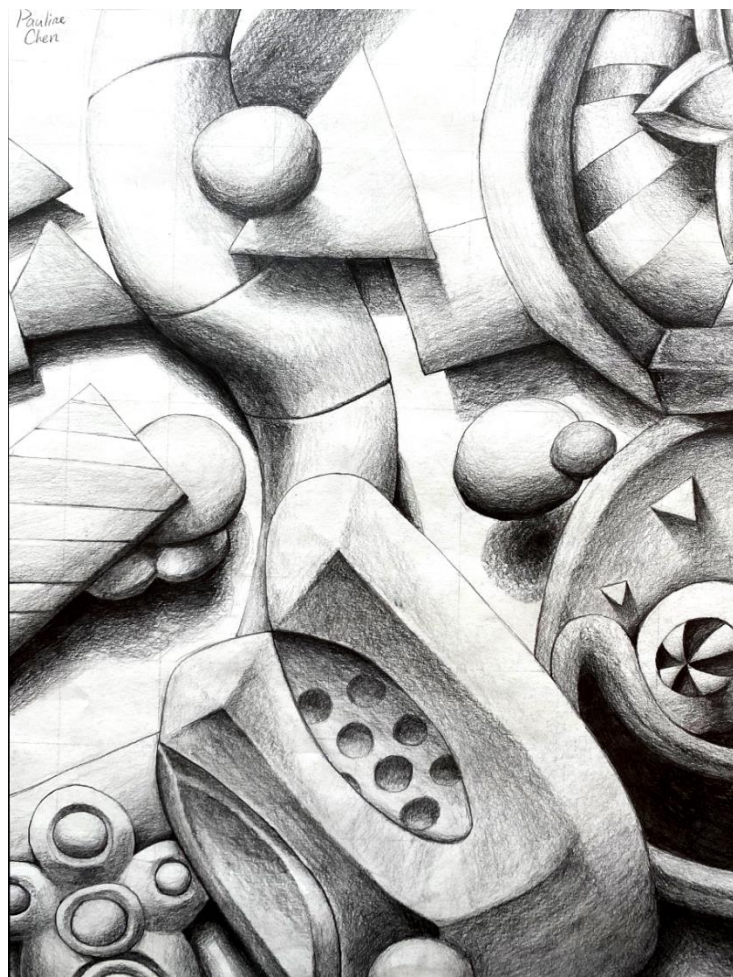
Gallery hours: By appointment: Wednesday, Friday, Saturday: 1 PM to 5 PM

February 2023

Main Gallery Events

Gallery Hours: Wednesday, Friday, Saturday 1 to 5pm

[See the Sketch Club Open Gallery](https://sketchclub.org/exhibition-schedule-2021-2/)
<https://sketchclub.org/exhibition-schedule-2021-2/>
[Important Dates for all PSC Activities](#)



Pauline Chen, 2022 Juror's Choice, Abstraction, pencil.

THE 39TH ANNUAL HIGH SCHOOL ART SHOW

in memoriam of Jacquieline Barnett

THE SCHOOL DISTRICTS OF PHILADELPHIA &
THE PHILADELPHIA SKETCH CLUB PRESENTS

February 3rd - 26th, 2023

Reception and Awards

February 26th 2-3:30

Philadelphia
Sketch club
235 s camac street
Philadelphia, PA
19107

**the PHILA
DELPHIA
SKETCH
CLUB**

Main Gallery Events

The 39th Annual 2023 School District of Philadelphia HS Art Show

In collaboration with the Philadelphia Sketch Club

in the Main gallery of the Sketch Club

THE 2023 HIGH SCHOOL ART SHOW

- **Show Dates:** February 3-26, 2023
- **Delivery and Hanging by Invited HS Artists and HS Art Teachers:**
 - Wednesday, January 25, 2023 - 3:00 – 6:00 PM
 - Thursday, January 26, 2023 - 3:00 – 6:00 PM
 - Friday, January 27, 2023 - 3:00 – 6:00 PM
- **Reception and Awards:** Sunday, February 26, 2023; 2:00- 3:30 PM - (Format TBA)
- **Take Down:** Sunday, February 26, 2023, 3:30- 5:00 PM
- **Judging for Awards:**
Friday, February 3, 2023-10:00 AM-5:00 PM
- **Judge:** Mango Tassi

Margo Tassi

Two person **shows** at **Rosemont College and Cerulean Arts** (2022 & 2020) **Hugh & Dorothy Hutton Intaglio Award**, ACPS member's Show 2017 **Signature member** Philadelphia Watercolor Society from 2008 **Residencies** at Vermont Studio Center, Dorland Mountain Arts Center

Art teacher, School District of Philadelphia, Bensalem School District and School district of St. Louis, for a total of **25 years**

Video from Cerulean Arts "**Hinterlands**" Show:

<https://www.youtube.com/watch?v=DkqhJwI-b7o&t=10s>



Juror's Choice, Pauline Chen, 2022 PSC HS Art Show,
Abstract pencil. Northeast High

Main Gallery Events

The 39th Annual 2023 School District of Philadelphia HS Art Show

Hello Members,

Once again it is time to start planning for the High School Art Show (2023). As usual, we will be asking our loyal generous members for tax deductible contributions for awards for the young artists' artwork. This year, because of Covid restrictions on the amount of people in the Gallery at once, each donor will be permitted only one (\$25) award or at the most two awards.

This is because- the more prizes that are awarded more people must come to receive them, which makes too many people in the gallery at once. If we award only two to each teacher that is much better to manage during this time of limited amount in gatherings. If not enough are received more will be requested. If too many are received the extra can go for operating expenses. Please make your check out to:

The "Philadelphia Sketch Club", with a note in the lower left corner, "HS Art Show Award", and mail or bring it to the PSC office, Kaylie Minzola, Gallery Manager. Her hours are Wed., and Fri. 11:00-5:00PM. Also, notify the amount of your award (s) to Dorothy Roschen, in person, by Phone (215 848 3257), or email (droschen@me.com). Every donor is recognized on a posted complete awards list in the gallery, which is also in the catalogue. (Award amounts are not posted.)

THE CUT-OFF DATE FOR DONATING AWARDS Is Monday, January 30, 2023

The judge must have a full list of awards before judging.

Director of Art Education, School District of Philadelphia, will send the call to entry letters to all School District High School Art Teachers (no charter schools). Usually, about 25-30 teachers respond and they bring and hang 5 labeled pieces each from their classrooms.

Food donations for the reception (Feb. 26) will be asked for closer to that date.

The student work is not for sale, because they need the work for other exhibits and their portfolios to get into art colleges and universities.

Thank you, Members, for your wonderful support for this show. It would be absolutely impossible without you.

Sincerely,

Dorothy Roschen, Chair, 2023 HS Art Show, (215 848 3257), droschen@me.com,

Kaylie Minzola, PSC Gallery Manager

Lynette Brown, Director of Visual Arts, Dance, and Theater, School District of Philadelphia

Gallery hours: By appointment: Wednesday, Friday, Saturday: 1 PM to 5 PM

February 2023

Coming in March

Submissions accepted until deadline – Midnight February 10th.

**The Sketch Club's 2023 Domenic DiStefano Memorial Works on Paper Exhibition:
The Philadelphia Sketch Club's 2023 Domenic DiStefano Memorial Works on
Paper Exhibition**

Call for Entries!

The Philadelphia Sketch Club's 2023
Domenic DiStefano Memorial
Works on Paper Exhibition
March 5 – 24, 2023



2021 Best of Show: Garry Grissom — Ava & Yasin, Cousins

Submission Deadline — February 10, 2023

**Go to sketchclub.org for the
prospectus and to submit online.**

This year's juror: Mick McAndrews



The Philadelphia Sketch Club
235 South Camac Street
Philadelphia PA 19107
215-545 9298 — info@sketchclub.org
A nonprofit organization under Chapter
501(c)(3) of the Internal Revenue Code.

Call for Work

See the Prospectus:

[2023 Works on Paper Prospectus](#)

Submit your entries here:

[Go to EntryThingy](#)

Gallery hours: By appointment: Wednesday, Friday, Saturday: 1 PM to 5 PM

February 2023

Stewart Gallery Events



**Exhibition space in
the Stewart Gallery
is available for PSC
Members!**

Reserve the gallery by
contacting our
Exhibition Coordinator:
exhibitions@sketchclub.org

The space is \$150 for a
month. Members can
show once in the Stewart
Gallery per year.

[See the Sketch Club Open Gallery](https://sketchclub.org/exhibition-schedule-2021-2/)
<https://sketchclub.org/exhibition-schedule-2021-2/>
[Important Dates for all PSC Activities](#)

Art Natters: Members News

Visit the Sketch Club Online Gallery

Go to the Sketch Club's on-going open gallery to see recent updates with work by PSC members and friends:

<http://sketchclub.org/sketch-club-open-gallery/>.

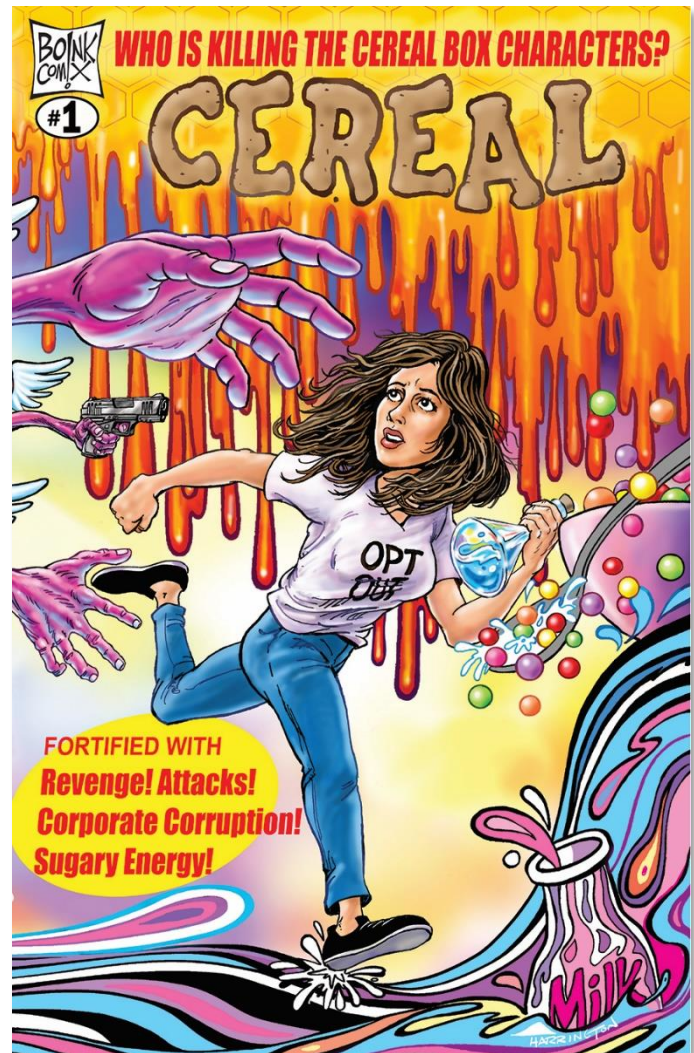
Members and friends can submit up to 4 images. Send your submissions to:

portfolio@sketchclub.org.

Include for your work: Your name; Title; size; and medium.

For photos of yourself, include Who you are and a brief description of the image.

Sketch Club member **Rich Harrington** has illustrated a comic book, collaborating with Don Steinberg, a longtime journalist and New Yorker humor writer. CEREAL is a murder mystery, business satire, and comic fantasy -- and may be the first comic book series ever set in the breakfast cereal world! The hero is a genius cereal inventor on the verge of a game-changing breakthrough. She starts receiving desperate messages from the cereal box cartoon characters, who are being violently killed off. Rich and Don created a fake cereal company filled with corrupt executives, as well as dozens of crazy cereals and characters. Issue #1 of CEREAL is available at boinkcomix.com.



Gallery hours: By appointment: Wednesday, Friday, Saturday: 1 PM to 5 PM

February 2023

Art Natters: Members News

Sketch Club Member **Nina Yocom** is featured in a new collaboration between The Plastic Club and Off the Wall Gallery at Dirty Frank's "New Faces of '23". Nina's artwork will be on display at the exhibition through March 3, 2023.

To view this exhibition online:

<https://www.offthewallgallery.org/>

<https://www.ninayocom.com/>



Smoky Blues - Framed 20 X 16 - Alcohol Ink on Yupo

A PLASTIC/WALL
Collaboration
1.15-3.03.23
Opens Thu 1.19
7-10 p.m.

Robin Brownfield
Robert Cox
David Horwitz
Gloria Klaiman
Gretchen Raichle
Mick Ricereto
Bill Skwersky
John Stritzinger
Pamela Tudor
Nina Yocom

**NEW FACES
OF '23**

Off the Wall Gallery AT DIRTY FRANK'S
NE Corner, 13th & Pine offthewallgallery.org @OTWDirtyFranks

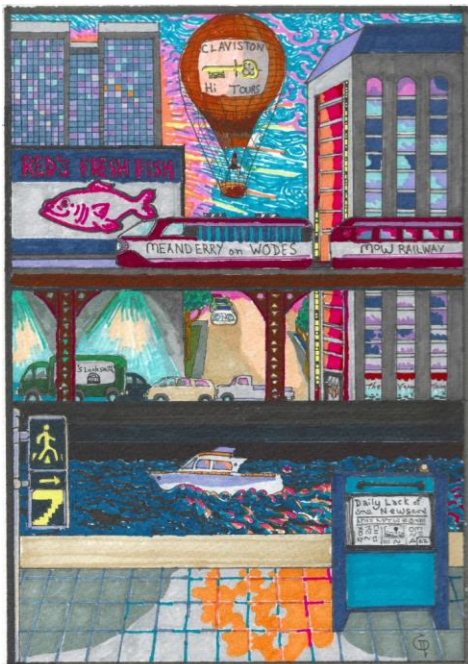
Dirty Frank's is located at the corner of 13th and Pine, 347 S 13th St, Philadelphia, PA 19107.

Art Natters: Members News

From Sketch Club member **John Deitz**



Whitney's Birthday Bash - iPad sketch



**Steganographic artwork by Don Gauger,
"KNOWLEDGE IS POWER"**

Sketch Club member and Sketch Club Critique Group Monitor **Don Gauger** won first place and a gallery show at the National Cryptologic Museum.

The National Cryptologic Museum had an unusual art contest: design original artwork that contained a hidden message "Knowledge is Power." Hiding messages in art is also known as Steganography.

Don's artwork, with solution, is on display for six months. The museum is located in Annapolis Junction, MD. Photos of the museum's grand reopening reception are posted https://www.graylandstudio.com/an-occasional-journal/blog_posts/an-unusual-exhibition-opens-at-the-ncmat: The solution will be posted in six months.

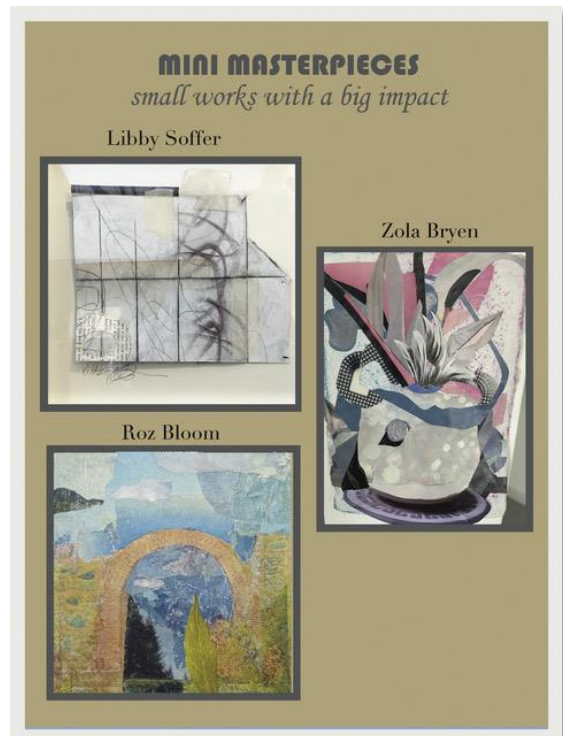
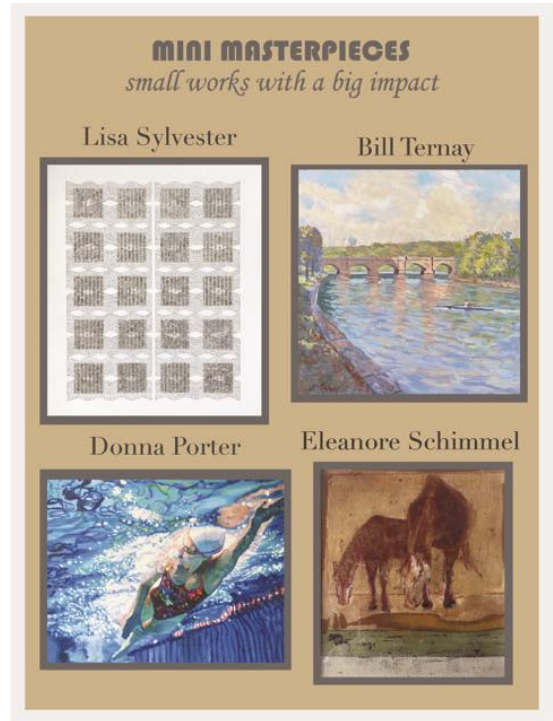
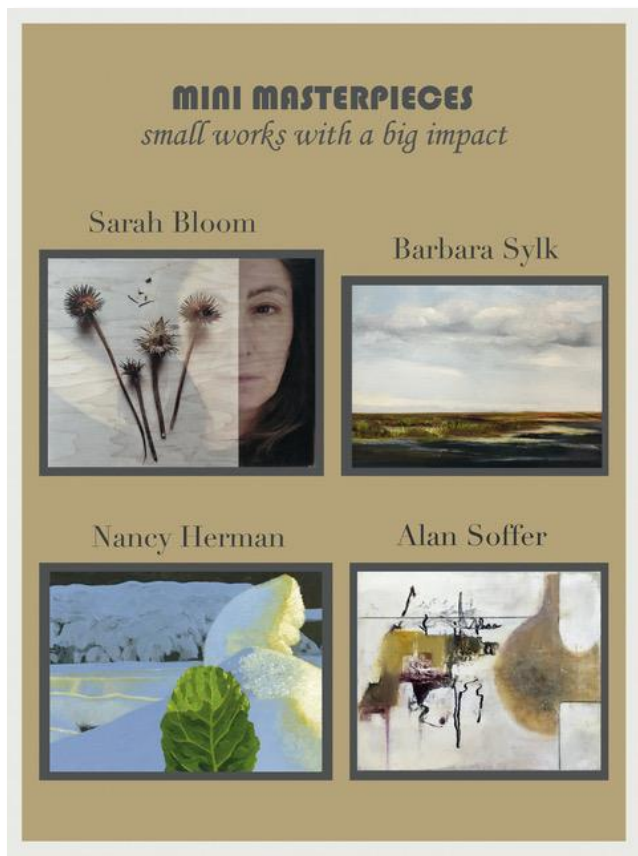
Gallery hours: By appointment: Wednesday, Friday, Saturday: 1 PM to 5 PM

February 2023

Art Natters: Members News

From Sketch Club member, **Nancy Herman**

NANCY HERMAN STUDIO GALLERY still showing work by local artists at 109 North Essex Ave in Narberth. Open 1-3 every day except Monday. Show continues until February 24th.

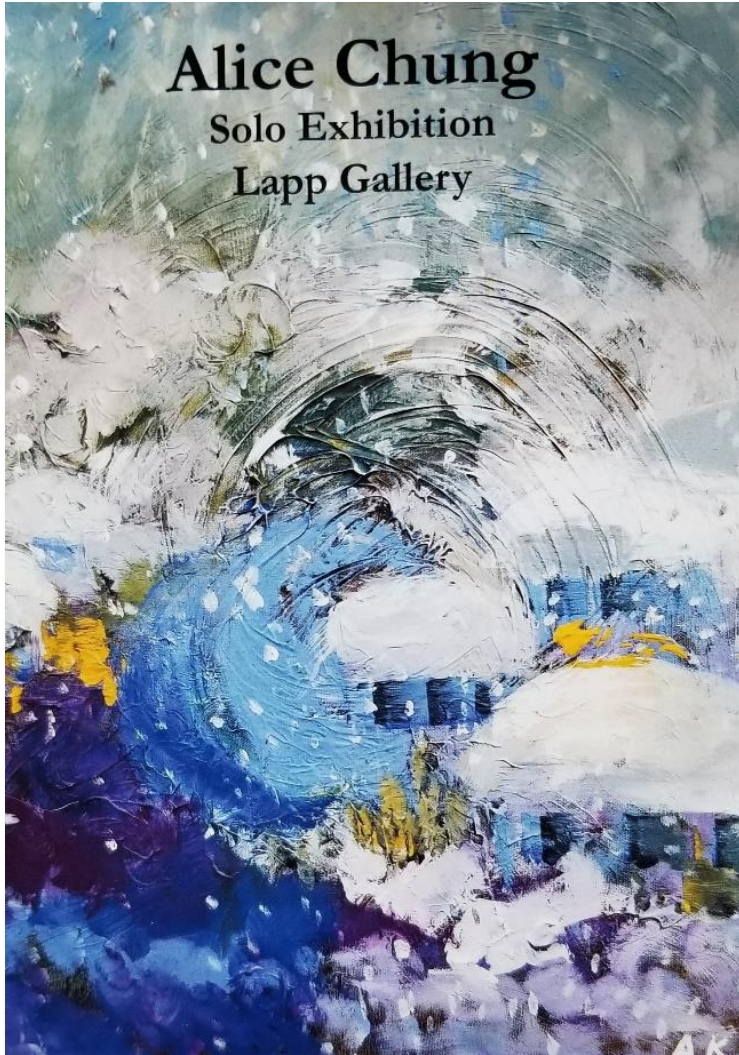


Gallery hours: By appointment: Wednesday, Friday, Saturday: 1 PM to 5 PM

February 2023

Art Natters: Members News

From Sketch Club member **Alice Chung**



Alice Chung
Solo Exhibition
Lapp Gallery

Jan 3, to March 3, 2023

Lapp Gallery at Mennonite Heritage Center
565 Yoder Rd, Harleysville, PA 19438

Gallery Hours: Tues – Friday, 10am to 3pm
Sat 10am to 2pm

Contact: (215) 256-3020

info@mhep.org

Alice Chung: akchung1213@gmail.com

www.alicechungartist.com

Art Natters: Members News

From Sketch Club member **Gayle Joseph**

Two Watercolors



A Picture Containing Fruit, Fresh



A Close-up of a Fruit

Sketch Club Open Workshop Schedule

Welcome Back!

Sketchclub.org • (215) 545-9298 • 235 S Camac St, Philadelphia, PA 19107

Workshops

Fees

\$10 Model Workshop sessions, \$9 for members

\$6 for full time students

Model Tips are optional but appreciated

Bring your drawing and painting materials!



Life Model

Monday	6:30 pm - 9:30 pm Extended pose	Monitor: Bob Bohne
Tuesday	12:00 pm - 3:00 pm Extended pose	Monitor: Volunteer
Wednesday	6:30 pm - 9:30 pm Extended pose	Monitor: Andrew Gonsi
Saturday	9:30am- 12:30pm Extended pose	Monitor: Tiger Jaser

Costumed Model

Thursday	12:00pm-3:00pm Extended pose	Monitor: Bob Bohne
----------	---------------------------------	--------------------

Tables, chairs, and easels provided. Please bring your own supplies

Vaccination required for entry

painting, or printmaking. All skill levels are welcome.

Please Note: Those who use oil paints should bring their own container(s) to remove used solvents.

Odorless solvents only. See more important attendee information at: [Workshop Attendee Responsibilities](https://sketchclub.org)

Thank you to all the PSC members who donate their time and expertise to make these workshops available to PSC members and the Philadelphia art community.

Watch for emails or visit

<https://sketchclub.org> for more details on the still life workshop and holiday cancellations.

The Sketch Club offers in person workshops in compliance with CDC guidelines.

All workshops are open to the public. There is no need to register before attending. You do NOT have to be a member of the Philadelphia Sketch Club to participate in the workshops. Our workshops are open to anyone who is interested in drawing,

Sketch Club Open Workshop Schedule

Workshop Attendee Responsibilities

During this period of returning to normal, we must remember to observe that some may choose be wearing masks and to respect a 6 foot distance.

Fees will be collected after the second pose. \$9 for non-members, \$8 for members, \$6 for full time students.

When setting up, please give space for others behind or in front of you. Make sure those in back can see the model.

Please observe the easel arrangement in the storage closet and replace your easel in the same manner.

Please make every effort to wipe down your easel when leaving and make sure around your easel is clear of charcoal or pastel dust.

Please put back your easel if leaving early. Use the 10-minute rest to clean up.

Please to not use turpentine for oils.

Please do all aerosol spraying outdoors, front or back yard.

If there is a change in the models pose, please inform the monitor instead of the model.

There will be two snacks available each week. The person who brought them will take these home, only coffee and tea will remain in the cabinet.

Please try to come in early to find an optimal spot to work in to reduce disturbance during workshop time.

Anyone who needs a locker or has fees for a locker should talk to Chuck Tarr, usually here on Tuesdays, or contact the office at 215-545-9298.

Thank you for your efforts to make workshops as efficient and rewarding as possible!

Opportunities/Notices

As a courtesy to our non-PSC-member friends, in support of the Philadelphia artist community, we publish your notices, etc., free of charge. However, contributions to the PSC are always welcome. And we will gladly consider your application for membership

[Contribute to the Sketch Club Here](#) [Apply for PSC Membership Here](#)

Diane Tomash had the honor of being accepted into the New Jersey Arts Annual with a Monotype titled "By the Water" This piece portrays dwellings of neighbors in a serene and mysterious setting. Over 100 artists from NJ are participating in this exhibit, which is held in two locations. Opening reception is Saturday, February 4th, from 1:00-4:00 at the Noyes Museum Arts Garage of Stockton University, 2200 Fairmount Ave, Atlantic City, NJ 08037.

Closing Reception is June 3rd from 1:00-4:00 at The Noyes, Hammonton location, 30 Front Street, Hammonton, NJ 08401 Tomash's work is shown there.



By the Water

Gallery hours: By appointment: Wednesday, Friday, Saturday: 1 PM to 5 PM

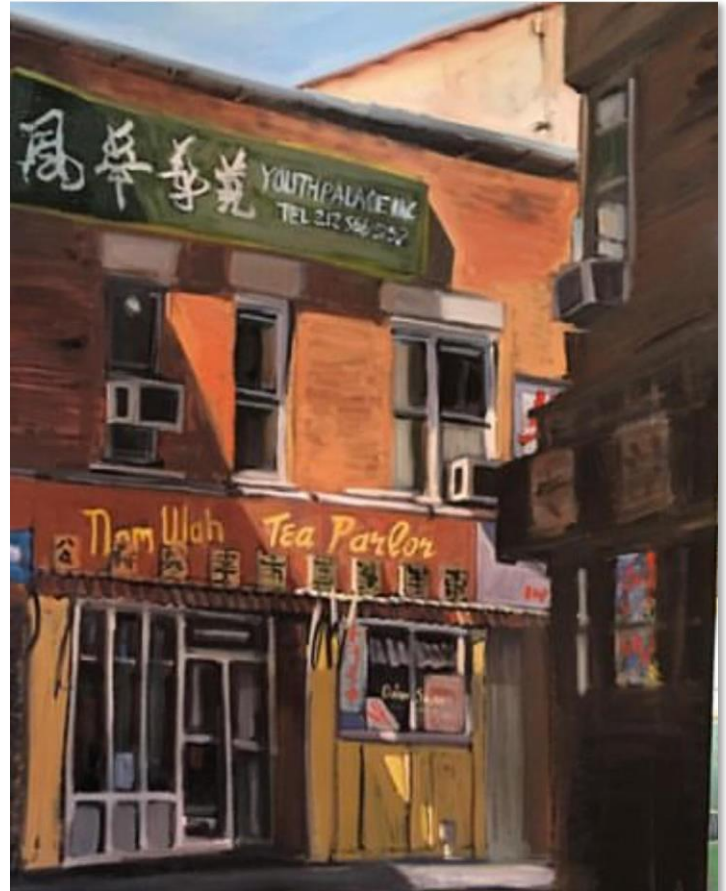
February 2023

Opportunities/Notices

Eric Fowler has two works currently at the Chester County Art Association Members Show. It runs from Jan. 12-Feb 1, 2023.



"Pink Awning"-16 x 24" oil on canvas



"Chinatown"-30 x 24". oil on canvas

Gallery hours: By appointment: Wednesday, Friday, Saturday: 1 PM to 5 PM

February 2023

Opportunities/Notices

CONTEMPORARY STILL LIFE CLASS AT THE CERULEAN ARTS GALLERY



TAUGHT BY ELIZABETH HELLER, PHILADELPHIA PAINTER AND SCULPTOR
[www.https://Elizabethhellerart.com](https://Elizabethhellerart.com)

SIX WEEKS, SATURDAYS, JANUARY 14 - FEBRUARY 18, 10AM - 1 PM.

**LEARN A STEP-BY-STEP PROCESS AS YOU WORK DIRECTLY FROM A
SERIES OF ENGAGING STILL LIFE ARRANGEMENTS AND DEVELOP YOUR
OIL PAINTING SKILLS.**

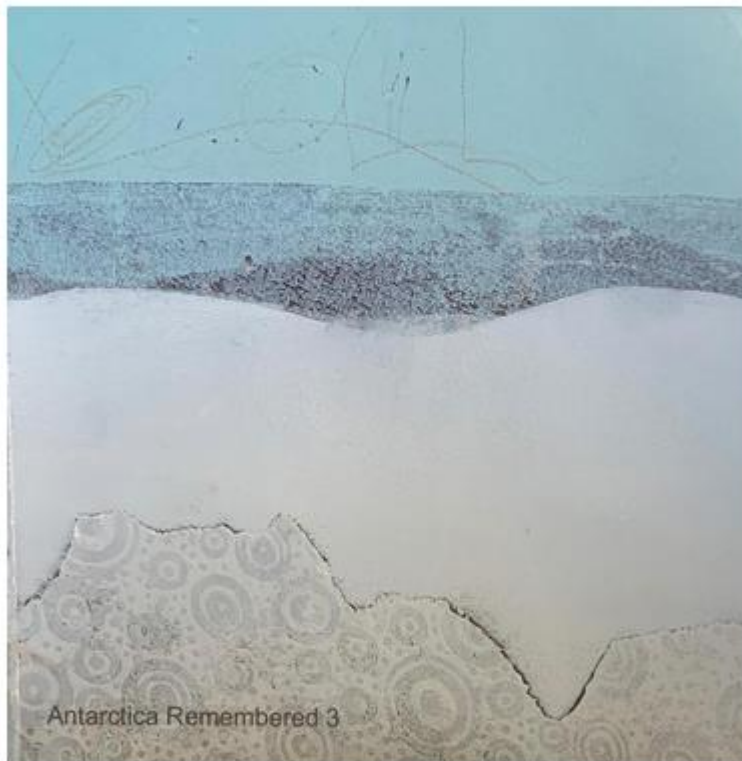
FOR MORE INFORMATION, MATERIALS LIST, AND CLASS SCHEDULE:
[@https://ceruleanarts.com/studio](https://ceruleanarts.com/studio)

Gallery hours: By appointment: Wednesday, Friday, Saturday: 1 PM to 5 PM

February 2023

Opportunities/Notices

Wishing All the Happiest of Holidays! **Linda Dubin Garfield**



Happy winter holiday of
your heritage!!

Linda Dubin Garfield
printmaker/mixed media artist

<https://www.lindadubingarfield.com/>

Membership

Stay in touch with current Sketch Club Members

Don't let sheltering in place prevent you from staying in touch with your Sketch Club friends and colleagues. Sketch Club members can access contact information for all current members. Go to the members only page at: <http://sketchclub.org/members-only-2/>. After you log-in with the password sent to you in your acceptance email you can click on the Membership Directory link to access members contact information. Non-Sketch Club friends can find a listing of current members along with their websites if they have one at: <http://sketchclub.org/sample-page/current-members-contact-list/>:

Not a PSC Member?: Join Now!

If you're reading this edition of the Portfolio and you're not a member of the PSC, you should consider joining the more than 200 other Philadelphia area artists who have. The PSC is one of the most active visual art venues serving center city Philadelphia. The PSC is a hands-on organization that offers its members the opportunity to participate in all aspects of creating and presenting work to the public. It presents over 20 scheduled group and solo exhibitions annually and offers a wide range of daily workshops. [Get info and an application here.](#)

If you are a member of the PSC, please feel free to share the Portfolio with your artist friends and encourage them to become members.

Membership Renewal

You can check the status of your membership by going to the Current Members page on the PSC web-site: <http://sketchclub.org/sample-page/memberspace/>. All current members are listed. An asterisk (*) means that the membership has expired but is within the 60-day grace period for renewal. Names in red are active links to the individual's web site.

Renew Now! <http://sketchclub.org/annual-dues-payment/>

If you have any questions about your membership, please don't hesitate to contact us at membership@sketchclub.org or call the office: 215-545-9298.

Support the Sketch Club

Contribute

Please consider making your tax-deductible contribution now. These funds will be put to good use providing enhanced services to our members and friends.

Membership dues cover only a small portion of the PSC's operating expenses. Competition for funding for arts organizations like the Sketch Club is increasingly competitive and total funding for the arts is shrinking. Your additional support will keep the PSC an active support for visual artists in the Metropolitan Philadelphia area. The Philadelphia Sketch Club is an IRS designated 501(c) (3) non-profit organization.

Gallery hours: By appointment: Wednesday, Friday, Saturday: 1 PM to 5 PM

February 2023

Support the Sketch Club

You can call the office at 215-545-9298, mail checks to the Sketch Club or visit the Contribute page of our website.

Visit our **Contribute** page of our website to give online at:

<http://sketchclub.org/support-us/>

You can also support the PSC on an ongoing basis when you shop on Amazon. Go to:

<http://smile.amazon.com/> and enter the Philadelphia Sketch Club in the Pick your own charitable organization box.

Your support makes it possible for the PSC to continue providing ongoing daily workshops and numerous annual gallery exhibitions.

Amazon Smile is going away – February is the Last Month!

Amazon announces plans to discontinue Amazon Smile charity donations at the end of February 2023. To everyone who has made purchases through Amazon Smile with donations going to the PSC, Thank You!

February is your last month to make your purchases on Amazon contribute to supporting your Club. Details on using Amazon Smile are below.

Like, Link & Share

If you're not following the Philadelphia Sketch Club on Facebook re-tweeting Sketch Club tweets yet, it's time that you did. We have well over 2000 Facebook followers. Get the word out about the Sketch Club. Please click the like button and share your comments and invite your friends to like our page.

Follow @PhilaSketchClub on Twitter, we have almost 400 followers. Please click the heart button and re-tweet our announcements.

Include links on your website, blogs and social media to The Philadelphia Sketch Club to increase traction across social media platforms.

Follow us on Facebook, Twitter and Instagram now!



Classifieds



Your Ad Here... Have something to sell? Looking for something?
Contact portfolio@sketchclub to arrange for posting.



Gallery hours: By appointment: Wednesday, Friday, Saturday: 1 PM to 5 PM

February 2023

The Portfolio: The newsletter of the Philadelphia Sketch Club is published monthly. Editor, technical support, and webmaster: Ken Weiner. Send your member news, announcements and corrections to portfolio@sketchclub.org. The due date for all materials is one week before the end of the month. Back issues of the Portfolio are available at: <http://sketchclub.org/portfolio-archive/>

Thanks to PSC member volunteer **Ken Weiner** for his ongoing support of Sketch Club technology and communications functions.

The Philadelphia Sketch Club

235 S Camac Street
Philadelphia, PA 19107
(215) 545-9298
<http://sketchclub.org/>
gallerymanager@sketchclub.org
info@sketchclub.org

Gallery Manager: Kaylie Minzola

Officers:

- President: Richard Harrington
- Vice President: Kenneth Weiner
- Secretary: Elise Anzini
- Treasurer: William Patterson

Board of Directors

- Renard Edwards
- Stephen Iwanczuk
- Edward Pluciennik
- Charles F. Tarr
- Gail Williams