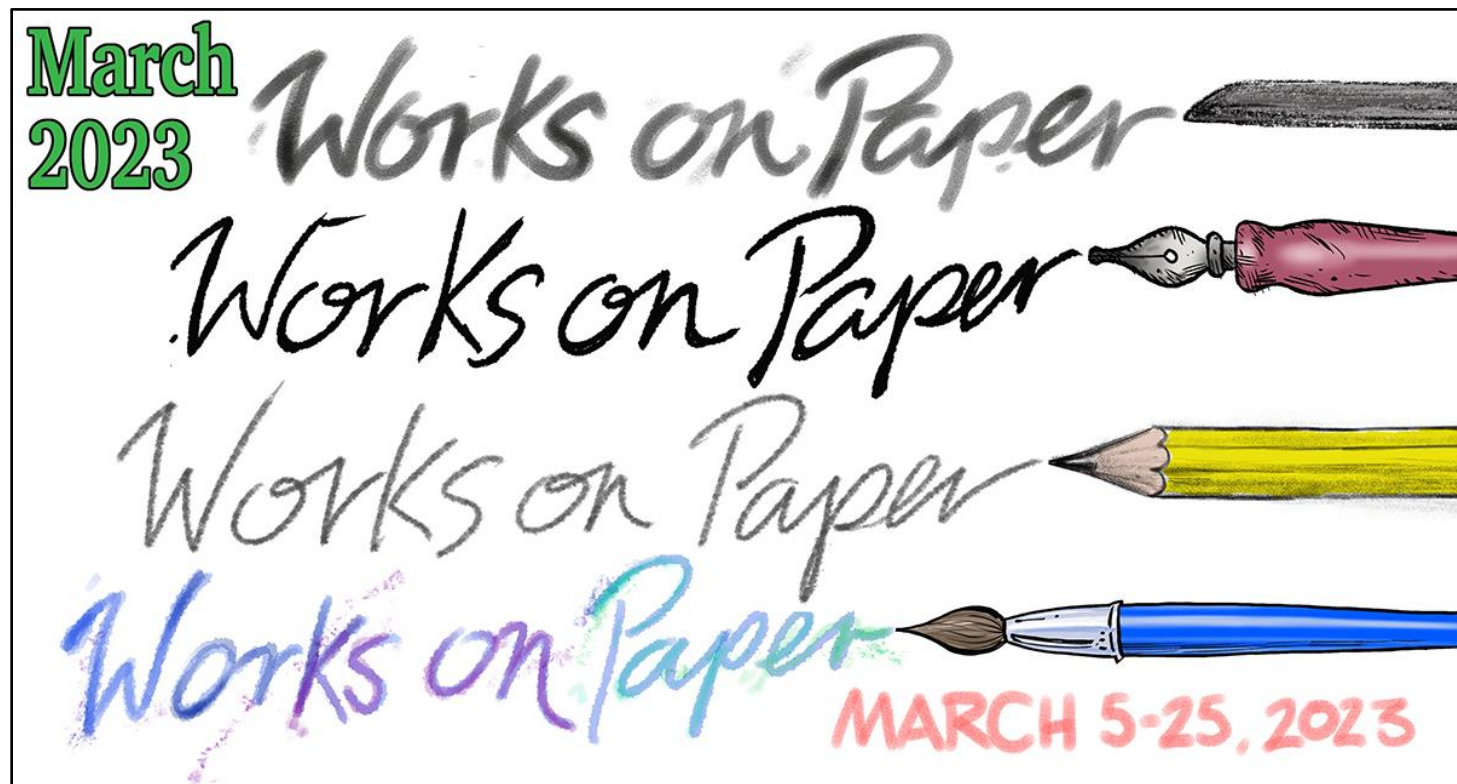


Gallery hours: By appointment: Wednesday, Friday, Saturday: 1 PM to 5 PM

March 2023



Richard Harrington

This Month's Portfolio

Sketch Club Special Events	2
Volunteer	5
Sketch Club Critique Group	6
Main Gallery Events	8
Stewart Gallery Events	9
Sketch Club Open Workshop Schedule	18
Opportunities/Notices	20
Membership	22
Support the Sketch Club	22
Classifieds	23

Send your member news, announcements, and corrections to:
portfolio@sketchclub.org. The deadline for ALL submissions is
1-week before the end of the month.

Reminder: It's never too late. You can always renew
your membership

You may pay online at <http://sketchclub.org/annual-dues-payment/> or mail your check to:

The Philadelphia Sketch Club
235 S. Camac St.

Philadelphia, PA 19107

For questions please contact the Gallery Manager at
215-545-9298 or email:

gallerymanager@sketchclub.org

Late Breaking News – See items that were submitted
after the publication date. Go to:

<http://sketchclub.org/late-breaking-news/>

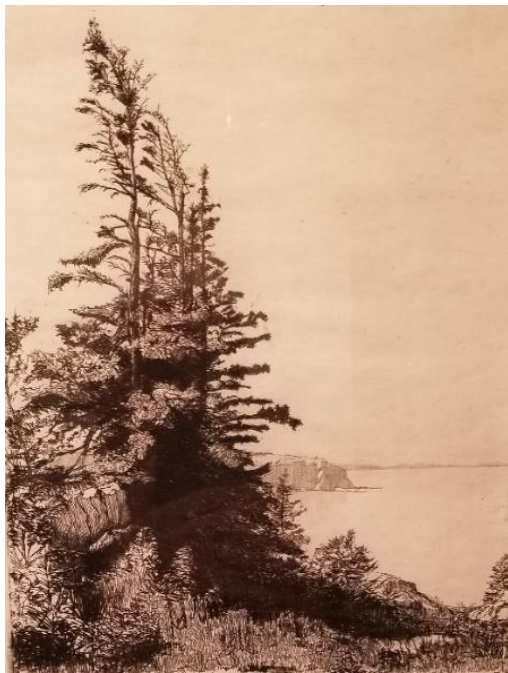
The PSC general email is: [info@sketchclub](mailto:info@sketchclub.org)

Sketch Club Special Events

News at the Club Library

One of the attractions of the present-day Sketch Club is its library. In 1862 the Club Library was established with the members donating books they thought would be useful to an art organization. Many of the early generous contributions to the library were made by James P. Simpson, Joseph P. Reed, Dr. Keffer, S. C. Stambach and Thomas Lipset. A donated etching by James P. Simpson was recently hung in the library to honor the book donors. It should also be noted that H. Devitt Welsh designed a new book plate in 1917 for use in marking and acknowledging donated books. We are currently adding two important collections of art books to the Club Library.

A group of art books belonging to Donald Meyer (1945-2012) were recently donated in his honor by his wife Dianne Meyer. Don was Vice President of the Club for several years and highlights of his career included a one-person show at the Berman Museum and also his works being added to the permanent collection at the Michener Art Museum. The items donated also included five low-profile bookcases with four cubby-holes in each one.



James P. Simpson (1832-1893),
Fir Trees, Grand Menan, 1882, etching.

A group of books belonging to Joseph Crilley (1920-2008) were recently donated in his honor by his wife Suzanne Crilley. Joe was a successful photographer, painter, illustrator and writer. He was a leader of a group of artists known as the "Bucks County Contingent" who were PSC members that car-pooled to Philadelphia each month for the Club's monthly dinner meeting.

The art books donated in honor of Joe Crilley and Don Meyer are in the process of being sorted, cataloged, affixed with Devitt Welsh's book plate and stored in the bookcases in the Stewart room. They will be available for viewing within the next couple of weeks and you may do so in the library or in the Stewart room. My thanks to my wife, Pat Patterson, who did the work in arranging the books.

Sketch Club Special Events

News at the Club Library (continued)

Below are two books we are going to leave on the library table so you can review them as your time permits. One is *200 Years of American Illustration* by Henry C. Pitz. Henry Clarence Pitz (1895-1976) was a noted illustrator who illustrated over 160 books in his career. Pitz was President of the Sketch Club from 1936 to 1939. He passed away in 1976 just before this book was published in 1977. Sketch Club members referenced in this book include Arthur B. Frost, Thornton Oakley, Rockwell Kent, Joseph Pennell, Lyle Justice, Howard Chandler Christy, John Falter, Thomas S. Sullivan, Frank Walter Taylor and N. C. Wyeth. Other connected artists include Edward Percy Moran (son of PSC VP Edward Moran) and Charles Santore who participated in many of our Phillustration Exhibitions.



The other book we will leave on the library table is the book entitled *Phillips' Mill*. This book provides information on this important art colony and exhibition venue. Sketch Club members who participated here include Daniel Garber, Edward Redfield, Charles Frederic Ramsey, Walter Baum, Rae Sloan Bredin, Arthur Edwin Bye, Ranulph Bye, Vincent Ceglia, Charles Coiner, Charles Hargens, Pat Martin, Arthur Meltzer, Joseph Crilley and Robert Beck.

Sketch Club Special Events

Sketch Club On-Line Gallery: **Always Room for More Work!**

There's always room for more work: Submit Now!

The Sketch Club is hosting an on-going open gallery at: <http://sketchclub.org/sketch-club-open-gallery/>. This gallery is open to PSC members and non-members.

Submit up to 4 images of your work or of yourself working along with a very brief description to: portfolio@sketchclub.org.

Include for your work: Your name; Title; size; and medium.

For photos of yourself include: who you are and a brief description of the image.

On-Line Resources

- The Sketch Club Critique Group: <https://www.facebook.com/groups/PSCCritique>
- The Sketch Club Open Gallery: <https://sketchclub.org/sketch-club-open-gallery/>
- The Sketch Club's web site: sketchclub.org
- Our Facebook page: <https://www.facebook.com/thesketchclub/>
- Instagram: <https://www.instagram.com/philadelphiasketch/>
- Twitter: <https://twitter.com/PhilaSketchClub>
- Members: Stay in touch with other PSC colleagues. For contact information, go to the members only page at: <http://sketchclub.org/members-only-2/>. See Stay in touch with current Sketch Club Members in the members section below for instructions.

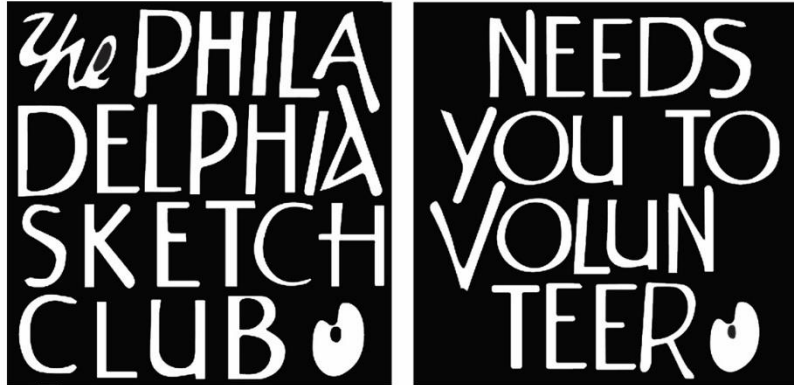
Non-Sketch Club friends can find a listing of current members names and business websites if they have one at:

<http://sketchclub.org/sample-page/current-members-contact-list/>.

Volunteer

Be an Active Sketch Club Member; Volunteer!!

The Philadelphia Sketch Club is managed entirely by volunteers except for the gallery manager, housekeeping, and bookkeeper.



The PSC always needs volunteer members. Volunteering is one of the most important aspects of being a Sketch Club member and it is the one of the best ways to take advantage of the PSC. You'll be working with colleagues who share the same interests and helping the PSC provide unique services to the visual arts community. Sign up for an activity today.

Here are some of the activities that volunteers perform:

- Chair exhibitions
- Assist in hanging exhibitions
- Covering exhibition drop-offs and pick-ups
- Monitor workshops
- Assist with presentations
- Serve on the Board of Directors
- Serve as Key Circle volunteers
- Publish the Portfolio
- Manage the PSC web site
- Gallery coverage
- Graphics for Portfolio, PSC web site, social media
- Assist in every aspect of managing the club and providing member services

To get involved, contact us at: info@sketchclub.org

Gallery hours: By appointment: Wednesday, Friday, Saturday: 1 PM to 5 PM

March 2023

Volunteer

Volunteer: The PSC needs a Chairperson to organize and manage upcoming Sketchclub Exhibitions. Contact our PSC Gallery Manager Kaylie Minzola at gallerymanager@sketchclub.org for details if you are interested.

Volunteers Needed for Gallery Sitting:

Please contact the office gallerymanager@sketchclub.org, or call the office 215-545-9298 Wednesdays and Fridays 11-5pm. Your assistance would be greatly appreciated.

For more information, please contact our Gallery Manager, Kaylie Minzola at:
gallerymanager@sketchclub.org

Sketch Club Critique Group

The Sketch Club Critique FaceBook Group

Join the Critique Facebook Group

Join your Club colleagues online at the "Philadelphia Sketch Club Critique"-- a Private group for Active PSC members only on Facebook.

Colleagues, please join in and contribute to your online art community. We all miss the camaraderie we enjoy at the Club house. The "Philadelphia Sketch Club Critique" is a chance to get together online until we can gather once more around the punch bowl and raise a toast, "to the Sketch Club, past, present and future."



Here's how it works:

- Active members go to the new "Philadelphia Sketch Club Critique" page and request access, which is available to all Club members in good standing.
- Once in post your work and watch as other members' post their artwork for critique.
- More details will be posted within the group including the option to be considered for a monthly "Highlights", a curated online gallery to be published on our external site/Instagram/Twitter channels.

This Facebook Group is private; this means that as Members submit their work others are invited to critique each other in a professional and respectful way.

Critique Group Links:

Sketch Club Critique Group

- You can find a link on the Sketch Club website: <https://sketchclub.org/>
- The Critique Group's Facebook Page: <https://www.facebook.com/groups/PSCCritique>
- The PSC's main FaceBook page: <https://www.facebook.com/thesketchclub>

Art related Internet News Articles

National Geographic Article: These 18 Autochrome Photos Will Transport you to Another Era: The method used to make these dreamy photographs resulted in a painting-like quality that not even today's best Instagram filters can replicate. <https://www.nationalgeographic.com/history/article/autochrome-photography-archive-vintage-history><https://thehustle.co/can-you-get-sued-for-using-a-meme/>

From the Hustle: Can you get sued for using a meme? <https://thehustle.co/can-you-get-sued-for-using-a-meme/>

New venture: Christie's, the prominent auction house, announced it's launched an in-house VC arm called Christie's Ventures, which will focus on art and crypto startups.

<https://www.wsj.com/articles/christies-venture-capital-nft-11657916141?st=lzm39fmeqhkiwu4&reflink=desktopwebshare> [permalink](#)

Can a corporation "own" a color?

<https://thehustle.co/can-a-corporation-trademark-a-color/>

A Humorous take on Art: The Blanton Museum of Art in Austin, Texas, challenged bakers to recreate any of its 21k works of art as cake. See the entries [here](#).

<https://www.smithsonianmag.com/arts-culture/this-museum-is-asking-people-to-remake-famous-artworks-with-cake-180980152/>

<https://www.instagram.com/explore/tags/blantonbakeoff/>

Philly Mural Arts program: Philly has more than 4,000 murals—and counting

<https://www.nationalgeographic.com/travel/article/this-city-has-more-than-4000-murals?>

Women in the arts: The women who redefined color - BBC Culture

<https://www.bbc.com/culture/article/20220401-the-women-who-redefined-colour>

In Memorium: Highlights of the QEII portrait exhibit:

<https://news.artnet.com/art-world/30-portraits-of-queen-elizabeth-ii-332442>

Tax Info for Artists

Sketch Club members might be interested in this summary article with 2022 tax information for freelancers.

-- Submitted by Don Gauger

<https://blog.freelancersunion.org/2022/01/11/whats-new-for-freelancers-in-tax-year-2022/>

Gallery hours: By appointment: Wednesday, Friday, Saturday: 1 PM to 5 PM

March 2023

Main Gallery Events

Gallery Hours: Wednesday, Friday, Saturday 1 to 5pm

[See the Sketch Club Open Gallery](#)

<https://sketchclub.org/exhibition-schedule-2021-2/>

[Important Dates for all PSC Activities](#)

The Sketch Club's 2023 Domenic DiStefano Memorial Works on Paper Exhibition March 5 – 24

Opening Reception: March 5, 1:00 – 3:00 PM

The Philadelphia Sketch Club's 2023 Domenic DiStefano
Memorial Works on Paper Exhibition



2021 Best of Show: Garry Grissom - Ava & Yasin, Cousins

March 5 - 24, 2023



<https://sketchclub.org/works-on-paper-2023/#gallery>

Gallery hours: By appointment: Wednesday, Friday, Saturday: 1 PM to 5 PM

March 2023

Stewart Gallery Events



Exhibition space in the Stewart Gallery is available for PSC Members!

Reserve the gallery by contacting our
Exhibition Coordinator:
exhibitions@sketchclub.org

The space is \$150 for a month. Members can show once in the Stewart Gallery per year.

[See the Sketch Club Open Gallery](https://sketchclub.org/exhibition-schedule-2021-2/)
<https://sketchclub.org/exhibition-schedule-2021-2/>
[Important Dates for all PSC Activities](#)

Gallery hours: By appointment: Wednesday, Friday, Saturday: 1 PM to 5 PM

March 2023

Art Natters: Members News

Visit the Sketch Club Online Gallery

Go to the Sketch Club's on-going open gallery to see recent updates with work by PSC members and friends:

<http://sketchclub.org/sketch-club-open-gallery/>.

Members and friends can submit up to 4 images. Send your submissions to:

portfolio@sketchclub.org.

Include for your work: Your name; Title; size; and medium.

For photos of yourself, include Who you are and a brief description of the image.

From Sketch Club member **Gayle Joseph**

Two Watercolors



A Picture Containing Fruit, Fresh



A Close-up of a Fruit

Art Natters: Members News



Just Off The Easel! "Cocoa Puff", Oil

Commission a Portrait or Landscape...

THE COMMISSION PORTRAITURE PROCESS AND PRICING:

For portraiture, the artist usually likes to do a photoshoot of the child/children/pet, but will also work from photos supplied as long as it is workable. [Read More.](#)

This portrait will also be on display at the Chadds Ford Art Show and Sale this March. See details below.



"Cocoa Puff", 20 x 16", oil on pintura board, Contact the Artist to commission a Pet, Childrens portrait or landscape.

Art Natters: Members News



74th Chadds Ford Art Show and Sale



Bombay Hook National Refuge, 12 x 16, oil on canvas board, framed. Can also be purchased on my website. Click the image.

Visit me at the Chadds Ford Art Show for my annual spring show! I will be showing a variety of works including pet portraiture and landscapes in a variety of sizes and mediums. Also included will be my newest metal prints!

Friday, March 17th, 2023 - 7pm - 10pm (Adults Only)

Saturday, March 18th, 2023 - 10am - 4pm (Family Friendly)

Founded in 1949 by Betsy Wyeth as a fundraiser for Chadds Ford Elementary School, the popular art show will include more than 60 artists from the Brandywine Valley and beyond. Artists showcase a variety of works that satisfy every taste and budget.

Chadds Ford Elementary School
3 Baltimore Pike Chadds Ford, PA 19317
P: 610.388.1112

Gallery hours: By appointment: Wednesday, Friday, Saturday: 1 PM to 5 PM

March 2023

Art Natters: Members News

"Sketch Club Member **Nina Yocom** is featured in a three-person show "Tranquil Vistas: Three Perspectives" at the Darlington Arts Center from March 11 - April 3, 2023. Darlington Arts Center is located in Garnet Valley, PA easily accessible from the Philadelphia, Wilmington and West Chester areas. The exhibition opens on Saturday, March 11, 6:30-7:30. See websites or email Nina for more details.

March 11 - April 3, 2023

Tranquil Vistas: Three Perspectives

The Art of Ivy Egger, Jill Pearson and Nina Yocom

Opening Reception Saturday March 11 6:30-7:30pm Exhibition: March 11th - April 3rd, 2023



Ivy Egger
Five O'Clock Shadows



Jill Pearson
Exhale



Nina Yocom
Singing The Blues

Darlington Arts Center - 977 Shavertown Rd, Garnet Valley, PA 19060
610-358-3632 - www.darlingtonarts.org - M-F 9am-9pm, Sat 9am-4pm

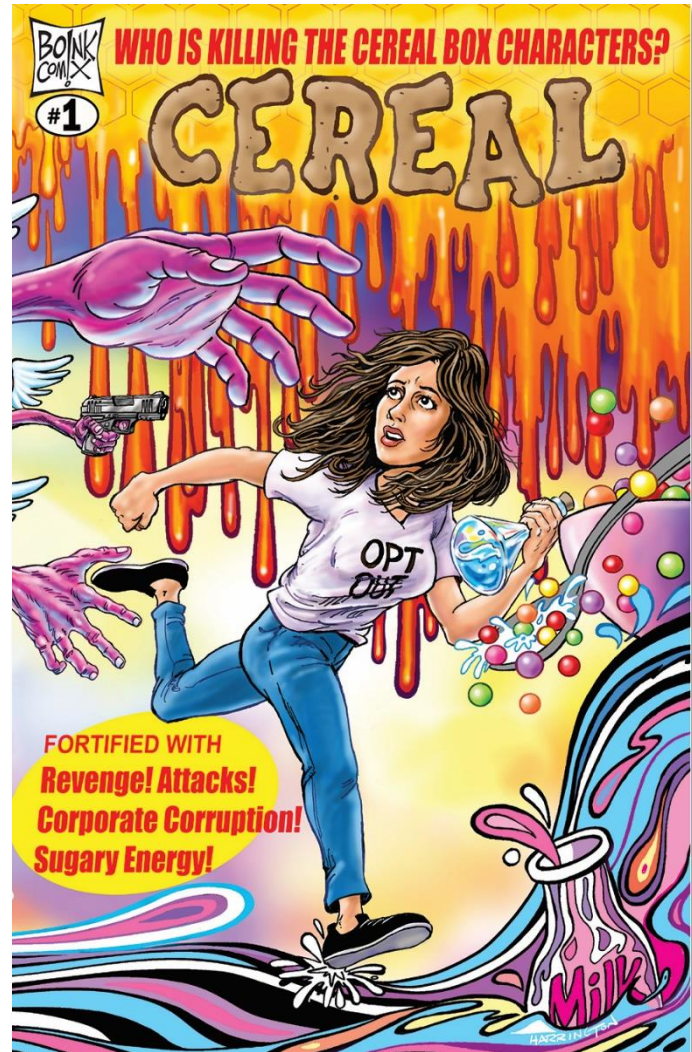


Darlington Arts Center
977 Shavertown Rd, Garnet Valley, PA 19060
Gallery Hours: Mon-Fri 9-9
Sat and Sun 8:30-4:30

Nina Yocom: ninayocom@gmail.com
<https://www.ninayocom.com/>
<https://www.darlingtonarts.org/>

Art Natters: Members News

Sketch Club member **Rich Harrington** has illustrated a comic book, collaborating with Don Steinberg, a longtime journalist and New Yorker humor writer. CEREAL is a murder mystery, business satire, and comic fantasy -- and may be the first comic book series ever set in the breakfast cereal world! The hero is a genius cereal inventor on the verge of a game-changing breakthrough. She starts receiving desperate messages from the cereal box cartoon characters, who are being violently killed off. Rich and Don created a fake cereal company filled with corrupt executives, as well as dozens of crazy cereals and characters. Issue #1 of CEREAL is available at boinkcomix.com.



Gallery hours: By appointment: Wednesday, Friday, Saturday: 1 PM to 5 PM

March 2023

Art Natters: Members News

Sketch Club Member **Nina Yocom** is featured in a new collaboration between The Plastic Club and Off the Wall Gallery at Dirty Frank's "New Faces of '23". Nina's artwork will be on display at the exhibition through March 3, 2023.

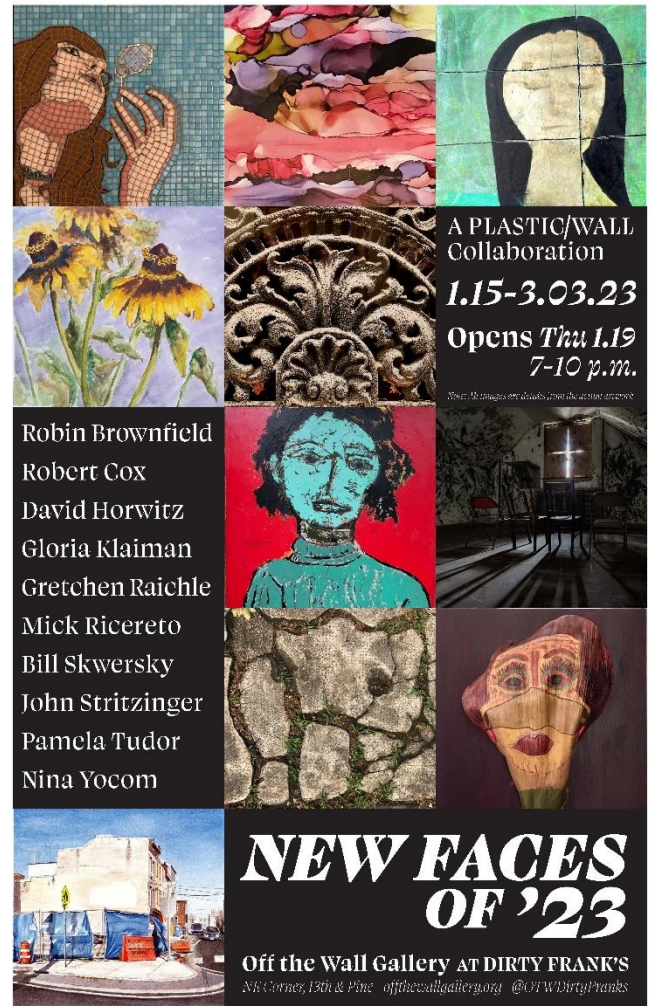
To view this exhibition online:

<https://www.offthewallgallery.org/>

<https://www.ninayocom.com/>



Smoky Blues - Framed 20 X 16 - Alcohol Ink on Yupo



Dirty Frank's is located at the corner of 13th and Pine, 347 S 13th St, Philadelphia, PA 19107.

Gallery hours: By appointment: Wednesday, Friday, Saturday: 1 PM to 5 PM

March 2023

Art Natters: Members News

From Sketch Club member **John Deitz**



Whitney's Birthday Bash - iPad sketch



Steganographic artwork by Don Gauger,
"KNOWLEDGE IS POWER"

Sketch Club member and Sketch Club Critique Group Monitor **Don Gauger** won first place and a gallery show at the National Cryptologic Museum.

The National Cryptologic Museum had an unusual art contest: design original artwork that contained a hidden message "Knowledge is Power." Hiding messages in art is also known as Steganography.

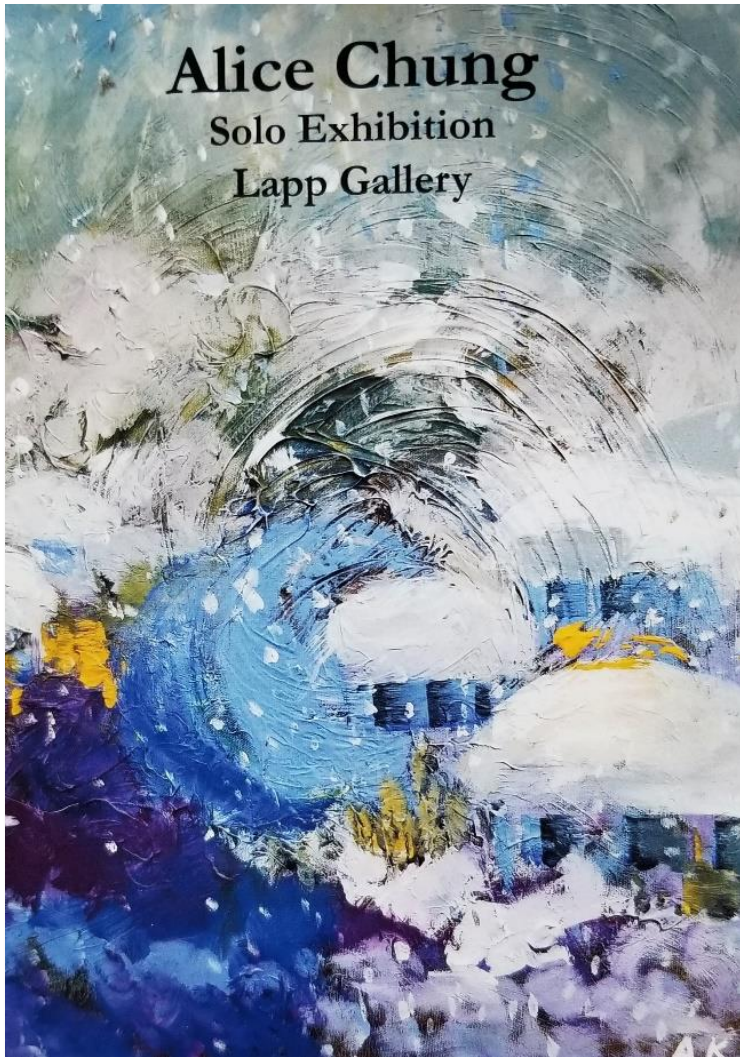
Don's artwork, with solution, is on display for six months. The museum is located in Annapolis Junction, MD. Photos of the museum's grand reopening reception are posted https://www.graylandstudio.com/an-occasional-journal/blog_posts/an-unusual-exhibition-opens-at-the-ncmat: The solution will be posted in six months.

Gallery hours: By appointment: Wednesday, Friday, Saturday: 1 PM to 5 PM

March 2023

Art Natters: Members News

From Sketch Club member **Alice Chung**



Alice Chung
Solo Exhibition
Lapp Gallery

Jan 3, to March 3, 2023

Lapp Gallery at Mennonite Heritage Center
565 Yoder Rd, Harleysville, PA 19438

Gallery Hours: Tues – Friday, 10am to 3pm
Sat 10am to 2pm

Contact: (215) 256-3020

info@mhep.org

Alice Chung: akchung1213@gmail.com
www.alicechungartist.com

Sketch Club Open Workshop Schedule

Welcome Back!

Sketchclub.org • (215) 545-9298 • 235 S Camac St, Philadelphia, PA 19107

Workshops

Fees

\$10 Model Workshop sessions, \$9 for members

\$6 for full time students

Model Tips are optional but appreciated

Bring your drawing and painting materials!



Life Model

Monday	6:30 pm - 9:30 pm Extended pose	Monitor: Bob Bohne
Tuesday	12:00 pm - 3:00 pm Extended pose	Monitor: Volunteer
Wednesday	6:30 pm - 9:30 pm Extended pose	Monitor: Andrew Gonsi
Saturday	9:30am- 12:30pm Extended pose	Monitor: Tiger Jaser

Costumed Model

Thursday	12:00pm-3:00pm Extended pose	Monitor: Bob Bohne
----------	---------------------------------	--------------------

Tables, chairs, and easels provided. Please bring your own supplies

Vaccination required for entry

painting, or printmaking. All skill levels are welcome.

Please Note: Those who use oil paints should bring their own container(s) to remove used solvents.

Odorless solvents only. See more important attendee information at: [Workshop Attendee Responsibilities](https://sketchclub.org)

Thank you to all the PSC members who donate their time and expertise to make these workshops available to PSC members and the Philadelphia art community.

Watch for emails or visit

<https://sketchclub.org> for more details on the still life workshop and holiday cancellations.

The Sketch Club offers in person workshops in compliance with CDC guidelines.

All workshops are open to the public. There is no need to register before attending. You do NOT have to be a member of the Philadelphia Sketch Club to participate in the workshops. Our workshops are open to anyone who is interested in drawing,

Sketch Club Open Workshop Schedule

Workshop Attendee Responsibilities

During this period of returning to normal, we must remember to observe that some may choose be wearing masks and to respect a 6 foot distance.

Fees will be collected after the second pose. \$9 for non-members, \$8 for members, \$6 for full time students.

When setting up, please give space for others behind or in front of you. Make sure those in back can see the model.

Please observe the easel arrangement in the storage closet and replace your easel in the same manner.

Please make every effort to wipe down your easel when leaving and make sure around your easel is clear of charcoal or pastel dust.

Please put back your easel if leaving early. Use the 10-minute rest to clean up.

Please to not use turpentine for oils.

Please do all aerosol spraying outdoors, front or back yard.

If there is a change in the models pose, please inform the monitor instead of the model.

There will be two snacks available each week. The person who brought them will take these home, only coffee and tea will remain in the cabinet.

Please try to come in early to find an optimal spot to work in to reduce disturbance during workshop time.

Anyone who needs a locker or has fees for a locker should talk to Chuck Tarr, usually here on Tuesdays, or contact the office at 215-545-9298.

Thank you for your efforts to make workshops as efficient and rewarding as possible!

Opportunities/Notices

As a courtesy to our non-PSC-member friends, in support of the Philadelphia artist community, we publish your notices, etc., free of charge. However, contributions to the PSC are always welcome. And we will gladly consider your application for membership

[Contribute to the Sketch Club Here](#) [Apply for PSC Membership Here](#)

Diane Tomash had the honor of being accepted into the New Jersey Arts Annual with a Monotype titled "By the Water" This piece portrays dwellings of neighbors in a serene and mysterious setting. Over 100 artists from NJ are participating in this exhibit, which is held in two locations. Opening reception is Saturday, February 4th, from 1:00-4:00 at the Noyes Museum Arts Garage of Stockton University, 2200 Fairmount Ave, Atlantic City, NJ 08037.

Closing Reception is June 3rd from 1:00-4:00 at The Noyes, Hammonton location, 30 Front Street, Hammonton, NJ 08401 Tomash's work is shown there.



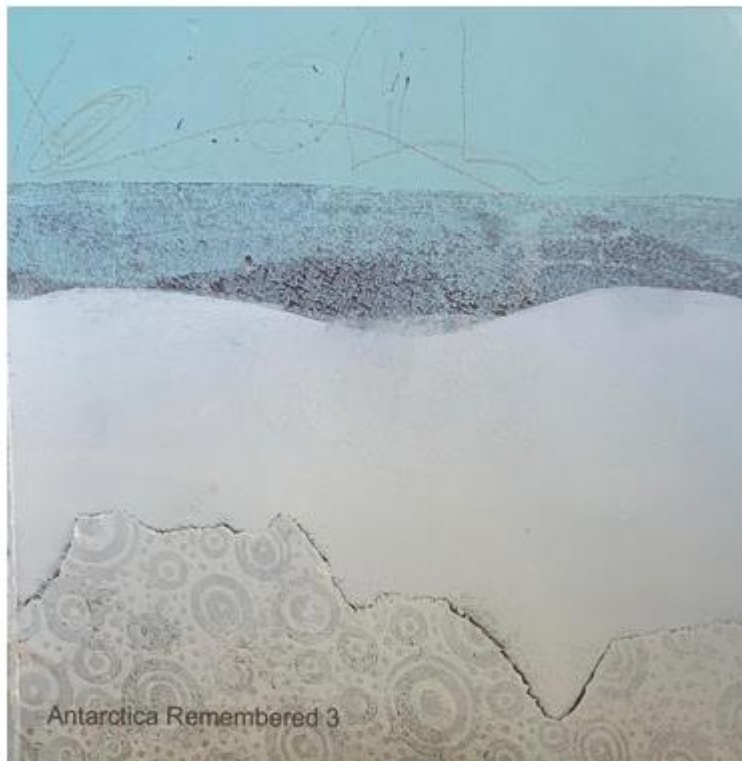
By the Water

Gallery hours: By appointment: Wednesday, Friday, Saturday: 1 PM to 5 PM

March 2023

Opportunities/Notices

Wishing All the Happiest of Holidays! **Linda Dubin Garfield**



Happy winter holiday of
your heritage!!

Linda Dubin Garfield
printmaker/mixed media artist

<https://www.lindadubingarfield.com/>

Membership

Stay in touch with current Sketch Club Members

Don't let sheltering in place prevent you from staying in touch with your Sketch Club friends and colleagues. Sketch Club members can access contact information for all current members. Go to the members only page at: <http://sketchclub.org/members-only-2/>. After you log-in with the password sent to you in your acceptance email you can click on the Membership Directory link to access members contact information. Non-Sketch Club friends can find a listing of current members along with their websites if they have one at: <http://sketchclub.org/sample-page/current-members-contact-list/>:

Not a PSC Member?: Join Now!

If you're reading this edition of the Portfolio and you're not a member of the PSC, you should consider joining the more than 200 other Philadelphia area artists who have. The PSC is one of the most active visual art venues serving center city Philadelphia. The PSC is a hands-on organization that offers its members the opportunity to participate in all aspects of creating and presenting work to the public. It presents over 20 scheduled group and solo exhibitions annually and offers a wide range of daily workshops. [Get info and an application here.](#)

If you are a member of the PSC, please feel free to share the Portfolio with your artist friends and encourage them to become members.

Membership Renewal

You can check the status of your membership by going to the Current Members page on the PSC web-site: <http://sketchclub.org/sample-page/memberspace/>. All current members are listed. An asterisk (*) means that the membership has expired but is within the 60-day grace period for renewal. Names in red are active links to the individual's web site.

Renew Now! <http://sketchclub.org/annual-dues-payment/>

If you have any questions about your membership, please don't hesitate to contact us at membership@sketchclub.org or call the office: 215-545-9298.

Support the Sketch Club

Contribute

Please consider making your tax-deductible contribution now. These funds will be put to good use providing enhanced services to our members and friends.

Membership dues cover only a small portion of the PSC's operating expenses. Competition for funding for arts organizations like the Sketch Club is increasingly competitive and total funding for the arts is shrinking. Your additional support will keep the PSC an active support for visual artists in the Metropolitan Philadelphia area. The Philadelphia Sketch Club is an IRS designated 501(c) (3) non-profit organization.

Gallery hours: By appointment: Wednesday, Friday, Saturday: 1 PM to 5 PM

March 2023

Support the Sketch Club

You can call the office at 215-545-9298, mail checks to the Sketch Club or visit the Contribute page of our website.

Visit our **Contribute** page of our website to give online at:

<http://sketchclub.org/support-us/>

You can also support the PSC on an ongoing basis when you shop on Amazon. Go to:

<http://smile.amazon.com/> and enter the Philadelphia Sketch Club in the Pick your own charitable organization box.

Your support makes it possible for the PSC to continue providing ongoing daily workshops and numerous annual gallery exhibitions.

Amazon Smile is going away – February is the Last Month!

Amazon announces plans to discontinue Amazon Smile charity donations at the end of February 2023. To everyone who has made purchases through Amazon Smile with donations going to the PSC, Thank You!

February is your last month to make your purchases on Amazon contribute to supporting your Club. Details on using Amazon Smile are below.

Like, Link & Share

If you're not following the Philadelphia Sketch Club on Facebook re-tweeting Sketch Club tweets yet, it's time that you did. We have well over 2000 Facebook followers. Get the word out about the Sketch Club. Please click the like button and share your comments and invite your friends to like our page.

Follow @PhilaSketchClub on Twitter, we have almost 400 followers. Please click the heart button and re-tweet our announcements.

Include links on your website, blogs and social media to The Philadelphia Sketch Club to increase traction across social media platforms.

Follow us on Facebook, Twitter and Instagram now!



Classifieds



Your Ad Here... Have something to sell? Looking for something?
Contact portfolio@sketchclub to arrange for posting.



Gallery hours: By appointment: Wednesday, Friday, Saturday: 1 PM to 5 PM

March 2023

The Portfolio: The newsletter of the Philadelphia Sketch Club is published monthly. Editor, technical support, and webmaster: Ken Weiner. Send your member news, announcements and corrections to portfolio@sketchclub.org. The due date for all materials is one week before the end of the month.

Back issues of the Portfolio are available at: <http://sketchclub.org/portfolio-archive/>

Thanks to PSC member volunteer **Ken Weiner** for his ongoing support of Sketch Club technology and communications functions.

The Philadelphia Sketch Club

235 S Camac Street
Philadelphia, PA 19107
(215) 545-9298
<http://sketchclub.org/>
gallerymanager@sketchclub.org
info@sketchclub.org

Gallery Manager: Kaylie Minzola

Officers:

- President: Richard Harrington
- Vice President: Kenneth Weiner
- Secretary: Elise Anzini
- Treasurer: William Patterson

Board of Directors

- Renard Edwards
- Stephen Iwanczuk
- Edward Pluciennik
- Charles F. Tarr
- Gail Williams