



Sketch Club member **David Rodstein**

## This Month's Portfolio

Sketch Club Special Events: Annual Members Meeting	2
Volunteer	4
Sketch Club Critique Group	5
Main Gallery Events	7
Stewart Gallery Events	9
Art Natters: Members News	10
Sketch Club Open Workshop Schedule	18
Opportunities/Notices	20
Membership	26
Support the Sketch Club	26
Classifieds	27

Send your member news, announcements, and corrections to: [portfolio@sketchclub.org](mailto:portfolio@sketchclub.org). The deadline for ALL submissions is 1-week before the end of the month.

Reminder: It's never too late. You can always renew your membership

You may pay online at <http://sketchclub.org/annual-dues-payment/> or mail your check to:

The Philadelphia Sketch Club  
235 S. Camac St.

Philadelphia, PA 19107

For questions please contact the Gallery Manager at 215-545-9298 or email:

[gallerymanager@sketchclub.org](mailto:gallerymanager@sketchclub.org)

Late Breaking News – See items that were submitted after the publication date. Go to:

<http://sketchclub.org/late-breaking-news/>

The PSC general email is: [info@sketchclub](mailto:info@sketchclub)

## Sketch Club Special Events: Annual Members Meeting

### Notice: Annual Members Meeting June 9<sup>th</sup>, 2023

**The election will be held during the annual members meeting at the Philadelphia Sketch Club Friday June 9th, 2023. Watch for meeting details.**

### **Current members, consider joining the PSC Board of Directors**

The Philadelphia Sketch Club is seeking eligible members to become elected officers and non-officer board members.

Officers are President of the Philadelphia Sketch Club, Vice-President, Treasurer, and Club Secretary. Officers serve a "One Year" term.

Non-officer Board members serve on the Board of directors for a "Two Year" term. Non-board officers meet with the Officers once a month, the third Tuesday of each month at 7:00pm. The meetings are currently held via ZOOM video conferencing. A meeting notice is sent out a few days before the Board meeting that contains the Zoom link address to log into the Board meeting. In addition, an Agenda is provided that outlines items relevant to the Board. The agenda typically consists of voting on new members, scheduling exhibits, the Club's building, and Grants, among other things. The meetings last about One Hour. Sometimes a few minutes extra.

This is a great opportunity to help guide the Philadelphia Sketch Club's future and to provide a valuable service to the Philadelphia Art community.

To be eligible, you must be a Philadelphia Sketch Member, in good standing, for at least one year.

Candidate Inquires should be made to the Club's Election chairperson, Michael Fernandez, at [michaelanthonyfernandez@yahoo.com](mailto:michaelanthonyfernandez@yahoo.com).

See the current board: <https://sketchclub.org/board-of-directors/>

## Sketch Club Special Events: Annual Members Meeting

### Sketch Club On-Line Gallery: **Always Room for More Work!**

There's always room for more work: Submit Now!

The Sketch Club is hosting an on-going open gallery at: <http://sketchclub.org/sketch-club-open-gallery/>. This gallery is open to PSC members and non-members.

Submit up to 4 images of your work or of yourself working along with a very brief description to: [portfolio@sketchclub.org](mailto:portfolio@sketchclub.org).

Include for your work: Your name; Title; size; and medium.

For photos of yourself include who you are and a brief description of the image.

### On-Line Resources

- The Sketch Club Critique Group: <https://www.facebook.com/groups/PSCCritique>
- The Sketch Club Open Gallery: <https://sketchclub.org/sketch-club-open-gallery/>
- The Sketch Club's web site: [sketchclub.org](http://sketchclub.org)
- Our Facebook page: <https://www.facebook.com/thesketchclub/>
- Instagram: <https://www.instagram.com/philadelphiasketch/>
- Twitter: <https://twitter.com/PhilaSketchClub>
- Members: Stay in touch with other PSC colleagues. For contact information, go to the members only page at: <http://sketchclub.org/members-only-2/>. See Stay in touch with current Sketch Club Members in the members section below for instructions.

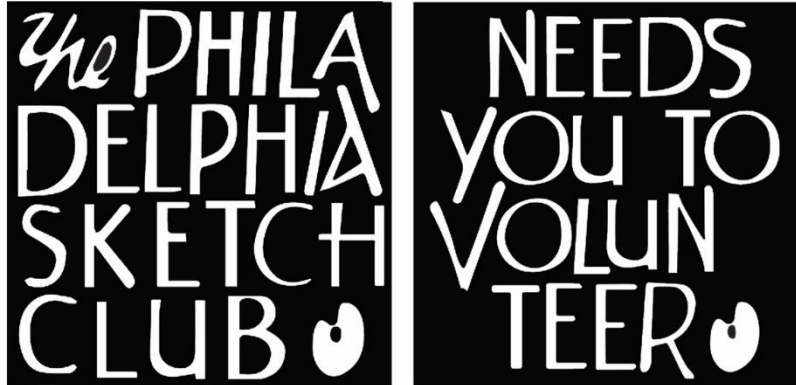
**Non-Sketch Club friends can find a listing of current members names and business websites if they have one at:**

<http://sketchclub.org/sample-page/current-members-contact-list/>.

## Volunteer

### Be an Active Sketch Club Member; Volunteer!!

The Philadelphia Sketch Club is managed entirely by volunteers except for the gallery manager, housekeeping, and bookkeeper.



The PSC always needs volunteer members. Volunteering is one of the most important aspects of being a Sketch Club member and it is the one of the best ways to take advantage of the PSC. You'll be working with colleagues who share the same interests and helping the PSC provide unique services to the visual arts community. Sign up for an activity today.

Here are some of the activities that volunteers perform:

- Chair exhibitions
- Assist in hanging exhibitions
- Covering exhibition drop-offs and pick-ups
- Monitor workshops
- Assist with presentations
- Serve on the Board of Directors
- Serve as Key Circle volunteers
- Publish the Portfolio
- Manage the PSC web site
- Gallery coverage
- Graphics for Portfolio, PSC web site, social media
- Assist in every aspect of managing the club and providing member services

To get involved, contact us at: [info@sketchclub.org](mailto:info@sketchclub.org)

**Volunteer: The PSC needs a Chairperson** to organize and manage upcoming Sketchclub Exhibitions. Contact our PSC Gallery Manager Kaylie Minzola at [gallerymanager@sketchclub.org](mailto:gallerymanager@sketchclub.org) for details if you are interested.

## Volunteer

### Volunteers Needed for Gallery Sitting:

Please contact the office [gallerymanager@sketchclub.org](mailto:gallerymanager@sketchclub.org), or call the office 215-545-9298 Wednesdays and Fridays 11-5pm. Your assistance would be greatly appreciated.

For more information, please contact our Gallery Manager, Kaylie Minzola at:  
[gallerymanager@sketchclub.org](mailto:gallerymanager@sketchclub.org)

## Sketch Club Critique Group

### The Sketch Club Critique FaceBook Group

#### Join the Critique Facebook Group

Join your Club colleagues online at the "Philadelphia Sketch Club Critique"-- a Private group for Active PSC members only on Facebook.

Colleagues, please join in and contribute to your online art community. We all miss the camaraderie we enjoy at the Club house. The "Philadelphia Sketch Club Critique" is a chance to get together online until we can gather once more around the punch bowl and raise a toast, "to the Sketch Club, past, present and future."

#### Here's how it works:

- Active members go to the new "Philadelphia Sketch Club Critique" page and request access, which is available to all Club members in good standing.
- Once in post your work and watch as other members' post their artwork for critique.
- More details will be posted within the group including the option to be considered for a monthly "Highlights", a curated online gallery to be published on our external site/Instagram/Twitter channels.

This Facebook Group is private; this means that as Members submit their work others are invited to critique each other in a professional and respectful way.

#### Critique Group Links:

- You can find a link on the Sketch Club website: <https://sketchclub.org/>
- The Critique Group's Facebook Page: <https://www.facebook.com/groups/PSCCritique>
- The PSC's main FaceBook page: <https://www.facebook.com/thesketchclub>





## Sketch Club Critique Group

### Art related Internet News Articles

**National Geographic Article: These 18 Autochrome Photos Will Transport you to Another Era:** The method used to make these dreamy photographs resulted in a painting-like quality that not even today's best Instagram filters can replicate. <https://www.nationalgeographic.com/history/article/autochrome-photography-archive-vintage-history><https://thehustle.co/can-you-get-sued-for-using-a-meme/>

From the Hustle: Can you get sued for using a meme? <https://thehustle.co/can-you-get-sued-for-using-a-meme/>

**New venture:** Christie's, the prominent auction house, announced it's launched an in-house VC arm called Christie's Ventures, which will focus on art and crypto startups.

<https://www.wsj.com/articles/christies-venture-capital-nft-11657916141?st=lzm39fmeHQkiwu4&reflink=desktopwebshare> [permalink](#)

**Can a corporation "own" a color?**

<https://thehustle.co/can-a-corporation-trademark-a-color/>

**A Humorous take on Art:** The Blanton Museum of Art in Austin, Texas, challenged bakers to recreate any of its 21k works of art as cake. See the entries [here](#).

<https://www.smithsonianmag.com/arts-culture/this-museum-is-asking-people-to-remake-famous-artworks-with-cake-180980152/>

<https://www.instagram.com/explore/tags/blantonbakeoff/>

**Philly Mural Arts program:** Philly has more than 4,000 murals—and counting

<https://www.nationalgeographic.com/travel/article/this-city-has-more-than-4000-murals?>

**Women in the arts:** The women who redefined color - BBC Culture

<https://www.bbc.com/culture/article/20220401-the-women-who-redefined-colour>

**In Memorium: Highlights of the QEII portrait exhibit:**

<https://news.artnet.com/art-world/30-portraits-of-queen-elizabeth-ii-332442>

### Tax Info for Artists

Sketch Club members might be interested in this summary article with 2022 tax information for freelancers.

-- Submitted by Don Gauger

<https://blog.freelancersunion.org/2022/01/11/whats-new-for-freelancers-in-tax-year-2022/>

## Main Gallery Events

**Gallery Hours: Wednesday, Friday, Saturday 1 to 5pm**

[See the Sketch Club Open Gallery](https://sketchclub.org/exhibition-schedule-2023/)  
<https://sketchclub.org/exhibition-schedule-2023/>  
[Important Dates for all PSC Activities](#)

## The 158th Annual Exhibition of Small Oil Paintings

**Reception: Sunday May 21st, 1- 3 pm.**

- **Show Chair:**  
Richard Harrington
- **Juror:**  
Garth Herrick
- **Gallery Manager:**  
Kaylie Minzola

The Philadelphia Sketch Club  
235 South Camac Street  
Philadelphia PA 19107  
215-545-9298 - [www.sketchclub.org](http://www.sketchclub.org)



2022, 1st place, Joe Danciger, *October Tacos*

# 159th Exhibition of Small Oil Paintings

## May 5th- May 21st

**See the online gallery:**

<https://sketchclub.org/159th-annual-exhibition-of-small-oil-paintings/#gallery>

## Main Gallery Events

### The 2023 Workshop Exhibition: Call for Entries

CALL FOR ENTRIES  
PSC WORKSHOP 2023  
JUNE 2nd — JUNE 18th

FREE  
UNJURIED  
SHOW

SEE PROSPECTUS  
FOR DETAILS

JOE IN ACTION BY SPIKOL

#### Delivery Deadline:

Wednesday May 31st, 2023

For complete details, see  
the prospectus:

[Prospectus](#)

See the Sign-in Sheet:

[Sign in sheet](#)



## Stewart Gallery Events



**Exhibition space in the Stewart Gallery is available for PSC Members!**

Reserve the gallery by contacting our Exhibition Coordinator:  
exhibitions@sketchclub.org

The space is \$150 for a month. Members can show once in the Stewart Gallery per year.

**[See the Sketch Club Open Gallery](https://sketchclub.org/exhibition-schedule-2023/)**  
**<https://sketchclub.org/exhibition-schedule-2023/>**  
**[Important Dates for all PSC Activities](#)**

## Art Natters: Members News

### Visit the Sketch Club Online Gallery

Go to the Sketch Club's on-going open gallery to see recent updates with work by PSC members and friends:

<http://sketchclub.org/sketch-club-open-gallery/>.

Members and friends can submit up to 4 images. Send your submissions to:

[portfolio@sketchclub.org](mailto:portfolio@sketchclub.org).

Include for your work: Your name; Title; size; and medium.

For photos of yourself, include Who you are and a brief description of the image.

### This Month's Banner Artist

Sketch Club member **David Ridstein** has an extensive lighting design background that integrates with his photography. Style can be described as a trio of subject matter, composition, and lighting which evokes the emotions of the viewer. Rodstein has studied photography under Judy Linn, who was in the creative circle of Robert Mapplethorpe and Patti Smith, photographer George Knoblach: a muse and critic, who specialized in underwater photography and portraiture of Hollywood celebrities.



## Art Natters: Members News

From Sketch Club member **Su Horty**:

Please join us at the **Opening Reception** for a group exhibition at **Hot Bed Philly on April 22, 2023**. There will also be an **Artist Panel**, date to be announced, and a **Closing Reception on May 20, 2023**. Both receptions run from 6:00 to 9:00PM. Hot Bed is located at 723 Chestnut St., 2<sup>nd</sup> Fl.

Several paintings from my *Color Pops* series will be hanging. Thank you, Hot Bed!

[www.suknollhorty.com](http://www.suknollhorty.com) for more information.

### UPDATE!

Save the date for the **Closing Reception of *Leading a Colorful Life***, a group exhibition at **Hot Bed Philly on May 27, 2023, 6-9PM**.

There will also be an **Artist Panel, on May 5<sup>th</sup> from 6:30 until 7:30**. Hot Bed is located at 723 Chestnut St., 2<sup>nd</sup> Fl.

Several paintings from my *Color Pops* series will be hanging. Thank you, Hot Bed!



Color Pops 20; Oil on canvas; 18" X 24"; 2017

## Art Natters: Members News

Sketch Club member **William Kosman** today announced an exhibit of his works entitled "One Painter – Two Worlds" at the dance center the Performance Garage at 1515 Brandywine Street, Philadelphia, PA 19130 from April 24 to May 8, 2023. The opening reception for the exhibit will be held from 5 to 8 pm on April 24<sup>th</sup>.

The exhibit will include landscapes of the Normandy, France, countryside and urban scenes of Philadelphia showing residents of different ethnic groups together.

The exhibit will be held in conjunction with the Performance Garage's annual gala April 29<sup>th</sup> honoring Anne Ewers, the recently retired president and CEO of the Kimmel Center, Inc., and featuring the live auction of one of Kosman's paintings, "Gathering."

"I'm really honored that my painting 'Gathering' has been selected as one of the items in the live auction during the gala," Kosman said. "With its dance classes, performances and other initiatives, the Performance Garage truly adds to the cultural richness of Philadelphia."

"William Kosman's paintings transport us from the Performance Garage's nineteenth-century horse-stable walls on a journey exploring the worlds of Philadelphia, PA, and Normandy, France," said Matthew F. Lewandowski II, managing director. "We are thrilled to have Kosman's artistry hanging at the Garage and telling these stories as part of our ArtMoves Programing."

Kosman's art work can be viewed at: [www.williamkosman.blogspot.com](http://www.williamkosman.blogspot.com) and [www.williamkosman.com](http://www.williamkosman.com), and his novels can be read at [www.kosmanfiction.blogspot.com](http://www.kosmanfiction.blogspot.com), and he can be contacted at [billkosman@gmail.com](mailto:billkosman@gmail.com) and 215-280-9580. His rap videos can be viewed at [www.youtube.com/billkosman](http://www.youtube.com/billkosman)



## Art Natters: Members News

Sketch Club member **Dan Cook** was awarded First Place in the Penn Institute for Urban Research photo contest on "Thriving" for "Wall of Hope" ( <https://penniuur.upenn.edu/press-room/announcements/2022-penn-iur-photo-contest-winners> ), a piece that also had received Honorable Mention for the Sketch Club's PHOTOgraphy 2021 show. Cook had a photo, "Waning Gibbous," included in *ArtAscent* magazine's "Portraits" issue (Jan '23). He also delivered the Robin M. Williams, Jr. Distinguished Lecture to the Eastern Sociological Society on "Sights in Common: Ruminations Between Photography and Sociology" in February.



Wall with Hope

## Art Natters: Members News

Sketch Club Member **Nina Yocom** will be featured during the annual Chester County Studio Tour the weekend of May 20-21 in Exton, PA. As part of this weekend exhibition, she will be conducting a live demonstration of her alcohol ink process on Saturday, May 20, from 1-2 PM.

Saturday, May 20, 10-6

Sunday, May 21, 11-5

### Tranquil Vistas: Three Perspectives

The Art of Ivy Egger, Jill Pearson and Nina Yocom

Opening Reception Saturday March 11 6:30-7:30pm Exhibition: March 11th - April 3rd, 2023



**Ivy Egger**

*Five O'Clock Shadows*



**Jill Pearson**

*Exhale*



**Nina Yocom**

*Singing The Blues*

Darlington Arts Center - 977 Shavertown Rd, Garnet Valley, PA 19060  
610-358-3632 - [www.darlingtonarts.org](http://www.darlingtonarts.org) - M-F 9am-9pm, Sat 9am-4pm



Darlington Arts Center  
977 Shavertown Rd, Garnet Valley, PA 19060  
Gallery Hours: Mon-Fri 9-9  
Sat and Sun 8:30-4:30

Nina Yocom: [ninajyocom@gmail.com](mailto:ninajyocom@gmail.com)

<https://www.ninayocom.com/>

<https://www.darlingtonarts.org/>"



## Art Natters: Members News

Sketch Club member **NANCY HERMAN'S STUDIO GALLERY** is showing Herman's watercolors this month and next.

There is also a contest at the gallery. You can win a free watercolor simply by choosing the best name for your favorite.

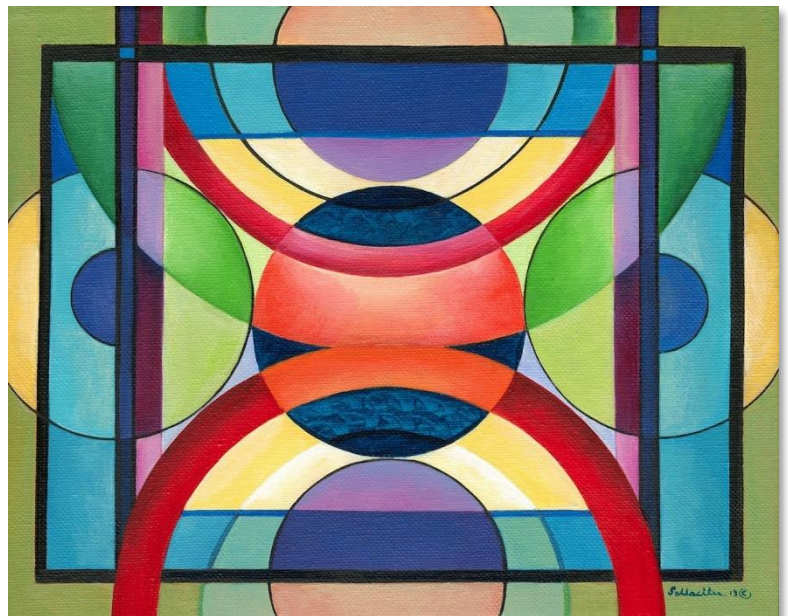
Drop by 109 Essex Avenue in Narberth, 1 to 3 every day except Monday.



**Dreamscape**

Sketch Club member **Lois Schlachter** submitted four works for the Sketch Club Online Open gallery. See more of her work and the work of others:

<https://sketchclub.org/sketch-club-open-gallery/>



**Mugsy - 8" X 10"; Acrylic on Canvas**

## Art Natters: Members News

Sketch Club member **Rich Harrington** has illustrated a comic book, collaborating with Don Steinberg, a longtime journalist and New Yorker humor writer. CEREAL is a murder mystery, business satire, and comic fantasy -- and may be the first comic book series ever set in the breakfast cereal world! The hero is a genius cereal inventor on the verge of a game-changing breakthrough. She starts receiving desperate messages from the cereal box cartoon characters, who are being violently killed off. Rich and Don created a fake cereal company filled with corrupt executives, as well as dozens of crazy cereals and characters. Issue #1 of CEREAL is available at [boinkcomix.com](http://boinkcomix.com).





## Art Natters: Members News

Sketch Club member and Sketch Club Critique Group Monitor **Don Gauger** won first place and a gallery show at the National Cryptologic Museum.



Steganographic artwork by Don Gauger, "KNOWLEDGE IS POWER"

The National Cryptologic Museum had an unusual art contest: design original artwork that contained a hidden message "Knowledge is Power." Hiding messages in art is also known as Steganography.

Don's artwork, with solution, is on display for six months. The museum is located in Annapolis Junction, MD. Photos of the museum's grand reopening reception are posted [https://www.graylandstudio.com/an-occasional-journal/blog\\_posts/an-unusual-exhibition-opens-at-the-ncm](https://www.graylandstudio.com/an-occasional-journal/blog_posts/an-unusual-exhibition-opens-at-the-ncm): The solution will be posted in six months.

## Sketch Club Open Workshop Schedule

*Welcome Back!*

Sketchclub.org • (215) 545-9298 • 235 S Camac St, Philadelphia, PA 19107

*Workshops*

**Fees**

\$10 Model Workshop sessions, \$9 for members  
\$6 for full time students

Model Tips are optional but appreciated

\*\*\*Bring your drawing and painting materials!\*\*\*



Watch for emails or visit <https://sketchclub.org> for more details on the still life workshop and holiday cancellations.

The Sketch Club offers in person workshops in compliance with CDC guidelines.

*Life Model*

Monday	6:30 pm - 9:30 pm Extended pose	Monitor: Bob Bohne
Tuesday	12:00 pm - 3:00 pm Extended pose	Monitor: Volunteer
Wednesday	6:30 pm - 9:30 pm Extended pose	Monitor: Andrew Goms
Saturday	9:30am- 12:30pm Extended pose	Monitor: Tiger Jaser

*Costumed Model*

Thursday	12:00pm-3:00pm Extended pose	Monitor: Bob Bohne
----------	---------------------------------	--------------------

Tables, chairs, and easels provided. Please bring your own supplies  
Vaccination required for entry

painting, or printmaking. All skill levels are welcome.

All workshops are open to the public. There is no need to register before attending. You do NOT have to be a member of the Philadelphia Sketch Club to participate in the workshops. Our workshops are open to anyone who is interested in drawing,

Please Note: Those who use oil paints should bring their own container(s) to remove used solvents. Odorless solvents only. See more important attendee information at: [Workshop Attendee Responsibilities](#)

Thank you to all the PSC members who donate their time and expertise to make these workshops available to PSC members and the Philadelphia art community.

## Sketch Club Open Workshop Schedule

### Workshop Attendee Responsibilities

During this period of returning to normal, we must remember to observe that some may choose be wearing masks and to respect a 6 foot distance.

Fees will be collected after the second pose. \$9 for non-members, \$8 for members, \$6 for full time students.

When setting up, please give space for others behind or in front of you. Make sure those in back can see the model.

Please observe the easel arrangement in the storage closet and replace your easel in the same manner.

Please make every effort to wipe down your easel when leaving and make sure around your easel is clear of charcoal or pastel dust.

Please put back your easel if leaving early. Use the 10-minute rest to clean up.

Please to not use turpentine for oils.

Please do all aerosol spraying outdoors, front or back yard.

If there is a change in the models pose, please inform the monitor instead of the model.

There will be two snacks available each week. The person who brought them will take these home, only coffee and tea will remain in the cabinet.

Please try to come in early to find an optimal spot to work in to reduce disturbance during workshop time.

Anyone who needs a locker or has fees for a locker should talk to Chuck Tarr, usually here on Tuesdays, or contact the office at 215-545-9298.

Thank you for your efforts to make workshops as efficient and rewarding as possible!

## Opportunities/Notices

As a courtesy to our non-PSC-member friends, in support of the Philadelphia artist community, we publish your notices, etc., free of charge. However, contributions to the PSC are always welcome. And we will gladly consider your application for membership

[Contribute to the Sketch Club Here](#)    [Apply for PSC Membership Here](#)

From Linda **Dubin-Garfield**



PLEASE JOIN ME FOR  
MY ENTRY INTO THE 80'S

BIRTHDAY BRUNCH  
SUNDAY, MAY 21, 2023  
10:30 AM TO NOON  
AT DA VINCI ART ALLIANCE  
704 Catharine Street  
Philadelphia, PA 19147

**No Parking in Fleisher Lot next door.**  
**Street parking and paid lot at 5th and Bainbridge Sts**

Also the closing of our art exhibit "Our House Is On Fire,"  
Judy Brodsky, Linda Dubin Garfield ([www.lindadubingarfield.com](http://www.lindadubingarfield.com)), Pamela  
Tudor ([www.pamelatudor.com](http://www.pamelatudor.com)) and Elsa Wachs ([www.elsawachs.com](http://www.elsawachs.com))  
create works that inspire discussion and concern about preserving the  
health and safety of our planet.

Artists are often inspired by nature and create art out of the outstanding  
natural beauty all around us. We are now at a critical juncture where we  
need to advocate for harnessing our imagination, wealth, and technology  
to make our communities and our country greener and healthier places to  
live for everyone. The Supreme Court curtailed the powers of the EPA to  
protect the environment, no longer requiring the reductions in emissions  
that are urgently needed to limit global warming. What are we to do? We  
need clean air, clean water, clean energy, open spaces and a livable  
climate for ourselves and future generations. Artists are interpreting these  
catastrophic times using our visual language. Through our art, we strive to  
create an appreciation for natural beauty and a concern for its  
preservation.

**Book Launch of Linda Dubin Garfield: An Artist's Life. Copies of book will  
be available for sale.**

***In lieu of birthday gifts, please bring a cash donation for or a check made  
out to RARE.***

**Rare** is a global leader in driving social change for people and nature. For  
over 45 years, across 60 countries, they have inspired and empowered  
millions of people and their communities to shift their behaviors and  
practices to protect our shared planet. Change is what they do. That's  
what makes them **Rare**. See more at [www.rare.org](http://www.rare.org)

***For donations of \$100 or more, you will be able to select one of my  
unframed original works on paper as a thank you gift***

Hope to see you,

Linda Dubin Garfield



## Opportunities/Notices

# CALL FOR ARTISTS!!!



## Art & Craft Fair

**Saturday,  
May 6, 2023**  
Rain or Shine

10 AM - 4 PM

8 N. Main St. &  
Gazebo Park  
Medford, NJ 08055  
[medfordarts.com](http://medfordarts.com)



POTTERY | GLASS ART | WOOD | PAINTINGS | PHOTOGRAPHY



609-654-6033 | [INFO@MEDFORDARTS.COM](mailto:INFO@MEDFORDARTS.COM) | fb: @MEDFORDARTS

**Alice Meyer-Wallace** will be teaching in Paros Greece 28 May- 3of June! Anybody who wants to paint watercolor should leave me a note: [alicemeyerwallace@yahoo.com](mailto:alicemeyerwallace@yahoo.com). \$350 for the week!

## Opportunities/Notices

**Elizabeth Heller** is happy to invite everyone to our three-person show, "Around the Neighborhood", at the The Cerulean Arts Gallery, 1355 Ridge Ave., Philadelphia, Pa. 19127. The show opens on April 29, 2023, from 2-5 PM, and is up from April 26 through May 21, 2023

### AROUND THE NEIGHBORHOOD

Tracy Everly, Elizabeth Heller  
& James Toogood

April 26 - May 21, 2023

Reception: Saturday, April 29, 2-5pm

Virtual Tour & Talk: Wednesday, May 10, 6pm

Zoom registration at [ceruleanarts.com/pages/events](http://ceruleanarts.com/pages/events)

Front Images:

Top Left: Tracy Everly, *Blue Philadelphia*, oil on archival paper, 6" x 6"  
Top Right: James Toogood, *Mixed Emotions*, watercolor on paper, 22" x 30"  
Bottom: Elizabeth Heller, *Down Umbria St., Morning*, oil on canvas, 19" x 40"



#### Cerulean Arts

Cultivating an appreciation for art by presenting exhibitions, offering unique decorative and fine art for sale and providing art instruction for personal fulfillment.

**Gallery Hours:**

Wednesday - Friday: 10 am - 6 pm  
Saturday and Sunday: 12 pm - 6 pm



#### Cerulean Arts

GALLERY · STUDIO

1355 Ridge Avenue  
Philadelphia, PA 19123  
267-514-8647  
[www.ceruleanarts.com](http://www.ceruleanarts.com)

Cerulean Arts is pleased to present *Around the Neighborhood*, featuring paintings by Tracy Everly, Elizabeth Heller and James Toogood. Tracy Everly's oil paintings of houses are an attempt to capture the remains of an experience that gives her joy before it slips away. Working from observation, photographs and memory, her expressive treatment is marked by deliberation; every gesture is carefully considered. Elizabeth Heller finds her streetscape subjects "in between", where remnants of Philadelphia's industrial age rub shoulders with new developments. She paints in oil outdoors, on the spot, knowing that as the day and days advance, what she captures will be a compilation of many moments. James Toogood's carefully rendered watercolor cityscapes emphasize variations of light, texture and atmosphere. His mysteriously depopulated images straddle the line between realism and abstraction, enabling viewers to appreciate them at multiple levels.



The show includes landscape paintings by Tracy Everly, Elizabeth Heller, and James Toogood



### AROUND THE NEIGHBORHOOD

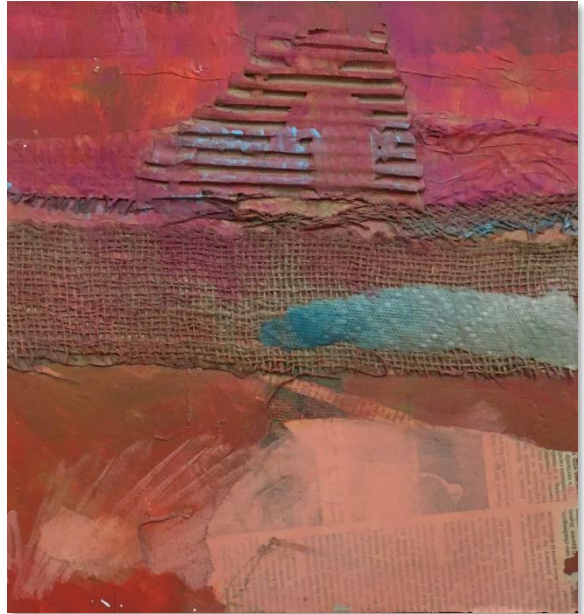
## Opportunities/Notices

At the Lieberman Gallery at Settlement Music School

Abstract Collages & Paintings by:  
by Debs Bleicher

April 12 - August 12, 2023

The Lieberman Gallery  
at Settlement Music School  
6128 Germantown Ave  
Philadelphia Pa



Abstracts by Debs Bleicher

From **Paul Guertin**

508-662-5324  
Box 313 Albion  
R.I. 02802



Sunrise at the Beach



## Opportunities/Notices

### New paintings by **Jean Plough**

Pareidolia - the tendency to perceive a specific, often meaningful image in a random or ambiguous visual pattern. The ability to see shapes or make pictures out of randomness

Muse Gallery  
52 North Second Street  
Old City, Philadelphia 19106  
215. 627. 5310

May 3 – May 28

First Friday; May 5, 5-8 PM



**Giselle - 30" X 30", acrylic paint & oil crayon on canvas**

<https://www.musegalleryphiladelphia.com/artists/jean-plough>

## Opportunities/Notices

**Diane Tomash** had the honor of being accepted into the New Jersey Arts Annual with a Monotype titled "By the Water" This piece portrays dwellings of neighbors in a serene and mysterious setting. Over 100 artists from NJ are participating in this exhibit, which is held in two locations. Opening reception is Saturday, February 4th, from 1:00-4:00 at the Noyes Museum Arts Garage of Stockton University, 2200 Fairmount Ave, Atlantic City, NJ 08037.

Closing Reception is June 3rd from 1:00-4:00 at The Noyes, Hammonton location, 30 Front Street, Hammonton, NJ 08401 Tomash's work is shown there.



**By the Water**

## Membership

### Stay in touch with current Sketch Club Members

Don't let sheltering in place prevent you from staying in touch with your Sketch Club friends and colleagues. Sketch Club members can access contact information for all current members. Go to the members only page at: <http://sketchclub.org/members-only-2/>. After you log-in with the password sent to you in your acceptance email you can click on the Membership Directory link to access members contact information. Non-Sketch Club friends can find a listing of current members along with their websites if they have one at: <http://sketchclub.org/sample-page/current-members-contact-list/>:

### Not a PSC Member?: Join Now!

If you're reading this edition of the Portfolio and you're not a member of the PSC, you should consider joining the more than 200 other Philadelphia area artists who have. The PSC is one of the most active visual art venues serving center city Philadelphia. The PSC is a hands-on organization that offers its members the opportunity to participate in all aspects of creating and presenting work to the public. It presents over 20 scheduled group and solo exhibitions annually and offers a wide range of daily workshops. [Get info and an application here.](#)

If you are a member of the PSC, please feel free to share the Portfolio with your artist friends and encourage them to become members.

### Membership Renewal

You can check the status of your membership by going to the Current Members page on the PSC web-site: <http://sketchclub.org/sample-page/memberspace/>. All current members are listed. An asterisk (\*) means that the membership has expired but is within the 60-day grace period for renewal. Names in red are active links to the individual's web site.

Renew Now! <http://sketchclub.org/annual-dues-payment/>

**If you have any questions about your membership, please don't hesitate to contact us at [membership@sketchclub.org](mailto:membership@sketchclub.org) or call the office: 215-545-9298.**

## Support the Sketch Club

### Contribute

Please consider making your tax-deductible contribution now. These funds will be put to good use providing enhanced services to our members and friends.

Membership dues cover only a small portion of the PSC's operating expenses. Competition for funding for arts organizations like the Sketch Club is increasingly competitive and total funding for the arts is shrinking. Your additional support will keep the PSC an active support for visual artists in the Metropolitan Philadelphia area. The Philadelphia Sketch Club is an IRS designated 501(c) (3) non-profit organization.



## Support the Sketch Club

You can call the office at 215-545-9298, mail checks to the Sketch Club or visit the Contribute page of our website.

Visit our **Contribute** page of our website to give online at:

<http://sketchclub.org/support-us/>

You can also support the PSC on an ongoing basis when you shop on Amazon. Go to: <http://smile.amazon.com/> and enter the Philadelphia Sketch Club in the Pick your own charitable organization box.

Your support makes it possible for the PSC to continue providing ongoing daily workshops and numerous annual gallery exhibitions.

## Amazon Smile is going away – February is the Last Month!

Amazon announces plans to discontinue Amazon Smile charity donations at the end of February 2023. To everyone who has made purchases through Amazon Smile with donations going to the PSC, Thank You!

February is your last month to make your purchases on Amazon contribute to supporting your Club. Details on using Amazon Smile are below.

## Like, Link & Share

If you're not following the Philadelphia Sketch Club on Facebook re-tweeting Sketch Club tweets yet, it's time that you did. We have well over 2000 Facebook followers. Get the word out about the Sketch Club. Please click the like button and share your comments and invite your friends to like our page.

Follow @PhilaSketchClub on Twitter, we have almost 400 followers. Please click the heart button and re-tweet our announcements.

Include links on your website, blogs and social media to The Philadelphia Sketch Club to increase traction across social media platforms.

Follow us on Facebook, Twitter and Instagram now!



## Classifieds



**Your Ad Here... Have something to sell? Looking for something?**  
Contact [portfolio@sketchclub](mailto:portfolio@sketchclub) to arrange for posting.



The Portfolio: The newsletter of the Philadelphia Sketch Club is published monthly. Editor, technical support, and webmaster: Ken Weiner. Send your member news, announcements and corrections to [portfolio@sketchclub.org](mailto:portfolio@sketchclub.org). The due date for all materials is one week before the end of the month. Back issues of the Portfolio are available at: <http://sketchclub.org/portfolio-archive/>

Thanks to PSC member volunteer **Ken Weiner** for his ongoing support of Sketch Club technology and communications functions.

#### The Philadelphia Sketch Club

235 S Camac Street  
Philadelphia, PA 19107  
(215) 545-9298  
<http://sketchclub.org/>  
[gallerymanager@sketchclub.org](mailto:gallerymanager@sketchclub.org)  
[info@sketchclub.org](mailto:info@sketchclub.org)

Gallery Manager: Kaylie Minzola

#### Officers:

- President: Richard Harrington
- Vice President: Kenneth Weiner
- Secretary: Elise Anzini
- Treasurer: William Patterson

#### Board of Directors

- Renard Edwards
- Edward Pluciennik
- Gail Williams