

Gallery hours: By appointment: Wednesday, Friday, Saturday: 1 PM to 5 PM

April 2023

## SCARY THINGS

### FRANKENSTEIN IN YOUR DREAMS



Rich Harrington

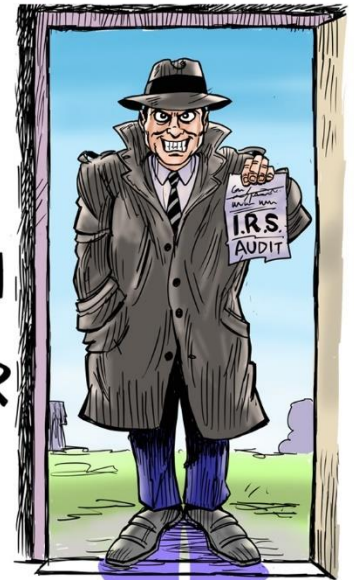
## A VIRUS ON YOUR COMPUTER



## BATS IN YOUR BELFRY

April 2023

## THE TAX MAN AT YOUR DOOR



*The Tax Man Cometh*

### This Month's Portfolio

Sketch Club Special Events	2
Volunteer	5
Sketch Club Critique Group	6
Main Gallery Events	8
Stewart Gallery Events	9
Sketch Club Open Workshop Schedule	18
Opportunities/Notices	20
Membership	23
Support the Sketch Club	23
Classifieds	24

Send your member news, announcements, and corrections to:  
portfolio@sketchclub.org. The deadline for ALL submissions is  
1-week before the end of the month.

Reminder: It's never too late. You can always renew  
your membership

You may pay online at <http://sketchclub.org/annual-dues-payment/> or mail your check to:

The Philadelphia Sketch Club  
235 S. Camac St.

Philadelphia, PA 19107

For questions please contact the Gallery Manager at  
215-545-9298 or email:

[gallerymanager@sketchclub.org](mailto:gallerymanager@sketchclub.org)

Late Breaking News – See items that were submitted  
after the publication date. Go to:

<http://sketchclub.org/late-breaking-news/>

The PSC general email is: [info@sketchclub](mailto:info@sketchclub)

## Sketch Club Special Events

### From the Sketch Club Archivist: Bill Patterson

**William H. Campbell (1915 - 2012)** – For our newer members and those of us who have been members of the Sketch Club for at least a couple of decades, I want to share some reminiscences about the artist and Sketch Club member Bill Campbell. Bill was both a successful fine artist and commercial artist. In the latter part of his career, his works were exclusively geometric abstractions, mostly involving patterns of circles. I recently saw a couple of Bill's realistic works in a private collection and I wanted to share these images with you. Here they are:



William H. Campbell, Parkway Landmarks, 10"x14", gouache.



William H. Campbell, Ferns, 12"x16", gouache

Bill Campbell was a member of the Philadelphia Sketch Club from 1940 until his death in 2012. Here is more information on Bill Campbell taken from his obituary:

William H. Campbell, 97, of Spring Garden, an illustrator, painter, and cofounder of the Main Point, a former cabaret in Bryn Mawr, died Wednesday, Oct. 31, 2012, of cancer at Penn Hospice at Rittenhouse.

Mr. Campbell had 47 solo exhibits and shared space at numerous shows with other artists over a career spanning more than 70 years. In a statement for an exhibit in 2000 at Woodmere Art Museum in Chestnut Hill, he said he experimented with "*dimension, texture, and color*" to create his abstract art. He also exhibited at Woodmere in 2010 and 2011. "*Bill's art is joyous,*" Woodmere director William R. Valerio said. "*It has a playful edge that pop art can have combined with the precision of minimalism.*"

After traditional art training, Mr. Campbell studied in the 1930s with Earl Horter, whom Valerio called "*the founding father of modern art in Philadelphia.*" Although Mr. Campbell credited Horter with "*awakening his interest in abstract art,*" he worked as an illustrator, teacher, and art director for years to earn a living.

In the late 1940s and early 1950s, he painted a series of trucks for ads for Auto Car in Ardmore. Recently, the colorful trucks have been included in an online video, viewable at [www.philly.com/campbelltrucks](http://www.philly.com/campbelltrucks).

In the mid-1950s, Mr. Campbell was art director for the Pennsylvania Railroad, producing a magazine for the company's employees and shareholders. ->

## Sketch Club Special Events

He then worked as a freelance commercial artist and taught at what is now the University of the Arts, Moore College of Art and Design, and the Philadelphia Sketch Club.

In 1964, Mr. Campbell and his wife, Jeanette Orndoff Campbell, were living in Bryn Mawr when they decided the area needed a place for folk music. They pooled their money with several other couples and opened the Main Point in Bryn Mawr. Mr. Campbell created the Main Point logo. His wife booked acts, baked gingerbread and brownies, and made coffee and cider. The club welcomed then-obscure performers such as Joni Mitchell and Arlo Guthrie and hosted a now-legendary Bruce Springsteen show in 1975.

After he and his wife divorced, she continued to run the Main Point. He moved to Spring Garden in 1970 to a home with studio space for his large canvases. For several years he served on the board of the Spring Garden Civic Association.

By the late 1980s, he stopped doing commercial work to concentrate on painting. *"I've tried to arrange my affairs more and more so I'll have the time,"* he told an *Inquirer* interviewer in 1988. His awards have included the Philadelphia Sketch Club's R. Tait McKenzie medal, a Gold Medal at the Plastic Club and the Charles Frith Award from the Pennsylvania Academy Fellowship.  
Article by Bill Patterson, Archivist

## Sketch Club On-Line Gallery: **Always Room for More Work!**

There's always room for more work: Submit Now!

The Sketch Club is hosting an on-going open gallery at: <http://sketchclub.org/sketch-club-open-gallery/>. This gallery is open to PSC members and non-members.

Submit up to 4 images of your work or of yourself working along with a very brief description to: [portfolio@sketchclub.org](mailto:portfolio@sketchclub.org).

Include for your work: Your name; Title; size; and medium.

For photos of yourself include who you are and a brief description of the image.

## Sketch Club Special Events

### On-Line Resources

- The Sketch Club Critique Group: <https://www.facebook.com/groups/PSCCritique>
- The Sketch Club Open Gallery: <https://sketchclub.org/sketch-club-open-gallery/>
- The Sketch Club's web site: [sketchclub.org](https://sketchclub.org)
- Our Facebook page: <https://www.facebook.com/thesketchclub/>
- Instagram: <https://www.instagram.com/philadelphiasketch/>
- Twitter: <https://twitter.com/PhilaSketchClub>
- Members: Stay in touch with other PSC colleagues. For contact information, go to the members only page at: <http://sketchclub.org/members-only-2/>. See Stay in touch with current Sketch Club Members in the members section below for instructions.

**Non-Sketch Club friends can find a listing of current members names and business websites if they have one at:**

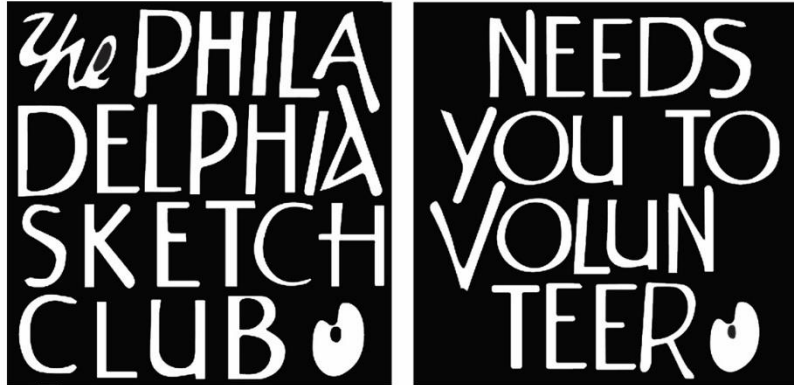
**<http://sketchclub.org/sample-page/current-members-contact-list/>.**



## Volunteer

### Be an Active Sketch Club Member; Volunteer!!

The Philadelphia Sketch Club is managed entirely by volunteers except for the gallery manager, housekeeping, and bookkeeper.



The PSC always needs volunteer members. Volunteering is one of the most important aspects of being a Sketch Club member and it is the one of the best ways to take advantage of the PSC. You'll be working with colleagues who share the same interests and helping the PSC provide unique services to the visual arts community. Sign up for an activity today.

Here are some of the activities that volunteers perform:

- Chair exhibitions
- Assist in hanging exhibitions
- Covering exhibition drop-offs and pick-ups
- Monitor workshops
- Assist with presentations
- Serve on the Board of Directors
- Serve as Key Circle volunteers
- Publish the Portfolio
- Manage the PSC web site
- Gallery coverage
- Graphics for Portfolio, PSC web site, social media
- Assist in every aspect of managing the club and providing member services

To get involved, contact us at: [info@sketchclub.org](mailto:info@sketchclub.org)

**Volunteer: The PSC needs a Chairperson** to organize and manage upcoming Sketchclub Exhibitions. Contact our PSC Gallery Manager Kaylie Minzola at [gallerymanager@sketchclub.org](mailto:gallerymanager@sketchclub.org) for details if you are interested.

Gallery hours: By appointment: Wednesday, Friday, Saturday: 1 PM to 5 PM

April 2023

## Volunteer

### Volunteers Needed for Gallery Sitting:

Please contact the office [gallerymanager@sketchclub.org](mailto:gallerymanager@sketchclub.org), or call the office 215-545-9298 Wednesdays and Fridays 11-5pm. Your assistance would be greatly appreciated.

For more information, please contact our Gallery Manager, Kaylie Minzola at:  
[gallerymanager@sketchclub.org](mailto:gallerymanager@sketchclub.org)

## Sketch Club Critique Group

### The Sketch Club Critique FaceBook Group

#### Join the Critique Facebook Group

Join your Club colleagues online at the "Philadelphia Sketch Club Critique"-- a Private group for Active PSC members only on Facebook.

Colleagues, please join in and contribute to your online art community. We all miss the camaraderie we enjoy at the Club house. The "Philadelphia Sketch Club Critique" is a chance to get together online until we can gather once more around the punch bowl and raise a toast, "to the Sketch Club, past, present and future."

#### Here's how it works:

- Active members go to the new "Philadelphia Sketch Club Critique" page and request access, which is available to all Club members in good standing.
- Once in post your work and watch as other members' post their artwork for critique.
- More details will be posted within the group including the option to be considered for a monthly "Highlights", a curated online gallery to be published on our external site/Instagram/Twitter channels.

This Facebook Group is private; this means that as Members submit their work others are invited to critique each other in a professional and respectful way.

#### Critique Group Links:

- You can find a link on the Sketch Club website: <https://sketchclub.org/>
- The Critique Group's Facebook Page: <https://www.facebook.com/groups/PSCCritique>
- The PSC's main FaceBook page: <https://www.facebook.com/thesketchclub>



## Sketch Club Critique Group

### Art related Internet News Articles

**National Geographic Article: These 18 Autochrome Photos Will Transport you to Another Era:** The method used to make these dreamy photographs resulted in a painting-like quality that not even today's best Instagram filters can replicate. <https://www.nationalgeographic.com/history/article/autochrome-photography-archive-vintage-history><https://thehustle.co/can-you-get-sued-for-using-a-meme/>

From the Hustle: Can you get sued for using a meme? <https://thehustle.co/can-you-get-sued-for-using-a-meme/>

**New venture:** Christie's, the prominent auction house, announced it's launched an in-house VC arm called Christie's Ventures, which will focus on art and crypto startups.

[https://www.wsj.com/articles/christies-venture-capital-nft-11657916141?st=lzm39fmeqhkiwu4&reflink=desktopwebshare\\_permalink](https://www.wsj.com/articles/christies-venture-capital-nft-11657916141?st=lzm39fmeqhkiwu4&reflink=desktopwebshare_permalink)

**Can a corporation "own" a color?**

<https://thehustle.co/can-a-corporation-trademark-a-color/>

**A Humorous take on Art:** The Blanton Museum of Art in Austin, Texas, challenged bakers to recreate any of its 21k works of art as cake. See the entries here.

<https://www.smithsonianmag.com/arts-culture/this-museum-is-asking-people-to-remake-famous-artworks-with-cake-180980152/?>

<https://www.instagram.com/explore/tags/blantonbakeoff/>

**Philly Mural Arts program:** Philly has more than 4,000 murals—and counting

<https://www.nationalgeographic.com/travel/article/this-city-has-more-than-4000-murals?>

**Women in the arts:** The women who redefined color - BBC Culture

<https://www.bbc.com/culture/article/20220401-the-women-who-redefined-colour>

**In Memorium: Highlights of the QEII portrait exhibit:**

<https://news.artnet.com/art-world/30-portraits-of-queen-elizabeth-ii-332442>

### Tax Info for Artists

Sketch Club members might be interested in this summary article with 2022 tax information for freelancers.

-- Submitted by Don Gauger

<https://blog.freelancersunion.org/2022/01/11/whats-new-for-freelancers-in-tax-year-2022/>

Gallery hours: By appointment: Wednesday, Friday, Saturday: 1 PM to 5 PM

April 2023

## Main Gallery Events

**Gallery Hours: Wednesday, Friday, Saturday 1 to 5pm**

[See the Sketch Club Open Gallery](https://sketchclub.org/exhibition-schedule-2023/)  
<https://sketchclub.org/exhibition-schedule-2023/>  
[Important Dates for all PSC Activities](#)

## The Sketch Club's 2023 Art of the Flower Exhibiton.

**Reception:**  
**Sunday April 23rd, 2023 1-3pm**

- **Show Chair:** Richard Harrington
- **Juror:** Christine Lafuente
- **Gallery Manager:** Kaylie Minzola

**See the online gallery:**  
<https://sketchclub.org/2023-art-of-the-flower-exhibiton/#gallery>

The 2023 Art of the Flower Exhibition at the  
Philadelphia Sketch Club April 3rd to 23rd



**Mary Hochendoner** *Hot House (Hibiscus El Capitolio)* Oil  
First Place and 2022 Donald C. Meyer Medal Winner



Gallery hours: By appointment: Wednesday, Friday, Saturday: 1 PM to 5 PM

April 2023

## Stewart Gallery Events

### People and Places Paintings by John Attanasio



April 2 - April 23

Receptions: Saturday, April 8, 2 to 4 pm  
and Sunday, April 23, 3 to 5 pm



**The Philadelphia Sketch Club**

America's oldest artist club, founded in 1860.

235 S Camac Street, Philadelphia, PA 19107 215-545-9298

Open Wed, Fri, Sat & Sun, 1 pm to 5 pm

[www.attanasio-artist.com](http://www.attanasio-artist.com)

Gallery hours: By appointment: Wednesday, Friday, Saturday: 1 PM to 5 PM

April 2023

## Stewart Gallery Events



**Exhibition space in the Stewart Gallery is available for PSC Members!**

Reserve the gallery by contacting our Exhibition Coordinator:  
exhibitions@sketchclub.org

The space is \$150 for a month. Members can show once in the Stewart Gallery per year.

[See the Sketch Club Open Gallery](https://sketchclub.org/exhibition-schedule-2023/)  
<https://sketchclub.org/exhibition-schedule-2023/>  
[Important Dates for all PSC Activities](#)

Gallery hours: By appointment: Wednesday, Friday, Saturday: 1 PM to 5 PM

April 2023

## Art Natters: Members News

### Visit the Sketch Club Online Gallery

Go to the Sketch Club's on-going open gallery to see recent updates with work by PSC members and friends:

<http://sketchclub.org/sketch-club-open-gallery/>.

Members and friends can submit up to 4 images. Send your submissions to:

[portfolio@sketchclub.org](mailto:portfolio@sketchclub.org).

Include for your work: Your name; Title; size; and medium.

For photos of yourself, include Who you are and a brief description of the image.

From Sketch Club member **Su Horty**:

Please join us at the **Opening Reception** for a group exhibition at **Hot Bed Philly on April 22, 2023**. There will also be an **Artist Panel**, date to be announced, and a **Closing Reception on May 27, 2023**. Both receptions run from 6:00 to 9:00PM. Hot Bed is located at 723 Chestnut St., 2<sup>nd</sup> Fl.

Several paintings from my *Color Pops* series will be hanging. Thank you, Hot Bed!

[www.suknollhorty.com](http://www.suknollhorty.com) for more information.



Color Pops 20; Oil on canvas; 18" X 24"; 2017



Gallery hours: By appointment: Wednesday, Friday, Saturday: 1 PM to 5 PM

April 2023

## Art Natters: Members News

Sketch Club member **Pat Wilson-Schmid** has 20 paintings on display at the Generations Senior Center, 259 North 2<sup>nd</sup> Street, Souderton PA, 18964. The show runs throughout March to the end of April. Phone no. 215-723-5841

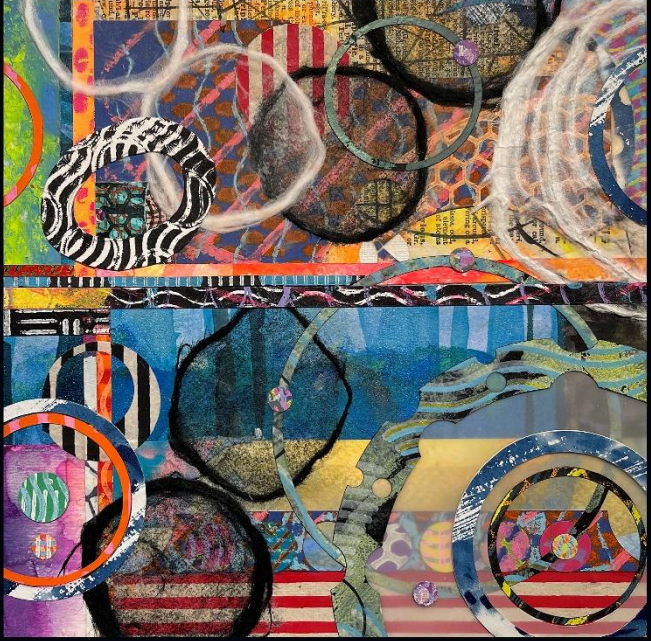
Sketch Club member **Robert Reinhardt** has a show in April at the Bob Jackson Gallery in the Plastic Club.

*Opening Reception:*  
Sunday, April 2nd, 2-5 pm

*The Plastic Club*  
247 South Camac Street, Philadelphia PA  
215-545-9324



**All at Once" - Mono-print Collages**  
**April 2 - 27. 2023**



**Robert Reinhardt**  
"All at Once" - Mono-print Collages

**April 2 - 27** - Opening Reception - Sunday, April 2nd, 2-5pm

The Plastic Club - Bob Jackson Gallery  
247 South Camac Street, Philadelphia, PA 19107



Gallery hours: By appointment: Wednesday, Friday, Saturday: 1 PM to 5 PM

April 2023

## Art Natters: Members News

Sketch Club Member **Nina Yocom** will be featured during the annual Chester County Studio Tour the weekend of May 20-21 in Exton, PA. As part of this weekend exhibition, she will be conducting a live demonstration of her alcohol ink process on Saturday, May 20, from 1-2 PM.

Saturday, May 20, 10-6

Sunday, May 21, 11-5

### Tranquil Vistas: Three Perspectives

The Art of Ivy Egger, Jill Pearson and Nina Yocom

Opening Reception Saturday March 11 6:30-7:30pm Exhibition: March 11th - April 3rd, 2023



**Ivy Egger**

*Five O'Clock Shadows*



**Jill Pearson**

*Exhale*



**Nina Yocom**

*Singing The Blues*

Darlington Arts Center - 977 Shavertown Rd, Garnet Valley, PA 19060  
610-358-3632 - [www.darlingtonarts.org](http://www.darlingtonarts.org) - M-F 9am-9pm, Sat 9am-4pm



Darlington Arts Center  
977 Shavertown Rd, Garnet Valley, PA 19060  
Gallery Hours: Mon-Fri 9-9  
Sat and Sun 8:30-4:30

Nina Yocom: [ninajyocom@gmail.com](mailto:ninajyocom@gmail.com)  
<https://www.ninajyocom.com/>  
<https://www.darlingtonarts.org/>

Gallery hours: By appointment: Wednesday, Friday, Saturday: 1 PM to 5 PM

April 2023

## Art Natters: Members News

Sketch Club member **NANCY HERMAN'S STUDIO GALLERY** is showing Herman's watercolors this month and next.

There is also a contest at the gallery. You can win a free watercolor simply by choosing the best name for your favorite.

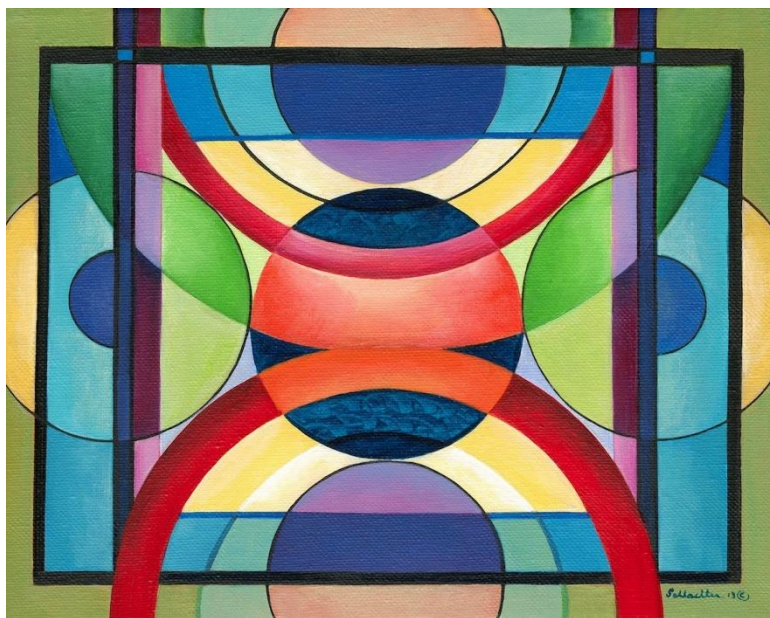
Drop by 109 Essex Avenue in Narberth, 1 to 3 every day except Monday.



Dreamscape

Sketch Club member **Lois Schlachter** submitted four works for the Sketch Club Online Open gallery. See more of her work and the work of others:

<https://sketchclub.org/sketch-club-open-gallery/>



Mugsy - 8" X 10"; Acrylic on Canvas



## Art Natters: Members News

Sketch Club member **Rich Harrington** has illustrated a comic book, collaborating with Don Steinberg, a longtime journalist and New Yorker humor writer. CEREAL is a murder mystery, business satire, and comic fantasy -- and may be the first comic book series ever set in the breakfast cereal world! The hero is a genius cereal inventor on the verge of a game-changing breakthrough. She starts receiving desperate messages from the cereal box cartoon characters, who are being violently killed off. Rich and Don created a fake cereal company filled with corrupt executives, as well as dozens of crazy cereals and characters. Issue #1 of CEREAL is available at [boinkcomix.com](http://boinkcomix.com).



Gallery hours: By appointment: Wednesday, Friday, Saturday: 1 PM to 5 PM

April 2023

## Art Natters: Members News

Sketch Club member **John Attanasio** has a painting ("Rittenhouse Town") in the Wayne Art Center's "Regional Juried Spring Open Exhibition," during the month of April.

The reception is on Sunday, April 2, from 3 to 5 pm.



Rittenhouse Town



Gallery hours: By appointment: Wednesday, Friday, Saturday: 1 PM to 5 PM

April 2023

## Art Natters: Members News

Sketch Club member and Sketch Club Critique Group Monitor **Don Gauger** won first place and a gallery show at the National Cryptologic Museum.



Steganographic artwork by Don Gauger, "KNOWLEDGE IS POWER"

The National Cryptologic Museum had an unusual art contest: design original artwork that contained a hidden message "Knowledge is Power." Hiding messages in art is also known as Steganography.

Don's artwork, with solution, is on display for six months. The museum is located in Annapolis Junction, MD. Photos of the museum's grand reopening reception are posted [https://www.graylandstudio.com/an-occasional-journal/blog\\_posts/an-unusual-exhibition-opens-at-the-ncm](https://www.graylandstudio.com/an-occasional-journal/blog_posts/an-unusual-exhibition-opens-at-the-ncm)at: The solution will be posted in six months.

## Sketch Club Open Workshop Schedule

*Welcome Back!*

Sketchclub.org • (215) 545-9298 • 235 S Camac St, Philadelphia, PA 19107

*Workshops*

### Fees

\$10 Model Workshop sessions, \$9 for members

\$6 for full time students

Model Tips are optional but appreciated

\*\*\*Bring your drawing and painting materials!\*\*\*



Watch for emails or visit  
<https://sketchclub.org> for more  
details on the still life workshop  
and holiday cancellations.

The Sketch Club offers in person  
workshops in compliance with CDC  
guidelines.

*Life Model*

Monday	6:30 pm - 9:30 pm Extended pose	Monitor: Bob Bohne
Tuesday	12:00 pm - 3:00 pm Extended pose	Monitor: Volunteer
Wednesday	6:30 pm - 9:30 pm Extended pose	Monitor: Andrew Gonsi
Saturday	9:30am- 12:30pm Extended pose	Monitor: Tiger Jaser

*Costumed Model*

Thursday	12:00pm-3:00pm Extended pose	Monitor: Bob Bohne
----------	---------------------------------	--------------------

Tables, chairs, and easels provided. Please bring your own supplies  
Vaccination required for entry

painting, or printmaking. All skill levels are welcome.

All workshops are open to the  
public. There is no need to register  
before attending. You do NOT  
have to be a member of the  
Philadelphia Sketch Club to  
participate in the workshops. Our  
workshops are open to anyone  
who is interested in drawing,

Please Note: Those who use oil paints should bring their own container(s) to remove used solvents.  
Odorless solvents only. See more important attendee information at: [Workshop Attendee Responsibilities](#)

Thank you to all the PSC members who donate their time and expertise to make these workshops available  
to PSC members and the Philadelphia art community.

## Sketch Club Open Workshop Schedule

### Workshop Attendee Responsibilities

During this period of returning to normal, we must remember to observe that some may choose be wearing masks and to respect a 6 foot distance.

Fees will be collected after the second pose. \$9 for non-members, \$8 for members, \$6 for full time students.

When setting up, please give space for others behind or in front of you. Make sure those in back can see the model.

Please observe the easel arrangement in the storage closet and replace your easel in the same manner.

Please make every effort to wipe down your easel when leaving and make sure around your easel is clear of charcoal or pastel dust.

Please put back your easel if leaving early. Use the 10-minute rest to clean up.

Please to not use turpentine for oils.

Please do all aerosol spraying outdoors, front or back yard.

If there is a change in the models pose, please inform the monitor instead of the model.

There will be two snacks available each week. The person who brought them will take these home, only coffee and tea will remain in the cabinet.

Please try to come in early to find an optimal spot to work in to reduce disturbance during workshop time.

Anyone who needs a locker or has fees for a locker should talk to Chuck Tarr, usually here on Tuesdays, or contact the office at 215-545-9298.

Thank you for your efforts to make workshops as efficient and rewarding as possible!

## Opportunities/Notices

As a courtesy to our non-PSC-member friends, in support of the Philadelphia artist community, we publish your notices, etc., free of charge. However, contributions to the PSC are always welcome. And we will gladly consider your application for membership

[Contribute to the Sketch Club Here](#)   [Apply for PSC Membership Here](#)

# CALL FOR ARTISTS!!!



## Art & Craft Fair

**Saturday,  
May 6, 2023**  
Rain or Shine

10 AM - 4 PM

8 N. Main St. &  
Gazebo Park  
Medford, NJ 08055  
[medfordarts.com](http://medfordarts.com)



POTTERY | GLASS ART | WOOD | PAINTINGS | PHOTOGRAPHY



MADE POSSIBLE BY FUNDS FROM THE BERKSHIRE COUNTY BOARD OF  
COMMISSIONERS, DEPARTMENT OF RECREATION, DIVISION  
OF PARKS, A PARTNER OF THE NEW JERSEY STATE COUNCIL ON THE ARTS



609-654-6033 | [INFO@MEDFORDARTS.COM](mailto:INFO@MEDFORDARTS.COM) | fb: @MEDFORDARTS



Gallery hours: By appointment: Wednesday, Friday, Saturday: 1 PM to 5 PM

April 2023

## Opportunities/Notices

From **Paul Guertin**

508-662-5324  
Box 313 Albion  
R.I. 02802



**Sunrise at the Beach**

Gallery hours: By appointment: Wednesday, Friday, Saturday: 1 PM to 5 PM

April 2023

## Opportunities/Notices

**Diane Tomash** had the honor of being accepted into the New Jersey Arts Annual with a Monotype titled "By the Water" This piece portrays dwellings of neighbors in a serene and mysterious setting. Over 100 artists from NJ are participating in this exhibit, which is held in two locations. Opening reception is Saturday, February 4th, from 1:00-4:00 at the Noyes Museum Arts Garage of Stockton University, 2200 Fairmount Ave, Atlantic City, NJ 08037.

Closing Reception is June 3rd from 1:00-4:00 at The Noyes, Hammonton location, 30 Front Street, Hammonton, NJ 08401 Tomash's work is shown there.



**By the Water**

## Membership

### Stay in touch with current Sketch Club Members

Don't let sheltering in place prevent you from staying in touch with your Sketch Club friends and colleagues. Sketch Club members can access contact information for all current members. Go to the members only page at: <http://sketchclub.org/members-only-2/>. After you log-in with the password sent to you in your acceptance email you can click on the Membership Directory link to access members contact information. Non-Sketch Club friends can find a listing of current members along with their websites if they have one at: <http://sketchclub.org/sample-page/current-members-contact-list/>:

### Not a PSC Member?: Join Now!

If you're reading this edition of the Portfolio and you're not a member of the PSC, you should consider joining the more than 200 other Philadelphia area artists who have. The PSC is one of the most active visual art venues serving center city Philadelphia. The PSC is a hands-on organization that offers its members the opportunity to participate in all aspects of creating and presenting work to the public. It presents over 20 scheduled group and solo exhibitions annually and offers a wide range of daily workshops. [Get info and an application here.](#)

If you are a member of the PSC, please feel free to share the Portfolio with your artist friends and encourage them to become members.

### Membership Renewal

You can check the status of your membership by going to the Current Members page on the PSC web-site: <http://sketchclub.org/sample-page/memberspace/>. All current members are listed. An asterisk (\*) means that the membership has expired but is within the 60-day grace period for renewal. Names in red are active links to the individual's web site.

Renew Now! <http://sketchclub.org/annual-dues-payment/>

If you have any questions about your membership, please don't hesitate to contact us at [membership@sketchclub.org](mailto:membership@sketchclub.org) or call the office: 215-545-9298.

## Support the Sketch Club

### Contribute

Please consider making your tax-deductible contribution now. These funds will be put to good use providing enhanced services to our members and friends.

Membership dues cover only a small portion of the PSC's operating expenses. Competition for funding for arts organizations like the Sketch Club is increasingly competitive and total funding for the arts is shrinking. Your additional support will keep the PSC an active support for visual artists in the Metropolitan Philadelphia area. The Philadelphia Sketch Club is an IRS designated 501(c) (3) non-profit organization.

Gallery hours: By appointment: Wednesday, Friday, Saturday: 1 PM to 5 PM

April 2023

## Support the Sketch Club

You can call the office at 215-545-9298, mail checks to the Sketch Club or visit the Contribute page of our website.

Visit our **Contribute** page of our website to give online at:

<http://sketchclub.org/support-us/>

You can also support the PSC on an ongoing basis when you shop on Amazon. Go to:

<http://smile.amazon.com/> and enter the Philadelphia Sketch Club in the Pick your own charitable organization box.

Your support makes it possible for the PSC to continue providing ongoing daily workshops and numerous annual gallery exhibitions.

## Amazon Smile is going away – February is the Last Month!

Amazon announces plans to discontinue Amazon Smile charity donations at the end of February 2023. To everyone who has made purchases through Amazon Smile with donations going to the PSC, Thank You!

February is your last month to make your purchases on Amazon contribute to supporting your Club. Details on using Amazon Smile are below.

## Like, Link & Share

If you're not following the Philadelphia Sketch Club on Facebook re-tweeting Sketch Club tweets yet, it's time that you did. We have well over 2000 Facebook followers. Get the word out about the Sketch Club. Please click the like button and share your comments and invite your friends to like our page.

Follow @PhilaSketchClub on Twitter, we have almost 400 followers. Please click the heart button and re-tweet our announcements.

Include links on your website, blogs and social media to The Philadelphia Sketch Club to increase traction across social media platforms.

Follow us on Facebook, Twitter and Instagram now!



## Classifieds



**Your Ad Here... Have something to sell? Looking for something?**  
Contact [portfolio@sketchclub](mailto:portfolio@sketchclub) to arrange for posting.





Gallery hours: By appointment: Wednesday, Friday, Saturday: 1 PM to 5 PM

April 2023

The Portfolio: The newsletter of the Philadelphia Sketch Club is published monthly. Editor, technical support, and webmaster: Ken Weiner. Send your member news, announcements and corrections to

[portfolio@sketchclub.org](mailto:portfolio@sketchclub.org). The due date for all materials is one week before the end of the month.

Back issues of the Portfolio are available at: <http://sketchclub.org/portfolio-archive/>

Thanks to PSC member volunteer **Ken Weiner** for his ongoing support of Sketch Club technology and communications functions.

#### **The Philadelphia Sketch Club**

235 S Camac Street  
Philadelphia, PA 19107  
(215) 545-9298  
<http://sketchclub.org/>  
[gallerymanager@sketchclub.org](mailto:gallerymanager@sketchclub.org)  
[info@sketchclub.org](mailto:info@sketchclub.org)

Gallery Manager: Kaylie Minzola

#### **Officers:**

- President: Richard Harrington
- Vice President: Kenneth Weiner
- Secretary: Elise Anzini
- Treasurer: William Patterson

#### **Board of Directors**

- Renard Edwards
- Stephen Iwanczuk
- Edward Pluciennik
- Charles F. Tarr
- Gail Williams