



Rich Harrington

This Month's Portfolio

Member Dinner Meeting: Annual Meeting	2
Sketch Club Special Events	3
Volunteer	4
Sketch Club Critique Group	5
Main Gallery Events	7
Stewart Gallery Events	8
Art Natters: Members News	9
Sketch Club Open Workshop Schedule	16
Opportunities/Notices	18
Membership	20
Support the Sketch Club	21
Classifieds	22

Send your member news, announcements, and corrections to:
portfolio@sketchclub.org. The deadline for ALL submissions is
1-week before the end of the month.

Reminder: It's never too late. You can always renew
your membership

You may pay online at <http://sketchclub.org/annual-dues-payment/> or mail your check to:

The Philadelphia Sketch Club
235 S. Camac St.
Philadelphia, PA 19107

For questions please contact the Gallery Manager at
215-545-9298 or email:

gallerymanager@sketchclub.org

Late Breaking News – See items that were submitted
after the publication date. Go to:

<http://sketchclub.org/late-breaking-news/>

The PSC general email is: info@sketchclub

Member Dinner Meeting: Annual Meeting

Notice: Annual Members Meeting June 9th, 2023



Voting for Board Members

The election will be held during the annual members meeting at the Philadelphia Sketch Club Friday June 9th, 2023, 6:00 PM. The meeting is open to all. Only members in good standing* may vote. Online Ballot links were distributed to members by email. If you have not voted online, paper ballots will be available at the meeting.

- 6:00 pm - Food and Drinks – cash bar.
- 7:00 pm - Election of Board members and counting of ballot votes.
- 7:45 pm - Announcement of Election results.

*All Life, Distinguished, and members who were current for at least the previous year. If you have questions regarding membership, please contact the PSC office.

Sketch Club Special Events

Sketch Club On-Line Gallery: **Always Room for More Work!**

There's always room for more work: Submit Now!

The Sketch Club is hosting an on-going open gallery at: <http://sketchclub.org/sketch-club-open-gallery/>. This gallery is open to PSC members and non-members.

Submit up to 4 images of your work or of yourself working along with a very brief description to: portfolio@sketchclub.org.

Include for your work: Your name; Title; size; and medium.

For photos of yourself include who you are and a brief description of the image.

On-Line Resources

- The Sketch Club Critique Group: <https://www.facebook.com/groups/PSCCritique>
- The Sketch Club Open Gallery: <https://sketchclub.org/sketch-club-open-gallery/>
- The Sketch Club's web site: sketchclub.org
- Our Facebook page: <https://www.facebook.com/thesketchclub/>
- Instagram: <https://www.instagram.com/philadelphiasketch/>
- Twitter: <https://twitter.com/PhilaSketchClub>
- Members: Stay in touch with other PSC colleagues. For contact information, go to the members only page at: <http://sketchclub.org/members-only-2/>. See Stay in touch with current Sketch Club Members in the members section below for instructions.

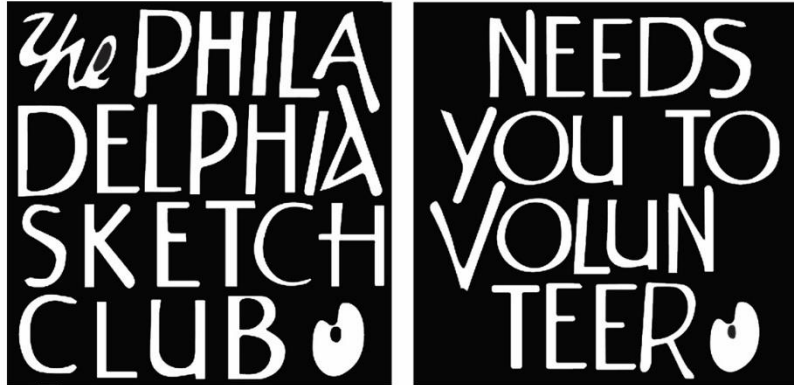
Non-Sketch Club friends can find a listing of current members names and business websites if they have one at:

<http://sketchclub.org/sample-page/current-members-contact-list/>.

Volunteer

Be an Active Sketch Club Member; Volunteer!!

The Philadelphia Sketch Club is managed entirely by volunteers except for the gallery manager, housekeeping, and bookkeeper.



The PSC always needs volunteer members. Volunteering is one of the most important aspects of being a Sketch Club member and it is the one of the best ways to take advantage of the PSC. You'll be working with colleagues who share the same interests and helping the PSC provide unique services to the visual arts community. Sign up for an activity today.

Here are some of the activities that volunteers perform:

- Chair exhibitions
- Assist in hanging exhibitions
- Covering exhibition drop-offs and pick-ups
- Monitor workshops
- Assist with presentations
- Serve on the Board of Directors
- Serve as Key Circle volunteers
- Publish the Portfolio
- Manage the PSC web site
- Gallery coverage
- Graphics for Portfolio, PSC web site, social media
- Assist in every aspect of managing the club and providing member services

To get involved, contact us at: info@sketchclub.org

Volunteer: The PSC needs a Chairperson to organize and manage upcoming Sketchclub Exhibitions. Contact our PSC Gallery Manager Kaylie Minzola at gallerymanager@sketchclub.org for details if you are interested.

Gallery hours: By appointment: Wednesday, Friday, Saturday: 1 PM to 5 PM

June 2023

Volunteer

Volunteers Needed for Gallery Sitting:

Please contact the office gallerymanager@sketchclub.org, or call the office 215-545-9298
Wednesdays and Fridays 11-5pm. Your assistance would be greatly appreciated.

For more information, please contact our Gallery Manager, Kaylie Minzola at:
gallerymanager@sketchclub.org

Sketch Club Critique Group

The Sketch Club Critique FaceBook Group

Join the Critique Facebook Group

Join your Club colleagues online at the "Philadelphia Sketch Club Critique"-- a Private group for Active PSC members only on Facebook.

Colleagues, please join in and contribute to your online art community. We all miss the camaraderie we enjoy at the Club house. The "Philadelphia Sketch Club Critique" is a chance to get together online until we can gather once more around the punch bowl and raise a toast, "to the Sketch Club, past, present and future."



Here's how it works:

- Active members go to the new "Philadelphia Sketch Club Critique" page and request access, which is available to all Club members in good standing.
- Once in post your work and watch as other members' post their artwork for critique.
- More details will be posted within the group including the option to be considered for a monthly "Highlights", a curated online gallery to be published on our external site/Instagram/Twitter channels.

This Facebook Group is private; this means that as Members submit their work others are invited to critique each other in a professional and respectful way.

Critique Group Links:

- You can find a link on the Sketch Club website: <https://sketchclub.org/>
- The Critique Group's Facebook Page: <https://www.facebook.com/groups/PSCCritique>
- The PSC's main FaceBook page: <https://www.facebook.com/thesketchclub>

Sketch Club Critique Group

Art related Internet News Articles

National Geographic Article: These 18 Autochrome Photos Will Transport you to Another Era: The method used to make these dreamy photographs resulted in a painting-like quality that not even today's best Instagram filters can replicate. <https://www.nationalgeographic.com/history/article/autochrome-photography-archive-vintage-history><https://thehustle.co/can-you-get-sued-for-using-a-meme/>

From the Hustle: Can you get sued for using a meme? <https://thehustle.co/can-you-get-sued-for-using-a-meme/>

New venture: Christie's, the prominent auction house, announced it's launched an in-house VC arm called Christie's Ventures, which will focus on art and crypto startups.

https://www.wsj.com/articles/christies-venture-capital-nft-11657916141?st=lzm39fmehqkiwu4&reflink=desktopwebshare_permalink

Can a corporation "own" a color?

<https://thehustle.co/can-a-corporation-trademark-a-color/>

A Humorous take on Art: The Blanton Museum of Art in Austin, Texas, challenged bakers to recreate any of its 21k works of art as cake. See the entries here.

<https://www.smithsonianmag.com/arts-culture/this-museum-is-asking-people-to-remake-famous-artworks-with-cake-180980152/>

<https://www.instagram.com/explore/tags/blantonbakeoff/>

Philly Mural Arts program: Philly has more than 4,000 murals—and counting

<https://www.nationalgeographic.com/travel/article/this-city-has-more-than-4000-murals?>

Women in the arts: The women who redefined color - BBC Culture

<https://www.bbc.com/culture/article/20220401-the-women-who-redefined-colour>

In Memorium: Highlights of the QEII portrait exhibit:

<https://news.artnet.com/art-world/30-portraits-of-queen-elizabeth-ii-332442>

Tax Info for Artists

Sketch Club members might be interested in this summary article with 2022 tax information for freelancers.

-- Submitted by Don Gauger

<https://blog.freelancersunion.org/2022/01/11/whats-new-for-freelancers-in-tax-year-2022/>

Gallery hours: By appointment: Wednesday, Friday, Saturday: 1 PM to 5 PM

June 2023

Main Gallery Events

The 2023 Workshop Exhibition



RECEPTION: June 18th from 1-3 pm in the Philadelphia Sketch Club's upstairs gallery. Artists are encouraged to bring light snacks to be shared with attendees. Weather permitting, our garden will be open for all to enjoy.

Gallery Hours: Wednesday, Friday, Saturday 1 to 5pm

[See the Sketch Club Open Gallery](https://sketchclub.org/exhibition-schedule-2023/)
<https://sketchclub.org/exhibition-schedule-2023/>
[Important Dates for all PSC Activities](#)

Gallery hours: By appointment: Wednesday, Friday, Saturday: 1 PM to 5 PM

June 2023

Stewart Gallery Events

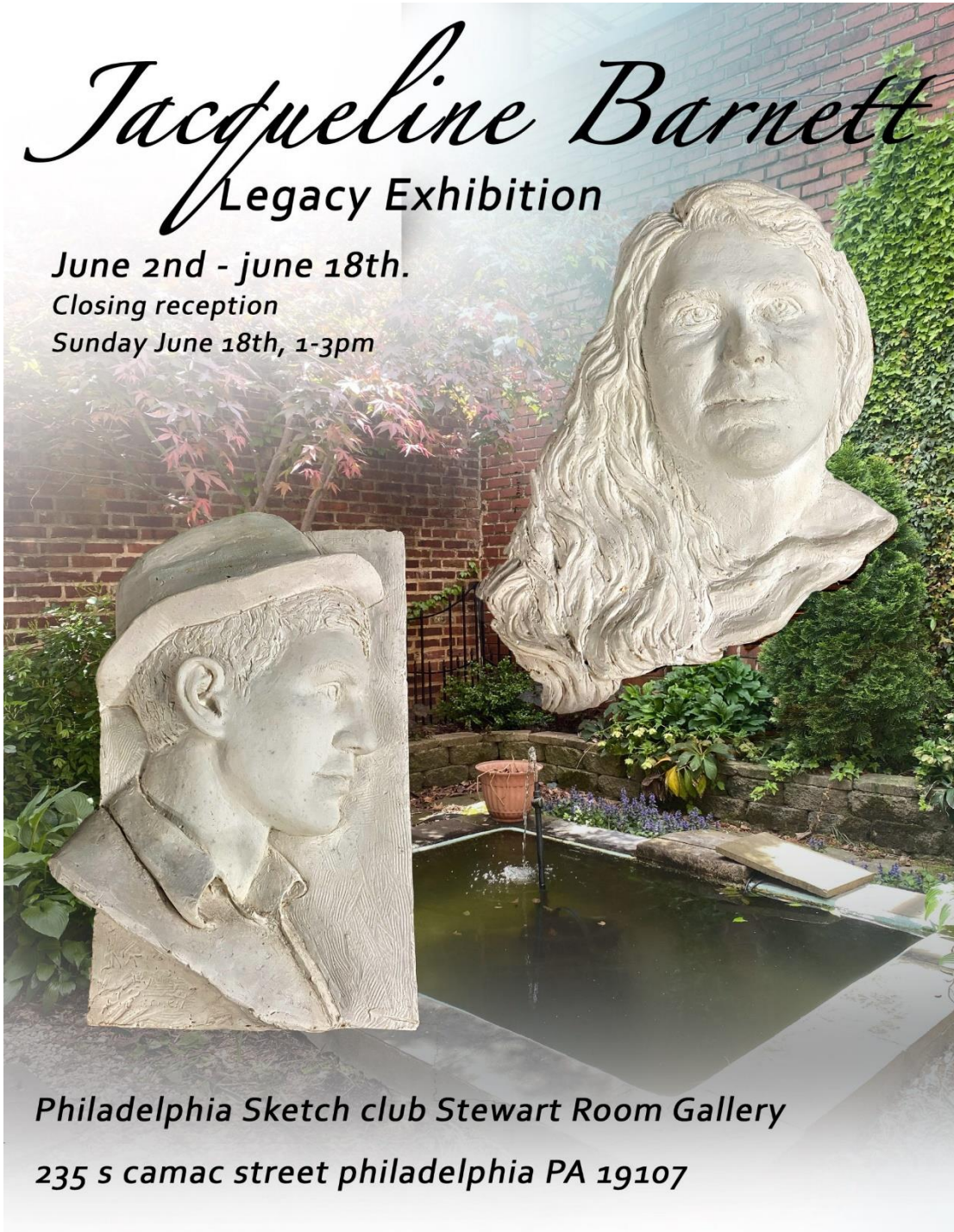
Jacqueline Barnett

Legacy Exhibition

June 2nd - June 18th.

Closing reception

Sunday June 18th, 1-3pm



Philadelphia Sketch club Stewart Room Gallery

235 s camac street philadelphia PA 19107

Gallery hours: By appointment: Wednesday, Friday, Saturday: 1 PM to 5 PM

June 2023

Stewart Gallery Events



Exhibition space in the Stewart Gallery is available for PSC Members!

Reserve the gallery by contacting our Exhibition Coordinator:
exhibitions@sketchclub.org

The space is \$150 for a month. Members can show once in the Stewart Gallery per year.

[See the Sketch Club Open Gallery](https://sketchclub.org/exhibition-schedule-2023/)
<https://sketchclub.org/exhibition-schedule-2023/>
[Important Dates for all PSC Activities](#)

Art Natters: Members News

Visit the Sketch Club Online Gallery

Go to the Sketch Club's on-going open gallery to see recent updates with work by PSC members and friends:

<http://sketchclub.org/sketch-club-open-gallery/>.

Members and friends can submit up to 4 images. Send your submissions to:

portfolio@sketchclub.org.

Include for your work: Your name; Title; size; and medium.

For photos of yourself, include Who you are and a brief description of the image.

Gallery hours: By appointment: Wednesday, Friday, Saturday: 1 PM to 5 PM

June 2023

Art Natters: Members News

Sketch Club member **Alice Chung** is exhibiting 4 paintings for MCGOPA Eternal Spring Show at The 431 Art Gallery from May 21 to June 14, 2023 431 West Valley Forge Rd King of Prussia, PA



Artist: Alice Chung

See more work by Alice at: <http://www.alicechungartist.com/index.html>

Gallery hours: By appointment: Wednesday, Friday, Saturday: 1 PM to 5 PM

June 2023

Art Natters: Members News

Sketch Club member **John Dorchester's** painting "Harmonica Man, Portrait of John Colgan-Davis was accepted in the Butler Institute of American Art's Mid-Year National Juried Exhibition. The Exhibition runs June 25, 2023, through August



"Harmonica Man, Portrait of John Colgan Davis"

This work appeared in the Sketch Club's recent 159th Annual Exhibition of Small Oil Paintings:

<https://sketchclub.org/159th-annual-exhibition-of-small-oil-paintings/- gallery>

Gallery hours: By appointment: Wednesday, Friday, Saturday: 1 PM to 5 PM

June 2023

Art Natters: Members News

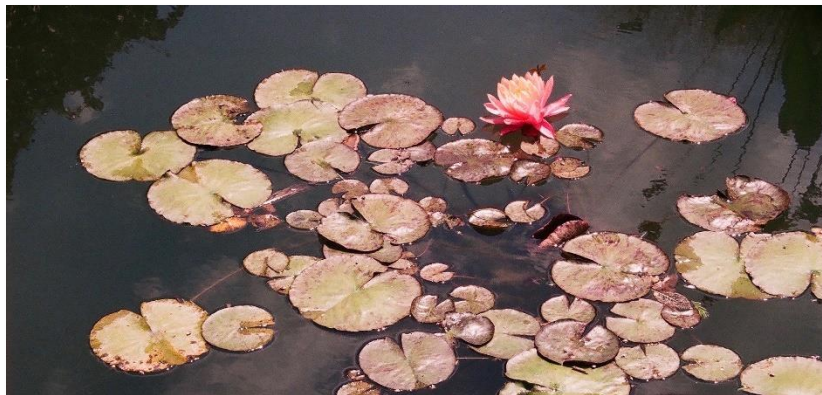
Sketch Club member **Chris Fowler** will be having a solo show, "Painted with Light", from June 14-August 25, 2023, at the Bernice Kish Gallery at Slayton House, 10400 Cross Fox Lane, Columbia, MD.



Morning Comes to Lahaina



The North Shoreline



Homage a Monet

Gallery hours: By appointment: Wednesday, Friday, Saturday: 1 PM to 5 PM

June 2023

Art Natters: Members News

Sketch Club member **Gary Grissom** is pleased to have his painting “Yoha Holding Yaqub, Sleeping” juried into Abington Art Center’s 2023 Summer Juried Show: Ethnicity Through the Eyes of the Artist., June 9 - July 24, 2023

His painting “Ava Asleep, Bird-Beak T-Shirt” included in the Cerulean Arts’ 11th Annual Juried Exhibition, June 21 - July 23, 2023.



“Yoha Holding Yaqub, Sleeping”

“Angular Table, Window, Placed Objects” is included in the Da Art Alliance’s “When The Light Comes In: The Summer members Exhibition.”



“Angular Table, Window, Placed Objects”



“Ava Asleep, Bird-Beak T-Shirt”

Gallery hours: By appointment: Wednesday, Friday, Saturday: 1 PM to 5 PM

June 2023

Art Natters: Members News

Please join Sketch Club member **Su Horty** at The Delaware Contemporary, 200 S. Madison St. in Wilmington, DE on June 9th, in the evening, for the Opening Reception of the Summer 2023 Exhibition. It will be a group show at a wonderful venue so I hope that you can make it. Plenty of restaurants nearby on the Riverfront, so you can spend the evening. 302-656-6466. decontemporary.org



Beautiful Transients 7: Oil & Graphite on canvas, 30 x 30"

Gallery hours: By appointment: Wednesday, Friday, Saturday: 1 PM to 5 PM

June 2023

Art Natters: Members News

Sketch Club member and Sketch Club Critique Group Monitor **Don Gauger** won first place and a gallery show at the National Cryptologic Museum.



Steganographic artwork by Don Gauger, "KNOWLEDGE IS POWER"

The National Cryptologic Museum had an unusual art contest: design original artwork that contained a hidden message "Knowledge is Power." Hiding messages in art is also known as Steganography.

Don's artwork, with solution, is on display for six months. The museum is located in Annapolis Junction, MD. Photos of the museum's grand reopening reception are posted https://www.graylandstudio.com/an-occasional-journal/blog_posts/an-unusual-exhibition-opens-at-the-ncmat: The solution will be posted in six months.

Sketch Club Open Workshop Schedule

Welcome Back!

Sketchclub.org • (215) 545-9298 • 235 S Camac St, Philadelphia, PA 19107

Workshops

Fees

\$10 Model Workshop sessions, \$9 for members
\$6 for full time students

Model Tips are optional but appreciated

Bring your drawing and painting materials!



Life Model

Monday	6:30 pm - 9:30 pm Extended pose	Monitor: Bob Bohne
Tuesday	12:00 pm - 3:00 pm Extended pose	Monitor: Volunteer
Wednesday	6:30 pm - 9:30 pm Extended pose	Monitor: Andrew Gonsi
Saturday	9:30am- 12:30pm Extended pose	Monitor: Tiger Jaser

Costumed Model

Thursday	12:00pm-3:00pm Extended pose	Monitor: Bob Bohne
----------	---------------------------------	--------------------

Tables, chairs, and easels provided. Please bring your own supplies
Vaccination required for entry

painting, or printmaking. All skill levels are welcome.

Please Note: Those who use oil paints should bring their own container(s) to remove used solvents.

Odorless solvents only. See more important attendee information at: [Workshop Attendee Responsibilities](https://sketchclub.org)

Thank you to all the PSC members who donate their time and expertise to make these workshops available to PSC members and the Philadelphia art community.

Watch for emails or visit

<https://sketchclub.org> for more details on the still life workshop and holiday cancellations.

The Sketch Club offers in person workshops in compliance with CDC guidelines.

All workshops are open to the public. There is no need to register before attending. You do NOT have to be a member of the Philadelphia Sketch Club to participate in the workshops. Our workshops are open to anyone who is interested in drawing,

Sketch Club Open Workshop Schedule

Workshop Attendee Responsibilities

During this period of returning to normal, we must remember to observe that some may choose be wearing masks and to respect a 6 foot distance.

Fees will be collected after the second pose. \$9 for non-members, \$8 for members, \$6 for full time students.

When setting up, please give space for others behind or in front of you. Make sure those in back can see the model.

Please observe the easel arrangement in the storage closet and replace your easel in the same manner.

Please make every effort to wipe down your easel when leaving and make sure around your easel is clear of charcoal or pastel dust.

Please put back your easel if leaving early. Use the 10-minute rest to clean up.

Please to not use turpentine for oils.

Please do all aerosol spraying outdoors, front or back yard.

If there is a change in the models pose, please inform the monitor instead of the model.

There will be two snacks available each week. The person who brought them will take these home, only coffee and tea will remain in the cabinet.

Please try to come in early to find an optimal spot to work in to reduce disturbance during workshop time.

Anyone who needs a locker or has fees for a locker should talk to Chuck Tarr, usually here on Tuesdays, or contact the office at 215-545-9298.

Thank you for your efforts to make workshops as efficient and rewarding as possible!

Gallery hours: By appointment: Wednesday, Friday, Saturday: 1 PM to 5 PM

June 2023

Opportunities/Notices

As a courtesy to our non-PSC-member friends, in support of the Philadelphia artist community, we publish your notices, etc., free of charge. However, contributions to the PSC are always welcome. And we will gladly consider your application for membership

[Contribute to the Sketch Club Here](#) [Apply for PSC Membership Here](#)

Pamela Scribner received Honorable mention for my colored pencil entry into Cherry Hill Township Juried Arts in Bloom at Croft Farms, Cherry Hill, NJ Both entries were juried in.

Honorable mention "Ventnor Beach Sail" - colored pencil, the other entry Elfreth's Alley- pen and Ink. The winners from this show will also be featured at Cherry Hill Library for the entire month of July.



"Ventnor Beach Sail"



"Elfreth's Alley"

Gallery hours: By appointment: Wednesday, Friday, Saturday: 1 PM to 5 PM

June 2023

Opportunities/Notices

From Eric Fowler



Fold Town Bar



Brooklyn 1



Tous Va Bien



Brooklyn 2

Gallery hours: By appointment: Wednesday, Friday, Saturday: 1 PM to 5 PM

June 2023

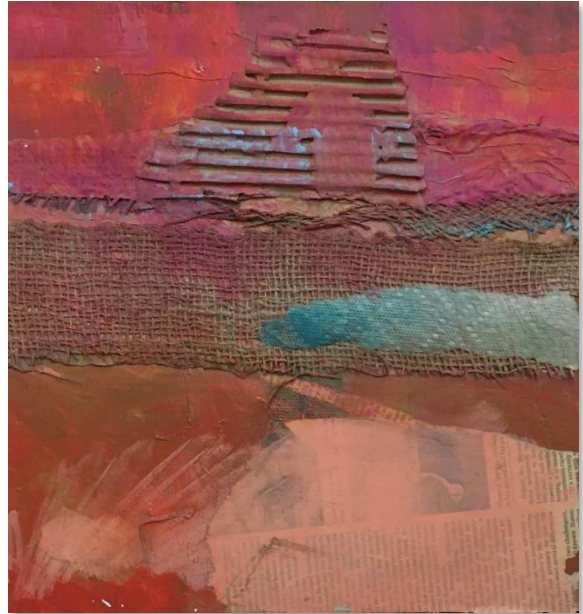
Opportunities/Notices

At the Lieberman Gallery at Settlement Music School

Abstract Collages & Paintings by:
by Debs Bleicher

April 12 - August 12, 2023

The Lieberman Gallery
at Settlement Music School
6128 Germantown Ave
Philadelphia Pa



Abstracts by Debs Bleicher

Membership

Stay in touch with current Sketch Club Members

Don't let sheltering in place prevent you from staying in touch with your Sketch Club friends and colleagues. Sketch Club members can access contact information for all current members. Go to the members only page at: <http://sketchclub.org/members-only-2/>. After you log-in with the password sent to you in your acceptance email you can click on the Membership Directory link to access members contact information. Non-Sketch Club friends can find a listing of current members along with their websites if they have one at: <http://sketchclub.org/sample-page/current-members-contact-list/>:

Not a PSC Member?: Join Now!

If you're reading this edition of the Portfolio and you're not a member of the PSC, you should consider joining the more than 200 other Philadelphia area artists who have. The PSC is one of the most active visual art venues serving center city Philadelphia. The PSC is a hands-on organization that offers its members the opportunity to participate in all aspects of creating and presenting work to the public. It presents over 20 scheduled group and solo exhibitions annually and offers a wide range of daily workshops. [Get info and an application here.](#)

If you are a member of the PSC, please feel free to share the Portfolio with your artist friends and encourage them to become members.

Gallery hours: By appointment: Wednesday, Friday, Saturday: 1 PM to 5 PM

June 2023

Membership

Membership Renewal

You can check the status of your membership by going to the Current Members page on the PSC web-site: <http://sketchclub.org/sample-page/memberspace/>. All current members are listed. An asterisk (*) means that the membership has expired but is within the 60-day grace period for renewal. Names in red are active links to the individual's web site.

Renew Now! <http://sketchclub.org/annual-dues-payment/>

If you have any questions about your membership, please don't hesitate to contact us at membership@sketchclub.org or call the office: 215-545-9298.

Support the Sketch Club

Contribute

Please consider making your tax-deductible contribution now. These funds will be put to good use providing enhanced services to our members and friends.

Membership dues cover only a small portion of the PSC's operating expenses. Competition for funding for arts organizations like the Sketch Club is increasingly competitive and total funding for the arts is shrinking. Your additional support will keep the PSC an active support for visual artists in the Metropolitan Philadelphia area. The Philadelphia Sketch Club is an IRS designated 501(c) (3) non-profit organization.

You can call the office at 215-545-9298, mail checks to the Sketch Club or visit the Contribute page of our website.

Visit our **Contribute** page of our website to give online at:

<http://sketchclub.org/support-us/>

You can also support the PSC on an ongoing basis when you shop on Amazon. Go to: <http://smile.amazon.com/> and enter the Philadelphia Sketch Club in the Pick your own charitable organization box.

Your support makes it possible for the PSC to continue providing ongoing daily workshops and numerous annual gallery exhibitions.

Support the Sketch Club

Amazon Smile is going away – February is the Last Month!

Amazon announces plans to discontinue Amazon Smile charity donations at the end of February 2023. To everyone who has made purchases through Amazon Smile with donations going to the PSC, Thank You!

February is your last month to make your purchases on Amazon contribute to supporting your Club. Details on using Amazon Smile are below.

Like, Link & Share

If you're not following the Philadelphia Sketch Club on Facebook re-tweeting Sketch Club tweets yet, it's time that you did. We have well over 2000 Facebook followers. Get the word out about the Sketch Club. Please click the like button and share your comments and invite your friends to like our page.

Follow @PhilaSketchClub on Twitter, we have almost 400 followers. Please click the heart button and re-tweet our announcements.

Include links on your website, blogs and social media to The Philadelphia Sketch Club to increase traction across social media platforms.

Follow us on Facebook, Twitter and Instagram now!



Classifieds



Your Ad Here... Have something to sell? Looking for something?
Contact portfolio@sketchclub to arrange for posting.



Gallery hours: By appointment: Wednesday, Friday, Saturday: 1 PM to 5 PM

June 2023

The Portfolio: The newsletter of the Philadelphia Sketch Club is published monthly. Editor, technical support, and webmaster: Ken Weiner. Send your member news, announcements and corrections to portfolio@sketchclub.org. The due date for all materials is one week before the end of the month. Back issues of the Portfolio are available at: <http://sketchclub.org/portfolio-archive/>

Thanks to PSC member volunteer **Ken Weiner** for his ongoing support of Sketch Club technology and communications functions.

The Philadelphia Sketch Club

235 S Camac Street
Philadelphia, PA 19107
(215) 545-9298
<http://sketchclub.org/>
gallerymanager@sketchclub.org
info@sketchclub.org

Gallery Manager: Kaylie Minzola

Officers:

- President: Richard Harrington
- Vice President: Kenneth Weiner
- Secretary: Elise Anzini
- Treasurer: William Patterson

Board of Directors

- Renard Edwards
- Edward Pluciennik
- Gail Williams