

Gallery hours: By appointment: Wednesday, Friday, Saturday: 1 PM to 5 PM

August 2023



Rich Harrington

This Month's Portfolio – (Click on the entry to view)

Members/Friends Alert	2
Sketch Club Special Events	2
Volunteer	4
Sketch Club Critique Group	5
Main Gallery Events	7
Stewart Gallery Events	8
Sketch Club Board of Directors	8
Art Natters: Members News	9
Sketch Club Open Workshop Schedule	18
Opportunities/Notices	20
Membership	25
Support the Sketch Club	26
Classifieds	27

Send your member news, announcements, and corrections to: portfolio@sketchclub.org. The deadline for ALL submissions is 1-week before the end of the month.

Reminder: It's never too late. You can always renew your membership

You may pay online at <http://sketchclub.org/annual-dues-payment/> or mail your check to:

The Philadelphia Sketch Club
235 S. Camac St.

Philadelphia, PA 19107

For questions please contact the Gallery Manager at 215-545-9298 or email:

gallerymanager@sketchclub.org

Late Breaking News – See items that were submitted after the publication date. Go to:

<http://sketchclub.org/late-breaking-news/>

The PSC general email is: info@sketchclub

Members/Friends Alert

Don't miss any Sketch Club upcoming events, workshops, pr exhibitions. If you change your address, email, or phone number let us know so we can keep your contact information in our database current. You can contact the gallery manager at 215-545-9298 or email to: <mailto:info@sketchclub.org>

Sketch Club Special Events

Announcing the 163rd Anniversary Gala Save the Date: Ocrober 21, 2023!

More information will be available in the September edition of the
PORTFOLIO



**The Philadelphia Sketch Club's
163rd Anniversary Gala
Saturday, October 21st, 2023
6 to 9PM**

Honoring

**Kyle Cassidy • Allan Edmunds
Jill Rupinski**

**Medal Presentation, Live Art Auction,
Silent Auction, Cocktails
Deluxe Hors d'oeuvres, Live Music**

*For more information and to buy
tickets, visit www.sketchclub.org
or call 215.545.9298*



235 South Camac Street
Philadelphia PA
19107

Photo by Kyle Cassidy

Sketch Club Special Events

Sketch Club On-Line Gallery: **Always Room for More Work!**

There's always room for more work: Submit Now!

The Sketch Club is hosting an on-going open gallery at: <http://sketchclub.org/sketch-club-open-gallery/>. This gallery is open to PSC members and non-members.

Submit up to 4 images of your work or of yourself working along with a very brief description to: portfolio@sketchclub.org.

Include for your work: Your name; Title; size; and medium.

For photos of yourself include who you are and a brief description of the image.

On-Line Resources

- The Sketch Club Critique Group: <https://www.facebook.com/groups/PSCCritique>
- The Sketch Club Open Gallery: <https://sketchclub.org/sketch-club-open-gallery/>
- The Sketch Club's web site: sketchclub.org
- Our Facebook page: <https://www.facebook.com/thesketchclub/>
- Instagram: <https://www.instagram.com/philadelphiasketch/>
- Twitter: <https://twitter.com/PhilaSketchClub>
- Members: Stay in touch with other PSC colleagues. For contact information, go to the members only page at: <http://sketchclub.org/members-only-2/>. See Stay in touch with current Sketch Club Members in the members section below for instructions.

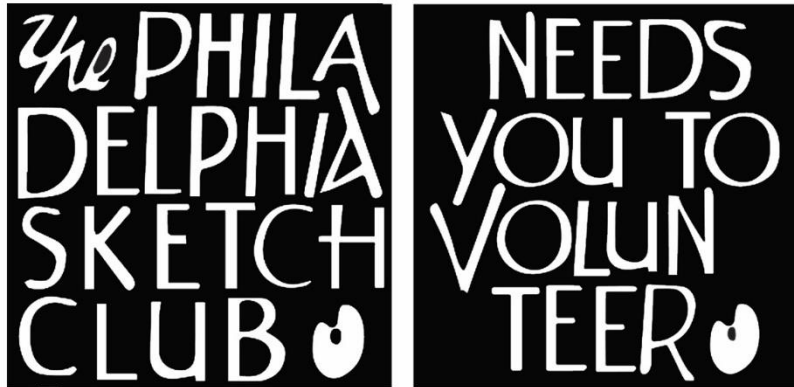
Non-Sketch Club friends can find a listing of current members names and business websites if they have one at:

<http://sketchclub.org/sample-page/current-members-contact-list/>.

Volunteer

Be an Active Sketch Club Member; Volunteer!!

The Philadelphia Sketch Club is managed entirely by volunteers except for the gallery manager, housekeeping, and bookkeeper.



The PSC always needs volunteer members. Volunteering is one of the most important aspects of being a Sketch Club member and it is the one of the best ways to take advantage of the PSC. You'll be working with colleagues who share the same interests and helping the PSC provide unique services to the visual arts community. Sign up for an activity today.

The 2023 Members Art Exhibition

is scheduled for September 1st - September 17th. We need volunteers to help hang the show. Below are the dates and times needed. Your help is crucial to the success of our exhibitions!

- Wednesday, August 23rd 1-5 PM
- Friday, August 25th 1-5 PM
- Saturday, August 26th 1-3 PM

If you can help, please contact the office at gallerymanager@sketchclub.org, or call 215-545-9298 Wednesdays and Fridays 11-5 PM. If you have not volunteered before, you must come in during office hours to learn how to open the building. Your contribution in keeping the PSC a vital organization for Philadelphia area artists is greatly appreciated.

To get involved, contact us at: info@sketchclub.org

Volunteer: The PSC needs a Chairperson to organize and manage upcoming Sketchclub Exhibitions. Contact our PSC Gallery Manager Josie **Rowley** Gallery Manager at gallerymanager@sketchclub.org for details if you are interested.

Gallery hours: By appointment: Wednesday, Friday, Saturday: 1 PM to 5 PM

August 2023

Volunteer

Volunteers Needed for Gallery Sitting:

Please contact the office gallerymanager@sketchclub.org, or call the office 215-545-9298
Wednesdays and Fridays 11-5pm. Your assistance would be greatly appreciated.

For more information, please contact our Gallery Manager, **Josie Rowley** at:
gallerymanager@sketchclub.org

Sketch Club Critique Group

The Sketch Club Critique FaceBook Group

Join the Critique Facebook Group

Join your Club colleagues online at the "Philadelphia Sketch Club Critique"-- a Private group for Active PSC members only on Facebook.

Colleagues, please join in and contribute to your online art community. We all miss the camaraderie we enjoy at the Club house. The "Philadelphia Sketch Club Critique" is a chance to get together online until we can gather once more around the punch bowl and raise a toast, "to the Sketch Club, past, present and future."

Here's how it works:

- Active members go to the new "Philadelphia Sketch Club Critique" page and request access, which is available to all Club members in good standing.
- Once in post your work and watch as other members' post their artwork for critique.
- More details will be posted within the group including the option to be considered for a monthly "Highlights", a curated online gallery to be published on our external site/Instagram/Twitter channels.

This Facebook Group is private; this means that as Members submit their work others are invited to critique each other in a professional and respectful way.

Critique Group Links:

- You can find a link on the Sketch Club website: <https://sketchclub.org/>
- The Critique Group's Facebook Page: <https://www.facebook.com/groups/PSCCritique>
- The PSC's main FaceBook page: <https://www.facebook.com/thesketchclub>



Sketch Club Critique Group

Art related Internet News Articles

National Geographic Article: These 18 Autochrome Photos Will Transport you to Another Era: The method used to make these dreamy photographs resulted in a painting-like quality that not even today's best Instagram filters can replicate. <https://www.nationalgeographic.com/history/article/autochrome-photography-archive-vintage-historyhttps://thehustle.co/can-you-get-sued-for-using-a-meme/>

From the Hustle: Can you get sued for using a meme? <https://thehustle.co/can-you-get-sued-for-using-a-meme/>

New venture: Christie's, the prominent auction house, announced it's launched an in-house VC arm called Christie's Ventures, which will focus on art and crypto startups.

https://www.wsj.com/articles/christies-venture-capital-nft-11657916141?st=lzm39fmeqhkiwu4&reflink=desktopwebshare_permalink

Can a corporation "own" a color?

<https://thehustle.co/can-a-corporation-trademark-a-color/>

A Humorous take on Art: The Blanton Museum of Art in Austin, Texas, challenged bakers to recreate any of its 21k works of art as cake. See the entries here.

<https://www.smithsonianmag.com/arts-culture/this-museum-is-asking-people-to-remake-famous-artworks-with-cake-180980152/?>

<https://www.instagram.com/explore/tags/blantonbakeoff/>

Philly Mural Arts program: Philly has more than 4,000 murals—and counting

<https://www.nationalgeographic.com/travel/article/this-city-has-more-than-4000-murals?>

Women in the arts: The women who redefined color - BBC Culture

<https://www.bbc.com/culture/article/20220401-the-women-who-redefined-colour>

In Memorium: Highlights of the QEII portrait exhibit:

<https://news.artnet.com/art-world/30-portraits-of-queen-elizabeth-ii-332442>

Tax Info for Artists

Sketch Club members might be interested in this summary article with 2022 tax information for freelancers.

-- Submitted by Don Gauger

<https://blog.freelancersunion.org/2022/01/11/whats-new-for-freelancers-in-tax-year-2022/>

Gallery hours: By appointment: Wednesday, Friday, Saturday: 1 PM to 5 PM

August 2023

Main Gallery Events

The Main Gallery is closed in August to prepare for the Members Art Exhibition

You can see the PHOTOgraphy 2023 online gallery at:

<https://sketchclub.org/photography2023/#gallery>

Coming in September



Members Art Exhibition 2023

**September 1st through
September 17th, 2023**

Reception Sunday September 17th 1-3pm



235 S Camac Street, Philadelphia, PA.
View the gallery online:
www.sketchclub.org



2019 Members Show
"Pipe Burst" by Lois Schlachter

Gallery Hours: Wednesday, Friday, Saturday 1 to 5pm

[See the Sketch Club Open Gallery](https://sketchclub.org/exhibition-schedule-2023/)

<https://sketchclub.org/exhibition-schedule-2023/>

[Important Dates for all PSC Activities](#)

Gallery hours: By appointment: Wednesday, Friday, Saturday: 1 PM to 5 PM

August 2023

Stewart Gallery Events



Exhibition space in the Stewart Gallery is available for PSC Members!

Reserve the gallery by contacting our
Exhibition Coordinator:
exhibitions@sketchclub.org

The space is \$150 for a month. Members can show once in the Stewart Gallery per year.

[See the Sketch Club Open Gallery](https://sketchclub.org/exhibition-schedule-2023/)
<https://sketchclub.org/exhibition-schedule-2023/>
[Important Dates for all PSC Activities](#)

Sketch Club Board of Directors

The Sketch Club Welcomes New Director J. Clayton Bright



An unaffected realist, the self-taught sculptor and more formally trained painter, J. Clayton Bright was born in Philadelphia in 1946. A chance encounter with a Jersey cow in 1976 tempted him to try sculpture. He captures, either as a sculpture or as a painting, a moment he has observed that defines character or causes him to pause and be refreshed by what he is observing.

His tendency to make observations about his daily encounters explains his range of subjects be they human, animal or landscape.

Art Natters: Members News

Visit the Sketch Club Online Gallery

Go to the Sketch Club's on-going open gallery to see recent updates with work by PSC members and friends:

<http://sketchclub.org/sketch-club-open-gallery/>.

Members and friends can submit up to 4 images. Send your submissions to:

portfolio@sketchclub.org.

Include for your work: Your name; Title; size; and medium.

For photos of yourself, include Who you are and a brief description of the image.

Sketch Club member **Robert Beck's** painting December Scallops (24x30") has been selected by the American Society of Marine Artists for their 19th National Exhibition, at the Albany Institute of History and Art (Sept 8- Dec31), followed by the Minnesota Marine Art Museum, Winona (Jan 19- May 12, 2024).

Robert is a signature member of ASMA, and his work represented the organization in the first International Marine Art Exhibition in 2021-22. Robert Received the PSC Medal in 2014 and was featured in It's Personal, a solo exhibition at the Michener Museum in 2021.

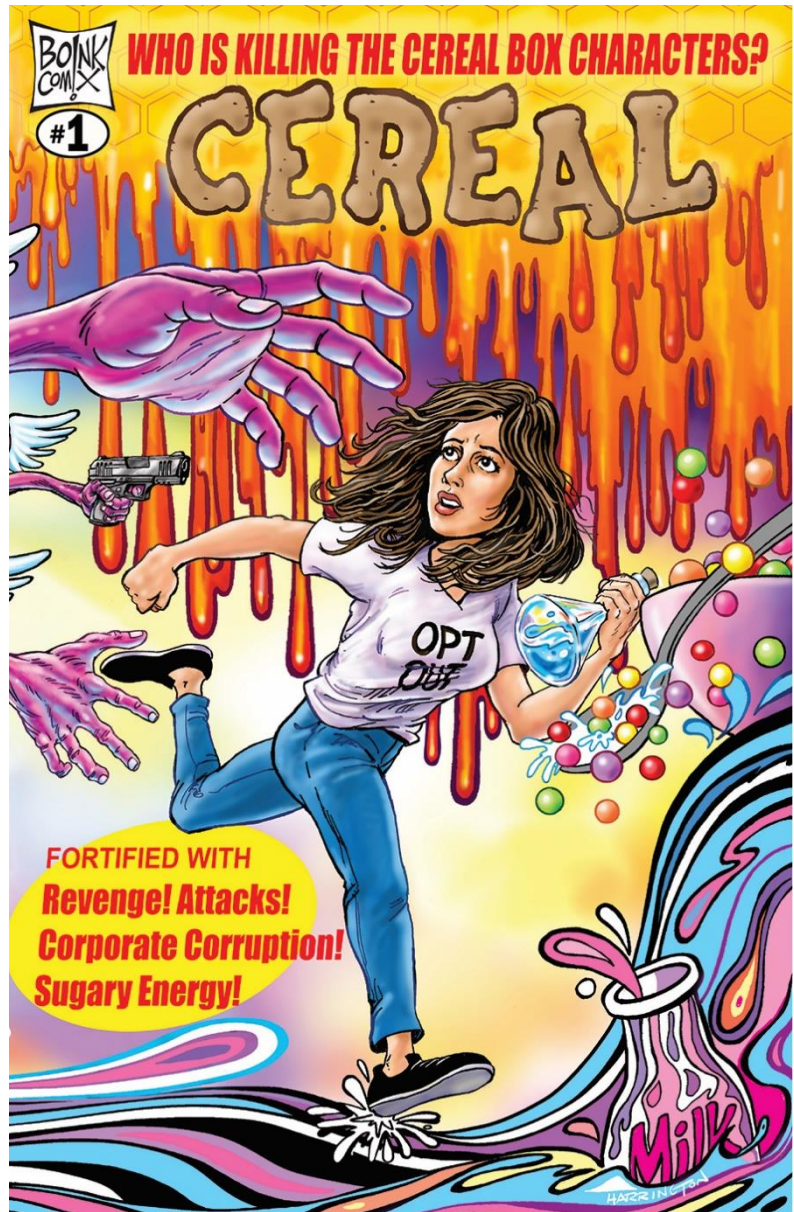


December Scallops

Art Natters: Members News

Sketch Club member and board president **Rich Harrington** has illustrated a comic book, collaborating with Don Steinberg, a longtime journalist and New Yorker humor writer. CEREAL is a murder mystery, business satire, and comic fantasy -- and may be the first comic book series ever set in the breakfast cereal world! The hero is a genius cereal inventor on the verge of a game-changing breakthrough. She starts receiving desperate messages from the cereal box cartoon characters, who are being violently killed off. Rich and Don created a fake cereal company filled with corrupt executives, as well as dozens of crazy cereals and characters. Issue #1 of CEREAL is available at:

<https://boinkcomix.com>.

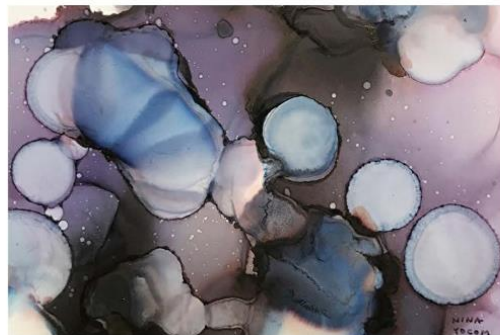


Gallery hours: By appointment: Wednesday, Friday, Saturday: 1 PM to 5 PM

August 2023

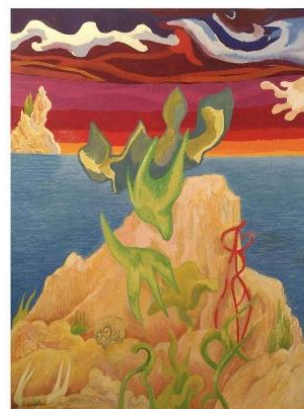
Art Natters: Members News

From Sketch Club member **Nina Yocom**



BLURRING THE LINE

RUSLAN KHAIS
HOWARD NEIFELD
NANCY SOPHY
& NINA YOCOM



BLURRING THE LINE

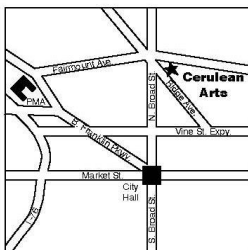
Ruslan Khais, Howard Neifeld,
Nancy Sophy & Nina Yocom

September 1 - 24, 2023

Meet the Artists: Saturday, September 9, 2-5pm
Artists' Talk at 2pm followed by a Reception

Front Images:

Top Left: Ruslan Khais, *A Perfect Day. Spring Come to Mountains*, oil & acrylic, 30" x 45"
Top Right: Nina Yocom, *Blowing Bubbles 3*, alcohol ink on paper, 9" x 11"
Bottom Left: Nancy Sophy, *x 9 (Fireflies)*, poppyseed oil & pastel on paper, 16" x 12"
Bottom Right: Howard Neifeld, *Free Fall*, gouache on paper, 8" x 6"



Cerulean Arts

Cultivating an appreciation for art by presenting exhibitions, offering unique decorative and fine art for sale and providing art instruction for personal fulfillment.

Gallery Hours:
Wednesday - Friday: 10 am - 6 pm
Saturday and Sunday: 12 pm - 6 pm



Cerulean Arts

GALLERY • STUDIO

1355 Ridge Avenue
Philadelphia, PA 19123
267-514-8647
www.ceruleanarts.com

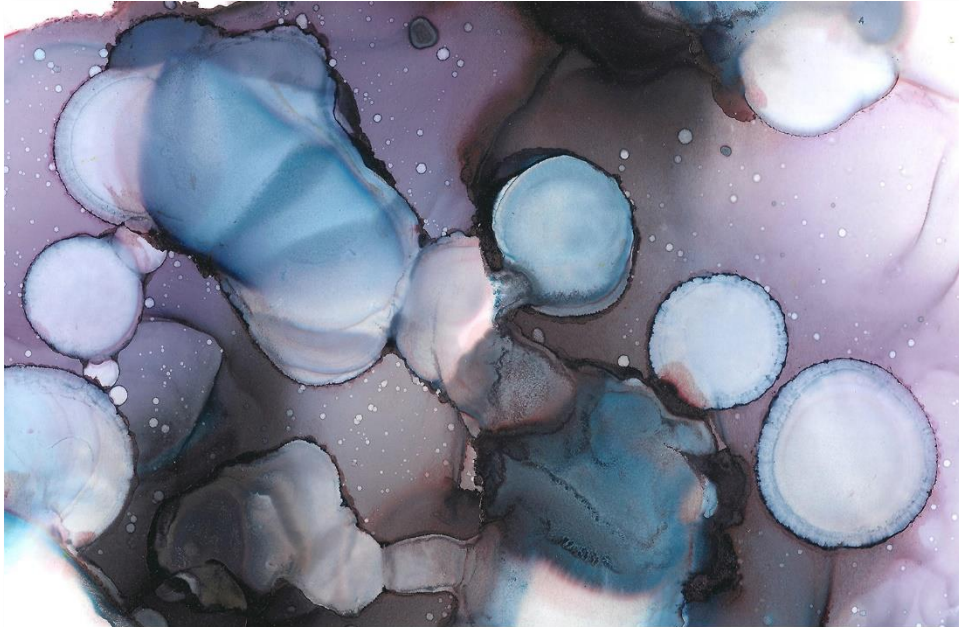
Cerulean Arts is pleased to present *Blurring the Line*, featuring paintings which straddle the line between representation and abstraction by Ruslan Khais, Howard Neifeld, Nancy Sophy and Nina Yocom. Ruslan Khais strives to find a painting language akin to music, one which allows him to emotionally reflect on the reality of the present, but beyond a literal description. The physicality of paint, color and gesture are of paramount importance to his compositions. Nina Yocom allows the flow of alcohol ink to organically form the structure of her paintings, suggesting botanical and landscape subjects. She seeks to express gratitude, hope, healing and self-acceptance in her work. Working with poppy seed oil and pastel, Nancy Sophy's atmospheric imagery draws on memory and a sense of dislocation. One becomes lost within the transforming effects of light on, within, and through her surface. In Howard Neifeld's gouache and acrylic paintings, abstract shapes represent movement, color and light. These "life forms" clash and struggle, shift space and sometimes connect with living forms in the landscape.

Gallery hours: By appointment: Wednesday, Friday, Saturday: 1 PM to 5 PM

August 2023

Art Natters: Members News

From Sketch Club member **Nina Yocom**



“Blowing Bubbles No. 3”
9 x 11 Framed
Alcohol Ink on Paper

Sketch Club member **Pat Wilson-Schmid** had four new paintings on display at the Off The Wall Gallery.

Off the Wall Gallery
4059 Skippack Pike
Skippack PA 19474
Phone # 610-222-2289.

The Gallery is open Wednesday through Sunday 10 AM to 5 PM.

Gallery hours: By appointment: Wednesday, Friday, Saturday: 1 PM to 5 PM

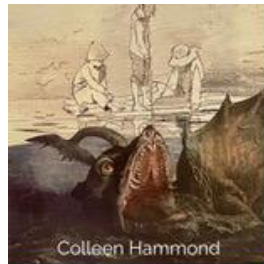
August 2023

Art Natters: Members News

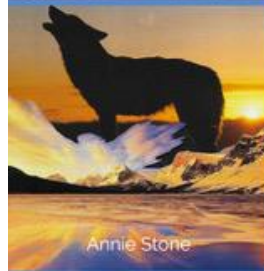
From Colleen Hammond

"Minimalist Collage" seems like an oxymoron but the **Two-Bit Collage Challenge** hanging at Benna's Cafe, July 17–August 27, shows just how dynamic minimalism in collage can be. Colleen Hammond, Catherine Gontarek and Annie Stone, members of Philadelphia CollageWorks, challenged each other to create a collage a day for 30 days using only two images for each collage, and the challenge was powerfully and playfully met. Over 70 pieces of art priced \$50-100!

Come by to meet the artists at the Closing Reception Sunday August 27, 12-2pm. Location: Benna's Cafe, 1236 S 8th Street (corner of 8th & Wharton) Philadelphia, PA 19147



Colleen Hammond



Annie Stone



Catherine Gontarek

Benna's Cafe Hosts: **Two-Bit Collage**

A Playful Collage Challenge

July 17 - August 27, 2023

Meet the Artists Reception:
Sunday, August 27, 2023
12 - 2pm

**Creativity is your
intelligence having fun.**



1236 S 8th Street
(corner of 8th & Wharton)
Philadelphia, PA 19147
M-F 7am - 2pm
Sat & Sun 8am - 2pm



S

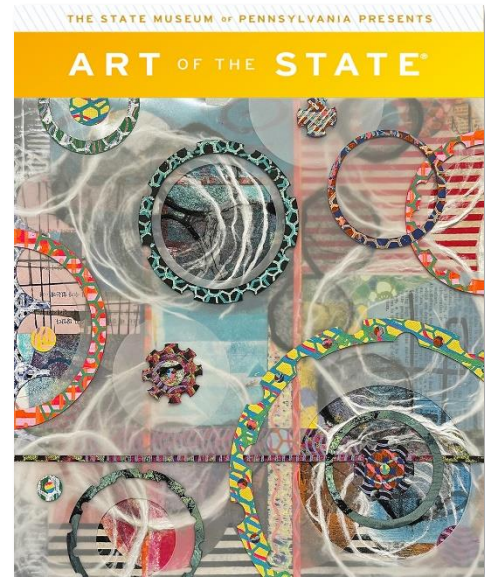
Art Natters: Members News

Here are some exhibitions that Sketch Club member **Robert Reinhardt** will be included in in the next few months.

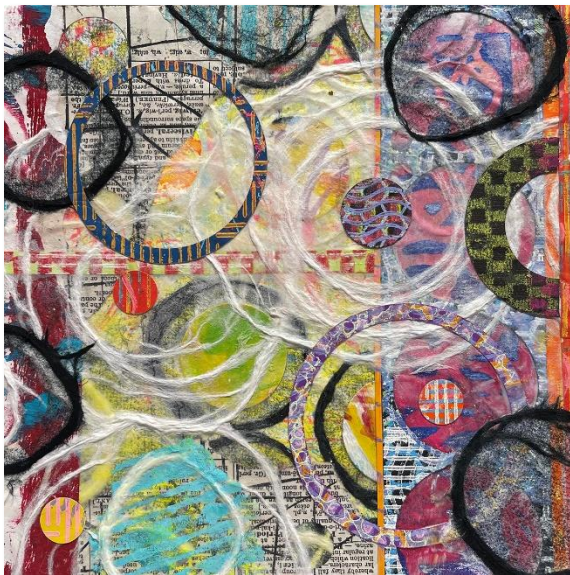
1. I am honored to receive the news that my work, "Portals #1" has been chosen to be exhibited in Art of the State 2023 at The State Museum of Pennsylvania. The work is a mono-print collage sized 12' x 12'. The show dates are September 10, 2023 - January 7, 2024.

2. One of my mono-print collages, "Storm in a Teacup" has been accepted into the Cerulean Arts 11th Annual Juried Exhibition. The show runs from June 21 - July 23, 2023.

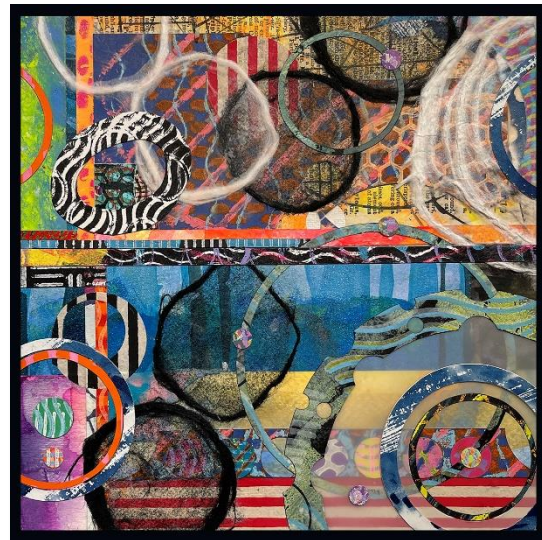
3. I am very pleased to have been accepted into The Abington Art Center's 2023 Summer Juried show. The show runs from June 9 - July 24. My accepted work is titled "Eye of the Hurricane" - a mono-print collage - 8" x 8". It's going to be a very busy summer!



Portals #1



Eye of the Hurricane



Storm in a Teacup

Gallery hours: By appointment: Wednesday, Friday, Saturday: 1 PM to 5 PM

August 2023

Art Natters: Members News

Sketch Club member **John Dorchester's** painting "Harmonica Man, Portrait of John Colgan-Davis" was accepted in the Butler Institute of American Art's Mid-Year National Juried Exhibition. The Exhibition runs June 25, 2023, through August



"Harmonica Man, Portrait of John Colgan Davis"

This work appeared in the Sketch Club's recent 159th Annual Exhibition of Small Oil Paintings:

<https://sketchclub.org/159th-annual-exhibition-of-small-oil-paintings/- gallery>

Gallery hours: By appointment: Wednesday, Friday, Saturday: 1 PM to 5 PM

August 2023

Art Natters: Members News

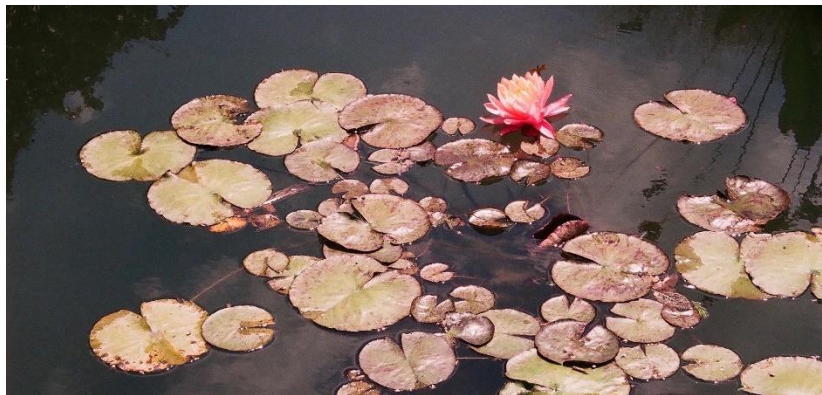
Sketch Club member **Chris Fowler** will be having a solo show, "Painted with Light", from June 14-August 25, 2023, at the Bernice Kish Gallery at Slayton House, 10400 Cross Fox Lane, Columbia, MD.



Morning Comes to Lahaina



The North Shoreline



Homage a Monet

Gallery hours: By appointment: Wednesday, Friday, Saturday: 1 PM to 5 PM

August 2023

Art Natters: Members News

Sketch Club member and Sketch Club Critique Group Monitor **Don Gauger** won first place and a gallery show at the National Cryptologic Museum.



Steganographic artwork by Don Gauger, "KNOWLEDGE IS POWER"

The National Cryptologic Museum had an unusual art contest: design original artwork that contained a hidden message "Knowledge is Power." Hiding messages in art is also known as Steganography.

Don's artwork, with solution, is on display for six months. The museum is located in Annapolis Junction, MD. Photos of the museum's grand reopening reception are posted https://www.graylandstudio.com/an-occasional-journal/blog_posts/an-unusual-exhibition-opens-at-the-ncmat: The solution will be posted in six months.

Sketch Club Open Workshop Schedule

Welcome Back!

Sketchclub.org • (215) 545-9298 • 235 S Camac St, Philadelphia, PA 19107

Workshops

Fees

\$10 Model Workshop sessions, \$9 for members

\$6 for full time students

Model Tips are optional but appreciated

Bring your drawing and painting materials!



Watch for emails or visit
<https://sketchclub.org> for more
details on the still life workshop
and holiday cancellations.

The Sketch Club offers in person
workshops in compliance with CDC
guidelines.

Life Model

Monday	6:30 pm - 9:30 pm Extended pose	Monitor: Bob Bohne
Tuesday	12:00 pm - 3:00 pm Extended pose	Monitor: Volunteer
Wednesday	6:30 pm - 9:30 pm Extended pose	Monitor: Andrew Gonsi
Saturday	9:30am- 12:30pm Extended pose	Monitor: Tiger Jaser

Costumed Model

Thursday	12:00pm-3:00pm Extended pose	Monitor: Bob Bohne
----------	---------------------------------	--------------------

Tables, chairs, and easels provided. Please bring your own supplies
Vaccination required for entry

painting, or printmaking. All skill levels are welcome.

All workshops are open to the
public. There is no need to register
before attending. You do NOT
have to be a member of the
Philadelphia Sketch Club to
participate in the workshops. Our
workshops are open to anyone
who is interested in drawing,

Please Note: Those who use oil paints should bring their own container(s) to remove used solvents.
Odorless solvents only. See more important attendee information at: [Workshop Attendee Responsibilities](#)

Thank you to all the PSC members who donate their time and expertise to make these workshops available
to PSC members and the Philadelphia art community.

Sketch Club Open Workshop Schedule

Workshop Attendee Responsibilities

During this period of returning to normal, we must remember to observe that some may choose be wearing masks and to respect a 6 foot distance.

Fees will be collected after the second pose. \$9 for non-members, \$8 for members, \$6 for full time students.

When setting up, please give space for others behind or in front of you. Make sure those in back can see the model.

Please observe the easel arrangement in the storage closet and replace your easel in the same manner.

Please make every effort to wipe down your easel when leaving and make sure around your easel is clear of charcoal or pastel dust.

Please put back your easel if leaving early. Use the 10-minute rest to clean up.

Please to not use turpentine for oils.

Please do all aerosol spraying outdoors, front or back yard.

If there is a change in the models pose, please inform the monitor instead of the model.

There will be two snacks available each week. The person who brought them will take these home, only coffee and tea will remain in the cabinet.

Please try to come in early to find an optimal spot to work in to reduce disturbance during workshop time.

Anyone who needs a locker or has fees for a locker should talk to Chuck Tarr, usually here on Tuesdays, or contact the office at 215-545-9298.

Thank you for your efforts to make workshops as efficient and rewarding as possible!



Opportunities/Notices

As a courtesy to our non-PSC-member friends, in support of the Philadelphia artist community, we publish your notices, etc., free of charge. However, contributions to the PSC are always welcome. And we will gladly consider your application for membership

[Contribute to the Sketch Club Here](#)

[Apply for PSC Membership Here](#)

Gallery hours: By appointment: Wednesday, Friday, Saturday: 1 PM to 5 PM

August 2023

Opportunities/Notices

FLORAL STILL LIFE PAINTING WITH ELIZABETH HELLER AT CERULEAN ARTS 1355 Ridge Ave., Philadelphia, Pa. 19123



FOLLOW THE LINK FOR MORE INFORMATION:
[https://ceruleanarts.com/products/
floral-still-life-painting-with-elizabeth-heller](https://ceruleanarts.com/products/floral-still-life-painting-with-elizabeth-heller)

<https://ceruleanarts.com/products/floral-still-life-painting-with-elizabeth-heller>

Gallery hours: By appointment: Wednesday, Friday, Saturday: 1 PM to 5 PM

August 2023

Opportunities/Notices

ABOUT THE EXHIBITION:

The concept for *Block Party* was structured on a collaborative venture that emerged out of the Philadelphia CollageWorks (PCW) collective desire to create connections amongst its members while simultaneously supporting each others artistic practice. *Block Party* is an example of the power of collaboration to share our stories, celebrate our diversities, and create unification.

Block Party will open in Gallery 2 at Da Vinci Art Alliance on August 2nd and be on view through August 20th. The opening reception will take place on Thursday, August 3rd, 4-7pm. A closing reception and artist talk will be held on Sunday, August 20th from 12-2pm. Location: 704 Catherine Street, Philadelphia, PA 19147

DVA PRESENTS
Da Vinci Art Alliance



PHILADELPHIA
COLLAGE
WORKS

AN EXHIBITION BY
PHILADELPHIA COLLAGeworks
AUGUST 2 - AUGUST 20, 2023



Opening Reception: August 3rd, 4 - 7pm
Artist Talk & Closing: August 20th, 12-2pm

Da Vinci Art Alliance
704 Catharine Street
Philadelphia PA 19147
Gallery Hours:
Wednesdays - Sundays 11am - 5pm

Gallery hours: By appointment: Wednesday, Friday, Saturday: 1 PM to 5 PM

August 2023

Opportunities/Notices

Four pieces from **Eric Fowler**



Old Town Bar



Tous Va Bien



Brooklyn 2



Brooklyn 1

Opportunities/Notices

Nature in Focus 2023



John Heinz National Wildlife Refuge Photography Competition & Exhibition

Photographers of all ages are invited to submit your best nature photographs. Photos must be shot within the boundaries of the Heinz Refuge using any type of camera – film, digital, or cell phone. Images may include landscapes, wildlife, flowers, etc.; the possibilities are endless for capturing the essence of the natural world!

Photos will be evaluated based on originality, creativity, and how well they capture the competition's theme. The competition has three Divisions:

- *Children (12 & under):*
- *Teens (13 Thru 17 & 18 if still in High School) and:*
- *Adults (18 & Older)*

All photos must be submitted digitally through the Friends of Heinz Refuge (FOHR) website beginning June 19th thru July 30th. Teens and adults may submit up to three (3) images for \$5.00 per photo; children may submit one (1) image only, free of charge. Complete guidelines, rules and instructions are available at <https://fohrefuge.org/>

Cash Prizes In Each Division!

Selection and Exhibition: The top 25 photos from the Teen and Adult divisions will be chosen for exhibition at the Refuge. ALL Children Division photos submitted will be printed, mounted and on display at the Exhibition at no cost.

Prizes will be awarded to the top three winners in each division. The winning photos will be announced during the Philly Fall Nature Fest in September, creating an exciting moment to celebrate your talent and appreciation for nature!

Sponsored by Friends of Heinz Refuge (FOHR)



Gallery hours: By appointment: Wednesday, Friday, Saturday: 1 PM to 5 PM

August 2023

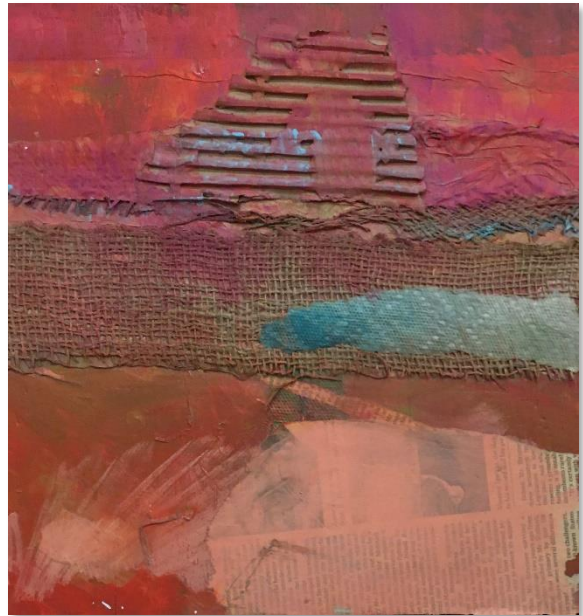
Opportunities/Notices

At the Lieberman Gallery at Settlement Music School

Abstract Collages & Paintings by:
by Debs Bleicher

April 12 - August 12, 2023

The Lieberman Gallery
at Settlement Music School
6128 Germantown Ave
Philadelphia Pa



Abstracts by Debs Bleicher

Membership

Stay in touch with current Sketch Club Members

Don't let sheltering in place prevent you from staying in touch with your Sketch Club friends and colleagues. Sketch Club members can access contact information for all current members. Go to the members only page at: <http://sketchclub.org/members-only-2/>. After you log-in with the password sent to you in your acceptance email you can click on the Membership Directory link to access members contact information. Non-Sketch Club friends can find a listing of current members along with their websites if they have one at: <http://sketchclub.org/sample-page/current-members-contact-list/>:

Not a PSC Member?: Join Now!

If you're reading this edition of the Portfolio and you're not a member of the PSC, you should consider joining the more than 200 other Philadelphia area artists who have. The PSC is one of the most active visual art venues serving center city Philadelphia. The PSC is a hands-on organization that offers its members the opportunity to participate in all aspects of creating and presenting work to the public. It presents over 20 scheduled group and solo exhibitions annually and offers a wide range of daily workshops. [Get info and an application here.](#)

If you are a member of the PSC, please feel free to share the Portfolio with your artist friends and encourage them to become members.

Membership

Membership Renewal

You can check the status of your membership by going to the Current Members page on the PSC web-site: <http://sketchclub.org/sample-page/memberspace/>. All current members are listed. An asterisk (*) means that the membership has expired but is within the 60-day grace period for renewal. Names in red are active links to the individual's web site.

Renew Now! <http://sketchclub.org/annual-dues-payment/>

If you have any questions about your membership, please don't hesitate to contact us at membership@sketchclub.org or call the office: 215-545-9298.

Support the Sketch Club

Contribute

Please consider making your tax-deductible contribution now. These funds will be put to good use providing enhanced services to our members and friends.

Membership dues cover only a small portion of the PSC's operating expenses. Competition for funding for arts organizations like the Sketch Club is increasingly competitive and total funding for the arts is shrinking. Your additional support will keep the PSC an active support for visual artists in the Metropolitan Philadelphia area. The Philadelphia Sketch Club is an IRS designated 501(c) (3) non-profit organization.

You can call the office at 215-545-9298, mail checks to the Sketch Club or visit the Contribute page of our website.

Visit our **Contribute** page of our website to give online at:

<http://sketchclub.org/support-us/>

You can also support the PSC on an ongoing basis when you shop on Amazon. Go to: <http://smile.amazon.com/> and enter the Philadelphia Sketch Club in the Pick your own charitable organization box.

Your support makes it possible for the PSC to continue providing ongoing daily workshops and numerous annual gallery exhibitions.

Like, Link & Share

If you're not following the Philadelphia Sketch Club on Facebook re-tweeting Sketch Club tweets yet, it's time that you did. We have well over 2000 Facebook followers. Get the word out about the Sketch Club. Please click the like button and share your comments and invite your friends to like our page.

Follow @PhilaSketchClub on Twitter, we have almost 400 followers. Please click the heart button and re-tweet our announcements.

Gallery hours: By appointment: Wednesday, Friday, Saturday: 1 PM to 5 PM

August 2023

Support the Sketch Club

Include links on your website, blogs and social media to The Philadelphia Sketch Club to increase traction across social media platforms.

Follow us on Facebook, Twitter and Instagram now!



Classifieds



Your Ad Here... Have something to sell? Looking for something?
Contact portfolio@sketchclub to arrange for posting.



Gallery hours: By appointment: Wednesday, Friday, Saturday: 1 PM to 5 PM

August 2023

The Portfolio: The newsletter of the Philadelphia Sketch Club is published monthly. Editor, technical support, and webmaster: Ken Weiner. Send your member news, announcements and corrections to

portfolio@sketchclub.org. The due date for all materials is one week before the end of the month.

Back issues of the Portfolio are available at: <http://sketchclub.org/portfolio-archive/>

Thanks to PSC member volunteer **Ken Weiner** for his ongoing support of Sketch Club technology and communications functions.

The Philadelphia Sketch Club

235 S Camac Street
Philadelphia, PA 19107
(215) 545-9298
<http://sketchclub.org/>
gallerymanager@sketchclub.org
info@sketchclub.org

Gallery Manager: Josie Rowley

Officers:

- President: Richard Harrington
- Vice President: Kenneth Weiner
- Secretary: Elise Anzini
- Treasurer: William Patterson

Board of Directors:

- John Attanasio
- Clayton Bright
- Melvin A. Chappell
- Renard Edwards
- Michael A. Fernandez
- Chris Fowler
- Stephen Iwanczuk
- Tiger Jaser
- Joe Salgado