

September 2023 - Pre-Gala Special Edition

Come Join US

The Philadelphia Sketch Club's 163rd Anniversary Gala

*Saturday,
October 21st 2023
6 to 10 PM*

*Medal Presentation,
Live Art Auction,
Silent Auction, Cocktails,
Deluxe Hors d'oeuvres, Live Music*

Honoring

**Kyle
Cassidy**

**Allan L.
Edmunds**

**Jill A.
Rupinski**

**The PHILA
DELPHIA
SKETCH
CLUB**

*For more
information
and to buy
tickets, visit
sketchclub.org
or call
215.545.9298*

*Pre-Gala viewing of the art work and
absentee bidding can be arranged by
contacting Bill Patterson at 267-664-2434
or bpatterson2045@comcast.net*

This Month's Portfolio – (Click on the entry to view)

Sketch Club 163 rd Anniversary Gala	2
Sketch Club Open Workshop	5
Open Studio Schedule	5
Fees	6
Volunteer	8
Sketch Club Critique Group	9
Main Gallery Events	12
Stewart Gallery Events	14
Members/Friends Alert	15
Sketch Club Board of Directors	16
Art Natters: Members News	17
Opportunities/Notices	23
Membership	25
Support the Sketch Club	26
Classifieds	27

Send your member news, announcements, and corrections to:
portfolio@sketchclub.org. The deadline for ALL submissions is
1-week before the end of the month.

Reminder: It's never too late. You can always renew
your membership

You may pay online at <http://sketchclub.org/annual-dues-payment/> or mail your check to:

The Philadelphia Sketch Club
235 S. Camac St.
Philadelphia, PA 19107

For questions please contact the Gallery Manager at
215-545-9298 or email:

gallerymanager@sketchclub.org

Late Breaking News – See items that were submitted
after the publication date. Go to:

<http://sketchclub.org/late-breaking-news/>

The PSC general email is: info@sketchclub

Sketch Club 163rd Anniversary Gala

THE PHILADELPHIA SKETCH CLUB'S 163rd ANNIVERSARY GALA



**Philadelphia Sketch Club's 163rd Anniversary Gala, Honoring
Kyle Cassidy, Allan L. Edmunds and Jill A. Rupinski
Saturday, October 21, 2023 – 6 to 10 PM**

**Medal Presentation, Live Art Auction, Silent Auction,
Cocktails, Deluxe Hors d'oeuvres, Live Music**

**For more information and to buy tickets,
visit www.sketchclub.org or call 215-545-9298
235 South Camac Street
Philadelphia, PA 19107**

Photo by Kyle Cassidy

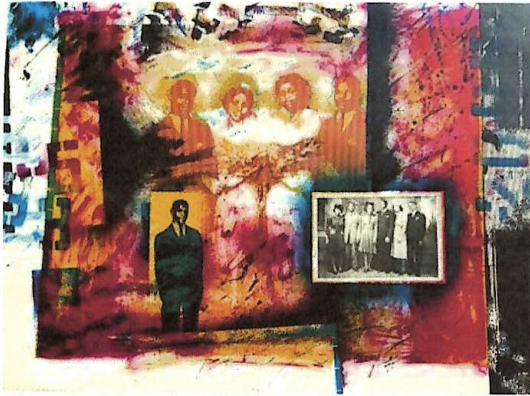
The Philadelphia Sketch Club will be hosting its 163rd Anniversary Gala on Saturday, October 21, 2023, from 6 PM to 10 PM. One of the highlights of the event is that we will be honoring three of the nation's top artists; Kyle Cassidy, Allan L. Edmunds, and Jill A. Rupinski. We will be presenting each with the Philadelphia Sketch Club Medal for their significant achievements in the visual arts. This will be a fun and highly visible event. It will bring together our members, patrons, supporters, friends, sponsors, and neighbors. It will feature a live art auction, silent auction, deluxe hors d'oeuvres, cocktails, and music.

[Complete Details](#) [Purchase Tickets](#)

Sketch Club 163rd Anniversary Gala

Auction Items

The Philadelphia Sketch Club
163rd Anniversary Gala, Live Auction Items
October 21, 2023 – Page 1



Allan L. Edmunds, *EFA IT*, Offset lithograph and collage, 16/40, image 22"x30"



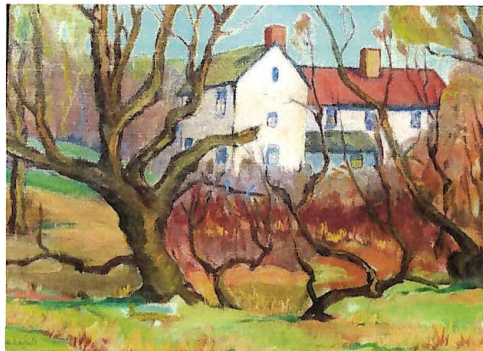
Kyle Cassidy, *Between Us and Catastrophe*, Photograph (Details to be provided)



Kyle Cassidy, *Addie*, Photograph (Details to be provided)



Jill A. Rupinski, Pastel (Details to be provided)



George Lear, (1879-1956), *Rural Architectural Landscape*, Oil on canvas, 12" x 16



Domenic DiStefano, *AWS*, (1924-2011), *The Yellow House*, Watercolor, 30"x38"

Sketch Club 163rd Anniversary Gala

Auction Items

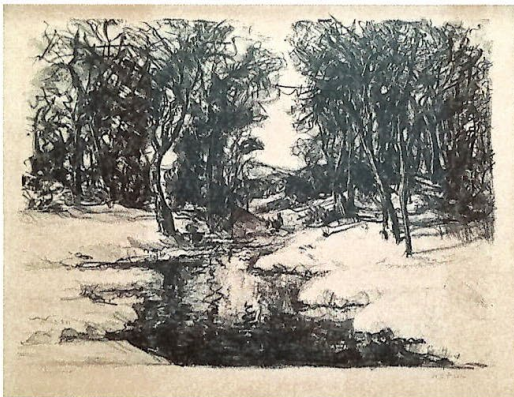
The Philadelphia Sketch Club
163rd Anniversary Gala, Live Auction Items
October 21, 2023 – Page 2



Paul Rickert, (1947-2023), *Stormy Day*, 1970,
Watercolor, 25"x30"



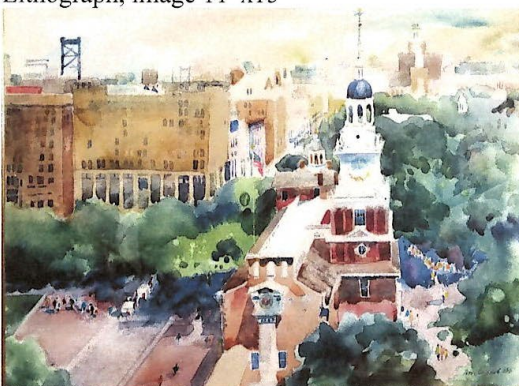
Cesare A. Ricciardi, (1892-1973), *Boats in Harbor*,
Oil on canvas board, image 12"x16"



Walter E. Baum, (1884-1956), *The Brook*,
Lithograph, image 11"x15"



Joseph C. Claghorn, (1869-1947), *A Vermont
Sugar Camp*, Watercolor, 21" x 33"



Doree Loschiavo, *Above Independence Hall*,
Watercolor, 21.5" x 29"

Sketch Club Open Workshop

Open Studio Workshops

Our workshops provide a welcoming open studio environment where artists of all levels can gather to create, learn, and connect. Whether you're an experienced artist seeking to refine your techniques or a newcomer eager to explore your creative side, our workshops offer a space where you can draw and paint the human figure from a life model, nude and clothed. We offer a variety of sessions from short dynamic gestural poses to long classical poses, offering opportunities to fully explore the human form.



Our spacious studio space has been recently renovated. Newly installed gallery lighting--with ultraviolet filters to protect paintings--is ideal for working artists. The space is bathed in natural light.

Open Studio Schedule

Mondays: 6:30 PM - 9:30 PM Nude model, short and long poses Monitor: Bob Bohne	Tuesdays: 12:00 PM - 3:00 PM Nude model, long pose Monitor: Volunteer	Wednesdays: 6:30 PM - 9:30 PM Nude model, short and long poses Monitor: Andrew Goms	Thursdays: 12:00 PM - 3:00 PM Costumed model, long poses Monitor: Bob Bohne	Saturdays: 9:30 AM - 12:30 PM Nude model, gestural, short, and long poses Monitor: Tiger Jaser
---------------------------------------------------------------------------------------------	------------------------------------------------------------------------------------	--------------------------------------------------------------------------------------------------	------------------------------------------------------------------------------------------	-------------------------------------------------------------------------------------------------------------

No prior signup needed. Join any of our scheduled workshops and bring your own art supplies. We provide chairs, tables, and easels. All workshops are held in the Sketch Club's upstairs gallery and are open to the public and run weekly, excluding holidays and inclement weather. The schedule above is accurate as of 2023, cancellations will be posted to the front page of Sketchclub.org, and timely notifications will be sent to the workshop mailing list. Join our workshops mailing list to stay informed of the latest workshop activities, schedule updates, and learn about upcoming sessions.

Sketch Club Open Workshop

Fees

\$9 for members ([become member](#))

\$10 for non-members

\$6 for full-time students (student ID required)

- Our workshops are open to individuals at any skill level
- You do NOT have to be a member of the Philadelphia Sketch Club to participate in the workshops.
- You must bring your own supplies. Easels, tables and seating are provided
- Only odorless terpenoid or similar solvent permitted, and you must take it with you The PSC does not have facilities for disposal of solvents
- A small number of electrical outlets are available for digital device users
- Workshop attendees have the opportunity to exhibit their work at [The annual Workshop Show](#)

Watch for emails or visit <https://sketchclub.org/workshops/> for more details on the still life workshop and holiday cancellations.

All workshops are open to the public. There is no need to register before attending. You do NOT have to be a member of the Philadelphia Sketch Club to participate in the workshops. Our workshops are open to anyone who is interested in drawing, painting, or printmaking. All skill levels are welcome.

Please Note: Those who use oil paints should bring their own container(s) to remove used solvents.

Odorless solvents only. See more important attendee information at: [Workshop Attendee Responsibilities](#)

Thank you to all the PSC members who donated their time and expertise to make these workshops available to PSC members and the Philadelphia art community.

Our monitors are all volunteers. If you're interested in volunteering, please contact us at workshops@sketchclub.org. If you're interested in modeling for any of our workshops, [sign up here](#)



Sketch Club Open Workshop

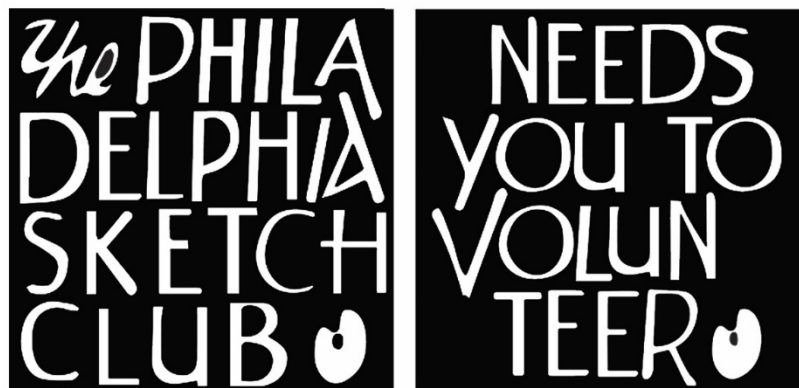
Workshop Guidelines

- Please arrive early to find an optimal spot to work in and not disrupt the session during workshop time.
- Fees will be collected by the monitors after the first twenty minutes. Please have cash on hand. Tipping the models is highly encouraged.
- When setting up, please give space for others behind or in front of you. Make sure those in back can see the model.
- Please make every effort to wipe down your easel when leaving and make sure around your easel is clear of charcoal or pastel dust.
- Please observe the easel arrangement in the storage closet and replace your easel in the same manner.
- Please do not use turpentine for oils and bring your own container to dispose of used minerals safely. We ask that you use odorless thinner.
- Please do all aerosol spraying outdoors, front or back yard.
- If there is a need to adjust the pose, please inform the monitor directly, instead of the model.
- Taking pictures of the models is not allowed, unless explicitly permission is granted by the model.
- Anyone who needs a locker or has fees for a locker should contact the office at 215-545-9298 or workshops@sketchclub.org.
- Attendees under 18 require permission slip from legal guardian.
- We always appreciate your feedback.
Let us know if you have any [suggestions or feedback](#)

Volunteer

Be an Active Sketch Club Member; Volunteer!!

The Philadelphia Sketch Club is managed entirely by volunteers except for the gallery manager, housekeeping, and bookkeeper.



The PSC always needs volunteer members. Volunteering is one of the most important aspects of being a Sketch Club member and it is the one of the best ways to take advantage of the PSC. You'll be working with colleagues who share the same interests and helping the PSC provide unique services to the visual arts community. Sign up for an activity today.

The 2023 Members Art Exhibition

is scheduled for September 1st - September 17th. We need volunteers to help hang the show. Below are the dates and times needed. Your help is crucial to the success of our exhibitions!

- Wednesday, August 23rd 1-5 PM
- Friday, August 25th 1-5 PM
- Saturday, August 26th 1-3 PM

If you can help, please contact the office at gallerymanager@sketchclub.org, or call 215-545-9298 Wednesdays and Fridays 11-5 PM. If you have not volunteered before, you must come in during office hours to learn how to open the building. Your contribution in keeping the PSC a vital organization for Philadelphia area artists is greatly appreciated.

To get involved, contact us at: info@sketchclub.org

Volunteer: The PSC needs a Chairperson to organize and manage upcoming Sketchclub Exhibitions. Contact our PSC Gallery Manager Josie **Rowley** Gallery Manager at gallerymanager@sketchclub.org for details if you are interested.

Gallery hours: By appointment: Wednesday, Friday, Saturday: 1 PM to 5 PM

September 2023

Volunteer

Volunteers Needed for Gallery Sitting:

Please contact the office gallerymanager@sketchclub.org, or call the office 215-545-9298 Wednesdays and Fridays 11-5pm. Your assistance would be greatly appreciated.

For more information, please contact our Gallery Manager, **Josie Rowley** at:
gallerymanager@sketchclub.org

Sketch Club Critique Group

The Sketch Club Critique FaceBook Group

Join the Critique Facebook Group

Join your Club colleagues online at the "Philadelphia Sketch Club Critique"-- a Private group for Active PSC members only on Facebook.

Colleagues, please join in and contribute to your online art community. We all miss the camaraderie we enjoy at the Club house. The "Philadelphia Sketch Club Critique" is a chance to get together online until we can gather once more around the punch bowl and raise a toast, "to the Sketch Club, past, present and future."



Here's how it works:

- Active members go to the new "Philadelphia Sketch Club Critique" page and request access, which is available to all Club members in good standing.
- Once in post your work and watch as other members' post their artwork for critique.
- More details will be posted within the group including the option to be considered for a monthly "Highlights", a curated online gallery to be published on our external site/Instagram/Twitter channels.

This Facebook Group is private; this means that as Members submit their work others are invited to critique each other in a professional and respectful way.

Critique Group Links:

- You can find a link on the Sketch Club website: <https://sketchclub.org/>
- The Critique Group's Facebook Page: <https://www.facebook.com/groups/PSCCritique>
- The PSC's main FaceBook page: <https://www.facebook.com/thesketchclub>

Sketch Club Critique Group

Artificial Intelligence (AI) Image Generation Tools – by Don Gauger

New tools are being offered almost daily using AI engines. First is the generative quality of AI. A creator crafts a text inquiry and the AI engine generates variations. Just like getting good search query results requires a well crafted text query, the quality of the output image depends on the skill in writing a good description. As for design, the quality of the imagination of the creator, and how successfully they describe it, will make a huge difference in the quality of the final design's impact.

It is possible that AI image generation will pass through a phase much like photography did, where classic artists disparaged photos as not really being art. Most artists now recognize true artistry in the best photography.

Perhaps AI generated images will become another artist's tool. Digital artists might use an AI generated image as a starting point, then layer their own work on top of it. Only time will tell.

Here are two examples of AI generated images using a text-to-image engine.

The first was created using the OpenAI DALL-E 2 tool found at <https://labs.openai.com>. The second was using the Adobe Creative Cloud Betta text-to-image engine

As you can see from these examples, the AI engines respond differently, and the types of images create vary a great deal.



OpenAI DALL-E 2 tool: "Santa posing for a crowd of artists painting at their easels with Philadelphia city hall in the background and light snow flurries and Christmas lights"



Adobe Creative Cloud Betta: "Santa posing for a crowd of artists painting at their easels with Philadelphia city hall in the background and light snow flurries and Christmas lights"

Sketch Club Critique Group

Art related Internet News Articles

National Geographic Article: These 18 Autochrome Photos Will Transport you to Another Era: The method used to make these dreamy photographs resulted in a painting-like quality that not even today's best Instagram filters can replicate. <https://www.nationalgeographic.com/history/article/autochrome-photography-archive-vintage-historyhttps://thehustle.co/can-you-get-sued-for-using-a-meme/>

From the Hustle: Can you get sued for using a meme? <https://thehustle.co/can-you-get-sued-for-using-a-meme/>

New venture: Christie's, the prominent auction house, announced it's launched an in-house VC arm called Christie's Ventures, which will focus on art and crypto startups.

https://www.wsj.com/articles/christies-venture-capital-nft-11657916141?st=lzm39fmeqhkiwu4&reflink=desktopwebshare_permalink

Can a corporation "own" a color?

<https://thehustle.co/can-a-corporation-trademark-a-color/>

A Humorous take on Art: The Blanton Museum of Art in Austin, Texas, challenged bakers to recreate any of its 21k works of art as cake. See the entries here.

<https://www.smithsonianmag.com/arts-culture/this-museum-is-asking-people-to-remake-famous-artworks-with-cake-180980152/?>

<https://www.instagram.com/explore/tags/blantonbakeoff/>

Philly Mural Arts program: Philly has more than 4,000 murals—and counting

<https://www.nationalgeographic.com/travel/article/this-city-has-more-than-4000-murals?>

Women in the arts: The women who redefined color - BBC Culture

<https://www.bbc.com/culture/article/20220401-the-women-who-redefined-colour>

In Memorium: Highlights of the QEII portrait exhibit:

<https://news.artnet.com/art-world/30-portraits-of-queen-elizabeth-ii-332442>

Tax Info for Artists

Sketch Club members might be interested in this summary article with 2022 tax information for freelancers.

-- Submitted by Don Gauger

<https://blog.freelancersunion.org/2022/01/11/whats-new-for-freelancers-in-tax-year-2022/>

Gallery hours: By appointment: Wednesday, Friday, Saturday: 1 PM to 5 PM

September 2023

Main Gallery Events

You can see the PHOTOgraphy 2023 online gallery at:

<https://sketchclub.org/photography2023/#gallery>

Coming in September



Members Art Exhibition 2023

September 1st through
September 17th, 2023

Reception Sunday September 17th 1-3pm



235 S Camac Street, Philadelphia, PA.
View the gallery online:
www.sketchclub.org



2019 Members Show
"Pipe Burst" by Lois Schlachter

For a sneak-peak at the show: <https://www.facebook.com/thesketchclub>

Gallery hours: By appointment: Wednesday, Friday, Saturday: 1 PM to 5 PM

September 2023

Main Gallery Events

Coming in October: Now Accepting Entries!



Image by Kasey Uhter

**This is a juried show open to the public.
See the prospectus for important dates and enter online below!**

[PROSPECTUS](#)

[ENTER ONLINE](#)

Gallery hours: By appointment: Wednesday, Friday, Saturday: 1 PM to 5 PM

September 2023

Main Gallery Events

Gallery Hours: Wednesday, Friday, Saturday 1 to 5pm

[See the Sketch Club Open Gallery](https://sketchclub.org/exhibition-schedule-2023/)
<https://sketchclub.org/exhibition-schedule-2023/>
[Important Dates for all PSC Activities](#)

Stewart Gallery Events



**Exhibition space in
the Stewart Gallery
is available for PSC
Members!**

Reserve the gallery by
contacting our
Exhibition Coordinator:
exhibitions@sketchclub.org

The space is \$150 for a
month. Members can
show once in the Stewart
Gallery per year.

Visit the Sketch Club Online Gallery

Go to the Sketch Club's on-going open gallery to see recent updates with work by PSC members and friends:

<http://sketchclub.org/sketch-club-open-gallery/>.

Members and friends can submit up to 4 images. Send your submissions to:

portfolio@sketchclub.org.

Include for your work: Your name; Title; size; and medium.

For photos of yourself, include Who you are and a brief description of the image.

Gallery hours: By appointment: Wednesday, Friday, Saturday: 1 PM to 5 PM

September 2023

Stewart Gallery Events

[See the Sketch Club Open Gallery](https://sketchclub.org/exhibition-schedule-2023/)
<https://sketchclub.org/exhibition-schedule-2023/>
[Important Dates for all PSC Activities](#)

Members/Friends Alert

Sketch Club / Classical Arts Atelier Partnership



The Philadelphia Sketch Club has partnered with Classical Arts Atelier to offer classical drawing classes for teens and young adults on Wednesdays from 3:15-4:45 on an affordable, drop-in basis. Limited spots are available!

Learn drawing techniques used for hundreds of years and studied by artists such as Vincent Van Gogh and Pablo Picasso, beginners welcome! Visit Classical Arts Atelier www.caa-philly.com or to book a class click here (<https://pocketsuite.io/link/classicalartsatelier>).

Have you moved? Changed your email? New phone number?

Don't miss any Sketch Club upcoming events, workshops, pr exhibitions. If you change your address, email, or phone number let us know so we can keep your contact information in our database current. You can contact the gallery manager at 215-545-9298 or email to:

<mailto:info@sketchclub.org>

Sketch Club On-Line Gallery: **Always Room for More Work!**

There's always room for more work: Submit Now!

The Sketch Club is hosting an on-going open gallery at: <http://sketchclub.org/sketch-club-open-gallery/>. This gallery is open to PSC members and non-members.

Submit up to 4 images of your work or of yourself working along with a very brief description to: portfolio@sketchclub.org.

Include for your work: Your name; Title; size; and medium.

For photos of yourself include who you are and a brief description of the image.

Members/Friends Alert

On-Line Resources

- The Sketch Club Critique Group: <https://www.facebook.com/groups/PSCCritique>
- The Sketch Club Open Gallery: <https://sketchclub.org/sketch-club-open-gallery/>
- The Sketch Club's web site: sketchclub.org
- Our Facebook page: <https://www.facebook.com/thesketchclub/>
- Instagram: <https://www.instagram.com/philadelphiasketch/>
- Twitter: <https://twitter.com/PhilaSketchClub>
- Members: Stay in touch with other PSC colleagues. For contact information, go to the members only page at: <http://sketchclub.org/members-only-2/>. See Stay in touch with current Sketch Club Members in the members section below for instructions.

Non-Sketch Club friends can find a listing of current members names and business websites if they have one at:

<http://sketchclub.org/sample-page/current-members-contact-list/>.

Sketch Club Board of Directors

The Sketch Club Welcomes New Director J. Clayton Bright

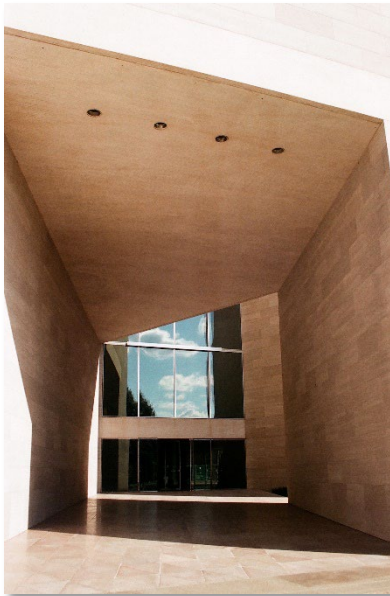


An unaffected realist, the self-taught sculptor and more formally trained painter, J. Clayton Bright was born in Philadelphia in 1946. A chance encounter with a Jersey cow in 1976 tempted him to try sculpture. He captures, either as a sculpture or as a painting, a moment he has observed that defines character or causes him to pause and be refreshed by what he is observing.

His tendency to make observations about his daily encounters explains his range of subjects be they human, animal or landscape.

Art Natters: Members News

For those who may be traveling to New York (or who already live there), Sketch Club member and board member **Chris Fowler** will have two pieces, Seventh Avenue and East Gallery IV, in display as part of the Teravara Gallery Booth at the Superfine Art Fair to be held from Thursday September 14th through Sunday September 17th at Iron23, 29 W 23rd Street, less than half a block away from New York's iconic Flatiron building and Madison Square Park.



East Gallery IV



Seventh Avenue

Sketch Club member **Robert Beck's** painting December Scallops (24x30") has been selected by the American Society of Marine Artists for their 19th National Exhibition, at the Albany Institute of History and Art (Sept 8- Dec31), followed by the Minnesota Marine Art Museum, Winona (Jan 19- May 12, 2024).

Robert is a signature member of ASMA, and his work represented the organization in the first International Marine Art Exhibition in 2021-22. Robert Received the PSC Medal in 2014 and was featured in It's Personal, a solo exhibition at the Michener Museum in 2021.



December Scallops

Art Natters: Members News

Sketch Club member and board president **Rich Harrington** has illustrated a comic book, collaborating with Don Steinberg, a longtime journalist and New Yorker humor writer. CEREAL is a murder mystery, business satire, and comic fantasy -- and may be the first comic book series ever set in the breakfast cereal world! The hero is a genius cereal inventor on the verge of a game-changing breakthrough. She starts receiving desperate messages from the cereal box cartoon characters, who are being violently killed off. Rich and Don created a fake cereal company filled with corrupt executives, as well as dozens of crazy cereals and characters. Issue #1 of CEREAL is available at:

<https://boinkcomix.com>.

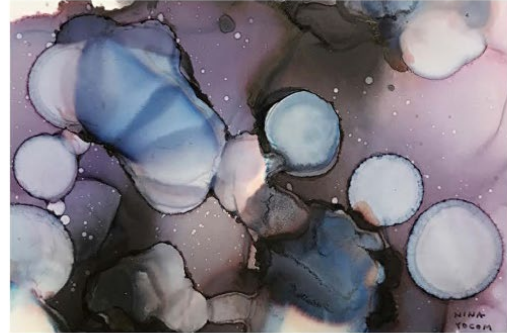


Gallery hours: By appointment: Wednesday, Friday, Saturday: 1 PM to 5 PM

September 2023

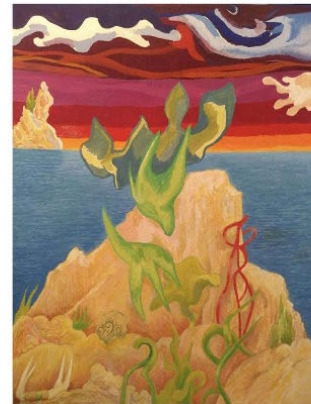
Art Natters: Members News

From Sketch Club member **Nina Yocom**



BLURRING THE LINE

**RUSLAN KHAIS
HOWARD NEIFELD
NANCY SOPHY
& NINA YOCOM**



BLURRING THE LINE

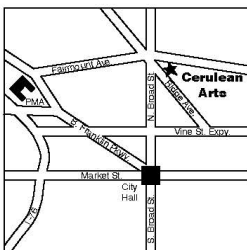
**Ruslan Khais, Howard Neifeld,
Nancy Sophy & Nina Yocom**

September 1 - 24, 2023

Meet the Artists: Saturday, September 9, 2-5pm
Artists' Talk at 2pm followed by a Reception

Front Images:

Top Left: Ruslan Khais, *A Perfect Day. Spring Come to Mountains*, oil & acrylic, 30" x 45"
Top Right: Nina Yocom, *Blowing Bubbles 3*, alcohol ink on paper, 9" x 11"
Bottom Left: Nancy Sophy, *x 9 (Fireflies)*, poppyseed oil & pastel on paper, 16" x 12"
Bottom Right: Howard Neifeld, *Free Fall*, gouache on paper, 8" x 6"



Cerulean Arts

Cultivating an appreciation for art by presenting exhibitions, offering unique decorative and fine art for sale and providing art instruction for personal fulfillment.

Gallery Hours:
Wednesday - Friday: 10 am - 6 pm
Saturday and Sunday: 12 pm - 6 pm



Cerulean Arts

GALLERY · STUDIO

1355 Ridge Avenue
Philadelphia, PA 19123
267-514-8647
www.ceruleanarts.com

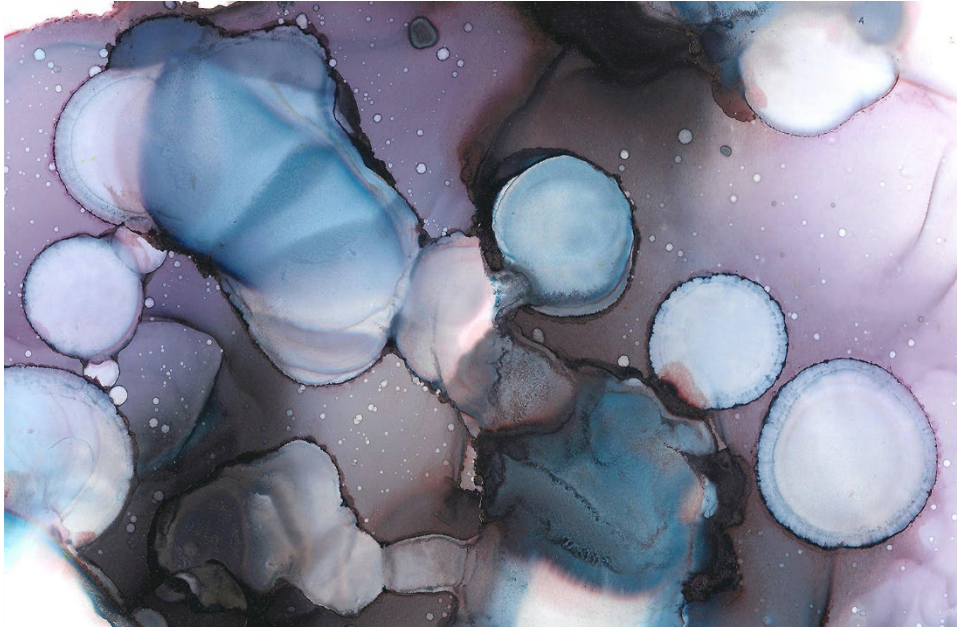
Cerulean Arts is pleased to present *Blurring the Line*, featuring paintings which straddle the line between representation and abstraction by Ruslan Khais, Howard Neifeld, Nancy Sophy and Nina Yocom. Ruslan Khais strives to find a painting language akin to music, one which allows him to emotionally reflect on the reality of the present, but beyond a literal description. The physicality of paint, color and gesture are of paramount importance to his compositions. Nina Yocom allows the flow of alcohol ink to organically form the structure of her paintings, suggesting botanical and landscape subjects. She seeks to express gratitude, hope, healing and self-acceptance in her work. Working with poppy seed oil and pastel, Nancy Sophy's atmospheric imagery draws on memory and a sense of dislocation. One becomes lost within the transforming effects of light on, within, and through her surface. In Howard Neifeld's gouache and acrylic paintings, abstract shapes represent movement, color and light. These "life forms" clash and struggle, shift space and sometimes connect with living forms in the landscape.

Gallery hours: By appointment: Wednesday, Friday, Saturday: 1 PM to 5 PM

September 2023

Art Natters: Members News

From Sketch Club member **Nina Yocom**



**“Blowing Bubbles No. 3”
9 x 11 Framed
Alcohol Ink on Paper**

Sketch Club member **Pat Wilson-Schmid** had four new paintings on display at the Off The Wall Gallery.

Off the Wall Gallery
4059 Skippack Pike
Skippack PA 19474
Phone # 610-222-2289.

The Gallery is open Wednesday through Sunday 10 AM to 5 PM.

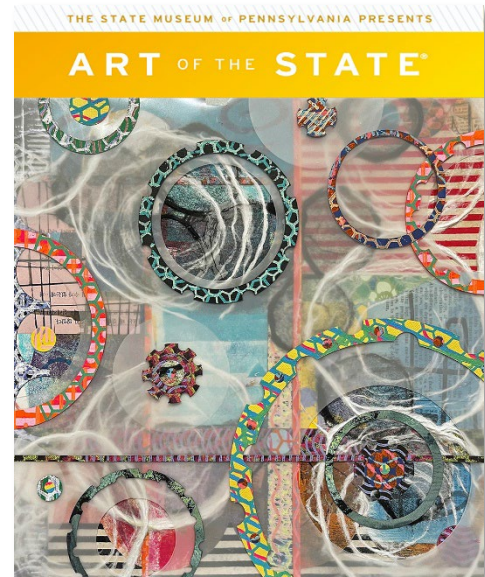
Art Natters: Members News

Here are some exhibitions that Sketch Club member **Robert Reinhardt** will be included in in the next few months.

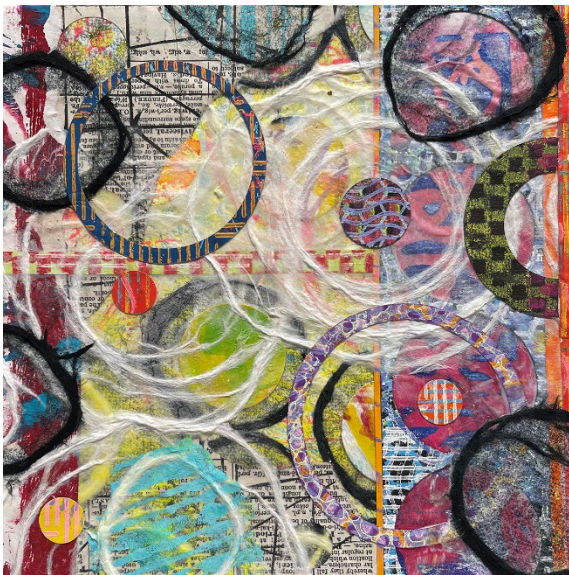
1. I am honored to receive the news that my work, "Portals #1" has been chosen to be exhibited in Art of the State 2023 at The State Museum of Pennsylvania. The work is a mono-print collage sized 12' x 12'. The show dates are September 10, 2023 - January 7, 2024.

2. One of my mono-print collages, "Storm in a Teacup" has been accepted into the Cerulean Arts 11th Annual Juried Exhibition. The show runs from June 21 - July 23, 2023.

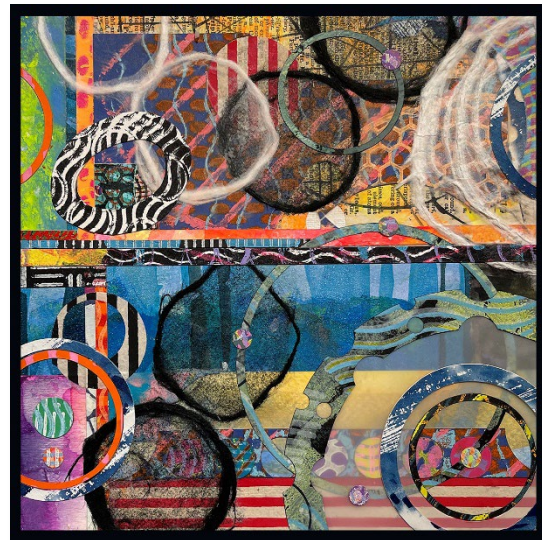
3. I am very pleased to have been accepted into The Abington Art Center's 2023 Summer Juried show. The show runs from June 9 - July 24. My accepted work is titled "Eye of the Hurricane" - a mono-print collage - 8" x 8". It's going to be a very busy summer!



Portals #1



Eye of the Hurricane



Storm in a Teacup

Gallery hours: By appointment: Wednesday, Friday, Saturday: 1 PM to 5 PM

September 2023

Art Natters: Members News

Sketch Club member and Sketch Club Critique Group Monitor **Don Gauger** won first place and a gallery show at the National Cryptologic Museum.

The National Cryptologic Museum had an unusual art contest: design original artwork that contained a hidden message "Knowledge is Power." Hiding messages in art is also known as Steganography.

Don's artwork, with solution, is on display for six months. The museum is located in Annapolis Junction, MD. Photos of the museum's grand reopening reception are posted https://www.graylandstudio.com/an-occasional-journal/blog_posts/an-unusual-exhibition-opens-at-the-ncm at: The solution will be posted in six months.



Steganographic artwork by Don Gauger, "KNOWLEDGE IS POWER"

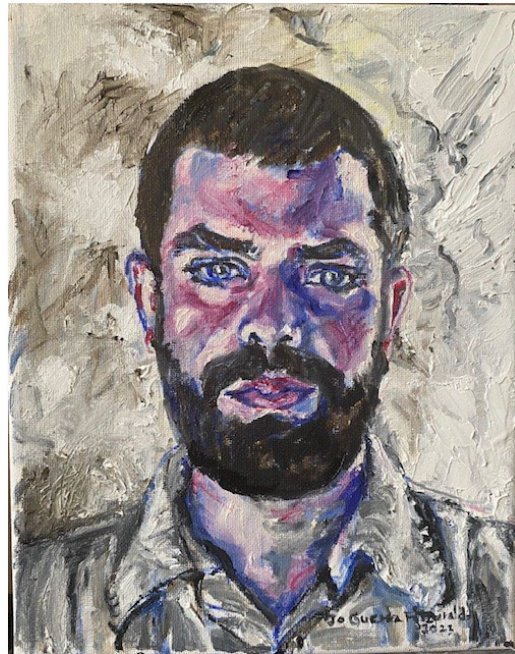
Opportunities/Notices

As a courtesy to our non-PSC-member friends, in support of the Philadelphia artist community, we publish your notices, etc., free of charge. However, contributions to the PSC are always welcome. And we will gladly consider your application for membership

[Contribute to the Sketch Club Here](#) [Apply for PSC Membership Here](#)

Maria Fitzgerald

Nuri 8x10 oil on canvas



Nuri

Gallery hours: By appointment: Wednesday, Friday, Saturday: 1 PM to 5 PM

September 2023

Opportunities/Notices

FLORAL STILL LIFE PAINTING WITH ELIZABETH HELLER AT CERULEAN ARTS 1355 Ridge Ave., Philadelphia, Pa. 19123



FOLLOW THE LINK FOR MORE INFORMATION:
[https://ceruleanarts.com/products/
floral-still-life-painting-with-elizabeth-heller](https://ceruleanarts.com/products/floral-still-life-painting-with-elizabeth-heller)

<https://ceruleanarts.com/products/floral-still-life-painting-with-elizabeth-heller>

Opportunities/Notices

Colleen Hammond

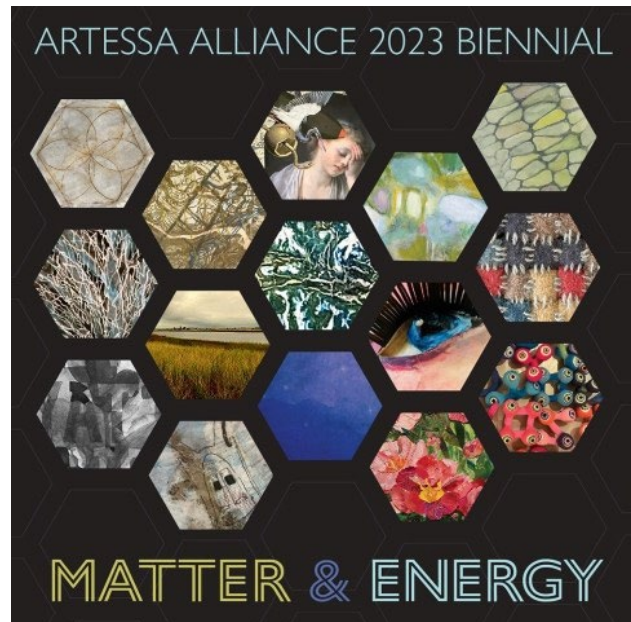
MATTER & ENERGY

An exhibition at Cheltenham Center for the Arts. Artessa Alliance artists interpret concepts of "Matter and Energy" utilizing their creative perspectives. Energy is the external force that transforms materials of matter into works of art. Artessa members will utilize various natural and human-made mediums to communicate emotional psychological, and spiritual forms. Their shared goal is transforming matter through the buoyant energy of creative expression, fostering interconnectedness with each other and the world in which we all live.

Matter and Energy features artwork by Artessa Alliance members Nancy Agati, Nathalie Borozny, Michelle Ciarlo- Hayes, Elena Drozdova, Mo Ganey, Megan Raab Greenholt, Megan Grugan, Colleen Hammond, Janice Hayes-Cha, Brenda Howell, Karen Hunter McLaughlin, Julie Mann, Kimberly Mehler, Glynis Raisch, Rebecca Schultz, Teresa Shields, and Julia Way.

Join us for a public reception on
Thursday, September 14, 2023, from 6-8 pm.
Light refreshments will be served
439 Ashbourne Road, Cheltenham, PA 19012.

Gallery hours:
Monday-Friday, 10am to 5pm, and
Sundays in September 10, 17, 14 and October 1 from noon to 2pm.



Membership

Stay in touch with current Sketch Club Members

Don't let sheltering in place prevent you from staying in touch with your Sketch Club friends and colleagues. Sketch Club members can access contact information for all current members. Go to the members only page at: <http://sketchclub.org/members-only-2/>. After you log-in with the password sent to you in your acceptance email you can click on the Membership Directory link to access members contact information. Non-Sketch Club friends can find a listing of current members along with their websites if they have one at: <http://sketchclub.org/sample-page/current-members-contact-list/>:

Membership

Not a PSC Member?: Join Now!

If you're reading this edition of the Portfolio and you're not a member of the PSC, you should consider joining the more than 200 other Philadelphia area artists who have. The PSC is one of the most active visual art venues serving center city Philadelphia. The PSC is a hands-on organization that offers its members the opportunity to participate in all aspects of creating and presenting work to the public. It presents over 20 scheduled group and solo exhibitions annually and offers a wide range of daily workshops. [Get info and an application here.](#)

If you are a member of the PSC, please feel free to share the Portfolio with your artist friends and encourage them to become members.

Membership Renewal

You can check the status of your membership by going to the Current Members page on the PSC web-site: <http://sketchclub.org/sample-page/memberspace/>. All current members are listed. An asterisk (*) means that the membership has expired but is within the 60-day grace period for renewal. Names in red are active links to the individual's web site.

Renew Now! <http://sketchclub.org/annual-dues-payment/>

If you have any questions about your membership, please don't hesitate to contact us at membership@sketchclub.org or call the office: 215-545-9298.

Support the Sketch Club

Contribute

Please consider making your tax-deductible contribution now. These funds will be put to good use providing enhanced services to our members and friends.

Membership dues cover only a small portion of the PSC's operating expenses. Competition for funding for arts organizations like the Sketch Club is increasingly competitive and total funding for the arts is shrinking. Your additional support will keep the PSC an active support for visual artists in the Metropolitan Philadelphia area. The Philadelphia Sketch Club is an IRS designated 501(c) (3) non-profit organization.

You can call the office at 215-545-9298, mail checks to the Sketch Club or visit the Contribute page of our website.

Visit our **Contribute** page of our website to give online at:

<http://sketchclub.org/support-us/>

You can also support the PSC on an ongoing basis when you shop on Amazon. Go to:

<http://smile.amazon.com/> and enter the Philadelphia Sketch Club in the Pick your own charitable organization box.

Gallery hours: By appointment: Wednesday, Friday, Saturday: 1 PM to 5 PM

September 2023

Support the Sketch Club

Your support makes it possible for the PSC to continue providing ongoing daily workshops and numerous annual gallery exhibitions.

Like, Link & Share

If you're not following the Philadelphia Sketch Club on Facebook re-tweeting Sketch Club tweets yet, it's time that you did. We have well over 2000 Facebook followers. Get the word out about the Sketch Club. Please click the like button and share your comments and invite your friends to like our page.

Follow @PhilaSketchClub on Twitter, we have almost 400 followers. Please click the heart button and re-tweet our announcements.

Include links on your website, blogs and social media to The Philadelphia Sketch Club to increase traction across social media platforms.

Follow us on Facebook, Twitter and Instagram now!



Classifieds



Your Ad Here... Have something to sell? Looking for something?
Contact portfolio@sketchclub to arrange for posting.



Gallery hours: By appointment: Wednesday, Friday, Saturday: 1 PM to 5 PM

September 2023

The Portfolio: The newsletter of the Philadelphia Sketch Club is published monthly. Editor, technical support, and webmaster: Ken Weiner. Send your member news, announcements and corrections to

portfolio@sketchclub.org. The due date for all materials is one week before the end of the month.

Back issues of the Portfolio are available at: <http://sketchclub.org/portfolio-archive/>

Thanks to PSC member volunteer **Ken Weiner** for his ongoing support of Sketch Club technology and communications functions.

The Philadelphia Sketch Club

235 S Camac Street
Philadelphia, PA 19107
(215) 545-9298
<http://sketchclub.org/>
gallerymanager@sketchclub.org
info@sketchclub.org

Gallery Manager: Josie Rowley

Officers:

- President: Richard Harrington
- Vice President: Kenneth Weiner
- Secretary: Elise Anzini
- Treasurer: William Patterson

Board of Directors:

- John Attanasio
- Clayton Bright
- Melvin A. Chappell
- Renard Edwards
- Michael A. Fernandez
- Chris Fowler
- Stephen Iwanczuk
- Tiger Jaser
- Joe Salgado