

Gallery hours: By appointment: Wednesday, Friday, Saturday: 1 PM to 5 PM

October 2023



OCTOBER

The Philadelphia Sketch Club's 163 Anniversary Gala

2023

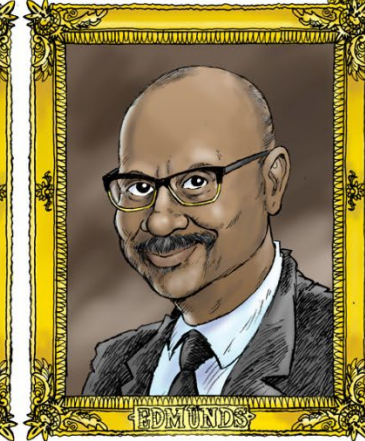
October 21st, 2023 • 6 to 10 PM

Honoring

Jill A. Rupinski • Kyle Cassidy • Allan L. Edmunds



Medal
Presentation
Live Art
Auction
Silent
Auction
Cocktails
Deluxe Hors
d'oeuvres
Live Music



Help support
the Sketch Club
Buy tickets
or make a
donation at
sketchclub.org
or call
215.545.9298

For Pre-Gala viewing of art work and absentee bidding, contact Bill Patterson at bpatterson2045@comcast.net or 267.664.2434

Rich Harrington

This Month's Portfolio – (Click on the entry to view)

Sketch Club 163 rd Anniversary Gala	2
Sketch Club Open Workshop	8
Open Studio Schedule	8
Fees	9
Volunteer	11
Sketch Club Critique Group	12
Main Gallery Events	15
Stewart Gallery Events	16
Members/Friends Alert	17
Sketch Club Board of Directors	19
Art Natters: Members News	20
Opportunities/Notices	27
Membership	31
Support the Sketch Club	31
Classifieds	32

Send your member news, announcements, and corrections to:
portfolio@sketchclub.org. The deadline for ALL submissions is
1-week before the end of the month.

Reminder: It's never too late. You can always renew
your membership

You may pay online at <http://sketchclub.org/annual-dues-payment/> or mail your check to:

The Philadelphia Sketch Club

235 S. Camac St.

Philadelphia, PA 19107

For questions please contact the Gallery Manager at
215-545-9298 or email:

gallerymanager@sketchclub.org

Late Breaking News – See items that were submitted
after the publication date. Go to:

<http://sketchclub.org/late-breaking-news/>

The PSC general email is: info@sketchclub

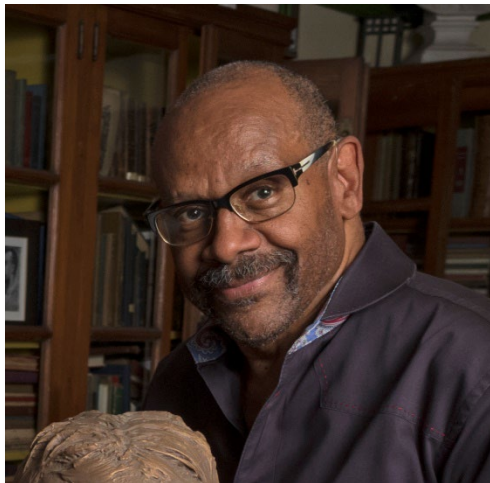
Sketch Club 163rd Anniversary Gala

Our Honored Artists for the 163rd Anniversary Gala

At the 163rd Anniversary Gala, the Philadelphia Sketch Club presents Philadelphia Sketch Club Medals to:

- Allan L. Edmunds,
- Jill A. Rupinski, and
- Kyle Cassidy

for their creativity and achievements in the visual arts.



Allan L. Edmunds - Born in Philadelphia, PA, Allan L. Edmunds is an artist, educator, and arts administrator with more than fifty years of accomplishments in all three areas. A graduate of Tyler School of Art & Architecture (BFA, MFA), Temple University in Philadelphia and Rome, Italy, he also studied as an Arts Management Fellow at the Getty Museum Management Institute and was a Senior Research Fellow in printmaking-computer graphics at the South

Glamorgan School of Art, Cradiff, Wales, UK.

Edmunds has received the National Endowment for the Arts and Pennsylvania Council on the Arts Artists Fellowship Awards, and the New York City Print Center Award for Arts Administration. He was awarded the Distinguished Alumni Award by Temple University.

And, Edmunds was honored by the International Review of African American Art as one of 25 Who Made A Difference in American Art (25th Anniversary Issue, 2001).

As Founder-President Emeritus of the Brandywine Workshop and Archives in Philadelphia (1972-2022), Edmunds built an internationally respected art institution focused on the art of printmaking.

In addition to receiving the Philadelphia Sketch Club Medal for creativity and achievement in the visual arts in 2023, Alan will also be receiving the Founder's Award from Fleischer Art Memorial.

Sketch Club 163rd Anniversary Gala



Jill A. Rupinski -A Professor of Painting and Drawing in the Bachelor of Fine Arts (BFA) Degree Program, Chairperson of the Fine Arts Department and Coordinator of the Annual Student Exhibition at the Pennsylvania Academy of the Fine Arts (PAFA). Jill received a Four-Year Certificate from PAFA in 1977 and a BFA from the Philadelphia College of Art, 1981. In 1985 Jill attended a one-month residency in painting at the Vermont Studio School, Johnson, VT.

Jill began her teaching career in the Continuing Education Program at PAFA in 1988. In 1990 she was invited to teach in the Certificate Program and in 1993 she became an Appointed Faculty Member and Chairperson of the Painting Department, a position that she held for six years. Simultaneously she began teaching at the Wayne Art Center, Wayne PA, which lasted twenty-five years. Jill has

taught classes and workshops and served as a juror at numerous art centers, galleries, and museum programs throughout eastern Pennsylvania and the greater Philadelphia region. Since 2012 she has been invited to instruct at the Maurice River School at the Barn Studio, Millville, NJ. She has been a charter member of the No Boundaries Art Workshops team, teaching in overseas venues of Seillans, France, and the Isle of Arran, Scotland. She is a member of the French Creek Art Colony, in Pennsylvania, which is a group of plein-air painters.

Jill's art focuses on both portraiture and landscape, and she has painted many commissioned portraits. Narrative content is woven into her imagery. For the past two decades she has drawn inspiration from contemporary issues and events, specifically for her landscapes. Once her idea is formed, she works from drawings, oil sketches, memory and imagination using classical compositional devices and traditional materials. In addition to oil painting Jill works in soft pastel. In the 1980's she developed mixed media and wet pastel techniques promoting these methods that make pastel safer to handle, provide for more diverse mark making, faster application of under-painting with surface coverage, and greater stability.

Among her many awards, she was selected in 2014 to participate in the Senior Artist Initiative Oral History Project and Video Documentary, in 2013 she received a Faculty Grant from PAFA to support plein-air teaching and travel in France, in 1997 Jill received the Percy Owens Memorial Award for a Distinguished Pennsylvania Artist from the Fellowship of PAFA. Affiliation by jury 1988/89 to the Creative Artists Network, and in 1989 participated in an artist exchange in Spain, culminating in a Spanish Exchange Exhibition at the Port of History Museum, Penn's Landing, Phila., PA. As a student of PAFA, Jill received a Cresson Travel Scholarship in 1976 and the first Philadelphia Mayor's Award from PAFA in 1977. Jill's work resides in collections of the University of Pennsylvania, College of Physicians, Pennsylvania Hospital, Federal Reserve Bank, Arcadia, Colgate, and Villanova Universities. Jill is represented by Cerulean Arts Gallery in Philadelphia, PA.

Sketch Club 163rd Anniversary Gala



Kyle Cassidy - Occasionally irreverent, sometimes larger than life, but endlessly creative, Kyle Cassidy has lent a compassionate eye to the visual ethnography of America since the early 1990's. As a prolific photographer and accomplished writer, he has skillfully combined his talents to explore the diverse tapestry of American life, creating striking images and thought-provoking narratives that resonate, challenge, and inspire.

Born with an innate curiosity, Cassidy's photographic journey began as a quest to document the ordinary and extraordinary facets of American society. Over the years, he has embarked on projects that reflect his unwavering commitment to storytelling through imagery. His eclectic subjects have

included oil workers in the bustling boomtowns of North Dakota, enigmatic librarians, fraternity houses, visionary NASA scientists, fearless roller girls, celebrated science fiction writers, and an array of talented actors and musicians. Leica Camera has called him "A master of the unexpected." What sets Cassidy apart is his ability to capture the essence of his subjects, revealing the often unseen or overlooked aspects of their lives. Whether exploring the intricacies of tattoo culture within the armed forces, showcasing the diverse faces of librarians in "This is What a Librarian Looks Like," or delving deep into the homes and hearts of gun owners in "Armed America: Portraits of Gun Owners in Their Homes," Cassidy's work is marked by its profound humanity.

Kyle Cassidy's contributions to the world of photography have not gone unnoticed. He has been recognized with four Keystone Journalism awards for his exceptional photographic work, a testament to his dedication to the craft. In addition to his prowess behind the lens, Cassidy has also ventured into the realm of literature, co-authoring two fantastical books with renowned novelist Neil Gaiman and singer-songwriter Amanda Palmer: "Who Killed Amanda Palmer" and "The Bed Song Book."

Starting in March of 2020 he began a three-year project documenting the stories of hospital workers for "Between Us and Catastrophe: People on the Front Lines of the COVID-19 Pandemic". His most recent projects are "The Minidoka Barracks: Reuse & Reconfiguration of an American Concentration Camp in the Heartland" with archaeologists Richard Rothaus and Kostis Kourelis, and "The Lopapeysa Sweater: A Journey North in Search of Iceland's Iconic Knitwear" with Joan of Dark.

As an artist, writer, and chronicler of the human experience, Kyle Cassidy continues to challenge our perceptions of the world around us. His unique blend of irreverence, creativity, and compassion has left an indelible mark on the visual and literary landscape of America, and his enduring body of work serves as a testament to his genuine human curiosity and unwavering commitment to storytelling.

Sketch Club 163rd Anniversary Gala

THE PHILADELPHIA SKETCH CLUB'S 163rd ANNIVERSARY GALA



**Philadelphia Sketch Club's 163rd Anniversary Gala, Honoring
Kyle Cassidy, Allan L. Edmunds and Jill A. Rupinski
Saturday, October 21, 2023 – 6 to 10 PM**

**Medal Presentation, Live Art Auction, Silent Auction,
Cocktails, Deluxe Hors d'oeuvres, Live Music**

**For more information and to buy tickets,
visit www.sketchclub.org or call 215-545-9298
235 South Camac Street
Philadelphia, PA 19107**

Photo by Kyle Cassidy

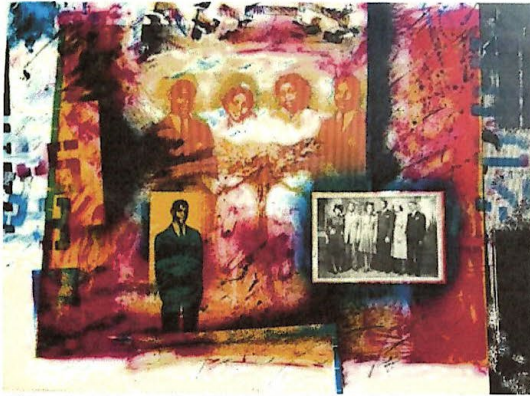
The Philadelphia Sketch Club will be hosting its 163rd Anniversary Gala on Saturday, October 21, 2023, from 6 PM to 10 PM. One of the highlights of the event is that we will be honoring three of the nation's top artists; Kyle Cassidy, Allan L. Edmunds, and Jill A. Rupinski. We will be presenting each with the Philadelphia Sketch Club Medal for their significant achievements in the visual arts. This will be a fun and highly visible event. It will bring together our members, patrons, supporters, friends, sponsors, and neighbors. It will feature a live art auction, silent auction, deluxe hors d'oeuvres, cocktails, and music.

[Complete Details](#) [Purchase Tickets](#)

Sketch Club 163rd Anniversary Gala

Auction Items

The Philadelphia Sketch Club
163rd Anniversary Gala, Live Auction Items
October 21, 2023 – Page 1



Allan L. Edmunds, *EFA II*, Offset lithograph and collage, 16/40, image 22"x30"



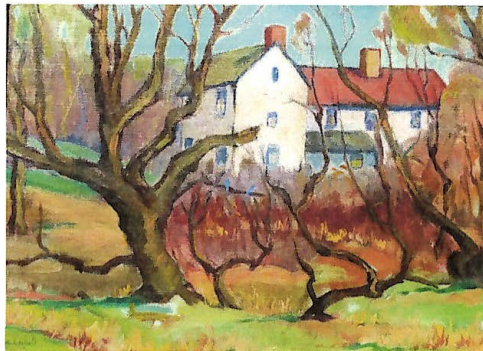
Kyle Cassidy, *Between Us and Catastrophe*, Photograph (Details to be provided)



Kyle Cassidy, *Addie*, Photograph (Details to be provided)



Jill A. Rupinski, Pastel (Details to be provided)



George Lear, (1879-1956), *Rural Architectural Landscape*, Oil on canvas, 12" x 16



Domenic DiStefano, *AWS*, (1924-2011), *The Yellow House*, Watercolor, 30"x38"

Sketch Club 163rd Anniversary Gala

Auction Items

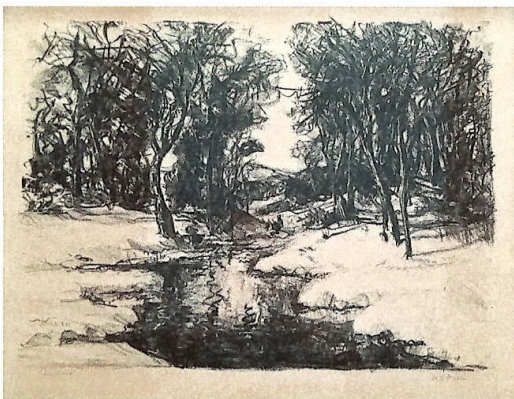
The Philadelphia Sketch Club
163rd Anniversary Gala, Live Auction Items
October 21, 2023 – Page 2



Paul Rickert, (1947-2023), *Stormy Day*, 1970,
Watercolor, 25"x30"



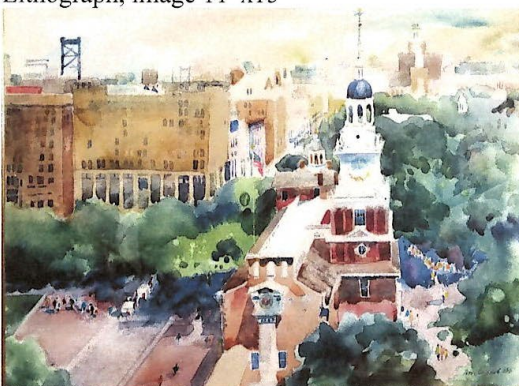
Cesare A. Ricciardi, (1892-1973), *Boats in Harbor*,
Oil on canvas board, image 12"x16"



Walter E. Baum, (1884-1956), *The Brook*,
Lithograph, image 11"x15"



Joseph C. Claghorn, (1869-1947), *A Vermont
Sugar Camp*, Watercolor, 21" x 33"



Doree Loschiavo, *Above Independence Hall*,
Watercolor, 21.5" x 29"

Sketch Club Open Workshop

Open Studio Workshops

Our workshops provide a welcoming open studio environment where artists of all levels can gather to create, learn, and connect. Whether you're an experienced artist seeking to refine your techniques or a newcomer eager to explore your creative side, our workshops offer a space where you can draw and paint the human figure from a life model, nude and clothed. We offer a variety of sessions from short dynamic gestural poses to long classical poses, offering opportunities to fully explore the human form.



Our spacious studio space has been recently renovated. Newly installed gallery lighting--with ultraviolet filters to protect paintings--is ideal for working artists. The space is bathed in natural light.

Open Studio Schedule

Mondays: 6:30 PM - 9:30 PM Nude model, short and long poses Monitor: Bob Bohne	Tuesdays: 12:00 PM - 3:00 PM Nude model, long pose Monitor: Volunteer	Wednesdays: 6:30 PM - 9:30 PM Nude model, short and long poses Monitor: Andrew Goms	Thursdays: 12:00 PM - 3:00 PM Costumed model, long poses Monitor: Bob Bohne	Saturdays: 9:30 AM - 12:30 PM Nude model, gestural, short, and long poses Monitor: Tiger Jaser
---	--	--	--	---

No prior signup needed. Join any of our scheduled workshops and bring your own art supplies. We provide chairs, tables, and easels. All workshops are held in the Sketch Club's upstairs gallery and are open to the public and run weekly, excluding holidays and inclement weather. The schedule above is accurate as of 2023, cancellations will be posted to the front page of Sketchclub.org, and timely notifications will be sent to the workshop mailing list. Join our workshops mailing list to stay informed of the latest workshop activities, schedule updates, and learn about upcoming sessions.

Sketch Club Open Workshop

Fees

\$9 for members ([become member](#))

\$10 for non-members

\$6 for full-time students (student ID required)

- Our workshops are open to individuals at any skill level
- You do NOT have to be a member of the Philadelphia Sketch Club to participate in the workshops.
- You must bring your own supplies. Easels, tables and seating are provided
- Only odorless terpenoid or similar solvent permitted, and you must take it with you The PSC does not have facilities for disposal of solvents
- A small number of electrical outlets are available for digital device users
- Workshop attendees have the opportunity to exhibit their work at [The annual Workshop Show](#)

Watch for emails or visit <https://sketchclub.org/workshops/> for more details on the still life workshop and holiday cancellations.

All workshops are open to the public. There is no need to register before attending. You do NOT have to be a member of the Philadelphia Sketch Club to participate in the workshops. Our workshops are open to anyone who is interested in drawing, painting, or printmaking. All skill levels are welcome.

Please Note: Those who use oil paints should bring their own container(s) to remove used solvents.

Odorless solvents only. See more important attendee information at: [Workshop Attendee Responsibilities](#)

Thank you to all the PSC members who donated their time and expertise to make these workshops available to PSC members and the Philadelphia art community.

Our monitors are all volunteers. If you're interested in volunteering, please contact us at workshops@sketchclub.org. If you're interested in modeling for any of our workshops, [sign up here](#)



Sketch Club Open Workshop

Workshop Guidelines

- Please arrive early to find an optimal spot to work in and not disrupt the session during workshop time.
- Fees will be collected by the monitors after the first twenty minutes. Please have cash on hand. Tipping the models is highly encouraged.
- When setting up, please give space for others behind or in front of you. Make sure those in back can see the model.
- Please make every effort to wipe down your easel when leaving and make sure around your easel is clear of charcoal or pastel dust.
- Please observe the easel arrangement in the storage closet and replace your easel in the same manner.
- Please do not use turpentine for oils and bring your own container to dispose of used minerals safely. We ask that you use odorless thinner.
- Please do all aerosol spraying outdoors, front or back yard.
- If there is a need to adjust the pose, please inform the monitor directly, instead of the model.
- Taking pictures of the models is not allowed, unless explicitly permission is granted by the model.
- Anyone who needs a locker or has fees for a locker should contact the office at 215-545-9298 or workshops@sketchclub.org.
- Attendees under 18 require permission slip from legal guardian.
- We always appreciate your feedback.
Let us know if you have any [suggestions or feedback](#)

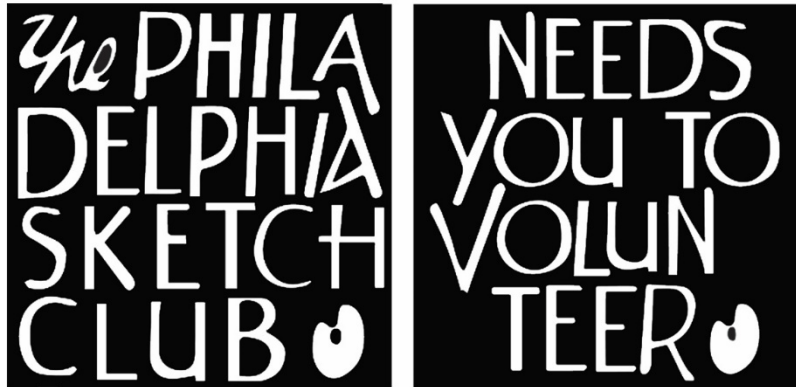
Gallery hours: By appointment: Wednesday, Friday, Saturday: 1 PM to 5 PM

October 2023

Volunteer

Be an Active Sketch Club Member; Volunteer!!

The Philadelphia Sketch Club is managed entirely by volunteers except for the gallery manager, housekeeping, and bookkeeper.



The PSC always needs volunteer members. Volunteering is one of the most important aspects of being a Sketch Club member and it is the one of the best ways to take advantage of the PSC. You'll be working with colleagues who share the same interests and helping the PSC provide unique services to the visual arts community. Sign up for an activity today.

To get involved, contact us at: info@sketchclub.org

Volunteer: The PSC needs a Chairperson to organize and manage upcoming Sketchclub Exhibitions. Contact our PSC Gallery Manager Josie Rowley Gallery Manager at gallerymanager@sketchclub.org for details if you are interested.

Volunteers Needed for Gallery Sitting:

Please contact the office gallerymanager@sketchclub.org, or call the office 215-545-9298 Wednesdays and Fridays 11-5pm. Your assistance would be greatly appreciated.

For more information, please contact our Gallery Manager, Josie Rowley at: gallerymanager@sketchclub.org

Sketch Club Critique Group

The Sketch Club Critique FaceBook Group

Join the Critique Facebook Group

Join your Club colleagues online at the "Philadelphia Sketch Club Critique"-- a Private group for Active PSC members only on Facebook.



Colleagues, please join in and contribute to your online art community. We all miss the camaraderie we enjoy at the Club house. The "Philadelphia Sketch Club Critique" is a chance to get together online until we can gather once more around the punch bowl and raise a toast, "to the Sketch Club, past, present and future."

Here's how it works:

- Active members go to the new "Philadelphia Sketch Club Critique" page and request access, which is available to all Club members in good standing.
- Once in post your work and watch as other members' post their artwork for critique.
- More details will be posted within the group including the option to be considered for a monthly "Highlights", a curated online gallery to be published on our external site/Instagram/Twitter channels.

This Facebook Group is private; this means that as Members submit their work others are invited to critique each other in a professional and respectful way.

Critique Group Links:

- You can find a link on the Sketch Club website: <https://sketchclub.org/>
- The Critique Group's Facebook Page: <https://www.facebook.com/groups/PSCCritique>
- The PSC's main FaceBook page: <https://www.facebook.com/thesketchclub>

Sketch Club Critique Group

Artificial Intelligence (AI) Image Generation Tools – by Don Gauger

New tools are being offered almost daily using AI engines. First is the generative quality of AI. A creator crafts a text inquiry and the AI engine generates variations. Just like getting good search query results requires a well crafted text query, the quality of the output image depends on the skill in writing a good description. As for design, the quality of the imagination of the creator, and how successfully they describe it, will make a huge difference in the quality of the final design's impact.

It is possible that AI image generation will pass through a phase much like photography did, where classic artists disparaged photos as not really being art. Most artists now recognize true artistry in the best photography.

Perhaps AI generated images will become another artist's tool. Digital artists might use an AI generated image as a starting point, then layer their own work on top of it. Only time will tell.

Here are two examples of AI generated images using a text-to-image engine.

The first was created using the OpenAI DALL-E 2 tool found at <https://labs.openai.com>. The second was using the Adobe Creative Cloud Betta text-to-image engine

As you can see from these examples, the AI engines respond differently, and the types of images create vary a great deal.



OpenAI DALL-E 2 tool: "Santa posing for a crowd of artists painting at their easels with Philadelphia city hall in the background and light snow flurries and Christmas lights"



Adobe Creative Cloud Betta: "Santa posing for a crowd of artists painting at their easels with Philadelphia city hall in the background and light snow flurries and Christmas lights"

Sketch Club Critique Group

Art related Internet News Articles

National Geographic Article: These 18 Autochrome Photos Will Transport you to Another Era: The method used to make these dreamy photographs resulted in a painting-like quality that not even today's best Instagram filters can replicate. <https://www.nationalgeographic.com/history/article/autochrome-photography-archive-vintage-historyhttps://thehustle.co/can-you-get-sued-for-using-a-meme/>

From the Hustle: Can you get sued for using a meme? <https://thehustle.co/can-you-get-sued-for-using-a-meme/>

New venture: Christie's, the prominent auction house, announced it's launched an in-house VC arm called Christie's Ventures, which will focus on art and crypto startups.

https://www.wsj.com/articles/christies-venture-capital-nft-11657916141?st=lzm39fmehqkiwu4&reflink=desktopwebshare_permalink

Can a corporation "own" a color?

<https://thehustle.co/can-a-corporation-trademark-a-color/>

A Humorous take on Art: The Blanton Museum of Art in Austin, Texas, challenged bakers to recreate any of its 21k works of art as cake. See the entries here.

<https://www.smithsonianmag.com/arts-culture/this-museum-is-asking-people-to-remake-famous-artworks-with-cake-180980152/?>

<https://www.instagram.com/explore/tags/blantonbakeoff/>

Philly Mural Arts program: Philly has more than 4,000 murals—and counting

<https://www.nationalgeographic.com/travel/article/this-city-has-more-than-4000-murals?>

Women in the arts: The women who redefined color - BBC Culture

<https://www.bbc.com/culture/article/20220401-the-women-who-redefined-colour>

In Memorium: Highlights of the QEII portrait exhibit:

<https://news.artnet.com/art-world/30-portraits-of-queen-elizabeth-ii-332442>

Tax Info for Artists

Sketch Club members might be interested in this summary article with 2022 tax information for freelancers.

-- Submitted by Don Gauger

<https://blog.freelancersunion.org/2022/01/11/whats-new-for-freelancers-in-tax-year-2022/>

Gallery hours: By appointment: Wednesday, Friday, Saturday: 1 PM to 5 PM

October 2023

Main Gallery Events

Phillustration 2023



**Join us at our closing reception:
Sunday October 22nd, 1-3pm**

For a sneak-peak at the show: <https://sketchclub.org/phillustration2023/#gallery>:

Gallery hours: By appointment: Wednesday, Friday, Saturday: 1 PM to 5 PM

October 2023

Main Gallery Events

Gallery Hours: Wednesday, Friday, Saturday 1 to 5pm

[See the Sketch Club Open Gallery](https://sketchclub.org/exhibition-schedule-2023/)
<https://sketchclub.org/exhibition-schedule-2023/>
[Important Dates for all PSC Activities](#)

Stewart Gallery Events



Exhibition space in the Stewart Gallery is available for PSC Members!

Reserve the gallery by contacting our
Exhibition Coordinator:
exhibitions@sketchclub.org

The space is \$150 for a month. Members can show once in the Stewart Gallery per year.

Visit the Sketch Club Online Gallery

Go to the Sketch Club's on-going open gallery to see recent updates with work by PSC members and friends:

<http://sketchclub.org/sketch-club-open-gallery/>.

Members and friends can submit up to 4 images. Send your submissions to:

portfolio@sketchclub.org.

Include for your work: Your name; Title; size; and medium.

For photos of yourself, include Who you are and a brief description of the image.

Gallery hours: By appointment: Wednesday, Friday, Saturday: 1 PM to 5 PM

October 2023

Stewart Gallery Events

[See the Sketch Club Open Gallery](https://sketchclub.org/exhibition-schedule-2023/)
<https://sketchclub.org/exhibition-schedule-2023/>
[Important Dates for all PSC Activities](#)

Members/Friends Alert

Sketch Club / Classical Arts Atelier Partnership



The Philadelphia Sketch Club has partnered with Classical Arts Atelier to offer classical drawing classes for teens and young adults on Wednesdays from 3:15-4:45 on an affordable, drop-in basis. Limited spots are available!

Learn drawing techniques used for hundreds of years and studied by artists such as Vincent Van Gogh and Pablo Picasso, beginners welcome! Visit Classical Arts Atelier www.caa-philly.com or to book a class click here (<https://pocketsuite.io/link/classicalartsatelier>).

Have you moved? Changed your email? New phone number?

Don't miss any Sketch Club upcoming events, workshops, or exhibitions. If you change your address, email, or phone number let us know so we can keep your contact information in our database current. You can contact the gallery manager at 215-545-9298 or email to:

<mailto:info@sketchclub.org>

Sketch Club On-Line Gallery: **Always Room for More Work!**

There's always room for more work: Submit Now!

The Sketch Club is hosting an on-going open gallery at: <http://sketchclub.org/sketch-club-open-gallery/>. This gallery is open to PSC members and non-members.

Submit up to 4 images of your work or of yourself working along with a very brief description to: portfolio@sketchclub.org.

Include for your work: Your name; Title; size; and medium.

For photos of yourself include who you are and a brief description of the image.

Members/Friends Alert

On-Line Resources

- The Sketch Club Critique Group: <https://www.facebook.com/groups/PSCCritique>
- The Sketch Club Open Gallery: <https://sketchclub.org/sketch-club-open-gallery/>
- The Sketch Club's web site: sketchclub.org
- Our Facebook page: <https://www.facebook.com/thesketchclub/>
- Instagram: <https://www.instagram.com/philadelphiasketch/>
- Twitter: <https://twitter.com/PhilaSketchClub>
- Members: Stay in touch with other PSC colleagues. For contact information, go to the members only page at: <http://sketchclub.org/members-only-2/>. See Stay in touch with current Sketch Club Members in the members section below for instructions.

Non-Sketch Club friends can find a listing of current members names and business websites if they have one at:

<http://sketchclub.org/sample-page/current-members-contact-list/>.

Meet our new Gallery Manager, Josie Rowley.

We welcome **Josie Rowley** to the PSC as our new gallery manager in July. She will be staffing the PSC office every Wednesday and Friday from 11:00 am to 5:00 pm. and occasionally other times in support of various PSC activities.

Jose describes herself briefly as “a Philly-based illustrator and gallery manager. I love visual storytelling, 2D animation, and painting”.

You can find more about Josie at her website at:

<https://www.josierowleyillustration.com>



Sketch Club Board of Directors

The Sketch Club Welcomes New Director: Chris Fowler



I started out as a graphic artist--I literally spent my childhood drawing. My father was a high school librarian, so every announcement, every bulletin, every memo that came into the library got repurposed for me to draw on the back of. It's how he kept me in paper.

I got interested in making animated movies in middle and high school--in effect making my drawings move--then I shifted over to live action movies (this was in the golden age of super-8 home-movie film). I developed a particular interest in cinematography--an otherwise largely forgotten film of Ingmar Bergman's called, "The Touch," was a particular inspiration; I can't now remember whether I actually wrote for the application to the

New York University Film School, or just seriously thought about doing it, but, in the end, I lost my nerve and went elsewhere.

Then, while I was in college, the Metropolitan Museum of Art held a retrospective exhibition of the works of Edward Steichen, and *Newsweek* magazine, which I was taking at the time, devoted a full page to Steichen's famous early color photograph of the Flatiron Building.

It's been photography ever since.

Gallery hours: By appointment: Wednesday, Friday, Saturday: 1 PM to 5 PM

October 2023

Art Natters: Members News

Sketch Club Member **Nina Yocom** will have a solo exhibition in October at the Art Gallery at St. David's Episcopal Church in Wayne, PA.



THE gift shop & art gallery

Opening Reception

Meet & Greet with
Nina Yocom

TUESDAY
OCTOBER 10
2023

5 PM - 7 PM

763 S. Valley Forge Rd.
Wayne, PA 19087

OCTOBER ARTIST OF THE MONTH

Nina Yocom

stdavidschurch.org/giftsandart

This show will feature 20 of Nina Yocom's alcohol ink paintings including many new pieces on paper, canvas and panel from smaller works at 6" x 6" to larger at 20" x 20". Prints will also be available.

Opening Reception: Tuesday, October 10, 5-7 PM

Free and Open to the Public Wine and light fare will be offered.

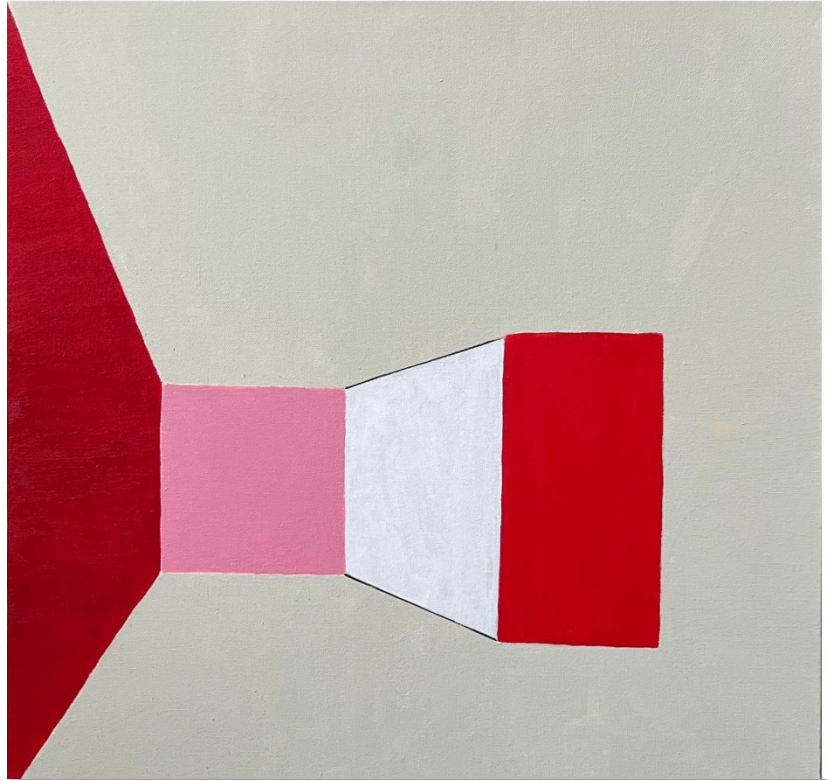
Exhibition: October 2-30, 2023

763 South Valley Road

Wayne, PA 19087"

Art Natters: Members News

Sketch Club member **Joellyn Ross** was honored to have my painting "Into the Void" one of 54 selected out of over 1800 submissions to the 2023 Art2Life International Juried Exhibition. The painting is acrylic, 24 X24".



Into the Void; Acrylic; 24 X 24"

Sketch Club member **Robert Beck's** painting December Scallops (24x30") has been selected by the American Society of Marine Artists for their 19th National Exhibition, at the Albany Institute of History and Art (Sept 8- Dec31), followed by the Minnesota Marine Art Museum, Winona (Jan 19- May 12, 2024).

Robert is a signature member of ASMA, and his work represented the organization in the first International Marine Art Exhibition in 2021-22. Robert Received the PSC Medal in 2014 and was featured in It's Personal, a solo exhibition at the Michener Museum in 2021.



December Scallops

Gallery hours: By appointment: Wednesday, Friday, Saturday: 1 PM to 5 PM

October 2023

Art Natters: Members News

Sketch Club member **Margaret Montgomery** is part of this year's Philadelphia Open Studios Tour (POST). Margaret will have around ten paintings on view and available for purchase at 915 Spring Garden Street, Studio 303. The studio belongs to Kathleen Catanese, who is generously lending Margaret wall space. Kathleen will also have some of her art on view. Her studio will be open the weekend of October 14 & 15, from noon to 6 pm. We will both be present to discuss anything related to our art. We look forward to answering your questions!

915 Spring Garden Street is home to many studios, many of which will be participating in the tour. So, there will be plenty to take in if you make the trek there. For a map of the Philadelphia Open Studio.

Tour and participant directory: <https://www.cfeva.org/post2023-directory#!directory>



DUMBO, 16" x 20," acrylic by Margaret Montgomery

Gallery hours: By appointment: Wednesday, Friday, Saturday: 1 PM to 5 PM

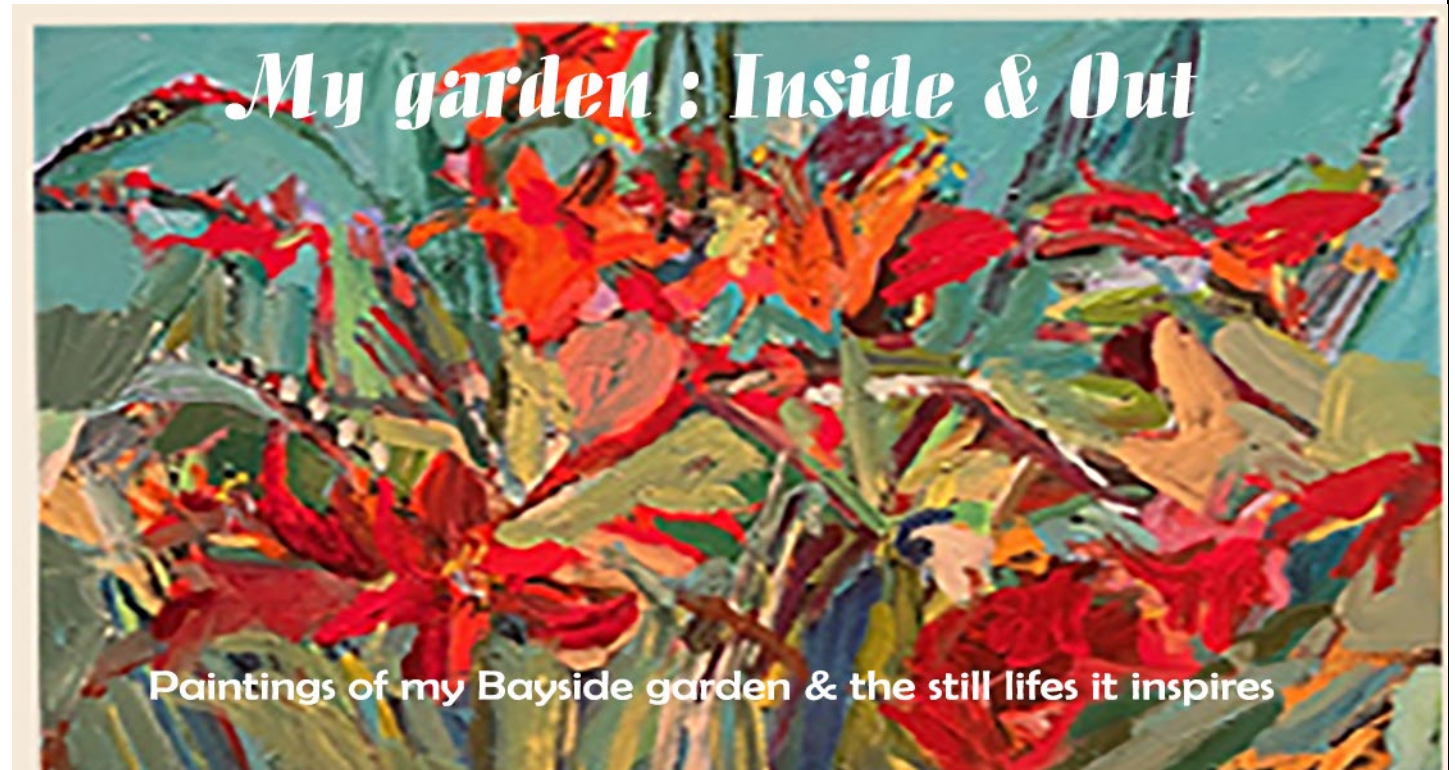
October 2023

Art Natters: Members News

An exhibit by new member of Third Street Gallery & Philadelphia Sketch Club **Sivia Katz Braunstein** at the Third St Gallery, 610 Third Street

Opening November 3, 2-1

Artist Talk and Reception November 12, 2-4



Gallery hours: By appointment: Wednesday, Friday, Saturday: 1 PM to 5 PM

October 2023

Art Natters: Members News

Sketch Club member and board president **Rich Harrington** has illustrated a comic book, collaborating with Don Steinberg, a longtime journalist and New Yorker humor writer. CEREAL is a murder mystery, business satire, and comic fantasy -- and may be the first comic book series ever set in the breakfast cereal world! The hero is a genius cereal inventor on the verge of a game-changing breakthrough. She starts receiving desperate messages from the cereal box cartoon characters, who are being violently killed off. Rich and Don created a fake cereal company filled with corrupt executives, as well as dozens of crazy cereals and characters. Issue #1 of CEREAL is available at:

<https://boinkcomix.com>.



Sketch Club member **Pat Wilson-Schmid** had four new paintings on display at the Off The Wall Gallery.

Off the Wall Gallery
4059 Skippack Pike
Skippack PA 19474
Phone # 610-222-2289.

The Gallery is open Wednesday through Sunday 10 AM to 5 PM.

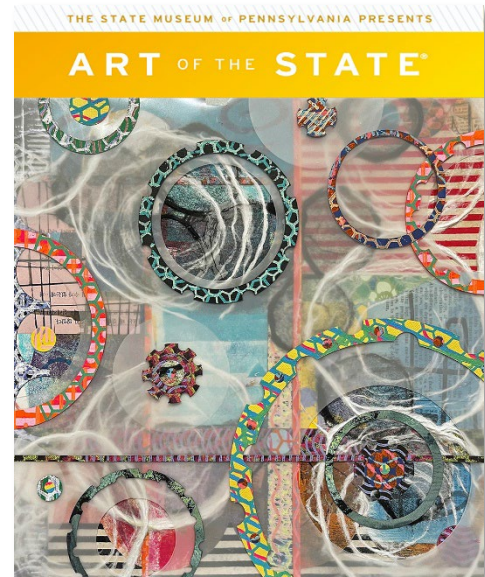
Art Natters: Members News

Here are some exhibitions that Sketch Club member **Robert Reinhardt** will be included in in the next few months.

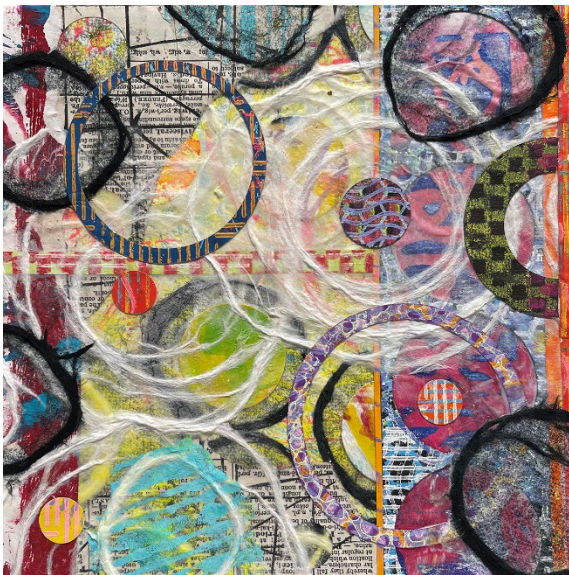
1. I am honored to receive the news that my work, "Portals #1" has been chosen to be exhibited in Art of the State 2023 at The State Museum of Pennsylvania. The work is a mono-print collage sized 12' x 12'. The show dates are September 10, 2023 - January 7, 2024.

2. One of my mono-print collages, "Storm in a Teacup" has been accepted into the Cerulean Arts 11th Annual Juried Exhibition. The show runs from June 21 - July 23, 2023.

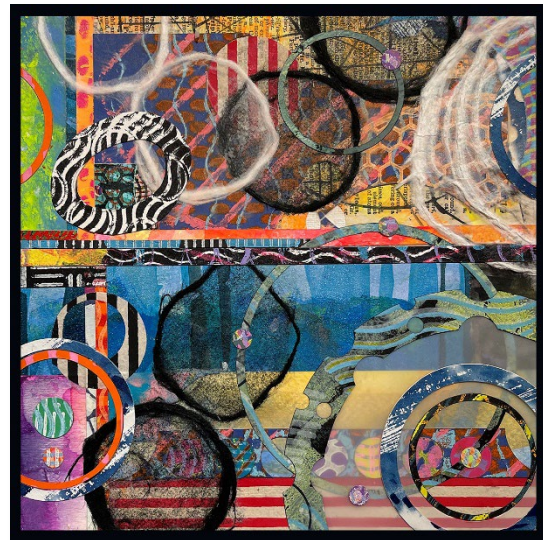
3. I am very pleased to have been accepted into The Abington Art Center's 2023 Summer Juried show. The show runs from June 9 - July 24. My accepted work is titled "Eye of the Hurricane" - a mono-print collage - 8" x 8". It's going to be a very busy summer!



Portals #1



Eye of the Hurricane



Storm in a Teacup

Gallery hours: By appointment: Wednesday, Friday, Saturday: 1 PM to 5 PM

October 2023

Art Natters: Members News

Sketch Club member and Sketch Club Critique Group Monitor **Don Gauger** won first place and a gallery show at the National Cryptologic Museum.

The National Cryptologic Museum had an unusual art contest: design original artwork that contained a hidden message "Knowledge is Power." Hiding messages in art is also known as Steganography.

Don's artwork, with solution, is on display for six months. The museum is located in Annapolis Junction, MD. Photos of the museum's grand reopening reception are posted https://www.graylandstudio.com/an-occasional-journal/blog_posts/an-unusual-exhibition-opens-at-the-ncm at: The solution will be posted in six months.



Steganographic artwork by Don Gauger, "KNOWLEDGE IS POWER"



Gallery hours: By appointment: Wednesday, Friday, Saturday: 1 PM to 5 PM

October 2023

Opportunities/Notices

As a courtesy to our non-PSC-member friends, in support of the Philadelphia artist community, we publish your notices, etc., free of charge. However, contributions to the PSC are always welcome. And we will gladly consider your application for membership

[Contribute to the Sketch Club Here](#) [Apply for PSC Membership Here](#)

Gallery hours: By appointment: Wednesday, Friday, Saturday: 1 PM to 5 PM

October 2023

Opportunities/Notices

Artist Lisa Domenic

the lines that bind



Featured Member Exhibit

October 6th - November 5th 2023

Opening Reception

Sunday October 8th 2p - 4p

Reception & Artist Talk

Sunday October 22nd 2pm- 4pm



610 S. 3rd Street
Philadelphia, PA
(267) 768-6691

Gallery Open

Hours:

Friday 4-7:30pm

Saturday 1-5pm

Sunday 12-4pm

Or By Appointment

E-mail:

3rdstreetgallery@mail.com

UPCOMING EVENTS:

September 24th 2-4pm

ARTIST TALK FOR "TRANSMUTATIONS"
& "LOOKING WITHOUT SEEING"

October 1st 2-4pm

CLOSING RECEPTION FOR "TRANSMUTATIONS"
& "LOOKING WITHOUT SEEING"

October 8th 2-4pm

OPENING RECEPTION FOR ALPHONSE LANE
& LISA DOMENIC NEW SHOWS

NEW
SHOWS

October 14th+15th 12-6pm

PHILADELPHIA OPEN STUDIO TOUR (POST)
MEET OUR ARTISTS AND DISCOVER ART
EAST OF BROAD STREET

3rd
STREET
GALLERY

@3rdstreetgallery

Opportunities/Notices

Don't miss the PAFA Alumni exhibition, No Synthetic Colors. **Colleen Hammond** is honored to have two recent collages in the show amongst many wonderful artists



N
O
S
Y
N
T
H
E
T
I
C

C
O
L
O
R
S

Opening Reception
Saturday, September 23rd
12pm - 3pm.

Walter and Leonore Annenberg Gallery
2nd Flr Hamilton Building

The works in this year's PAFA Alumni exhibition resist easy categorization. In 'No Synthetic Colors' the themes are as varied as the objects, from ecological concerns to technology.

Instead, the pieces are united by a commitment to rigor and innovative thinking, the same qualities that define PAFA's program. From a pea, to a sock puppet, to a scroll, the works are sharp. Some works are witty, some touch upon poignant narratives, while others deliberately embrace ambiguity. Collectively, these objects form a clear picture of the critical work that happens here at PAFA, which, in turn, helps to shape the state of contemporary art.

Featured Artists: Jennifer Baker, Alana Bograd, Gary Bolton, Cynthia Goodman Brantley, Kate Brockman, Rosemarie Chiarlone, Abel Dolby, Emily Elliott, Emily E. Erb, Donna Festa, Richard Gabriele, Bill Garrity, Júlia Godoy, Madeline Good, Yikui (Coy) Gu, Marguerita Hagan, Colleen Hammond, A.D. Herzel, Morgan Hobbs, Abby H. King, Sarah Lesnikoski, Nate Levine, MaryKate Maher, Lolo Katz Nosanchuk, Joshua Schaefer, Ilene Spiewak, Barbara Straussberg, Brian Van Camerik, Sophie Cooper White, Summer Yates



Gallery hours: By appointment: Wednesday, Friday, Saturday: 1 PM to 5 PM

October 2023

Opportunities/Notices

FLORAL STILL LIFE PAINTING WITH ELIZABETH HELLER AT CERULEAN ARTS 1355 Ridge Ave., Philadelphia, Pa. 19123



FOLLOW THE LINK FOR MORE INFORMATION:
[https://ceruleanarts.com/products/
floral-still-life-painting-with-elizabeth-heller](https://ceruleanarts.com/products/floral-still-life-painting-with-elizabeth-heller)

<https://ceruleanarts.com/products/floral-still-life-painting-with-elizabeth-heller>

Membership

Stay in touch with current Sketch Club Members

Don't let sheltering in place prevent you from staying in touch with your Sketch Club friends and colleagues. Sketch Club members can access contact information for all current members. Go to the members only page at: <http://sketchclub.org/members-only-2/>. After you log-in with the password sent to you in your acceptance email you can click on the Membership Directory link to access members contact information. Non-Sketch Club friends can find a listing of current members along with their websites if they have one at: <http://sketchclub.org/sample-page/current-members-contact-list/>:

Not a PSC Member?: Join Now!

If you're reading this edition of the Portfolio and you're not a member of the PSC, you should consider joining the more than 200 other Philadelphia area artists who have. The PSC is one of the most active visual art venues serving center city Philadelphia. The PSC is a hands-on organization that offers its members the opportunity to participate in all aspects of creating and presenting work to the public. It presents over 20 scheduled group and solo exhibitions annually and offers a wide range of daily workshops. [Get info and an application here.](#)

If you are a member of the PSC, please feel free to share the Portfolio with your artist friends and encourage them to become members.

Membership Renewal

You can check the status of your membership by going to the Current Members page on the PSC web-site: <http://sketchclub.org/sample-page/memberspace/>. All current members are listed. An asterisk (*) means that the membership has expired but is within the 60-day grace period for renewal. Names in red are active links to the individual's web site.

Renew Now! <http://sketchclub.org/annual-dues-payment/>

If you have any questions about your membership, please don't hesitate to contact us at membership@sketchclub.org or call the office: 215-545-9298.

Support the Sketch Club

Contribute

Please consider making your tax-deductible contribution now. These funds will be put to good use providing enhanced services to our members and friends.

Membership dues cover only a small portion of the PSC's operating expenses. Competition for funding for arts organizations like the Sketch Club is increasingly competitive and total funding for the arts is shrinking. Your additional support will keep the PSC an active support for visual artists in the Metropolitan Philadelphia area. The Philadelphia Sketch Club is an IRS designated 501(c) (3) non-profit organization.

Gallery hours: By appointment: Wednesday, Friday, Saturday: 1 PM to 5 PM

October 2023

Support the Sketch Club

You can call the office at 215-545-9298, mail checks to the Sketch Club or visit the Contribute page of our website.

Visit our **Contribute** page of our website to give online at:

<http://sketchclub.org/support-us/>

You can also support the PSC on an ongoing basis when you shop on Amazon. Go to:

<http://smile.amazon.com/> and enter the Philadelphia Sketch Club in the Pick your own charitable organization box.

Your support makes it possible for the PSC to continue providing ongoing daily workshops and numerous annual gallery exhibitions.

Like, Link & Share

If you're not following the Philadelphia Sketch Club on Facebook re-tweeting Sketch Club tweets yet, it's time that you did. We have well over 2000 Facebook followers. Get the word out about the Sketch Club. Please click the like button and share your comments and invite your friends to like our page.

Follow @PhilaSketchClub on Twitter, we have almost 400 followers. Please click the heart button and re-tweet our announcements.

Include links on your website, blogs and social media to The Philadelphia Sketch Club to increase traction across social media platforms.

Follow us on Facebook, Twitter and Instagram now!



Classifieds



Your Ad Here... Have something to sell? Looking for something?
Contact portfolio@sketchclub to arrange for posting.



Gallery hours: By appointment: Wednesday, Friday, Saturday: 1 PM to 5 PM

October 2023

The Portfolio: The newsletter of the Philadelphia Sketch Club is published monthly. Editor, technical support, and webmaster: Ken Weiner. Send your member news, announcements and corrections to

portfolio@sketchclub.org. The due date for all materials is one week before the end of the month.

Back issues of the Portfolio are available at: <http://sketchclub.org/portfolio-archive/>

Thanks to PSC member volunteer **Ken Weiner** for his ongoing support of Sketch Club technology and communications functions.

The Philadelphia Sketch Club

235 S Camac Street
Philadelphia, PA 19107
(215) 545-9298
<http://sketchclub.org/>
gallerymanager@sketchclub.org
info@sketchclub.org

Gallery Manager: Josie Rowley

Officers:

- President: Richard Harrington
- Vice President: Kenneth Weiner
- Secretary: Elise Anzini
- Treasurer: William Patterson

Board of Directors:

- John Attanasio
- Clayton Bright
- Melvin A. Chappell
- Renard Edwards
- Michael A. Fernandez
- Chris Fowler
- Stephen Iwanczuk
- Tiger Jaser
- Joe Salgado