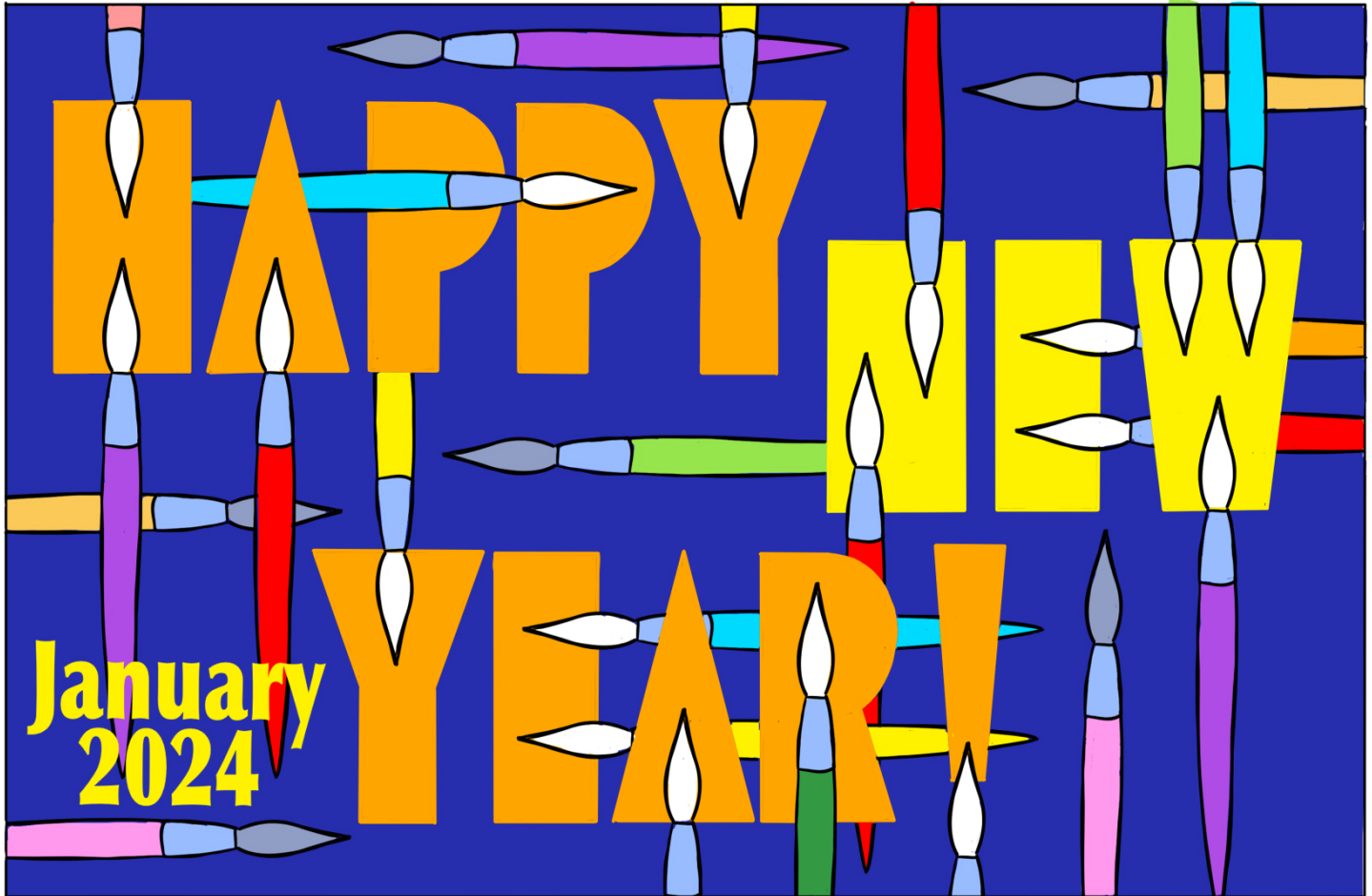


Gallery hours: By appointment: Wednesday, Friday, Saturday: 1 PM to 5 PM

January 2024



Rich Harrington

This Month's Portfolio – (Click on the entry to view)

Sketch Club 163 rd Anniversary Gala	2
Sketch Club Open Workshop	5
Open Studio Schedule	5
Volunteer	8
Sketch Club Critique Group	9
Main Gallery Events	12
Stewart Gallery Events	17
Members/Friends Alert	18
Art Natters: Members News	20
Opportunities/Notices	33
Membership	37
Support the Sketch Club	37
Classifieds	38

Send your member news, announcements, and corrections to: portfolio@sketchclub.org. The deadline for ALL submissions is 1-week before the end of the month.

Reminder: It's never too late. You can always renew your membership

You may pay online at <http://sketchclub.org/annual-dues-payment/> or mail your check to:

The Philadelphia Sketch Club

235 S. Camac St.

Philadelphia, PA 19107

For questions please contact the Gallery Manager at 215-545-9298 or email:

gallerymanager@sketchclub.org

Late Breaking News – See items that were submitted after the publication date. Go to:

<http://sketchclub.org/late-breaking-news/>

The PSC general email is: info@sketchclub

Sketch Club 163rd Anniversary Gala

The 163rd ANNIVERSARY GALA

Images of Items sold at the Gala's Live Auction

As reported last month, the Philadelphia Sketch Club's 163rd Anniversary Gala held on 10/21/2023 was a fun filled event.

Kyle Cassidy, Allan L. Edmunds and Jill A. Rupinski were honored for their achievements in the visual arts and were presented with Philadelphia Sketch Club Medals.

Many of the festivities were recorded in a video prepared by the artist and videographer Juan Gomez.

Here is a link to Juan's video:

[Gala Video](#)



**Jill A. Rupinski, *Eye in the Storm*,
Pastel, 32.5" x 26.25"**



**Kyle Cassidy, *Between Us and Catastrophe*,
Photograph, 23" x 15"**



Kyle Cassidy, *Addie*, Photograph, 15" x 23"



**Allan L. Edmunds, *EFA II*,
Offset lithograph and collage,
16/40, 22" x 30"**



**Domenic DiStefano, *AWS, (1924-2011),
The Yellow House*, Watercolor, 30"x 38"**



**Doree Loschiavo,
Above Independence Hall,
Watercolor, 21.5" x 29"**

Sketch Club 163rd Anniversary Gala



Paul Rickert, (1947-2023),
Stormy Day, 1970,
Watercolor, 25" x 30"



Cesare A. Ricciardi, (1892-1973),
Boats in Harbor,
Oil on canvas board, 12" x 16"



Walter E. Baum, (1884-1956),
The Brook,
Lithograph, 11" x 15"



Joseph C. Claghorn, (1869-1947),
A Vermont Sugar Camp,
Watercolor, 21" x 33"



George Lear, (1879-1956),
Rural Architectural Landscape, Oil on canvas,
12" x 16"

Sketch Club 163rd Anniversary Gala

The Philadelphia Sketch Club's 163rd Anniversary Gala was held on 10/23/2023 and was a successful and fun-filled event. Kyle Cassidy, Allan L. Edmunds and Jill A. Rupinski were honored for their achievements in the visual arts and were presented with Philadelphia Sketch Club Medals. The event included Hors d'oeuvres, beverages, a live auction of quality artworks, a silent auction and an audience of art notables. Much of the event was recorded by noted videographer Juan Gomez and we will be distributing the main video along with a narrative in the January *Portfolio*. Here is a link to the Trailer Video which you can view while awaiting the full video. [Watch the Trailer](#)

About the Sketch Club:

Founded in 1860, the Philadelphia Sketch Club (PSC) celebrated its 163rd Anniversary Gala in October 2023. As has been its practice for several years, the PSC honored three artists with the presentation of Philadelphia Sketch Club Medals in recognition of their creativity and achievements in the visual arts. The artists receiving medals are pictured below.



Honorees with Philadelphia Sketch Club Medals from left to right are Kyle Cassidy, Jill A. Rupinski and Allan L. Edmunds. (Photograph by Juan Gomez)

Bio information on this year's honored artists is provided below. Additional photos and narrative will be provided in the December *Portfolio*. A history of the medal and recipients is as follows:

The PSC Medal was sculpted by PSC member and PAFA graduate Joe Winter, who fashioned it after the PSC corporate seal. The corporate seal was originally designed in 1889 by Henry T. Cariss. Presentation of PSC medals to recognize the achievements of artists is evolving and is now an annual event tied to the PSC's fundraising gala.

Recipients of the Philadelphia Sketch Club Medal have included Tony Auth, Jan Baltzell, Robert Beck, Moe Brooker,

Diane Burko, Kyle Cassidy, Patrick Connors, Vincent Desiderio, Paul DuSold, Allan L. Edmunds, John Ennis, Cindi Ettinger, Alan Fetterman, Jane Golden, Eileen Goodman, Al Gury, Garth Herrick, Alex Kanevsky, Christine Lafuente, Elizabeth Osborne, Barbara Rosenfeld, Richard Rosenfeld, Jill A. Rupinski, Bill Scott, Zoe Strauss, James Toogood, Signe Wilkinson, Jamie Wyeth, Robert Venturi, Denise Scott Brown, Doris Brandes and Edmund Bacon.

Sketch Club Open Workshop

Open Studio Workshops

Our workshops provide a welcoming open studio environment where artists of all levels can gather to create, learn, and connect. Whether you're an experienced artist seeking to refine your techniques or a newcomer eager to explore your creative side, our workshops offer a space where you can draw and paint the human figure from a life model, nude and clothed. We offer a variety of sessions from short dynamic gestural poses to long classical poses, offering opportunities to fully explore the human form.



Our spacious studio space has been recently renovated. Newly installed gallery lighting--with ultraviolet filters to protect paintings--is ideal for working artists. The space is bathed in natural light.

Open Studio Schedule

Mondays: 6:30 PM - 9:30 PM Nude model, short and long poses Monitor: Bob Bohne	Tuesdays: 12:00 PM - 3:00 PM Nude model, long pose Monitor: Volunteer	Wednesdays: 6:30 PM - 9:30 PM Nude model, short and long poses Monitor: Andrew Goms	Thursdays: 12:00 PM - 3:00 PM Costumed model, long poses Monitor: Bob Bohne	Saturdays: 9:30 AM - 12:30 PM Nude model, gestural, short, and long poses Monitor: Tiger Jaser
---	--	--	--	---

No prior signup needed. Join any of our scheduled workshops and bring your own art supplies. We provide chairs, tables, and easels. All workshops are held in the Sketch Club's upstairs gallery and are open to the public and run weekly, excluding holidays and inclement weather. The schedule above is accurate as of 2023, cancellations will be posted to the front page of Sketchclub.org, and timely notifications will be sent to the workshop mailing list. Join our workshops mailing list to stay informed of the latest workshop activities, schedule updates, and learn about upcoming sessions.

Sketch Club Open Workshop

Fees

\$9 for members ([become member](#))

\$10 for non-members

\$6 for full-time students (student ID required)

- Our workshops are open to individuals at any skill level
- You do NOT have to be a member of the Philadelphia Sketch Club to participate in the workshops.
- You must bring your own supplies. Easels, tables and seating are provided
- Only odorless terpenoid or similar solvent permitted, and you must take it with you The PSC does not have facilities for disposal of solvents
- A small number of electrical outlets are available for digital device users
- Workshop attendees have the opportunity to exhibit their work at [The annual Workshop Show](#)

Watch for emails or visit <https://sketchclub.org/workshops/> for more details on the still life workshop and holiday cancellations.

All workshops are open to the public. There is no need to register before attending. You do NOT have to be a member of the Philadelphia Sketch Club to participate in the workshops. Our workshops are open to anyone who is interested in drawing, painting, or printmaking. All skill levels are welcome.

Please Note: Those who use oil paints should bring their own container(s) to remove used solvents.

Odorless solvents only. See more important

attendee information at: [Workshop](#)

[Attendee Responsibilities](#)

Thank you to all the PSC members who donated their time and expertise to make these workshops available to PSC members and the Philadelphia art community.

Our monitors are all volunteers. If you're interested in volunteering, please contact us at workshops@sketchclub.org. If you're interested in modeling for any of our workshops, [sign up here](#)



Sketch Club Open Workshop

Workshop Guidelines

- Please arrive early to find an optimal spot to work in and not disrupt the session during workshop time.
- Fees will be collected by the monitors after the first twenty minutes. Please have cash on hand. Tipping the models is highly encouraged.
- When setting up, please give space for others behind or in front of you. Make sure those in back can see the model.
- Please make every effort to wipe down your easel when leaving and make sure around your easel is clear of charcoal or pastel dust.
- Please observe the easel arrangement in the storage closet and replace your easel in the same manner.
- Please do not use turpentine for oils and bring your own container to dispose of used minerals safely. We ask that you use odorless thinner.
- Please do all aerosol spraying outdoors, front or back yard.
- If there is a need to adjust the pose, please inform the monitor directly, instead of the model.
- Taking pictures of the models is not allowed, unless explicitly permission is granted by the model.
- Anyone who needs a locker or has fees for a locker should contact the office at 215-545-9298 or workshops@sketchclub.org.
- Attendees under 18 require permission slip from legal guardian.
- We always appreciate your feedback.

Let us know if you have any [suggestions or feedback](#)

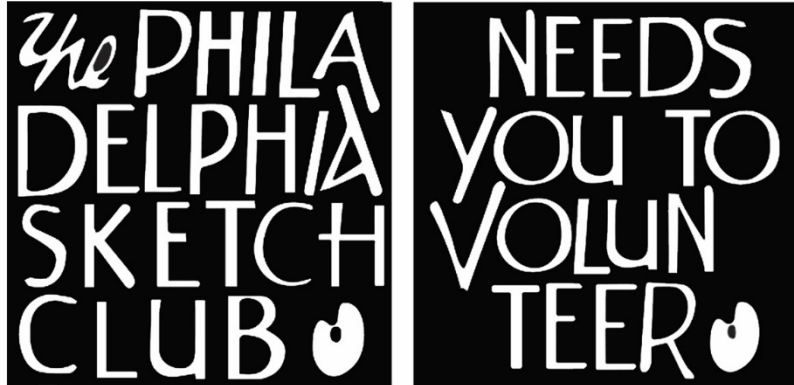
Gallery hours: By appointment: Wednesday, Friday, Saturday: 1 PM to 5 PM

January 2024

Volunteer

Be an Active Sketch Club Member; Volunteer!!

The Philadelphia Sketch Club is managed entirely by volunteers except for the gallery manager, housekeeping, and bookkeeper.



The PSC always needs volunteer members. Volunteering is one of the most important aspects of being a Sketch Club member and it is the one of the best ways to take advantage of the PSC. You'll be working with colleagues who share the same interests and helping the PSC provide unique services to the visual arts community. Sign up for an activity today.

To get involved, contact us at: info@sketchclub.org

Volunteer: The PSC needs a Chairperson to organize and manage upcoming Sketchclub Exhibitions. Contact our PSC Gallery Manager Josie Rowley Gallery Manager at gallerymanager@sketchclub.org for details if you are interested.

Volunteers Needed for Gallery Sitting:

Please contact the office gallerymanager@sketchclub.org, or call the office 215-545-9298 Wednesdays and Fridays 11-5pm. Your assistance would be greatly appreciated.

For more information, please contact our Gallery Manager, Josie Rowley at: gallerymanager@sketchclub.org

Sketch Club Critique Group

The Sketch Club Critique FaceBook Group

Join the Critique Facebook Group

Join your Club colleagues online at the "Philadelphia Sketch Club Critique"-- a Private group for Active PSC members only on Facebook.



Colleagues, please join in and contribute to your online art community. We all miss the camaraderie we enjoy at the Club house. The "Philadelphia Sketch Club Critique" is a chance to get together online until we can gather once more around the punch bowl and raise a toast, "to the Sketch Club, past, present and future."

Here's how it works:

- Active members go to the new "Philadelphia Sketch Club Critique" page and request access, which is available to all Club members in good standing.
- Once in post your work and watch as other members' post their artwork for critique.
- More details will be posted within the group including the option to be considered for a monthly "Highlights", a curated online gallery to be published on our external site/Instagram/Twitter channels.

This Facebook Group is private; this means that as Members submit their work others are invited to critique each other in a professional and respectful way.

Critique Group Links:

- You can find a link on the Sketch Club website: <https://sketchclub.org/>
- The Critique Group's Facebook Page: <https://www.facebook.com/groups/PSCCritique>
- The PSC's main FaceBook page: <https://www.facebook.com/thesketchclub>

Sketch Club Critique Group

Artificial Intelligence (AI) Image Generation Tools – by Don Gauger

New tools are being offered almost daily using AI engines. First is the generative quality of AI. A creator crafts a text inquiry and the AI engine generates variations. Just like getting good search query results requires a well crafted text query, the quality of the output image depends on the skill in writing a good description. As for design, the quality of the imagination of the creator, and how successfully they describe it, will make a huge difference in the quality of the final design's impact.

It is possible that AI image generation will pass through a phase much like photography did, where classic artists disparaged photos as not really being art. Most artists now recognize true artistry in the best photography.

Perhaps AI generated images will become another artist's tool. Digital artists might use an AI generated image as a starting point, then layer their own work on top of it. Only time will tell.

Here are two examples of AI generated images using a text-to-image engine.

The first was created using the OpenAI DALL-E 2 tool found at <https://labs.openai.com>. The second was using the Adobe Creative Cloud Betta text-to-image engine

As you can see from these examples, the AI engines respond differently, and the types of images create vary a great deal.



OpenAI DALL-E 2 tool: "Santa posing for a crowd of artists painting at their easels with Philadelphia city hall in the background and light snow flurries and Christmas lights"



Adobe Creative Cloud Betta: "Santa posing for a crowd of artists painting at their easels with Philadelphia city hall in the background and light snow flurries and Christmas lights"

Sketch Club Critique Group

Art related Internet News Articles

National Geographic Article: These 18 Autochrome Photos Will Transport you to Another Era: The method used to make these dreamy photographs resulted in a painting-like quality that not even today's best Instagram filters can replicate. <https://www.nationalgeographic.com/history/article/autochrome-photography-archive-vintage-history><https://thehustle.co/can-you-get-sued-for-using-a-meme/>

From the Hustle: Can you get sued for using a meme? <https://thehustle.co/can-you-get-sued-for-using-a-meme/>

New venture: Christie's, the prominent auction house, announced it's launched an in-house VC arm called Christie's Ventures, which will focus on art and crypto startups.

https://www.wsj.com/articles/christies-venture-capital-nft-11657916141?st=lzm39fmeqhkiwu4&reflink=desktopwebshare_permalink

Can a corporation "own" a color?

<https://thehustle.co/can-a-corporation-trademark-a-color/>

A Humorous take on Art: The Blanton Museum of Art in Austin, Texas, challenged bakers to recreate any of its 21k works of art as cake. See the entries here.

<https://www.smithsonianmag.com/arts-culture/this-museum-is-asking-people-to-remake-famous-artworks-with-cake-180980152/?>

<https://www.instagram.com/explore/tags/blantonbakeoff/>

Philly Mural Arts program: Philly has more than 4,000 murals—and counting

<https://www.nationalgeographic.com/travel/article/this-city-has-more-than-4000-murals?>

Women in the arts: The women who redefined color - BBC Culture

<https://www.bbc.com/culture/article/20220401-the-women-who-redefined-colour>

In Memorium: Highlights of the QEII portrait exhibit:

<https://news.artnet.com/art-world/30-portraits-of-queen-elizabeth-ii-332442>

Tax Info for Artists

Sketch Club members might be interested in this summary article with 2022 tax information for freelancers.

-- Submitted by Don Gauger

<https://blog.freelancersunion.org/2022/01/11/whats-new-for-freelancers-in-tax-year-2022/>

Gallery hours: By appointment: Wednesday, Friday, Saturday: 1 PM to 5 PM

January 2024

Main Gallery Events

Opening Reception: January 7, 2024

WORKS ON PAPER

In the Upstirs Gallery
1:00 - 3:00 PM

**the PHILA
DELPHIA
SKETCH
CLUB**

235 S. Camac St. Philadelphia PA 19107

[See the Online Gallery](#)

Gallery hours: By appointment: Wednesday, Friday, Saturday: 1 PM to 5 PM

January 2024

Main Gallery Events

Next in the Upstairs Gallery



2023 Juror's Choice, *Pinetopia* by Imani Metellus, Northeast HS

THE SCHOOL DISTRICTS OF PHILADELPHIA &
THE PHILADELPHIA SKETCH CLUB PRESENTS

THE 40TH ANNUAL HIGH SCHOOL ART SHOW

January 28 - February 18, 2024

Reception and Awards
February 18, 1-3 PM



Main Gallery Events

Announcing the 40th Annual 2024 School District of Philadelphia HS Art Show

Collaborating with the Philadelphia Sketch Club

In the Main gallery and the Stewart Gallery of the Club this year. (not virtual)

THE 2024 HIGH SCHOOL ART SHOW

DATES: Jan. 28, 2024 – February 18, 2024

DELIVERY AND HANGING BY INVITED HIGH SCHOOL ART TEACHERS:

- Wednesday, January 24, 2024 - 3:00 – 6:00 PM
- Thursday, January 25, 2024 - 3:00 – 6:00 PM
- Friday, January 26, 2024 - 3:00 – 6:00 PM

RECEPTION, AWARDS: Sunday, February 18, 2024, 1:00- 3:00 PM

TAKE DOWN: Sunday, February 18, 2024, 3:00- 5:00 PM

JUDGING FOR AWARDS: Friday, February 2, 2024, 11:00 AM-5:00 PM

JUDGES: Jym Paris, Education: PAFA & U of P graduate, Masters in Therapeutic Recreation

Collections: Martha Graham Dance Co., Gallery Inter-Art Brazil, Creative Theater, Princeton, NJ

Multimedia Artist: Performing in Theater with acting, directing, costume design, & set design and visually swinging from charcoal to dyes on silk- Paris, NYC, Philadelphia & New Jersey

Lucy Roehm, local Artist from Elkins Park. She does florals, seascapes & Landscapes- watercolor, acrylic, oil and colored pencil. She is represented by Moondance Farm Studio, Philadelphia, PA. & sells work in Chincoteague VA. Memberships- Philadelphia

Sketch Club, The Plastic Club, Eastern Shore Art League (VA) & The Worcester County Arts Council in Berlin, MD

Hello Members,

Once again it is time to start planning for the High School Art Show (2024). As usual, we will be asking our loyal generous members for tax deductible contributions for awards for the young artists' artwork. This year, because of Covid restrictions on the number of people in the Gallery at once, each donor will be permitted only one (\$25) award or at the most two awards.

Main Gallery Events

40th Annual 2024 School District of Philadelphia HS Art Show (cont'd)

This is because- the more prizes that are awarded more people must come to receive them, which makes too many people in the gallery at once. If we award only two to each teacher that is much better to manage during this time of limited amount in gatherings. If not enough are received more will be requested. If too many are received the extra can go for operating expenses. Please make your check out to

The "Philadelphia Sketch Club", with a note in the lower left corner, "HS Art Show Award", and mail or bring it to the PSC office, Josie Rowley, Gallery Manager. Her hours are Wed., and

Fri.11:00-5:00PM. Also, notify the amount of your award (s) to Dorothy Roschen, in person, by

Phone (215 848 3257), or email (droschen@me.com) . . Every donor is recognized on a posted complete awards list in the gallery, which is also in the catalogue.(Award amounts are not posted.)

THE CUT-OFF DATE FOR DONATING AWARDS Is Monday, January 22, 2024

The judges must have a full list of awards before judging.

Please mail \$25 award checks to Josie Rowley, Philadelphia Sketch Club, 235 S.

Camac St. Philadelphia, PA 19107, or phone the Club(215 545 9298- Wed,Fri.-11-5) and use a Credit Card or Pay Pal.

Director of Art Education, School District of Philadelphia, will send the call to entry letters to ALL School District High School Art Teachers (no charter schools). Usually, about 25-30 teachers respond and they bring and hang 5 labeled and matted pieces each from their classrooms.

Food donations for the reception (Feb. 18) will be asked for closer to that date.

The student work is not for sale, because they need the work for other exhibits and their portfolios to get into art colleges and universities.

Thank you, Members, for your wonderful support for this show. It would be absolutely impossible without you.

Sincerely,

Dorothy Roschen, Chair, 2024 HS Art Show, (215 848 3257), droschen@me.com,

Josie Rowley, PSC Gallery Manager, (215 545 9298)

Lynette Brown, Director of Visual Arts, Dance, and Theater School District of Philadelphia | Office of Creative Arts and Learning

Credits for the attachment image: Juror's Choice Award, PSC HS Art Show2023, Imani Metelius, Gr.11, "Pinetopia", Graphite, Northeast HS, Art Teacher, Marsha Rosenthal

Main Gallery Events

2024 Exhibiton Schedule*

[See the Schedule Online](#)

Works on Paper	1/7/24	1/22/24
High School Show	1/28/24	2/18/24
Art of the Flower Exhibition	3/3/24	3/24/24
Members Exhibition	4/7/24	4/22/24
Under/Grad Students Exhibition	5/5/24	5/20/24
Workshop Show	6/2/24	6/23/24
Abstract Exhibition	7/7/24	7/7/24
Photography Exhibition	8/4/24	8/19/24
Small Oils Exhibition	9/1/24	9/22/24
Phillustration	10/6/24	10/21/24
Works Under \$250 Exhibition	11/3/24	12/22/24

*Dates are subject to change.

Gallery hours: By appointment: Wednesday, Friday, Saturday: 1 PM to 5 PM

January 2024

Main Gallery Events

Gallery Hours: Wednesday, Friday, Saturday 1 to 5pm

[See the Sketch Club Open Gallery](https://sketchclub.org/exhibition-schedule-2023/)
<https://sketchclub.org/exhibition-schedule-2023/>
[Important Dates for all PSC Activities](#)

Stewart Gallery Events



**Exhibition space in
the Stewart Gallery
is available for PSC
Members!**

Reserve the gallery by
contacting our
Exhibition Coordinator:
exhibitions@sketchclub.org

The space is \$150 for a
month. Members can
show once in the Stewart
Gallery per year.

Visit the Sketch Club Online Gallery

Go to the Sketch Club's on-going open gallery to see recent updates with work by PSC members and friends:

<http://sketchclub.org/sketch-club-open-gallery/>.

Members and friends can submit up to 4 images. Send your submissions to:

portfolio@sketchclub.org.

Include for your work: Your name; Title; size; and medium.

For photos of yourself, include Who you are and a brief description of the image.

Gallery hours: By appointment: Wednesday, Friday, Saturday: 1 PM to 5 PM

January 2024

Stewart Gallery Events

[See the Sketch Club Open Gallery](https://sketchclub.org/exhibition-schedule-2023/)
<https://sketchclub.org/exhibition-schedule-2023/>
[Important Dates for all PSC Activities](#)

Members/Friends Alert

Sketch Club / Classical Arts Atelier Partnership



The Philadelphia Sketch Club has partnered with Classical Arts Atelier to offer classical drawing classes for teens and young adults on Wednesdays from 3:15-4:45 on an affordable, drop-in basis. Limited spots are available!

Learn drawing techniques used for hundreds of years and studied by artists such as Vincent Van Gogh and Pablo Picasso, beginners welcome! Visit Classical Arts Atelier www.caa-philly.com or to book a class click here <https://pocketsuite.io/link/classicalartsatelier>.

Have you moved? Changed your email? New phone number?

Don't miss any Sketch Club upcoming events, workshops, pr exhibitions. If you change your address, email, or phone number let us know so we can keep your contact information in our database current. You can contact the gallery manager at 215-545-9298 or email to:

<mailto:info@sketchclub.org>

Sketch Club On-Line Gallery: **Always Room for More Work!**

There's always room for more work: Submit Now!

The Sketch Club is hosting an on-going open gallery at: <http://sketchclub.org/sketch-club-open-gallery/>. This gallery is open to PSC members and non-members.

Submit up to 4 images of your work or of yourself working along with a very brief description to: portfolio@sketchclub.org.

Include for your work: Your name; Title; size; and medium.

For photos of yourself include who you are and a brief description of the image.

Members/Friends Alert

On-Line Resources

- The Sketch Club Critique Group: <https://www.facebook.com/groups/PSCCritique>
- The Sketch Club Open Gallery: <https://sketchclub.org/sketch-club-open-gallery/>
- The Sketch Club's web site: sketchclub.org
- Our Facebook page: <https://www.facebook.com/thesketchclub/>
- Instagram: <https://www.instagram.com/philadelphiasketch/>
- Twitter: <https://twitter.com/PhilaSketchClub>
- Members: Stay in touch with other PSC colleagues. For contact information, go to the members only page at: <http://sketchclub.org/members-only-2/>. See Stay in touch with current Sketch Club Members in the members section below for instructions.

Non-Sketch Club friends can find a listing of current members names and business websites if they have one at:

<http://sketchclub.org/sample-page/current-members-contact-list/>.

Gallery hours: By appointment: Wednesday, Friday, Saturday: 1 PM to 5 PM

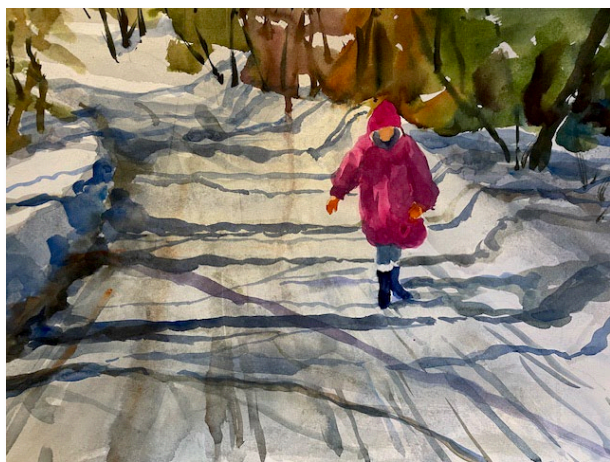
January 2024

Art Natters: Members News

Sketch Club member **Diane Hark** continues reaching out to all artists by offering zoom watercolor classes at a minimum charge as well as adding classes at OLLI. Theres classes include demonstrations on composing pictures and color evaluation.

For more information: DIANEHARKART@GMAIL.COM

Here are three examples of work that Diane shares with students.



Gallery hours: By appointment: Wednesday, Friday, Saturday: 1 PM to 5 PM

January 2024

Art Natters: Members News

Sketch Member **Nina Yocom** has several paintings on exhibit in the region.

Cheltenham Center for the Arts, Cheltenham, PA
83rd Annual Members Exhibition

Opening Reception: Sunday, January 7, 3-5 PM

January 7 - February 2

"Come Away With Me"

Da Vinci Art Alliance, Philadelphia, PA

"Inside Out, Upside Down, and Sideways"

Members Invitational Exhibition

Opening Reception: Sunday, February 3, 4-7 PM

Closing Reception and Artist Talk: Sunday,

February 18, 12-2 P

February 1 - 18

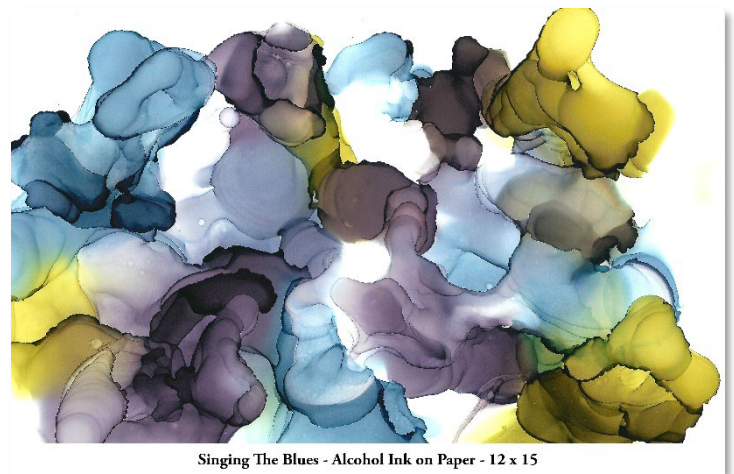
"Singing The Blues"

Malvern Retreat House, Malvern, PA

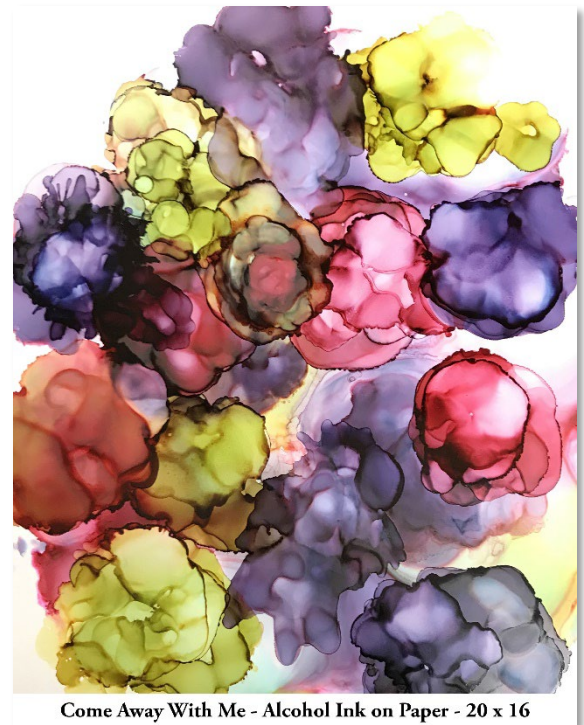
11th Annual Malvern Retreat House Art Show

January 31 - February 4

You can also see her work for sale at Muse Artisan Boutique in
Glenmoore, PA (Ludwig's Village).



Singing The Blues - Alcohol Ink on Paper - 12 x 15



Come Away With Me - Alcohol Ink on Paper - 20 x 16

Malvern Retreat House Invites You to the
2024 Art Show



Join Us and Meet the
Artists at our
**Complimentary Wine
and Cheese Reception**
on THURSDAY,
Feb. 1st from 4-8 pm,
Ample Parking.

**Wednesday, January 31- Sunday,
February 4, 2024**

Wednesday - Saturday 10 am to 7 pm

Sunday 10 am to 4 pm

www.malvernretreat.com

To learn more about Nina's work, visit:

<https://www.ninayocom.com/>

Gallery hours: By appointment: Wednesday, Friday, Saturday: 1 PM to 5 PM

January 2024

Art Natters: Members News

Sketch Club member **Nina Yocom**

www.ninayocom.com

West Chester, PA

(704) 564-0545



Undertow, 20 x 20, Alcohol Ink on Paper

Exhibit B Gallery

Annual Winter Group Show

Exhibition:

November 17, 2023 - January 27, 2024

Souderton, PA

<https://exhibitbgallery.com/>

Gallery hours: By appointment: Wednesday, Friday, Saturday: 1 PM to 5 PM

January 2024

Art Natters: Members News

Sketch Club member **Su Horthy**

THROUGH THE MIND'S EYE

November 10 - December 22, 2023

Featuring the work of seven artists working in various mediums to explore the realm of psychedelics and their emerging role in promoting mental health and wellness. As society delves deeper into the therapeutic potential of psychedelics, we invite you on a voyage within your own consciousness. From ethereal paintings to immersive video, this exhibition explores the connections between art and the human psyche, offering visitors a transformative journey of mental exploration and self-discovery.

Kim Brickley
Lori Evensen
Su Knoll Horthy
Diedra Krieger
Andrey Maximov
Jenn Rockwell
Justin Tyner
Kristen Weirman

Opening Reception:
Friday, November 10
6 - 9 p.m.

Chimaera Gallery
3502 Scotts Lane #2113
Philadelphia, PA 19129

Gallery hours by appointment
www.chimaeragallery.com
hello@chimaeragallery.com


GHIMAERA



Beautiful Transients 3, Oil & graphite on canvas, 30x30in.,
\$1,800.00

Artwork: Kim Brickley

THROUGH THE MIND'S EYE

November 10 - December 22, 2023

Kim Brickley
Lori Evensen
Su Knoll Horthy
Diedra Krieger
Andrey Maximov
Jenn Rockwell
Justin Tyner
Kristen Weirman


GHIMAERA



Beautiful Transients 1, Oil & graphite on canvas, 24x24in.,
\$1,250.00

Gallery hours: By appointment: Wednesday, Friday, Saturday: 1 PM to 5 PM

January 2024

Art Natters: Members News

From Sketch Club member **Nancy Herman**

THE NANCY HERMAN STUDIO GALLERY is showing gifts for children and adults for the holiday season.



Watercolors of animals on handmade paper with barn wood frames for the young ones.



Watercolors 28" x 28" for the older crowd

Gallery hours: By appointment: Wednesday, Friday, Saturday: 1 PM to 5 PM

January 2024

Art Natters: Members News

Sketch Club member **Alice Chung** has a Montgomery County Guild of Professional Artists group exhibition at The 431 Art Gallery in King of Prussia (Nov 17 - Jan17, 2024). She will be exhibiting 5 paintings.



IN THE MOMENT
November 17, 2023 - January 17, 2024



Alice Dustin



Maxine Sperling



Kathleen Spicer



Alice Chung



Barbara R. Mellin



Barbara Glickman



Pam McLean-Parker



Sharon Wensel



Sharon Steinhof



Candace Stoudt



Gail Morrison-Hall



Deborah Northey



John A. Benigno



Mildred Becker



Florence Weisz

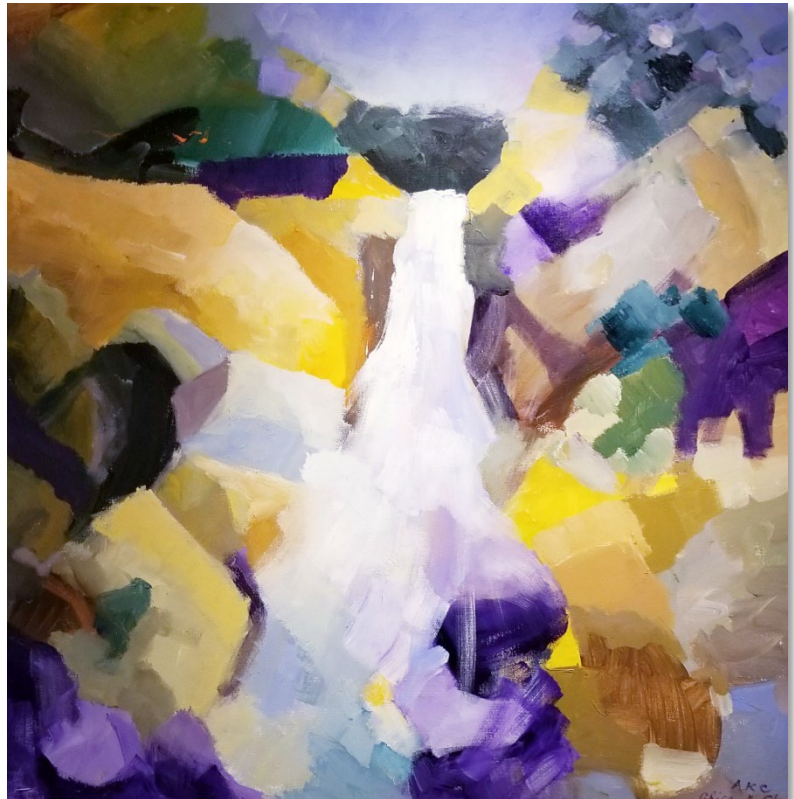


Linnie Greenberg



Elyne Rosenfeld

The 431 ART GALLERY
Upper Merion Community Center
431 West Valley Forge Road
King of Prussia, PA MCGOPA.ORG



Alice Chung - Yellowstone Park Acrylic: 30"X30"

Gallery hours: By appointment: Wednesday, Friday, Saturday: 1 PM to 5 PM

January 2024

Art Natters: Members News

Sketch Club member **Tracey Landmann** presents:
Magica Italia - Twelve scenes in various regions of Italy

Piccolina Toscana Italian restaurant
1412 N. Dupont St, Wilmington, DE

November 14-February 15

Reception: 5-8pm, Jan 5



"Gelato Wizard"



"Il Canale Piegato"

Art Natters: Members News

From Sketch Club member **Annette Alessi**

Check Out My Brand-NEW Website!

I am so excited to show you my [NEW website](#) so you can see my newest art, events coming up and more! If you sign up for my newsletter, you will automatically get an update on new art that is created when I add it to my site! You can also view the locations where you can find my works in person and read blogs about my artistic journey and stories about my painting creations. AND you can purchase my originals directly on my site! See the latest piece "Granogue Overlook", pastel, 10 x 16, (shown right). Even see it in a room! So enjoy browsing the site and please pass it on to someone whom you know loves art!



Granogue Overlook, pastel [Click here to purchase](#)

Art Natters: Members News

From Sketch Club member **Gail Ferretti**

Here is a great opportunity to hear world class musicians in person (Cherry Hill, with free parking), or streaming. For \$15. It's a great deal we want you to know about.

Please join us for the upcoming season of The Stella Schaevitz Concert Series. There will be beautiful music and interesting storytelling about the music and musicians! Our friends and fabulously talented musicians, Michael and Rachael Ludwig, have created this series calling upon super talents to teach and entertain us all.

Please save these dates if you can make them, and see the flyer attached for details. The Katz Jewish Community Center is selling tickets individually or in groups of 4 or 8:

Stella Schaevitz Concert Series - Katz JCC

Need assistance purchasing tickets? Contact Hanna DiMassimo at

hdimassimo@jfedsnj.org or
(856) 424-4444 x1706



THE STELLA SCHAEVITZ CONCERT SERIES

SPONSORED BY HOWARD & GAIL SCHAEVITZ
Founding Artistic Directors:
Michael Ludwig and Rachael Ludwig





Sunday, October 29, 2023, 3pm
SINATRA AND BEYOND
Singer/Pianist Tony DeSare



Sunday, November 26, 2023, 3pm
EXPLORING THE WORLD OF DANCE
Pianist Benjamin Loeb



Sunday, January 21, 2024, 3pm
AN AFTERNOON OF OPERA AND MUSICAL THEATER
Academy of Vocal Arts Resident Artists



Sunday, February 25, 2024, 3pm
CELEBRATING BLACK HISTORY MONTH
The Viano Quartet



Sunday, March 17, 2024, 11am
¡A BAILAR! LET'S DANCE! AN EDUCATION CONCERT
The Dalí Quartet



Sunday, April 14, 2024, 3pm
AN AFTERNOON OF QUARTET MUSIC
Andrés Cárdenes, John Koen, Anna Marie Ahn Petersen, Rachael Ludwig, Michael Ludwig



Sunday, May 19, 2024, 3pm
A MEETING OF TWO MUSICAL GIANTS: THE DAY BRAHMS VISITED LISZT
Pianist Adam Golka and Author/Composer Jan Swafford



Sunday, June 9, 2024, 3pm
THE GREAT AMERICAN SONGBOOK
Broadway Star Singers Ashley Brown and Ryan Silverman

Scan the QR code to purchase tickets:





Get your tickets today at
bit.ly/katzconcertseries
or by calling the Katz JCC 856-424-4444

For more information and tickets: <https://go.katzjcc.org/concert-series>

Gallery hours: By appointment: Wednesday, Friday, Saturday: 1 PM to 5 PM

January 2024

Art Natters: Members News

PSC Board Member **Joe Salgado** has had his work "Erith" accepted in the ArtsQuest/Banana Factory Arts Center Compendium: Small Works Juried Exhibition scheduled for October 28, 2023 through January 21, 2024 at the Banana Factory Arts Center in Downtown Bethlehem's Southside Historic District.

The Compendium exhibition is designed to highlight the thriving art > community of the Lehigh Valley and to showcase the array of artists who live there. The Compendium is juried by artist Nina Boodhansingh, a Lehigh Valley artist and co-partner of Midnight Gallery in Schnecksville, Pennsylvania.



"Erith" is a 12" W X 12" H acrylic painting on stretched canvas.
"Erith" is available for sale at \$ 150.
Compendium cash awards will be announced at Bethlehem's First Friday Banana Factory Compendium Opening on Friday, November 3, 2023.

Erith 12" W X 12" H acrylic painting on stretched canvas

Gallery hours: By appointment: Wednesday, Friday, Saturday: 1 PM to 5 PM

January 2024

Art Natters: Members News

Sketch Club member **Robert Beck's** painting *December Scallops* (24x30") has been selected by the American Society of Marine Artists for their 19th National Exhibition, at the Albany Institute of History and Art (Sept 8-Dec31), followed by the Minnesota Marine Art Museum, Winona (Jan 19-May 12, 2024).

Robert is a signature member of ASMA, and his work represented the organization in the first International Marine Art Exhibition in 2021-22. Robert Received the PSC Medal in 2014 and was featured in *It's Personal*, a solo exhibition at the Michener Museum in 2021.



December Scallops

Sketch Club member **Pat Wilson-Schmid** had four new paintings on display at the Off The Wall Gallery.

Off the Wall Gallery
4059 Skippack Pike
Skippack PA 19474
Phone # 610-222-2289.

The Gallery is open Wednesday through Sunday 10 AM to 5 PM.

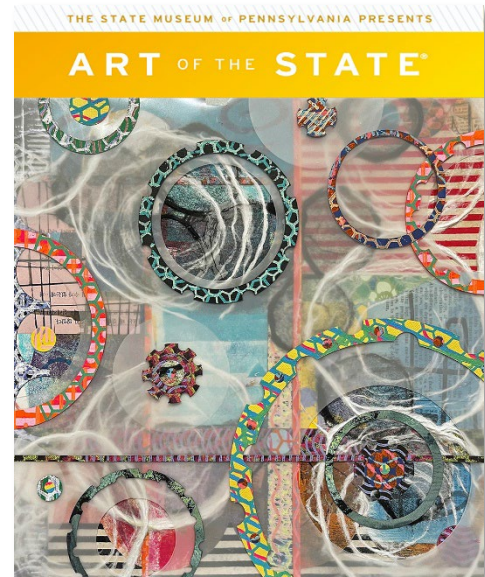
Art Natters: Members News

Here are some exhibitions that Sketch Club member **Robert Reinhardt** will be included in in the next few months.

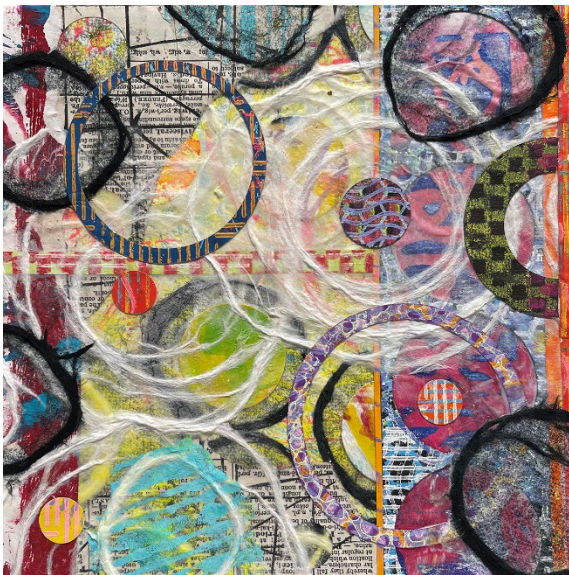
1. I am honored to receive the news that my work, "Portals #1" has been chosen to be exhibited in Art of the State 2023 at The State Museum of Pennsylvania. The work is a mono-print collage sized 12' x 12'. The show dates are September 10, 2023 - January 7, 2024.

2. One of my mono-print collages, "Storm in a Teacup" has been accepted into the Cerulean Arts 11th Annual Juried Exhibition. The show runs from June 21 - July 23, 2023.

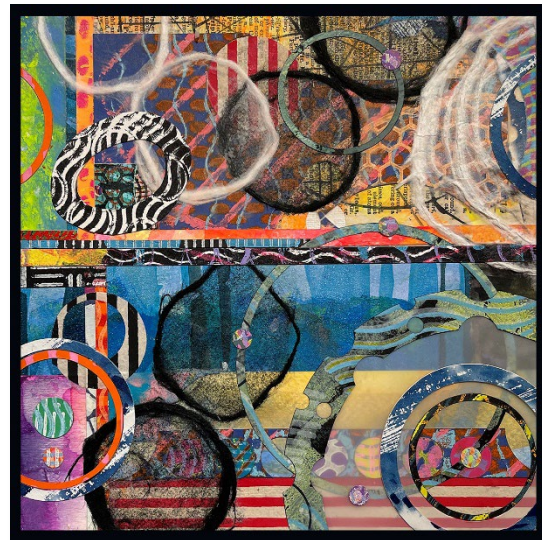
3. I am very pleased to have been accepted into The Abington Art Center's 2023 Summer Juried show. The show runs from June 9 - July 24. My accepted work is titled "Eye of the Hurricane" - a mono-print collage - 8" x 8". It's going to be a very busy summer!



Portals #1



Eye of the Hurricane



Storm in a Teacup

Gallery hours: By appointment: Wednesday, Friday, Saturday: 1 PM to 5 PM

January 2024

Art Natters: Members News

Sketch Club member and Sketch Club Critique Group Monitor **Don Gauger** won first place and a gallery show at the National Cryptologic Museum.

The National Cryptologic Museum had an unusual art contest: design original artwork that contained a hidden message "Knowledge is Power." Hiding messages in art is also known as Steganography.

Don's artwork, with solution, is on display for six months. The museum is located in Annapolis Junction, MD. Photos of the museum's grand reopening reception are posted https://www.graylandstudio.com/an-occasional-journal/blog_posts/an-unusual-exhibition-opens-at-the-ncm at: The solution will be posted in six months.



Steganographic artwork by Don Gauger, "KNOWLEDGE IS POWER"

Gallery hours: By appointment: Wednesday, Friday, Saturday: 1 PM to 5 PM

January 2024

Opportunities/Notices

As a courtesy to our non-PSC-member friends, in support of the Philadelphia artist community, we publish your notices, etc., free of charge. However, contributions to the PSC are always welcome. And we will gladly consider your application for membership

[Contribute to the Sketch Club Here](#) [Apply for PSC Membership Here](#)



Remembered Landscape



Happy winter holiday of
your heritage!!

Linda Dubin Garfield
printmaker/mixed media artist

www.lindadubingarfield.com

Opportunities/Notices

ACA | paper restoration

Art & Document Restoration


- Prints
- Paintings
- Drawings
- Posters

- Documents
- Maps
- Photographs
- Newspapers

(610) 225-3006

acapaperrestoration.com

Scan to
visit us online



Gallery hours: By appointment: Wednesday, Friday, Saturday: 1 PM to 5 PM

January 2024

Opportunities/Notices

From **Alphonse Lane**

Oil Paintings of Pears + Flower

<https://www.alphonselane.com/>



Perfect Pear, 24" X 24", Oil on Panel, \$9,750



The Great Fallen Bosc, 40" X 50" oil on Panel



Daphne, 40" X 40" Oil on Panel, 14,500
Daphne, 40" X 40" Oil on Panel, \$14,500



Pear, 14" X 11" Oil on Panel \$4000

Gallery hours: By appointment: Wednesday, Friday, Saturday: 1 PM to 5 PM

January 2024

Opportunities/Notices

Work by Pamela Scribner

1. Sail Boat in Ventno: colored pencil, L 24 1/2 x 20 1/2
2. Piazza in San Marco: Pen and Ink, 23 w x 24 L
3. Portland Maine: Colored Pencil 18 1/2 L x 26 W



Sailboat in Ventnor



Piazza in San Marco



Portland Maine

Membership

Stay in touch with current Sketch Club Members

Don't let sheltering in place prevent you from staying in touch with your Sketch Club friends and colleagues. Sketch Club members can access contact information for all current members. Go to the members only page at: <http://sketchclub.org/members-only-2/>. After you log-in with the password sent to you in your acceptance email you can click on the Membership Directory link to access members contact information. Non-Sketch Club friends can find a listing of current members along with their websites if they have one at: <http://sketchclub.org/sample-page/current-members-contact-list/>:

Not a PSC Member?: Join Now!

If you're reading this edition of the Portfolio and you're not a member of the PSC, you should consider joining the more than 200 other Philadelphia area artists who have. The PSC is one of the most active visual art venues serving center city Philadelphia. The PSC is a hands-on organization that offers its members the opportunity to participate in all aspects of creating and presenting work to the public. It presents over 20 scheduled group and solo exhibitions annually and offers a wide range of daily workshops. [Get info and an application here.](#)

If you are a member of the PSC, please feel free to share the Portfolio with your artist friends and encourage them to become members.

Membership Renewal

You can check the status of your membership by going to the Current Members page on the PSC web-site: <http://sketchclub.org/sample-page/memberspace/>. All current members are listed. An asterisk (*) means that the membership has expired but is within the 60-day grace period for renewal. Names in red are active links to the individual's web site.

Renew Now! <http://sketchclub.org/annual-dues-payment/>

If you have any questions about your membership, please don't hesitate to contact us at membership@sketchclub.org or call the office: 215-545-9298.

Support the Sketch Club

Contribute

Please consider making your tax-deductible contribution now. These funds will be put to good use providing enhanced services to our members and friends.

Membership dues cover only a small portion of the PSC's operating expenses. Competition for funding for arts organizations like the Sketch Club is increasingly competitive and total funding for the arts is shrinking. Your additional support will keep the PSC an active support for visual artists in the Metropolitan Philadelphia area. The Philadelphia Sketch Club is an IRS designated 501(c) (3) non-profit organization.

Gallery hours: By appointment: Wednesday, Friday, Saturday: 1 PM to 5 PM

January 2024

Support the Sketch Club

You can call the office at 215-545-9298, mail checks to the Sketch Club or visit the Contribute page of our website.

Visit our **Contribute** page of our website to give online at:

<http://sketchclub.org/support-us/>

You can also support the PSC on an ongoing basis when you shop on Amazon. Go to:

<http://smile.amazon.com/> and enter the Philadelphia Sketch Club in the Pick your own charitable organization box.

Your support makes it possible for the PSC to continue providing ongoing daily workshops and numerous annual gallery exhibitions.

Like, Link & Share

If you're not following the Philadelphia Sketch Club on Facebook re-tweeting Sketch Club tweets yet, it's time that you did. We have well over 2000 Facebook followers. Get the word out about the Sketch Club. Please click the like button and share your comments and invite your friends to like our page.

Follow @PhilaSketchClub on Twitter, we have almost 400 followers. Please click the heart button and re-tweet our announcements.

Include links on your website, blogs and social media to The Philadelphia Sketch Club to increase traction across social media platforms.

Follow us on Facebook, Twitter and Instagram now!



Classifieds



Your Ad Here... Have something to sell? Looking for something?

Contact portfolio@sketchclub to arrange for posting.



Gallery hours: By appointment: Wednesday, Friday, Saturday: 1 PM to 5 PM

January 2024

The Portfolio: The newsletter of the Philadelphia Sketch Club is published monthly. Editor, technical support, and webmaster: Ken Weiner. Send your member news, announcements and corrections to portfolio@sketchclub.org. The due date for all materials is one week before the end of the month.

Back issues of the Portfolio are available at: <http://sketchclub.org/portfolio-archive/>

Thanks to PSC member volunteer **Ken Weiner** for his ongoing support of Sketch Club technology and communications functions.

The Philadelphia Sketch Club

235 S Camac Street
Philadelphia, PA 19107
(215) 545-9298
<http://sketchclub.org/>
gallerymanager@sketchclub.org
info@sketchclub.org

Gallery Manager: Josie Rowley

Officers:

- President: Richard Harrington
- Vice President: Kenneth Weiner
- Secretary: Elise Anzini
- Treasurer: William Patterson

Board of Directors:

- John Attanasio
- Clayton Bright
- Melvin A. Chappell
- Renard Edwards
- Michael A. Fernandez
- Chris Fowler
- Stephen Iwanczuk
- Tiger Jaser
- Joe Salgado