

Gallery hours: By appointment: Wednesday, Friday, Saturday: 1 PM to 5 PM

February 2024

FEBRUARY 2024

SEASONAL SCULPTURES



SNOW MAN



DELIVERY MAN



GARBAGE MAN

HARRINGTON 02/24

Rich Harrington

This Month's Portfolio – (Click on the entry to view)

New Workshop Offerings	2
Sketch Club Open Workshop	3
Open Studio Schedule	3
Volunteer	6
Sketch Club Critique Group	7
Main Gallery Events	9
Stewart Gallery Events	14
Members/Friends Alert	15
Art Natters: Members News	17
Opportunities/Notices	28
Membership	33
Support the Sketch Club	33
Classifieds	34

Send your member news, announcements, and corrections to:
portfolio@sketchclub.org. The deadline for ALL submissions is
1-week before the end of the month.

Reminder: It's never too late. You can always renew
your membership

You may pay online at <http://sketchclub.org/annual-dues-payment/> or mail your check to:

The Philadelphia Sketch Club
235 S. Camac St.
Philadelphia, PA 19107

For questions please contact the Gallery Manager at
215-545-9298 or email:

gallerymanager@sketchclub.org

Late Breaking News – See items that were submitted
after the publication date. Go to:

<http://sketchclub.org/late-breaking-news/>

The PSC general email is: info@sketchclub

New Workshop Offerings

Workshop Update

We're thrilled to bring you some exciting updates to our weekly workshop schedules, offering even more opportunities for artistic exploration and collaboration with fellow creatives.

Meet Our New Workshop Monitor: PJ Smalley



I am a classically trained painter and draftsman who attended the University of Pennsylvania, Yale University School of Art, and PAFA's certificate program. I work at Penn, where I digitize art collections, rare books, and manuscripts for teaching, research, and exhibits. Life drawing, especially the short pose format, is a great way for us to stop overthinking and just go for it. Two or five minutes is not enough time but we will try anyway. That positive attitude can produce surprising results in and out of the studio.

Beginning February 4th PJ will be monitoring a the new Sunday evening workshop, 5:30 - 8:30 pm described below.



New Open Studio Session Added on Sundays: We are pleased to announce the addition of a new session to our Open Studio Workshops on Sundays from 5:30 pm to 8:30 pm. This session will primarily focus on short poses and will be monitored by our newest volunteer, PJ Smalley, providing a dynamic and engaging environment for artists looking to refine their skills in gesture and form. Visit the [Open Studio](#) page on our website for further details.



Historic Printmaking Studio Reopens with Guided Workshops on Saturdays: We are delighted to inform you that our historic printmaking studio is reopening its doors! We will be offering guided printmaking workshops every Saturday from 1:00 pm to 4:00 pm. Immerse yourself in the rich history and techniques of printmaking as our experienced instructor, Chloe Epstein, guides you through the process. This is a fantastic opportunity to explore a traditional and timeless art form within the heart of our beloved Philadelphia Sketch Club. Visit our printmaking workshop page to [sign up](#).



Introducing "Classical Drawing for Young Adults" on Wednesdays: Calling all aspiring young artists! We are introducing a brand-new class every Wednesday from 4:00 pm to 5:30 pm. Tailored to the unique needs and interests of young artists, our dedicated teacher, Stacy Ashton, will provide foundational drawing skills in a supportive and inspiring atmosphere. Encourage the young creatives in your life to join us as we nurture their passion for art and help them develop a strong artistic foundation. [Click here to register](#) for an upcoming class.

We believe these additions will enhance your artistic experience at the Philadelphia Sketch Club, offering a broader range of opportunities to explore and refine your skills. Whether you're a seasoned artist or just starting your creative journey, we invite you to join us for these exciting sessions.

Sketch Club Open Workshop


Open Studio Workshops

Our workshops provide a welcoming open studio environment where artists of all levels can gather to create, learn, and connect. Whether you're an experienced artist seeking to refine your techniques or a newcomer eager to explore your creative side, our workshops offer a space where you can draw and paint the human figure from a life model, nude and clothed. We offer a variety of sessions from short dynamic gestural poses to long classical poses, offering opportunities to fully explore the human form.



Our spacious studio space has been recently renovated. Newly installed gallery lighting--with ultraviolet filters to protect paintings--is ideal for working artists. The space is bathed in natural light.

Open Studio Schedule

					
Mondays:	Tuesdays:	Wednesdays:	Thursdays:	Saturdays:	Sundays
6:30 PM to 9:30 PM	12:00 PM to 3:00 PM	6:30 PM to 9:30 PM	12:00 PM to 3:00 PM	9:30 AM to 12:30 PM	5:30 PM to 8:30 PM
Nude model, short and long poses	Nude model, long pose	Nude model, short and long poses	Costumed model, long poses	Nude model, gestural, short, and long poses	Nude model, gestural, short Poses
Monitor: Bob Bohne	Monitor: Volunteer	Monitor: Andrew Goms	Monitor: Bob Bohne	Monitor: Tiger Jaser	Monitor: PJ Smalley

No prior signup needed. Join any of our scheduled workshops and bring your own art supplies. We provide chairs, tables, and easels. All workshops are held in the Sketch Club's upstairs gallery and are open to the public and run weekly, excluding holidays and inclement weather. The schedule above is accurate as of 2023, cancellations will be posted to the front page of Sketchclub.org, and timely notifications will be sent to the workshop mailing list. Join our workshops mailing list to stay informed of the latest workshop activities, schedule updates, and learn about upcoming sessions.

Sketch Club Open Workshop

Fees

\$9 for members

\$10 for non-members ([become a member](#))

\$6 for full-time students (student ID required)

- Our workshops are open to individuals at any skill level
- You do NOT have to be a member of the Philadelphia Sketch Club to participate in the workshops.
- You must bring your own supplies. Easels, tables and seating are provided
- Only odorless terpenoid or similar solvent permitted, and you must take it with you The PSC does not have facilities for disposal of solvents
- A small number of electrical outlets are available for digital device users
- Workshop attendees have the opportunity to exhibit their work at [The annual Workshop Show](#)

Watch for emails or visit <https://sketchclub.org/workshops/> for more details on the still life workshop and holiday cancellations.

All workshops are open to the public. There is no need to register before attending. You do NOT have to be a member of the Philadelphia Sketch Club to participate in the workshops. Our workshops are open to anyone who is interested in drawing, painting, or printmaking. All skill levels are welcome.

Please Note: Those who use oil paints should bring their own container(s) to remove used solvents. Odorless solvents only. See more important attendee information at: [Workshop Attendee Responsibilities](#)

Thank you to all the PSC members who donated their time and expertise to make these workshops available to PSC members and the Philadelphia art community.

Our monitors are all volunteers. If you're interested in volunteering, please contact us at workshops@sketchclub.org. If you're interested in modeling for any of our workshops, [sign up here](#)



Sketch Club Open Workshop

Responsibilities for Workshop Attendees

- During this period of returning to normal, we must remember to observe that some may choose to wear masks and to respect a 6-foot distance.
- Fees will be collected after the second pose. \$9 for non-members, \$8 for members, \$6 for full-time students.
- When setting up, please give space for others behind or in front of you. Make sure those in back can see the model.
- Please observe the easel arrangement in the storage closet and replace your easel in the same manner.
- Please make every effort to wipe down your easel when leaving and make sure around your easel is clear of charcoal or pastel dust.
- Please put back your easel if leaving early. Use the 10-minute rest to clean up.
- Please to not use turpentine for oils.
- Please do all aerosol spraying outdoors, in the front or back yard.
- If there is a change in the model's pose, please inform the monitor instead of the model.
- There will be two snacks available each week. The person who brought them will take these home, only coffee and tea will remain in the cabinet.
- Please try to come in early to find an optimal spot to work in, and also not to cause as much disturbance during workshop time.
- Anyone who needs a locker or has fees for a locker should talk to the monitor or gallery manager at 215-545-9298.
- Thank you for your efforts to make workshops as efficient and rewarding as possible!

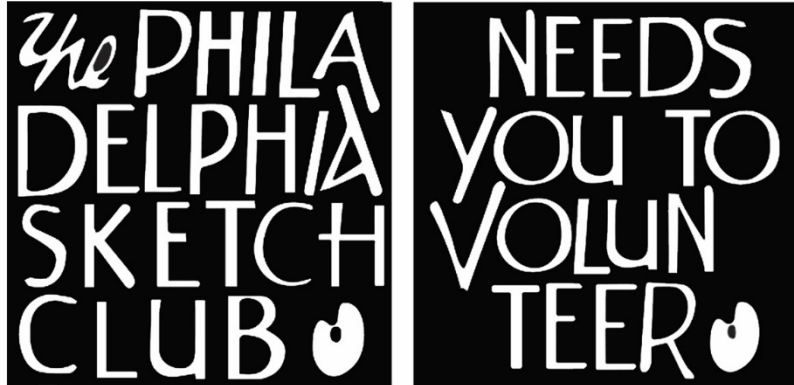
Gallery hours: By appointment: Wednesday, Friday, Saturday: 1 PM to 5 PM

February 2024

Volunteer

Be an Active Sketch Club Member; Volunteer!!

The Philadelphia Sketch Club is managed entirely by volunteers except for the gallery manager, housekeeping, and bookkeeper.



The PSC always needs volunteer members. Volunteering is one of the most important aspects of being a Sketch Club member and it is the one of the best ways to take advantage of the PSC. You'll be working with colleagues who share the same interests and helping the PSC provide unique services to the visual arts community. Sign up for an activity today.

To get involved, contact us at: info@sketchclub.org

Volunteer: The PSC needs a Chairperson to organize and manage upcoming Sketchclub Exhibitions. Contact our PSC Gallery Manager Josie Rowley Gallery Manager at gallerymanager@sketchclub.org for details if you are interested.

Volunteers Needed for Gallery Sitting:

Please contact the office gallerymanager@sketchclub.org, or call the office 215-545-9298 Wednesdays and Fridays 11-5pm. Your assistance would be greatly appreciated.

For more information, please contact our Gallery Manager, Josie Rowley at: gallerymanager@sketchclub.org

Sketch Club Critique Group

The Sketch Club Critique FaceBook Group

Join the Critique Facebook Group

Join your Club colleagues online at the "Philadelphia Sketch Club Critique"-- a Private group for Active PSC members only on Facebook.



Colleagues, please join in and contribute to your online art community. We all miss the camaraderie we enjoy at the Club house. The "Philadelphia Sketch Club Critique" is a chance to get together online until we can gather once more around the punch bowl and raise a toast, "to the Sketch Club, past, present and future."

Here's how it works:

- Active members go to the new "Philadelphia Sketch Club Critique" page and request access, which is available to all Club members in good standing.
- Once in post your work and watch as other members' post their artwork for critique.
- More details will be posted within the group including the option to be considered for a monthly "Highlights", a curated online gallery to be published on our external site/Instagram/Twitter channels.

This Facebook Group is private; this means that as Members submit their work others are invited to critique each other in a professional and respectful way.

Critique Group Links:

- You can find a link on the Sketch Club website: <https://sketchclub.org/>
- The Critique Group's Facebook Page: <https://www.facebook.com/groups/PSCCritique>
- The PSC's main FaceBook page: <https://www.facebook.com/thesketchclub>

Sketch Club Critique Group

Art related Internet News Articles

National Geographic Article: These 18 Autochrome Photos Will Transport you to Another Era: The method used to make these dreamy photographs resulted in a painting-like quality that not even today's best Instagram filters can replicate. <https://www.nationalgeographic.com/history/article/autochrome-photography-archive-vintage-history><https://thehustle.co/can-you-get-sued-for-using-a-meme/>

From the Hustle: Can you get sued for using a meme? <https://thehustle.co/can-you-get-sued-for-using-a-meme/>

New venture: Christie's, the prominent auction house, announced it's launched an in-house VC arm called Christie's Ventures, which will focus on art and crypto startups.

https://www.wsj.com/articles/christies-venture-capital-nft-11657916141?st=lzm39fmehqkiwu4&reflink=desktopwebshare_permalink

Can a corporation "own" a color?

<https://thehustle.co/can-a-corporation-trademark-a-color/>

A Humorous take on Art: The Blanton Museum of Art in Austin, Texas, challenged bakers to recreate any of its 21k works of art as cake. See the entries here.

<https://www.smithsonianmag.com/arts-culture/this-museum-is-asking-people-to-remake-famous-artworks-with-cake-180980152/?>

<https://www.instagram.com/explore/tags/blantonbakeoff/>

Philly Mural Arts program: Philly has more than 4,000 murals—and counting

<https://www.nationalgeographic.com/travel/article/this-city-has-more-than-4000-murals?>

Women in the arts: The women who redefined color - BBC Culture

<https://www.bbc.com/culture/article/20220401-the-women-who-redefined-colour>

In Memorium: Highlights of the QEII portrait exhibit:

<https://news.artnet.com/art-world/30-portraits-of-queen-elizabeth-ii-332442>

Tax Info for Artists

Sketch Club members might be interested in this summary article with 2022 tax information for freelancers.

-- Submitted by Don Gauger

<https://blog.freelancersunion.org/2022/01/11/whats-new-for-freelancers-in-tax-year-2022/>

Gallery hours: By appointment: Wednesday, Friday, Saturday: 1 PM to 5 PM

February 2024

Main Gallery Events

Now in the Upstairs Gallery



2023 Juror's Choice, *Pinetopia* by Imani Metellus, Northeast HS

THE SCHOOL DISTRICTS OF PHILADELPHIA &
THE PHILADELPHIA SKETCH CLUB PRESENTS

THE 40TH ANNUAL HIGH SCHOOL ART SHOW

January 28 - February 18, 2024

Reception and Awards
February 18, 1-3 PM



Main Gallery Events

Announcing the 40th Annual 2024 School District of Philadelphia HS Art Show

Collaborating with the Philadelphia Sketch Club

In the Main gallery and the Stewart Gallery of the Club this year. (not virtual)

THE 2024 HIGH SCHOOL ART SHOW

DATES: Jan. 28, 2024 – February 18, 2024

DELIVERY AND HANGING BY INVITED HIGH SCHOOL ART TEACHERS:

- Wednesday, January 24, 2024 - 3:00 – 6:00 PM
- Thursday, January 25, 2024 - 3:00 – 6:00 PM
- Friday, January 26, 2024 - 3:00 – 6:00 PM

RECEPTION, AWARDS: Sunday, February 18, 2024, 1:00- 3:00 PM

TAKE DOWN: Sunday, February 18, 2024, 3:00- 5:00 PM

JUDGING FOR AWARDS: Friday, February 2, 2024, 11:00 AM-5:00 PM

JUDGES: Jym Paris, Education: PAFA & U of P graduate, Masters in Therapeutic Recreation

Collections: Martha Graham Dance Co., Gallery Inter-Art Brazil, Creative Theater, Princeton, NJ

Multimedia Artist: Performing in Theater with acting, directing, costume design, & set design and visually swinging from charcoal to dyes on silk- Paris, NYC, Philadelphia & New Jersey

Lucy Roehm, local Artist from Elkins Park. She does florals, seascapes & Landscapes- watercolor, acrylic, oil and colored pencil. She is represented by Moondance Farm Studio, Philadelphia, PA. & sells work in Chincoteague VA. Memberships- Philadelphia

Sketch Club, The Plastic Club, Eastern Shore Art League (VA) & The Worcester County Arts Council in Berlin, MD

Hello Members,

Once again it is time to start planning for the High School Art Show (2024). As usual, we will be asking our loyal generous members for tax deductible contributions for awards for the young artists' artwork. This year, because of Covid restrictions on the number of people in the Gallery at once, each donor will be permitted only one (\$25) award or at the most two awards.

Main Gallery Events

40th Annual 2024 School District of Philadelphia HS Art Show (cont'd)

This is because- the more prizes that are awarded more people must come to receive them, which makes too many people in the gallery at once. If we award only two to each teacher that is much better to manage during this time of limited amount in gatherings. If not enough are received more will be requested. If too many are received the extra can go for operating expenses. Please make your check out to

The "Philadelphia Sketch Club", with a note in the lower left corner, "HS Art Show Award", and mail or bring it to the PSC office, Josie Rowley, Gallery Manager. Her hours are Wed., and

Fri.11:00-5:00PM. Also, notify the amount of your award (s) to Dorothy Roschen, in person, by

Phone (215 848 3257), or email (droschen@me.com) . . Every donor is recognized on a posted complete awards list in the gallery, which is also in the catalogue.(Award amounts are not posted.)

THE CUT-OFF DATE FOR DONATING AWARDS Is Monday, January 22, 2024

The judges must have a full list of awards before judging.

Please mail \$25 award checks to Josie Rowley, Philadelphia Sketch Club, 235 S.

Camac St. Philadelphia, PA 19107, or phone the Club(215 545 9298- Wed,Fri.-11-5) and use a Credit Card or Pay Pal.

Director of Art Education, School District of Philadelphia, will send the call to entry letters to ALL School District High School Art Teachers (no charter schools). Usually, about 25-30 teachers respond and they bring and hang 5 labeled and matted pieces each from their classrooms.

Food donations for the reception (Feb. 18) will be asked for closer to that date.

The student work is not for sale, because they need the work for other exhibits and their portfolios to get into art colleges and universities.

Thank you, Members, for your wonderful support for this show. It would be absolutely impossible without you.

Sincerely,

Dorothy Roschen, Chair, 2024 HS Art Show, (215 848 3257), droschen@me.com,

Josie Rowley, PSC Gallery Manager, (215 545 9298)

Lynette Brown, Director of Visual Arts, Dance, and Theater School District of Philadelphia | Office of Creative Arts and Learning

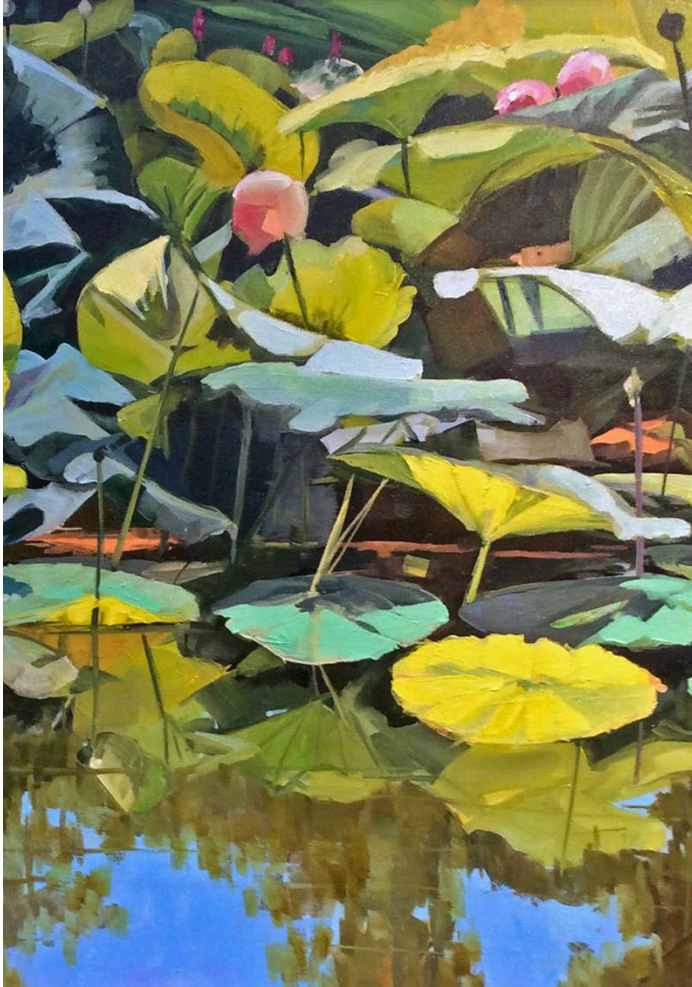
Credits for the attachment image: Juror's Choice Award, PSC HS Art Show2023, Imani Metelius, Gr.11, "Pinetopia", Graphite, Northeast HS, Art Teacher, Marsha Rosenthal

Gallery hours: By appointment: Wednesday, Friday, Saturday: 1 PM to 5 PM

February 2024

Main Gallery Events

Next in the Upstairs Gallery



Art of the Flower

March 3 through
March 24, 2024

Closing Reception

Sunday, March 24, 1-3 PM



235 S Camac Street, Philadelphia, PA.
View the gallery online:
www.sketchclub.org

2017 First Place
Reflections on Lotus, Elaine Lisle



Main Gallery Events

2024 Exhibiton Schedule*

[See the Schedule Online](#)

Works on Paper	1/7/24	1/22/24
High School Show	1/28/24	2/18/24
Art of the Flower Exhibition	3/3/24	3/24/24
Members Exhibition	4/7/24	4/22/24
Under/Grad Students Exhibition	5/5/24	5/20/24
Workshop Show	6/2/24	6/23/24
Abstract Exhibition	7/7/24	7/7/24
Photography Exhibition	8/4/24	8/19/24
Small Oils Exhibition	9/1/24	9/22/24
Phillustration	10/6/24	10/21/24
Works Under \$250 Exhibition	11/3/24	12/22/24

*Dates are subject to change.

Gallery hours: By appointment: Wednesday, Friday, Saturday: 1 PM to 5 PM

February 2024

Main Gallery Events

Gallery Hours: Wednesday, Friday, Saturday 1 to 5pm

[See the Sketch Club Open Gallery](https://sketchclub.org/exhibition-schedule-2023/)
<https://sketchclub.org/exhibition-schedule-2023/>
[Important Dates for all PSC Activities](#)

Stewart Gallery Events



Exhibition space in the Stewart Gallery is available for PSC Members!

Reserve the gallery by contacting our
Exhibition Coordinator:
exhibitions@sketchclub.org

The space is \$150 for a month. Members can show once in the Stewart Gallery per year.

Visit the Sketch Club Online Gallery

Go to the Sketch Club's on-going open gallery to see recent updates with work by PSC members and friends:

<http://sketchclub.org/sketch-club-open-gallery/>.

Members and friends can submit up to 4 images. Send your submissions to:

portfolio@sketchclub.org.

Include for your work: Your name; Title; size; and medium.

For photos of yourself, include Who you are and a brief description of the image.

Gallery hours: By appointment: Wednesday, Friday, Saturday: 1 PM to 5 PM

February 2024

Stewart Gallery Events

[See the Sketch Club Open Gallery](https://sketchclub.org/exhibition-schedule-2023/)
<https://sketchclub.org/exhibition-schedule-2023/>
[Important Dates for all PSC Activities](#)

Members/Friends Alert

Sketch Club / Classical Arts Atelier Partnership



The Philadelphia Sketch Club has partnered with Classical Arts Atelier to offer classical drawing classes for teens and young adults on Wednesdays from 3:15-4:45 on an affordable, drop-in basis. Limited spots are available!

Learn drawing techniques used for hundreds of years and studied by artists such as Vincent Van Gogh and Pablo Picasso, beginners welcome! Visit Classical Arts Atelier www.caa-philly.com or to book a class click here <https://pocketsuite.io/link/classicalartsatelier>.

Have you moved? Changed your email? New phone number?

Don't miss any Sketch Club upcoming events, workshops, pr exhibitions. If you change your address, email, or phone number let us know so we can keep your contact information in our database current. You can contact the gallery manager at 215-545-9298 or email to:

<mailto:info@sketchclub.org>

Sketch Club On-Line Gallery: **Always Room for More Work!**

There's always room for more work: Submit Now!

The Sketch Club is hosting an on-going open gallery at: <http://sketchclub.org/sketch-club-open-gallery/>. This gallery is open to PSC members and non-members.

Submit up to 4 images of your work or of yourself working along with a very brief description to: portfolio@sketchclub.org.

Include for your work: Your name; Title; size; and medium.

For photos of yourself include who you are and a brief description of the image.

Members/Friends Alert

On-Line Resources

- The Sketch Club Critique Group: <https://www.facebook.com/groups/PSCCritique>
- The Sketch Club Open Gallery: <https://sketchclub.org/sketch-club-open-gallery/>
- The Sketch Club's web site: sketchclub.org
- Our Facebook page: <https://www.facebook.com/thesketchclub/>
- Instagram: <https://www.instagram.com/philadelphiasketch/>
- Twitter: <https://twitter.com/PhilaSketchClub>
- Members: Stay in touch with other PSC colleagues. For contact information, go to the members only page at: <http://sketchclub.org/members-only-2/>. See Stay in touch with current Sketch Club Members in the members section below for instructions.

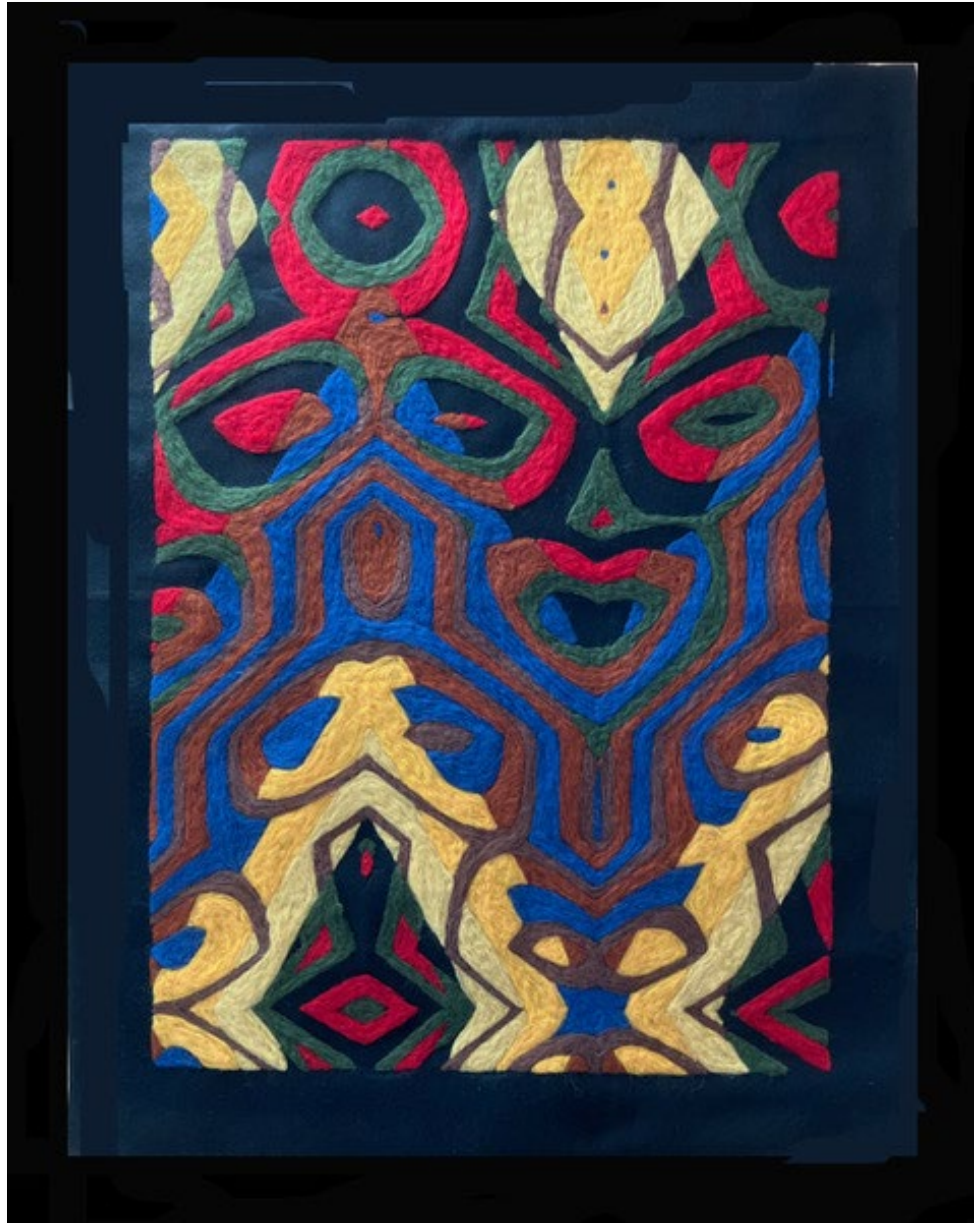
Non-Sketch Club friends can find a listing of current members names and business websites if they have one at:

<http://sketchclub.org/sample-page/current-members-contact-list/>.

Art Natters: Members News

From Sketch Club member **Nancy Herman**

Lots of new work at the NANCY HERMAN STUDIO GALLERY in Narberth, including this needle felted piece, TRAGIC COMEDY MASKS. 30" x 48"



Tragic Comedy Masks - 30" x 40"

Gallery hours: By appointment: Wednesday, Friday, Saturday: 1 PM to 5 PM

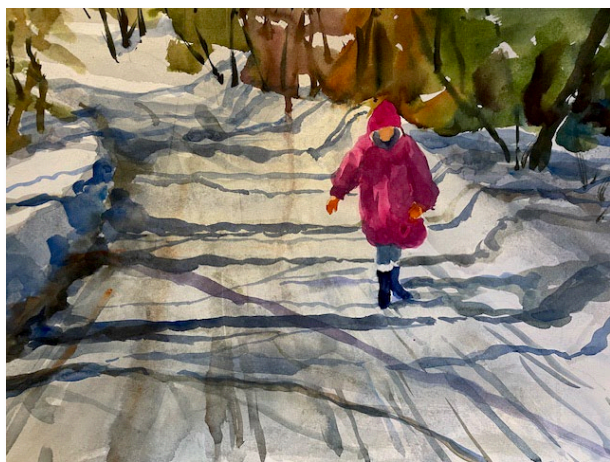
February 2024

Art Natters: Members News

Sketch Club member **Diane Hark** continues reaching out to all artists by offering zoom watercolor classes at a minimum charge as well as adding classes at OLLI. Theres classes include demonstrations on composing pictures and color evaluation.

For more information: DIANEHARKART@GMAIL.COM

Here are three examples of work that Diane shares with students.



Gallery hours: By appointment: Wednesday, Friday, Saturday: 1 PM to 5 PM

February 2024

Art Natters: Members News

Sketch Member **Nina Yocom** has several paintings on exhibit in the region.

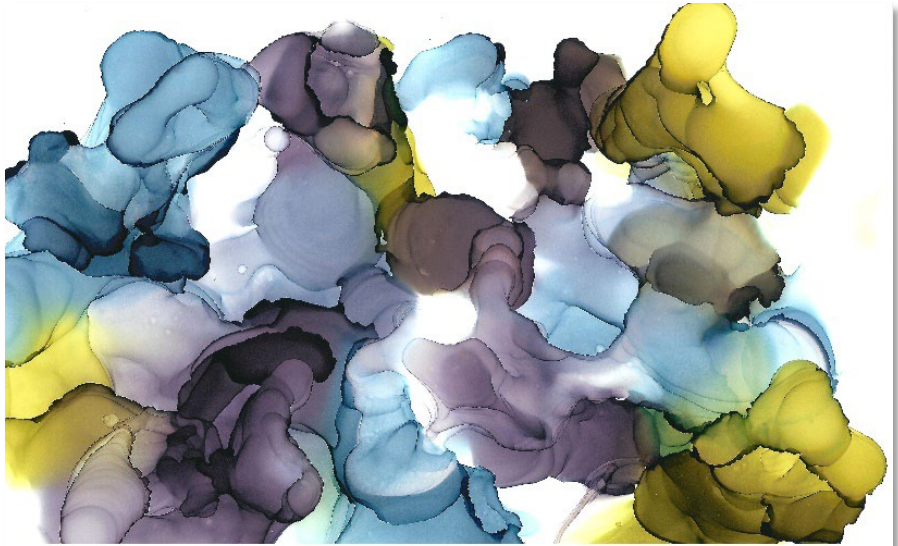
Da Vinci Art Alliance, Philadelphia, PA
"Inside Out, Upside Down, and
Sideways" Members Invitational
Exhibition

Opening Reception: Sunday, February
3, 4-7 PM

Closing Reception and Artist Talk:
Sunday, February 18, 12-2 PM
February 1 – 18

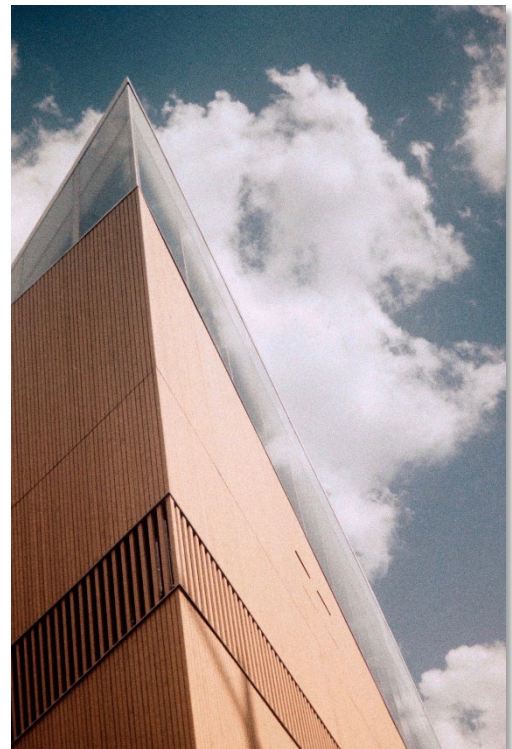
"Singing The Blues

To learn more about Nina's work,
visit: <https://www.ninayocom.com/>



Singing The Blues - Alcohol Ink on Paper - 12 x 15

Sketch Club board member **Chris Fowler's** photograph,
Bibliotek II, won third prize at the "Art of the Arts" show in the
d'Art Gallery in Norfolk, VA.



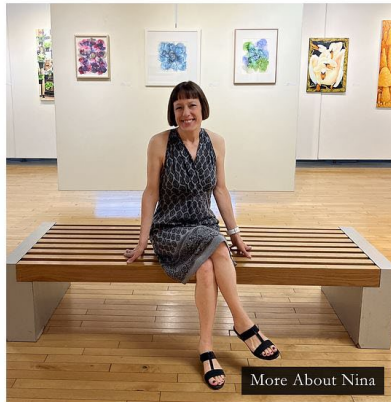
Bibliotik II

Art Natters: Members News

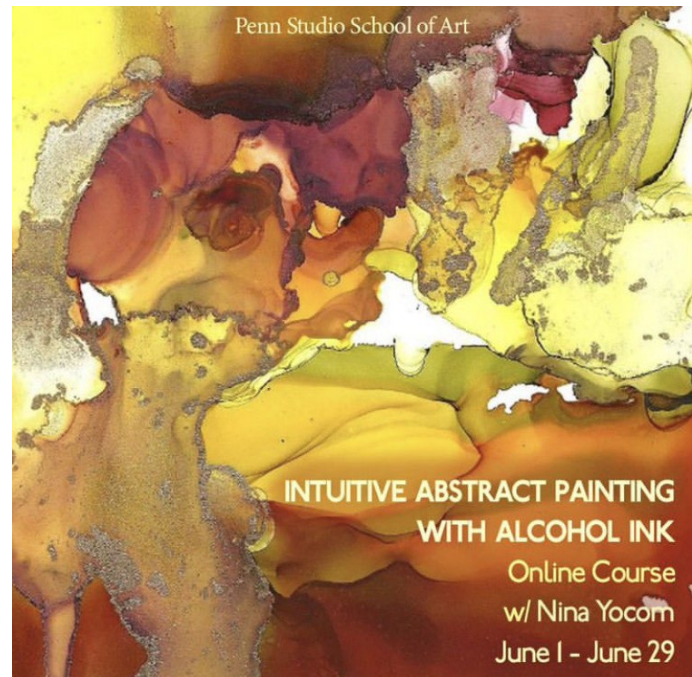
Sketch Club member:

NINA YOCOM FINE ART

HOME MALVERN RETREAT ART SHOW ARTWORK BIO CV EXHIBITIONS TESTIMONIALS
CLASSES AND DEMONSTRATIONS PRIVATE LESSONS COMMISSIONS VIDEOS CONTACT



Goggleworks Center for the Arts
15th Annual National Juried Exhibition



Please check out my new website!

I have been updating and reformatting my website and wanted to share it with you. I post upcoming and current Exhibitions, and you can also review sections such as Artwork, Testimonials and Videos. There is a new section Private Lessons where you can learn more about one-on-one lessons that I am now offering. Finally under Classes and Demonstrations you can see where I am teaching such as an online class "Intuitive Abstract Painting with Alcohol Ink" at the Penn Studio School of Art in June.

To learn more about Nina's work, visit: <https://www.ninayocom.com/>

www.ninayocom.com

West Chester, PA

(704) 564-0545

Gallery hours: By appointment: Wednesday, Friday, Saturday: 1 PM to 5 PM

February 2024

Art Natters: Members News

From Sketch Club member **Nancy Herman**

THE NANCY HERMAN STUDIO GALLERY is showing gifts for children and adults for the holiday season.



Watercolors of animals on handmade paper with barn wood frames for the young ones.



Watercolors 28" x 28" for the older crowd

Gallery hours: By appointment: Wednesday, Friday, Saturday: 1 PM to 5 PM

February 2024

Art Natters: Members News

Sketch Club member **Tracey Landmann** presents:
Magica Italia - Twelve scenes in various regions of Italy

Piccolina Toscana Italian restaurant
1412 N. Dupont St, Wilmington, DE

November 14-February 15

Reception: 5-8pm, Jan 5



"Gelato Wizard"



"Il Canale Piegato"

Art Natters: Members News

From Sketch Club member **Annette Alessi**

Check Out My Brand-NEW Website!

I am so excited to show you my [NEW website](#) so you can see my newest art, events coming up and more! If you sign up for my newsletter, you will automatically get an update on new art that is created when I add it to my site! You can also view the locations where you can find my works in person and read blogs about my artistic journey and stories about my painting creations. AND you can purchase my originals directly on my site! See the latest piece "Granogue Overlook", pastel, 10 x 16, (shown right). Even see it in a room! So enjoy browsing the site and please pass it on to someone whom you know loves art!



Granogue Overlook, pastel [Click here to purchase](#)

Art Natters: Members News

From Sketch Club member **Gail Ferretti**

Here is a great opportunity to hear world class musicians in person (Cherry Hill, with free parking), or streaming. For \$15. It's a great deal we want you to know about.

Please join us for the upcoming season of The Stella SchaevitZ Concert Series. There will be beautiful music and interesting storytelling about the music and musicians! Our friends and fabulously talented musicians, Michael and Rachael Ludwig, have created this series calling upon super talents to teach and entertain us all.

Please save these dates if you can make them, and see the flyer attached for details. The Katz Jewish Community Center is selling tickets individually or in groups of 4 or 8:

Stella SchaevitZ Concert Series - Katz JCC

Need assistance purchasing tickets? Contact Hanna DiMassimo at

hdimassimo@jfedsnj.org or
(856) 424-4444 x1706



THE STELLA SCHAEVITZ CONCERT SERIES

SPONSORED BY HOWARD & GAIL SCHAEVITZ
Founding Artistic Directors:
Michael Ludwig and Rachael Ludwig



**Scan the QR code to
purchase tickets:**












Sunday, October 29, 2023, 3pm
SINATRA AND BEYOND
Singer/Pianist Tony DeSare

Sunday, November 26, 2023, 3pm
EXPLORING THE WORLD OF DANCE
Pianist Benjamin Loeb

Sunday, January 21, 2024, 3pm
AN AFTERNOON OF OPERA AND MUSICAL THEATER
Academy of Vocal Arts Resident Artists

Sunday, February 25, 2024, 3pm
CELEBRATING BLACK HISTORY MONTH
The Viano Quartet

Sunday, March 17, 2024, 11am
¡A BAILAR! LET'S DANCE! AN EDUCATION CONCERT
The Dalí Quartet

Sunday, April 14, 2024, 3pm
AN AFTERNOON OF QUARTET MUSIC
Andrés Cárdenes, John Koen, Anna Marie Ahn Petersen, Rachael Ludwig, Michael Ludwig

Sunday, May 19, 2024, 3pm
A MEETING OF TWO MUSICAL GIANTS: THE DAY BRAHMS VISITED LISZT
Pianist Adam Golka and Author/Composer Jan Swafford

Sunday, June 9, 2024, 3pm
THE GREAT AMERICAN SONGBOOK
Broadway Star Singers Ashley Brown and Ryan Silverman

For more information and tickets: <https://go.katzjcc.org/concert-series>

The Philadelphia Sketch Club - 235 South Camac Street - Philadelphia PA 19107 - 215-545-9298 - www.sketchclub.org
A nonprofit organization under Chapter 501(c)(3) of the Internal Revenue Code.

Page 24

Gallery hours: By appointment: Wednesday, Friday, Saturday: 1 PM to 5 PM

February 2024

Art Natters: Members News

Sketch Club member **Robert Beck's** painting *December Scallops* (24x30") has been selected by the American Society of Marine Artists for their 19th National Exhibition, at the Albany Institute of History and Art (Sept 8-Dec31), followed by the Minnesota Marine Art Museum, Winona (Jan 19-May 12, 2024).

Robert is a signature member of ASMA, and his work represented the organization in the first International Marine Art Exhibition in 2021-22. Robert Received the PSC Medal in 2014 and was featured in *It's Personal*, a solo exhibition at the Michener Museum in 2021.



December Scallops

Sketch Club member **Pat Wilson-Schmid** had four new paintings on display at the Off The Wall Gallery.

Off the Wall Gallery
4059 Skippack Pike
Skippack PA 19474
Phone # 610-222-2289.

The Gallery is open Wednesday through Sunday 10 AM to 5 PM.

Gallery hours: By appointment: Wednesday, Friday, Saturday: 1 PM to 5 PM

February 2024

Art Natters: Members News

From **Pam Scribner**

Elfreth's Alley- Pen & Ink 25 x 21

Riverfront Renaissance Center for The Arts (Millville, NJ)
(Passages themed exhibit) \$400.



Elfreth's Alley- Pen & Ink 25 x 21

Bikini Surfer - Colored pencil
Makt Arts, Ventnor, NJ
12 1/2 x 15 1/2
\$85.



Bikini Surfer - Colored Pencil 12.5 x 15.5

Art Natters: Members News

Sketch Club member and Sketch Club Critique Group Monitor **Don Gauger** won first place and a gallery show at the National Cryptologic Museum.

The National Cryptologic Museum had an unusual art contest: design original artwork that contained a hidden message "Knowledge is Power." Hiding messages in art is also known as Steganography.

Don's artwork, with solution, is on display for six months. The museum is located in Annapolis Junction, MD. Photos of the museum's grand reopening reception are posted https://www.graylandstudio.com/an-occasional-journal/blog_posts/an-unusual-exhibition-opens-at-the-ncm at: The solution will be posted in six months.



Steganographic artwork by Don Gauger, "KNOWLEDGE IS POWER"

Opportunities/Notices

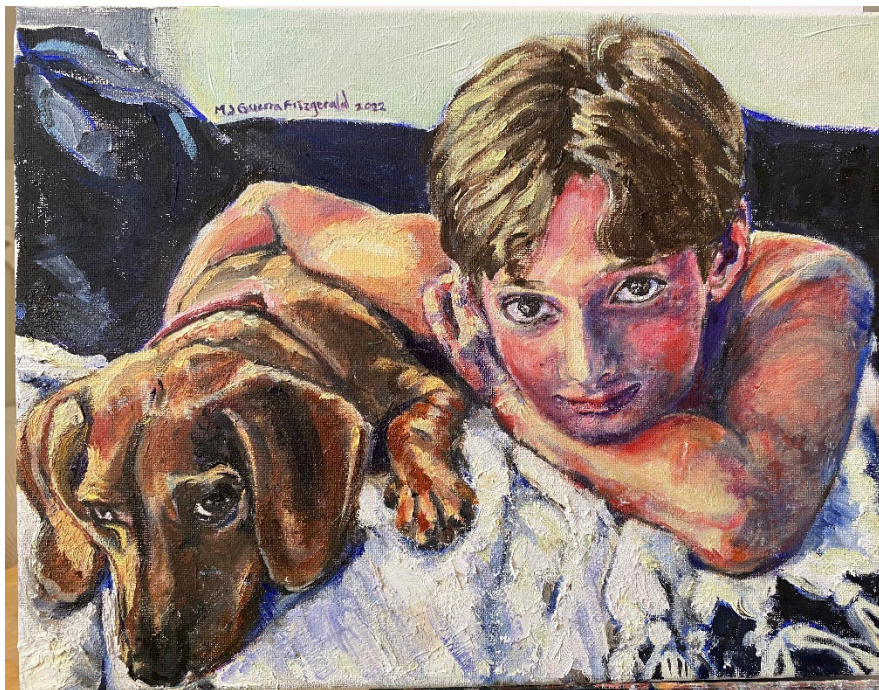
As a courtesy to our non-PSC-member friends, in support of the Philadelphia artist community, we publish your notices, etc., free of charge. However, contributions to the PSC are always welcome. And we will gladly consider your application for membership

[Contribute to the Sketch Club Here](#) [Apply for PSC Membership Here](#)

Maria Fitzgerald

My passion is to explore through portraiture the soul and beauty of each person. I use light, line, color, and texture to express myself on canvas.

The dog, Skye appears to be an extension of the little boy, Gabe. They both have the same expression in their eyes and you can feel the ease, affection, and connection between the two.



Gabe with Skye 11" x 14" oil on canvas

Gallery hours: By appointment: Wednesday, Friday, Saturday: 1 PM to 5 PM

February 2024

Opportunities/Notices

From Colleen Hammond

PECO Family Jams: The Community Collage Quilt Project

Sunday, February 11, 2024

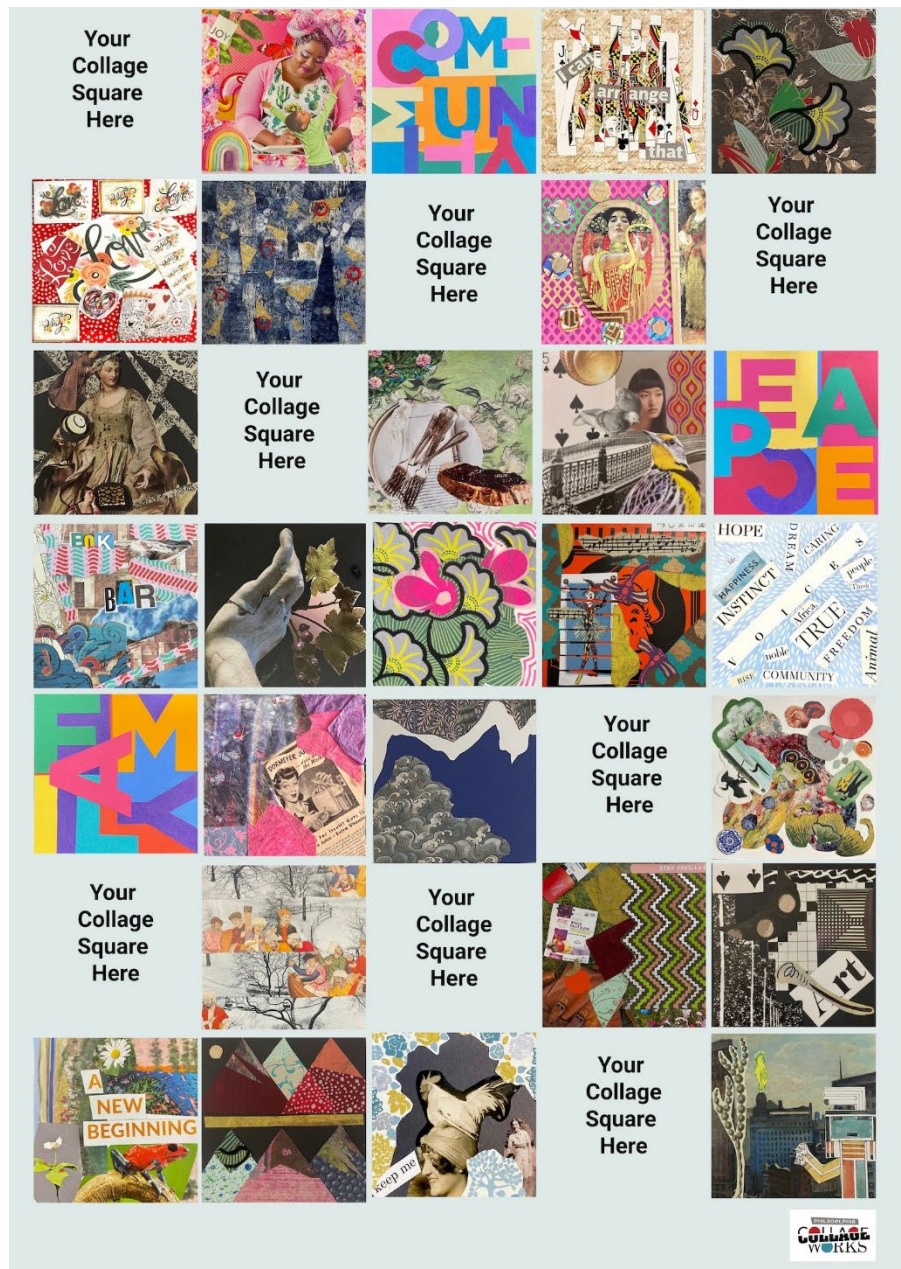
Event Time: 12:00 PM-to 4:00 PM

Location: 1020 South Street
Philadelphia, Pa 19147

Event Description

Isaiah Zagar, creator of Philadelphia's Magic Gardens, says he connects with people by making art with them. Philadelphia CollageWorks shares and explores this desire for connection through their Community Collage Quilt Project. They invite people across the city to make collage squares to add to their growing paper quilt. In the end, the quilt will be as colorful and unique as our city. Come make a collage and add your voice to this ongoing community project.

Plans are to exhibit the Community Collage Quilt later this year. Dates, Times, and Locations TBD.



Gallery hours: By appointment: Wednesday, Friday, Saturday: 1 PM to 5 PM

February 2024

Opportunities/Notices

From **John Ennis**



Covering Romance

**An Exhibition and Sale of
Romance Novel Cover Art
by John Ennis**

OPENING RECEPTION
Saturday | Feb 10 | 3-6PM

GALLERY HOURS
Sunday | Feb 11 | 12-5PM
and
Friday | Saturday | Sunday
Feb 16-18 | 12-5PM

AOY
ART CENTER

949 MIRROR LAKE ROAD | YARDLEY PA 19067 | AOYARTS.ORG

Gallery hours: By appointment: Wednesday, Friday, Saturday: 1 PM to 5 PM

February 2024

Opportunities/Notices

From **Alphonse Lane**

Oil Paintings of Pears + Flower

<https://www.alphonselane.com/>



Perfect Pear, 24" X 24", Oil on Panel, \$9,750



The Great Fallen Bosc, 40" X 50" oil on Panel



Daphne, 40" X 40" Oil on Panel, 14,500
Daphne, 40" X 40" Oil on Panel, \$14,500



Pear, 14" X 11" Oil on Panel \$4000

Opportunities/Notices

Work by **Pamela Scribner**

1. Sail Boat in Ventno: colored pencil, L 24 1/2 x 20 1/2
2. Piazza in San Marco: Pen and Ink, 23 w x 24 L
3. Portland Maine: Colored Pencil 18 1/2 L x 26 W



Sailboat in Ventnor



Piazza in San Marco



Portland Maine

Membership

Stay in touch with current Sketch Club Members

Don't let sheltering in place prevent you from staying in touch with your Sketch Club friends and colleagues. Sketch Club members can access contact information for all current members. Go to the members only page at: <http://sketchclub.org/members-only-2/>. After you log-in with the password sent to you in your acceptance email you can click on the Membership Directory link to access members contact information. Non-Sketch Club friends can find a listing of current members along with their websites if they have one at: <http://sketchclub.org/sample-page/current-members-contact-list/>:

Not a PSC Member?: Join Now!

If you're reading this edition of the Portfolio and you're not a member of the PSC, you should consider joining the more than 200 other Philadelphia area artists who have. The PSC is one of the most active visual art venues serving center city Philadelphia. The PSC is a hands-on organization that offers its members the opportunity to participate in all aspects of creating and presenting work to the public. It presents over 20 scheduled group and solo exhibitions annually and offers a wide range of daily workshops. [Get info and an application here.](#)

If you are a member of the PSC, please feel free to share the Portfolio with your artist friends and encourage them to become members.

Membership Renewal

You can check the status of your membership by going to the Current Members page on the PSC web-site: <http://sketchclub.org/sample-page/memberspace/>. All current members are listed. An asterisk (*) means that the membership has expired but is within the 60-day grace period for renewal. Names in red are active links to the individual's web site.

Renew Now! <http://sketchclub.org/annual-dues-payment/>

If you have any questions about your membership, please don't hesitate to contact us at membership@sketchclub.org or call the office: 215-545-9298.

Support the Sketch Club

Contribute

Please consider making your tax-deductible contribution now. These funds will be put to good use providing enhanced services to our members and friends.

Membership dues cover only a small portion of the PSC's operating expenses. Competition for funding for arts organizations like the Sketch Club is increasingly competitive and total funding for the arts is shrinking. Your additional support will keep the PSC an active support for visual artists in the Metropolitan Philadelphia area. The Philadelphia Sketch Club is an IRS designated 501(c) (3) non-profit organization.

Gallery hours: By appointment: Wednesday, Friday, Saturday: 1 PM to 5 PM

February 2024

Support the Sketch Club

You can call the office at 215-545-9298, mail checks to the Sketch Club or visit the Contribute page of our website.

Visit our **Contribute** page of our website to give online at:

<http://sketchclub.org/support-us/>

You can also support the PSC on an ongoing basis when you shop on Amazon. Go to:

<http://smile.amazon.com/> and enter the Philadelphia Sketch Club in the Pick your own charitable organization box.

Your support makes it possible for the PSC to continue providing ongoing daily workshops and numerous annual gallery exhibitions.

Like, Link & Share

If you're not following the Philadelphia Sketch Club on Facebook re-tweeting Sketch Club tweets yet, it's time that you did. We have well over 2000 Facebook followers. Get the word out about the Sketch Club. Please click the like button and share your comments and invite your friends to like our page.

Follow @PhilaSketchClub on Twitter, we have almost 400 followers. Please click the heart button and re-tweet our announcements.

Include links on your website, blogs and social media to The Philadelphia Sketch Club to increase traction across social media platforms.

Follow us on Facebook, Twitter and Instagram now!



Classifieds



Your Ad Here... Have something to sell? Looking for something?

Contact portfolio@sketchclub to arrange for posting.



Gallery hours: By appointment: Wednesday, Friday, Saturday: 1 PM to 5 PM

February 2024

The Portfolio: The newsletter of the Philadelphia Sketch Club is published monthly. Editor, technical support, and webmaster: Ken Weiner. Send your member news, announcements and corrections to portfolio@sketchclub.org. The due date for all materials is one week before the end of the month. Back issues of the Portfolio are available at: <http://sketchclub.org/portfolio-archive/>

Thanks to PSC member volunteer **Ken Weiner** for his ongoing support of Sketch Club technology and communications functions.

The Philadelphia Sketch Club

235 S Camac Street
Philadelphia, PA 19107
(215) 545-9298
<http://sketchclub.org/>
gallerymanager@sketchclub.org
info@sketchclub.org

Gallery Manager: Josie Rowley

Officers:

- President: Richard Harrington
- Vice President: Kenneth Weiner
- Secretary: Elise Anzini
- Treasurer: William Patterson

Board of Directors:

- John Attanasio
- Clayton Bright
- Melvin A. Chappell
- Renard Edwards
- Michael A. Fernandez
- Chris Fowler
- Stephen Iwanczuk
- Tiger Jaser
- Joe Salgado