



Rich Harrington

This Month's Portfolio – (Click on the entry to view)

Sketch Club Special Events	2
Sketch Club Workshops	3
Open Studio Schedule	6
Volunteer	8
Sketch Club Critique Group	9
Main Gallery Events	11
Stewart Gallery Events	13
Members/Friends Alert	14
Art Natters: Members News	15
Art Natters: Members News	17
Art Natters: Members News	18
Opportunities/Notices	19
Opportunities/Notices	20
Opportunities/Notices	21
Membership	22
Support the Sketch Club	22
Classifieds	23

Send your member news, announcements, and corrections to: portfolio@sketchclub.org. The deadline for ALL submissions is 1-week before the end of the month.

Reminder:

It's never too late to *renew your membership*.

Pay online at:

<http://sketchclub.org/annual-dues-payment/>

or mail your check to:

The Philadelphia Sketch Club
235 S. Camac St.
Philadelphia, PA 19107

For questions please contact:

the Gallery Manager at:
215-545-9298 or email:

gallerymanager@sketchclub.org

Late Breaking News – See items that were submitted after the publication date. Go to:

<http://sketchclub.org/late-breaking-news/>

The PSC general email is: [info@sketchclub](mailto:info@sketchclub.org)

Sketch Club Special Events

Coming Soon: **Watercolor for People Who Don't Know Where to Start**

Watch for news of an upcoming workshop class focused on learning about working with watercolors.

Have you ever wanted to try watercolor painting but didn't know where to start?

Watercolor painting can be rewarding and enjoyable, even if you're new to art or working in a new medium. A structured approach helps one dive into this medium without feeling overwhelmed.

Some thoughts about trying a new medium:

- **Embrace Mistakes:** Watercolor can be unpredictable; learn to adapt and enjoy unexpected results.
- **Experiment:** Don't hesitate to try new techniques, color combinations, and subjects.
- **Join our Community:** Consider joining our local art group to share your work and receive feedback.

Starting with watercolor can be both fun and therapeutic. By using the right materials, learning basic techniques, and engaging in practice projects, you'll build your skills and confidence over time. Enjoy the process and remember that everyone's artistic journey is unique.

Watch for details coming soon. Happy painting!



Watercolor Painting Illustration
Digital mixed media with AI elements
Don Gauger

Sketch Club Workshops

Holiday Printmaking Class December 10th 6:00 PM-9:00 PM:



Holiday Printmaking Class

Interested in making holiday cards for friends, family, and loved ones? Join us at the Philadelphia Sketch Club, America's oldest art club, for this special holiday printmaking workshop! Attendees will get to learn about relief printmaking, enjoy snacks and drinks, and create holiday cards in a unique print studio setting. All supplies included.

DATE & TIME

DECEMBER 10TH, 2025

6:00PM - 9:00PM

LOCATION

PHILADELPHIA SKETCH CLUB

235 S CAMAC ST.

PHILADELPHIA, PA 19107



ENTRY FEE

\$25 PER PERSON (MEMBERS)

\$30 PER PERSON (NON-MEMBERS)

Learn more at https://sketchclub.org/holiday_printmaking_workshop/

Sketch Club Workshops

**ON SATURDAYS FROM
1:30 TO 4:30 PM**

**STARTING
MAY 10**

**Start Here:
Figure
Drawing
Class and
Open
Studio**

This recurring workshop is designed to give artists the option for instructed or open studio figure drawing in a drop-in setting. No prior sign up needed.

Instructed price: \$25 members, \$30 non-members

Open Studio price: \$10 members, \$15 non-members, \$9 full-time students

Sketch Club Workshops

Start Here: Figure Drawing Class and Open Studio

The Philadelphia Sketch Club

Saturdays 1:30-4:30p

Since May 10th, 2025.

Instructed price: \$25 members, \$30 non-members

Open Studio price: \$10 members, \$15 non-members, \$9 full-time students

This recurring workshop is designed to give artists the option for either instructed or open studio (uninstructed) figure drawing in a drop-in setting. No prior sign up needed. Artists seeking instruction practice fundamental methods and techniques traditionally used for figure drawing. Discussion and demonstration includes basic anatomy, proportion, plum line, measuring, and drawing what we see versus drawing what we know. Open to all levels, this recurring weekly workshop is suited for those who have some experience drawing from direct observation and who wish to expand their technical capabilities through the beautiful complexity of the human body. Pose lengths will include a one hour long pose after several shorter poses. We're thrilled to bring you this exciting update to our weekly workshop schedule, offering even more opportunities for artistic exploration and collaboration with fellow creatives.

Join any of our workshops and bring your own supplies. We provide chairs, tables, and easels. All workshops are held in the Sketch Club's upstairs gallery and are open to the public and run weekly, excluding holidays and inclement weather. Cancellations will be posted to the front page of Sketchclub.org, and timely notifications will be sent to the workshop mailing list. Join our workshops mailing list to stay informed of the latest workshop activities, schedule updates, and learn about upcoming sessions.

Our workshops provide a welcoming open studio environment where artists of all levels can gather to create, learn, and connect. Whether you're an experienced artist seeking to refine your techniques or a newcomer eager to explore your creative side, our workshops offer a space where you can draw and paint the human figure from a life model, nude and clothed.

PJ Bio - I am a classically trained painter and draftsman who attended the University of Pennsylvania, Yale University School of Art, and PAFA's certificate program. I have about 1,400 sessions of experience drawing and painting the model in this type of setting. Life drawing is a great way for us to stop overthinking and practice being in the moment. At the Philadelphia Sketch Club, I serve on the board of directors and as co-chair of workshops. During the weekends, you can find me drawing or facilitating workshops and playing 8-ball on the club's magnificent 1880's Union League pool table.

Sketch Club Workshops

Open Studio Workshops

Our workshops provide a welcoming open studio environment where artists of all levels can gather to create, learn, and connect. Whether you're an experienced artist seeking to refine your techniques or a newcomer eager to explore your creative side, our workshops offer a space where you can draw and paint the human figure from a life model, nude and clothed. We offer a variety of sessions from short dynamic gestural poses to long classical poses, offering opportunities to fully explore the human form.

Our spacious studio space has been recently renovated. Newly installed gallery lighting--with ultraviolet filters to protect paintings--ideal for working artists. The space is bathed in natural light.



is

Mondays	Tuesdays	Wednesdays	Thursdays	Saturdays	Sundays
6:30 PM to 9:30 PM Nude model, short and long poses Monitor: Bob Bohne	12:00 PM to 3:00 PM Nude model, long pose Monitor: Volunteer	6:30 PM to 9:30 PM Nude model, short and long poses Monitor: Andrew Goms	12:00 PM to 3:00 PM Costumed model, long poses Monitor: Bob Bohne	9:30 AM to 12:30 PM Nude model, gestural, short, and long poses Monitor: Tiger Jaser 1:30 PM to 4:00 PM Figure Drawing Class & Open Studio	5:30 PM to 8:30 PM Nude model, gestural, short Poses Monitor: PJ Smalley

Open Studio Schedule

No prior signup needed. Join any of our scheduled workshops and bring your own art supplies. We provide chairs, tables, and easels. All workshops are held in the Sketch Club's upstairs gallery and are open to the public and run weekly, excluding holidays and inclement weather. The schedule above is accurate as of 2023, cancellations will be posted to the front page of Sketchclub.org, and timely notifications will be sent to the workshop mailing list. Join our workshops mailing list to stay informed of the latest workshop activities, schedule updates, and learn about upcoming sessions.

Sketch Club Workshops

Fees

\$10 for members

\$15 for non-members ([become a member](#))

\$9 for full-time students (student ID required)

- Our workshops are open to individuals at any skill level
- You do NOT have to be a member of the Philadelphia Sketch Club to participate in the workshops.
- You must bring your own supplies. Easels, tables and seating are provided
- Only odorless terpenoid or similar solvent permitted, and you must take it with you The PSC does not have facilities for disposal of solvents
- A small number of electrical outlets are available for digital device users
- Workshop attendees have the opportunity to exhibit their work at [The annual Workshop Show](#)

Watch for emails or visit <https://sketchclub.org/workshops/> for more details on the still life workshop and holiday cancellations.

All workshops are open to the public. There is no need to register before attending. You do NOT have to be a member of the Philadelphia Sketch Club to participate in the workshops. Our workshops are open to anyone who is interested in drawing, painting, or printmaking. All skill levels are welcome.

Please Note: Those who use oil paints should bring their own container(s) to remove used solvents. Odorless solvents only. See more important attendee information at: [Workshop Attendee Responsibilities](#)

Thank you to all the PSC members who donated their time and expertise to make these workshops available to PSC members and the Philadelphia art community.

Our monitors are all volunteers. If you're interested in volunteering, please contact us at workshops@sketchclub.org. If you're interested in modeling for any of our workshops, [sign up here](#)



Sketch Club Workshops

Responsibilities for Workshop Attendees

- During this period of returning to normal, we must remember to observe that some may choose to wear masks and to respect a 6-foot distance.
- When setting up, please give space for others behind or in front of you. Make sure those in back can see the model.
- Please observe the easel arrangement in the storage closet and replace your easel in the same manner.
- Please make every effort to wipe down your easel when leaving and make sure around your easel is clear of charcoal or pastel dust.
- Please put back your easel if leaving early. Use the 10-minute rest to clean up.
- Please do not use turpentine for oils.
- Please do all aerosol spraying outdoors, in the front or back yard.
- If there is a change in the model's pose, please inform the monitor instead of the model.
- There will be two snacks available each week. The person who brought them will take these home, only coffee and tea will remain in the cabinet.
- Please try to come in early to find an optimal spot to work in, and not to cause as much disturbance during workshop time.
- Anyone who needs a locker or has fees for a locker should talk to the monitor or gallery manager at 215-545-9298.
- Thank you for your efforts to make our workshops as efficient and rewarding as possible!

Volunteer

Be an Active Sketch Club Member; Volunteer!!

The Philadelphia Sketch Club is managed entirely by volunteers except for the gallery manager, housekeeping, and bookkeeper.

The PSC always needs volunteer members. Volunteering is one of the most important aspects of being a Sketch Club member and it is the one of the best ways to take advantage of the PSC. You'll be working with colleagues who share the same interests and helping the PSC provide unique services to the visual arts community. Sign up for an activity today.



To get involved, contact us at: info@sketchclub.org

Sketch Club Critique Group

The Sketch Club Critique FaceBook Group

Join the Critique Facebook Group

Join your Club colleagues online at the "Philadelphia Sketch Club Critique"-- a Private group for Active PSC members only on Facebook.



Colleagues, please join in and contribute to your online art community. We all miss the camaraderie we enjoy at the Club house. The "Philadelphia Sketch Club Critique" is a chance to get together online until we can gather once more around the punch bowl and raise a toast, "to the Sketch Club, past, present and future."

Here's how it works:

- Active members go to the new "Philadelphia Sketch Club Critique" page and request access, which is available to all Club members in good standing.
- Once in post your work and watch as other members' post their artwork for critique.
- More details will be posted within the group including the option to be considered for a monthly "Highlights", a curated online gallery to be published on our external site/Instagram/Twitter channels.

This Facebook Group is private; this means that as Members submit their work others are invited to critique each other in a professional and respectful way.

Critique Group Links:

- You can find a link on the Sketch Club website: <https://sketchclub.org/>
- The Critique Group's Facebook Page: <https://www.facebook.com/groups/PSCCritique>
- The PSC's main FaceBook page: <https://www.facebook.com/thesketchclub>

Sketch Club members: come post your work on our Facebook Critique group.

A suggestion, try posting your artwork to the online critique group a week or more before attending a critique at our Clubhouse. Get additional critique insights from our online-only Club members.

"A professional artist is one who submits their work for public critique, not the amount of money they earn from their artwork." -- Michael Kunceovich, late PSC member.

Sketch Club Critique Group

Fine Arts News Highlights — November 2025

Found online and curated by Sketch Club member Don Gauger.

Philadelphia Area

[ICA Philadelphia — Re*Membering Mavis Pusey \(Dec 5, 2025\)](#)

ICA Philadelphia holds December programming tied to the Mavis Pusey survey.

[Cantor Fitzgerald Gallery — Look Here \(through Dec 13, 2025\)](#)

Haverford College exhibition running through mid-December.

[Creative Philadelphia — Faces of Resilience & winter exhibitions](#)

City-wide art exhibitions continuing through December.

[Philadelphia Museum of Art — December Programs](#)

PMA lists December tours and exhibition programming.

United States (National)

[Getty Museum — 88,000 Artworks Now Free to Download and Use](#)

The Getty Museum announced that ~88,000 high-resolution images from its collection are now available for free under a Creative Commons Zero (CC0) license, meaning you can download, edit, reproduce, or remix them without restriction.

[Art Basel Miami Beach / Miami Art Week \(Dec 3–7, 2025\)](#)

Major U.S. contemporary fair week.

[MoMA — Ideas of Africa: Portraiture & Political Imagination \(opens Dec 14, 2025\)](#)

MoMA's major December exhibition opening.

[Whitney Museum — Sixties Surreal \(December programming\)](#)

Whitney's December programs and tours.

[Christie's — Winter Auctions \(Dec 2025\)](#)

Christie's December art sales and previews.

World

[36th Bienal de São Paulo \(through Jan 11, 2026\)](#)

International contemporary art exhibition active through December.

[Shanghai Biennale — Does the Flower Hear the Bee? \(runs into 2026\)](#)

Contemporary painting/installation biennial continuing in December.

[Centre Pompidou — Dessins sans limite \(opens Dec 16, 2025\)](#)

Major drawing/graphic arts exhibition opening mid-December.

[National Gallery \(London\) — Radical Harmony: Neo-Impressionists](#)

Painting exhibition with December programming

Main Gallery Events

2025 Exhibitions

January

Works on Paper

February

41st Annual High School Show

March

Art of the Flower

April

Members Exhibition

May

Workshop Show

June

New show! Coming soon

July

Absolutely Abstract

August

Photography

September

161st Small Oils Exhibition

October

Phillustration 16

November

Works Under 250

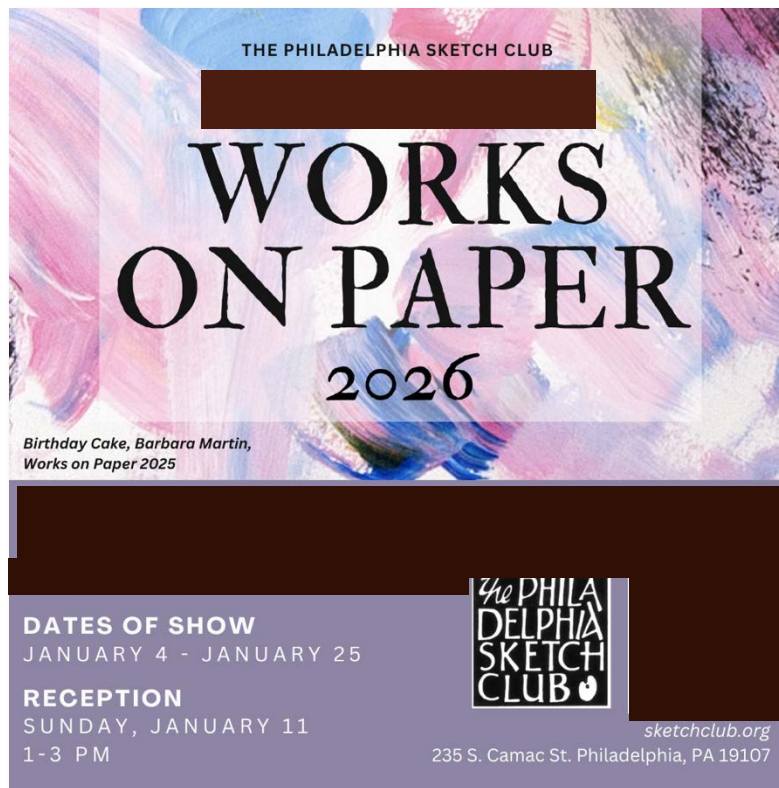
December

Works Under 250

Main Gallery Events

Call for Entries: Works on Paper 2026

Works on Paper 2026



Deadline for online submissions: 11:59 PM Friday, December 12th

[PROSPECTUS](#) | [ENTER ONLINE](#)

We are now accepting entries for our 2026 Works on Paper Exhibition! This is an open, juried show for works on paper. You may submit up to 10 works. Maximum accepted works per artist is 2. Please make sure all your information is accurate for each entry; your information will appear exactly as you enter it on all show materials.

All works MUST be framed and wired to hang. Works eligible include any 2-dimensional works on paper utilizing watercolor, oil, gouache, casein, acrylics, inks, printing, graphite, etching, charcoal, pastel, collage, pencil, mixed media, and others. Digital art is allowed, but not photography or digitally edited photographs.

For questions, email gallerymanager@sketchclub.org

Learn More about this exhibition by visiting [the Sketch Club website](#).

Stewart Gallery Events

This month in the Stewart Gallery

For the next two months, the Stewart Gallery is devoted to items to be part of the Live Auction at the 165th Anniversary Gala. Please see the notice above under **Sketch Club Special Events**.

Visit the Sketch Club Online Gallery

Go to the Sketch Club's on-going open gallery to see recent updates with work by PSC members and friends:

<https://sketchclub.org/sketch-club-open-gallery/>.

Members and friends can submit up to 4 images. Send your submissions to:

portfolio@sketchclub.org.

Include for your work: Your name; Title; size; and medium.

For photos of yourself, include Who you are and a brief description of the image.

[See the Sketch Club Open Gallery](https://sketchclub.org/sketch-club-open-gallery/)

Members/Friends Alert

Have you moved? Changed your email? New phone number?

Don't miss any Sketch Club upcoming events, workshops, or exhibitions. If you change your address, email, or phone number let us know so we can keep your contact information in our database current. You can contact the gallery manager at 215-545-9298 or email to:

<mailto:info@sketchclub.org>

Sketch Club On-Line Gallery: **Always Room for More Work!**

There's always room for more work: Submit Now!

The Sketch Club is hosting an on-going open gallery at: <http://sketchclub.org/sketch-club-open-gallery/>. This gallery is open to PSC members and non-members.

Submit up to 4 images of your work or of yourself working along with a very brief description to: portfolio@sketchclub.org.

Include for your work: Your name; Title; size; and medium.

For photos of yourself include who you are and a brief description of the image.

On-Line Resources

- The Sketch Club Critique Group: <https://www.facebook.com/groups/PSCCritique>
- The Sketch Club Open Gallery: <https://sketchclub.org/sketch-club-open-gallery/>
- The Sketch Club's web site: sketchclub.org
- Our Facebook page: <https://www.facebook.com/thesketchclub/>
- Instagram: <https://www.instagram.com/philadelphiasketch/>
- Twitter: <https://twitter.com/PhilaSketchClub>
- Members: Stay in touch with other PSC colleagues. For contact information, go to the members only page at: <http://sketchclub.org/members-only-2/>. See Stay in touch with current Sketch Club Members in the members section below for instructions.

Non-Sketch Club friends can find a listing of current members names and business websites if they have one at:

<http://sketchclub.org/sample-page/current-members-contact-list/>.

Art Natters: Members News

Mythic Gallery: Redefining Representation for Emerging Artists

I am sharing a glimpse of what we are building with Mythic Gallery. Our mission is simple: fair and equitable treatment for artists. We are bringing transparency into a traditionally opaque market and ensuring artists benefit from resale royalties, so their work continues to support them long after it leaves the studio. If you would like to learn more, you are always welcome to reach out to me at violet@mythicgallery.com.

This month I am highlighting Mythic artist Patrick Schmidt. His work layers, disrupts, and harmonizes digital and geometric forms. Patrick works with abstract shapes and color to confront a world that feels hard edged and overtly political. His network of color schemes suggests both disparity and connection. Transparent shapes create a place where traditional color theory ends and perception takes over. His practice draws from Op-art, hardedge abstraction, and the Pattern and Decoration movement while pushing all of it into a contemporary space.

There is one artist spot remaining at Mythic Gallery at this time. If Patrick's work resonates with you, or if you are an artist interested in learning more, I would love to talk. violet@mythicgallery.com

—Violet Alexandre
CEO & Founder, Mythic Gallery

www.mythicgallery.com



Feels so Good
Acrylic on canvas
32" X 32"



Above the Light
Acrylic on canvas
24 X 24"



Day Dreaming
Acrylic on canvas
14" X 17.5"

A free educational event:

A notice from Sketch Club member, Violet Alexandre, about an upcoming event that is free and educational. It is highly recommended to register. The link for registering is here:

<https://www.eventbrite.com/e/understanding-the-digital-art-market-tickets-1968313577897?aff=oddtcreator>

The poster features a black background with red and white circuit-like patterns on the right and bottom edges. In the top left, there is a logo for 'CITY ARTS SALON' consisting of three triangles (brown, red, black) and the text 'CITY ARTS SALON' below them. To the right of the logo is a location pin icon and the address: '5838 GERMANTOWN AVE. PHILADELPHIA, PA 19144' with 'ENTRANCE AND PARKING ON W. RITTENHOUSE ST.' below it. The main text in the center reads 'THE CITY ARTS SALON PRESENTS' followed by 'Understanding the Digital Art Market' and 'A Roundtable Discussion'. Below this, a red rounded rectangle contains the date and time: 'SATURDAY, DEC. 13TH, 2025' and '2:00 - 4:00PM'. Further down, it says 'WITH A PRESENTATION BY VIOLET ALEXANDRE CEO & FOUNDER MYTHIC GALLERY'. At the bottom center is the 'MYTHIC GALLERY' logo, and at the bottom right is a QR code.

Art Natters: Members News

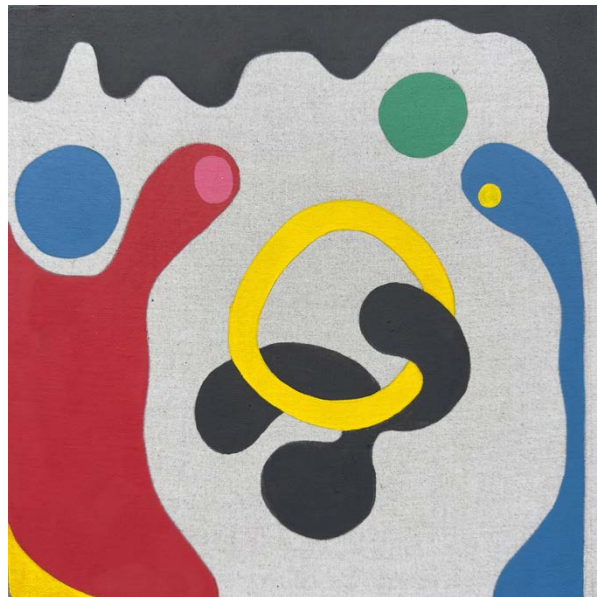
From Su Knoll Horty: The Fellowship of PAFA Annual Exhibition

Thank you to Box Spring Gallery owner, Gaby Heit, for jurying the Fellowship of PAFA Annual Exhibition.

I was happy to be included along with several very talented artists.

Thank you also to the organizers, Barbara Sosson and crew!

The exhibition will be hanging at Box Spring Gallery through December 13th.



A Little Fun on the Side 1
Oil and graphite on clear gessoed linen
10" X 10"

FELLOWSHIP 2025 ANNUAL EXHIBITION
EXHIBITION JURIED BY GABY HEIT
Exhibition Opening: November 13th, 6 to 9 p.m.
November 13 – December, 13, 2025
BOX SPRING GALLERY
1400 N. American Street, Philadelphia

Details of art by: Powers-Holt • Brockman • Maye Luga • Formicola

Su Knoll Horty

Abstract Artist

www.suknollhorty.com

Insta.: [su_knoll_horty](https://www.instagram.com/su_knoll_horty)

Subscribe: <https://suknollhorty.com/contact.html>

Art Natters: Members News

ART News from PSC Member Margaret Montgomery

Margaret Montgomery is participating in the following exhibition with the Pennsylvania Chapter of the National Association of Women Artists.

Light & Shadow

The inaugural exhibition of the Pennsylvania Chapter of the National Association of Women Artists.

Abington Art Center,
Kellner & Tile galleries,
515 Meetinghouse Rd, Jenkintown, PA.

November 6, 2025 - January 6, 2026.
Mon, 1 - 9pm; Tues - Thurs, 9am - 9pm;
Sat, 9am - 1pm. For holiday schedule:
215-887-4882.

Reception: November 6, 6 - 8pm.
Art Talk/Panel, November 19, 6 - 8pm.
Art Talk/Workshop: November 22, 10am.



Metamorphosis II
Elizabeth Myers Castonguay



Carpenter's Hall
Monica Jarold Hietsch



Shadows
Joan Appel

Opportunities/Notices

We're happy to share your news and announcements at no cost—it's our way of supporting Philadelphia's creative community. We always welcome contributions, and if you'd like to join us, we'd love to consider your membership application.

[Contribute to the Sketch Club Here](#) [Apply for PSC Membership Here](#)

ART News from Souls Shot Portraits

Follow the Portraits

Over the past year, our traveling exhibitions have brought hundreds of people together to witness stories of love, loss, and resilience through art. Every portrait we share reminds us why this work matters.

New Jersey Exhibition

Warden's House Gallery
150 High St, Mt Holly, NJ 08060
On view November 14 - January 24
Public viewing hours: Friday - Sunday, 11am-6pm

Philadelphia Exhibition Save the date!

Philadelphia 2026 Exhibition Premiere
Friday, January 16, 7–9pm
Presbyterian Church of Chestnut Hill
8855 Germantown Ave, Philadelphia, PA 19118

Ways to Be Involved

CREATE A PORTRAIT

Artists age 25+ working in any medium are welcome to apply. All artists are juried before being paired with a family member or friend to create a portrait in honor of their loved one. [Learn More >](#)

In community,

Aubrey Fink

Executive Director

aubrey@soulshotportraitproject.org



Portrait of Maurice Railey by Lisa Wilde (Private)

Opportunities/Notices

ART News from Merrill Weber

Starting December 1st, meet this year's Party Animals!

Original mini oil paintings of animals wearing party hats - one released daily through December 25th.



Meet *Camille the Dancing Pig*, *Fitzgerald the Lobster*, and *Pippa the Pig* - Party Animals with personality by Merrill Weber



SPRINGCITY MILL STUDIOS

20 E. Bridge Street, Studio + Gallery 101/102
Spring City, PA 19475

Directions: [HERE](#)

Opportunities/Notices

Art News from Elizabeth Heller

I am happy to let everyone know about a class I will be teaching at the Cheltenham Center for the Arts, starting again on November 20, 2025, and running January 29, 2026.

(No class on Thanksgiving, Christmas, or New Year's Day).

The class is called: "Independent Study in Painting and Drawing", and has several scheduling options.

This class provides an opportunity for artists of intermediate and advanced levels to refine and strengthen their creativity in a relaxed and supportive studio setting.

Pursue your own original subjects and projects or choose to work from a still life arrangement. Optional visual themes to learn from, and relevant examples of great art, will be presented to the class.

An optional fourth hour can be added to the morning session.

Here is a link to read more about the class:

www.cheltenhamartcenter.org, and a link to my website:

www.Elizabethhellerart.com



August Flowers (Private Collection)
Oil on Panel, 9 3/4" X 7 1/2"

Membership

Stay in touch with current Sketch Club Members

Don't let sheltering in place prevent you from staying in touch with your Sketch Club friends and colleagues. Sketch Club members can access contact information for all current members. Go to the members only page at: <https://sketchclub.org/privatedirectory-php/>. After you log-in with the password sent to you in your acceptance email you can click on the Membership Directory link to access members contact information. Non-Sketch Club friends can find a listing of current members along with their websites if they have one at: <http://sketchclub.org/sample-page/current-members-contact-list/>:

Not a PSC Member?: Join Now!

If you're reading this edition of the Portfolio and you're not a member of the PSC, you should consider joining the more than 200 other Philadelphia area artists who have. The PSC is one of the most active visual art venues serving center city Philadelphia. The PSC is a hands-on organization that offers its members the opportunity to participate in all aspects of creating and presenting work to the public. It presents over 20 scheduled group and solo exhibitions annually and offers a wide range of daily workshops. [Get info and an application here.](#)

If you are a member of the PSC, please feel free to share the Portfolio with your artist friends and encourage them to become members.

Membership Renewal

You can check the status of your membership by going to the Current Members page on the PSC web-site: <http://sketchclub.org/sample-page/memberspace/>. All current members are listed. An asterisk (*) means that the membership has expired but is within the 60-day grace period for renewal. Names in red are active links to the individual's web site.

Renew Now! <http://sketchclub.org/annual-dues-payment/>

If you have any questions about your membership, please don't hesitate to contact us at membership@sketchclub.org or call the office: 215-545-9298.

Support the Sketch Club

Contribute

Please consider making your tax-deductible contribution now. These funds will be put to good use providing enhanced services to our members and friends.

Membership dues cover only a small portion of the PSC's operating expenses. Competition for funding for arts organizations like the Sketch Club is increasingly competitive and total funding for the arts is shrinking. Your additional support will keep the PSC an active support for visual artists in the Metropolitan Philadelphia area. The Philadelphia Sketch Club is an IRS designated 501(c) (3) non-profit organization.

You can call the office at 215-545-9298, mail checks to the Sketch Club or visit the Contribute page of our website.

Support the Sketch Club

Visit our **Contribute** page of our website to give online at:

<http://sketchclub.org/support-us/>

You can also support the PSC on an ongoing basis when you shop on Amazon. Go to: <http://smile.amazon.com/> and enter the Philadelphia Sketch Club in the Pick your own charitable organization box.

Your support makes it possible for the PSC to continue providing ongoing daily workshops and numerous annual gallery exhibitions.

Like, Link & Share

If you're not following the Philadelphia Sketch Club on Facebook re-tweeting Sketch Club tweets yet, it's time that you did. We have well over 2000 Facebook followers. Get the word out about the Sketch Club. Please click the like button and share your comments and invite your friends to like our page.

Follow @PhilaSketchClub on Twitter, we have almost 400 followers. Please click the heart button and re-tweet our announcements.

Include links on your website, blogs and social media to The Philadelphia Sketch Club to increase traction across social media platforms.

Follow us on Facebook, Twitter and Instagram now!



Classifieds

I am interested in hiring an artist to do 4 or 5 small sketches. Do you have a directory of artists who would entertain this type of small commission? Please contact the PSC office for contact information:

info@sketchclub

Thank you,
Marla Neeson



Your Ad Here... Have something to sell? Looking for something?
Contact portfolio@sketchclub to arrange for posting.



The Portfolio: The newsletter of the Philadelphia Sketch Club is published monthly. Editor, technical support, and webmaster: Ken Weiner. Send your member news, announcements and corrections to

portfolio@sketchclub.org. The due date for all materials is one week before the end of the month.

Back issues of the Portfolio are available at: <http://sketchclub.org/portfolio-archive/>.

Specifications for notice and banner submissions: <https://sketchclub.org/portfolio-submissions/>

Thanks to PSC member volunteers **Don Gauger** and **Ken Weiner**
for their ongoing support of Sketch Club
technology and communications functions.

The Philadelphia Sketch Club

235 S Camac Street
Philadelphia, PA 19107
(215) 545-9298
<http://sketchclub.org/>
gallerymanager@sketchclub.org
info@sketchclub.org

Administrative Director: Josie Rowley

Officers:

- President: Tiger Jaser
- Vice President: Donald Gauger
- Secretary: Alex Torch Pinski
- Treasurer: Kenneth Weiner

Board of Directors:

- Clayton Bright
- Renard Edwards
- Chloë Epstein
- Viktor Evdokimov
- Andrew Goms
- Richard Harrington
- Suzanne O'Connor
- Sam Olshin
- Mark T Richter
- PJ Smalley