

April 2026

Phillustration 17

April 5
thru
April 26
2026



Dungeon Diving Critter Crew by Perry Santulli

Dungeon Diving Critter Crew, Illustration, by Perry Santulli

This Month's Portfolio – (Click on the entry to view)

Sketch Club Special Events	2
Sketch Club Workshops	3
Volunteer	8
Sketch Club Critique Group	9
Main Gallery Events	11
Stewart Gallery Events	13
The Sketch Club Online Gallery	15
Members/Friends Alert	15
Art Natters: Members News	17
Opportunities/Notices	19
Membership	29
Support the Sketch Club	29
Classifieds	30

Send your member news, announcements, and corrections to: portfolio@sketchclub.org. The deadline for ALL submissions is 1-week before the end of the month.

Reminder:

It's never too late to *renew your membership*.

Pay online at:

<http://sketchclub.org/annual-dues-payment/>

or mail your check to:

The Philadelphia Sketch Club
235 S. Camac St.
Philadelphia, PA 19107

For questions please contact:

the Gallery Manager at:
215-545-9298 or email:
gallerymanager@sketchclub.org

Late Breaking News – See items that were submitted after the publication date. Go to:

<http://sketchclub.org/late-breaking-news/>
The PSC general email is: info@sketchclub.org

Sketch Club Special Events

The 2026 Sketch Club Book Club

Meeting on the last Monday night of the month online unless otherwise noted. To get the zoom link please RSVP.

Our next meeting of the month will be **April 27th at 6:30 PM** on Zoom. In order to participate, you will need to rsvp and get a link to the call. I hope you get a chance to read the book and take some notes. It will be a fun way to get started.

April I am calling, "Raphael Spring". We are looking at several books on the great Italian Renaissance artist, Raffaello Sanzio who is buried in the Pantheon. There are so many scholarly books and novels on this subject I thought we would pick one or two from a selection and then discuss him. A trip to the Metropolitan Museum Of Art in NYC to see the show, [Raphael, Sublime Poetry](#) will follow in April.



As always, all books are available through Head House Books (get a **10% discount** by mentioning the Sketch Club Book Club), all other independent book sellers, the Public Library (be prepared for a wait) The Athenaeum, The Library Company (membership may be required for these small private libraries) , the Strand (online) and Amazon.

You can also start following the Sketch Club on our new [Substack](#), which will publish more in- depth art news items for all those interested. Updates to the Book Club and ongoing discussions will be posted there.

See you on **Aril 27th at 6:30 PM!** - *Suzanne O'Connor*

Sketch Club Workshops

Watercolor: The Next Place to Start!

We're excited to open registration for our follow-up beginner watercolor course.

Join fine artist, Winsor & Newton demonstrator, and instructor [Kate Kern Mundie](#) as you gain confidence and control in watercolor. Students will work on gradient control, water bead timing, intentional mark making, and edge management. You'll study master watercolorists to better understand restraint, structure, and economy of means. Each class builds on the skills of the previous week, so steady participation is encouraged. Members and non-members welcome.

Seats are limited -

[Sign Up and Read More Here!](#)

Dates & Times:

Thursday evenings, 6:00 - 8:00 PM

April 2nd, April 9th, April 16th,
April 23rd, and April 30th

Location:

The Philadelphia Sketch Club

235 S. Camac St.

Philadelphia, PA 19107

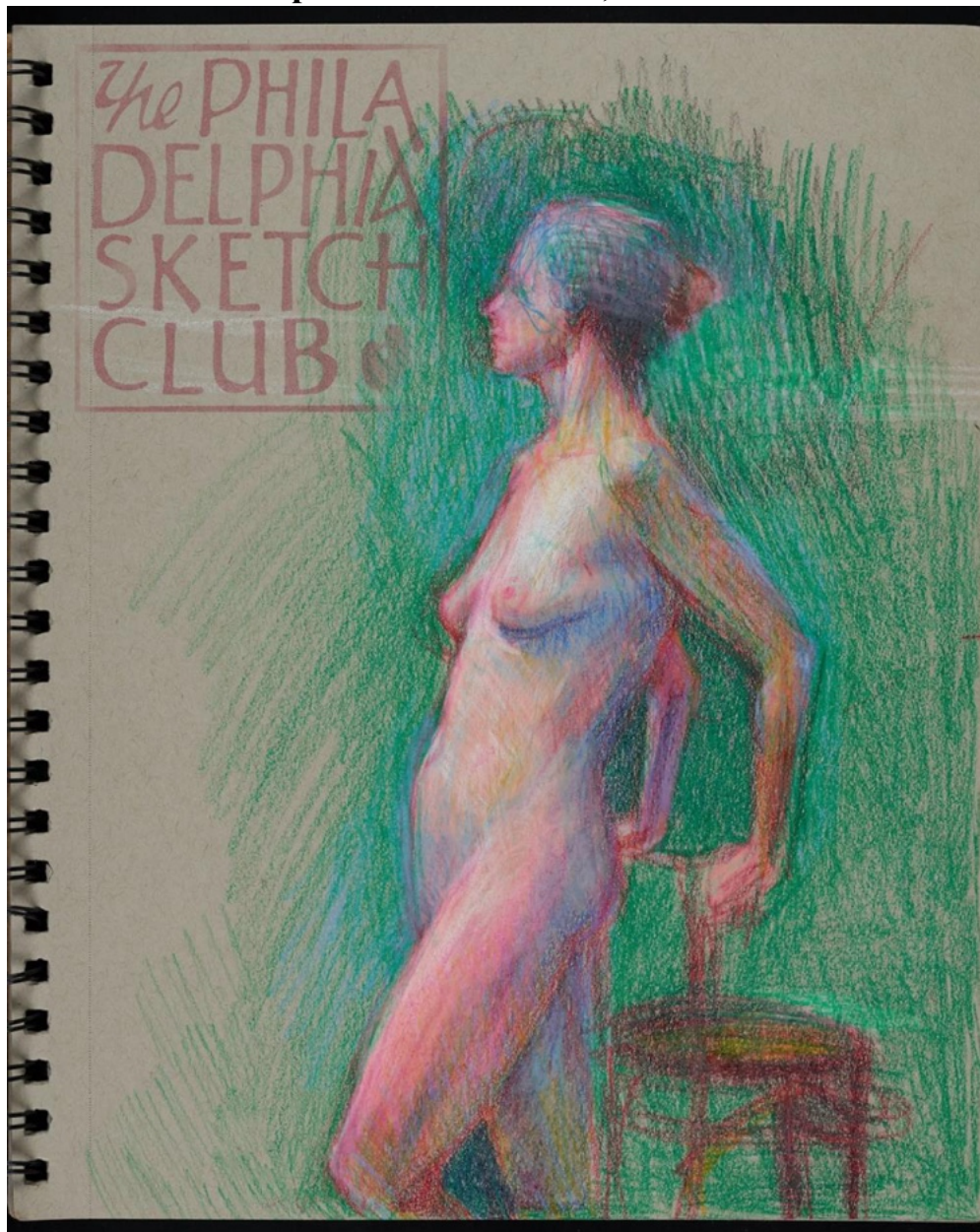
Upstairs Gallery



Sketch Club Workshops

Saturday Guided & Open Studios

Instructed price: \$25 members, \$30 non-members



Open Studio price: \$10 members, \$15 non-members, \$9 full-time students

Sketch Club Workshops

Saturday Guided & Open Studios

Elevate your artistry at the **Philadelphia Sketch Club**, America's oldest artists' club.

Our Saturday figure drawing workshops offer a unique, dual-track experience designed for everyone from curious beginners to seasoned professionals. Join us every Saturday in our historic upstairs gallery. Whether you prefer the freedom of an open studio or professional mentorship, you'll find a welcoming community dedicated to the tradition and craft of drawing from life.

- **Guided Tier:** Receive personalized, 1-on-1 instruction and live demonstration. Master the fundamentals of anatomy, proportion, and measuring techniques.

- **Open Studio Tier:** Enjoy a traditional, self-guided drawing environment at an accessible price point.

Flexible Sessions & Long Poses

To help you move beyond quick sketches, we offer two distinct sessions featuring extended poses.

- **Morning Workshop (9:30 AM – 12:30 PM):** Focus your energy on a one-week long pose, perfect for capturing a complete study in a single morning.

- **Afternoon Workshop (1:00 PM – 4:00 PM):** Deepen your practice with two-week long poses, allowing for the highest level of refinement over two consecutive Saturdays.

Winter 2026 Morning Instructor Schedule

- **March 7: PJ Smalley**

Winter 2026 Afternoon Instructor Schedule

- March 7: Jeffrey Filbert

- March 4: Pepper Hayes

Note: the format of **Saturday afternoons** is now a **two week pose** with a nude model.

Pricing & Access

No pre-registration or long-term commitment required—simply drop in with your preferred art supplies. We provide the easels, tables, and chairs

Guided Tier: \$25 Members | \$30 Non-Members

Open Studio Tier: \$10 Members | \$15 Non-Members | \$9 Full-time Students

Refine your vision. Join the tradition. See you this Saturday at the Philadelphia Sketch Club.

Sketch Club Workshops

Workshop Guidelines

- Please arrive early to find an optimal spot to work in and not disrupt the session during workshop time.
- Fees will be collected by the monitors after the first twenty minutes. Please have cash on hand. Tipping the models is highly encouraged.
- When setting up, please give space for others behind or in front of you. Make sure those in back can see the model.
- Please make every effort to wipe down your easel when leaving and make sure around your easel is clear of charcoal or pastel dust.
- Please observe the easel arrangement in the storage closet and replace your easel in the same manner.
- Please do not use turpentine for oils and bring your own container to dispose of used minerals safely.
- Wash all brushes ONLY in basement utility sink.
- Please do all aerosol spraying outdoors, front or back yard.
- If there is a need to adjust the pose, please inform the monitor directly, instead of the model.
- Taking pictures of the models is not allowed, unless explicitly permission is granted by the model. Anyone who needs a locker or has fees for a locker should contact the office at 215-545-9298 or workshops@sketchclub.org.
- Attendees under 18 require permission slip from legal guardian.
- We always appreciate your feedback. Let us know if you have any suggestions or feedback

PJ Bio - I am a classically trained painter and draftsman who attended the University of Pennsylvania, Yale University School of Art, and PAFA's certificate program. I have about 1,400 sessions of experience drawing and painting the model in this type of setting. Life drawing is a great way for us to stop overthinking and practice being in the moment. At the Philadelphia Sketch Club, I serve on the board of directors and as co-chair of workshops. During the weekends, you can find me drawing or facilitating workshops and playing 8-ball on the club's magnificent 1880's Union League pool table.

Sketch Club Workshops

All Open Studio Workshops

Our workshops provide a welcoming open studio environment where artists of all levels can gather to create, learn, and connect. Whether you're an experienced artist seeking to refine your techniques or a newcomer eager to explore your creative side, our workshops offer a space where you can draw and paint the human figure from a life model, nude and clothed. We offer a variety of sessions from short dynamic gestural poses to long classical poses, offering opportunities to fully explore the human form.

Our spacious studio space has been recently renovated. Newly installed gallery lighting--with ultraviolet filters to protect paintings--ideal for working artists. The space is bathed in natural light.



is

Mondays	Tuesdays	Wednesdays	Thursdays	Saturdays	Sundays
6:30 PM to 9:30 PM Nude model, short and long poses Monitor: Bob Bohne	12:00 PM to 3:00 PM Nude model, long pose Monitor: Volunteer	6:30 PM to 9:30 PM Nude model, short and long poses Monitor: Andrew Goms	12:00 PM to 3:00 PM Costumed model, long poses Monitor: Bob Bohne	9:30 AM to 12:30 PM Nude model, gestural, short, and long poses Monitor: Tiger Jaser 1:30 PM to 4:00 PM Figure Drawing Class & Open Studio	5:30 PM to 8:30 PM Nude model, gestural, short Poses Monitor: PJ Smalley

Open Studio Schedule

No prior signup needed. Join any of our scheduled workshops and bring your own art supplies. We provide chairs, tables, and easels. All workshops are held in the Sketch Club's upstairs gallery and are open to the public and run weekly, excluding holidays and inclement weather. The schedule above is accurate as of 2023, cancellations will be posted to the front page of Sketchclub.org, and timely notifications will be sent to the workshop mailing list. Join our workshops mailing list to stay informed of the latest workshop activities, schedule updates, and learn about upcoming sessions.

Sketch Club Workshops

Fees

\$10 for members / \$15 for non-members ([become a member](#)) / \$9 for full-time students (student ID required)

- Our workshops are open to individuals at any skill level
- You do NOT have to be a member of the Philadelphia Sketch Club to participate in the workshops.
- You must bring your own supplies. Easels, tables and seating are provided
- Only odorless terpenoid or similar solvent permitted, and you must take it with you.
The PSC does not have facilities for disposal of solvents
- A small number of electrical outlets are available for digital device users
- Workshop attendees have the opportunity to exhibit their work at [The annual Workshop Show](#)

Watch for emails or visit

<https://sketchclub.org/workshops/> for more details on the still life workshop and holiday cancellations.

Please Note: Those who use oil paints should bring their own container(s) to remove used solvents. Odorless solvents only. See more important attendee information at: [Workshop Attendee Responsibilities](#)

Thank you to all the PSC members who donated their time and expertise to make these workshops available to PSC members and the Philadelphia art community.

Our monitors are all volunteers. If you're interested in volunteering, please contact us at workshops@sketchclub.org.

If you're interested in modeling for any of our workshops, [sign up here](#)



Volunteer

Be an Active Sketch Club Member; Volunteer!!

The Philadelphia Sketch Club is managed entirely by volunteers except for the gallery manager, housekeeping, and bookkeeper.

The PSC always needs volunteer members. Volunteering is one of the most important aspects of being a Sketch Club member and it is the one of the best ways to take advantage of the PSC. You'll be working with colleagues who share the same interests and helping the PSC provide unique services to the visual arts community. Sign up for an activity today. To get involved, contact us at: info@sketchclub.org



Sketch Club Critique Group

The Sketch Club Critique Facebook Group

Join the Critique Facebook Group

Join your Club colleagues online at the "Philadelphia Sketch Club Critique"-- a Private group for Active PSC members only on Facebook.

Colleagues, please join in and contribute to your online art community. We all miss the camaraderie we enjoy at the Club house. The "Philadelphia Sketch Club Critique" is a chance to get together online until we can gather once more around the punch bowl and raise a toast, "to the Sketch Club, past, present and future."

Here's how it works:

- Active members go to the new "Philadelphia Sketch Club Critique" page and request access, which is available to all Club members in good standing.
- Once in, post your work and watch as other members' post their artwork for critique.
- More details will be posted within the group including the option to be considered for a monthly "Highlights", a curated online gallery to be published on our external site/Instagram/Twitter channels.

This Facebook Group is private; this means that as Members submit their work others are invited to critique each other in a professional and respectful way.

Critique Group Links:

- You can find a link on the Sketch Club website: <https://sketchclub.org/>
- The Critique Group's Facebook Page: <https://www.facebook.com/groups/PSCCritique>
- The PSC's main FaceBook page: <https://www.facebook.com/thesketchclub>

Sketch Club members: come post your work on our Facebook Critique group.

A suggestion, try posting your artwork to the online critique group a week or more before attending a critique at our Clubhouse. Get additional critique insights from our online-only Club members.

"A professional artist is one who submits their work for public critique, not the amount of money they earn from their artwork." -- Michael Kuncevic, late PSC member.



Sketch Club Critique Group

Fine Arts News Highlights

Found online and curated by Sketch Club member Don Gauger.

Philadelphia Area

Philadelphia Museum of Art — [Spring Exhibitions & April Programs](#)

Major spring exhibitions in painting, sculpture, and printmaking with lectures and tours.

ICA Philadelphia — [Spring Contemporary Exhibition](#)

New exhibition featuring emerging artists across photography, installation, and mixed media.

PAFA — [Annual Student Exhibition](#)

Flagship showcase of painting, printmaking, and sculpture by PAFA students.

Barnes Foundation — [Spring Gallery Focus](#)

Programs highlighting post-Impressionist and modern painting collections.

Woodmere Art Museum — [Regional Artists Exhibition](#)

Exhibition of Philadelphia-area painters and sculptors with regional focus.

United States (National) US

[Art Expo New York 2026](#)

Large contemporary art fair featuring painting, photography, and sculpture.

MoMA — [Spring 2026 Exhibitions](#)

Major exhibitions in modern and contemporary art continue through April.

National Gallery of Art — [Special Exhibitions](#)

Rotating exhibitions of painting, prints, and sculpture in Washington, D.C.

Whitney Museum — [Biennial Preparations & Exhibitions](#)

Ongoing exhibitions and previews tied to upcoming biennial programming.

Getty Center — [Spring Exhibitions](#)

Photography and historical painting exhibitions continue in Los Angeles.

World

Venice Biennale 2026 — [Opening Preparations](#)

Final announcements and installations ahead of the international exhibition.

[Art Brussels 2026](#)

Leading European contemporary art fair featuring painting and sculpture.

Centre Pompidou — [Spring Exhibitions](#)

Major Paris exhibitions in modern and contemporary art.

Tate Modern — [April Exhibitions](#)

London exhibitions in painting, installation, and photography.

Sydney Biennale — [2026 Programming](#)

International contemporary art programming continues into April.

Main Gallery Events

Call for Entries: Absolutely Abstract 2026

We're excited to open submissions for our annual **Absolutely Abstract** exhibition at the Philadelphia Sketch Club!

This is an open, juried show for abstract works. Submitted pieces must be abstract, and may be 2D or 3D in any medium.

Please note: All works **MUST** be framed and wired to hang. Works may not exceed 40" in any dimension, including frame. Make sure your information is accurate for each entry; your information will appear exactly as you enter it on all show materials.

Entry is by on-line submission

Deadline for online submissions: 11:59 PM Friday, April 3rd, 2026

View the Prospectus (containing ALL important show information!) and enter online at the links below:

[PROSPECTUS](#) | [ENTER ONLINE](#)



For EntryThingy instructions and current open calls, visit our [Enter an Exhibition](#) page.

Main Gallery Events

The April Exhibition: Phillustration 17 Juried Show

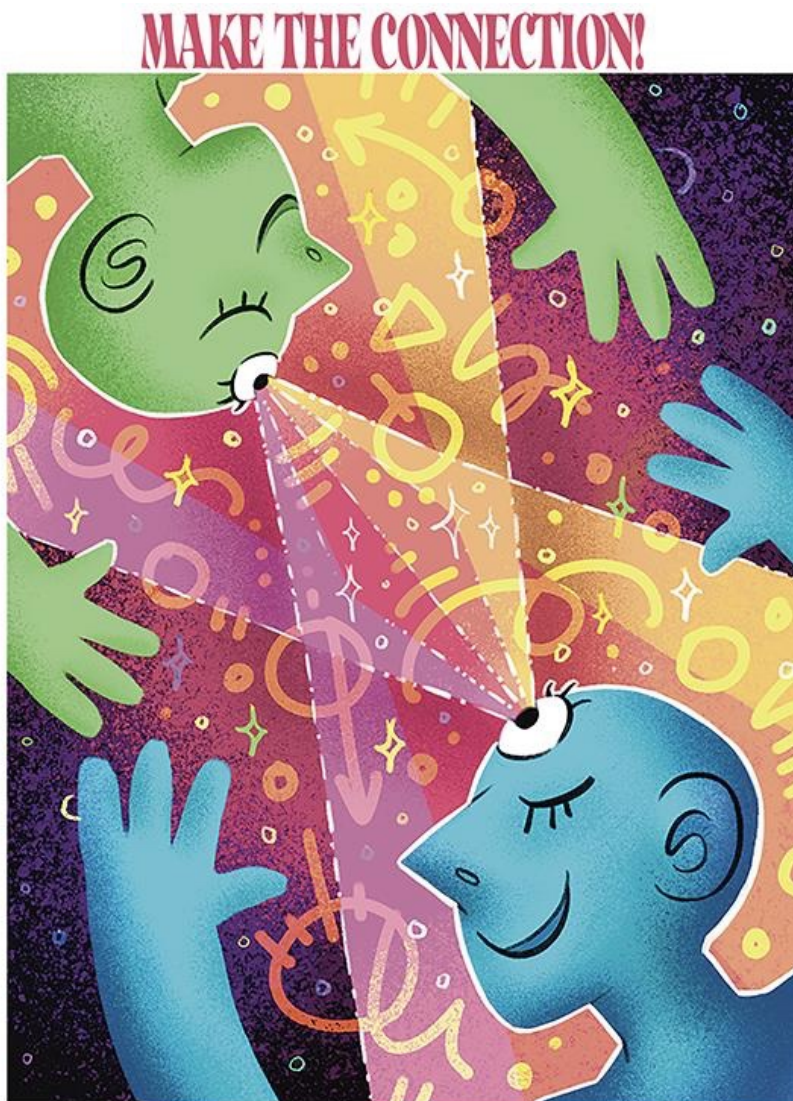


ILLUSTRATION BY BEAR BOTAK

PHILLUSTRATION 17
APRIL 5 thru APRIL 26 2026 at the
PHILADELPHIA SKETCH CLUB
RECEPTION SUNDAY APRIL 12 1-3 PM

Stewart Gallery Events

This month in the Stewart Gallery

The Stewart Gallery schedule for 2026:

- **January: Bob Bohne**
- **February: Closed**
- **March: *A Current History*, PAFA Alumni Council Group Show**
- **April: Drawing Marathon/Merchandise Competition**
- **May: Open--[Stewart Gallery Rental Information](#)**
- **June: Group Exhibit: PJ Smalley, Viktor Evdokimov, Andrew Goms**
- **July: National Association of Women Artists, Pennsylvania Chapter**
- **August: Sam Olshin**
- **September: Open--[Stewart Gallery Rental Information](#)**
- **October: Gala**
- **November: Gala**
- **December: Michael Cardea**

Merchandise Design Competition



Stewart Gallery Events

PSC Merchandise Design Competition

Welcome to the Philadelphia Sketch Club's Merchandising Design Competition!

This will be a competition to create merchandise to be used by the Philadelphia Sketch Club as promotional items for the club. Artists will submit their work online, and a group of finalists will be selected.

Finalists will display their work in the Stewart room of the Philadelphia Sketch Club. Club Members and the public will be able to vote on finalists' designs to be made into merchandise for the PSC.

View submission specifications in the Prospectus: [MerchDesignComp](#)

Enter at the link: [PSC Merchandise Design Competition – EntryThingy](#)

When:

The competition submissions closed **March 29th**.

Notifications of competition acceptance will be sent the week of Tuesday, **March 31th**.

Finalists will be required to have their designs printed for display during the month of April.

Drop off will occur Wednesday, **April 15th 1-5 PM**; Friday, **April 17th 1-5 PM**

(If shipping artwork, view PSC Shipping Terms and Conditions on our website).

Where: Submission will be conducted on Entrythingy.

Finalist's work will be printed for a live viewing in the Stewart Gallery of the Philadelphia Sketch Club.

Voting will occur on the [PSC's competition web page](#) beginning **April 5th** and close **April 26th**.

Winners will be announced in person at the reception on **May 17th** and online.

Voting: Club members and the public can vote online for their favorite designs from the pool of finalists.

Need some guidance on creating your design? Here are some optional ideas to get you started:

- PSC was founded in 1860 and is America's oldest artist club
- We are located on Camac St in Philadelphia, alongside The Plastic Club. Camac St. has a deep history of arts and culture.
- Take a walk around the building and let our collections inspire you!
- We've got Zeus by the front door, wooden statues in our ceilings, a pool table, bust castings in our library, boats in the workshop space, and much more to be explored!
- We host weekly workshops where artists and models come together to create!
- PSC is a place of community and camaraderie that welcomes all creators and art lovers.
- Consider that these designs are going to be printed on things like shirts, hats, sketchbooks, and more. Tailor your designs to support functionality and simplicity.

Merchandise Design Competition



Contact Alex Torch for any questions regarding the competition: alex.torch@sketchclub.org

The Sketch Club Online Gallery

Visit the Sketch Club Online Gallery: **Always Room for More Work!**

Go to the Sketch Club's on-going open gallery to see recent updates with work by PSC members and friends:

<https://sketchclub.org/sketch-club-open-gallery/>.

Members and friends can submit up to 4 images.

Send your submissions to:

portfolio@sketchclub.org.

Include with your work:

- **your name;**
- **title;**
- **size;**
- **and medium.**

For photos of yourself, include:

- **Who you are**
- **and a brief description of the image.**

Members/Friends Alert

Have you moved? Changed your email? New phone number?

Don't miss any Sketch Club upcoming events, workshops, or exhibitions. If you change your address, email, or phone number let us know so we can keep your contact information in our database current. You can contact the gallery manager at 215-545-9298 or email to:

<mailto:info@sketchclub.org>

Members/Friends Alert

On-Line Resources

- The Sketch Club Critique Group: <https://www.facebook.com/groups/PSCCritique>
- The Sketch Club Open Gallery: <https://sketchclub.org/sketch-club-open-gallery/>
- The Sketch Club's web site: sketchclub.org
- Our Facebook page: <https://www.facebook.com/thesketchclub/>
- Instagram: <https://www.instagram.com/philadelphiasketch/>
- Twitter: <https://twitter.com/PhilaSketchClub>
- Substack: <https://substack.com/@philadelphiasketch>
- YouTube: <https://www.youtube.com/@philasketchclub>
- Members: Stay in touch with other PSC colleagues. For contact information, go to the members only page at: <http://sketchclub.org/members-only-2/>. See Stay in touch with current Sketch Club Members in the members section below for instructions.

Non-Sketch Club friends can find a listing of current members names and business websites, if one is available, at:

<http://sketchclub.org/sample-page/current-members-contact-list/>.

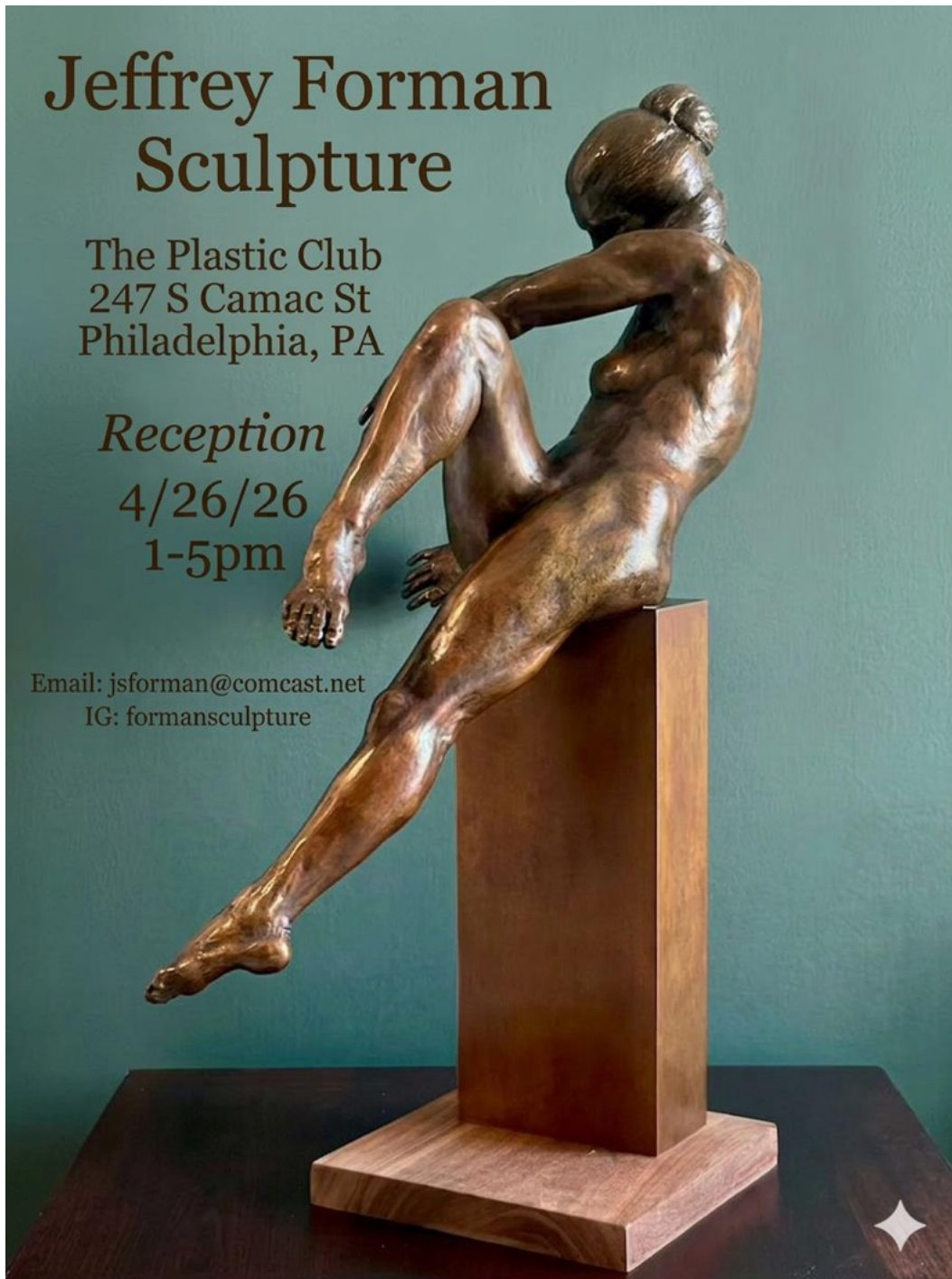
Art Natters: Members News

Jeff Forman Sculpture at the Plastic Club

Jeff Forman will be exhibiting his sculpture at the Plastic Club on 4/26/25.

Here is your invitation

Jeff Forman. Jsforman@comcast.net.



Art Natters: Members News

Violet Alexandre: Mythic Gallery: Redefining Representation for Emerging Artists

Dear Philadelphia Sketch Club Community, as Mythic Gallery continues to grow, we remain committed to representing emerging and mid-career artists whose work carries both creative excellence and meaningful intention. We are currently expanding our roster and are open to artists submitting for consideration. If you or someone you know may be a strong fit, please feel free to reach out directly to me at violet@mythicgallery.com.

This month, I am pleased to spotlight artist Kelly Jean Lawler.

Kelly describes herself as a seeker, healer, and maker, exploring the energy that connects us all. Through repetition and expansive fields of color, her practice becomes a meditative flow state, resulting in work that invites healing, connection, and a shift from “I” to “we.” Her socially engaged approach encourages collaboration and community as part of the creative experience.

I am including two of Kelly’s pieces below for you to experience. To learn more about her work and practice, please visit: <https://mythicgallery.com/artists/kelly-jean-lawler>

Kind regards, Violet Alexandre, Mythic Gallery | CEO & Founder

email: violet@mythicgallery.com website: <https://mythicgallery.com>



Sea. Sun. Sand. Oil pastel on craft paper
50” x 36”, Kelly Jean Lawler



Life Energy Waves, Watercolor & Thread
5’ x 4’, Kelly Jean Lawler

Opportunities/Notices

News and Announcements from the Philadelphia Creative Community

We're happy to share your news and announcements at no cost—it's our way of supporting Philadelphia's creative community. We always welcome contributions.

If you'd like to join us, we'd love to consider your membership application.

[Contribute to the Sketch Club Here](#) [Apply for PSC Membership Here](#)

ART-Venture Retreat in Andalusia, Spain | October 25–31, 2026

Artist and educator **Birgit Raders-Eichinger** invites art lovers, cultural explorers, and creative individuals to experience an immersive abstract art retreat in southern Spain. This week-long program blends guided studio practice with cultural discovery, meaningful conversation, and artistic inspiration—all set against the breathtaking landscape of Andalusia.

Participants will enjoy an exclusive stay at a beautifully restored 13th-century fortress estate, surrounded by nearly three acres of curated gardens. The retreat is intentionally designed as a small-group experience, ensuring personalized guidance, meaningful exchange, and a deeply supportive creative environment. In addition to daily art sessions, the program includes thoughtfully curated cultural experiences led by a local guide—such as a traditional flamenco performance, a visit to a contemporary art museum housed in a former monastery, olive oil tasting and much more; of course, the rich and vibrant cuisine of Andalusia.

Designed for both emerging and experienced artists, the retreat fosters creative growth and genuine connection within an inspiring and intimate setting. Space is limited.

Registration opens March 1, 2026. For details & registration: Website: <https://be-abstract-art.square.site/>



ART-Venture Spain

**Abstract Art Retreat
in the Heart of Andalusia - Spain**

Join us for a six-night creative retreat combining daily abstract art workshops and inspiring Andalusian cultural experiences — all set in a private, luxury estate just outside of Seville.

October 25-31, 2026
Seville, Spain

Daily Abstract Art Workshops
Led by an accomplished international artist to inspire and guide artists of every level

Exclusive Andalusian Estate Stay
A 13th century fortress surrounded by nearly 3 acres of curated gardens

Cultural Immersion
Thoughtful activities led by a local guide - think flamenco show, excursions, contemporary art museum, and Andalusian cuisine

SCAN OR
CLICK HERE TO
SIGN UP

LIMITED SPOTS - SMALL GROUP EXPERIENCE

Opportunities/Notices

The Philadelphia Activities Fair

Check in with the Philadelphia Sketch Club at our Booth. Hope to see you there!
 April 12, 11am-3pm, Philadelphia Ethical Society

Information about the Fair event is available at: joinphilly.com/events/2026-activities-fair

JOIN PHILLY PRESENTS

THE PHILADELPHIA ACTIVITIES FAIR

ABOUT THE ACTIVITIES FAIR

Remember the high school club fair? This is that, but for all of Philly. Running crews. Book clubs. Art collectives. Music groups. Civic orgs. Crafters. Gamers. Cyclists. And more. Meet the people behind them. Find out how to join. **Find your people.**

RSVP + DETAILS

MADE POSSIBLE BY

CITY & CAST Philly
 THE PHILADELPHIA ETHICAL SOCIETY
 PFCU PHILADELPHIA FEDERAL CREDIT UNION
 Dirty Hands Studio
 free LIBRARY OF PHILADELPHIA
 Glitter
 70th Anniversary of the City of Philadelphia

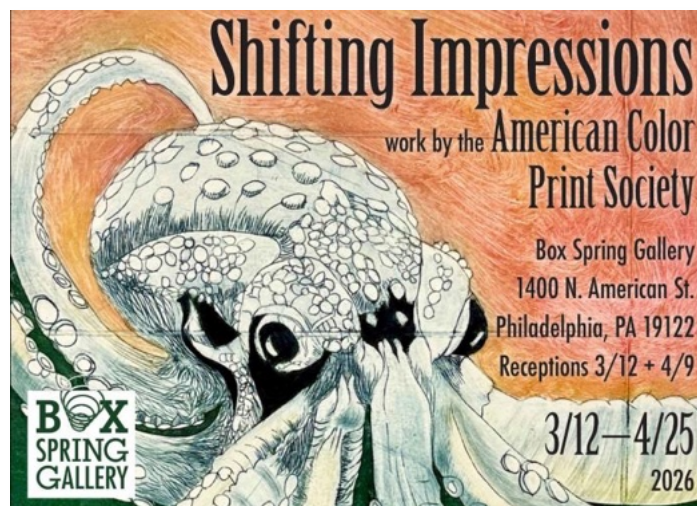
Opportunities/Notices

NEWS FROM BOX SPRING GALLERY



ACPS Print Show Opens March 12

- On View: March 12 through April 25, 2026
- Receptions: Thurs, March 12, 6–9pm and Thurs, April 9, 6–9pm
- [Box Spring Gallery](#) at [Crane Arts](#), 1400 N. American St, 100C, Philadelphia, PA 19122
- Open Hours: Thurs–Sat, 1–6pm + by appointment by emailing contact@boxspringgallery.com.



Artwork by Bonnie Goldstein

Box Spring Gallery hosts *Shifting Impressions*, a juried selection of works by members of the [American Color Print Society \(ACPS\)](#), reflecting depth, innovation, and range within contemporary printmaking.



CALL FOR ART: Liberty & Justice
Liberty and Justice are abstract concepts and foundational societal ideals. How can messages of Liberty and Justice be conveyed visually in respect to Philadelphia, our Nation's 250th Anniversary, historical and/or current events? Submit your artwork to our juried exhibition! boxspringgallery.com/call-for-art


CREATIVE CONSULTING for ARTISTS + SPACES

Let me help you:

- Brainstorm and execute a vision
- Manage the things that are in your way
- Connect to opportunities and resources
- Enjoy and celebrate the process!



→ gaby@gabyheit.com → [@gabyheit](https://www.instagram.com/gabyheit)

 A place to celebrate where art and design meet, Box Spring Gallery provides carefully curated exhibitions, with opportunities to purchase contemporary art and design by a variety of creatives. Receptions every second Thursday of the month! Visit boxspringgallery.com for more info.

Opportunities/Notices

Art News from Linda Dubin Garfield

Greetings! I believe art makes the world a better place.
How refreshing it will be to welcome spring and be done with snow!! Lots of art activity to look forward to.
Hope to see you at these exhibits or at my studio. Contact me and come visit.
Praying for peace all over the world!! Make art, not war.
Creatively yours, Linda

Special Delivery by ARTsisters

Henry Gallery at PSU Great Valley
30 Swedeford Rd, Malvern, PA. Through May 15

Mixed media workshop at Bala Cynwyd Library

Tuesday, April 22, 2026 (Earth Day) 7- 8:15 PM
Join us to make mixed media work about Earth Day!!
All materials are provided but you can bring any elements you want to include.

Landscape Remembered

Pour Richard's Coffee Company
39 Berkeley Rd, Devon, PA. Through May 20

2nd Annual Judy Herman Members Exhibit

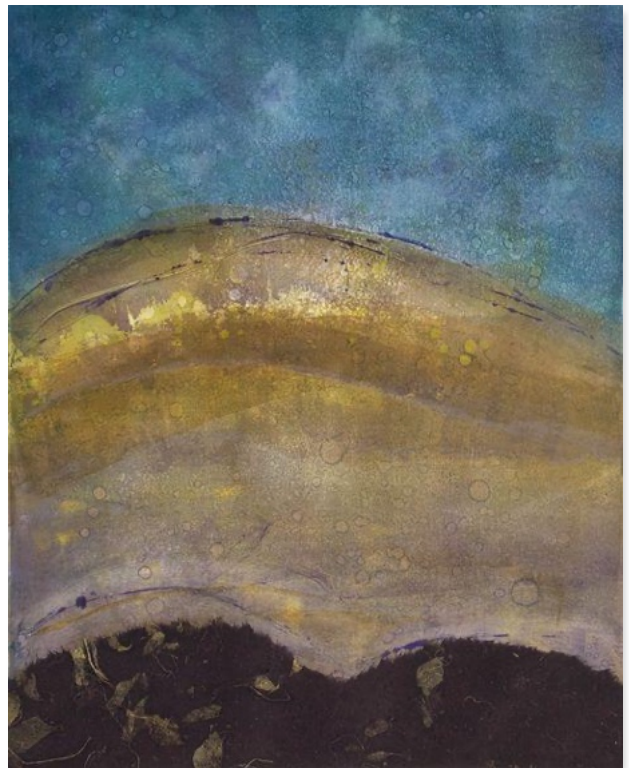
April 6- June 5, 2026.
Reception: Saturday, April 11, 4- 6 PM
Main Line Art Center,
746 Panmure Rd, Haverford, PA

DVAA ART Book Club by ZOOM

Book Club is a reading group chaired by a volunteer DVAA Member each month. This program allows DVAA Members and others to discuss significant literary works concerning pressing issues in the art world. Book Club is an open program for all. To get the Zoom link go here <https://davinciartalliance.org/book-club>
All are invited. All participants are free! Non-Members welcome!
Da Vinci Art Alliance, 704 Catharine St, Philadelphia, PA 19147

If you missed my one minute of fame on Action News, [here is a link to view it](#). Thanks Matteo!

Linda Dubin Garfield · 41 Conshohocken State Rd #309 · Bala Cynwyd · Pennsylvania · 19004
I look forward to hearing from you | garf621@aol.com | 6102566037 www.lindadubingarfield.com



Earth Waves 8, mixed media, Linda Dubin Garfield

Opportunities/Notices

Merrill Weber: The Party Animals Book Is Coming!

If you have ever loved one of my *Party Animals*, this is for you.

I am creating a book that gathers the paintings, their party hats, and the stories behind them. A joyful, art-filled volume you can hold in your hands.

Art has always been part of my life. At thirteen, I illustrated three published children's books.



Merrill Weber, holding a picture



Now I'm bringing my own characters and stories to the page. You can see samples of the Party Animals paintings on my website.

[View the Collection!](#)

I'd love to see you in person!

New shows are added regularly.

[See all the shows.](#)



Meet Blanche the Dancing Bunny, Fitzgerald the Lobster, and Dumpling the Panda Bear - three Party Animals with personality.

Opportunities/Notices

Art News from David Botkin

Hello — my name is David Botkin, and I’m a relatively new artist in Philadelphia and to the art world in general. Over the past year and a half, my work has focused on using my own digital photographs as a starting point and applying various color mediums to printed outlines of those images.

Recently, through classes and encouragement from close friends and family, I’ve been challenged to create art purely from my imagination. While there was a learning curve in this new direction, I’ve come to realize that the possibilities of creating from my imagination are even more infinite than the digital photographs I once relied on. My art website: <https://www.bopperart.com> Below is a selection of my work.



Deep Space, 2026, Paint on paper, 8x11, David Botkin



If the leaves could talk, markers, highlighters, digital picture on paper, David Botkin



Rough Seas, 2026, paint on canvas, 14x18, David Botkin



Emotional drips, 2026, paint, highlighters, digital picture on paper, David Botkin

Opportunities/Notices

ART News from Elizabeth Heller

Independent Study in Painting and Drawing

Taught By Elizabeth Heller at The Cheltenham Center for the Arts

I am happy to let everyone know about a class I will be teaching at the Cheltenham Center for the Arts, starting again on **February 12, 2026**, and **running through April 2, 2026**. (Spring 1 Session).

This class provides an opportunity for artists of intermediate and advanced levels to refine and strengthen their creativity in a relaxed and supportive studio setting. Pursue your own original subjects and projects or choose to work from a still life arrangement. Optional visual themes to learn from, and relevant examples of great art, will be presented to the class. An optional fourth hour can be added to the morning session.

Read more about the class: <http://www.cheltenhamarts.org>

See more of my work on my website: www.Elizabethhellerart.com



Requiem
by Elizabeth Heller

Opportunities/Notices

ART News from Souls Shot Portraits

[Here is the link](#) to read the entire and extensive newsletter in your browser.

The Soul Shots Portrait Project: "Respect for all lives affected by gun violence-- belief in art as a powerful tool of advocacy and transformation."



Portrait of Susan Mondrosch Williams
by Evangeline Bragitikos



Love Thy Brother Portrait of Darrin Grandy/Meatball by Michelle Brown

Reaching young people through art to address the issues of gun violence, gun safety, gun sense.

Exhibitions:

[Beth Am Israel](#) March 6 through April 9

1301 Hagys Ford Road Penn Valley, PA 19072 610-667-1651 **Opening reception Thursday, March 12, 6:45-9, program at 7:30** Gallery hours Mon. -Thurs. 9-4, Fri. 9-noon

Group tours contact Gari Weilbacher garijw@gmail.com

Pittsburgh Exhibition *Portraits from our Collection* March 1 through April 10

[Shadyside Presbyterian Church](#) 5121 Westminster Place Pittsburgh, PA 15232

Gallery hours Mon. - Fri. 9:30 to 3:30 or by appointment 412 682 4300 info@shadysidepres.org

[Montgomery County Community College Exhibition](#) 340 DeKalb Pike, Blue Bell, PA 19422

Portraits from our collection March 20 through April 27 Gallery hours M - F 8:30-6, Sat. 12-5

Ways to Be Involved 🎨 **CREATE A PORTRAIT** Artists age 25+ are welcome to apply.

All artists are juried before being paired with a family member or friend to create a portrait in honor of their loved one. [Learn More >](#)

In community, **Aubrey Fink**, Executive Director, aubrey@soulshotportraitproject.org

Opportunities/Notices

Letter to the Philadelphia Arts Writing Community

An Invitation to Contribute to a New Philadelphia Visual Arts Journal, *Art & Image Philadelphia*

Dear Philadelphia Arts Writers,

We are pleased to share that InLiquid is developing a new weekly digital journal dedicated to the visual arts in Philadelphia, and we would like to invite you to help shape this publication from the beginning.

Philadelphia's visual arts community—spanning commercial galleries, nonprofit spaces, DIY venues, academic institutions, and thousands of working artists—deserves consistent, thoughtful, and accessible coverage. Our aim is to create a platform that highlights the organizations, exhibitions, artist projects, community initiatives, and conversations that animate our city's cultural life.

We envision a publication that reaches both the arts community and a wider public of collectors, supporters, and enthusiasts in Philadelphia and beyond. We will begin by leveraging InLiquid's mailing list, with the intention of growing the journal into a central resource for visual arts discourse in the region.

We are now seeking contributors for our initial group of articles. To ensure a strong and sustainable launch, we will begin by publishing selected pieces in InLiquid Magazine, clearly identified as part of the forthcoming *Art & Image Philadelphia* initiative. This soft-launch phase allows us to build an initial library of articles; once we have a strong base of content and a steady flow from contributors, we will re-release these pieces in the journal's inaugural email editions for InLiquid's 12,000+ subscribers.

Please note that this is a volunteer effort at the outset—the project is not yet funded. However, as *Art & Image Philadelphia* grows, we plan to seek support that will allow us to compensate writers.

Attached you'll find our Guiding Principles, Submission Guidelines, Article Approval Process, and Style Guidelines. If you are interested, we invite you to review these materials and consider submitting a pitch. We welcome your questions, proposals, and ideas, and we look forward to building this new platform together. To pitch an article, propose an idea, or request additional information, please contact Pete Sparber at: pete@inliquid.org.

Warm regards,

Sam Davis — Content and Communications Manager, InLiquid

Lizzy Park — Editorial Assistant, InLiquid

Pete Sparber — Founding Editor, *Art & Image Philadelphia*

Rachel Zimmerman — Executive Director, InLiquid

Guiding Principles

1. Build and strengthen the visual arts community.

The journal should foster connection, visibility, and support across the Philadelphia arts ecosystem.

2. Write about what excites and inspires you.

Choose topics that matter to you—artists, exhibitions, community actions, or broader cultural questions.

3. Avoid negativity.

This is not a platform for harsh criticism or takedowns. Our goal is to celebrate and reflect on the vibrancy of the scene.

4. Engage with care and transparency.

Always seek the cooperation of the people you write about. Let artists and organizers know when they are being featured and be open to factual corrections.

Opportunities/Notices

Submission Guidelines: InLiquid Art & Image Philadelphia, a New Philadelphia Visual Arts Journal

1. All article pitches must be pre-approved.

Please follow the process outlined in the *Article Approval Process* section below.

2. Editorial pacing and scheduling will vary.

Articles will be scheduled based on timeliness, space, and thematic balance. Not all accepted pitches will run immediately.

3. Please follow the Style Guidelines.

Double-check spelling, names, links, and other factual details before submitting.

4. Photographs must include proper credit and permissions.

For all images, please include:

- Photographer's name and permission
- Artwork details (title, artist, dimensions, medium, year)
- Alt text and image descriptions for accessibility (see Style Guidelines for examples)

Article Approval Process

To submit an idea for consideration:

1. Send a brief pitch (3–5 sentences) to pete@inliquid.org, including:

- The topic
- Why it's relevant now
- Any key figures or exhibitions involved

2. You will receive feedback within a few days—either approval to proceed or suggestions for clarification or revision.

3. Once approved, articles should be submitted as Word documents or Google Docs, with accompanying images and captions.

Style Guidelines (Overview).

- **Tone:** Conversational but professional. Think *smart, clear, and engaged*.
- **Length:** Typically 500–800 words for reviews, up to 1200 for interviews/features.
- **Voice:** First-person is welcome, but keep the focus on the subject.

○ **Formatting:**

- Use plain fonts (e.g., Times or Arial)
- Italicize exhibition and artwork titles
- Include links where relevant

○ **Alt Text & Image Descriptions:**

For each image, include 1–2 sentences describing the visual content.

Example: "Installation view of 'Landscapes of Memory,' featuring a series of black-and-white photographs arranged in a grid on a white wall."

Membership

Stay in touch with current Sketch Club Members

Don't let sheltering in place prevent you from staying in touch with your Sketch Club friends and colleagues. Sketch Club members can access contact information for all current members. Go to the members only page at: <https://sketchclub.org/privatedirectory-php/>. After you log-in with the password sent to you in your acceptance email you can click on the Membership Directory link to access members contact information. Non-Sketch Club friends can find a listing of current members along with their websites if they have one at: <http://sketchclub.org/sample-page/current-members-contact-list/>:

Not a PSC Member?: Join Now!

If you're reading this edition of the Portfolio and you're not a member of the PSC, you should consider joining the more than 200 other Philadelphia area artists who have. The PSC is one of the most active visual art venues serving center city Philadelphia. The PSC is a hands-on organization that offers its members the opportunity to participate in all aspects of creating and presenting work to the public. It presents over 20 scheduled group and solo exhibitions annually and offers a wide range of daily workshops.

[Get info and an application here.](#)

If you are a member of the PSC, please feel free to share the Portfolio with your artist friends and encourage them to become members.

Membership Renewal

You can check the status of your membership by going to the Current Members page on the PSC web-site: <http://sketchclub.org/sample-page/memberspace/>. All current members are listed. An asterisk (*) means that the membership has expired but is within the 60-day grace period for renewal. Names in red are active links to the individual's web site.

Renew Now! <http://sketchclub.org/annual-dues-payment/>

If you have any questions about your membership, please don't hesitate to contact us at membership@sketchclub.org or call the office: 215-545-9298.

Support the Sketch Club

Contribute

Please consider making your tax-deductible contribution now. These funds will be put to good use providing enhanced services to our members and friends.

Membership dues cover only a small portion of the PSC's operating expenses. Competition for funding for arts organizations like the Sketch Club is increasingly competitive and total funding for the arts is shrinking. Your additional support will keep the PSC an active support for visual artists in the Metropolitan Philadelphia area. The Philadelphia Sketch Club is an IRS designated 501(c) (3) non-profit organization.

You can call the office at 215-545-9298, mail checks to the Sketch Club or visit the Contribute page of our website.

Visit our **Contribute** page of our website to give online at:

<http://sketchclub.org/support-us/>

Support the Sketch Club

You can also support the PSC on an ongoing basis when you shop on Amazon. Go to: <http://smile.amazon.com/> and enter the Philadelphia Sketch Club in the Pick your own charitable organization box.

Your support makes it possible for the PSC to continue providing ongoing daily workshops and numerous annual gallery exhibitions.

Like, Link & Share

If you're not following the Philadelphia Sketch Club on Facebook re-tweeting Sketch Club tweets yet, it's time that you did. We have well over 2000 Facebook followers. Get the word out about the Sketch Club. Please click the like button and share your comments and invite your friends to like our page.

Follow @PhilaSketchClub on Twitter, we have almost 400 followers. Please click the heart button and re-tweet our announcements.

Include links on your website, blogs and social media to The Philadelphia Sketch Club to increase traction across social media platforms.

Follow us on Facebook, Twitter and Instagram now!



Classifieds

I am interested in hiring an artist to do 4 or 5 small sketches. Do you have a directory of artists who would entertain this type of small commission? Please contact the PSC office for contact information:

info@sketchclub.org

Thank you,
Marla Neeson



Your Ad Here... Have something to sell? Looking for something?
Contact portfolio@sketchclub.org to arrange for posting.

The Portfolio: The newsletter of the Philadelphia Sketch Club is published monthly. Editor, technical support, and webmaster: Ken Weiner. Send your member news, announcements and corrections to portfolio@sketchclub.org. The due date for all materials is one week before the end of the month. Back issues of the Portfolio are available at: <http://sketchclub.org/portfolio-archive/>. Specifications for notice and banner submissions: <https://sketchclub.org/portfolio-submissions/>

Thanks to PSC member volunteers **Don Gauger** and **Ken Weiner**
for their ongoing support of Sketch Club
technology and communications functions.

The Philadelphia Sketch Club

235 S Camac Street
Philadelphia, PA 19107
(215) 545-9298
<http://sketchclub.org/>
gallerymanager@sketchclub.org
info@sketchclub.org

Administrative Director: Josie
Rowley

Officers:

- President: Tiger Jaser
- Vice President: Donald Gauger
- Secretary: Alex Torch Pinski
- Treasurer: Kenneth Weiner

Board of Directors:

- Clayton Bright
- Renard Edwards
- Chloë Epstein
- Viktor Evdokimov
- Andrew Goms
- Richard Harrington
- Suzanne O'Connor
- Sam Olshin
- Mark T Richter
- PJ Smalley